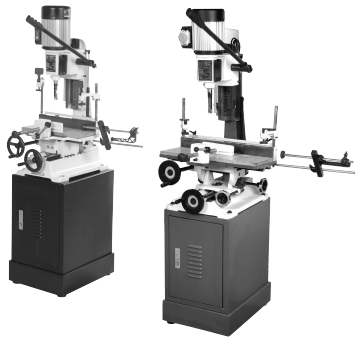




AW19FM & AW19FTH Morticers

100255 & 600779



Axminster Reference No's: **AW19FM & AW19FTH**



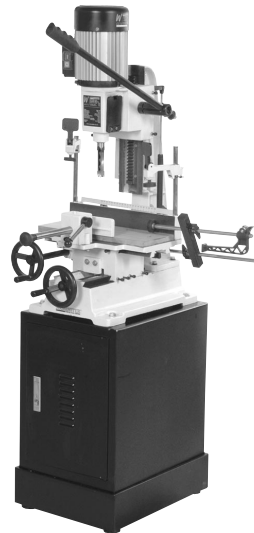
Axminster Devon EX13 5PH UK

**FREEPHONE 0800 371822**

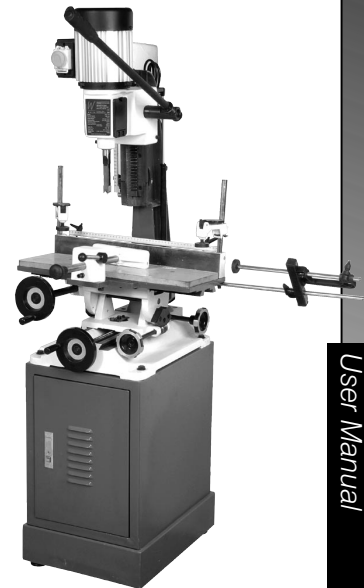
[www.axminster.co.uk](http://www.axminster.co.uk)



## **AW19FM & AW19FTH Morticers**



100255 (AW19FM)  
Floor Standing  
Morticer



600779 (AW19FTH)  
Floor Tilt Head  
Morticer



Axminster Reference No's: **AW19FM & AW19FTH**

[www.axminster.co.uk](http://www.axminster.co.uk)



100255, 600779

User Manual



## Index of Contents & Declaration of Conformity

### Page No.

Index of Contents.....	2
Declaration of Conformity.....	2
What's in the Box.....	3
General Instructions for 230v Machines.....	3,4
Specific Safety Instructions for Morticers.....	4
Unpacking and Assembly.....	5
Specifications.....	5
Illustration and Parts Description.....	6,7,8,9
Installing the Chisel and Bit.....	10
Operating Instructions.....	11,12
Maintenance.....	13
Illustrated Parts Breakdown for AW19FM.....	14
Illustrated Parts List for AW19FM.....	15
Illustrated Parts List for AW19FM.....	16
Illustrated Parts Breakdown for AW19FTH.....	17
Illustrated Parts List for AW19FTH.....	18
Illustrated Parts List for AW19FTH.....	19
Illustrated Parts Catalogue and Parts Breakdown:	
Cabinet Assembly.....	20
Clamping Bar Assembly.....	21
Work Stop Assembly.....	22
Notes.....	23

### Copied from CE Certificate

The undersigned, K. Bodenstein authorised  
by Laizhou Tongtai Machinery Co.,Ltd.  
Shilipu Chenggang Road, Laizhou,  
Shandong 261400  
P.R. China  
declares that this product:

**MS3840, MS3840T Morticer**  
manufactured by Laizhou Tongtai Machinery Co. in  
compliance with the following standards or standardisation  
documents in accordance with Council Directives

98/37/EC



### SAFETY!!

The symbols shown on the cover of this manual advise that you wear the correct safety protection when using this machine.

Read Manual



Two Man Assembly



Protective Gloves



Safety Footwear



Safety Visor



Eye Protection



Ear Defenders



Dust Mask



Safety Helmet



Respirator



Safety Protection Symbols



Notes...

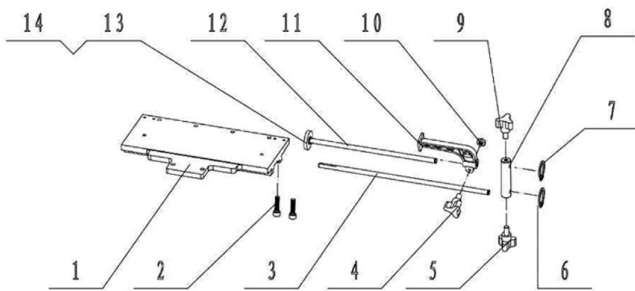


**FREEPHONE 0800 371822**

23

## Work Stop Assembly

NO.	Description	Quantity	NO.	Description	Quantity
D-1	Table	1	D-8	Length Setting Block	1
D-2	Cap Screw M6x25	2	D-9	Handle Screw (big)	1
D-3	Rear Length Setting Rod	1	D-10	Nut M6	1
D-4	Handle Screw	1	D-11	Stop Disc	1
D-5	Handle Screw (big)	1	D-12	Front Length Setting Rod	1
D-6	C-Clip	1	D-13	Washer	1
D-7	C-Clip	1	D-14	Stop Disc	1



Quantity	Item	Model
<b>Numbers</b>		
1 No.	Axminster AW19FM or AW19FTH Morticer	MS3840, MS3840T
1 No.	Cabinet Stand with Shelf and Lockable Drawer	
4 No.	M12 x 120 Hex Head Bolts and Washers	
1 No.	5/8" Chisel and Bit	
1 No.	3/4" Chisel Bushing	
1 No.	13/16" Chisel Bushing	
3 No.	Hexagon Keys	
1 No.	Chuck Key	
1 No.	Instruction Leaflet	
1 No.	Guarantee Card	

## General Instructions for 230v Machines...

### Good Working Practices/Safety



The following suggestions will enable you to observe good working practices, keep yourself and fellow workers safe and maintain your tools and equipment in good working order.



**WARNING!!** KEEP TOOLS AND EQUIPMENT OUT OF THE REACH OF YOUNG CHILDREN

### Electrical Safety

- Check that the mains power supply is earthed
- Regularly check the mains lead and plug for damage
- Ensure that a fuse of the correct amperage is fitted to the plug
- Ensure that any extension lead used is correctly rated to suit the machine or power tool
- Ensure that the power lead and any extension lead is kept clear of the blades or other sharp obstacles
- Do not use electrical machines or power tools in wet or damp areas or locations
- If a replacement mains plug is fitted at any time this must be of the appropriate size and fitted with the correct size of fuse.

### General Safety

- Mount the machine on a flat level bench or surface. Secure the machine to the surface where applicable.
- Always use machines or power tools in an uncluttered area. To reduce the risk of accidents, avoid leaving materials or other items within the working area and allow clear access to all machine parts and controls.

## General Instructions for 230v Machines...

- Clean machines by wiping with a damp soapy cloth. Do not use solvents or cleaners that may damage plastic parts or painted/coated surfaces. Keep water and solvents away from all electrical components, leads and plugs.
- When storing or leaving tools for any length of time, spray bare metal surfaces with Axminster XMP protective spray to minimise surface corrosion.
- Always isolate machines and power tools from the power supply when not in use or when changing parts, cutters and blades or when making any adjustments.
- Before using any machine or power tool, ensure that all locking-nuts, chucks etc, are tightened and secure. Check that all loose keys, spanners and other tools have been removed.
- Always ensure that long hair is tied back or retained by a band, hat or safety helmet. Remove all loose jewellery to prevent it from catching in rotating parts of the machine.
- Always check that the correct machining or cutting speed has been selected.
- Do not operate machinery or power tools when tired or under the influence of alcohol, drugs or certain medicines.
- **WHEN USING MACHINES ALWAYS WEAR SUITABLE EYE PROTECTION, EAR DEFENDERS AND DUST OR FUME INHALATION PROTECTION.**
- **WARNING!! KEEP TOOLS AND EQUIPMENT OUT OF THE REACH OF CHILDREN, UNLESS THEY ARE UNDER SUPERVISION.**

## Specific Safety Instruction for Morticers...

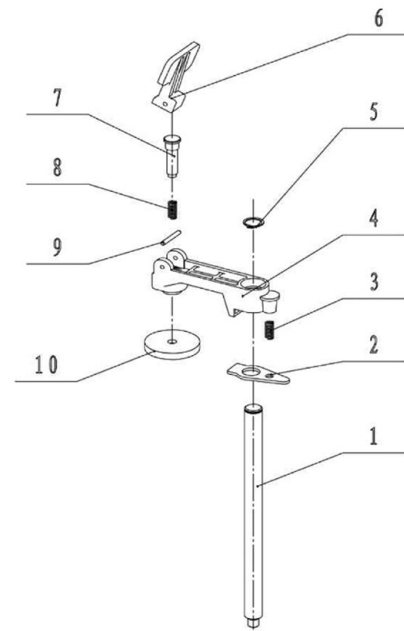
- Ensure that the morticer is firmly fixed to its base as the force exerted through the operating handle could be enough to over-balance the machine.
- Ensure that the operating handle is returned to the upright position after cutting a mortice.
- Mortice chisels have very sharp ends, handle them with great care.
- Make sure that the timber is held firmly down against the table, either with the vice or the hold down clamps. This prevents the possibility of the timber being pulled upwards as the mortice chisel is withdrawn from the hole.



## Illustrated Parts Catalogue & Parts Breakdown...

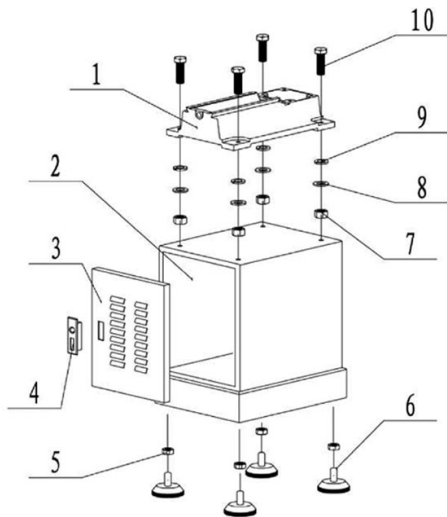
### Clamping Bar Assembly

Item No.	Description	Quantity
C-1	Shaft	2
C-2	Setting piece	2
C-3	Spring	2
C-4	Clamping body	2
C-5	C-Clip	2
C-6	Locking handle	2
C-7	Locking screw	2
C-8	Spring	2
C-9	Pin	2
C-10	Stop disc	2



**Cabinet Assembly**

Item No.	Description	Quantity
B-1	Base	1
B-2	Stand	1
B-3	Door	1
B-4	Door latch	1
B-5	Hex nut, M10	4
B-6	Stand base	4
B-7	Hex nut, M10	4
B-8	Washer, 10	4
B-9	Wave washer 10	4
B-10	Cap screw, M12x40	4



**Unpacking and Assembly...**

Remove the morticer and stand from the shipping cartons. Report any shortages or damage to Axminster Power Tools Customer Services Department. (0800 371822)

Read the manual thoroughly, familiarising yourself with the correct safety, operating and maintenance procedures before proceeding further.

The machine and stand are both supplied fully assembled so the initial assembly work is limited to positioning the morticer on the stand and securing with four M12 x 120mm long hexagon head bolts.

Fit the adjustable length stop if required using the two screws and washers supplied.



**To avoid the possibility of injury it is essential to use the appropriate lifting equipment when positioning the machine on the stand.**

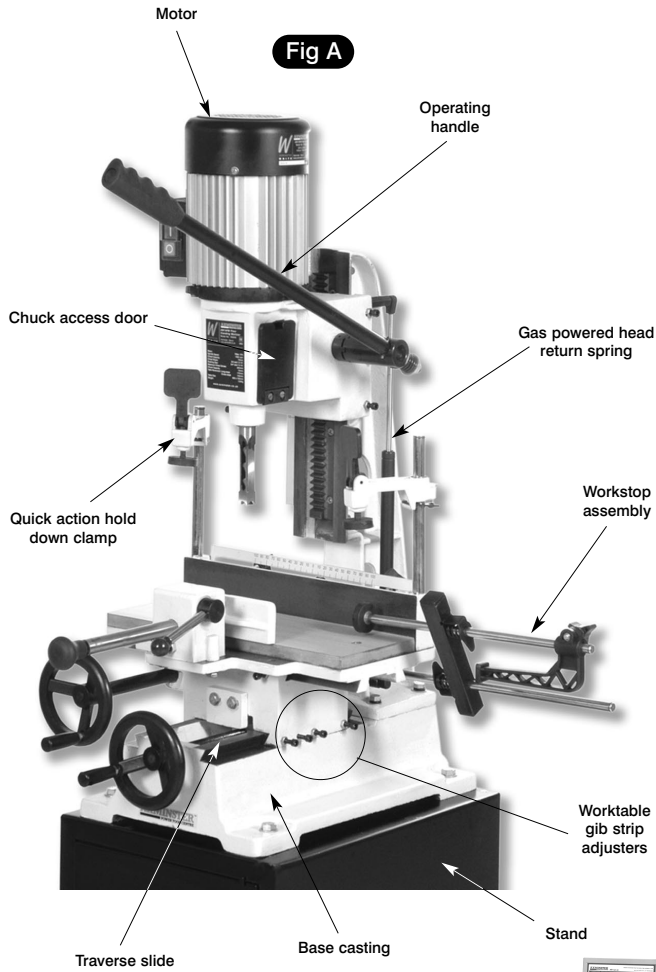
When positioning the machine in the workshop, ensure that there is adequate room on either side for the size of timber you plan to use.

**Specifications...**

Axminster No's.	100255	600779
Motor	750W, 1PH, 230V, 50Hz	
Rating	Trade	
Table Size	400 x 150mm	537 x 191mm
Table Movement		
Longways	170mm	280mm
Crossways	140mm	140mm
Max. Chisel Stroke	220mm	210mm
Chisel Capacity	19mm	19mm
Centre of Chisel to Back Face of Fence (Max)	140mm	140mm
Maximum Timber Height (With typical 1/2" chisel fitted)	230mm	230mm
Chisel Mounting Diameters (With supplied bushes)	3/4", 13/16"	3/4", 13/16"
Chuck Capacity	16mm	16mm
Table Tilt	N/A	+20° - 20°
Column Tilt	N/A	+20° - 20°
Overall Size without workstop assembly fitted		
(Length x Width x Height)	560x400x1540mm	560x610x1810mm
Weight with Stand	125kg	140kg



## Illustration and Parts Description...



## Illustrated Parts List for AW19FTH...

NO.	Description	Quantity	NO.	Description	Quantity
A-101	Screw, M6x10	3	A-127	Screw, M10x25	3
A-102	Gear	1	A-128	Gear	1
A-103	Drift	1	A-129	Plate-B	1
A-104	Nut, M6	4	A-130	shaft	1
A-105	Screw, M6x15	4	A-131	Screw, M6x15	4
A-106	Pin	1	A-132	Calibration	1
A-107	Gear shaft	1	A-133	Sharp	1
A-108	Collar	1	A-134	Washer	1
A-109	Handwheel	1	A-135	Screw, M5x10	1
A-110	Screw, M8x10	1	A-136	Screw, M8x25	1
A-111	Handwheel	1	A-137	Gear shaft	1
A-112	Gear	1	A-138	Calibration	1
A-113	Collar	1	A-139	Washer	2
A-114	Lead Screw	1	A-140	Cap screw, M8x25	2
A-115	Lead Nut	1	A-141	Handwheel	1
A-116	Sharp	2	A-142	Gear shaft	1
A-117	Screw, M5x10	2	A-143	Set screw	1
A-118	Screw, M8x25	1	A-144		
A-119	Washer	1	A-145		
A-120	Gear	1			
A-121	Gear shaft	1			
A-122	Handwheel	1			
A-123	Gear	1			
A-124	Screw, M10x25	3			
A-125	Plate-A	1			
A-126	Screw, M10x25	2			

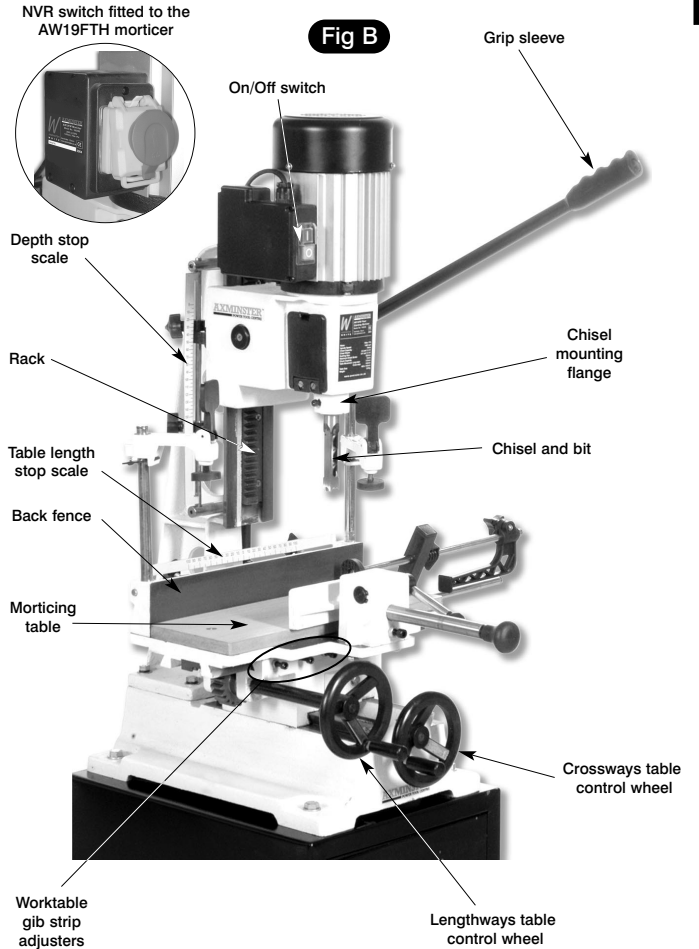


## Illustrated Parts List for AW19FTH...

NO.	Description	Quantity	NO.	Description	Quantity
A-1	Base	1	A-51	Handle	1
A-2	Middle base	1	A-52	Motor	1
A-3	Drift	1	A-53	Handle grip	1
A-4	Set screw, M6x35	4	A-54	Power cord	1
A-5	Hex nut, M6	4	A-55	Strain relief bushing	1
A-6	Washer, 10	4	A-56	Switch box	1
A-7	Wave washer, 10	4	A-57	Switch	1
A-8	Cap screw, M10x40	4	A-58	Washer	1
A-9	Column	1	A-59	Screw, M6x25	4
A-10	Screw	1	A-60	Chuck, 16mm	1
A-11	Gas spring	1	A-61	Screw, M6x10	1
A-12	Set screw, M6x35	3	A-62	Cover	1
A-13	Hex nut, M6	3	A-63	Gear	1
A-14	Drift	1	A-64	Shaft	1
A-15	Screw	1	A-65	Connecting bend	1
A-16	Rack	1	A-66	Spring	1
A-17	Screw, M6x10	4	A-67	Screw	1
A-18	Fence	1	A-68	Headstock	1
A-19	Washer, 10	4	A-69	Screw	1
A-20	Wave washer, 10	4	A-70	Ruler mark	1
A-21	Cap screw, M10x25	4	A-71	Screw	1
A-22	Localizer	1	A-72	Setting collar	1
A-23	Washer, 6	2	A-73	Screw, M4x12	2
A-24	Screw, M6x15	2	A-74	Setting rod	1
A-25	Screw, M6x10	2	A-75	Setting collar	1
A-26	Pin	1	A-76	Screw, M6x25	1
A-27	Hex nut, M10	1	A-77	Bushing	1
A-28	Washer, 10	1	A-78	Mortising chisel and bit	1
A-29	Screw	1	A-79	Pin	1
A-30	Screw	1	A-80	Clamp plate	1
A-31	Setting collar	1	A-81	Spring	1
A-32	Setting rod	1	A-82	Spring cover	1
A-33	Setting collar	1	A-83	Handle	1
A-34	Hex nut, M10	1	A-84	Cover	1
A-35	Washer, 10	1	A-85	Screw, M5x10	4
A-36	Screw	1	A-86	Cover base	2
A-37	Screw, M6x15	1	A-87	"C" ring, 20	2
A-38	Screw	1	A-88	Handle	1
A-39	Screw, M4x12	1	A-89	Shaft	1
A-40	Depth ruler	1	A-90	Clamping block	1
A-41	Screw, M4x12	1	A-91	Nut, M10	1
A-42	Screw, M6x15	1	A-92	Screw, M8x25	1
A-43	Screw, M6x15	2	A-93	Locking shaft	1
A-44	Washer, 6	2	A-94	Handle	1
A-45	Localizer	1	A-95	Wood table	1
A-46	Hex nut, M12	1	A-96	Screw, M8x25	2
A-47	Washer, 12	1	A-97	Table	1
A-48	Spring	1	A-98	Washer, 10	2
A-49	Washer, 14	1	A-99	Screw, M10x25	2
A-50	Connecting bend	1	A-100	Rack	1

To be continued

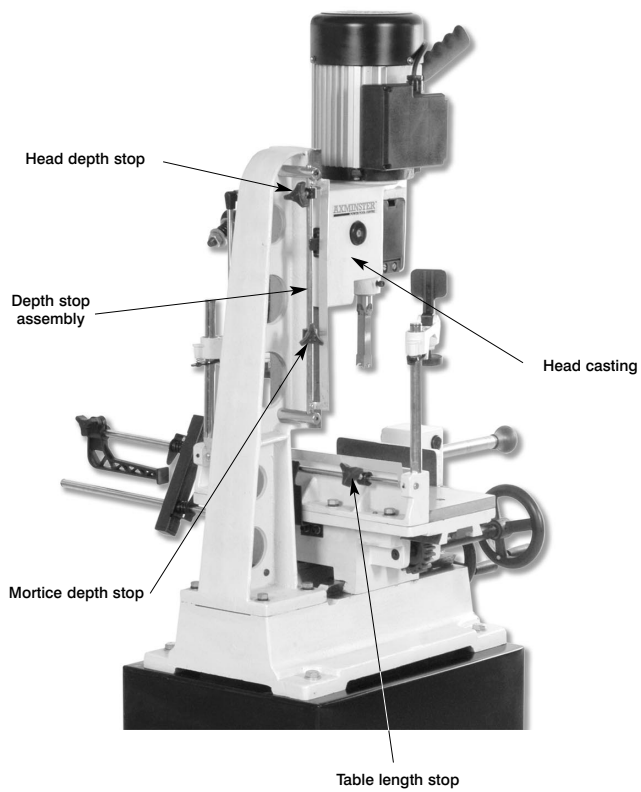
## Illustration and Parts Description...



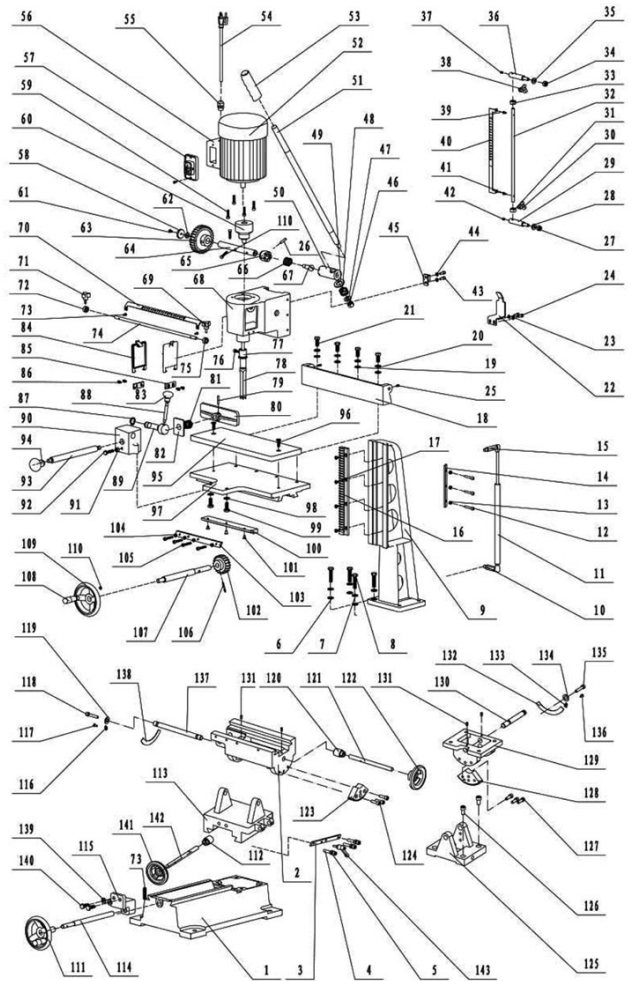
**FREEPHONE 0800 371822**

**Illustration and Parts Description...**

**Fig C**



**Illustrated Parts Breakdown for AW19FTH...**



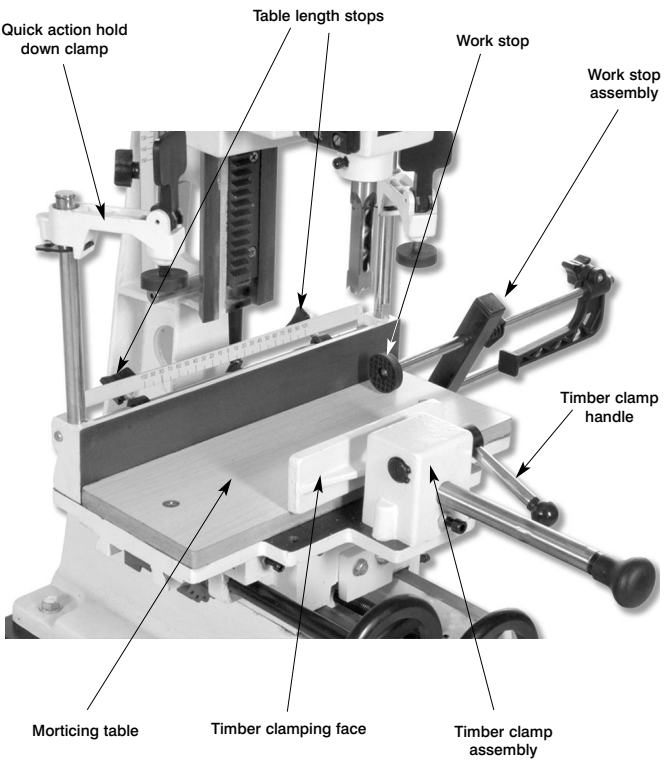


**Illustrated Parts List for AW19FM...**

NO.	Description	Quantity	NO.	Description	Quantity
101	Screw, M6x10	3	112	Screw, M8x10	1
102	Gear	1	113	Collar	1
103	Drift	1	114	Lead Screw	1
104	Nut, M6	4	115	Lead Nut	1
105	Screw, M6x15	4	116	Washer 10	2
106	Pin	1	117	Screw, M10x25	2
107	Gear Shaft	1	118		
108	Collar	1	119		
109	Handwheel	1	120		
110	Screw, M8x10	1	121		
111	Handwheel	1	122		

**Illustration and Parts Description...**

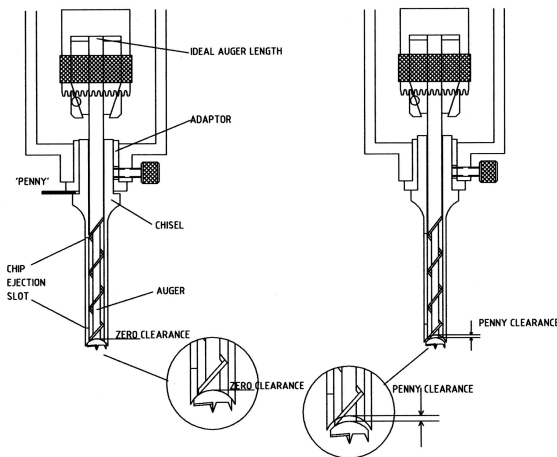
**Fig D**



## Installing the Chisel and Bit...

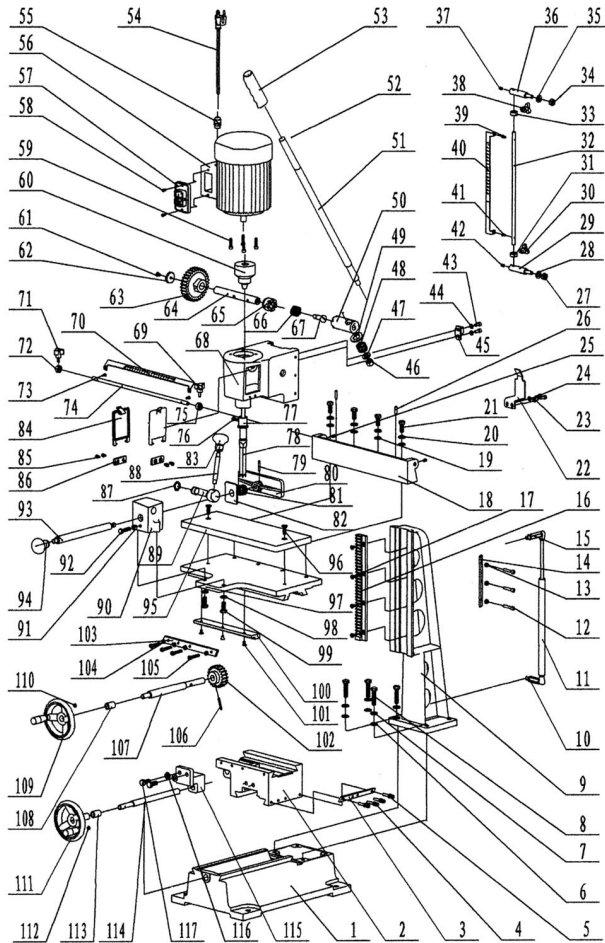
1. Select the size of mounting bush to suit the chisel being used and fit into the mortising head.
  2. Insert the chisel into the bush and tighten the screw just enough to hold the chisel in place. Rotate the chisel so that the slot in the side of the chisel is positioned either to the left or right, not the front or back; this will allow the chips to escape freely when cutting.
  3. Push the chisel fully into the bush and then retract it by about 1.5 mm, using a spacer such as a coin as shown in Fig E to establish the correct position. Tighten up the locking screw.
  4. Insert the auger into the chisel and push it fully up so that it contacts the recess in the end of the chisel and then fully secure the shank of the auger in the chuck.
- ⚠ Be careful when handling mortising chisels as the ends are very sharp.**
5. Now slacken off the chisel clamping screw, remove the spacer, push the chisel fully home and re-tighten the screw. This procedure will ensure that there is a small clearance between the end of the auger and the chisel, essential in order to avoid waste jamming and overheating the chisel.
  6. The final operation is to check that the chisel is perfectly square to the table; this is best done by bringing the table forward until the vertical face just touches the back face of the chisel and using this as a datum for aligning the chisel. Ensure that the chisel is securely clamped in position before starting work.

Fig E



## Illustrated Parts List for AW19FM...

NO.	Description	Quantity	NO.	Description	Quantity
1	Base	1	51	Handle	1
2	Middle Base	1	52	Motor	1
3	Drift	1	53	Handle Grip	1
4	Set Screw, M6x35	4	54	Power Cord	1
5	Hex Nut, M6	4	55	Strain Relief Bushing	1
6	Washer, 10	4	56	Switch Box	1
7	Wave Washer, 10	4	57	Switch	1
8	Cap Screw, M10x40	4	58	Screw, M4x15	2
9	Column	1	59	Screw, M6x25	4
10	Screw	1	60	Chuck, 16mm	1
11	Gas Spring	1	61	Screw, M6x10	1
12	Set Screw, M6x35	3	62	Cover	1
13	Hex Nut, M6	3	63	Gear	1
14	Drift	1	64	Shaft	1
15	Screw	1	65	Connecting Bend	1
16	Rack	1	66	Spring	1
17	Screw, M6x10	4	67	Screw	1
18	Fence	1	68	Headstock	1
19	Washer, 10	4	69	Screw	1
20	Wave Washer, 10	4	70	Ruler mark	1
21	Cap Screw, M10x25	4	71	Screw	1
22	Localizer	1	72	Setting Collar	1
23	Washer, 6	2	73	Screw, M4x12...	2
24	Screw, M6x15	2	74	Setting Rod	1
25	Screw, M6x10	2	75	Setting Collar	1
26	Pin	2	76	Screw, M6x25	1
27	Hex Nut, M10	1	77	Bushing	1
28	Washer, 10	1	78	Mortising Chisel And Bit	1
29	Screw	1	79	Pin	1
30	Screw	1	80	Clamp Plate	1
31	Setting Collar	1	81	Spring	1
32	Setting Rod	1	82	Spring Cover	1
33	Setting Collar	1	83	Handle	1
34	Hex Nut, M10	1	84	Cover	1
35	Washer, 10	1	85	Screw, M5x10	4
36	Screw	1	86	Cover Base	2
37	Screw, M6x15	1	87	C-Spring C-20	2
38	Screw	1	88	Handle	1
39	Screw, M4x12	1	89	Shaft	1
40	Depth Ruler	1	90	Clamping Block	1
41	Screw, M4x12	1	91	Nut, M10	1
42	Screw, M6x15	1	92	Screw, M8x25	2
43	Screw, M6x15	2	93	Locking Shaft	1
44	Washer, 6	2	94	Handle	1
45	Localizer	1	95	Wood Table	1
46	Hex Nut, M12	1	96	Screw, M8x25	2
47	Washer, 12	1	97	Table	1
48	Spring	1	98	Washer, 10	2
49	Washer, 14	1	99	Screw, M10x25	2
50	Connecting Bend	1	100	Rack	1



1. Set the depth of the mortice with the lower of the two depth stops (Fig C) on page 8. The upward travel of the head can be limited by adjusting the upper stop; this prevents unnecessary movement of the operating handle when cutting shallow mortices.
2. Place the workpiece on the table and clamp in position with the vice or the hold down clamps. Use the left handwheel to move the table forwards and backwards in order to position the mortice in the required position across the timber.
3. Adjust the two table stops shown in Fig D on page 9 to give the required length of mortice and tighten up the two thumbscrews.
4. Turn the machine on and feed the chisel and bit steadily into the work by pulling down on the operating handle. The handle can be re-positioned on its spindle so that it is in the most convenient position.
5. After making the first cut, the table is moved along with the left hand wheel for successive cuts until the mortice is complete. The direction of movement of the table will depend on which side of the chisel the clearance slot is located - movement should be away from the slot so that the chippings can clear freely.
6. The rate of feed of the chisel should be fast enough to prevent burning of the tip of the chisel but not so fast as to risk breaking the auger. The ideal speed for any combination of chisel size and timber type will be learned through experience.
7. Deep mortices are best cut in a series of shallower cuts to allow the chippings to clear and prevent blocking of the chisel.

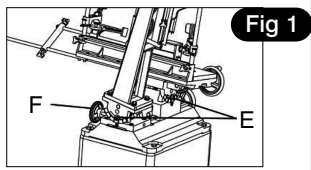
**⚠ This section refers only to the AW19FTH Morticer**

**Table & Column Tilt Control**

**⚠ WARNING!!** To avoid the morticer from becoming top heavy and tipping over we advise you **DO NOT** angle the Column and Table beyond 21° degrees.

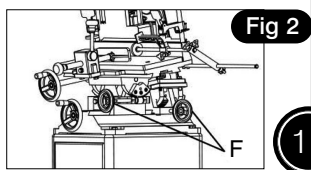
**Setting the Table Angle**

Loosen the caphead bolt (E) below the left sized of the table using a 8mm allen key (See figs 1,4,4a). Turn the handwheel (F) clockwise or anti-clockwise to set the angle on the scale. (See fig 3) When the required angle is reached, re-tighten the caphead bolt (E). (See fig 4a)



**Setting the Column Angle**

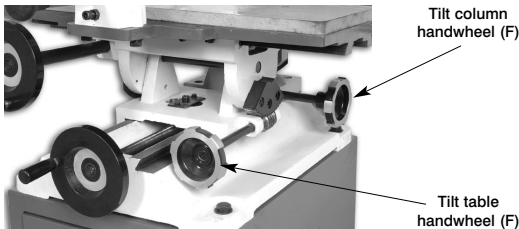
On the tilt column assembly loosen the caphead bolt with a 8mm allen key (E) (See figs 1, 5a), pull and turn the column lock pin (G) towards you to un-lock the column & to prevent the pin from spring back into the recess. (See fig 5a) Turn the column handwheel (F) (clockwise or anti-clockwise), to set the angle on the scale. (See figs 2,3) Once the required angle is reached, turn and push the column lock pin (G) back into the recess then re-tighten the caphead bolt (E) on the column.



## Operating Instructions...

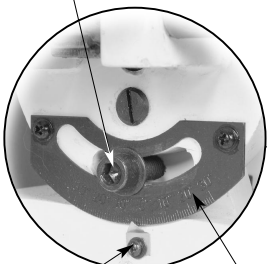


**This section refers only to the AW19FTH Morticer**



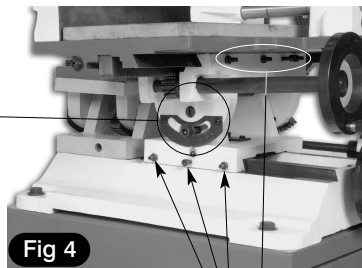
**Fig 3**

Caphead bolt (E)



**Fig 4a**

Pointer Table Scale



**Fig 4**

Worktable gib strip adjusters



**Fig 5**

Column tilt assembly

**Fig 5a**

Column Scale

Pointer

## Maintenance...

The morticer requires only minor maintenance such as routine cleaning and lubrication. Keep the machine clean and use a light application of thin oil to the moving parts.

Chisels and bits should be kept sharp for best performance, a discoloured tip is usually a sign of excessive heat caused by a blunt auger and/or chisel. Bits are best sharpened with a small file and chisels with the special mortice chisel sharpeners available through Axminster Power Tool Centre (Tel 0800 371822).

Burrs can be removed from the sides of the chisel on a fine oilstone or waterstone but great care must be taken not to taper the chisel as this will cause the chisel to jam in the timber.

