

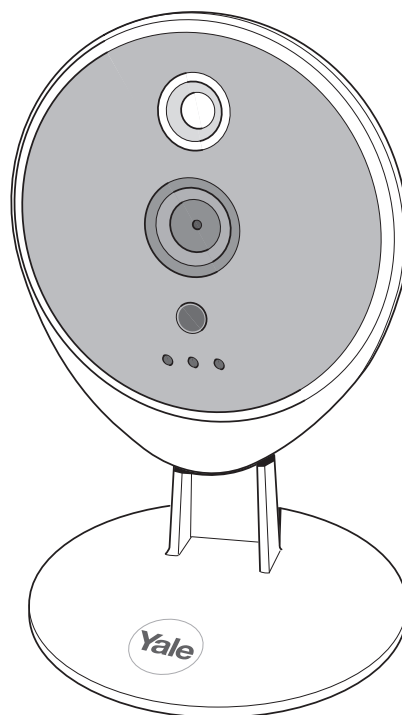


WIPC-301W

Manual

Home View Camera

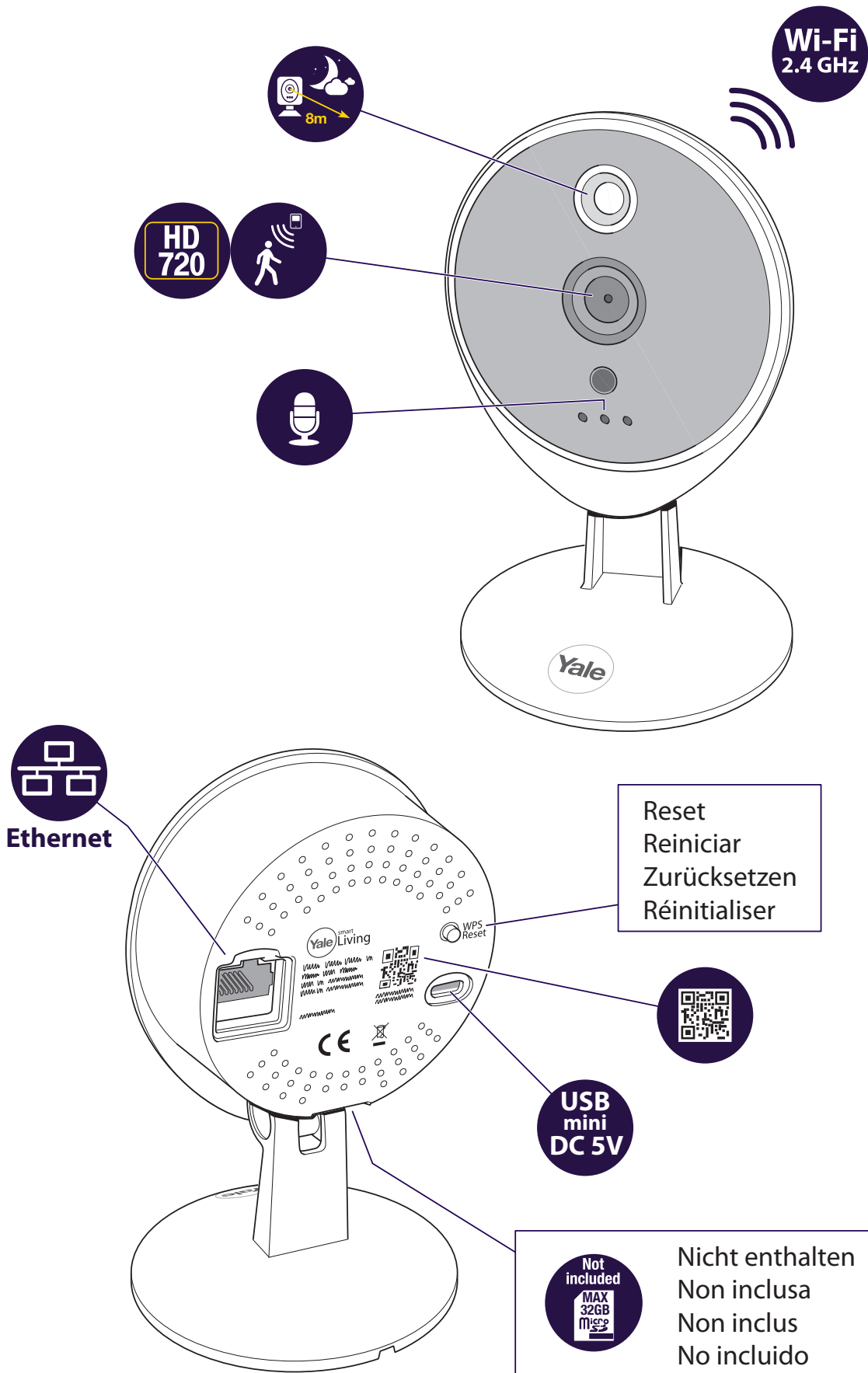
Indoor IP Kamera
Video Cámara PTZ
Camera IP
Caméra IP

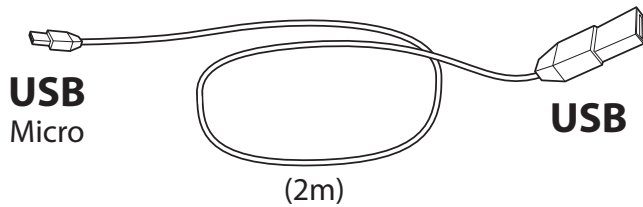
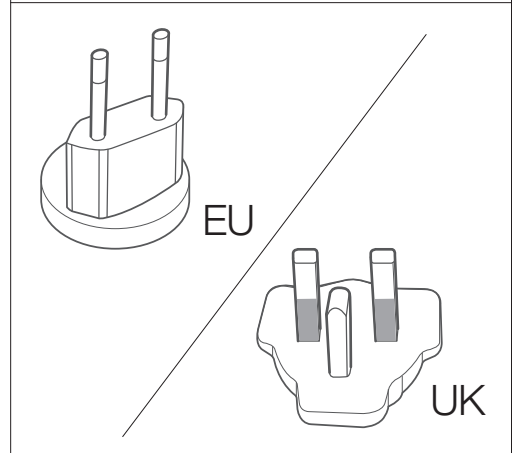
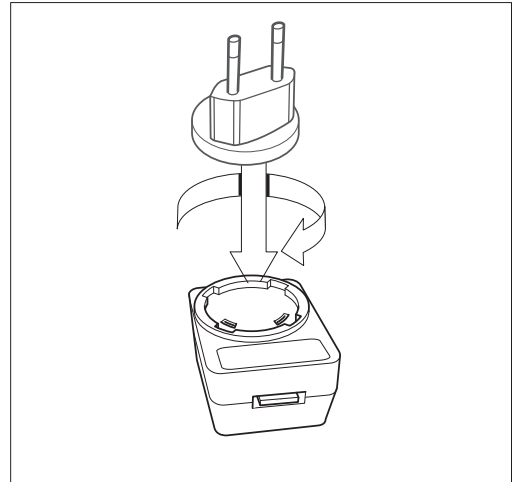
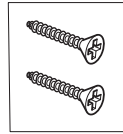
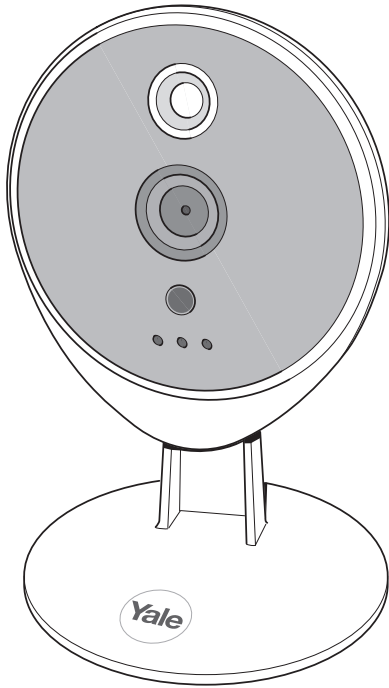


An ASSA ABLOY Group brand

ASSA ABLOY

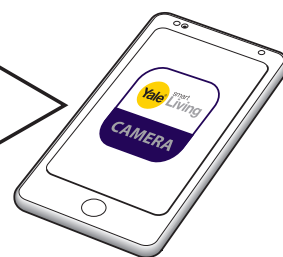
The smarter way to protect your home.



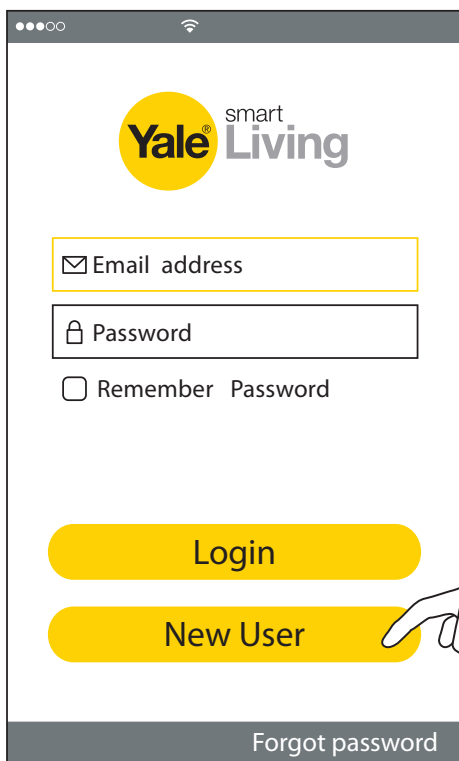
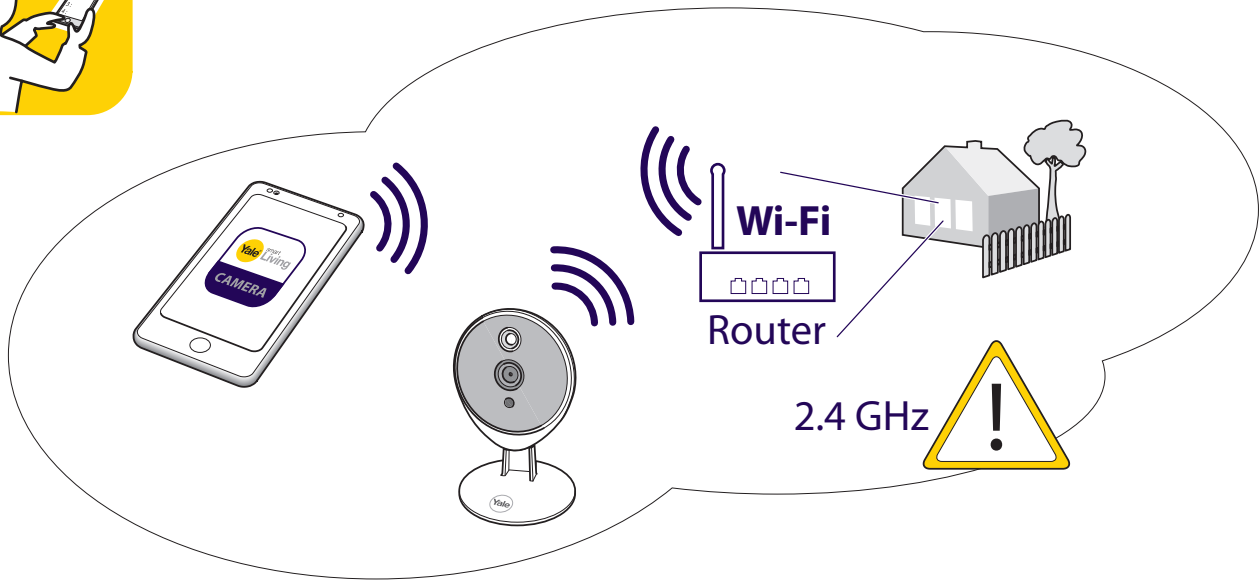


1

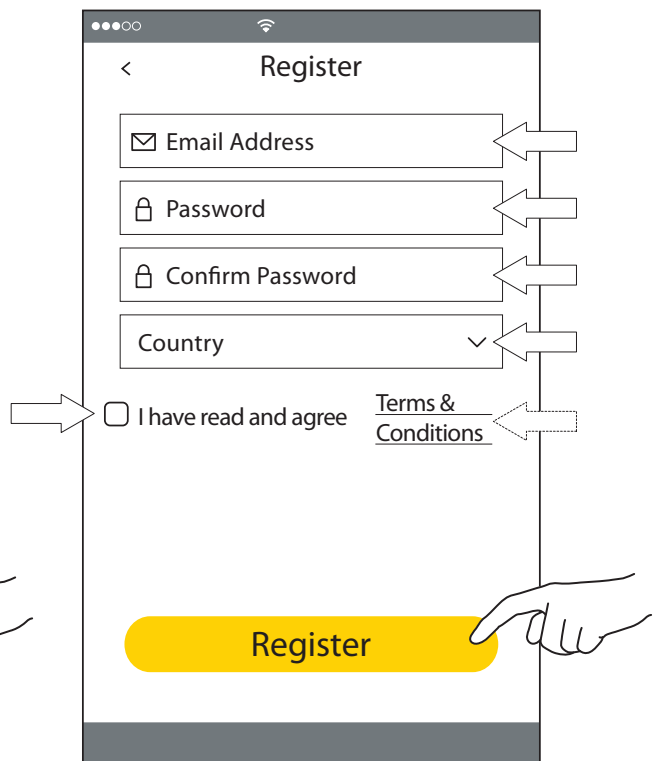
Yale Home View 



2 Create Account

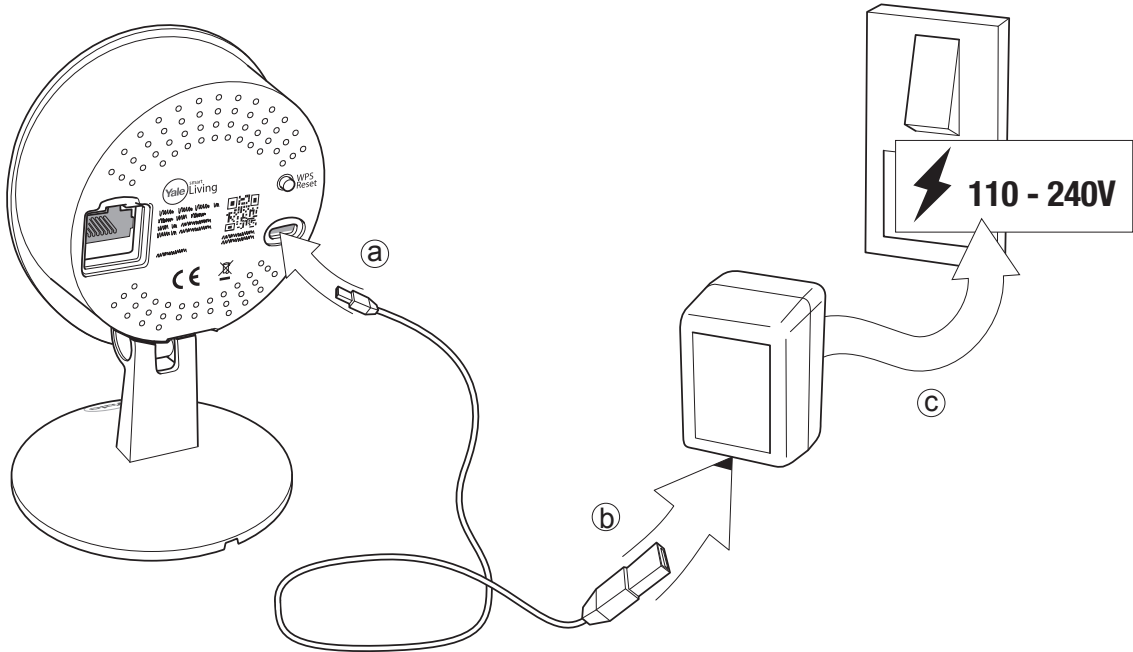


The login page features the Yale smart Living logo at the top. Below it are two input fields: 'Email address' and 'Password'. There is a checkbox for 'Remember Password'. At the bottom, there are two yellow buttons: 'Login' and 'New User'. A hand is shown tapping the 'New User' button. A 'Forgot password' link is located at the very bottom of the screen.



The register page is titled 'Register' and includes a back arrow. It contains four input fields: 'Email Address', 'Password', 'Confirm Password', and 'Country'. Below these is a checkbox for 'I have read and agree' followed by a link to 'Terms & Conditions'. A yellow 'Register' button is at the bottom, with a hand tapping it. Arrows on the right side of the form indicate the flow of information or validation.

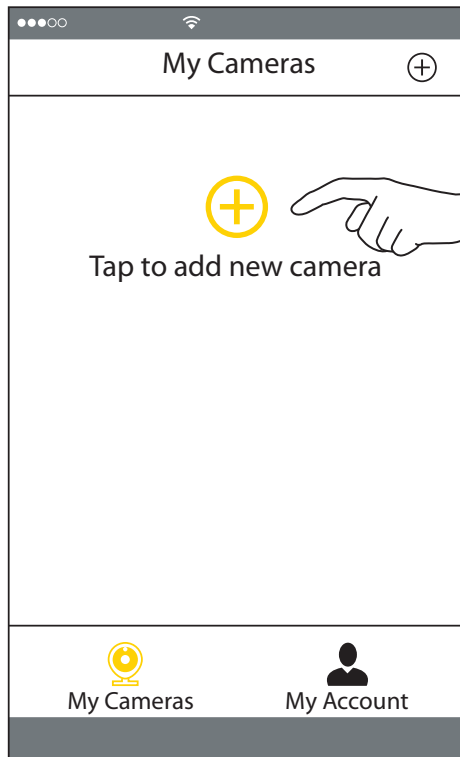
3



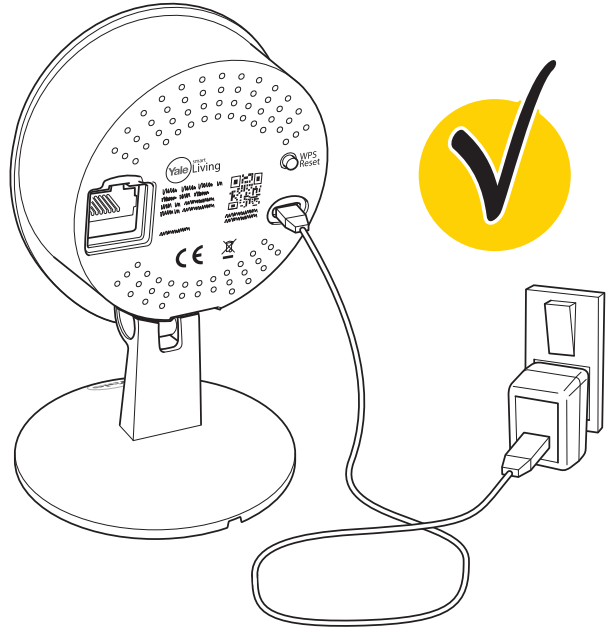
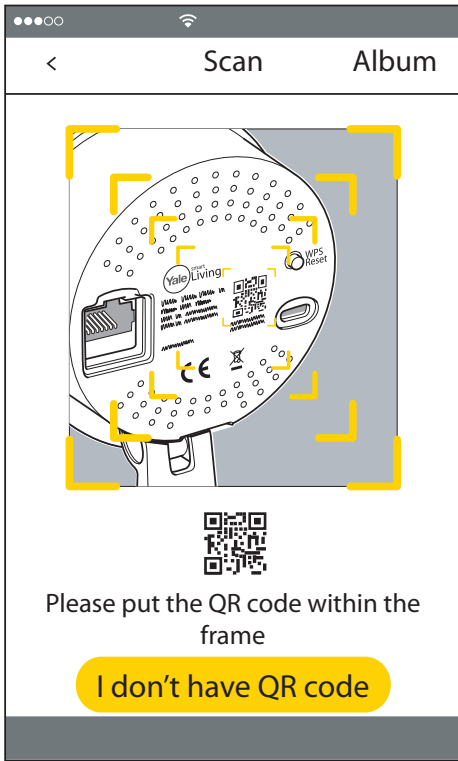
4 App - Setup camera



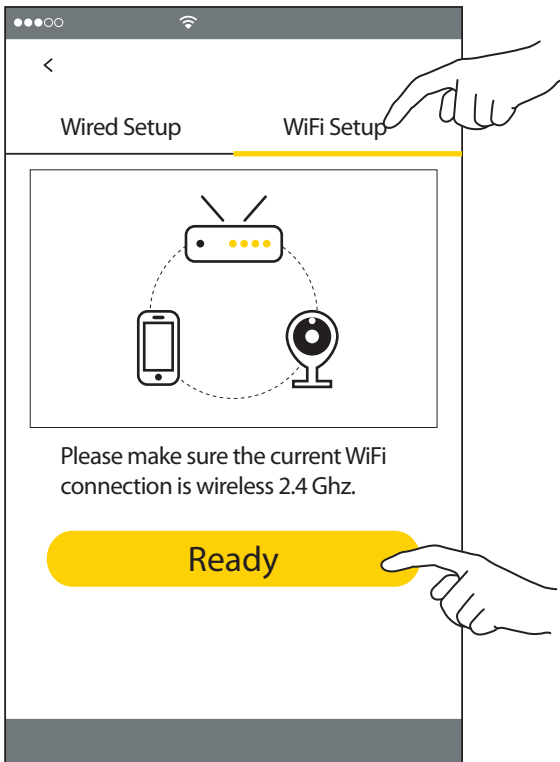
1



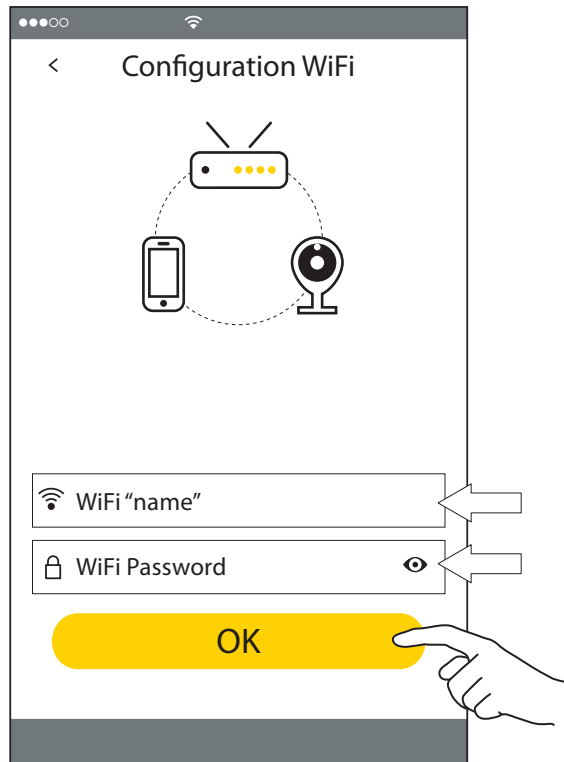
2



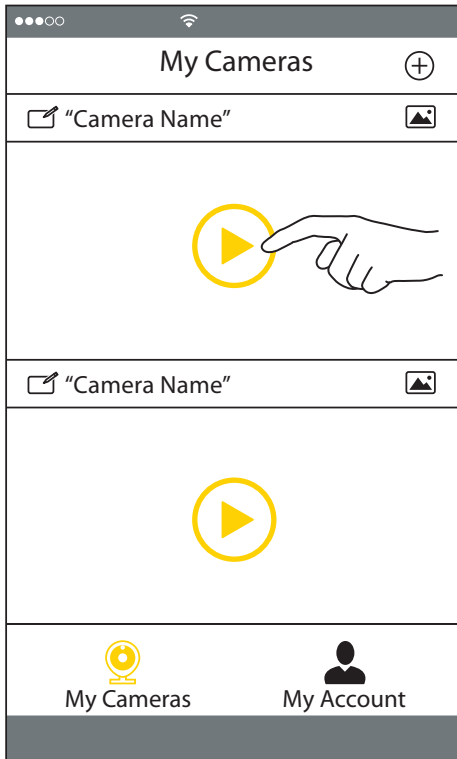
3



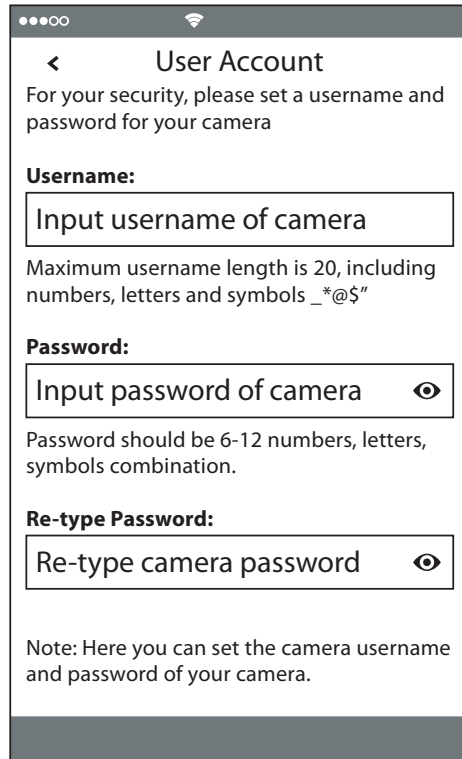
4



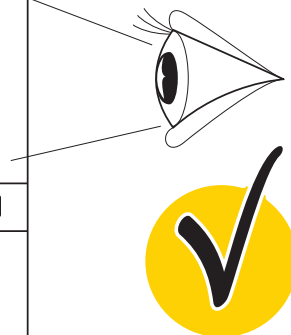
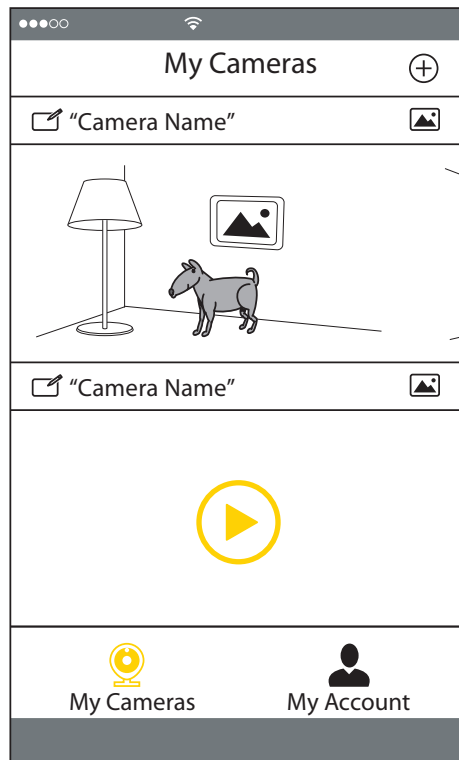
5



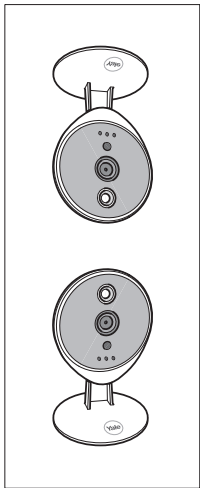
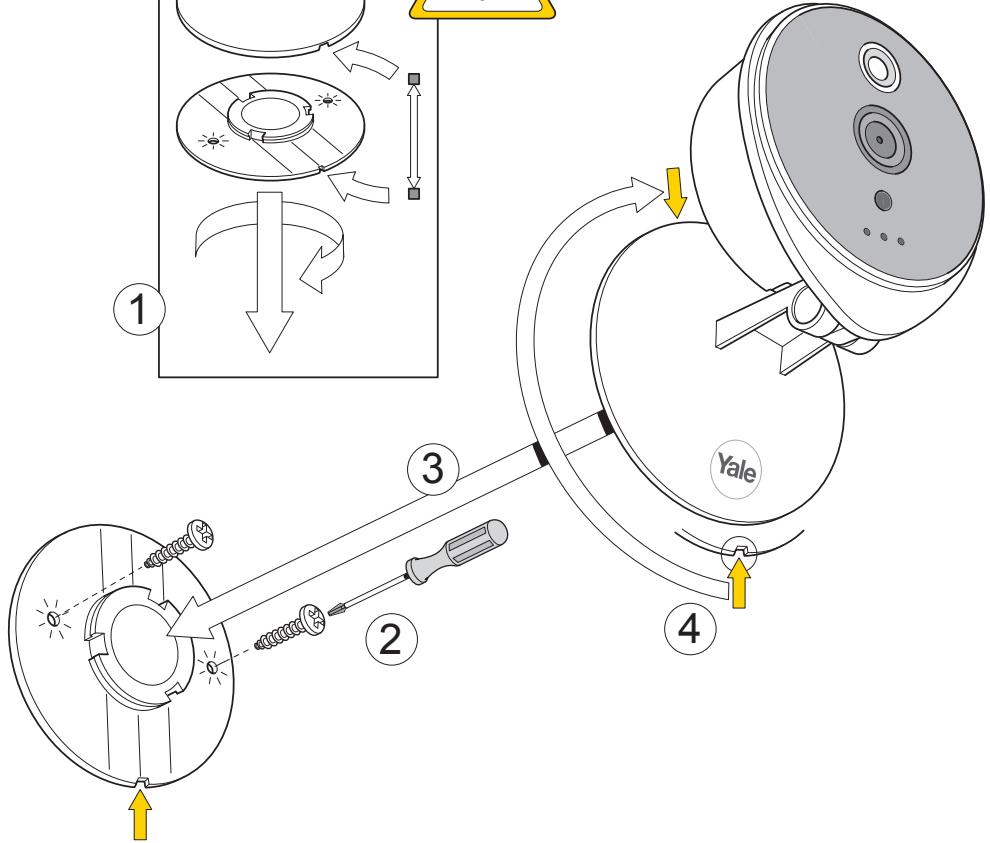
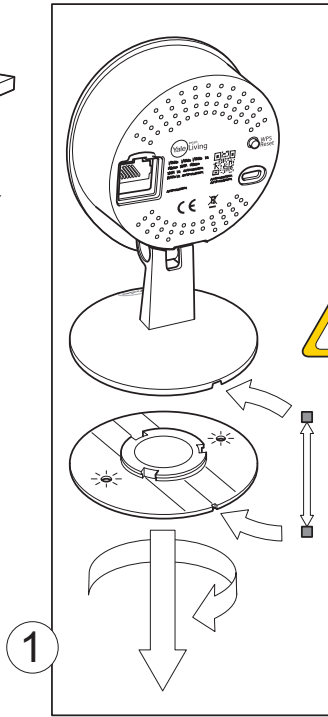
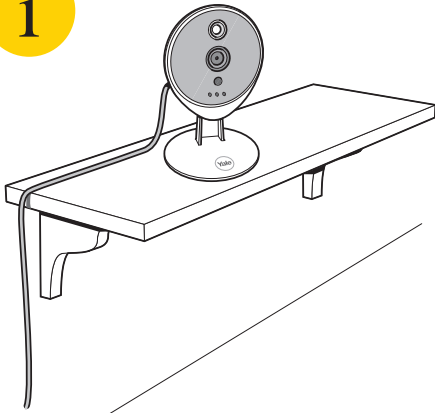
6



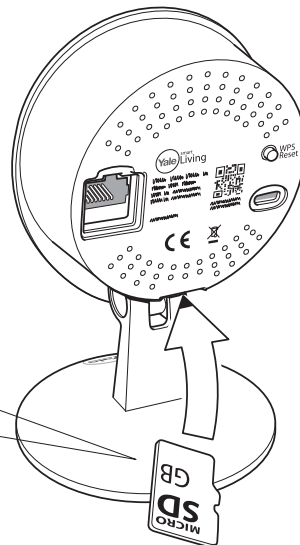
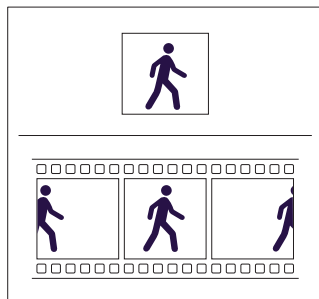
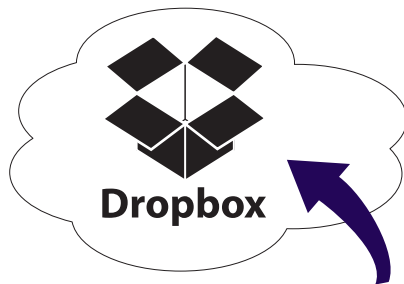
7



i



i

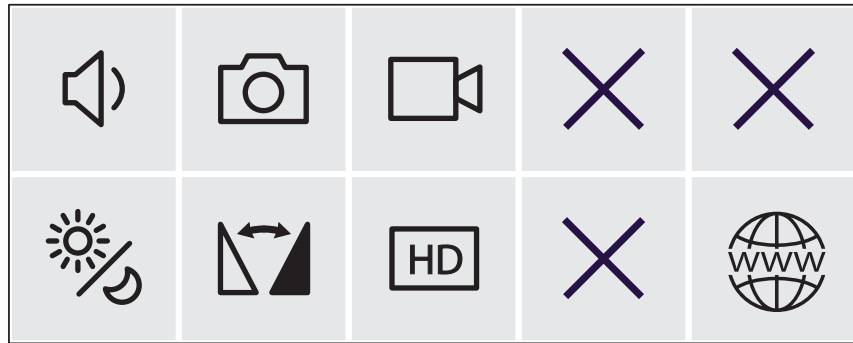
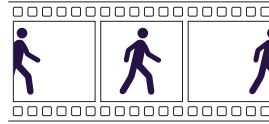




Photo



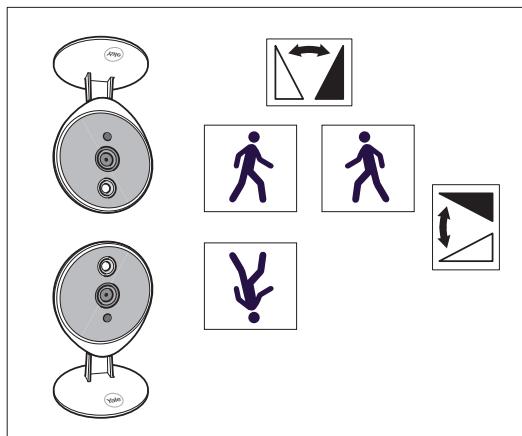
Video



www.yalelock.com/smart-living



On / Off / Auto



**GB:**

Hereby, ASSA ABLOY Ltd., School Street, Willenhall, West Midlands, England Wv13 3PW declares that the radio equipment type WIPC-301W is in compliance with Directive 2014/53/EU. The full text of the EU declaration of conformity is available at the following internet address: www.yalelock.com/smart-living/doc

FR:

Le soussigné, ASSA ABLOY Ltd., School Street, Willenhall, West Midlands, England Wv13 3PW, déclare que l'équipement radioélectrique du type WIPC-301W est conforme à la directive 2014/53/UE. Le texte complet de la déclaration UE de conformité est disponible à l'adresse internet suivante: www.yalelock.com/smart-living/doc

••• Message à destination des professionnels •••

Si vous souhaitez installer WIPC-301W dans votre société, vous devez obligatoirement demander une autorisation à la Commission Nationale de l'Informatique et des Libertés.

ES:

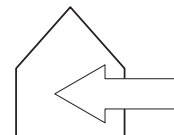
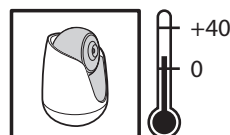
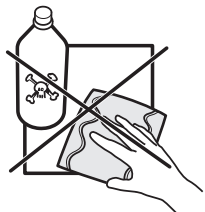
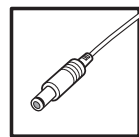
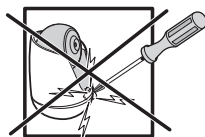
Por la presente, ASSA ABLOY Ltd., School Street, Willenhall, West Midlands, England Wv13 3PW declara que el tipo de equipo radioeléctrico WIPC-301W es conforme con la Directiva 2014/53/UE. El texto completo de la declaración UE de conformidad está disponible en la dirección Internet siguiente: www.yalelock.com/smart-living/doc

DE:

Hiermit erklärt ASSA ABLOY Ltd., School Street, Willenhall, West Midlands, England Wv13 3PW, dass der Funkanlagentyp WIPC-301W der Richtlinie 2014/53/EU entspricht. Der vollständige Text der EU-Konformitätserklärung ist unter der folgenden Internetadresse verfügbar: www.yalelock.com/smart-living/doc

IT:

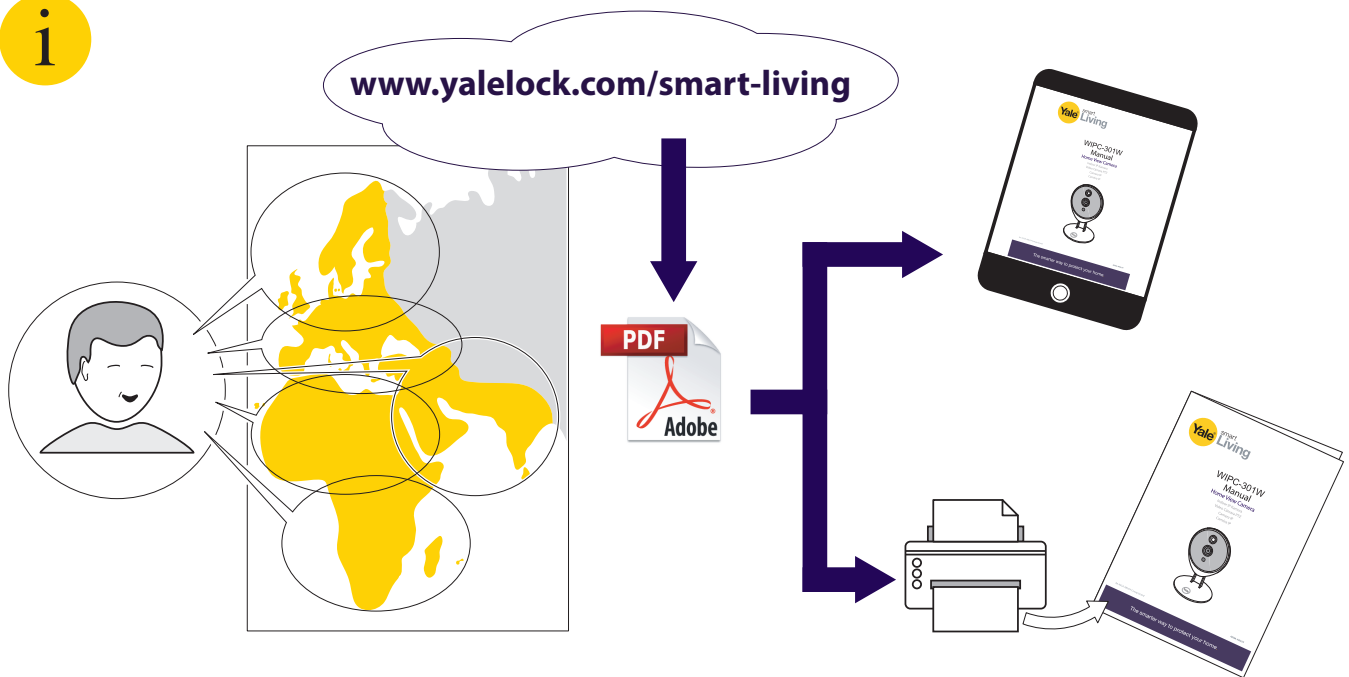
Il fabbricante, ASSA ABLOY Ltd., School Street, Willenhall, West Midlands, England Wv13 3PW, dichiara che il tipo di apparecchiatura radio WIPC-301W è conforme alla direttiva 2014/53/UE. Il testo completo della dichiarazione di conformità UE è disponibile al seguente indirizzo Internet: 22.5.2014 L 153/104 Gazzetta ufficiale dell'Unione europea IT: www.yalelock.com/smart-living/doc



i Support



i



THE YALE BRAND, with its unparalleled global reach and range of products, reassures more people in more countries than any other consumer locking solution.

THE ASSA ABLOY GROUP is the world's leading manufacturer and supplier of locking solutions, dedicated to satisfying end-user needs for security, safety and convenience.

An ASSAABLOY Group brand

ASSA ABLOY