

WARRANTY

Product Name	Bidet Spa		Model Name	PB-X800 PB-X1000 PB-X1200 PB-X1500 PB-X2000 PB-X2500
Date of Purchase				
Warranty Period				
User	Name		Telephone	
	Address			

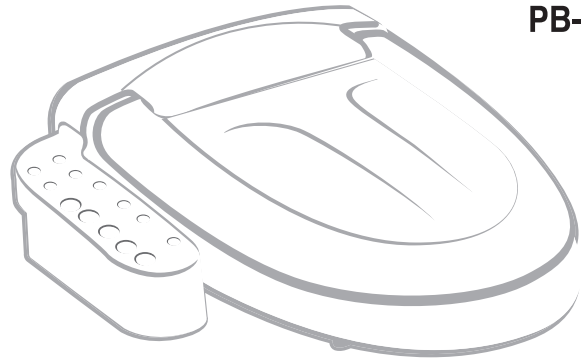
Xime

Xime

Bidet Spa

User Manual

PB-X800
PB-X1000
PB-X1200
PB-X1500
PB-X2000
PB-X2500



Xime | <http://www.paseco.com>

- * Please read "Notes on Safety" before you start to use this Bidet and use it appropriately.
- * After reading this manual, please keep it where it can be reached easily by everyone.
- * This manual is for 6 models. The function for specific model is mentioned as parenthesis ().
- * The design and the dimension of this Bidet may change without notice in order to improve its quality.



CONTENTS

Before Use	● NOTES ON SAFETY	3-6
	● FEATURES	7-8
	● CONTROL PANEL AND ADJUSTMENTS	9-11
	● NAME OF PARTS	12-13
Use	● INSTALLATION	14-15
	● HOW TO USE	16-18
	● CLEANING	19
	● STORING	19
Others	● ITEMS TO CHECK BEFORE REQUESTING A SERVICE	20
	● SPECIFICATIONS	21



NOTES ON SAFETY

* The following instructions are intended to help you use this Bidet safely and correctly in order to prevent unexpected danger or damage. So, please observe them.
 * The safety-related instructions are indicated as shown below depending on the degree of danger or damage and its urgency that may arise from inappropriate use.

Mark	Meaning
	WARNING Serious injury or death may occur if used inappropriately
	CAUTION Light injury or product damage may occur if used inappropriately.
	This mark requests your attention to certain circumstances or operation that may lead to a danger. Whenever this mark appears, read carefully and follow the instructions to prevent danger

● The types of instructions that must be observed are indicated by signs as follows

					These marks indicate actions that you must not do
					These marks indicate actions that you must do

WARNING

This Bidet must be grounded to prevent short circuit or electric shock.

* Non-grounding may cause breakdown or electric shock.

* The plug of this Bidet has built-in ground. Always use matching outlet.

<p>● Do not use the same consent with other electric heating appliances exceeding the allowed voltage rating.</p> <ul style="list-style-type: none"> It may be overheated and cause fire. <p></p> <p>NO</p>	<p>● Do not pull out the plug by pulling the power cord.</p> <ul style="list-style-type: none"> It may damage cause short circuit of electric shock due to damage. <p></p> <p>NO</p>
<p>● Do not touch the power cord with wet hand.</p> <ul style="list-style-type: none"> It may cause electric shock. <p></p> <p>NO</p>	<p>● Do not use the damaged power cord or plug.</p> <ul style="list-style-type: none"> It may cause short circuit or electric shock. <p></p> <p>NO</p>

⚠ WARNING

● Prevent the Control Panel from contact with water.

- It may cause fire or electric shock.
- If seeped into the control panel, pull out the plug and contact the place of purchase or the Service Center and follow the instruction.



No contact with water



● Do not spray water on the product or use in excessively damp place.

- It may cause fire or electric shock.



No contact with water



● Do not block the warm air outlet with hand.

- Blocking the air flow may cause fire due to internal overheating.



● Do not throw live cigarette or other burning object in the toilet.

- It may cause fire.



● When the product is removed, unplug the power first.

- Otherwise, it may cause electric shock.



● Always unplug the power cord first before cleaning.

- Otherwise, it may cause electric shock.



● If unusual smell comes out of the product, unplug the power cord and contact the place of purchase or the Service Center.

- There may be danger of electric shock.



NO



● Do not pull the connection pipe or water supply hose by force.

- If water is flowing into the product, it may cause fire or electric shock.



NO



⚠ WARNING

● Do not attempt to disassemble, repair or modify the product.

- It may cause electric shock or fire or damage the product.
- Call the Service Center for any repair works.



No disassembling



● If the product has not been used for a prolonged period, operate the cleansing or bidet process 2 to 3 times before use.

- Degenerated water may cause physical damage.
- Call the Service Center if repair work is necessary.



2-3 times



● Use neutral cleaner for cleaning and do not use acid or alkaline cleaner.

- It may cause decolorization, discoloration or deformation.



NO

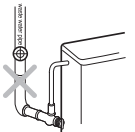


● Always use water from water service for installation.

- Using industrial water or waste water may cause skin damage or diseases.



NO



● Do not step on the toilet cover or place heavy objects on it.

- The cover may break down causing injury.



NO



● Children, old or feeble person, or heavily drunk person must be accompanied by an adult for use.

- To avoid 'low temperature burn', set the temperature to "Low" and do not let the person use for a prolonged time.



- Take care of using Bidet in case of patient with disease related to anus / female and use Bidet after consulting a doctor.

※ Beware of low temperature burn from toilet seat or warm drying air



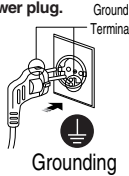
If any of the following persons uses the product, someone close by must take care by setting the temperature to "Low", etc. A child or a person, who is old, has delicate skin, can not adjust temperature on his/her own, is under influence of sleeping pills or cold medicine, etc. or is heavily drunk or extremely tired.

- Contact of skin with the toilet seat for a prolonged time may cause low temperature burn.
- Using warm air drying on the same spot of skin for a prolonged time may cause low temperature burn.

⚠ CAUTION

● **Use the grounded AC 230V/50Hz outlet matching with the power plug.**

- Otherwise, it may cause electric shock when breakdown or short circuit occurs.
- If your electric outlet does not have grounding terminal, consult an electric specialist.



● **Do not install the product where direct sunlight reaches.**

- It may cause decolorization and discoloration.



● **Do not rub the control panel or seat with dry or rough cloth.**

- The surface of the product may lose luster.

NO



● **Do not use the product when it does not function properly.**

- It may cause fire or electric shock.
- Have it repaired and use when it works normally.

NO



● **Pull out the plug when not in use for a prolonged period.**



● **Do not push the buttons by force.**

- It may cause breakdown.

NO



● **Do not slam down the cover to shut it.**

- It may cause damage.

NO



● **Do not place any liquid container with its content in it.**

- If liquid seeps into the product, it may cause electric shock.

NO



※ Caution

Please do not slam down the seat or cover. It may cause breakdown.

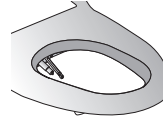


FEATURES

In addition to cleansing, bidet and drying functions, this Bidet also has the following features.

● TWIN NOZZLES

- Separate cleansing nozzle and bidet nozzle enhances hygiene.



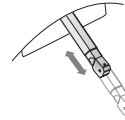
● ANTI-SLAM DESIGN

- The seat and the cover close softly.



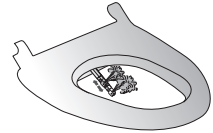
● ADJUSTABLE NOZZLE POSITION

- You can adjust the position of the nozzle to your choice.



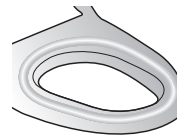
● NOZZLE MOVEMENT

- The nozzle moves forward and backward during cleansing or bidet operation.



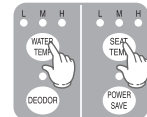
● HEATED SEAT

- The heated seat ensures comfort even in winter.



● TEMPERATURE ADJUSTMENT

- You can adjust the temperature of water and the seat to your choice.



● FRAGRANCE

- Fragrance can be mounted and used to maintain fragrant air.



(Except PB-X1000, PB-X800)

● WATER FILTER

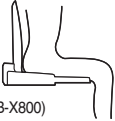


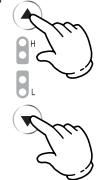


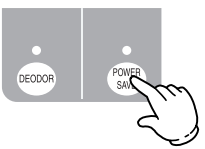
- Water filter makes water even cleaner. (Connect in the right direction)



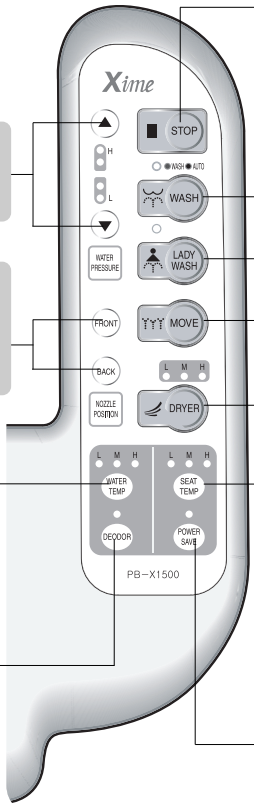
(Except PB-X800)



CONTROL PANEL AND ADJUSTMENTS

<p>SEAT SENSOR</p> <ul style="list-style-type: none"> During bidet operation, a sensor automatically detects when someone sits on the seat preventing operational error. To stop this function, please press the button of "Seat Temp." during 3 seconds.  <p>(Except PB-X800)</p>	<p>DEODORIZATION</p> <ul style="list-style-type: none"> Semi-permanent catalysis deodorizer keeps the air fresh.  <p>(Except PB-X800, PB-X1000, PB-X2000)</p>
<p>DRYER</p> <ul style="list-style-type: none"> 4 levels dry function is available after using cleansing or bidet function.  <p>(Except PB-X800, PB-X1200)</p>	<p>WATER PRESSURE ADJUSTMENT</p> <ul style="list-style-type: none"> 4 levels of water pressure are available for your choice. 
<p>LADY WASH</p> <ul style="list-style-type: none"> This is for feminine hygiene. 	<p>WASH</p> <ul style="list-style-type: none"> This is for anal cleaning. 
<p>POWER-SAVE</p> <ul style="list-style-type: none"> Instead of turning the power completely off, this function maintains the water and seat temperature at 25°C (77°F) maximizing power-saving. When anybody sit on the seat, this function automatically stops, and returns to all functions you already set. <p>(Except PB-X800)</p> 	

Before Use



STOP button
Press this button to stop operation.

WASH/AUTO button
Use this button to select the nozzle for anal cleaning. Press this button two times to use Auto-cleaning.

LADY WASH button
Use this button to select the nozzle for feminine hygiene.

MOVE button
Use this button to move the nozzle forward or backward.

DRYER button
Use this button to select one of 4 levels of drying air temperature. (Except PB-X1200)

SEAT TEMPERATURE button
Use this button to select one of 4 levels of toilet seat temperature. To stop seat sensor, please press the button of "Seat Temp." during 3 seconds.

POWER-SAVE button

WATER PRESSURE buttons
Use these buttons to adjust water pressure.

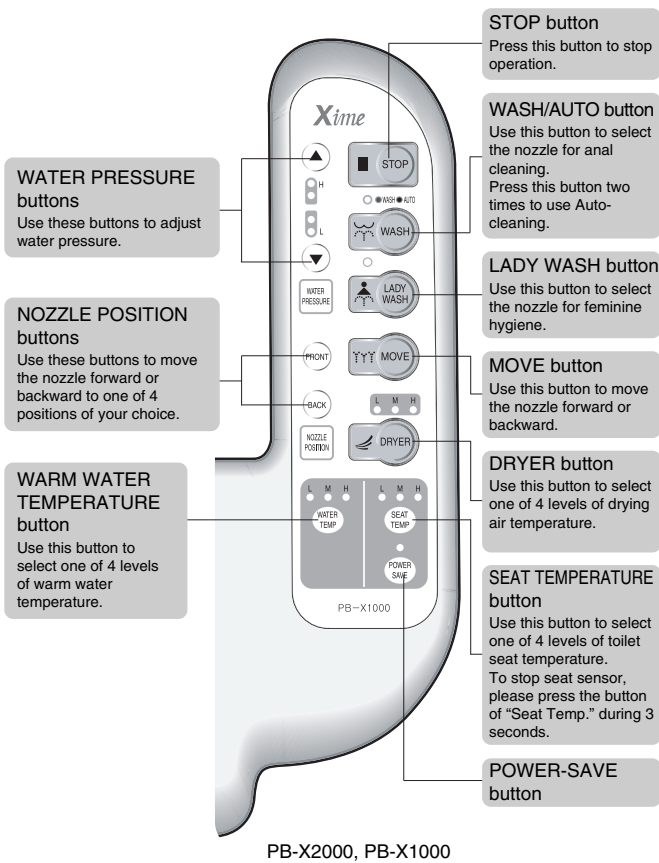
NOZZLE POSITION buttons
Use these buttons to move the nozzle forward or backward to one of 4 positions of your choice.

WARM WATER TEMPERATURE button
Use this button to select one of 4 levels of warm water temperature.

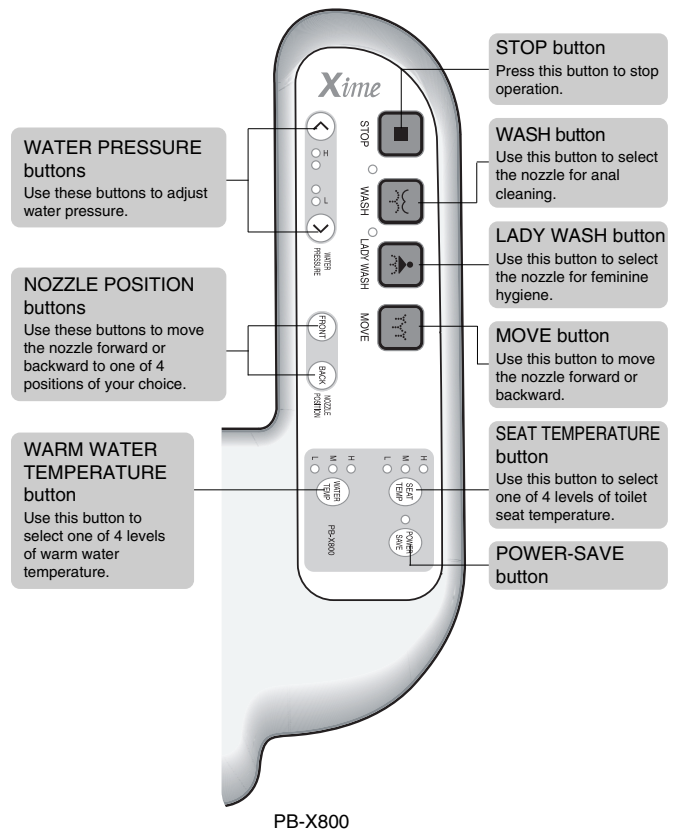
DEODORIZATION button
Use this button to turn on/off the deodorization function.

PB-X1500

PB-X2500, PB-X1500, PB-X1200



PB-X2000, PB-X1000



PB-X800

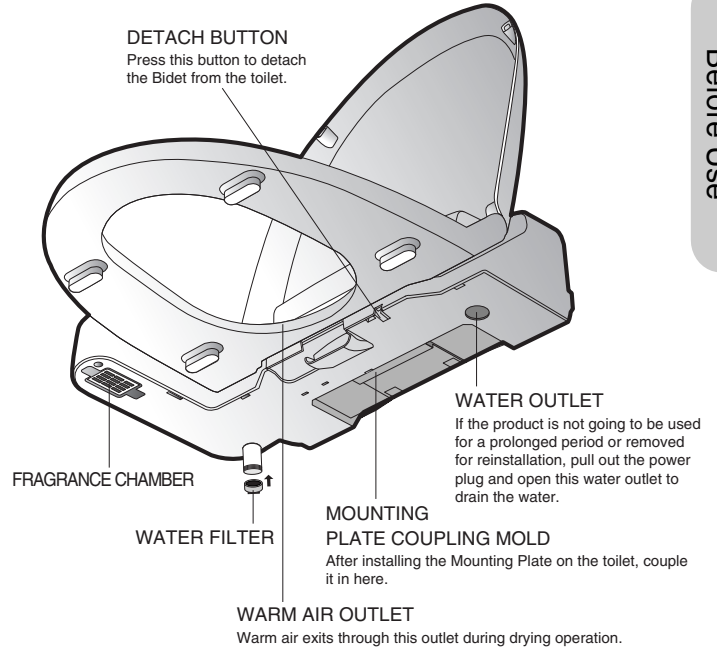
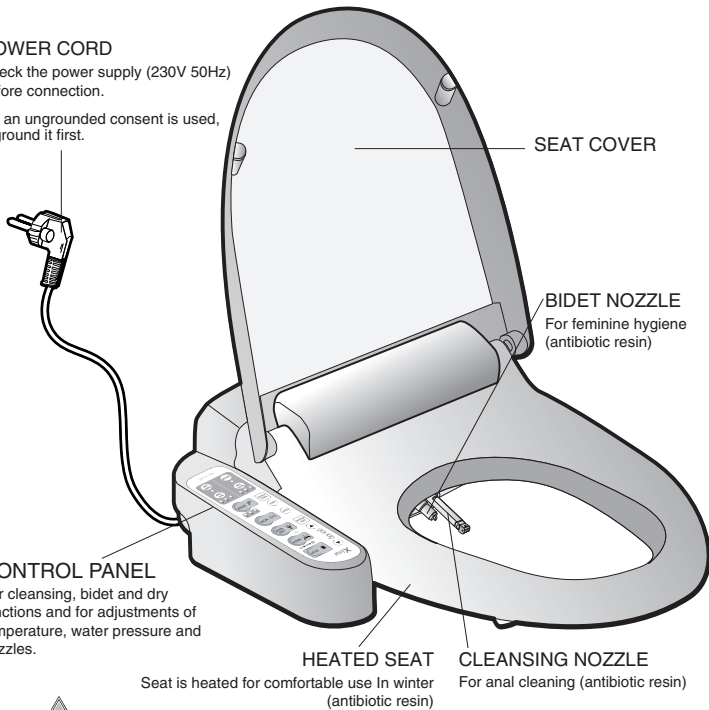


NAME OF PARTS

POWER CORD

Check the power supply (230V 50Hz) before connection.

※If an ungrounded consent is used, ground it first.



Before Use

Other Parts(Accessories)

Mounting Plate (for Main Body)	Semi-sphere Stoppers	Fastening Bolts	Fastening Nuts

※Replaceable water filter is a consumable part. They are available from authorized service agents. Replacement Interval: Approx. 6 month if general water supply is used. (It may vary depending on the quality of water)

Other Parts(Accessories)

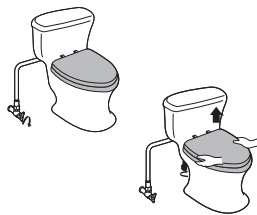
1 Bidet Hose	T-Valve	Water Filter (Except PB-X800)	

INSTALLATION

1. Preparation

● Close the water supply valve connected to the water tank of the product.

● Remove the existing toilet seat by loosening the bolts at the bottom.
● Store the removed seat.

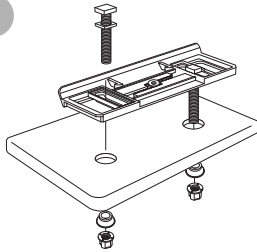


2. Installation of the Mounting Plate

● Place the Mounting Plate on the toilet.

● Align the holes in the mounting plate with the holes in the toilet and insert the fastening bolts with bolt stoppers from above.

● Fasten the semi-sphere Stoppers and fastening nuts as shown in the picture.



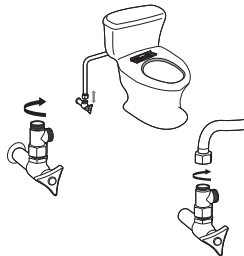
Note The adjustment allowance of Mounting Plate position is 140~200mm along sideways and 40mm back and forth.

3. Connection of Hoses and installation of Main Body

● Check if the existing water valve is properly closed and detach the water tank hose of the toilet from the existing water tap.

● Connect the T-Valve to the water tap (Insert rubber stopper)

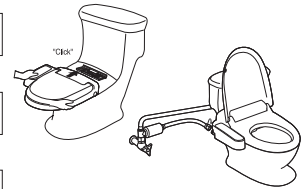
● Connect the detached water tank hose of the toilet to the T-Valve.



● Push the main body into the mounting plate till it clicks.

● Connect Bidet hose to the main body. (Check rubber packing)

● Open the valve of water supply



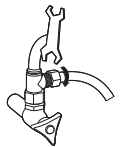
Note This Bidet may lightly move because being installed in the sliding one-touch installation method, which is not abnormal.

Caution : The distance between the back side of Bidet and water tank of toilet seat shall be within 10mm.

4. Power Connection and Water Valve Test

● Water Leakage Check

● Before connecting the power, open the water valve and see carefully if there is any leakage of water.



5. Test Operation

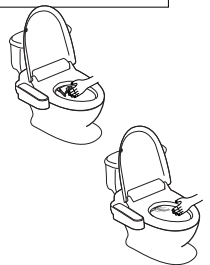
● Before Test Operation

- ① DEODORIZATION Check (PB-X1500, PB-X2500)
 - Check if air blows out from the right side back of the Main Body
- ② CLEANING and BIDET Functions Check
 - ※ Press WASH OR LADY WASH button



As this Bidet uses a water storage tank, pressing the CLEANSING button for the first time after the installation will cause delay of 1~2 minutes until the water fills the water tank and flows out through the nozzle.

- Check if water flows out of the nozzle after 1~2 minutes.
- Check if there is any leakage of water from the Main Body.
- Press the WATER PRESSURE button and check if the strength of water spray responds.
- Check if the temperature of the water from the nozzle is appropriate. (by feeling the water with hand lightly touching the nozzle end)
- Check if operation stops by pressing the STOP button.



- ③ DRY Function Check (Except PB-X800, PB-X1200)
 - Check if warm air blows out from right side of the nozzle by pressing the DRYER button.
 - Check if operation stops by pressing the STOP button.



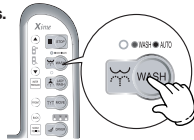
HOW TO USE

WASH Operation (for Anal Cleaning)

1. Press WASH button while sitting on the toilet seat.

The Cleansing Lamp lights up and spray of water jet begins. Operation lasts for 2 minutes.

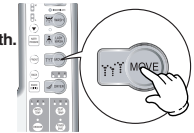
- ※ Position the nozzle using the NOZZLE POSITION buttons
- ※ Adjust the water strength using the WATER PRESSURE buttons.
- ※ Water temperature will drop from the selected temperature after about 30 seconds and will reach ambient temperature after about 40 seconds from operation but it is normal.



2. Press MOVE button

Cleansing continues while the nozzle moves back and forth.

- ※ The nozzle movement will last throughout the duration of Cleansing operation.
- ※ Position the nozzle using the backward and forward adjustment buttons.



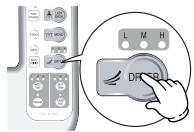
3. Press DRY button (Except PB-x800, PB-X1200)

Drying is quicker if you wipe the wet area lightly with toilet paper before using this function.

- ※ Operation lasts for 3 minutes.

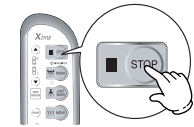
By pressing the button.....

Wind → Low → Mid → High → Off



4. Press STOP button

All functions have set duration of operation but pressing the START button in the middle of use will stop all the functions immediately.



Auto-Cleaning (Except PB-X800)

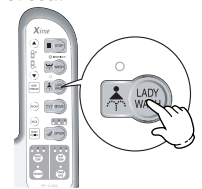
- After sitting on the seat, press "Wash" button two times.
- The Auto-cleaning lamp lights up (green) and spray water for 1 minute.
- After cleaning, start dry function in the level of middle for 2 minutes.
- Position the nozzle position button.
- Adjust the water strength using the Water Pressure button.
- Water temperature will drop from the selected temperature after about 30-40 seconds.
- You can start / stop the seat sensor function. : Press "Seat Temp" button for 3 seconds.

LADY WASH Operation (Bidet)

1. Press LADY WASH button while sitting on the toilet seat.

The Lamp lights up and spray of water jet begins. Operation lasts for 2 minutes.

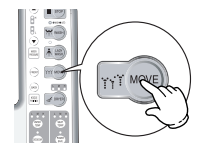
- ※ Position the nozzle using the NOZZLE POSITION buttons
- ※ Adjust the water strength using the WATER PRESSURE buttons
- ※ Water stream is softer and sprays wider area
- ※ Water temperature will drop from the selected temperature after about 30 seconds and will reach ambient temperature after about 40 seconds from operation but it is normal. (Since BIDET operation uses more water than Cleansing operation, the duration of warm water flow may be shorter)



2. Press MOVE button

Cleaning continues while the nozzle moves back and forth.

- ※ The nozzle movement will last throughout the duration of Bidet operation.
- ※ Position the nozzle using the backward and forward adjustment buttons.



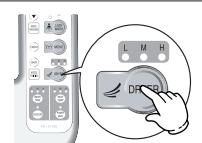
3. Press DRYER button (Except PB-X800, PB-X1200)

Drying is quicker if you wipe the wet area lightly with toilet paper before using this function

- ※ Operation lasts for 3 minutes.

By pressing the button.....

Wind → Low → Mid → High → Off



4. Press STOP button

All functions have set duration of operation but pressing the START button in the middle of use will stop all the functions immediately.



While the water is being sprayed, Press ▲ High or ▼ Low button

- ※ Initial pressure after the installation is High
- ※ If water does not flow due to low water pressure, set to High using the adjustment button



● POWER-SAVE function saves the cost of electricity by keeping the warm water and the toilet seat at low temperature.

After pressing Power-Save button

- Seat temperature keep 77 °F during initial 1 hour and lower 68 °F after 1 hour.
- Water temperature keep 85 °F during initial 1 hour and lower 77 °F after 1 hour.
- Pressing the Power-Save button again will automatically return to the set temperature.
- ※ When you seat during "power-Save" mode
- ※ Return to previous setting and Seat warms about 1-2 minutes and Water warms about 3-5 minutes.
- ※ PB-X1000M model returns to the set temperature if press "power-Save"
- ※ If the power plug has been pulled out or power failure occurred, all settings are cancelled. They should be reset.



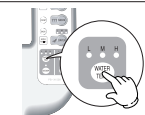
Press DEODORIZATION button while in operation. (PB-X1500, PB-X2500)

- Deodorization Lamp lights up and deodorization begins.
- ※ DEODORIZATION starts immediately when the button is pressed while sitting on the seat.
- ※ Pressing the DEODORIZATION button again will stop the DEODORIZATION after 5 minutes from the start of its operation.
- ※ If stand up without pressing "Stop" button, automatically will stop after 2 minutes.
- ※ DEODORIZATION does not stop by pressing the STOP button.
- ※ Using the DRY function during DEODORIZATION suspends the DEODORIZATION while DRY operation lasts.



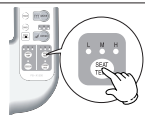
Press WARM WATER button

- Warm Water lamp lights up and heating of cleansing water begins.
- ※ Every time the button is pressed, the position of the Warm Water Temperature Indicator Lamp shifts.



Press SEAT TEMPERATURE button

- The Seat Temperature Lamp lights up and seat heating begins.
- ※ Every time the button is pressed, the position of the Seat Temperature Indicator Lamp shifts.



- The toilet seat may occasionally wobbles slightly when someone sits on it but it is normal. It is because the product was designed for one-touch mounting on to the toilet.
- The capacity of the Warm Water Tank of the Main Body is about 1.2 liter. It will be drained after about 40 seconds of WARM WATER operation. It will heat up again after 5-7 minutes from the end of operation.



CLEANING

Always unplug the power cord before cleaning.

● Water Outlet and Filter

- ① Close the water supply valve
- ② Press the DETACH button and pull the product forward.



- ③ Detach the filter section of the water supply valve at the back of the Bidet and clean the filter using a soft brush to remove foreign matters. (Accumulation of foreign matters will cause reduction of sprayed water through the nozzles.)



● Exterior

- Use soft sponge or cloth and neutral detergent for cleaning.
- Detach the toilet seat by pulling the stub for detaching.

● Nozzles

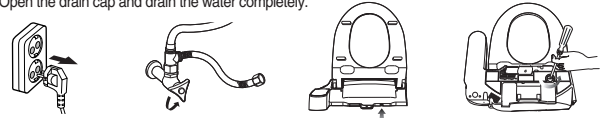
- If press "forth" button of Nozzle position during 3 seconds, Nozzle will come out.
- Gently pull the end of the nozzle forward.
- Scrub the end gently using a soft brush.
- Be careful not to damage the holes of the nozzle.
- If press "Stop" button after cleansing, the nozzle return to the body.
- ※ Blocking the nozzle mouth during cleaning may disturb the spray angle. Be careful not to block or damage the nozzle.



STORING

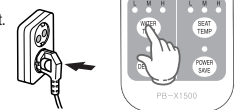
● Storing the Bidet for a prolonged period of suspended use

1. Pull out the plug from the power outlet.
2. Close the water supply valve.
3. Detach the Bidet by pressing the DETACH button on the side.
4. Open the drain cap and drain the water completely.



● Prevention of freezing

1. Check if the power plug is firmly in place in the power outlet.
2. Adjust the temperature using the WATER TEMP button.
- Keeping warm of the warm water tank will prevent the water from freezing.
- If the toilet room is not heated, wrap the connecting pipes or use another heater.





ITEMS TO CHECK BEFORE REQUESTING A SERVICE

● Can not operate the Bidet at all

- Is the power plug not loose?
- Power failure perhaps?



● No water stream

- Check if the water supply valve (water tap) is open
- Is the nozzle not blocked?
- Check if the water filter of the water supply valve (Bidet) is not blocked.
- No water supply perhaps?
- If the Bidet is used for the first time after the installation, it takes 1-2 minutes until the water fills the tank before it begins to flow out.



● Water stream is very weak

- Check the indicator lamp to see if the water pressure setting is too low.
- Open the filter cap and check the filter.
- Close the other water taps to improve the water flow.



● Warm water is not warm enough

- Isn't the WATER TEMPERATURE button set to "OFF"?
- The capacity of the warm water tank is for about 1 minute's use after which the water is no longer warm and it will take about 7 minutes until the water is warmed up again to the set temperature.



● Water leaks

- Fasten the connection of the water supply hose again
- Check all the connection parts. Especially see if any rubber stopper is missing.



● Warm air or the toilet seat is not warm enough

- Isn't the temperature adjustment button of DRY or TOILET SEAT set to "OFF"?



● Water drips while not in use

- If the water in the warm water tank is heated up, it expands and seeps through the nozzle.
- Water spray activated before and after the use is to clean the nozzle and is normal.



SPECIFICATIONS

PRODUCT NAME		Automatic Cleansing & Drying Toilet
MODEL		PB-X800 / PB-X1000 / PB-X1500 / PB-X2000 / PB-X2500
RATING		AC 230V 50Hz
POWER CONSUMPTION		Max. 580W
POWER CORD		1.5m (length)
SUPPLYING WATER PRESSURE		98-735kPa, 0.7-7.5kgf/cm ²
DIMENSION (mm)		483(width) x 530(depth) x 137(height)
WEIGHT		5kg
WARM WATER CLEANSER	ANAL CLEANING	Max. 1.1min. Water Stream Angle 55°, Self-cleaning Type
	BIDET	Max. 1.3min. Water Stream Angle 55°, Self-cleaning Type Move and Massage Functions, Position Adjustment
	WATER PRESSURE ADJUSTMENT	4-level adjustment each of Anal Cleaning and Bidet (Very Weak, Weak, Medium, Strong), Mycom Control
	TEMPERATURE ADJUSTMENT	4-level adjustment (OFF, Low:33°C, Medium: 37°C, High: 41°C)
	POWER CONSUMPTION OF WATER HEATER	530W
	TANK CAPACITY	1.2 liter
TOILET SEAT HEATER	TEMPERATURE ADJUSTMENT	4-level adjustment (OFF, Low:34°C, Medium: 38°C, High: 42°C)
	POWER CONSUMPTION OF HEATER	50W
	OTHERS	Damper (Slowdown) function
WARM AIR DRYER	TEMPERATURE ADJUSTMENT	4-level adjustment (Room, Low:35°C, Medium: 40°C, High: 45°C)
	POWER CONSUMPTION OF HEATER	250W
DEODORIZER		Catalysis type

* If the water pressure is lower than 0.7kgf/cm²(10psi) nozzles may not fully extend or water stream will be weak.

* The same models equipped with internal water pump is available from the factory.



MEMO

A series of horizontal dotted lines for writing, spanning the width of the page.



MEMO

A series of horizontal dotted lines for writing, spanning the width of the page.