

Wibtek Warranty Card

Dear customers,

Thank you so much for giving us a chance to provide you with quality service. For better service for you, please kindly read the following warranty policy carefully and keep this warranty card properly.

1. If you have any problems or concerns about your motherboard, we suggest you contact your dealer for technical support first. If you would like to contact us for further technical support, please send us an email to support@wibtek.com with detailed description of the problem.

2. This motherboard is covered by 3 years warranty.

3. Warranty is invalid for the following conditions:

- Out of warranty period;
- Damage from natural disaster;
- Damage from misuse, wrong maintenance or conservation;
- Serial label is removed, broken or altered;
- Disassembled by end-user or non-Wibtek-authorized third party;
- Problem caused by other improper usage.
- For the motherboard out of warranty, we are entitled to charging an extra repair cost.

4. Please have the following information handy before you contact us for fast and quick processing:

- Invoice or Purchase receipt
- User Data Form
- Intact Serial Label in your motherboard (Please note that Serial Label can be found on the motherboard.)

5. User Data Form

The User Data Form below should be filled in by you and your dealer when you buy this motherboard. The date of purchase in this form will be considered as the start date of our warranty service which should conform to that in the invoice or purchase receipt. If the date of purchase cannot be verified, the warranty period will begin from the date of manufacture based on the serial number of the motherboard.

Customer Name	Date of Purchase
Customer Contact Phone Number	Customer Contact Address
Dealer Name	Dealer Contact Address
Model Name	Serial Number

H61-M

Motherboard

User's Manual Version 01

Wibtek[®]

14.1.01.0016991-999
All rights reserved.

Welcome !

Thank you for buying Wibtek H61-M series motherboard!
This motherboard delivers the best quality with outstanding design and stable performance, giving you another upgraded experience in your computer journey!

Package Contents

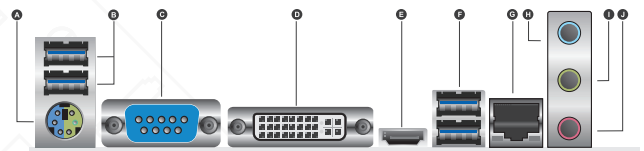
Before you start to install the motherboard and devices on it, please kindly check the items in your package with the following list.

Motherboard	Wibtek H61-M motherboard
Cable	2 x SATA cables
Accessory	I/O Shield
Application CD	Driver CD
Documentation	User Manual, DIY Guide

Specifications Summary

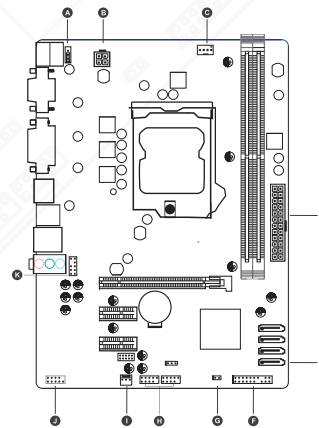
CPU	Intel LGA 1155 Socket Support Intel Core i7/i5/i3/Pentium/Celeron CPU in 1155-pin Support Intel Hyper-Threading Technology Support Intel Turbo Boost 2.0 Technology Support Enhanced Intel SpeedStep Technology (EIST)
Chipset	Intel H61 (B3 version)
Memory	2 x DIMM slots Maximum 16GB memory size Support DDR3 1333/1066 Mhz Support Dual Channel Memory architecture
Graphics	Integrated Intel Graphics 2000/3000 Support dual VGA output Support DirectX 10.1 Support Intel Quick Sync Video Technology
PCI Express 2.0 x 16	1
PCI Express 2.0 x 1	2
Back Panel I/O Ports	1 x D-Sub (VGA) 1 x DVI (Optional) 1 x HDMI (Optional) 1 x 10/100Mbps LAN 4 x USB 2.0 (Black) 1 x PS/2 Keyboard/Mouse 3 x Audio Jacks for 6 Channel High Definition Audio
Onboard Connectors for System Front Panel	1 x System panel connector (Reset, HD LED, Power LED, Power On/Off) 1 x Front panel audio connector
Onboard Connectors for I/O Ports	2 x USB 2.0 connectors support 4 x USB 2.0 ports 4 x SATA 3Gb/s (SATAII) ports 1 x COM (Serial) 1 x S/PDIF-out
Other Onboard Connectors	1 x CPU Fan connector 1 x Chassis Fan connector 24-pin ATX Power connector 4-pin ATX 12V Power connector 1 x Clear CMOS Jumper
BIOS Features	32Mb AMI BIOS; PnP, DMI2.5 WfM2.0, ACPI v3.0, SMBIOS v2.6 Compliant ACPI 1.1 Wake Up BIOS Flash by USB Disk
Software	Microsoft Windows 7 (64-bit and 32-bit)/Vista (64-bit and 32-bit)/XP (64-bit and 32-bit) Drivers

Back Panel I/O Ports



- A 1 x PS/2 Keyboard/Mouse
- B 2 x USB 2.0 (Black)
- C 1 x D-Sub (VGA)
- D 1 x DVI (Optional)
- E 1 x HDMI (Optional)
- F 2 x USB 2.0 (Black)
- G 1 x 10/100Mbps LAN
- H Line-in
- I Line-Out
- J MIC

Motherboard Layout



Onboard Connectors

- A 1 x Keyboard/Mouse Wake up connector
- B 4-pin ATX 12V Power connector
- C 1 x CPU Fan connector
- D 24-pin ATX Power connector
- E 4 x SATA 3Gb/s (SATAII) ports
- F 1 x System panel connector (Reset, HD LED, Power LED, Power On/Off)
- G 1 x Clear CMOS Jumper
- H 2 x USB 2.0 connectors support 4 x USB 2.0 ports
- I 1 x Chassis Fan connector
- J 1 x COM (Serial)
- K 1 x Front panel audio connector

Pin Definition and Jumper Setting

A Keyboard/Mouse Wake up connector

1 2	2 3
DISABLE	ENABLE

F F_PANEL

RESET	LED+	LED-	POWER
-------	------	------	-------

H USB 2.0

VCC	D0-D1	D-	D+	GND
-----	-------	----	----	-----

J COM

00D	01B	02B	03B
04D	05B	06B	07B
08D	09B	10B	11B
12D	13B	14B	15B
16D	17B	18B	19B
20D	21B	22B	23B
24D	25B	26B	27B
28D	29B	30B	31B
32D	33B	34B	35B
36D	37B	38B	39B
40D	41B	42B	43B
44D	45B	46B	47B
48D	49B	50B	51B
52D	53B	54B	55B
56D	57B	58B	59B
60D	61B	62B	63B
64D	65B	66B	67B
68D	69B	70B	71B
72D	73B	74B	75B
76D	77B	78B	79B
80D	81B	82B	83B
84D	85B	86B	87B
88D	89B	90B	91B
92D	93B	94B	95B
96D	97B	98B	99B
100D	101B	102B	103B
104D	105B	106B	107B
108D	109B	110B	111B
112D	113B	114B	115B
116D	117B	118B	119B
120D	121B	122B	123B
124D	125B	126B	127B
128D	129B	130B	131B
132D	133B	134B	135B
136D	137B	138B	139B
140D	141B	142B	143B
144D	145B	146B	147B
148D	149B	150B	151B
152D	153B	154B	155B
156D	157B	158B	159B
160D	161B	162B	163B
164D	165B	166B	167B
168D	169B	170B	171B
172D	173B	174B	175B
176D	177B	178B	179B
180D	181B	182B	183B
184D	185B	186B	187B
188D	189B	190B	191B
192D	193B	194B	195B
196D	197B	198B	199B
200D	201B	202B	203B
204D	205B	206B	207B
208D	209B	210B	211B
212D	213B	214B	215B
216D	217B	218B	219B
220D	221B	222B	223B
224D	225B	226B	227B
228D	229B	230B	231B
232D	233B	234B	235B
236D	237B	238B	239B
240D	241B	242B	243B
244D	245B	246B	247B
248D	249B	250B	251B
252D	253B	254B	255B

K F_AUDIO

LINE-IO	LINE_L	LINE_R
MIC-IO	MIC_L	MIC_R
AGND	MIC_L	MIC_R