

# Service Manual

Dishwasher  
integratable fullдор  
DWH B80 W  
601 186 43

<b>Model Version</b>		Page
	DWH B80 W 8542 400 53000	
	Technical data	2 - 3
	Spare part list	4 - 5
	Exploded view	6 - 7
	Circuit diagram	8
	Program diagram	9
	Text/Legend	10 - 15
	Family	WRC - IC MID 5



**Technical data****Dimension**

Height	82.0 - 87.0cm
Width	59.7 cm
Depth	57.0 cm
Weight	50 kg

**Wooden door for Full Door appliances**

Thickness min.	16	mm
Thickness max.	20	mm
Width min.	592	mm
Width max.	595	mm
Height min.	620	mm
Height max.	718	mm
Weight min.	2.5	kg
Weight max.	6.5	kg
Max. stick out over lower edge of appliance door	92	mm
Height of plinth min.	93	mm

**Electronic boards**

Service boards	see spare part list
Serial boards	see on the boards itself
Programming of version and programmed control board, see „Service“ and „Data set“ on rating plate of inner door:	
UCB (User/Control board)	53481
Data set	53471
Basic UCB (User/Control board) not programmed see on the board itself	4619 727 14212
For programming please use Service Assistance Module (S.A.M.)	4812 289 98001
plus cable	4812 289 98004

**Succession of programs**

Programs	see program diagram
Succession	P1a-P3a-P5k-P11a-P7b

**Datas Energy Label**

Reference program	P5k
Energy Performance	3 stars

**Alarms**

Refill rinse aid

**Options**

Half load

**Program information**

End - Acoustic signal

All programs will be locked after start. Changing the program or finishing the program will be possible only after pressing the start button for longer then 1.5 sec. (Break by customer)

A switching off the appliance or unplug the appliance for a while, this will frozen the program step and later on, the program continuos on the same position.

Exception: Switching off the appliance or unplug the appliance during the drying phase, this will lead directly to the end of the program.

**Water Volume at permanent spray system**

Water	Volume	Level
Back rinse 3x	1.0 l	60 mm
Prewash	4.8 l	120 mm
Main wash	4.2 l	118 mm
Intermediate rinse 1	4.2 l	118 mm
Intermediate rinse 2	4.2 l	118 mm
Clear rinse	4.2 l	118 mm
Safety/ overflow	8.5 l	141 mm

**Measuring the level**

Remove the coarse sieve, put in a measuring meter into the sump, measure the hight of the water level.

**Detergent max.**

Pre-wash	10	cm <sup>3</sup>
Main-wash	40	cm <sup>3</sup>
Rinse aid	135	cm <sup>3</sup>
6 Dosage steps	1 - 6	ml

**Water pressure**

Inlet pressure	0.3 - 10	bar
Spray pump pressure	0.3	bar

**Rotations**

Spray pump motor	2800	RPM
Drain pump motor	3000	RPM
Spray arm lower	30 - 40	RPM
Spray arm upper	30 - 40	RPM

## Technical data

### Flow rates/ Inlet volume

Flow meter (at 0.3 bar = quantity 1.1 l/min)	208	Imp/l
Spray pump	45 - 65	l/min
Drain pump	16	l/min
Pump height max.	1.1	m
Inlet valve	4	l/min
Spray arm lower	~ 33	l/min
Sprayarm upper	~ 27	l/min
Shower/ Sprayarm top	~ 8	l/min

### Electrical base data

Voltage	240	V
Frequency	50	Hz
Total power	2.4	kW
Fuse	10	A

### Spray pump motor permanent spray system

Voltage	220/ 240	V
Power consumption	130	W
HI	62	$\Omega$
HA	74,8	$\Omega$
Capacitor	4	$\mu$ F

### Drain pump motor

Voltage	220/ 240	V
Power consumption	30	W
Resistance	146	$\Omega$

### Heating - 1 Element system

Voltage	240	V
Power consumption	2.22	kW
Resistance	24.5	$\Omega$
Heating speed	~ 2.0	$^{\circ}$ C/min
Temperature on surface	~ 115	$^{\circ}$ C
Safety thermostat self reset (Temperature of water)	~ 85	$^{\circ}$ C
Fuse	206	$^{\circ}$ C

### Water safty options

Waterstop system	Reflex Waterstop
------------------	------------------

### Single electric water inlet valve

Voltage	220/ 240	V
Frequency	50/ 60	Hz
Resistance	3.76	k $\Omega$

### Coil of dispenser

Voltage	220/ 240	V
Frequency	50/ 60	Hz
Resistance	1.3	k $\Omega$

### Reed contacts

flow meter  
rinse aid control

### NTC

20 $^{\circ}$ C	58.1	k $\Omega$
25 $^{\circ}$ C	47.1	k $\Omega$
30 $^{\circ}$ C	38.2	k $\Omega$
40 $^{\circ}$ C	25.4	k $\Omega$
50 $^{\circ}$ C	17.2	k $\Omega$
60 $^{\circ}$ C	11.8	k $\Omega$
70 $^{\circ}$ C	8.3	k $\Omega$
80 $^{\circ}$ C	6	k $\Omega$
85 $^{\circ}$ C	4	k $\Omega$

### Accessory

If you need spare parts apart from the spare part list have a look in the Service Bulletin 4812 718 40084.

For higher mounted Dishwashers to prevent the drain off effect - also usable for lower drain pipes and to prevent the failure F8 use Kit 4812 310 18993.

**Spare part list**

**Model** DWH B80 W  
**Service No.** 854240053000  
**Version** 854240053000

Pos. No.	12NC Code	Description
003 0	<b>4812 440 11455</b>	Crossbar
004 0	<b>4812 440 11463</b>	Drip tray assy
004 1	<b>4812 401 18402</b>	Holder
011 0	<b>4812 505 18418</b>	Foot long
011 1	<b>4812 528 98004</b>	Shaft flexible
011 2	<b>4812 528 78032</b>	Slide disc f.foot
011 3	<b>4812 535 98054</b>	Gear
011 4	<b>4812 528 98001</b>	Roll f.foot
022 0	<b>4812 440 11467</b>	Side panel left metallic
022 1	<b>4812 440 11466</b>	Side panel right metallic
024 0	<b>4812 440 11468</b>	Panel rear
040 1	<b>4812 417 18774</b>	Hinge left
040 2	<b>4812 417 18773</b>	Hinge right
044 0	<b>4812 492 38362</b>	Spring f.door
047 0	<b>4812 404 48746</b>	Brake f.door
047 1	<b>4812 401 18707</b>	Band,brake
047 2	<b>4812 404 68023</b>	Hook
053 0	<b>4812 440 89138</b>	Plinth w/o hohle sheet
065 0	<b>4812 466 48051</b>	Insulation without outcut
103 0	<b>4812 440 11465</b>	Door outer
105 0	<b>4812 404 48611</b>	Fastener door
105 2	<b>4812 505 68022</b>	Clip
105 3	<b>4812 404 48633</b>	Fastener
105 4	<b>4812 310 58116</b>	Template FD
120 0	<b>4812 440 19456</b>	Door inner
120 1	<b>4812 440 11454</b>	Batten
130 0	<b>4812 417 58398</b>	Tilt lock
131 0	<b>4812 401 18416</b>	Hook lock
175 3	<b>4812 466 68867</b>	Batten
191 0	<b>4812 466 68564</b>	Gasket door
192 0	<b>4812 466 68467</b>	Gasket door lower
241 0	<b>4812 458 19027</b>	Basket upper straight
241 1	<b>4812 458 19264</b>	Holder cups right saph.VBL
241 3	<b>4812 528 88113</b>	Wheel basket upper (set)
241 6	<b>4812 310 18757</b>	Holder glasses kit wh
241 6	<b>4812 458 19355</b>	Holder glasses wiring alu.VBL
241 6	<b>4812 535 78095</b>	Bearing wiring glassholder saph.
241 8	<b>4812 466 68848</b>	Spacer saph
242 0	<b>4812 310 28136</b>	Basket lower KIT
242 1	<b>4812 528 88069</b>	Wheel basket lower wh
243 5	<b>4812 310 38897</b>	Cutlery basket KIT
243 6	<b>4812 458 19296</b>	Grille saphire
261 0	<b>4812 462 79831</b>	Rail telescope, inner
261 1	<b>4812 462 79768</b>	Cap rail rear saph.
261 2	<b>4812 462 79902</b>	Cap rail front
263 0	<b>4819 520 18013</b>	Ball cage cpl.
263 1	<b>4812 310 48026</b>	Service kit balls plastic
265 0	<b>4812 404 49712</b>	Basket adjustm. VBL cpl.saph-opaco
265 2	<b>4812 404 48934</b>	Grip basket adj.opaco
301 0	<b>4812 453 71765</b>	Control panel
322 0	<b>4812 453 73459</b>	Insert
332 5	<b>4812 410 28556</b>	Cap f.beater
400 0	<b>4812 361 58434</b>	Motor +SP,50Hz,per.
405 0	<b>4812 360 18568</b>	Pump body Crin Serv.Part
405 2	<b>4812 530 29437</b>	Connection Outlet ServiceKit CRIN

Pos. No.	12NC Code	Description
420 0	<b>4812 121 18277</b>	Capacitor
421 0	<b>4812 121 18276</b>	Interf.filter
430 0	<b>4812 360 18558</b>	Pump,draining cpl.
430 1	<b>4812 466 68689</b>	Gasket
450 0	<b>4812 259 28892</b>	Heating element 2,04 kW
480 0	<b>4812 321 28416</b>	Cable harness IC-FD (LS6)
480 1	<b>4812 321 28475</b>	Cable UCB-DB
480 3	<b>4812 401 18418</b>	Protector f.wiring
490 0	<b>4812 321 18051</b>	Cable mains
490 1	<b>4812 321 28367</b>	Strain relief
503 0	<b>4812 282 10183</b>	Timer switch delay 3-6-9(DLB)
521 0	<b>4812 218 38347</b>	Control board SAM BASIC
521 0	<b>4812 218 38556</b>	Control board UCB
571 0	<b>4812 281 28462</b>	Valve inlet
583 0	<b>4812 271 28556</b>	Switch diaphragm
616 1	<b>4812 271 58184</b>	Contact reed rinsing agent
621 0	<b>4812 276 18493</b>	Switch on/off
623 0	<b>4812 271 38489</b>	Microswitch
633 0	<b>4812 271 38488</b>	Microswitch door
680 0	<b>4812 418 68371</b>	Combidosage cpl.w.KSM saph/opaco
680 1	<b>4812 466 68495</b>	Gasket
680 3	<b>4812 440 11209</b>	Lever,fastener combidos.
681 1	<b>4812 466 68497</b>	Gasket
681 2	<b>4812 440 18975</b>	Flap
682 0	<b>4812 466 68496</b>	Gasket
691 0	<b>4812 282 68051</b>	Feeler NTC
701 0	<b>4819 530 28926</b>	Hose inlet 2.5 m (Eltek)
701 1	<b>4812 310 18302</b>	Yoke
701 2	<b>4822 480 50159</b>	Sieve inlet
710 2	<b>4812 310 38896</b>	Threaded ring
710 3	<b>4819 466 69562</b>	Gasket set
714 0	<b>4812 462 79921</b>	Threaded cap
716 0	<b>4812 418 68377</b>	Reg.dosage
716 1	<b>4812 466 68475</b>	Gasket
716 2	<b>4812 462 78994</b>	Cover
717 1	<b>4812 462 79793</b>	Stopper
721 1	<b>4812 360 68689</b>	Spray arm lower. cpl. sa
722 0	<b>4812 360 68687</b>	Spray arm upper sa
722 2	<b>4812 360 68693</b>	Spray arm 2nd level cpl. saph
723 0	<b>4812 360 68691</b>	Douche ceiling
726 1	<b>4812 530 29331</b>	Tube assembly cpl.saph
726 2	<b>4812 505 18208</b>	Nut
743 1	<b>4812 530 28102</b>	Hose inlet
751 0	<b>4812 418 18338</b>	Water collector
755 0	<b>4812 530 29119</b>	Bend
755 2	<b>4812 530 48148</b>	Tray leak
756 0	<b>4812 360 58479</b>	Floater
761 0	<b>4812 480 58122</b>	Sieve fine
761 2	<b>4812 418 18337</b>	Cover sieve
761 3	<b>4812 418 18341</b>	Cover
761 4	<b>4812 530 58141</b>	O-Ring
763 0	<b>4812 480 58363</b>	Sieve coarse
781 0	<b>4812 530 29113</b>	Hose draining
781 3	<b>4812 281 28417</b>	Flap non-return
783 4	<b>4812 530 28904</b>	Hose 10x3x265+10

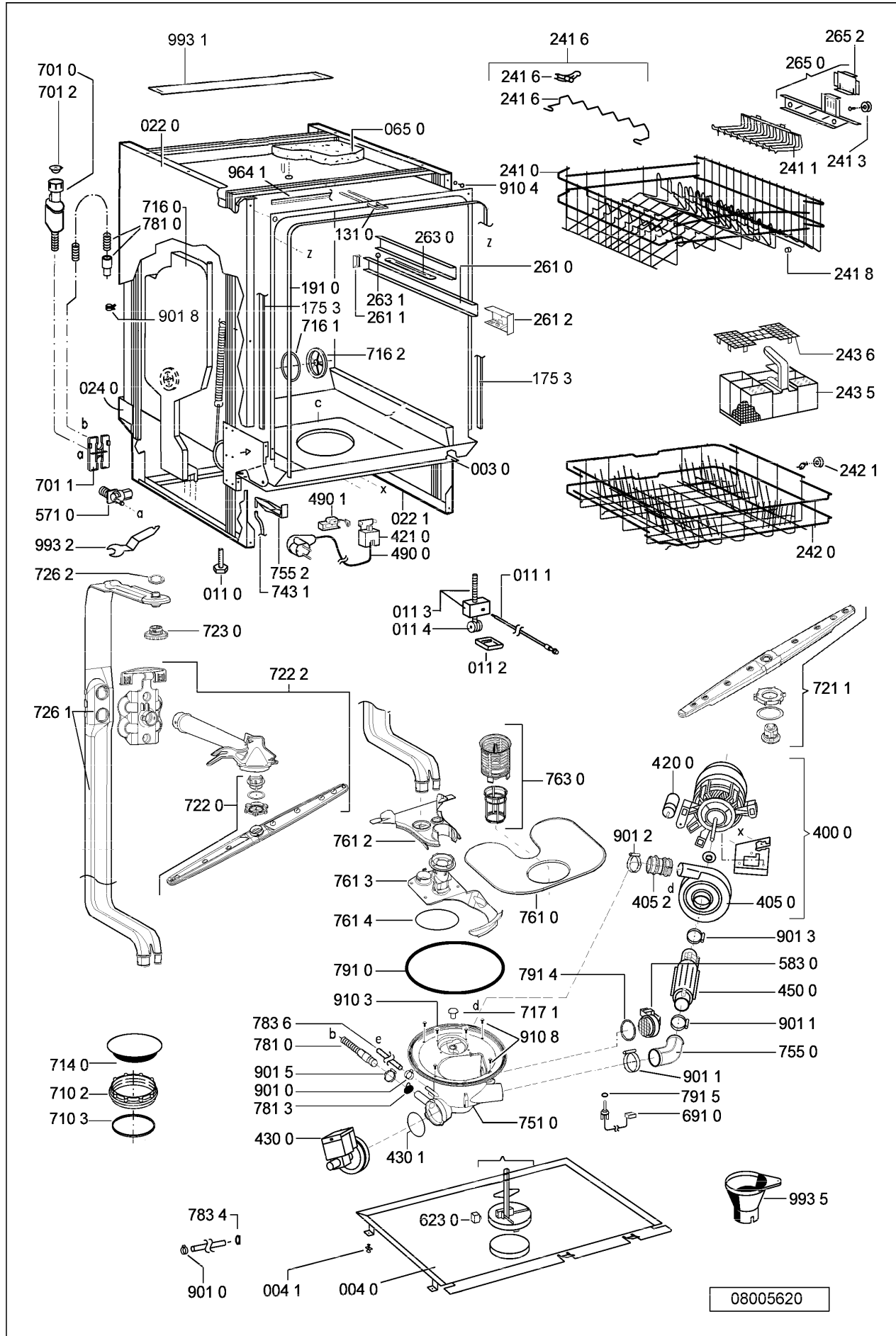
## Spare part list

**Model** DWH B80 W  
**Service No.** 854240053000  
**Version** 854240053000

---

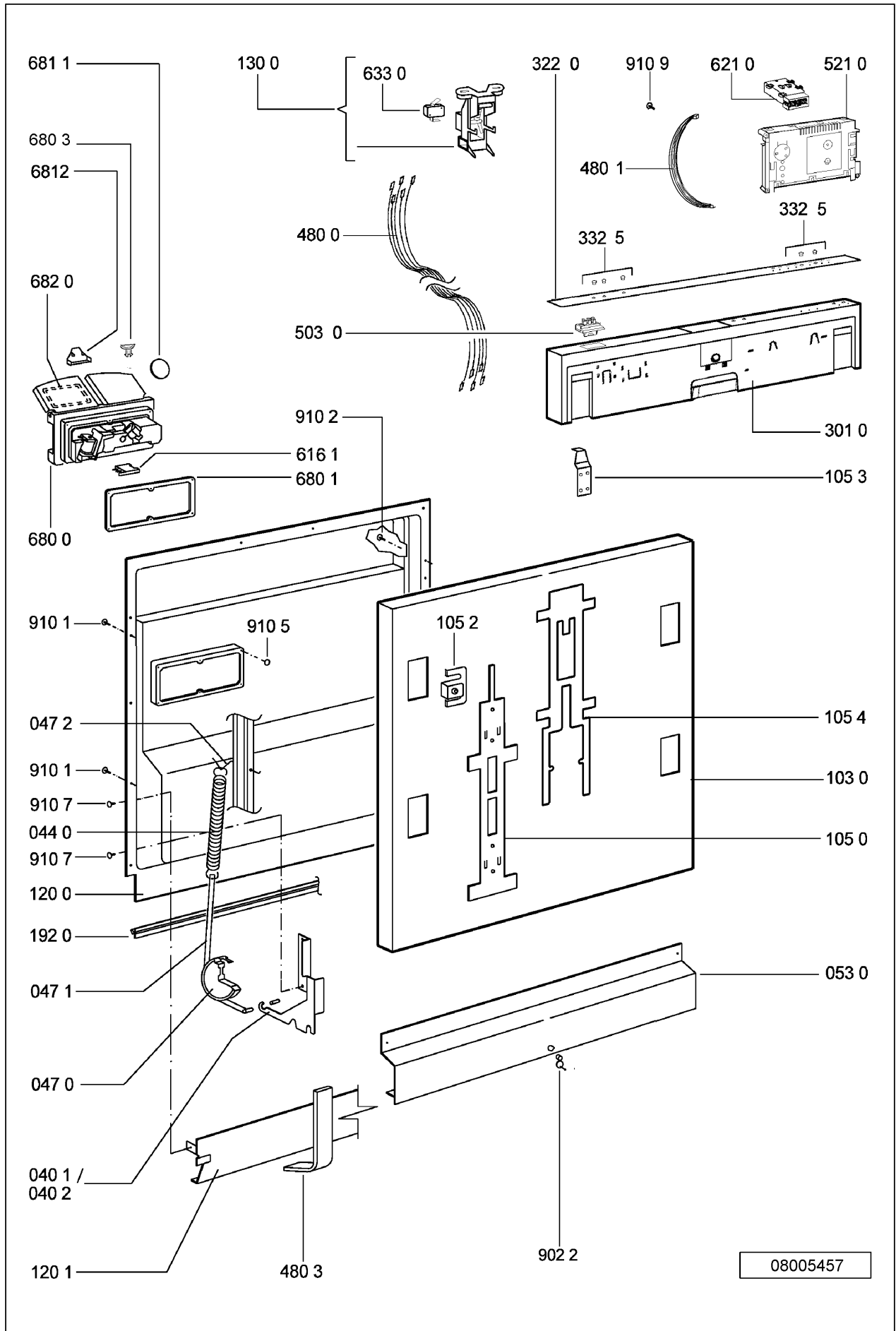
Pos. No.	12NC Code	Description
783 6	<b>4812 530 28824</b>	Hose 10,3X3X245
791 0	<b>4812 532 68099</b>	Gasket
791 2	<b>4812 530 58093</b>	Gasket
791 4	<b>4812 466 68503</b>	Gasket
791 5	<b>4812 466 68504</b>	Gasket
900 1	<b>4812 310 28351</b>	Fastener set n.sh. (IKEA)
901 0	<b>4812 401 18709</b>	Clamp hose S10-16/9-C7W1
901 1	<b>4812 401 18708</b>	Strap 050,0
901 2	<b>4812 401 18705</b>	Strap 033,1
901 3	<b>4812 401 18806</b>	Strap 47,0 mm
901 5	<b>4812 401 48588</b>	Strap 028,6
901 8	<b>4812 401 18711</b>	Clamp hose 25-29
902 2	<b>4812 404 78241</b>	Holder
910 1	<b>4812 502 18394</b>	Screw 3,5x14-H
910 2	<b>4812 502 18363</b>	Screw 4,0x12-H
910 3	<b>4812 502 18527</b>	Screw 4x15 T20
910 4	<b>4812 502 18741</b>	Screw M3,5x8-T15M
910 5	<b>4812 502 18739</b>	Screw 3,5x8 Tx15
910 7	<b>4812 502 18397</b>	Screw INOX A2 M 5X12
910 8	<b>4812 502 18389</b>	Screw 5x20 T20
910 9	<b>4812 401 18706</b>	Screw 2,5x18-H
964 1	<b>4812 466 68573</b>	Gasket housing upper
993 1	<b>4812 466 78388</b>	Foil protection
993 2	<b>4812 404 48753</b>	Key foot
993 5	<b>4822 532 80216</b>	Funnel salt

**Exploded view**



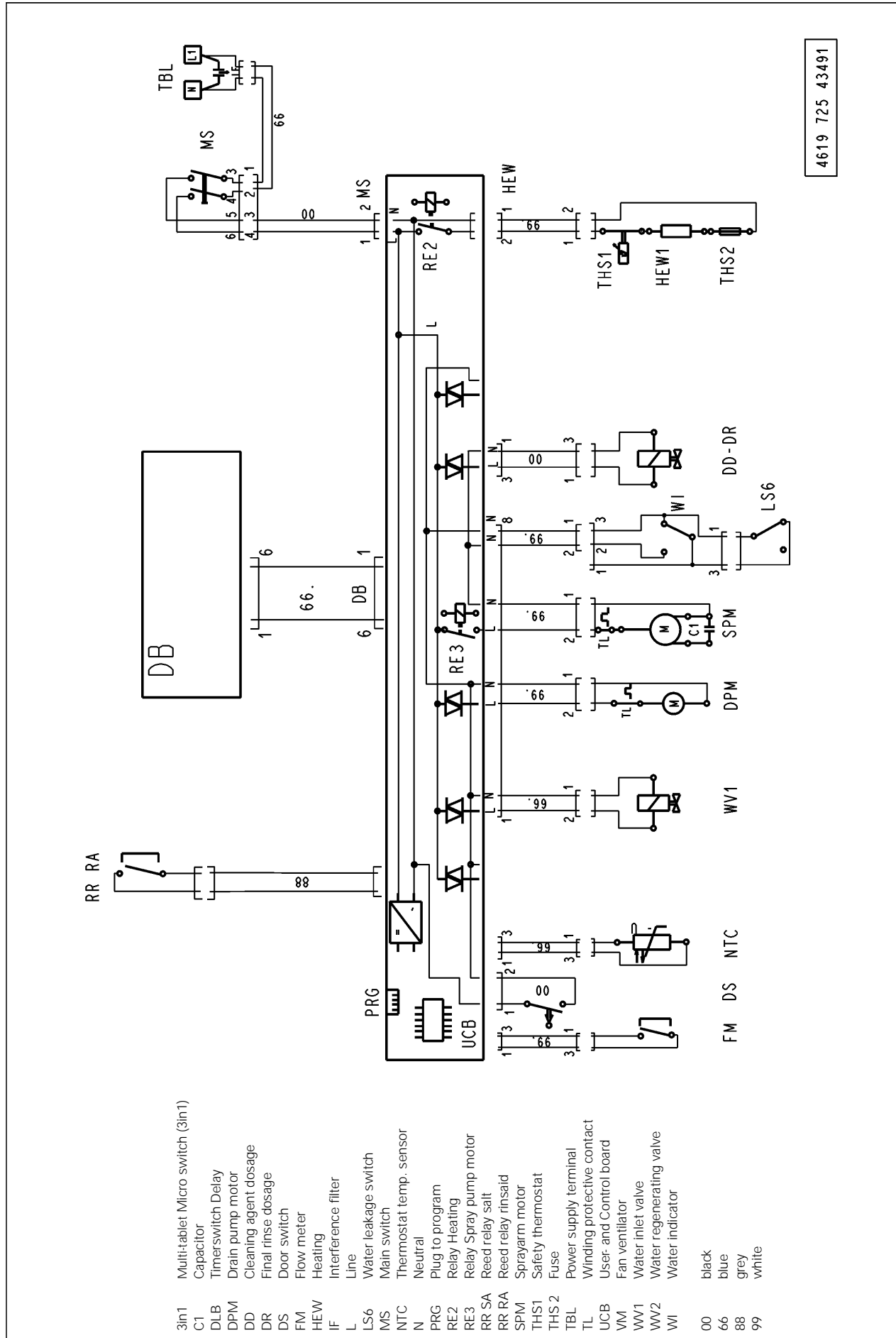
08005620

## Exploded view



08005457

**Circuit diagram**



- |       |                                  |
|-------|----------------------------------|
| 3in1  | Multi-tablet Micro switch (3in1) |
| C1    | Capacitor                        |
| DLB   | Timerswitch Delay                |
| DPM   | Drain pump motor                 |
| DD    | Cleaning agent dosage            |
| DR    | Final rinse dosage               |
| DS    | Door switch                      |
| FM    | Flow meter                       |
| HEW   | Heating                          |
| IF    | Interference filter              |
| L     | Line                             |
| LS6   | Water leakage switch             |
| MS    | Main switch                      |
| NTC   | Thermostat temp. sensor          |
| N     | Neutral                          |
| PRG   | Plug to program                  |
| RE2   | Relay Heating                    |
| RE3   | Relay Spray pump motor           |
| RR SA | Reed relay salt                  |
| RR RA | Reed relay rinsaid               |
| SPM   | Sprayarm motor                   |
| THS1  | Safety thermostat                |
| THS 2 | Fuse                             |
| TBL   | Power supply terminal            |
| TL    | Winding protective contact       |
| UCB   | User and Control board           |
| VM    | Fan ventilator                   |
| WV1   | Water inlet valve                |
| WV2   | Water regenerating valve         |
| WI    | Water indicator                  |
| 00    | black                            |
| 66    | blue                             |
| 88    | grey                             |
| 99    | white                            |



## Program diagram

		1	2	3	4	5	6	7	8	9	10	11	12	13	14	15	16	17	18	19	20	21	22	23	24	25	26	27	28	29	30	31	32	33	34	35	36	37	38	39	40	41	42	43																																																																																																																																																			
		PS1										PS2										PS3										PS4																																																																																																																																																															
<b>Program Table</b>																																																																																																																																																																																															
Tablet program	P14a																																																																																																																																																																																														
Half-Load	P12a/b																																																																																																																																																																																														
Auto Sensor	P10a																																																																																																																																																																																														
Sensor intensiv	P9a																																																																																																																																																																																														
Sensor Eco Normal	P8a																																																																																																																																																																																														
Sani Rinse Program "Sani"	P11a																																																																																																																																																																																														
Intensiv Program 70°C (from production-week 08/02)	P7a/b																																																																																																																																																																																														
Intensiv Program 70°C (for 60-Hz DW and others till prod.-week 07/02)	P7a																																																																																																																																																																																														
Normal Program 65°C	P13a																																																																																																																																																																																														
Normal Program 65°C	P6a																																																																																																																																																																																														
Normal Program 50°C	P5k																																																																																																																																																																																														
Normal Program 50°C	P5j																																																																																																																																																																																														
Normal Program 50°C	P5i																																																																																																																																																																																														
Normal Program 50°C	P5h																																																																																																																																																																																														
Normal Program 50°C	P5g																																																																																																																																																																																														
Normal Program 50°C	P5f																																																																																																																																																																																														
Normal Program 50°C	P5e																																																																																																																																																																																														
Normal Program 40°C	P5d																																																																																																																																																																																														
Normal Program 50°C	P5c																																																																																																																																																																																														
Normal Program 50°C	P5b																																																																																																																																																																																														
Normal Program 50°C	P5a																																																																																																																																																																																														
Eco Program 50°C	P4a																																																																																																																																																																																														
Express Program 30°C	P3a																																																																																																																																																																																														
Glasses program 40°C	P2a/b																																																																																																																																																																																														
Prewash program cold	P1a																																																																																																																																																																																														
		Back rinse										Prewash										Mainwash										Intermediate rinse										Clear rinse										Drying																																																																																																																																											
		only after regeneration																				step 1										step 2																																																																																																																																																															
		t3 + 30 s										FM J J L L										t3 + 30 s										FM J J L L										t2 [°C]										30 s										t3 + 30 s										FM J J L L										t2 [°C]										30 s										t2 [°C]										t3 + 30 s										1,5 min										3 s										1 s										30 s										t3 + 30 s										t3 + 30 s										End									
<b>Contacts</b>																																																																																																																																																																																															
Water inlet valve WV1																																																																																																																																																																																															
Regenerating valve 2 WV2																																																																																																																																																																																															
Drain pump DPM																																																																																																																																																																																															
Heating relay RE2																																																																																																																																																																																															
Spray pump SPM																																																																																																																																																																																															
Dosage detergent + rinse aid DD-DR																																																																																																																																																																																															
Ventilation drying (optional) VM																																																																																																																																																																																															
<b>Function of the machine</b>																																																																																																																																																																																															
Startposition for all progr.																																																																																																																																																																																															
draining																																																																																																																																																																																															
filling + draining (1ltr.)																																																																																																																																																																																															
pause																																																																																																																																																																																															
filling + draining (1ltr.)																																																																																																																																																																																															
pause																																																																																																																																																																																															
filling + draining (1ltr.)																																																																																																																																																																																															
pause																																																																																																																																																																																															
draining																																																																																																																																																																																															
filling - rinsing																																																																																																																																																																																															
rinsing - heating																																																																																																																																																																																															
rinsing																																																																																																																																																																																															
rinsing - draining																																																																																																																																																																																															
filling - rinsing																																																																																																																																																																																															
rinsing - dos detergent																																																																																																																																																																																															
rinsing - heating																																																																																																																																																																																															
rinsing																																																																																																																																																																																															
rinsing - heating																																																																																																																																																																																															
rinsing																																																																																																																																																																																															
rinsing - draining																																																																																																																																																																																															
filling - rinsing																																																																																																																																																																																															
rinsing - draining																																																																																																																																																																																															
filling - rinsing																																																																																																																																																																																															
rinsing - heating																																																																																																																																																																																															
rinsing - dos. rinse aid + heat																																																																																																																																																																																															
rinsing - heating																																																																																																																																																																																															
rinsing - dos. rinse aid + heat																																																																																																																																																																																															
rinsing - heating																																																																																																																																																																																															
draining - regenerating																																																																																																																																																																																															
drying - regenerating																																																																																																																																																																																															
drying - regenerating - filling																																																																																																																																																																																															
drying - regenerating																																																																																																																																																																																															
drying - regenerating - filling																																																																																																																																																																																															
drying - without Fan																																																																																																																																																																																															
drying - without Fan																																																																																																																																																																																															
drying - with Fan																																																																																																																																																																																															
drying - draining																																																																																																																																																																																															
End																																																																																																																																																																																															

- d: drain out depends on soil level
- f: water fill if (d) water was drained out
- h: heating up to 40° C till 70° C depends on soil level
- r: rinsing time 0 min. till 12 min. depends on soil level
- i: 2nd intermediate rinse depends on soil level

### Function diagram Point permanent wash

(Ä10: 4619 724 44201/10)  
23.10.2006  
4619 724 44201-1

## Text/Legend

### **Test procedure for SERVICE-TEST-PROGRAM Point dishwashers Integrated Board - Full door.**

Switch on the appliance.

1. If there is a defective component indicated, open up the control board (CB).
2. Check the component.  
Unplug the indicated component from the control board (CB) and check it by using an ohmmeter.  
If the resistance is not correct, check the cables to the component and check the component itself.
3. Visually check the control board (CB).
4. At the end of the repair start the appliance and delete the failure (press in the start button for more the 1.5 sec). After this, start the test program again to see that the failure is solved.

More details: see following pages.

### **Attention:**

**Danger** of short circuit. Short circuits on components can damage the control board (CB).

If electronic boards are wet, do not switch the appliance on.

To check the appliance, plug in the appliance.

Failures, which occurred during the program will be stored and indicated by flashing the start LED.

The failure will be indicated and can be related to the failure table.

To erase the failures, you must push the start button longer than 1.5 seconds.

The failures:

F1 NTC break

F9 continuous water inlet

are checked and indicated immediately after start of the program.

Therefore these failures have to be solved before starting the test program.

When these failures are not solved, the test program does not run.

The electrical components get their voltage via triac from the control board (CB). To test the voltage the voltmeter must be connected in parallel to the component (the component must be connected). If the component is disconnected, then the output voltage from the control board (CB) is reduced.

**After starting a program this program is locked. That means neither by unplugging/switching off the appliance nor by setting to another program, the first set program cannot be changed.**

**Changing of the program is only possible by pushing the start button again for longer than 1.5 sec..**

**Attention:** New service control boards start at first with the service test program. This test program is without back rinsing. **Dangerous for overfilling the appliance, in case the appliance is not empty.** By running the test program or another program a second time, the back rinsing will be carried out as usual.

4619 724 76581-1

## Text/Legend

**Handling of failures**











- F1. NTC break  
Temperature out of the normal value (-3°C till +85°C)  
- Temperature inside higher than +85°C  
- NTC defective  
- Dishwasher is frozen, less than -3°C  
If the temperature is less than -3°C, fill the appliance with a cup of warm water to warm it up before you start it..
- F2. Water Leakage  
- Water is in the drip tray  
Floater (LS6) switches off the WV1 and the electronic switches on the DPM until WI reports that it is empty.
- F3. Heating System Defective  
Indicated after app. 25 minutes (1. check after 5 min., after that follow 2 more checks, before the failure is indicated)  
- Heats too slowly (less than 1.5 °C in 10 min.)  
- Heating (HEW) defective  
- Relays (RE2) on control board (CB) is defective  
- NTC - resistance fluctuation
- F4. Draining Failure  
Drain pump starts and after 4 min. the WI detects that it is "not empty"  
- Drain pump (DPM) defective  
- Siphon closed  
- Control board (CB) defective  
- WI defective. (doesn't switch back anymore)
- F6. Water Tap Closed  
Water valve (WV1) is switched on but flow meter (FM) sends no impulses (less than 10 imp. in 10 sec.) and the water indicator (WI) is off (empty)  
- Water tap closed  
- Water inlet hose blocked  
- Water inlet valve (WV1) defective
- F7. Flow Meter Failure  
Water inlet valve (WV1) is switched on and the water indicator (WI) is on (full).  
- Flow meter (FM) sends too few impulses (less than 10 imp. in 10 sec.)  
- Water tap closed during water inlet  
- Water inlet hose blocked  
- Water inlet valve (WV1) defective  
- Flow meter (FM) defective

## Text/Legend

- F8. Water Level Failure.  
Failures are supervised over the whole program.  
Spray pump works, the WI switches more than 20 times in 2 minutes back.  
- WI defect? Should switch on after approx. 1 Ltr  
- Sieve blocked  
- Water strongly foams  
- Pot has over turned and has filled with spray water  
- No stable spray pump (SPM) pressure.
- F9. Continuous Water Inlet  
Water inlet valve (WV1) is switched off, water indicator (WI) on, flow meter (FM) sends impulses (more than 10 imp. in 10 sec.)  
- Water inlet valve (WV1) mechanically not closed  
- Triac (CB) permanently switched on. (short circuit)  
Reaction: interval 30 sec. drain pump on / 20 sec. drain pump off in interval
- FA. WI Failure  
WI does not switch on during water inlet.  
Failure also, if LS6 switches off during water inlet in case of leakage.
- FE. EPROM Failure  
After the start of the test programme the EPROM is immediately checked for errors and an error is displayed if any are found.

## Text/Legend

### Failure Display POINT- Integrated Controls

Alarm / Failure	Failure code
F1 NTC-Failure	 1 x flash 1s Pause 1 x flash.....
F2 Water Leakage Failure	START  2 x flash 1s Pause 2 x flash.....
F3 Failure in Heating System	 3 x flashes 1s Pause 3 x flashes.....
F4 Draining Failure	 4 x flashes 1s Pause 4 x flashes.....
F6 Water Tap Closed	 6 x flashes 1s Pause 6 x flashes.....
F7 Flow Meter Failure	 7 x flashes 1s Pause 7 x flashes.....
F8 Water Level Failure	 8 x flashes 1s Pause 8 x flashes.....
F9 Continuous Waterinlet	START  9 x flashes 1s Pause 9 x flashes.....
FA WI-Failure	START  11 x flashes 1s Pause 11 x flashes.....
FE EPROM Failure	START  15 x flashes 1s Pause 13 x flashes.....

 LED flashing

⇒ Note: Buzzer will continuously sound during a failure indication.

## Text/Legend

**Attention:**

If you can't start the test program (Start button doesn't flash), normally there is one of the following failures detected: F1 or F9.

When these failures are not solved before, the test program will not run. After solving the failure you must "sign" (erase) the failure.

If a failure is indicated directly after you switch on the appliance. Then fix the mistake, erase failure and start the test program again (see following start procedure).

### **Start procedure**

#### Start the test program if there is no failure indicated

1. Open the door
2. Turn ON appliance at the Mains.
3. Select program position 1.
4. Turn OFF appliance at the Mains.
5. Push start button and hold it.
6. Turn On appliance still holding the start button.
7. Release the start button when the Start-LED flashes.
8. Start the test program by pushing the start button again.
9. Failure indication.
10. Repair the failure.
11. Solve the failure by pushing the start button for longer than 1.5 sec.
12. Start the test program again, to see, if the failure really is solved.

## Text/Legend

