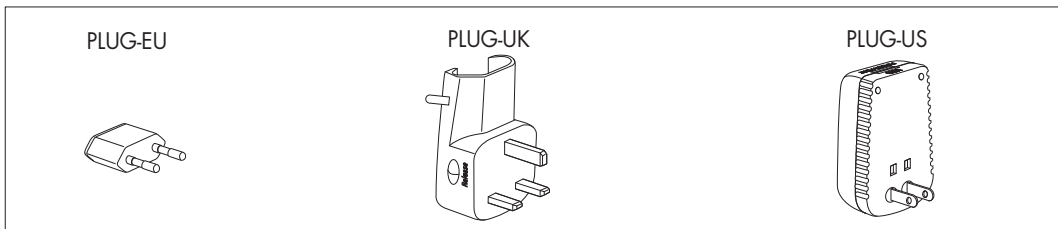
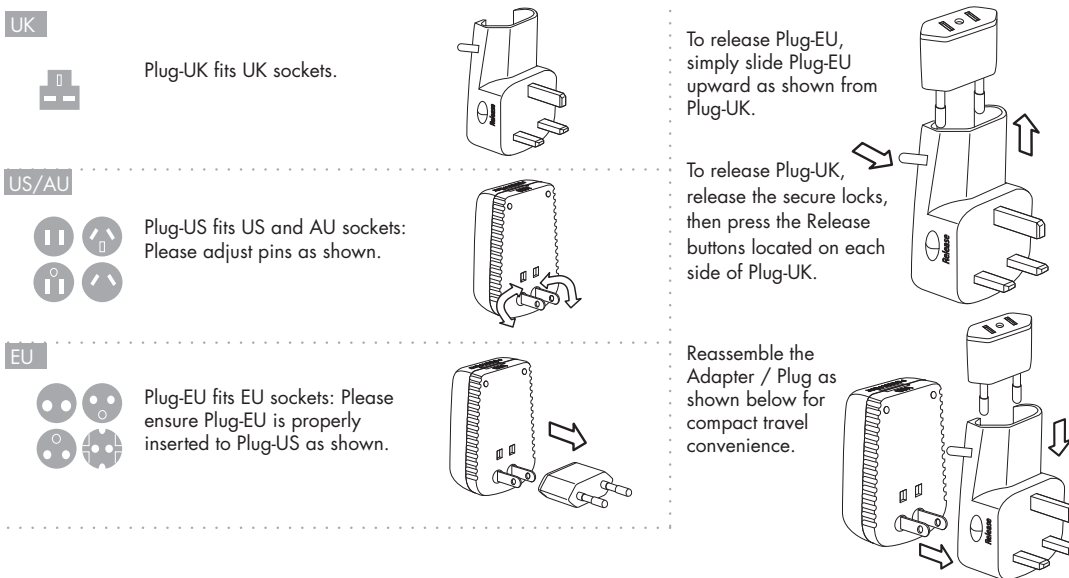


Universal Travel Step Down (220V to 110V) Power Converter/Adapter with USB Charger



Notice: No separate adapter is required when your mobile electronic's power plug is the same as the wall outlet. (Ensure that your mobile electronics adapter is rated to handle both 100~125 and 220~250 Volt standards)

Socket conversions and basic operating instructions:



Step Down Power Converter

The Universal Travel Step Down (220V to 110V) Power Converter/Adapter with USB Charger's built-in circuit will constantly detect the incoming power voltage, step down power conversion will only be conducted if 200V incoming power is detected (see fig. 1 below). If the incoming power voltage is detected to be 110V, the built-in circuit will automatically bypass the power conversion circuit (see fig. 2 below), ensuring that the Universal Travel Step Down (220V to 110V) Power Converter/Adapter with USB Charger's outlet will always be supplying 110V.



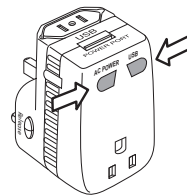
CAUTION The Universal Travel Step Down (220V to 110V) Power Converter/Adapter with USB Charger is protected by a thermal detection circuit, when using with high power electronic devices i.e.. Hair dryer, the Universal Travel Step Down (220V to 110V) Power Converter/Adapter with USB Charger might get hot after extensive usage. The Universal Travel Step Down (220V to 110V) Power Converter/Adapter with USB Charger's thermal detection circuit will shut off the Universal Travel Step Down (220V to 110V) Power Converter/Adapter with USB Charger when temperature reaches a certain level to protect your electronic device and the Universal Travel Step Down (220V to 110V) Power Converter/Adapter with USB Charger.

The Universal Travel Step Down (220V to 110V) Power Converter/Adapter with USB Charger would operate again once the temperature drops to a safe operating temperature. Please turn off your device and let the Universal Travel Step Down (220V to 110V) Power Converter/Adapter with USB Charger cool down for approx. 10 minute if this happens.

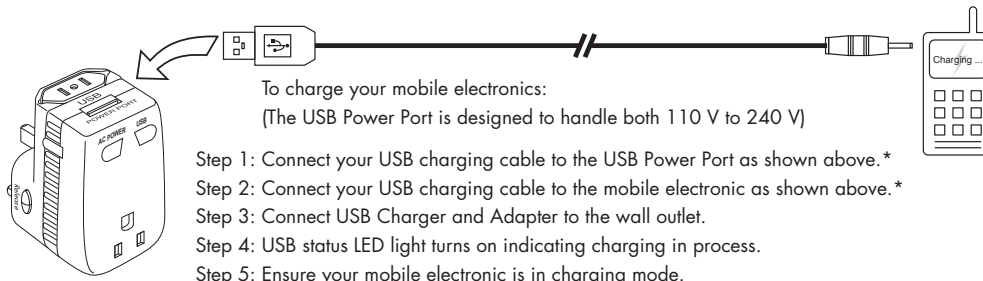
AC POWER and USB POWER Status LED

AC POWER and USB POWER Status indicators:

- AC POWER LED light is ON indicating AC POWER is active and power is being transmitted through the AC POWER port.
- USB POWER LED light is ON indicating USB POWER is active and power is being transmitted through the USB POWER port.



USB Power Port



To charge your mobile electronics:
(The USB Power Port is designed to handle both 110 V to 240 V)

- Step 1: Connect your USB charging cable to the USB Power Port as shown above. *
- Step 2: Connect your USB charging cable to the mobile electronic as shown above. *
- Step 3: Connect USB Charger and Adapter to the wall outlet.
- Step 4: USB status LED light turns on indicating charging in process.
- Step 5: Ensure your mobile electronic is in charging mode.

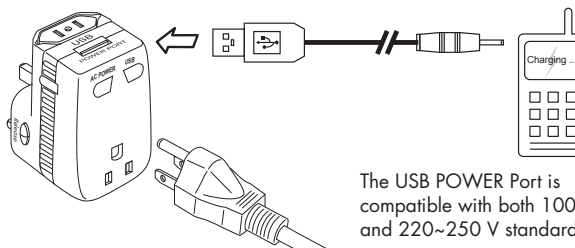
* USB charging cable is not included, make sure compatible USB charging cable is being used.

Power up your gear through the AC Power port and USB Power port simultaneously

The Worldwide Adapter and USB Charger allow you to power up / charge up your gear at the same time.

The AC POWER and USB Status LED lights indicate ON/OFF status respectively.

Please connect your devices as shown.



The USB POWER Port is compatible with both 100~125V and 220~250 V standards.

WORLDWIDE COVERAGE GUIDE (NOT ALL COUNTRIES ARE LISTED)

Outlet Style	Country	Outlet Style	Country	Outlet Style	Country	Outlet Style
US UK EU AU 	EUROPE		PERU	US, EU	SAUDI ARABIA	US, UK, EU
	ALBANIA	EU	SURINAME	EU	SENEGAL	UK, EU
	ARMENIA	EU	URUGUAY	AU	SIERRA LEONE	UK, EU
	AUSTRIA	UK, EU	VENEZUELA	US	SOMALIA	UK
	BELGIUM	EU, US	CARIBBEAN		SOUTH AFRICA	UK
	BOSNIA	EU, US	ANTIGUA	US, UK	SUDAN	UK, EU
	BULGARIA	EU	ARUBA	US	TUNISIA	UK, EU
	CROATIA	EU	BAHAMAS	US, UK, EU	TURKEY	EU
	CZECH REPUBLIC	EU	BERMUDA	US, UK, EU	UNITED ARAB EMIRATES	UK, EU
	DENMARK	EU	BRITISH VIRGIN ISLANDS	US, UK	YEMEN	UK, EU
	FINLAND	EU, US	DOMINICAN REPUBLIC	US, UK, EU	ZAMBIA	UK, EU
	FRANCE	EU, AU, US	HAITI	US	ZIMBABWE	UK, EU
	GERMANY	EU	JAMAICA	US, UK, EU	ASIA / PACIFIC	
	GIBRALTAR	UK, EU	LEEWARD ISLANDS	EU	AFGHANISTAN	EU
	GREECE	EU	PUERTO RICO	US	AMERICAN SAMOA	AU
	HUNGARY	EU	VIRGIN ISLANDS	UK	AUSTRALIA	AU
	ICELAND	EU	NORTH AMERICA CANADA		BALI	UK
	IRELAND	EU, US, UK	CANADA	US, EU	BHUTAN	EU, EU
ITALY	EU	UNITED STATES	US	BURMA	AU, EU	
LIECHTENSTEIN	UK	AFRICA / MIDDLE EAST		CHINA	AU, US, UK, EU	
MALTA	UK	ABU DHABI	UK, EU	COOK ISLAND	AU	
MONACO	EU	ALGERIA	US, EU	FIJI	AU, US, UK, EU	
MACEDONIA	EU	ANGOLA	EU	FRENCH POLYNESIA	EU, US	
NETHERLANDS	EU	BANGLADESH	EU	GUAM	US	
NORWAY	EU	BENIN	EU	HONG KONG	UK, EU	
POLAND	EU	BOTSWANA	UK	INDIA	UK, EU	
PORTUGAL	EU	BRUNEI	UK, EU	INDONESIA	US, UK, EU	
ROMANIA	EU	CAMEROON	EU	JAPAN	US	
RUSSIA	EU, US	CHAD REPUBLIC	EU	MALAYSIA	UK, EU	
SERBIA AND MONTENEGRO	EU, US	CONGO	EU	MALDIVES	UK, EU	
SLOVAKIA	EU	EGYPT	UK, EU	MYANMAR	UK, EU	
SLOVENIA	EU	ETHIOPIA	EU	NEPAL	AU, UK, EU	
SPAIN	EU, US	ERITREA	EU	NEW CALEDONIA	AU, EU	
SWEDEN	EU	GAMBIA	UK	NEW ZEALAND	AU, EU	
SWITZERLAND	EU	IRAN	UK, EU	NORFOLK ISLANDS	AU	
UNITED KINGDOM	UK, EU	IRAQ	UK	NORTH KOREA	US, EU	
CENTRAL / SOUTH AMERICA		ISRAEL	AU, EU	PALAU	AU, US, EU	
ARGENTINA	AU, EU	JORDAN	UK, EU	PAPUA NEW GUINEA	AU, US, EU	
BELIZE	US, UK	KENYA	UK, EU	PHILIPPINE	AU, US, EU	
BRAZIL	US, EU	KUWAIT	UK, EU	SINGAPORE	UK, EU	
COLOMBIA	US, EU	LI	EU	SOUTH KOREA	US, EU	
COSTA RICA	US	MOROCCO	US, EU	SRI LANKA	UK, EU	
EL SALVADOR	US	NIGERIA	UK, EU	TAHITI	US, EU	
FALKLAND ISLANDS	UK	OMAN	UK	TAIWAN	AU, US, EU	
FALKLAND ISLANDS	UK	PAKISTAN	US, EU	THAILAND	US, UK, EU	
GUADALOUPE	EU	QATAR	UK, EU	TIBET	AU, EU	
GUATEMALA	US	RWANDA	EU	TONGA	AU	
HONDURAS	US			VIETNAM	US, EU	
MARTINIQUE	EU			WESTERN SAMOA	AU, US, EU	
MEXICO	US, EU					
NICARAGUA	US					

WARNINGS

	Do not expose to liquid or moisture or humidity.		Do not handle with wet hands.		Only use as instructed by the instructions manual.
	Do not use with high power products such as refrigerator, electric heater etc...		Unplug immediately should there be any abnormalities such as smoke, smell.		Keep away from reach of children.
	Do not attempt to disassemble.		Do not use where condition is instable, such as top of a moving object, shaky table etc...		Do not leave Adapter / Plug in the power socket after use.
	Do not use with electric devices demand power over 1875W.		Do not put metal fragment (eg. Such as wire) inside.		For indoor use only.