

HOME ENVIRONMENT CLEANING SYSTEM

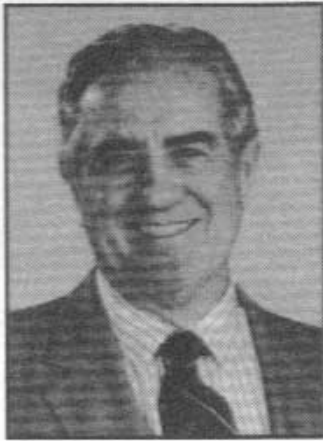
AF Owner's Manual

 **Thermax**[®]

For a Healthier Indoor Environment

Table of Contents

Identifying Features	2
Important Safety Instructions	3
Operating Instructions:	
Vacuuming With Aqua Filtration System	5
Picking Up Liquids/Wet Vacuuming	7
Hot Water Extraction (Steam Cleaning)	8
Carpet Maintenance Program	11
Use As Air Wash or Inhalation/Deodorizing System	12
Use As Inhalation/Aromatic System	12
Motorized Dry Vacuum Head	13
How to Change Belt	13
Secondary Filtration System, Instruction and Information	13
Use of Black Urethane Filter	14
When to Replace White AF Filter	14
Serial Number Identification Plate	14
Thermax Cleaning Solutions	15
Trouble Shooting Tips	16
Safety Information (French)	18
Thermax AF Warranty	Back Cover



Dear Thermax Owner:

Congratulations on the purchase of your new Thermax AF Home Environment Cleaning System!

I started in the rug-cleaning business when I was 15 and spent the majority of my life selling and designing vacuum cleaners for many top-name companies. In 1971, I developed the world's first UL approved carpet steam cleaner for the U.S. market, and have since produced over 500,000 units sold worldwide. You have seen many of our private labeled machines for rent in grocery and hardware stores across the country. Recently, we have adopted our own brand name, Thermax, which is rapidly becoming a household name, synonymous with the industry. Through our experience as the pioneers of the do-it-yourself carpet cleaner rentals, along with years of field research and development, we have created what we believe to be the most advanced, complete and versatile home environment cleaning system ever developed. Designed for the rigorous cleaning demands of today's modern household environment, the Thermax AF is the solution to help attain a healthier indoor environment by keeping the carpets, floors and upholstered furniture clean and free of allergens and unhealthy contaminants!

AF's insignia has a three-fold punch! It is defined as 1) Aqua Filter for our patented hydropneumatic (water and air interaction) water filtration system, 2) Allergy Filter for either our standard high-efficiency reusable secondary urethane foam filter or our electrostatically charged 100% efficient disposable allergy filter, and 3) Allergy Free. All this high efficiency leads to a dust-free, allergy-free operation, trapping the contaminants and allergens within the system for easy disposal.

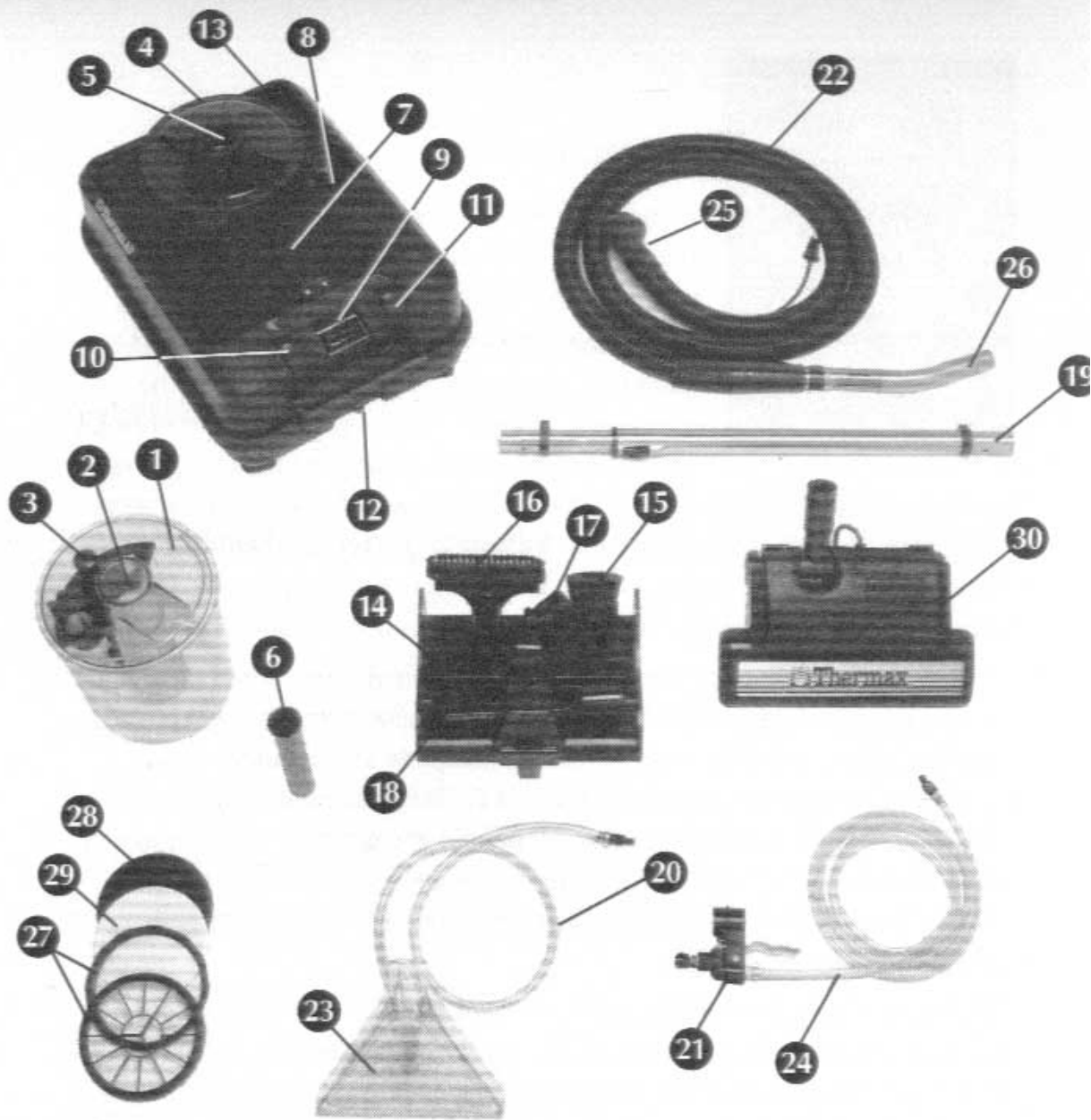
Thank you for joining the ever-growing family of Thermax owners. Here's to many years of use and, most importantly, here's to a healthier household environment for you and your family.

Sincerely,

A handwritten signature in cursive script that reads "Carl Parise". The signature is written in dark ink and is positioned below the word "Sincerely,".

Carl Parise

Identifying Features



- | | | |
|----------------------------------|-----------------------------------|--|
| 1. Aqua Filtration Recovery Tank | 12. Solution Hose Coupling | 23. Aqua Spray and Recovery Head |
| 2. Aqua Filtration Chamber | 13. Retractable Power Cord | 24. Solution Hose (B) |
| 3. Vacuum Outlet Tube | 14. Snap-on Tool Caddy | 25. Aqua Dome Inlet Elbow |
| 4. Aqua Dome | 15. Dusting Brush | 26. E.V.H. Wand End |
| 5. Aqua Dome Inlet | 16. Upholstery Tool | 27. Secondary Filter Holder (2 -Piece) |
| 6. Aqua Filtration Tube | 17. Floor Tool | 28. Urethane Foam Filter |
| 7. Hose Guide Support | 18. Crevice Tool | 29. Electrostatic Allergy Filter |
| 8. Solution Fill Hole | 19. Stainless Steel Sliding Wand | 30. Motorized Dry Vacuum Head |
| 9. E.V.H. Cord Outlet | 20. Solution Hose (A) | |
| 10. Vacuum Power Switch | 21. Aqua Valve Bracket | |
| 11. Spray Power Switch | 22. Electrified Vac Hose (E.V.H.) | |

WHEN USING AN ELECTRICAL APPLIANCE, BASIC PRECAUTIONS SHOULD ALWAYS BE FOLLOWED, INCLUDING THE FOLLOWING; READ ALL INSTRUCTIONS BEFORE USING THIS APPLIANCE. SAVE THESE INSTRUCTIONS!

WARNING

TO REDUCE THE RISK OF FIRE, ELECTRIC SHOCK OR INJURY:

1. Before servicing motorized dry vacuum head unit, disconnect power supply.
2. Do not leave appliance when plugged in. Unplug from outlet when not in use and before servicing.
3. To avoid electric shock, do not use motorized dry vacuum head on wet surfaces.
4. Do not allow this appliance to be used as a toy. Close attention is necessary when used by or near children.
5. Use only as described in this manual. Use only manufacturer's recommended attachments.
6. Do not use with damaged cord or plug. If appliance is not working as it should, has been dropped, damaged, left outdoors, or dropped into water, return it to a service center.
7. Do not pull or carry by cord, use cord as handle, close a door on cord, or pull cord around sharp edges or corners. Do not run appliance over cord. Keep cord away from heated surfaces.
8. Do not handle plug or appliance with wet hands.
9. Do not put any object into openings. Do not use with any opening blocked. Keep free of dust, lint, hair and anything that may reduce air flow.
10. Keep hair, loose clothing, fingers, and all parts of body away from openings and moving parts.
11. Do not pick up anything that is burning or smoking..
12. Turn off all switches before unplugging.
13. Do not use to pick up flammable or combustible liquids such as gasoline, or use in areas where they may be present.
14. The vacuum hose contains electrical wire. Do not use if damaged, cut or punctured. Avoid picking up sharp objects.
15. Always turn off this appliance before connecting or disconnecting either hose or motorized dry vacuum head.

16. Hold plug when unwinding power cord. Do not allow power cord to whip back in when rewinding.
17. This appliance is provided with double insulation. Use only identical replacement parts. See instructions for servicing of double-insulated appliances.
18. Avoid spilling liquids on electrical switch area or canister.
19. Remove all solution from tank before storing canister.
20. Lint/foreign matter in solution tank can clog pump, valves, and spray nozzle which could result in damage to canister components.
21. Plastic components are oil sensitive. Keep away from oil, grease, and other petroleum-based products and cleaning solutions. Use only mild soap to wipe down canister.
22. For proper results, use only those chemicals recommended by manufacturer.
23. Keep canister on floor during use.
24. Store canister in dry, clean place. Do not store where temperatures dip below freezing or above 120 degrees Fahrenheit.
25. THIS APPLIANCE IS FOR NORMAL HOUSEHOLD USE ONLY. ANY INDICATION OF COMMERCIAL USE OR NEGLIGENCE OF THIS APPLIANCE WILL VOID THE WARRANTY.
26. TO PREVENT PLASTIC COMPONENTS FROM WARPING, keep unit from direct sunlight radiating through a car window, sliding glass door, etc.
27. Transport canister containing solution in a level, horizontal position.
28. Canister should be serviced by authorized service centers. Call 775-972-1621 for nearest authorized service center.
29. ALWAYS ATTACH THE ELECTRIFIED VAC HOSE (E.V.H.) AND THE E.V.H. CORD TO THE HOSE GUIDE SUPPORT WHENEVER USING THE E.V.H. WITH THE CANISTER. This relieves strain on the E.V.H. cord, and dome, and also aids in the tracking of the canister.
30. The power cord is attached to a spring-loaded cord reel. As the power cord is pulled out from the canister, you will hear intervals of clicking, which is the sound of the ratchet, and while the ratchet clicks, the cord will remain stationary when released. Between the ratchet cycle when the clicking stops, the cord will retract when released, DO NOT ALLOW THE CORD TO WHIP BACK INTO THE CANISTER.
31. When using this or any other appliance, USE OF COMMON SENSE is an important safeguard.

Service of Double-Insulated Appliances

In a double-insulated appliance, two systems of insulation are provided instead of grounding. No grounding means is provided on a double-insulated appliance, nor should a means for grounding be added to the appliance. Servicing a double-insulated appliance requires extreme care and knowledge of the system, and should be done only by qualified service personnel. Replacement parts for double-insulated appliance must be identical to the parts they replace. This double-insulated appliance is marked with the words "DOUBLE INSULATED" on the inside top case assembly.

Vacuuming with Aqua Filtration System

1. Be sure all switches are off and canister is unplugged.
2. Remove dome from canister twisting dome until it releases from front and rear slots.
3. Remove aqua filtration recovery tank (Photo 1) from canister cylinder compartment and fill with tap water to required level as marked. NOTE: Add one ounce of defoamer to bolster filtration. Add Aqua Blue Aromatic Air Freshener as indicated on its label.
4. Before replacing the aqua recovery tank, be sure that the secondary filter with either the urethane foam or electrostatic allergy filter is in place in the canister cylinder compartment (page 13).
5. Replace aqua filtration recovery tank into canister cylinder compartment and over the filter. NOTE: Located on the bottom of the recovery tank is a locator notch that lines up and locks the tank into place in its ideal position. Place the recovery tank into canister with large center tube (aqua filter chamber) pointing forward, and smaller vacuum outlet tube at the rear of the canister. Now, rotate the recovery tank slowly clockwise until it drops and locks into place, about 45°.
6. Replace dome into front and rear slots of canister, twisting it counter-clockwise until it stops.
7. Drop aqua filtration tube down through dome inlet. (Photo 2) Must be in place or filtration will not work.)
8. Attach electrified vac hose (E.V.H.) to dome inlet (Photo 3).
9. Insert E.V.H. and E.V.H. cord into hose guide support, inserting male plug end of E.V.H. cord into auxiliary outlet (Photo 3).
10. Attach wand end of E.V.H. to sliding wand (Photo 4).

11. Insert wand end into motorized dry vacuum head, connecting dry vacuum head cord end into E.V.H. female receptacle (Photo 5) then into cord clips from top of wand down, leaving excess cord slack looped at the motorized dry vacuum head (Photo 5A).
12. Pull retractable power cord all the way out from rear of canister (about 19 feet) and plug into proper wall outlet.
13. Turn vacuum switch on and commence vacuuming. NOTE: After vacuuming is complete, empty recovery filtration tank into commode, rinse, clean and replace into canister. Your AF is equipped with a floatation shut-off ball. The floatation shut-off ball is for the wet pick-up, hot water extraction function.

Vacuuming Tips:

- A. While vacuuming, periodically check water flow at top of dome. If the water flow is weak or has stopped, turn vacuum switch off. Aqua filtration system has become clogged by excess build-up of carpet debris in aqua filter chamber. Remove aqua filtration recovery tank, empty and clean tank, removing debris from aqua filter chamber. Refill aqua filtration recovery tank, replace aqua dome, filtration tube and E.V.H. to canister and resume vacuuming. NOTE: When vacuuming new carpets be aware of clogging as new carpet has a tendency to shed its loose fibers.
- B. When vacuuming with the aqua filtration system, the aqua filtration tube must be inserted in place for proper function of aqua filtration system (Photo 2).
- C. When aromatic fragrance is desired during vacuuming, add any of the Thermax fragrances or inhalants to the water in the aqua filtration recovery tank for desired effect.
- D. When vacuuming with the optional disposable electrostatic allergy filter (AF), be sure to replace with new AF when filter becomes completely soiled, usually after several vacuumings depending on the content of non-water-soluble ceramic-type soil in the carpet. NOTE: If the water flow from the aqua filter chamber has become weak, it may be time to replace electrostatic allergy filter (see page 13).
- E. During the vacuum cycle, you may have to empty and re-fill the aqua filtration recovery tank several times depending on how much large debris is being recovered. Whenever the water flow out of the aqua filtration chamber becomes weak or sporadic, it is time to empty and change the water. During vacuuming, periodically check the water flow visually by looking through the dome.

Picking Up Liquids/Wet Pick-Up

1. Be sure all switches are **off** and canister is unplugged.
2. Be sure that the secondary filter with urethane foam filter media is in place below the aqua filtration recovery tank.
3. With aqua filtration recovery tank and dome in place, remove aqua filtration tube from dome inlet (Photo 2). (Aqua filtration tube must be removed during wet pick-up or steam cleaning function.)
4. Attach electrified vac hose (E.V.H.) to dome inlet and hose guide support (Photo 3). **NOTE:** Do not insert the male plug end of the E.V.H. cord into the auxiliary outlet.
5. If attached, remove dry vacuum head cord and dry vacuum head from sliding wand and connect the aqua spray and recovery head (Photo 6B) and snap the aqua valve bracket to the wand as shown (Photos 6 & 6A).

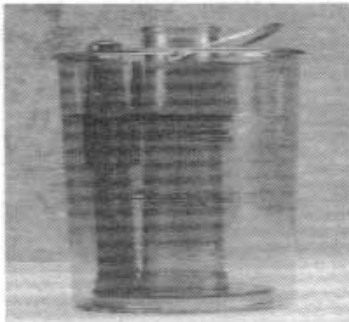


Photo 1



Photo 2

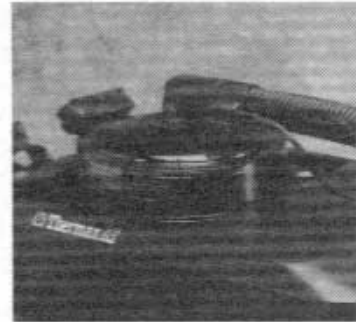


Photo 3

6. Connect solution hose to hose coupling on canister by inserting solution hose male end firmly into coupling (Photo 7). **NOTE:** Whether using the spray feature or not, the solution hose should be connected to keep it out of the way during operation.
7. Plug canister into proper wall outlet, turn vacuum switch only on and commence operation.

Tips for Picking Up Liquids, and Wet Pick-up:

- A. Never use the motorized dry vacuum head for wet pick-up.
- B. When using canister to pick up water or other liquids, be sure aqua filtration tube is removed from aqua dome inlet (Photo 2).
- C. Spray switch should be turned on only when dispensing solution onto the floor or carpet — never when dry vacuuming or using for wet pick-up.
- D. After vacuuming up a sticky or messy substance, flush clean the E.V.H. and wand by vacuuming clean, warm solution through the wand end.
- E. Your AF system employs an automatic flotation ball shut-off system to prevent overflow. When recovering solution during the wet pick-up or hot water extraction functions, be sure that the flotation ball is in its holder when operating the AF.

1. Thoroughly vacuum carpeting or upholstery to remove as much loose, embedded soil as possible.
2. Be sure all switches are **off** and canister is unplugged.
3. Be sure aqua filtration recovery tank is empty and in the canister cylinder compartment.
4. Add recommended amount of defoamer into the aqua filtration recovery tank (Photo 9).
5. Remove aqua filtration tube from dome inlet (Photo 2). **NOTE:** Be sure urethane foam filter media is in secondary filter holder.
6. Attach electrified vac hose (E.V.H.) to aqua dome inlet and hose guide support, but do not plug male end of E.V.H. cord into the auxiliary outlet.

7. Remove dry vacuum head from sliding wand and attach the aqua spray and recovery head (Photo 6B) and snap the aqua valve bracket to the assembled wand as shown (Photos 6 & 6A).

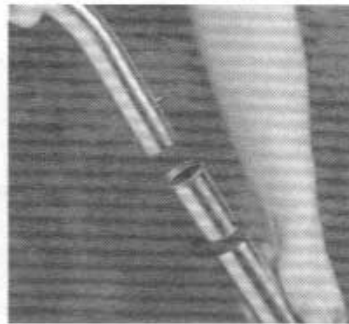


Photo 4

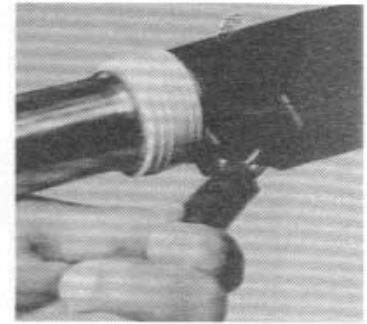


Photo 5

8. Connect solution hose A (page 2 #20) to aqua valve bracket (page 2 #21) by inserting solution hose male end firmly into coupling.
9. Connect solution hose B (page 2 #24) to the canister's coupling (Photo 7) by inserting solution hose male end firmly into coupling.
10. Remove solution fill hole cap from solution fill hole and add pre-mixed hot cleaning solution through the solution fill hole into the solution holding tank (Photo 8), approximately 1.5 gallons. Replace cap. **NOTE:** Pre-mix cleaning solution in container of clean, hot water per instructions on bottle.
11. Plug canister into proper wall outlet, turn spray switch on; spray light indicates that pump is running.
12. Turn vacuum switch on; vacuum light indicates vacuum is running.
13. Commence cleaning.
14. When cleaning is complete, turn both switches off.
15. Remove unused solution from the solution tank by attaching the crevice tool to the E.V.H. end and inserting it through the solution fill hole (Photo 11).
16. Turn the vacuum switch on. **NOTE:** Be sure recovery tank is empty before extracting the unused or remaining solution.

Hot Water Extraction (Steam Cleaning)

17. With vacuum running and E.V.H. with crevice tool down in the corner of the solution tank, slightly tip the canister toward the corner of the solution fill hole as shown (Photo 11). **NOTE:** In addition to removing the remaining solution, this process also flushes out the E.V.H. leaving it clean for storage.
18. When the solution had been removed, turn switch off and unplug canister.
19. Empty, rinse and clean the aqua filtration recovery tank, clean and dry canister. Your canister is now ready for storage.

Hot Water Extraction Cleaning Tips:

- A. When operating canister as a hot-water extraction system, be sure aqua filtration tube is removed from dome inlet (Photo 2) and proper amount of



Photo 5A

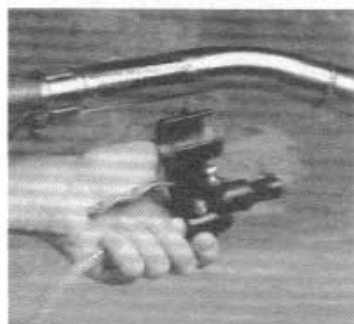


Photo 6



Photo 6A

defoamer is added to aqua filtration recovery tank (Photo 9). **NOTE:** In this function, always use urethane foam filter in secondary filter holder.

- B.
 1. With vacuum and spray switches on, place the aqua filtration and recovery head attached to the wand assembly about three feet in front of you.
 2. Depress solution handle (Photo 10) and check for spray from aqua spray and recovery head (Photo 6B).
 3. With solution handle depressed and aqua spray and recovery head spraying, slowly pull the aqua spray and recovery head back toward you, while applying moderate down pressure on wand and aqua recovery head assembly.
 4. At the end of each backward stroke, release the solution handle and push the wand and aqua spray and recovery head assembly back over the same area several times, using moderate pressure to remove as much solution from the carpet as possible. Use the clear view back of the recovery head as a visual indicator to let you know when the carpet is clean and when as much solution as possible has been removed from the carpet.
 5. Move on to the next section of carpet and repeat steps 1 through 4 until cleaning is complete.

C. Generally, a back and forth scrubbing action, cleaning small sections of carpet at a time, is the best method of hot water extraction. The proper amount of solution to spray into the carpet depends upon the degree to which the carpet is soiled. The more soiled the carpet, the more solution and scrubbing action is required, even to the point of going over the area being cleaned several times. It is recommended that a carpet be deep cleaned at least twice a year, and much more frequently in heavy traffic areas. Always clean your carpet before it becomes noticeably soiled. See Carpet Maintenance Program on below.

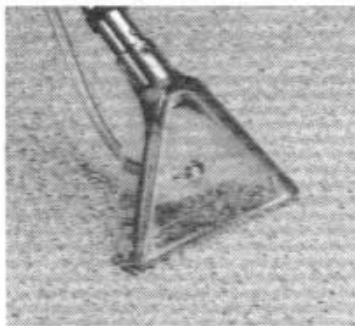


Photo 6B

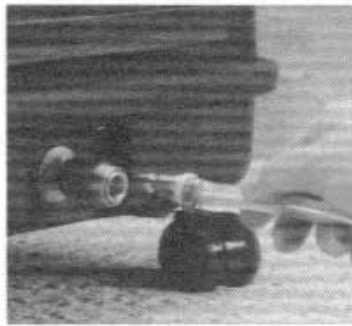


Photo 7

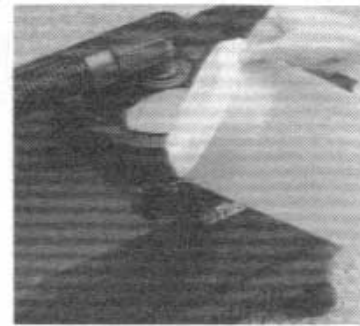


Photo 8



Photo 9

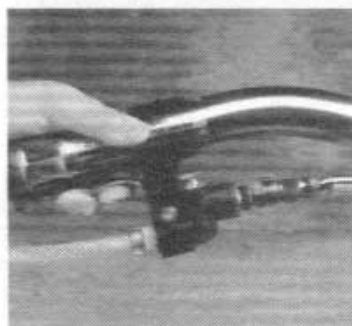


Photo 10

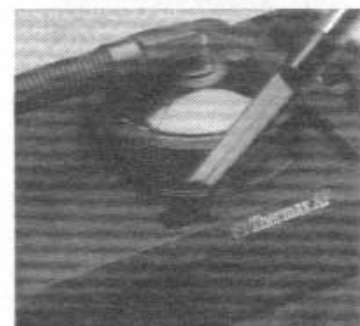


Photo 11

IMPORTANT: It is important to empty the aqua filtration recovery tank each time before re-filling the solution tank. To prevent overflow, your AF employs an automatic flotation ball shut-off system. Always be sure that the flotation ball is in its holder when operating the AF. Also use defoamer in the recovery tank.

With the extremely high cost of carpet today, it is important to develop and implement a planned carpet maintenance program. This is the best way to prolong carpet life, as well as protect your investment.

For everyday maintenance of your carpets, vacuuming with the Thermax AF is important. However, keep in mind, vacuuming alone will not totally remove all soils and oily substances from the carpet fibers no matter how powerful the vacuum may be. Periodically, depending on the degree of traffic over the carpet, a deep cleaning of the carpet fibers is imperative. This is where hot water extraction (steam cleaning) function of the Thermax AF comes in. Hot water extraction is a flushing action of hot water and cleaning solutions sprayed into the carpet fibers under controlled pressure, releasing soils and emulsifying grease from the carpet fibers. The dirty solution is then extracted out of the carpet and into the recovery tank for disposal. This process is equivalent to washing your carpet or upholstery.

Listed below are a few helpful hints for proper carpet maintenance:

1. Vacuum carpets on a regular basis depending on traffic frequency.
2. Utilize walk-off mats wherever traffic enters a carpeted area from a hard surface area. Keep these mats clean.
3. Schedule hot water extraction of your carpets at least twice a year, and more frequently in high-traffic areas.
4. Always deep clean before carpeting becomes noticeably soiled.

SPECIFICATIONS

Weight	20 lbs
Recovery Tank	6 Quarts
Solution Tank	6 Quarts
Sealed Suction at Motor Using Lab Equipment	94"
C.F.M. (Through 1" Opening)	90 CFM
Retractable Cord Length	19 ft

Did you know that your Thermax AF system is filtering the air around you as you vacuum? Airborne dust particles are a big source of allergy and respiratory related problems. A dust-free environment is a healthier environment.

To Use an Air Wash System

- Fill the aqua filtration recovery tank with clean water to the required water level indicator as marked on tank (Photo 1).
- Add Aqua Blue Aromatic Air Freshener as indicated on its label.
- Be sure that the secondary filter holder with the electrostatic allergy filter is in place.
- Replace dome and insert aqua filtration tube (Photo 2).
- Place canister as close to the center of the room as possible.
- Plug into the proper wall outlet and turn on the vacuum switch only.

The Thermax AF is now washing the air of impurities. Run the canister for approximately ten (10) minutes per room.

To Use as an Inhalation/Aromatic System

- Set the canister up in the air wash system mode .
- After filling the aqua filtration recovery tank with water to the proper level, add a few drops of our eucalyptus w/menthol inhalant for therapeutic inhalation purposes, or a few drops of one of our aromatic fragrances, depending on what purpose you want to accomplish.
- Run the canister until the room has reached the desired level of inhalant or fragrant scent or when air wash process is complete.

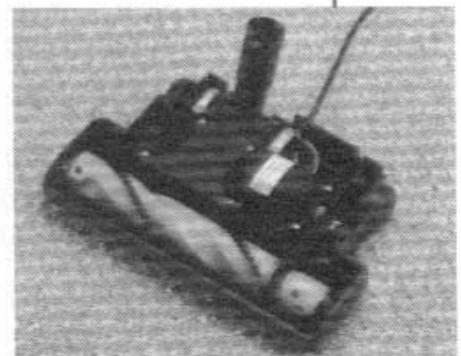
Thermax AF virtually creates an invisible rain storm within the surrounding environment, washing the air and leaving it pure and fresh. Any of the fragrances can be added to the filtration water during vacuuming for the desired effect.

Motorized Dry Vacuum Head

How to Change Belt

1. DISCONNECT ELECTRIC PLUG FROM POWER OUTLET.
2. Flip the unit over exposing the bottom of the Dry Vacuum Head.
3. Remove the single screw.
4. Flip the unit back over and remove the top cover exposing the internal works of the Dry Vacuum Head.
5. Lift the brush roll out of the chassis.
6. Place a new belt over the brush roll end with the belt guide.
7. Holding the brush roll in one hand over the motor pulley shaft, stretch the belt over the pulley shaft.
8. With the belt secured to the pulley and brush roll, pull the brush roll back over the brush roll holder slot first securing the brush roll end opposite the belt into the circular slot. Then pull the belt end of the brush roll over and into the slot matching it with the notch on the end of the brush roll.
9. With the brush roll securely in place, rotate a few times by hand to properly align the belt then replace the top cover and screw.

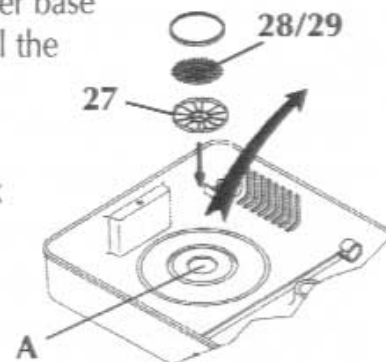
IMPORTANT: Periodically inspect the dry vacuum head air passage way for clogging or obstructions. Remove any obstructions as this affects cleaning efficiency.



Thermax AF Secondary Filtration System

Instructions:

1. Place either the reusable urethane foam filter (#28) or the disposable electrostatic Allergy Filter (#29) in the filter holder base (#27).
2. Place the filter retaining ring over the filter holder base with filter in place. Press down on all sides until the filter retaining ring seats firmly in place.
3. Place the assembled filter base side down into the air intake hole in the recovery filtration tank cylinder compartment (A). Your secondary filtration system is now in place. **NOTE:** The recovery filtration tank sits over the secondary filtration system.



When to Use the Black Urethane Filter

- The black urethane filter is for general overall use and can be used during all phases of operation. It is a washable and reusable filter.
- Always during the hot water extraction function.
- During normal vacuuming.

When Do I Replace the White AF Filter?

- Replace only when filter is visually covered and overloaded with dust particles or if dirt is starting to show through to the bottom side of the AF filter, which should always be clean, white and free of visible dirt.
- Every 4 to 6 weeks depending on local soil conditions and frequency of vacuuming or about a dozen vacuumings.

Since soil type varies from state, city to city, and even home to home, the type of soil contained in your carpets will have an effect on filter replacement frequency.

The AF filter can appear to be completely soiled and still remain 100% effective in filter and airflow efficiency. Therefore, as a general rule, we recommend usage for at least 4 weeks between replacement.

The "dirt" you see on the surface of the AF filter represents millions of non-wettable and microscopic sized particulates that would normally escape undetected into the surrounding environment with any other standard type vacuum.

- During hot water extraction when urethane foam filter is not available.

Serial Number Identification Plate

If the Serial Number Identification Plate on this unit has been removed or tampered with prior to you purchasing it, your factory warranty may be invalid and future service may be unavailable for this unit. Please check to see that the original Serial

Number Identification Plate is intact (Figure 24). If the Serial Number is missing or defaced or does not look like the one in figure 25, please call us at 775-972-1621. We DO NOT recommend that you purchase a Thermax if the Serial Number has been removed or defaced as this is our only means of identification.

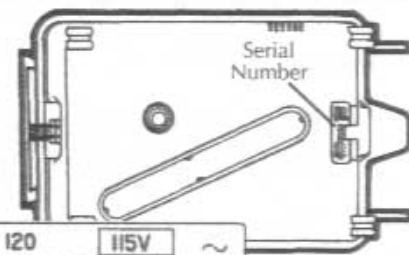


Fig. 25

Fig. 24

Nearly thirty years of extensive field use and refinement have proven our safe and effective cleaning solution formulas. Thermax has a product for just about every carpet cleaning application. Formulated specifically to be used in conjunction with Thermax carpet cleaning systems the products and their application are further defined below.

***THERMA GOLD or THERMAX 9-IN-1**

THERMA GOLD, or THERMAX 9-IN-1, combine the most advanced carpet cleaning technology into one hyper concentrated liquid. They will pre-treat, clean, deodorize, preserve and protect your carpet and upholstery all in one easy to use liquid formula.

***DEFOAMER**

DEFOAMER is used in the dirty solution recovery tank to control potentially damaging foam build-up within the tank. Every carpet being cleaned contains foreign matter within its fibers. Often times, this foreign matter has a tendency to excessively foam when extracted into the recovery tank of the cleaning system. Using DEFOAMER while cleaning minimizes the potential for the foam to overflow into the vacuum motor.

***AQUA BLUE**

AQUA BLUE is a concentrated blend of proprietary elements that therapeutically clean and freshen your indoor environment when used as directed. Just add the required amount into the water of the recovery/filtration tank before and during vacuuming to achieve the desired result. Your home will permeate with a fresh, clean, healthy aroma!

CONDITION AND CAUSE

CORRECTION

VAC MOTOR WON'T RUN:

1. Canister not plugged into outlet
2. Defective vacuum switch
3. Loose terminal connections
4. Defective vac motor

VAC MOTOR WON'T RUN:

1. Plug canister into working outlet
2. *Replace vacuum switch
3. *Check ALL terminal connections
4. *Replace vac motor

PUMP WON'T RUN:

1. Canister not plugged into outlet
2. Defective pump switch
3. Loose terminal connections

PUMP WON'T RUN:

1. Plug canister into working outlet
2. *Replace pump switch
3. *Check ALL terminal connections

PUMP RUNS, BUT DOES NOT SPRAY:

1. Low on solution
2. Obstruction in spray nozzle
3. Clogged solution tank filter
4. Clogged quick disconnect

PUMP RUNS, BUT DOES NOT SPRAY:

1. Refill solution tank
2. Use end of paper clip to clean
3. *Remove lint obstructing filter (filter is inside solution tank)
4. *Replace quick disconnect

LOSS OF VACUUM:

1. Clogged wand or vac hose
2. Clogged motorized dry vacuum head neck
3. Dome improperly seated
4. Damaged aqua dome gasket
5. Damaged gasket on recovery tank
6. Clogged foam (black) secondary filter
7. Clogged disposable electrostatic AF filter (white)
8. Clogged aqua filter chamber & aqua filtration tube

LOSS OF VACUUM:

1. Remove clog by hooking vacuum hose inlet elbow to exhaust outlet located under canister, turn vac on to blow clog out
2. Remove wand and clean out neck
3. Twist dome properly into slots, and test for proper seal
4. Replace with new gasket
5. Replace with new gasket
6. Rinse and replace foam secondary filter
7. Replace with new filter
8. Empty and clean aqua filtration recovery tank

Trouble Shooting Tips

CONDITION AND CAUSE	CORRECTION
WAND WON'T SLIDE:	WAND WON'T SLIDE:
1. Dirt and lint stuck in joint	1. Spray lubricant in joint
AQUA FILTRATION NOT FUNCTIONING PROPERLY:	AQUA FILTRATION NOT FUNCTIONING PROPERLY:
1. No aqua filtration tube in dome. See photo 2	1. Place aqua filtration tube in dome. See photo 2
2. Aqua filter chamber and aqua filtration tube clogged with excess debris	2. Empty tank, remove debris and refill with clean water
MOTORIZED DRY VACUUM HEAD WON'T PICK UP PROPERLY:	MOTORIZED DRY VACUUM HEAD WON'T PICK UP PROPERLY:
1. Worn belt	1. Replace belt and clean brush roll
2. Worn brush roll	2. Replace with new brush roll
3. Clogged air passageway	3. Remove wand and clean out neck
4. Brush roll slipping or not turning	4. Replace belt and clean lint from brush roll. See page 13
5. Clogged reusable/disposable secondary filter	5. If white disposable filter is entirely covered with dirt, replace it. If using black urethane filter, rinse, clean and reuse
MOTORIZED DRY VACUUM HEAD MOTOR NOT RUNNING:	MOTORIZED DRY VACUUM HEAD MOTOR NOT RUNNING:
1. Vac switch off	1. Turn vac switch on
2. Improper cord connections	2. Make sure both cord ends are plugged in. Photos 3 and 5
3. Defective dry vacuum head motor	3. *Replace motor
4. Electrified vac hose not properly hooked up	4. Check E.V.H. cord hookup at powerhead and canister ends
AQUA VALVE LEAKING:	AQUA VALVE LEAKING:
1. Loose fittings	1. Tighten fittings on both ends
AQUA VALVE HANDLE STICKING:	AQUA VALVE HANDLE STICKING:
1. Sticking valve actuating pin under valve handle	1. Spray lubricant into pin joint

**We recommend that this work be done by a qualified service center, not by consumer.*

Limited Warranty

Manufacturer will replace or repair, at its option, the AF system, if found to be defective in material or workmanship, for a period of (2) years from the date of purchase. This Limited Warranty is only extended to the original purchaser, and the system must be used in accordance with the Operations Manual.

Belts and disposable filters are NOT covered by this limited warranty. Customer will be responsible for all shipping and handling charges in getting parts and/or machine to a Thermax Authorized Service Center. Thermax will assume responsibility for return postage only if defect was found to be covered by this Limited Warranty.

Manufacturer's liability under this warranty is limited to the repair or replacements of parts provided in this Limited Warranty and is in Lieu of all other remedies, including incidental and consequential damages. THERE ARE NO OTHER WARRANTIES GIVEN BY THE MANUFACTURER, AND THE MANUFACTURER WILL ONLY HONOR THE WARRANTY AS DESCRIBED HEREIN.

This warranty gives you specific legal rights, and you may also have other rights which vary from state to state.

IMPORTANT: This Limited Warranty will be null and void if:

1. The Thermax was not purchased from an authorized Thermax Distributor.
2. Original factory serial number has been defaced, removed or changed.
3. Cleaning solutions other than those approved by Thermax are used.
4. If machine is used for other than household use.

Name of Distributor:

Distributor Phone Number:

Date of Purchase:

Serial Number:

Please Note: Retain this owner's manual along with your Owners Information Sheet. Proof of purchase must accompany all warranty claims.

To Contact the Factory:

Thermax AF1 & AF2 World Headquarters
3315 E. Texas St.
Bossier City, LA 71111

Phone: 888-764-3700

Fax: 318-741-3702

Website: www.thermaxaf.com

Email: customersupport@thermaxaf.com