

Edge-R-Rite[®]
Edger Model N2
With Traction Kit



**OPERATOR'S MANUAL
MAINTENANCE MANUAL
PARTS LIST**

TURFCO[®]
Edge-R-Rite[®]
**Edger Model N2
With Traction Kit**

Product Number 85303 - USA Domestic Version

Also Includes Information On

Optional Blades and Optional Blade Assemblies

Product Numbers 87104, 87105, 87106, 87107, 87108, 87111

Manual Number 661153



DANGER - IF INCORRECTLY USED THIS MACHINE CAN CAUSE SEVERE INJURY. THOSE WHO USE AND MAINTAIN THIS MACHINE SHOULD BE TRAINED IN ITS PROPER USE, WARNED OF ITS DANGERS, AND SHOULD READ THE ENTIRE MANUAL BEFORE ATTEMPTING TO SET-UP, OPERATE OR SERVICE THE MACHINE.

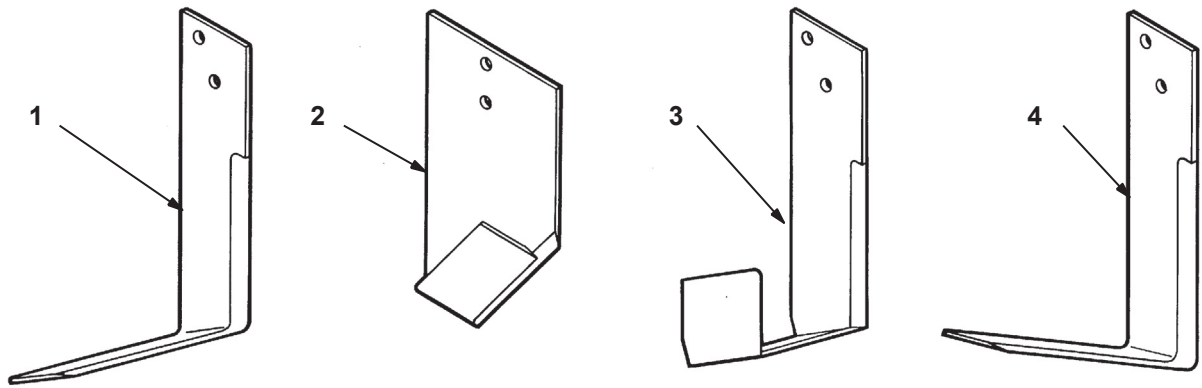
TURFCO MFG. INC.

1655 101st. Avenue NE • Minneapolis, MN 55449-4420 USA

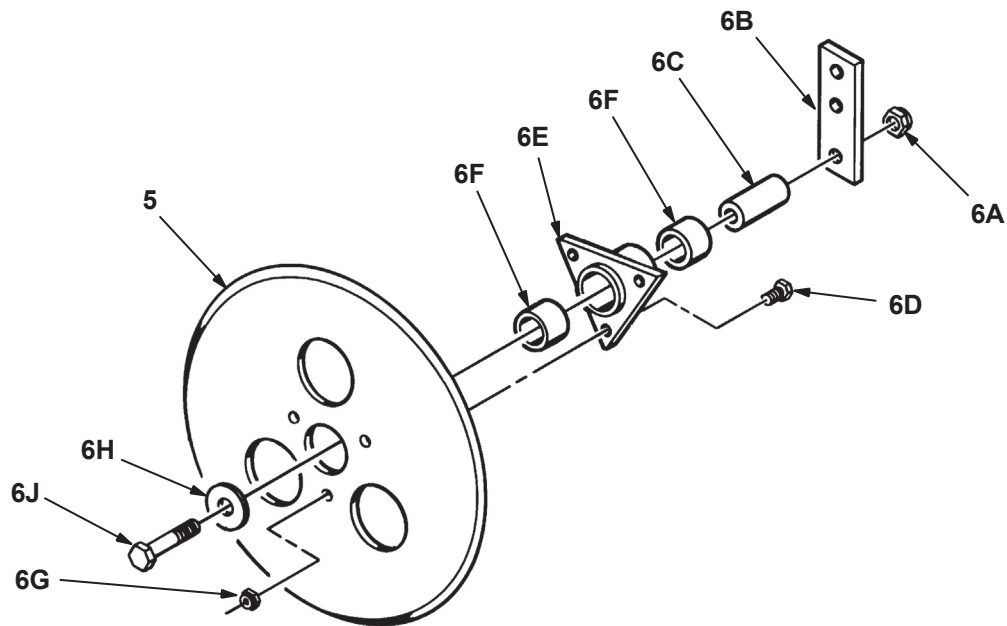
Phone (763) 785-1000 • FAX (763) 785-0556

1997 Turfco Mfg., Inc.

Blades

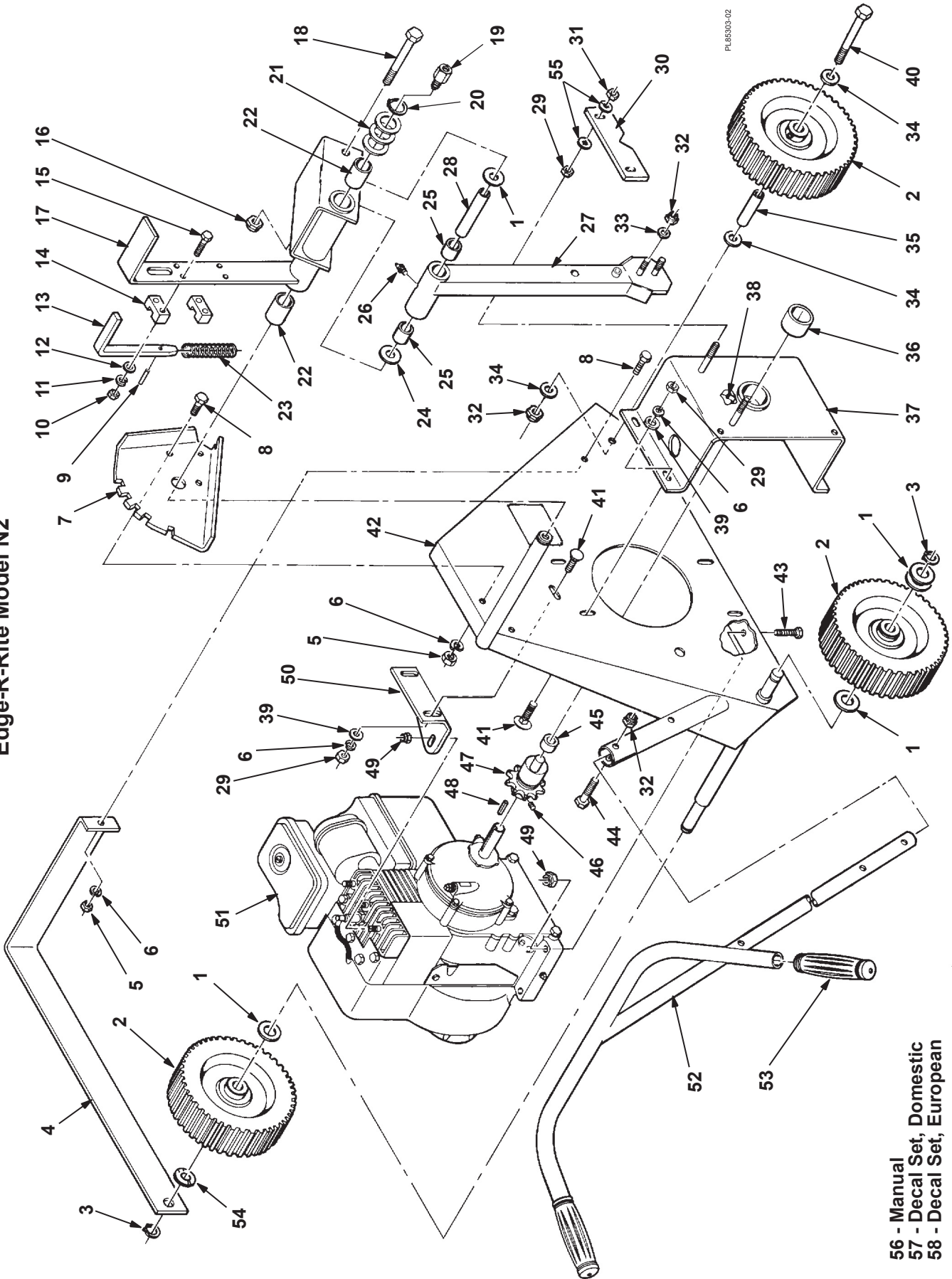


PL85303-01



Item No.	Part No.	Description	Qty.
1	87104	Blade, Right Angle.....	1
2	87105	Blade, V.....	1
3	87106	Blade, Stripper.....	1
4	87111	Blade, Tree Ring.....	1
5	87107	Blade, Circular.....	1
6	87108	Bracket and Hub Assembly, Circular Blade Includes Items 6A thru 6J.....	1
6A	444812	Nut, Hex, 3/8"-24 Flexloc.....	1
6B	655406	Bar, Mounting.....	1
6C	655411	Spacer.....	1
6D	400106	Screw, Hex, 1/4"-20 x 5/8".....	3
6E	655407	Hub, Includes Oilite Bearings.....	1
6F	650780	Bearing, Oilite, AA-839-1.....	2
6G	444830	Nut, Hex, 1/4"-20 Flexloc.....	3
6H	499059	Washer, 25/64" ID x 1-1/4" OD x 3/32" Thick.....	1
6J	400308	Screw, Hex, 3/8"-24 x 2-1/4".....	1

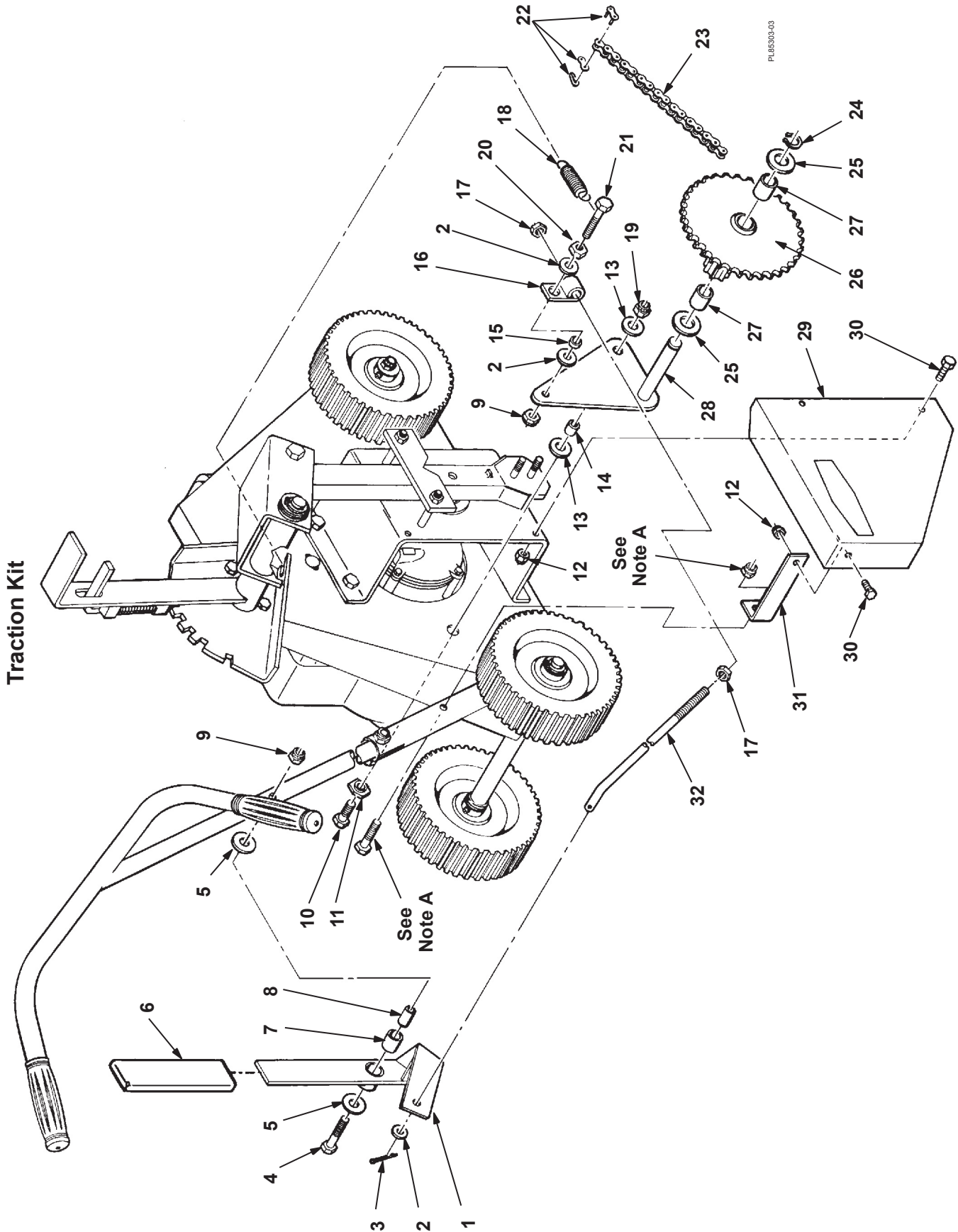
Edge-R-Rite Model N2



- 56 - Manual
- 57 - Decal Set, Domestic
- 58 - Decal Set, European

Edge-R-Rite Model N2

Item No.	Part No.	Description	Qty.	Item No.	Part No.	Description	Qty.
1	499074	Washer, Flat, 49/64" ID x 1-5/16" OD x 3/64" Thick	AR	31	499357	Nut, Hex, 3/8-16 Thin Flexloc.	2
2	655431	Wheel/Tire Assembly	3	32	444812	Nut, Hex, 3/8"-24 Flexloc.	5
3	458013	Ring, Retaining, 3/4"	2	33	499167	Washer, Flat, 25/64" ID x 3/4" OD x 9/64" Thick	2
4	655369	Bumper	1	34	499059	Washer, Flat, 25/64" ID x 1-1/4" OD x 3/32" Thick	3
5	443112	Nut, Hex, 3/8"-24	4	35	655427	Spindle, Wheel	1
6	446142	Washer, Lock, 3/8"	10	36	655567	Bearing, Oilite, AA-1704-4	1
7	655387	Plate, Catch	1	37	655663	Bracket, Support, Includes Items 36 and 38	1
8	400298	Screw, Hex, 3/8"-24 x 1"	4	38	655662	Cover, Oil Hole	1
9	461359	Pin, Spring, 1/8" x 3/4"	1	39	452006	Washer, Flat, 3/8" ID x 7/8" OD x 5/64" Thick	6
10	443104	Nut, Hex, 1/4"-28	4	40	400312	Screw, Hex, 3/8"-24 x 3"	1
11	446128	Washer, Lock, 1/4"	4	41	440118	Bolt, Carriage, 3/8"-16 x 1"	6
12	452002	Washer, Flat, 1/4" ID x 9/16" OD x 3/64" Thick	4	42	655677	Frame	1
13	655394	Trigger	1	43	400194	Screw, Hex, 5/16"-18 x 1-3/4"	2
14	655393	Guide, Trigger	2	44	400306	Screw, Hex, 3/8"-24 x 2"	2
15	400152	Screw, Hex, 1/4"-28 x 1-1/4"	4	45	650574	Bushing, Eccentric	1
16	499035	Nut, 1/2"-20 Thin Flexloc.	1	46	415509	Screw, Set, 1/4"-20 x 1/4"	1
17	655388	Handle, Control, Includes Item 22	1	47	656889	Eccentric	1
18	400458	Screw, Hex, 1/2"-20 x 4-1/2"	1	48	499496	Key, 3/16" Square x 3/4"	1
19	661472	Nozzle, Grease	1	49	444808	Nut, Hex, 5/16"-18 Flexloc.	5
20	458021	Ring, Retaining, 1"	1	50	655671	Bracket, Upper Engine Mount	1
21	499128	Washer, Flat, 1-1/64" ID x 1-3/4" OD x 3/64" Thick	AR	51	659991	Engine, Briggs and Stratton IC, 3.5 HP	1
22	654996	Bearing, Oilite, AA-1325-10	2	52	655418	Handlebar	1
23	651381	Spring, Trigger	1	53	659274	Grip, Handlebar	2
24	452010	Washer, Flat, 1/2" ID x 1-1/4" OD x 5/64" Thick	2	54	499492	Washer, Curved Spring, 3/4" ID x 1-1/8" OD x 1/32" Thick	1
25	650572	Bearing, Oilite, AA-1043-9	2	55	452008	Washer, Flat, 7/16" ID x 1" OD x 5/64" Thick	4
26	471214	Fitting, Grease, 1/4"-28 Straight	1	56	655679	Manual, Operator and Parts List	1
27	654429	Arm Assembly, Includes Items 25, 26, 32 and 33	1	57	655684	Decal Set, Green, Domestic	1
28	650859	Bushing, Cutting Arm	1	AR - As Required			
29	443110	Nut, Hex, 3/8"-16	8				
30	655404	Guide, Cutting Arm	1				



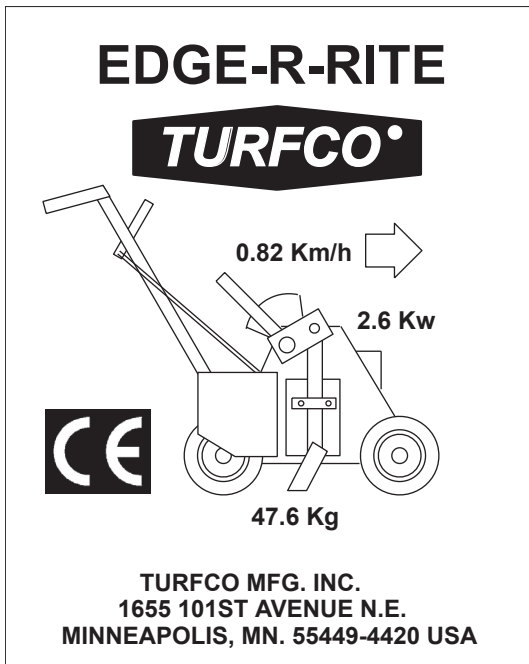
Traction Kit

Item No.	Part No.	Description	Qty.
1	656771	Handle, Control, Includes Item 7	1
2	499021	Washer, Flat, 25/64" ID x 5/8" OD x 1/16" Thick	3
3	460014	Pin, Cotter, 3/32" x 3/4"	1
4	400310	Screw, Hex, 3/8"-24 x 2-1/2"	1
5	452006	Washer, Flat, 3/8" ID x 7/8" OD x 5/64" Thick	2
6	657208	Grip, Handle, Rectangular	1
7	650700	Bearing, Oilite, AA-744-10	1
8	651065	Bushing	1
9	444760	Nut, Hex, 3/8"-24, Thin Flexloc	2
10	400440	Screw, Hex, 1/2"-20 x 1-1/4"	1
11	650467	Bushing, Eccentric	1
12	444830	Nut, Hex, 1/4"-20 Flexloc	3
13	452010	Washer, Flat, 1/2" ID x 1-1/4" OD x 5/64" Thick	2
14	655676	Bushing, Clutch Pivot	1
15	650790	Spacer, Bushing, Pivot Fitting	1
16	650783	Fitting, Pivot, Rod End	1
17	443112	Nut, Hex, 3/8"-24	2

Item No.	Part No.	Description	Qty.
18	650635	Spring	1
19	499035	Nut, Hex, 1/2"-20 Thin Flexloc	1
20	443812	Nut, Hex, 3/8"-24 Thin	1
21	400306	Screw, Hex, 3/8"-24 x 2"	1
22	650604	Link, RC-41 Master	1
23	655399	Chain, RC-41 x 62, Includes Item 22	1
24	458013	Ring, Retaining, 3/4" External	1
25	499074	Washer, Flat, 49/64" ID x 1-5/16" OD x 3/64" Thick	2
26	655668	Sprocket, Drive, Includes Item 27	1
27	650572	Bearing, Oilite, AA-1043-9	2
28	655678	Clutch	1
29	655670	Guard	1
30	400106	Screw, Hex, 1/4"-20 x 5/8"	3
31	655416	Bracket, Guard	1
32	655425	Rod, Control	1

Note A: These items are part of the Edger Assembly. See pages 16 and 17.

Decals



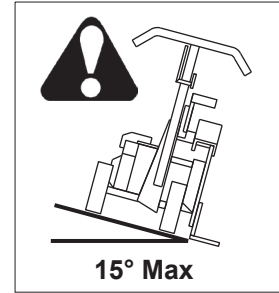
[1]



[2]



[3]



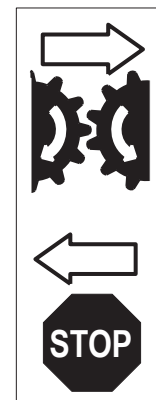
[4]



[5]



[6]



[7]

- [1] - EDGE-R-RITE PRODUCT IDENTIFICATION DECAL
- [2] - READ MANUAL WARNING DECAL
- [3] - "HOT" ENGINE WARNING DECAL
- [4] - MAXIMUM ANGLE OF OPERATION DECAL
- [5] - FOOT HAZARD WARNING DECAL
- [6] - CHAIN GUARD HAZARD DECAL
- [7] - OPTIONAL TRACTION KIT CLUTCH LEVER DECAL

PL85303-04



TURFCO MFG. INC.

1655 101st Avenue NE • Minneapolis, MN 55449-4420 USA
Phone (763) 785-1000 • FAX (763) 785-0556

Internet - www.turfc.com

E-Mail - service@turfc.com