

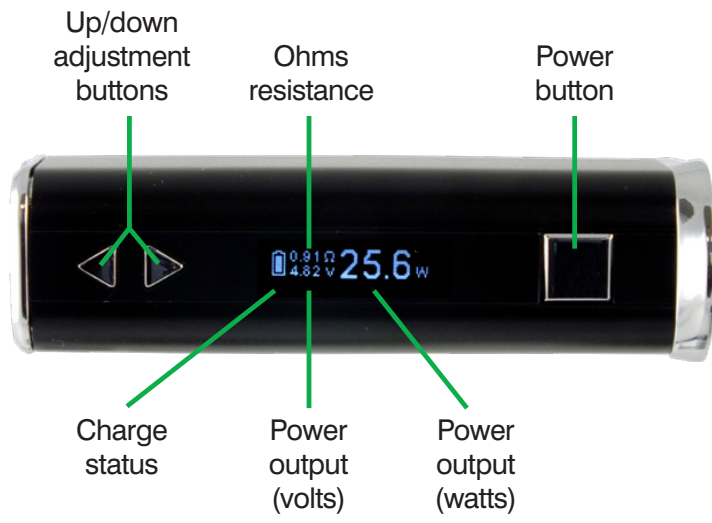
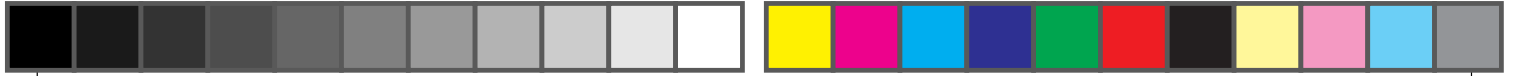




## **Congratulations on purchasing your new arc 4 Electronic Cigarette.**

The arc 4 is the latest product in the hugely successful arc range. Retaining the style, ergonomics and exceptional ease of use that made its predecessors real game changers, the arc 4 has variable wattage providing power of up to 40W, and can be used with atomizer resistances down to 0.4ohm. Included in the kit is the dependable CS Air 2 Tank which provides the user with a 2ml e-liquid capacity and adjustable airflow. The arc 4 combines its functionality and 2200mAh battery in a sleek yet exceptionally compact package.

2





## Using your arc 4

### Power On and Off:

The arc 4 uses a 5-click on/off function. To switch the device on, quickly press the power button 5 times. The screen will illuminate, indicating that the device is powered on. Once the arc 4 is powered on the user can press the button 5 times to switch the device off.



4

## Using your arc 4

### Filling the Tank:

Remove the CS Air 2 Tank from the arc 4 battery by unscrewing at the atomizer base. Invert the tank, unscrew and remove the atomizer base. Refill the tank through one of the apertures either side of the central air tube. Do not place liquid in the central tube. Refit the atomizer base and screw the assembled tank back onto the arc battery.

Maximum refill nozzle diameter: 2.8mm



5



## Using your arc 4

### Vaping:

Simply press the power button as you inhale.

### Adjusting Wattage:

Use the up or down adjustment buttons to increase or decrease the level of wattage respectively. The available wattage range is 1W – 40W.





## Using your arc 4

### Adjusting Airflow:

Using a suitable screwdriver, airflow can be decreased or increased by turning the screw clockwise or anticlockwise respectively.

### Charging the Battery:

Charge the arc 4 via the USB cable when connected to a powered USB port or suitable wall adapter. The indicator on the display will indicate the battery status.

### Replacing the Atomizer Head:

To replace the atomizer head, remove the CS Air 2 Tank from the arc battery by unscrewing at the atomizer base. Invert the tank and unscrew the atomizer base from the tank tube. Unscrew the CS atomizer head from the atomizer base and replace. Reassemble the tank and screw the assembled tank back onto the arc battery.





## Using your arc 4

### Puff & Puff Duration Counter:

To display the puff counter, quickly press the power button 4 times. The puff counter is displayed on the first row, and the puff duration counter is displayed on the second row. To reset the number of puffs recorded to zero, hold the power button and up adjustment button whilst the puff counter display is active. To reset the puff duration to zero, hold the power button and down adjustment button whilst the puff duration counter display is active. Quickly press the button 4 times to return to wattage display.

8







## Using your arc 4

### Stealth Mode:

When powered on, simultaneously hold the power button and the down adjustment button to activate stealth mode. Repeat the process to deactivate stealth mode.



### Key Lock Mode:

When powered on, simultaneously hold the two adjustment buttons for 3 seconds to activate key lock mode. Repeat the process to deactivate key lock mode.



9



## Using your arc 4

### Display Modes:

When powered off, hold both adjustment buttons to turn the display orientation upside down.

### Short Circuit & No Atomizer Protection:

If a short circuit occurs, 'Atomizer Short' will be displayed on the screen and the device will not fire. If no atomizer is detected, 'No Atomizer' will be displayed on the screen. Replace the atomizer head to continue.

### Atomizer Protection:

If the power button is pressed for longer than 10 seconds, the output will automatically cease and the message 'Over 10s' will be displayed.



10



## Using your arc 4

### Low Voltage Protection:

When the battery voltage is below 3.3V, 'Lock' will be displayed on the screen. Recharge the battery to unlock the device and begin vaping again.

### Low Battery Alert:

When the battery reaches lower than 10% capacity, the power symbol on the screen will flash continuously.

### Temperature Alert:

If the temperature of the device exceeds the maximum safe operating temperature, 'Device Too Hot' will be displayed on the screen and the output will shut off automatically. Allow to cool before use.



### Kit Contents

- 1 x arc 4 Body
- 1 x CS Air 2 Tank
- 1 x CS atomizer head (1.5ohm fitted)
- 1 x USB cable
- 1 x User manual



## Specifications

### arc 4 Body

Dimensions: 77mm x 32.5mm x 23mm

Weight: 90g

Wattage Range: 1W – 40W

Voltage Range: 0.5 – 8V

Thread Type: 510 Connector

Battery Capacity: 2200mAh

Atomizer Resistance Compatibility: > 0.4ohm

### CS Air 2 Tank

Dimensions: 16.5mm Diameter x 64mm  
Length (fitted)

Weight: 36g

Tank Capacity: 2ml

Thread Type: 510 Connector

Atomizer Resistance: 1.5ohm

Airflow Type: Bottom - Adjustable

Maximum refill nozzle diameter: 2.8mm

13



**Additional product information**

There are no reported medical side effects with this product. If you believe you experience a side effect, please contact the manufacturer.

**Product storage and battery precautions**

- Store the arc 4 e-cigarette and its accessories away from children whilst not in use.
- Please only use the charging cable provided.
- Please dispose of dead batteries in accordance with your country's appropriate legislation.
- Do not charge the battery in a damp environment, or in temperatures under 0°C or above 45°C.
- Do not use the device in temperatures under -10°C or above 60°C.
- Do not carry batteries in a pocket or bag with other metallic objects.
- Do not attempt to repair a faulty arc 4 battery as these are sealed units with no serviceable parts. Attempted repairs will void the warranty.

14



## Warranty

arc 4 components have a 28-day parts warranty with the exception of atomizer heads which are consumable items and are covered by our 'Dead on Arrival' warranty only. The USB cable supplied has a 12-month warranty. If any parts are found to be faulty within this time please contact our customer service team, whose details are on the back page of this booklet and we will arrange for a replacement. We may require the goods to be returned for further investigation.



Manufactured in China under the authority of  
UK Vapour Brands Limited, Unit 1, Elder Court,  
Lions Drive, Blackburn, Lancashire, BB1 2QS.

Tel: 01254 269380  
[www.tecc.co.uk](http://www.tecc.co.uk)

