

# *Sunbeam*

## **SERVICE MANUAL**

### **PB9800**

### **café series II blender**



**ISSUE:**

**DATE:** 28/05/2012

## SPARE PARTS LIST

*Note: Not all parts are available as spare parts. Please check price list.*

Item	Description	Material	QTY	Supplier's Code	Sunbeam Part No.
<b>Items 1-2</b>	<b>Pusher assembly</b>		<b>1</b>		<b>PB98001</b>
<b>1</b>	PUSHER ROD HANDLE	PP 6524 ( E31765 Basell)	<b>1</b>		
<b>2</b>	PUSHER ROD CORE	PP 6524 ( E31765 Basell)	<b>1</b>		
<b>3</b>	<b>Measuring Cup</b>		<b>1</b>		<b>PB98003</b>
<b>3-4</b>	<b>Jug Lid &amp; Measuring Cup</b>	<b>SAN PN-117 (E56070 Chi Mei)</b>	<b>1</b>		<b>PB98004</b>
		<b>PP6524 overmould TPE</b>	<b>1</b>		
<b>ITEMS 5-15 &amp; 21-25</b>	<b>Blade assembly</b>				<b>PB98002</b>
<b>5</b>	Shim	t1.4 SUS303 double DxOD14	<b>2</b>		
<b>6</b>	Blade	t1.4 SUS420J2 HRC45 +/- 5	<b>1</b>		
<b>7</b>	Aluminum Shim	t0.6 Double DxOD14 AL	<b>1</b>		
<b>8</b>	Bearing Base	Chrome Plating o40(max)xH26 HRC20-25	<b>1</b>		
<b>9</b>	Seal Ring	IE 3846 ID8xOD22x7	<b>1</b>		
<b>10</b>	Aluminum Ring	t0.6 ID13.5xOD21.5 AL	<b>1</b>		
<b>11</b>	O RING	Silicone Rubber SIRA55-60 FDA o29.3xo2.3	<b>1</b>		

12	Upper Shaft	SUS303 o8x45.8 hardness; HRC25	1		
13	Bearing	608-RS 8*22*7	1		
14	Retaining ring	t=1.0mm 弹簧钢 Carbon Spring Steels	1		
15	Bearing Base Plugged	PA6+GF30% BKV03H10 (E245249 Lanxess AG)	1		
<b>Items 16-20</b>	<b>Jug assembly</b>				<b>PB98005</b>
16	Jug	<b>TX1001 FINISH: GLOSS (E118289 Eastnman)</b>	1		
17	<b>JUG HAND COVER</b>	<b>PP 6524 ( E31765 Basell)</b>	1		
18	Magnetic Lid	Silicone Rubber hardness: 55- 60	4		
19	Magnet	5x Dimension 5	4		
20	magnetic cap	ABS PA757 (E56070 Chi mei0	4		
21	sleeve	∅ 10x∅ 8XL12.5 SUS303	1		
22	Upper Gear	o25.5x14 <b>Sintering</b> Stainless Steel(SUS304L)	1		<b>Part of blade assy PB98004</b>
23	Upper Gear Ring	t1.0 SUS304 OD8.6xID4.3mm	1		
24	Spring Washer	M4 SPW SUS	1		
25	Screw	4x10 CHM SUS	1		
26	<b>Small o-ring (Joint Ring Nut)</b>	<b>Silicone Rubber SIR A70 FDA OD34.8(max)x1.5x2.3H</b>	<b>1</b>		<b>PB98007</b>

<b>27</b>	<b>Bearing Base Fixture</b>	<b>PA6+Glass Filled 30% (NF100G3) 掛啤PB9600-LATHE-02 軸承座螺母 ※灰色(SWATCH NCS 8203- R95B)+磨紋 ( TEXTURE YS20002 C)</b>	<b>1</b>		<b>PB98006</b>
<b>27a</b>	<b>Large Friction O-ring</b>	<b>Silicone Rubber SIRA55-60 FDA o29.3xo2.3</b>			<b>PB98008</b>
<b>28</b>	driven cap	PA6+GF30% BKV03H10 (E245249 Lanxess AG)	<b>1</b>		
<b>29</b>	<b>COUPLER GEARS LOWER</b>	<b>PA6+GF30% BKV03H10 overmould PB9800-CAST03 (E245249 Lanxess)</b>	<b>1</b>		<b>PB98009</b>
<b>30</b>	Screw	M5x8 PM-MSP SPW	<b>4</b>		
<b>31</b>	Nut	M4	<b>1</b>		
<b>32</b>	Spring Washer	M4 SPW	<b>1</b>		
<b>33</b>	Ring	PLW 4x8x0.5	<b>5</b>		
<b>34</b>	Motor Fixing Plate	t2.0 Steel	<b>1</b>		
<b>35</b>	Screw	4x10 PM	<b>1</b>		
<b>36</b>	Motor Rubber Spacer	Silicone Rubber Black SIRA70-75 ID10.2xOD20(max)x8H	<b>4</b>		
<b>37</b>	Clamp Shim	t1.5 steel OD18xID5.2mm	<b>4</b>		
<b>38</b>	Screw	5x10 PM	<b>4</b>		

<b>Items 39-47</b>	Motor assembly		1		
<b>39</b>	Motor	U9835-230 ( 230V 50Hz)	1		
<b>40</b>	Nut	M3	2		
<b>41</b>	Spring Washer	M3 SPW SUS	2		
<b>42</b>	PCB assembly (Speed Sensor)		1 set		
	PCB	PCB 71X28X1.6mm UL94V0	1		
	霍尔IC	I/C 137 OH 10, TO-92 ROHS	1		
	霍尔IC	I/C 霍尔 ATS 137 , TO-92 ROHS			
	组合	L/W 3P UL2468 22AWG P+210+3MM ROHS	1		
<b>43</b>	spacer	∅ 9 X ∅3 X L8.3 PBT	2		
<b>44</b>	Ring	PLW 3x6x0.5t SUS	2		
<b>45</b>	Screw	3x30 PM	2		
<b>46</b>	magnetic base	PA+30 % GF	1		
<b>47</b>	Motor Fan	supplier by Motor factory (Johson)			
<b>48</b>	Motor Cover	PP FH44+ V0 Black	1		

49	Screw	9/4x14 PWM	4		
50	<b>Rubber Mat / Dampening Mat</b>	<b>ABS overmould TPE</b>	<b>4</b>		<b>PB98010(set of 4)</b>
51	Enclosure / Main Body	Die Casting AL	1		
52	RING	PLW 3.6x7x0.5t STEEL	3		
53	Badge	ABS PA757 Chrom-plate	1		
Items 54-55	PCB assembly				
54	HALL EFFECT PCB BOX	PP FH44+ V0 ( E140331 Samsung)	2+1		
55	PCB assembly (Jug Safety Sensor)		3set		
	PCB	PCB 17.5*20.5*1.6mm UL94V0	3		
	霍尔IC	I/C 137,OH 10 TO-92 ROHS	3		
	霍尔IC	I/C ATS 137 , TO-92 ROHS			
	组合	L/W 3P UL2468 26AWG P+190+3MM ROHS	3		
56	HALL EFFECT PCB SCREW BASE	PP FH44+ V0 ( E140331 Samsung)	3		
57	Screw	3x6 PM	4		
58	Screw	3x8 BT	15		
59	Screw	4x6 PM -MSP	3		
60	Screw	2.6x6 PA	1		
61	Base Veil Block	PP6524 (E31765 Basell)	4		
62	Screw	4x10 PT 彩鍍	2		
63	Cord Clamp	PP6524 (E31765 Basell)	1		
64	Base	PP6524 (E31765 Basell)	1		
65	Screw	9/4x14 PWA	4		
Items 68,69,71,72	Front Foot assembly				

<b>Items 66,67, 70,72</b>	Back Foot assembly				
<b>66</b>	Foot / Feet - D	Silicone Rubber hardness : 55-60	1		
<b>67</b>	Foot / Feet - B	Silicone Rubber hardness : 55-60	1		
<b>68</b>	Foot / Feet - A	Silicone Rubber hardness : 55-60	1		
<b>69</b>	Foot / Feet - C	Silicone Rubber hardness : 55-60	1		
<b>70</b>	Foot ShimB	t0.8 SUS304	2		
<b>71</b>	Foot ShimA	t0.8 SUS304	2		
<b>72</b>	Screw	3x8 BT SUS	4		
<b>Items 57-58, 73-83</b>	Front panel assembly				
<b>73</b>	PCB assembly		1sets		
	PCB	PCB 149.3*30*1.6mm UL94V0	1		
	轻触开关	TACT SMD 6*6*5mm 250±50g ROHS	8		
	贴片电阻	R/S 4K7 ±5% 1/8W 0805 SMD ROHS	8		
	贴片LED	LED 120 SMD 0805 ROHS	8		
	贴片电阻	R/S 1K ±5% 1/8W 0805 SMD ROHS	8		
	贴片电阻	R/S 0; 1/8W 0806 SMD ROHS	1		
	组合	L/W 6P UL2468 26AWG P+100+3MM	1		
<b>74</b>	Led light ring	PC 2458 ( E41613 Bayer AG )	1		
<b>75</b>	Spring	OD5.5x5.5Lx5T o0.4	8		
<b>76</b>	Button-1	ABS PA757 ( E56070 Chi Mei) 【SLOW START】	1		
<b>77</b>	Button-2	ABS PA757 ( E56070 Chi Mei) 【SMOOTHIE】	1		

78	Button-3	ABS PA757 ( E56070 Chi Mei) 【ICE CRUSH】	1	
79	Button-4	ABS PA757 ( E56070 Chi Mei) 【PRE CLEAN】	1	
80	control plate	ABS PA757 ( E56070 Chi Mei)	1	
81	Button Seal Ring -B	Silicone Rubber hardness: 55-60	1	
82	button frame	ABS PA757 ( E56070 Chi Mei)	1	
83	Button Seal Ring -A	Silicone Rubber hardness: 55-60	1	
84	Screw	3x7 BT	3	
85	PCB assembly		1 set	
	主控制板	PCB 131.5*84*1.6mm FR-4 UL94V0	1	
	二极管	R/D HER105 1A/400V DIP ROHS	1	
	集成电路	LNK304P DIP-8 ROHS	1	
	可控硅	TRIAC Q6012RH5 TO-220	1	
	继电器	RELAY GH-1A-12L 12A 250VAC ROHS 4PINS SHEN ZHENGOLDEN ELECTRICAL APPLIANCES. CO.LTD TUV :R50158866	1	
	继电器	RELAY HRS4H-S-DC12V 10A 250V ZHEJIANG HKE RELAY CO. LTD TUV: R50116136		
	保险丝	FUSE (PB9500) 10A 250V 5*20MM	1	
	安规电容	X2/C 224K 275V CHANGZHOU DEFU ELECTRIC CO. LTD. ENEC :69240012	1	



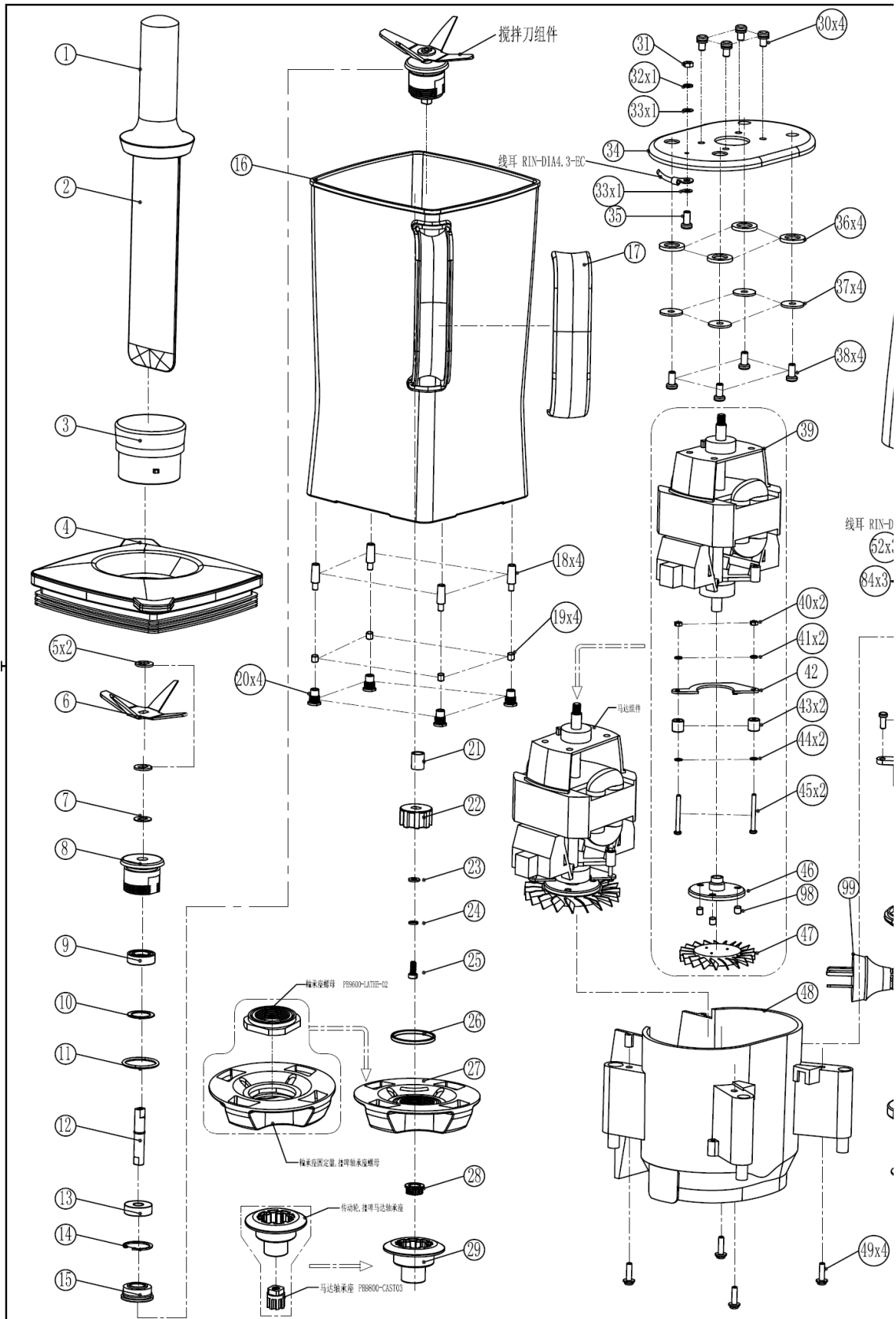
	安规电容	X2/C 224K 275V CARLI ELECTRONIC CO LTD. VDE:40008520			
	安规电容	X2/C 224K 275V DONG GUAN HUA JIA ELECTRONIC CO. LTD.VDE:40009259			
	安规电容	X2/C 224K 275V ULTRA TECH XIPHI ENTERPRISE CO. LTD. VDE:40024534			
	安规电容	X2/C 224K 275V SONGTIAN ENTERPRICE CO.LTD. TUV:R50136379			
	金属氧化膜电阻	R/S 100 ±5% 1/2W TAPIN ROHS	1		
	压敏电阻	VARISTOR 7D471K BRIGHTKING SHENZHEN CO LTD. VDE:40027827	1		
	压敏电阻	VARISTOR 7D471K (ZOV)ROHS			
	压敏电阻	VARISTOR STE07D471K SHANTOU HIGH NEW TECHNOLOGY DEV.ZONE SONGTIAN ENTERPRISE CO.LTD. VDE:40023049			
	电解电容	E/C 4.7uF 400V M 105°C 10*13mm ROHS	2		
	电解电容	E/C 10UF 35V 105°C 5*11MM ROHS	1		
	电解电容	E/C 100UF 35V 105°C 6.3*12MM ROHS	1		
	电解电容	E/C 220UF 10V M 105°C 6MM*7MM ROHS	1		
	螺丝	SCREW 3.0*8mm TR ) ROHS	1		
	螺丝帽	NUT M3	1		
	散热片	HEATER SINK 35*13*25MM ROHS	1		
	垫片	M3.2 ROHS	1		
	电容	C/C 103M 1KV ROHS	1		
	Y2电容	Y/C 1500PF M 250V SONGTIAN ENTERPRISE CO. LTD. VDE 40025748	2		

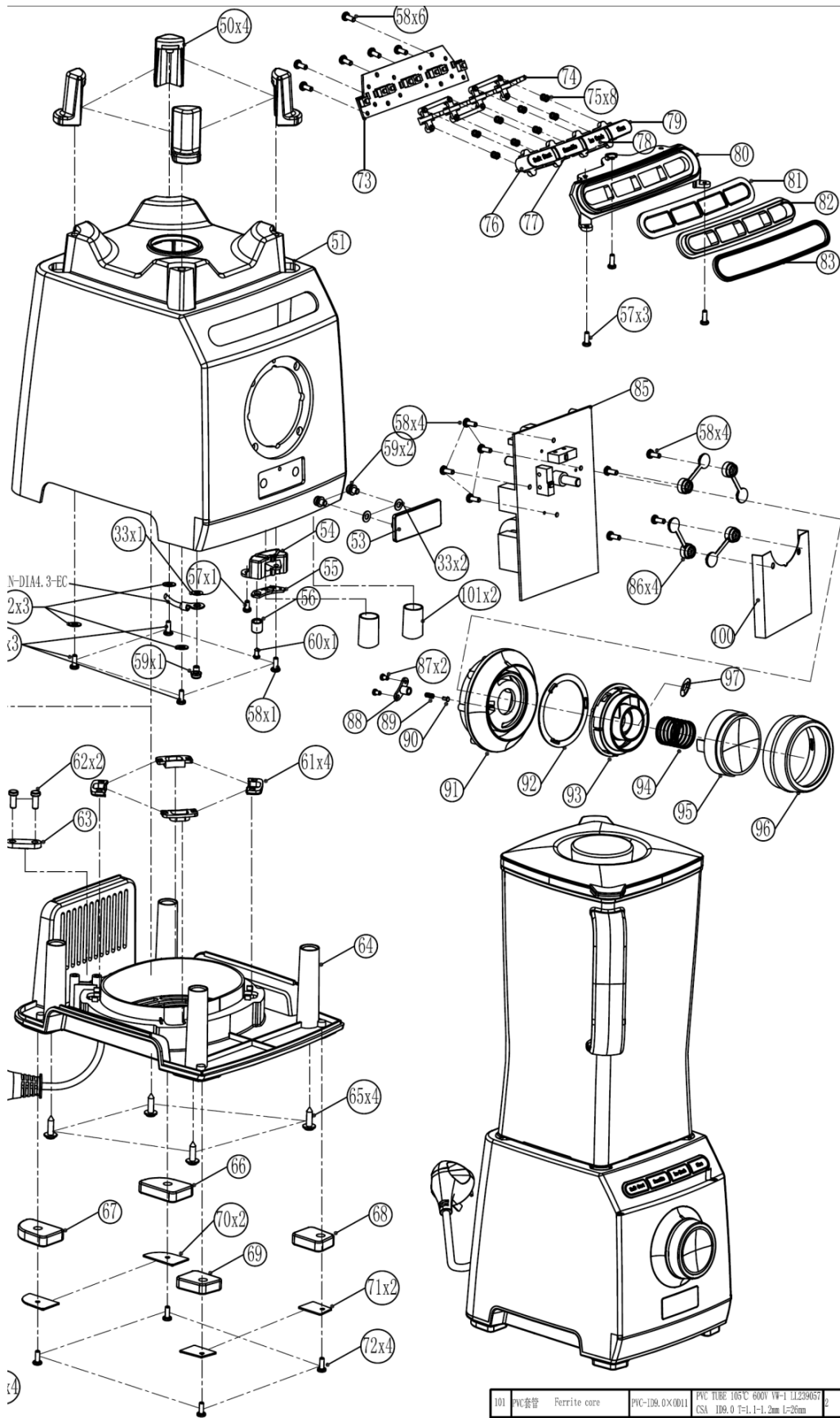
	Y2電容	Y/C 1500PF M 250V (CT7) ROHS			
	Y2電容	Y/C 1500PF M 250V HSUAN TAI ELECTRONIC CO. LTD,. VDE:118413			
	工型电感	D=10MM L=12MM ≥350MA ROHS	1		
	工型电感	D=8MM L=10MM 1.2MH ≥350MA ROHS	1		
	共模电感	19*12mm 0.8mm 5T 4MH DIP4 5A ROHS	1		
	端子	PCB TERMINAL 187 ROHS;0.187',T0.5mm	5		
	陶瓷晶振	Ceramic resonator 8MHz RESONATOR_THT_3LEAD_3.4X7.4 ROHS	1		
	电位器	15K ±5% WX110(010) 24.5MM ROHS	1		
	电位器	SVR 5K MPN:SM065-02-B502-EP B 3PIN ROHS	1		
	微动开关	TACT SW 19.8*6.4*10.6MM 90 ROHS	2		
	微动开关	DMB-1206,5A,250VAC			
	插座	WAFER 3P P=2.0mm 180° PH-3A ROHS	2		
	插座	WAFER 6P P=2.0mm 180° PH-6A ROHS	1		
	二极管	R/D 1N4007 SMD ROHS	3		
	贴片二极管	S/D 1N4148 1206 SMD ROHS	1		
	稳压二极管	Z/D 5V6 1/2W ±5% SMD ROHS	1		
	贴片三极管	NPN MMBT5551LT1 HFE:100-200 SMD SOT-23 ROHS	4		

	贴片三极管	NPN 8050 J3Y SOT-23 ROHS	1		
	贴片电容	C/C 104M 50V 0805 SMD ROHS	7		
	贴片电容	C/C 103M 50V 0805 SMD ROHS	5		
	贴片电容	C/C 102M 50V 0805 SMD ROHS	2		
	贴片电阻	R/S 2.2M $\pm 5\%$ 1/4W 1206 SMD ROHS	2		
	贴片电阻	R/S 24K $\pm 5\%$ 1/8W 0805 SMD ROHS	1		
	贴片电阻	R/S 10K $\pm 1\%$ 1/8W 0805 SMD ROHS	1		
	贴片电阻	R/S 2K $\pm 1\%$ 1/8W 0805 SMD ROHS	1		
	贴片电阻	R/S 1K $\pm 1\%$ 1/8W 0805 SMD ROHS	3		
	贴片电阻	R/S 510 $\pm 1\%$ 1/8W 0805 SMD ROHS	1		
	贴片电阻	R/S 33K $\pm 5\%$ 1/8W 0805 SMD ROHS	1		
	贴片电阻	R/S 100 $\pm 5\%$ 1/8W 0805 SMD ROHS	1		
	贴片电阻	R/S 10K $\pm 5\%$ 1/8W 0805 SMD ROHS	8		
	贴片电阻	R/S 4.7K $\pm 5\%$ 1/8W 0805 SMD ROHS	2		
	贴片电阻	R/S 150 $\pm 5\%$ 1/8W 0805 SMD ROHS	1		
	贴片电阻	R/S 5.1K $\pm 5\%$ 1/8W 0805 SMD ROHS	2		
	贴片电阻	R/S 1M $\pm 5\%$ 1/4W 1206 SMD ROHS	2		
	贴片电阻	R/S 300 $\pm 5\%$ 1/8W 0805 SMD ROHS	1		

	IC	I/C HT46R065 SOP-20 ROHS	1		
86	screw cap	PP6524 (E31765 Basell)	4		
<b>Items 87-97</b>	Dial Assembly				
87	Screw	2.6X4PT	2		
88	SPRING BASE	POM(DELTRIN 100) ( E66288 Ei Dupont)	1		
89	Spring	o0.2x6Lx8T o2 SUS	1		
90	Aluminum	φ 3x φ 2XL5.5 AL	1		
91	Knop Base / Bezel	ABS PA757 ( E56070 Chi Mei)	1		
92	TEETH RING	POM(DELTRIN 100) ( E66288 Ei Dupont)	1		
93	KNOB INNER SPACER	PP6524 (E31765 Basell)	1		
93a	Clip Retainer	POM(DELTRIN 100) ( E66288 Ei Dupont)	1		
94	Spring	o20x22Lx7T o0.8 spring wire	1		
95	Button / Pulse Button	ABS PA757 ( E56070 Chi Mei) +PULSE	1		
96	knob assembly	PP6524 overmould TPE	1		
97	SELF-LOCKED RING	CSN-5, t=0.4mm, OD=Ø14, ID=Ø4.7,	1		
98	Magnet	3 x 6 - (for Motor Fan)	3		
99	Power Cord	H05VV-F 3G0.75mmsq. L=1.60M 10A,250V AC NTC (SF93 SUN FAI - N17808)	1		
99a	Plug	PC-SE-3P 7.5A-10A Sunbeam Plug N20448	1		
100	PCB COVER	PC FR-60 T=0.5mm VO (E103380	1		
101	PVC CASING	PVC TUBE 105°C 600V VW-1 LL239057 CSA ID9.0 T=1.1-1.2mm L=26mm	2		

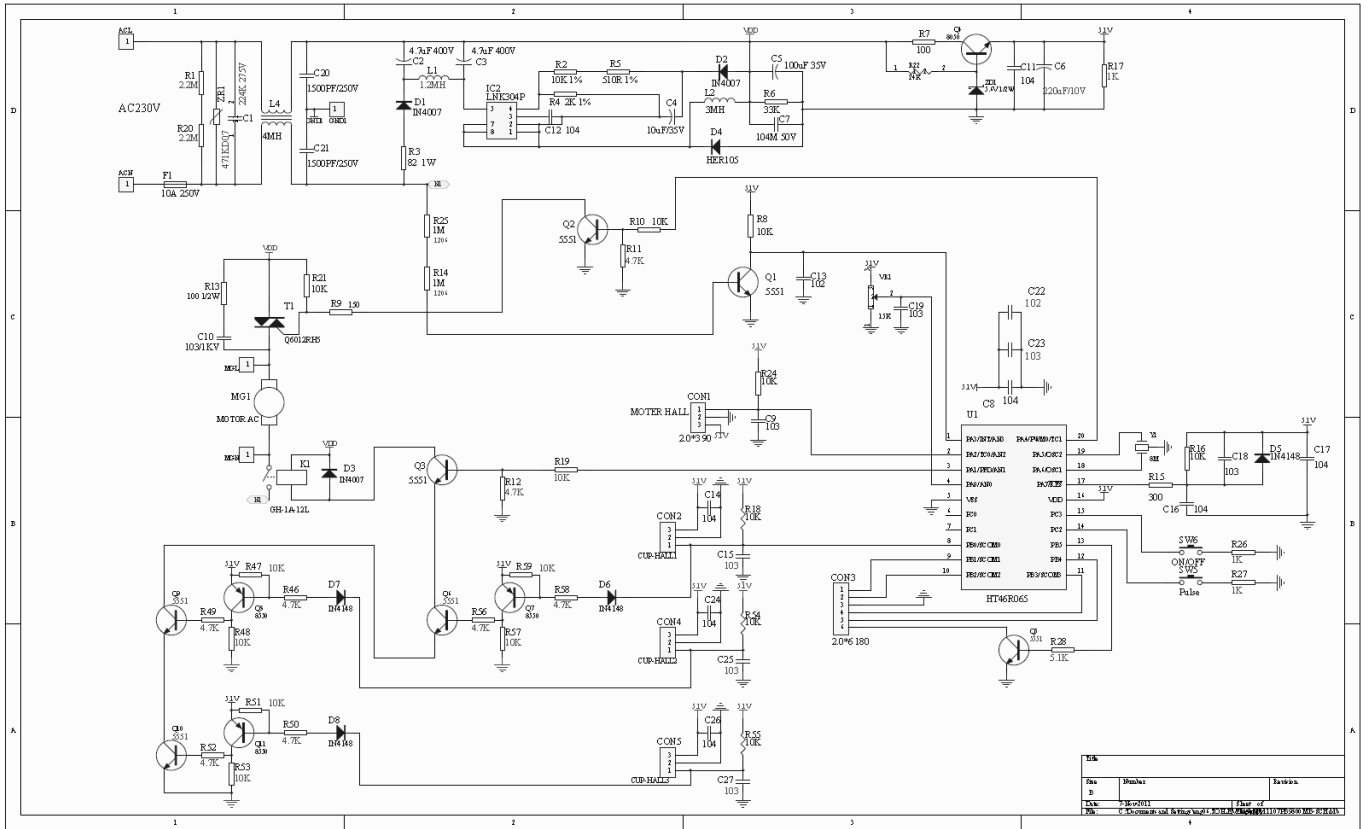
# EXPLODED VIEW DRAWING





101	PVC套管	Ferrite core	PVC-109.0X0011	PVC TUBE 105°C 600V W-1 LL239057
100	控制板/PCB板	PCB COVER	PB9800-(UZO)	CSA 109.0 T=1.1-1.2mm L=26mm
99	电源线	Power Cord	CS-1000-01A-010-EC-1	PC 100.0mm/010-010-0100380
				H05VV-F 3G0.75mm <sup>2</sup> L=1.60M
				SF93 SUN FA1 10A 250V AC N17808
NO	PART NAME	PART NO	MATERIAL AND SPEC	

# CIRCUIT DIAGRAM



# CIRCUIT DIAGRAM

