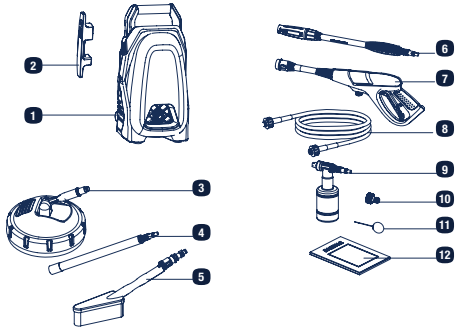


IN THE BOX



- 1 High pressure washer
- 2 Cable storage
- 3 Patio cleaner
- 4 Extend lance for patio cleaner
- 5 Fix brush
- 6 Adjustable spray lance

- 7 Spray gun
- 8 High pressure hose
- 9 Detergent bottle
- 10 Water inlet male connector
- 11 Nozzle pin
- 12 Instruction manual

PLEASE READ INSTRUCTION MANUAL FOR MORE DETAILS.



**LACK OF PRESSURE?
REMOVE POSSIBLE AIRLOCKS! RECONNECT
WATER HOSE FOLLOWING INSTRUCTIONS**



**QUICK START
GUIDE**

1400W
**High
Pressure Washer**
Q1W-SP09-1450

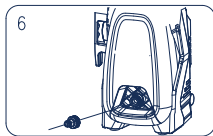
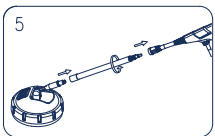
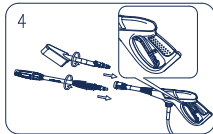
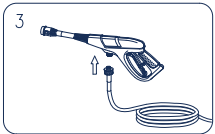
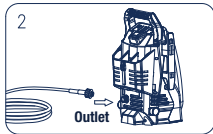
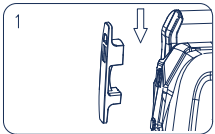


**Important - Please read these instructions
fully before starting assembly**

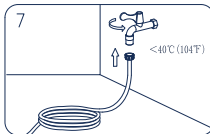
These instructions contain important information that will help you get the best from your pressure washer, ensuring it is assembled correctly and safely. If you need help or have damaged or missing parts, call the Customer Helpline on 0345 605 2067

**AFTER SALES SUPPORT
0345 605 2067**

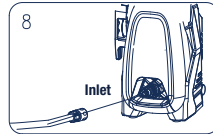
ASSEMBLE



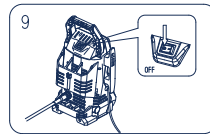
PREPARE



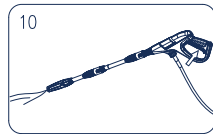
Connect garden hose and water supply. Let the water run through the hose and turn it off.



Install the inlet male connector, connect garden hose and inlet connector, and turn the water on.

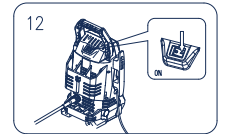
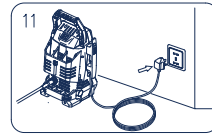


Makes sure the ON/OFF switch is in the OFF position.

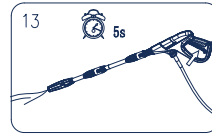


Unlock the safety trigger on the spray gun and press the trigger to pull the water through the machine, until a steady stream of water runs from the lance.

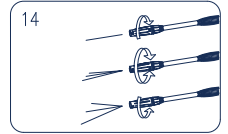
OPERATE



Power on the pressure washer.



Turn the nozzle to the desired spray width and pull the trigger on the spray gun to release a pressured water spray.



Jet spray adjustment is very aggressive. Do not adjust while spraying. Switch the machine off when interrupting your work for extended periods of time.



Special pressure washer detergents can be used to increase the cleaning power of the pressure washer.

