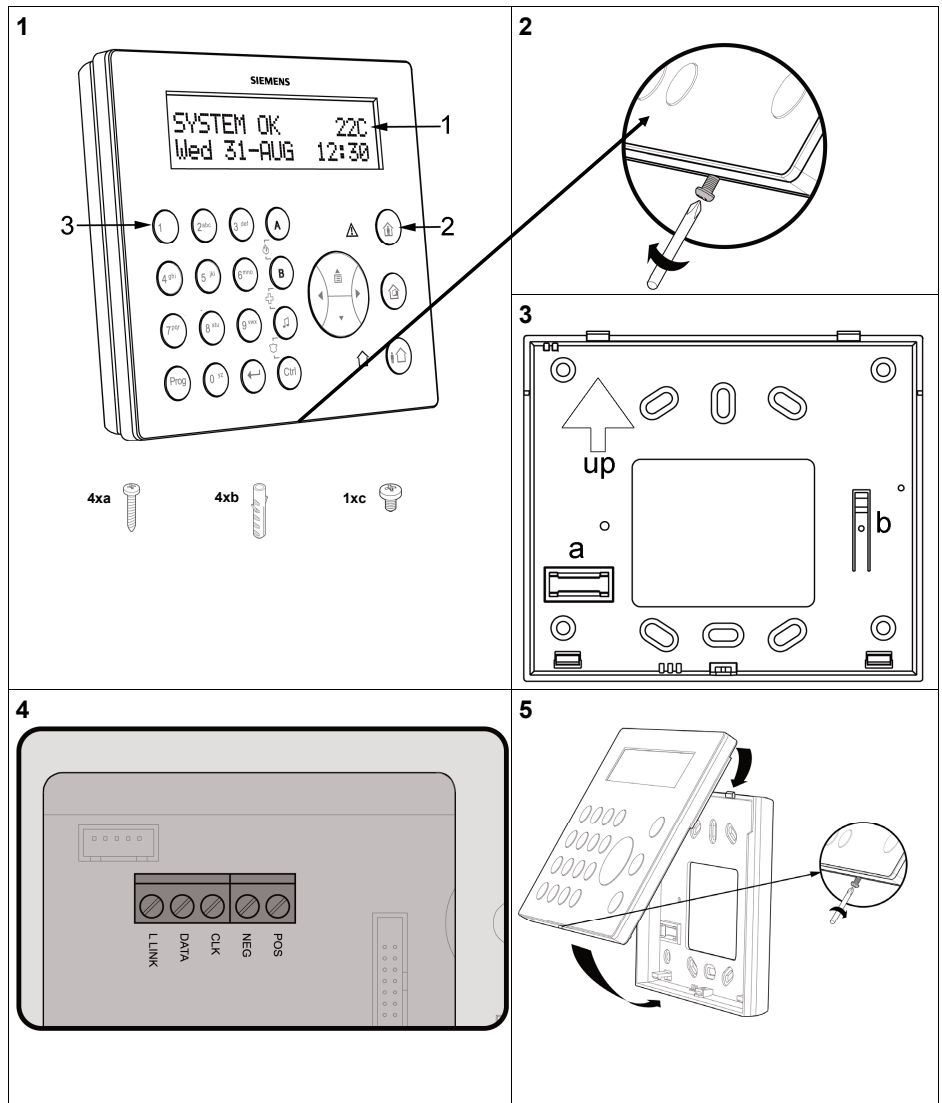


## IKP6-03

LCD Keypad  
LCD-Bedienteil  
Clavier LCD  
Teclado LCD  
Tastiera LCD  
Teclado numérico LC  
LCD-tastgruppe  
LCD-toetsenblok  
Klávésnice s LCD displejem  
Klawiatura LCD  
LCD codeklavier  
LCD Tuştakımı



EDMS: 009919\_b\_--\_--



English	Functions	Installation Instruction																																								
<p><b>⚠</b> Before starting to install and work with this device, please read the Safety Instructions.</p> <p><b>1 Scope of delivery:</b></p> <ul style="list-style-type: none"> <li>• IKP6-03 LCD keypad</li> <li>• Screws (a)</li> <li>• Plugs (b)</li> <li>• Tamper screw (c)</li> </ul> <p><b>Installation</b></p> <p><b>2 Removing the cover</b></p> <ul style="list-style-type: none"> <li>➢ Loose the retaining screw.</li> <li>➢ Lift off the cover from the base.</li> </ul> <p><b>3 Mounting the base</b></p> <p><b>⚠</b> Use only the screws and plugs supplied.</p> <ul style="list-style-type: none"> <li>➢ Mount the base (inside up) to the wall using the built-in spirit level (a).</li> <li>➢ If necessary, adjust the distance to the wall of the back tamper contact (b) with the included tamper screw.</li> </ul> <p><b>4 Connecting up</b></p> <p><b>⚠</b> Disconnect the control panel from power (main and battery).</p> <ul style="list-style-type: none"> <li>➢ Connect the BUS from the control panel to the IKP6-03 unit on the terminal blocks, as described in the Installer Manual.</li> <li>➢ Reconnect the control panel to power: the display and the keys will light up if correctly connected.</li> </ul> <p><b>⚠</b> If the lights are fast flashing, a connection failure has happened. Please recheck connection.</p> <p><b>5 Replacing the cover</b></p> <ul style="list-style-type: none"> <li>➢ Hook the cover onto the top of the base and press into position.</li> <li>➢ Screw in the retaining screws.</li> </ul>	<p>The user communicates with the alarm system via the keypad. The keypad displays continuous information about the status of the alarm system and allows the user to operate the system in different modes, change settings and program users' access codes.</p> <p>The keypad also keeps a log of events, which can be displayed subsequently on demand when reviewing system activities and used to analyze system performance for diagnostic purposes.</p> <p>As an additional comfort feature a temperature indication is included in the display, which shows the temperature around the installed keypad.</p> <table border="1"> <thead> <tr> <th>No.</th> <th>Name</th> <th>Description</th> </tr> </thead> <tbody> <tr> <td>1</td> <td>Display</td> <td>The LCD display shows all the information required for trouble-free operation of the system.</td> </tr> <tr> <td>2</td> <td>Function keys</td> <td>These keys are used to arm the system, enter commands to alter system settings, or scroll through the display.</td> </tr> <tr> <td>3</td> <td>Alphanumeric Kkeys</td> <td>These keys are used to enter codes, change descriptions of zones, or for programming.</td> </tr> </tbody> </table>	No.	Name	Description	1	Display	The LCD display shows all the information required for trouble-free operation of the system.	2	Function keys	These keys are used to arm the system, enter commands to alter system settings, or scroll through the display.	3	Alphanumeric Kkeys	These keys are used to enter codes, change descriptions of zones, or for programming.	<table border="1"> <thead> <tr> <th colspan="2">Technical Data</th> </tr> </thead> <tbody> <tr> <td>Power consumption</td> <td>100 mA (backlight on) - 40 mA (backlight off)</td> </tr> <tr> <td>Voltage</td> <td>9 - 16 V</td> </tr> <tr> <td>Blue back light</td> <td>For key illumination</td> </tr> <tr> <td>Operating temperature</td> <td>-10 - +50 °C</td> </tr> <tr> <td>Dimensions</td> <td>145 x 126 x 22 mm</td> </tr> <tr> <td>Weight</td> <td>~300 gr</td> </tr> <tr> <td>Power supply</td> <td>12 V DC (Via E-BUS)</td> </tr> <tr> <td>LCD</td> <td>KP 2 x 16 characters</td> </tr> <tr> <td>Cable connection</td> <td>recommend to use shielded cable like Kat5.</td> </tr> <tr> <td>Max. bus length</td> <td>Tested up to 200m</td> </tr> <tr> <td colspan="2">Complies with: EN 50130-4+A2, EN61000-6-3, EN55022 + A1+A2+K1, B, EN50131-1, EN50131-3, Security Grade II, Environmental Class II</td> </tr> <tr> <td colspan="2" style="text-align: right;">Certified by:  telefication</td> </tr> <tr> <td colspan="2">For more detailed instructions please refer to the manuals which can be downloaded from internet: <a href="http://www.siemens.com/homesecurity">www.siemens.com/homesecurity</a></td> </tr> </tbody> </table>	Technical Data		Power consumption	100 mA (backlight on) - 40 mA (backlight off)	Voltage	9 - 16 V	Blue back light	For key illumination	Operating temperature	-10 - +50 °C	Dimensions	145 x 126 x 22 mm	Weight	~300 gr	Power supply	12 V DC (Via E-BUS)	LCD	KP 2 x 16 characters	Cable connection	recommend to use shielded cable like Kat5.	Max. bus length	Tested up to 200m	Complies with: EN 50130-4+A2, EN61000-6-3, EN55022 + A1+A2+K1, B, EN50131-1, EN50131-3, Security Grade II, Environmental Class II		Certified by:  telefication		For more detailed instructions please refer to the manuals which can be downloaded from internet: <a href="http://www.siemens.com/homesecurity">www.siemens.com/homesecurity</a>	
No.	Name	Description																																								
1	Display	The LCD display shows all the information required for trouble-free operation of the system.																																								
2	Function keys	These keys are used to arm the system, enter commands to alter system settings, or scroll through the display.																																								
3	Alphanumeric Kkeys	These keys are used to enter codes, change descriptions of zones, or for programming.																																								
Technical Data																																										
Power consumption	100 mA (backlight on) - 40 mA (backlight off)																																									
Voltage	9 - 16 V																																									
Blue back light	For key illumination																																									
Operating temperature	-10 - +50 °C																																									
Dimensions	145 x 126 x 22 mm																																									
Weight	~300 gr																																									
Power supply	12 V DC (Via E-BUS)																																									
LCD	KP 2 x 16 characters																																									
Cable connection	recommend to use shielded cable like Kat5.																																									
Max. bus length	Tested up to 200m																																									
Complies with: EN 50130-4+A2, EN61000-6-3, EN55022 + A1+A2+K1, B, EN50131-1, EN50131-3, Security Grade II, Environmental Class II																																										
Certified by:  telefication																																										
For more detailed instructions please refer to the manuals which can be downloaded from internet: <a href="http://www.siemens.com/homesecurity">www.siemens.com/homesecurity</a>																																										