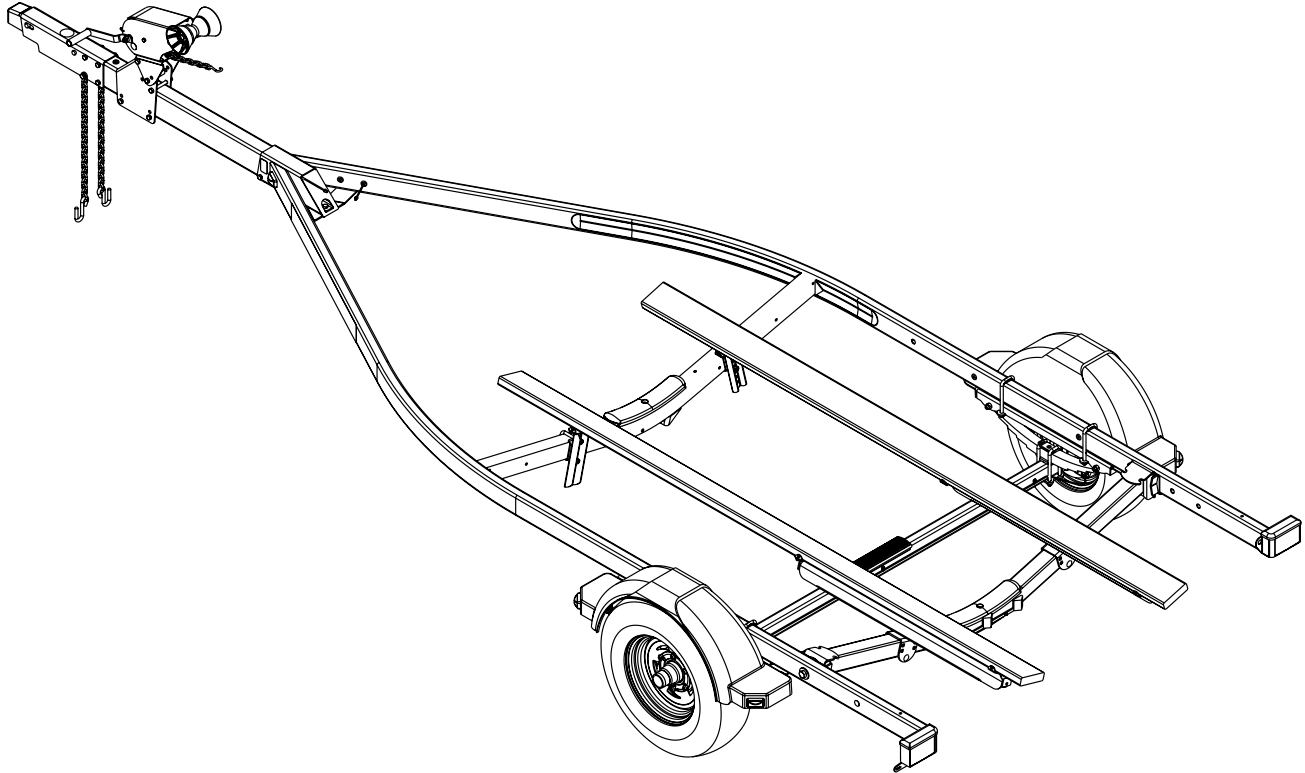


SLB34BLW



SLB34BLW Bundles Required:

4300269	ST205/75R15D Denman Tire/TS Dir Rim ...	2
(or)		
4300268	ST205/75R15D Denman Tire/Galv Dir Rim.	2
68224	Brake Box w/Hardware	1
69082	Literature Bag - Trailers - Brakes	1
80248--	Frame Bundle - 2X4W B34BLW	1
66996--	Tongue Assembly 55", W/UFP Actuator	1

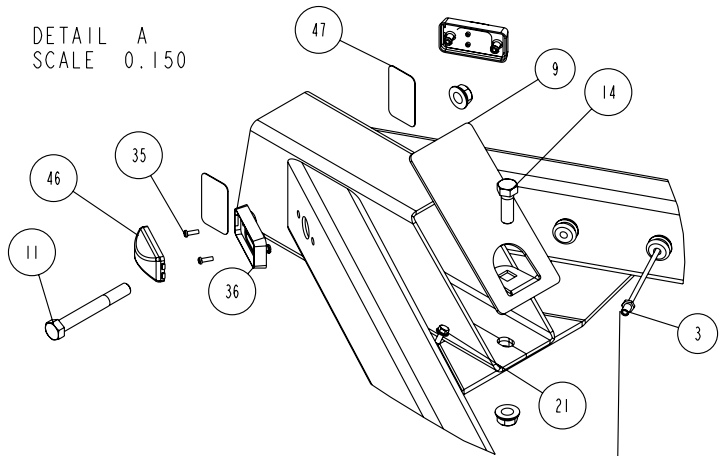
ShoreLand'r offers their product line in either galvanized or painted finish. When ordering parts it is important that you specify the finish or color you have on your product. The five (5) digit number along with a two (2) digit space __, note the parts which can be purchased with various finishes. When ordering these items use the five (5) digit number along with a two (2) digit suffix for the proper finish.

00	Galvanized
01	Arctic White
03	Black
33	Galvanized w/Black Plastic Parts

Table of Contents:

	Page
Frame Drawing & Bill of Materials	2-3
Bunk Assembly Instructions	3
Tongue & Safety Chain Dwg/BOM.	4-5
Safety Instructions	5
Tongue Assembly Instructions	5
White Ground Wire Installation Instructions	5
Safety Chain Assembly Instructions	5
Brake Line Installation Instructions	5
Profile 2000 Winch Dwg/BOM/Assy Instr.	6-7
Chassis Drawing & Bill of Materials	8-9
Tire Size & Carrying Capacity Chart	9
Spring Assembly Instructions	9
Axle Assembly Instructions	9
One Axle Brake Installation	9-10
Tire & Wheel Assembly	10
Trailer Adjustments	10
Axle Adjustments	10
Rear Support System	10
Bunks	10
Front Bunk Support	10
Winch Post Adjustments	10

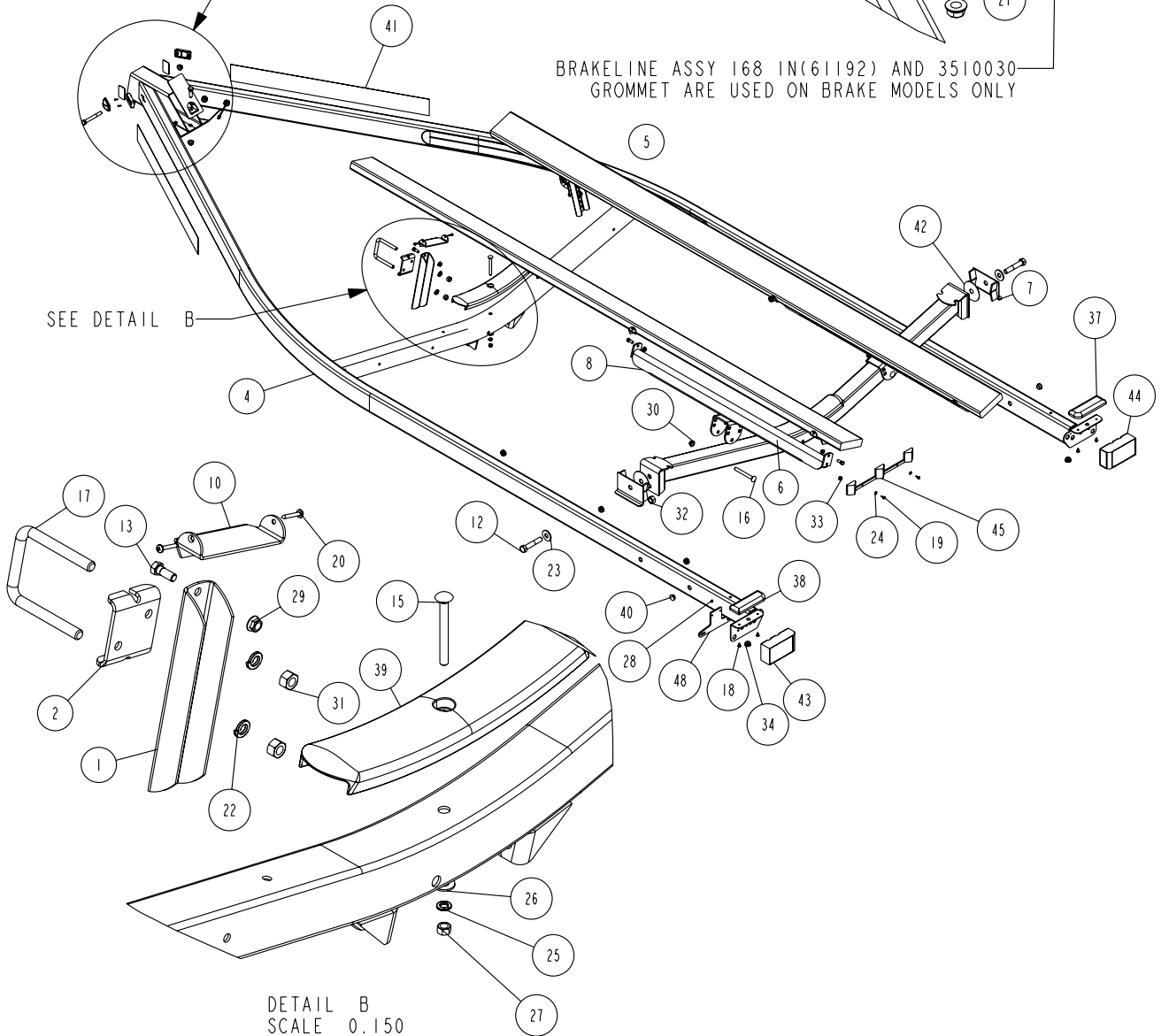
DETAIL A
SCALE 0.150



BRAKELINE ASSY 168 IN(61192) AND 3510030 GROMMET ARE USED ON BRAKE MODELS ONLY

SEE DETAIL A

SEE DETAIL B



DETAIL B
SCALE 0.150

ITEM	PART #	DESCRIPTION	QTY	NOTE
1	60047	ADJ BUNK BRKT	2	
2	60462	ADJUSTABLE BUNK CLAMP	2	
3	61192	BRAKELINE ASSY 168 IN	1	
4	66102	FRAME WMENT 80 WIDE 190 LONG	1	
5	66406	BUNK ASSY BUNK LONG 2X4	2	
6	66835	REAR PIVOT WMENT (80 WIDE)	1	
7	66836	REAR PIVOT STOP WMENT (2X5)	2	
8	66838	2X3 ADJ BUNK CHANNEL WMENT	2	
9	68271	TONGUE COVER PLATE	1	
10	68664	2X6 BUNK BRKT SPUN GALV.	2	
11	0110114	HH 1/2-13 X 4 CS GR5	1	
12	0120281	HH 3/4-16 X 4 CS GR5	2	
13	0140040	HH 3/8-16 X 1 CS GR5	6	
14	0140094	HH 1/2-13 X 1 1/2 CS GR5	1	
15	0210130	CARR 3/8-16 X 3 3/4 GR5	2	
16	0210220	CARR 1/2-13 X 4 1/2 GR5	2	
17	0310228	SUB 1/2 X 3 9/16 X 4 1/4	2	
18	0810126	SCREW SELFTAPPING TYPE B 1/4X1/2	4	
19	0810925	SCREW SELFDRILL HWH #10-16 X 3/4	2	
20	0810930	SCREW SELFTAP #10-12X1 1/4 TYPE A	4	
21	0810945	SCREW SELFDRILL 1/4-14X3/4	1	
22	1310040	LOCKWASHER 1/2 S/T MED	4	
23	1310120	WASHER USS FLAT 3/4 ULTRASEALED	2	
24	1310170	WASHER#10 USS FLAT	2	
25	1340030	LOCKWASHER 3/8 S/T MED ULTRASEAL	2	
26	1340095	WASHER USS FLAT 3/8	2	
27	1410109	HEX NUT 3/8-16	2	
28	1410151	HEX NUT #10-24	2	
29	1440101	HEX LOCKNUT FLANGE 3/8-16 W/T&T	6	
30	1440102	HEX LOCKNUT FLANGE 1/2-13 W/T&T	4	
31	1440159	HEX NUT FINISH 1/2-13	4	
32	1440321	HEX LOCKNUT 3/4-16 GRB	2	
33	3510022	GROMMET 7/16IN MOLDED	1	
34	3510030	GROMMET 7/8IN MOLDED	11	
35	3510158	PLASTIC DRIVE RIVOT	4	
36	3510253	LIGHT BEZEL - AMBER	2	
37	3510255	STEP PAD RIGHT 2 1/2 X 7	1	
38	3510256	STEP PAD LEFT 2 1/2 X 7	1	
39	3510542	MOLDED REAR CROSSMEMBER PAD	2	
40	3520009	PLUG 13/16 IN WHITE PLASTIC	2	
41	4810501	DECAL SHORELANDR LARGE	2	
42	4811339	WASHER NYLON - 13/16 ID X 3-3/4	2	
-	4811348	DECAL BLACK AND WHITE EQUILOAD	2	
43	5110013	DRY LAUNCH LIGHT ASSY (LEFT)	1	
44	5110014	DRY LAUNCH LIGHT ASSY (RIGHT)	1	
45	5110046	3 LIGHT CLUSTER WITH GROUND WIRE	1	
-	5110051	HARNESS - LIGHT CLUSTER GROUND	1	
46	5110112	MARINE YELLOW CLEARANCE LIGHT	2	
47	5110127	REFLECTOR ANDERSON AMBER	2	
48	5110348	BO LICENSE PLATE BRACKET	1	
-	5110354	HARNESS FRAME 2X4 LEFT 17FT 21	1	
-	5110355	HARNESS FRAME 2X4 RIGHT 17FT 2	1	
-	5110365	WIRE 2X5 TANDEM FENDER RIGHT	2	
-	5110455	DO-RAY DOUBLE GROUND WIRE	1	

FINAL ASSEMBLY INSTRUCTIONS

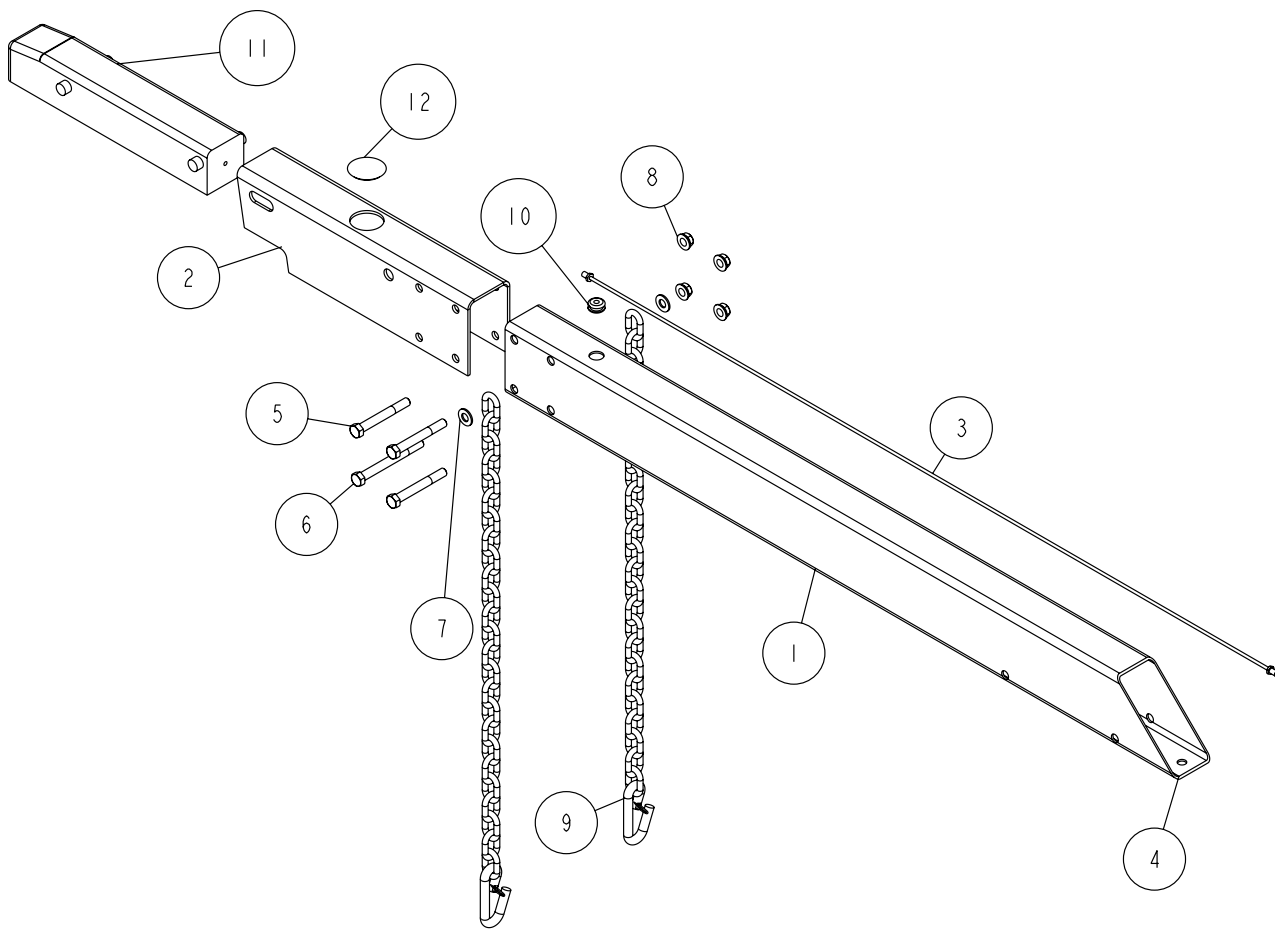
Remove the hardware bag from the frame, remove parts and sort by size.

B-SERIES BUNK ASSEMBLY

Locate the two 2 x 6 bunk assemblies. Note that the bunk mounting brackets are assembled to the bunks at the factory. Place the end with the two brackets towards the rear of the trailer. Place the assembly on the equiloal bunk arm and secure by placing a 3/8" x 1" hex bolt through the bracket on the bunk and the ear on the end of the equiloal arm. Secure in place using a 3/8" lock nut. Repeat on the other end of the arm. (See Diagram A).

Place the other end of the bunk in the bracket installed on the front cross member. Note that this bracket is not attached to the bunk because the trailer can be adjusted to two different lengths. Once the proper position for the rear crossmember is determined, the front of the bunk can now be attached to the bracket using two- No. 10 x 1-1/4" self tapping screws as shown in Detail B.

The 3/8" x 1" bolts attaching the bunks to the equiloal arms and front bunk bracket can be tightened but not over tightened.



ITEM	PART #	DESCRIPTION	QTY	NOTE
1	65541	TONGUE 3X5X55	1	
2	65542	OUTER HOUSING FOR UFP ACTUATOR	1	
3	65601	BRAKELINE ASSY 56IN	1	
4	66996	TONGUE ASSY W/UFP ACTUATOR 55IN	1	
5	0110114	HH 1/2-13 X 4 CS GR5	3	
6	0110120	HH 1/2-13 X 5 CS GR5	1	
7	1340100	WASHER USS FLAT 1/2	2	
8	1440102	HEX LOCKNUT FLANGE 1/2-13 W/T&T	4	
9	2210301	CHAIN SAFETY 8/0 MACH X25LK W/LA	2	
10	3510030	GROMMET 7/8IN MOLDED	1	
11	3991015	ACTUATOR UFP INNER DISC BRAKE	1	
-	4811471	DECAL CAUTION BRAKE LOCKOUT KEY	1	
-	4850184	DECAL FOR COATED UFP ACTUATOR	1	
-	5110347	HARNES TONGUE 5 PRONG FLAT	1	
12	7010168	CAP PLASTIC OUTER MEMBER 2IN DI	1	
-	7010188	DECAL PUSH BRKT UFP ACTUATORS	1	

SAFETY INSTRUCTIONS

PROPER TONGUE WEIGHT MUST BE MAINTAINED TO ENSURE SAFE TOWING. SEE OWNER'S GUIDE FOR INSTRUCTIONS

Before towing, ALWAYS check the following to insure that:

1. All parts, bolts, nuts and wheel lugnuts are tight.
2. Tiedowns, winch strap and bow-eye safety chain are secure.
3. Tires are inflated to manufacturer's standards.
(see tire sidewall or Owner's Guide)
4. Wheel bearings have adequate grease.
5. Trailer coupler and coupler ball are the same size.
6. Coupler is properly attached and secured to coupler ball.
7. Trailer safety chains are crossed under the tongue and attached to towing vehicle.
8. All lights are operational.
Note: It is recommended that the trailer lights be disconnected before backing into the water.
9. Trailer tongue jack is in up or travel position.

REFER TO YOUR
ShoreLand'r[®]
OWNER'S GUIDE AND OTHER
DECALS ON TRAILER FOR
ADDITIONAL INFORMATION

4810709

TONGUE

The tongue is shipped separate of the frame. Locate the appropriate tongue and install by sliding it in the front of the tongue channel.

Line the holes in the tongue with the holes in the tongue channel. Install the 1/2" x 4" hex bolt in the front cross hole and secure with a 1/2" lock nut.

Remove the wire harness from the rear of the tongue. Place the wire harness and the brake line through the hole provided in the tongue cover plate. See Detail A in Diagram A.

Secure the tongue cover plate in position with the same 1/2" x 1-1/2" hex bolt that secures the back on the tongue to the tongue channel of the frame. Secure with 1/2" lock nut. Tighten both bolts just installed.

Plug the tongue wire harness ends into the frame harnesses by matching colors and ends. Push the extra wire provided either into the rear of the tongue or else remove the grommet in the side frame and place the extra wire in the side frame. Replace grommet just removed.

WHITE GROUND WIRE INSTALLATION

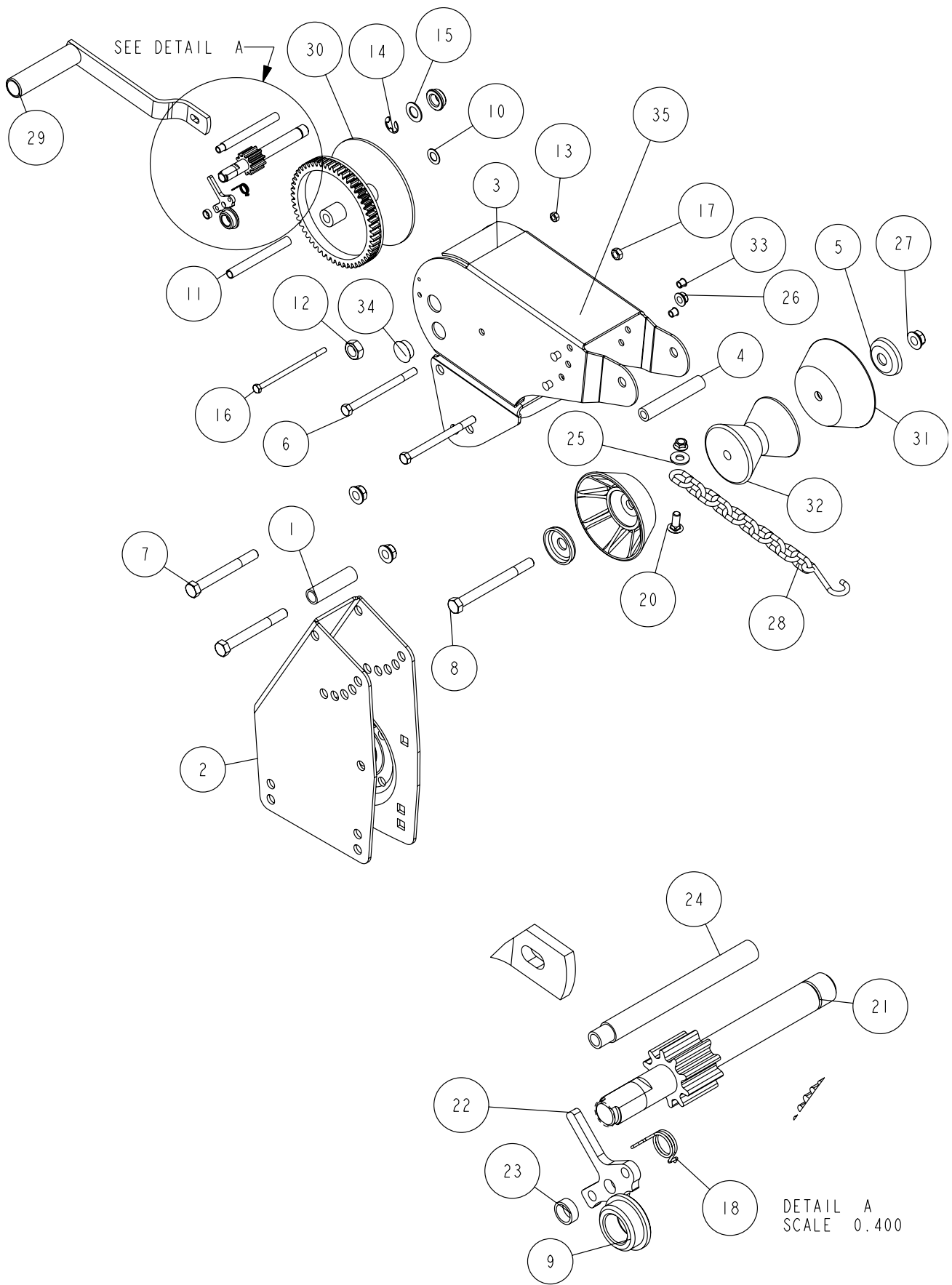
Place the self-tapping screw provided through the round metal ring on the white ground wire of the tongue harness located at the rear of the tongue. Attach the ground wire to the main frame by driving the screw in the hole provided next to the tongue channel of the frame. This will assure a positive ground for the lighting.

SAFETY CHAINS

Locate the 1/2" x 5" hex bolt. Slip the bolt through a 1/2" at washer, then place through the last link of one of the safety chains. Slide through actuator housing and tongue. Slide other safety chain over bolt and add a 1/2" flat washer. Secure with a 1/2" flange lock nut. See Diagram B. Assembly is complete.

BRAKE LINE

Locate the brass brake line coupling. Remove the plastic cap and thread the brake line coming out the rear of the tongue into one end of the coupling. Bend the line in a smooth gradual radius being careful not to kink the line. Bend so it can be mated to the brake line from the side frame. Once aligned, thread the side frame brake line into the other end of the coupling. Tighten both lines into the coupling.



DETAIL A
SCALE 0.400

ITEM	PART #	DESCRIPTION	QTY	NOTE
1	60816	WINCH POST SPACER	1	
2	60931	WINCH POST 9IN	1	A
3	65657	WINCH HOLDER CASE	1	
4	68671	NYLON WINCH CASE BUSHING-3/4OD X 4.25	1	
5	68683	CUP WASHER - WINCHES	2	
6	0110064	HH 3/8-16 X 5 CS GR5	2	
7	0110118	HH 1/2-13 X 4 1/2 CS GR5	2	
8	0110125	HH 1/2-13 X 5 1/2 CS GR5	1	
9	204009	SHAFT BUSHING DL1400/2500	2	
10	204360	SPACER WASHER DL1602	1	
11	204808	REEL SPACER DL1700	1	
12	204809	HANDLE HUT DL1602	1	
13	205014	LOCK NUT DL1400/1700/1802/2500	1	
14	205116	E-RING DL1602/1700/2500	1	
15	205139	SPACER WASHER	1	
16	205269	RATCHET PAWL BOLT 1/4-20 X 5	1	
17	205270	LOCKNUT 3/8-16 JAM STYLE FOR WINCH	1	
18	206281	EXTENSION SPRING - BLUE	1	
19	206282	WARRANTY TAG DL1800/1802 WINCH	1	
20	0210102	CARR 3/8-16 X 1 GR5	1	
21	304731	DRIVE SHAFT UPPER DL1802	1	
22	404868	REVERSABLE RATCHET PAWL	1	
23	404872	RACHET SPACER DL1700/2500	1	
24	404878	RATCHET SLEEVE DL1700/2500	1	
25	1340095	WASHER USS FLAT 3/8	1	
26	1440101	HEX LOCKNUT FLANGE 3/8-16 W/T&T	2	
27	1440102	HEX LOCKNUT FLANGE 1/2-13 W/T&T	3	
28	2210145	CHAIN 1/4(7MM)X 10 LINKS	1	
29	3110237	WINCH HANDLE DL1802	1	
30	3110348	WINCH REEL W/STRAP DL1800/1802	1	
31	3510586	END CAP PROFILE 2000 TAN	2	
32	3510587	ROLLER 4" BOW YATES TAN #450	1	
33	3520011	PLUG 3/8IN WHITE PLASTIC	4	
34	3520019	PLUG 1IN WHITE PLASTIC	2	
-	4811349	DECAL PROFILE 2000	2	
-	4811358	DECAL CLEAR W/BLACK LETTERS PROF	1	
35	4811451	DECAL NMMA CERTIFIED TRAILER	1	
-	4850383	DECAL CAPACITY DL1802A	1	

WINCH POST ASSEMBLY

The height that the bow eye is placed in your boat will determine the length of winch post required. Once this is determined, attach the winch base to the tongue with three 1/2" x 4" carriage bolts and lock nuts.

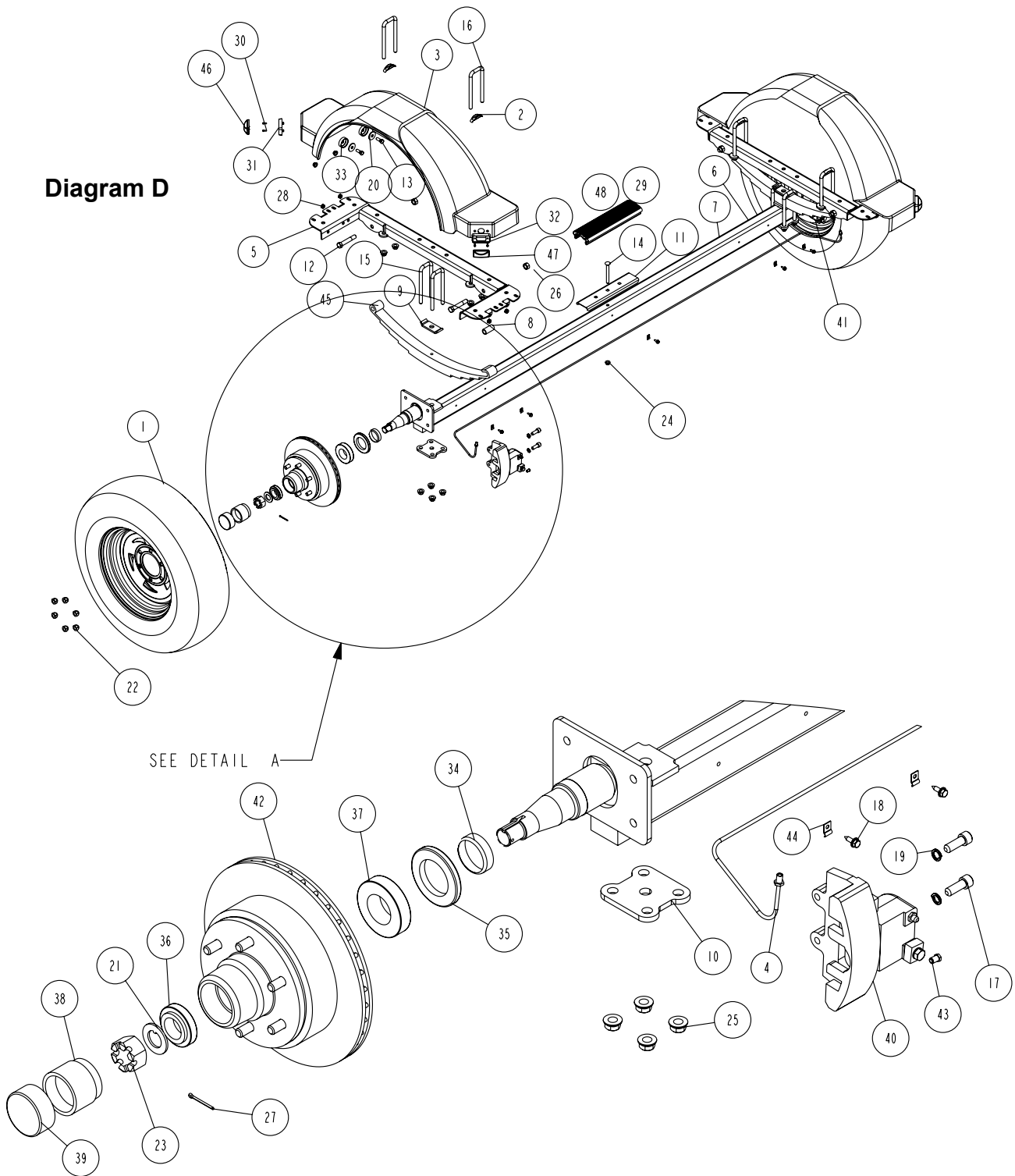
Align the holes in the **Profile 2000** mounting channel with the holes in the top of the winch base. Attach the front of the winch head mounting channel to the base by placing a 1/2" x 4-1/2" hex bolt through the hole closest to the front of the winch base. Secure with a lock nut. Do not tighten.

Note that the winch head can now be rotated either up or down. Identify the correct hole combination to use to position the bow eye roller just above the bow eye of your boat. When determined, secure in this position by placing the bushing as shown in Diagram C inside the winch base so it aligns with the hole just identified for the proper adjustment. Insert another 1/2" x 4-1/2" hex bolt through the determined mounting hole in the mounting channel and winch base making sure the bolt passes through the bushing as well. Secure with a 1/2" lock nut.

Tighten all bolts.

NOTES	
A	9 INCH BASE SHOWN, 7 INCH BASE IS 60930, AND 14 INCH BASE IS 60932

Diagram D



BILL OF MATERIALS			
ITEM	PART #	DESCRIPTION	QTY
1	-	ST205/75R15D TIRE/MSILVER DIR RI	2
2	4279	SHIM PAD U BOLT I2GA FRAME	4
3	62201	FENDER 10IN POLY	2
4	65544	BRAKE LINE ASSY 95"	1
5	66162	SPRING BRKT 10IN SINGLE	2
6	67952	AXLE ASSY WITH BRAKES FOR 3500#	1
7	67956	AXLE WMENT FOR 3500	1
8	68610	SPRING BRKT BUSHING PLATED ZYU	2
9	68614	SPRING CLAMP 1/4X1 1/2X4 ZYU	2
10	68616	SPRING AND AXLE U-BOLT PLATE	2
11	68673	2" PLASTIC CHANNEL BRACKET	1
12	0110170	HH 9/16-18 X 3 1/4 CS GR5	4
13	0140040	HH 3/8-16 X 1 CS GR5	8
14	0210130	CARR 3/8-16 X 3 3/4 GR5	1
15	0310170	SUB 1/2 X 2 5/16 X 6 1/2	4
16	0310276	SUB 1/2 X 2 9/16 X 6 1/2	4
17	0610042	SOCKET HEAD SCREW 7/16-20X1-1/4	4
18	0810945	SCREW SELFDRIILL 1/4-14X3/4	5
19	1310035	LOCKWASHER 7/16 S/T MED	4
20	1310163	WASHER 1.377X.39X.105	8
21	1310191	TONGUE WASHER 1 3/4OD X IID	2
22	1410229	HEX LUGNUT 1/2-20 13/16 OD Z&U	12
23	1410359	HEX NUT SLOTTED 1-14 PLAIN	2
24	1440101	HEX LOCKNUT FLANGE 3/8-16 W/T&T	9
25	1440102	HEX LOCKNUT FLANGE 1/2-13 W/T&T	16
26	1440259	HEX LOCKNUT 9/16-18 GRA	4
27	1540038	COTTER KEY 1/8 X 1 1/2 ULTRASEAL	2
28	3510022	GROMMET 7/16IN MOLDED	8
29	3510132	AXLE PAD 12IN BLK	1
30	3510158	PLASTIC DRIVE RIVOT	8
31	3510253	LIGHT BEZEL - AMBER	2
32	3510254	LIGHT BEZEL - RED	2
33	3510263	RUBBER CUP WASHER	8
34	4410091	SPINDLE SLEEVE 2 1/4 IN	2
35	4410136	SEAL 2 1/8ID	2
36	4410165	ROLLER BEARING 1 1/4IN	2
37	4410180	1-3/4 KOYO BEARING	2
38	4410243	BEARING BUDDY 1 1/4IN OUTER	2
39	4410248	SL BEARING PROTECTOR BRA	2
40	4410289	CALIPER ASSY 9.75 LEFT	1
41	4410290	CALIPER ASSY 9.75 RIGHT	1
42	4410292	HUB/VENTED ROTOR, 12IN 6 BOLT HUB	2
43	4510506	PLUG - #131X3B (BLUEDOT) - BRASS	1
44	4510520	CLAMP-BLUEDOT #12090-3/16IN TUBE	5
45	4610048	SPRING 5 LEAF HOOK	2
46	5110112	MARINE YELLOW CLEARANCE LIGHT	2
47	5110113	MARINE RED CLEARANCE LIGHT	2
48	SA-3387	SUB ASSY 2" PLASTIC CHANNEL BRACKET	1

Tire Size and Carrying Capacity Chart

Tire Size..... ST205/75R 15-D
GVWR 4240 lb.
Carrying Capacity..... 3400 lb.
Axle Disc Brakes

Refer to the tire side wall for correct tire pressure.

SPRINGS

Position the axle so it is properly aligned with the trailer and the brake calipers are located on the back side of the axle. (See Diagram D).

Place the springs on the top side of the spring pads welded to the axle. (See chassis Diagram D). Note that the hook end of the spring must be mounted to the rear of the trailer. Place a spring clamp on the top center of the spring as shown. Next place the 1/2" x 6-1/2" U-bolts down over the top of the spring clamp, spring and axle as shown.

Place the spring and axle U-bolt plate onto the ends of the two U-bolts just installed. Secure in place with 1/2" lock nuts. Thread onto the U-bolts but do not tighten securely until the complete unit is in position on the trailer. Repeat on the other spring.

AXLE

Place one of the spring bracket bushings into the rear of the spring bracket and secure with a 9/16" x 3 1/4" hex bolt and hex lock nut.Repeat in other spring bracket.

Position the axle under the frame, then hook the loop end of the spring around the bushings just installed. Note that if the axle is positioned too low when trying to hook, the loops will not hook around the bushings.

Raise the front of the springs up so they align with the front hole of the spring bracket. Secure in place with 9/16" x 3-1/4" hex bolts and lock nuts.

Tighten all axle U-bolts and spring bolts not tightened at this time.

ONE AXLE BRAKE INSTALLATION

Cut the tape securing the brake line hose to the axle. Remove the brass plug from the port in the brass block on the right brake caliper. Thread in the male end of the brake hose and tighten to 6-8 ft. lb. or else 72-96 in. lb. of torque.

DO NOT OVER TIGHTEN. Over tightening will cause the brass block to crack and then leak.

Place the other end of the hose through the hole in the brake line clip bracket and secure with the U-shaped hose clip provided.

Remove the plastic cap from the end of the frame brake line coming out of the side frame.

Uncoil the brake line so that it reaches the end of the hose just attached to the brake line clip bracket. Thread the brake line fitting into the brake line hose. Tighten.

NOTE: The axle has brake fluid installed in the calipers and the axle line when it is assembled at the factory. This is done to protect the inner parts of the brake system during shipping and storage. The complete brake system including the axle **MUST** be re-bled to ensure that all air has been removed from the brake system. For bleeding instructions see the **UFP Brake Bleeding Manual** or else the **ShoreLand'r Disc Brake Manual**.

Fill the actuator reservoir with brake fluid and bleed the line per the instructions in the **Brake Manual**.

TIRE & WHEEL ASSEMBLY

Mount the tire and wheel assemblies using the 1/2" fine threaded tapered lug nuts provided. Tighten to 85-95 ft./lb. torque using the rotation pattern as shown in the **ShoreLand'r's Owners Manual**.

Re-torque the lug nuts after 50 miles driving and then periodically thereafter.

TRAILER ADJUSTMENTS

The adjustment of the trailer to your boat is very important not only for the trailer, but also the boat. Failure to do so may lead to potential failure or damage to either the trailer or boat.

Adjust as follows:

AXLE ADJUSTMENT

The amount of tongue weight on your trailer can be adjusted as follows:

To lower the tongue weight, adjust the axle assembly forward. To increase the tongue weight, adjust the axle backward. The distance that the axle assembly has to be moved will vary because it is directly related to the weight and center of gravity of the boat placed on it.

Best towing is achieved when the tongue weight is 5-7% of the total gross load of the complete unit.

Note: Wire harnesses and brake line lines (if equipped with brakes) will need care when moving the axle assembly.

REAR SUPPORT SYSTEM

Place the boat on the trailer so that the transom is located at the rear of the support system. The center of the rear rollers on the roller rack should be approximately 4" from the transom. This gives you maximum support on the transom.

The rear cross member is adjustable forward or backward to allow the trailer to be adjusted to various length boats on all models except the XLW. This is accomplished by removing the pivot bolt on holds each end of the rear pivot to the side

frame. Reposition the rear pivot arm into the other hole position predrilled in the side frame.

Reattach the rear pivot to the side frame with the bolts just removed. Tighten.

The wire harness for the three-light identification light must be repositioned where it comes from the side frame to the rear pivot to eliminate slack, and sagging of the wiring.

BUNKS

Make sure the bunks are positioned far enough apart to give your boat as much stability as possible while transporting. Position the bunks so they are located just the outside of a strake that your boat may have. This will help center your boat and assist when loading. The bunks need be adjusted up high enough to keep the keel from resting on the center pads. A minimum of one to two inches clearance is desirable.

FRONT BUNK SUPPORT

The front bunks should be adjusted either in or out so that the bunk will continue to run just to the outside of the strake of the boat. Adjust the bunks up so that there is approximately 1-2 inches clearance between the keel of the boat and the center cross member pad.

WINCH POST

Once all other adjustments are complete the winch post can be adjusted. Slide the winch post base backward on the tongue until the bow roller comes in contact with the boat.

The bow roller needs to be positioned directly above the boat bow eye to prevent your boat from moving forward in the event of a sudden stop. It can be moved up or down by removing the back bolt that mounts the winch head to the base. When this bolt is removed, the head can be rotated up or down to reach the desired height required to fit your boat. Once in this position, align the closest pair of holes in the brackets and reinsert the bolt just removed. Tighten.

Attach the winch strap and crank winch tight. Attach the bow eye safety chain into the bow eye of the boat as well. This is just another level of protection to keep your boat and trailer together as one unit.

Adjustments are now complete. Double check your boat for fit. If the desired fit has been achieved, tighten all fasteners that may have either been left loose or have been loosened to do the adjusting.

Note: All nuts and bolts must be tightened before towing.

The law requires that the white ground wire on both the tongue wire harness and vehicle harness be properly grounded to respective trailer and vehicle frames.

Recheck all fasteners on the complete trailer to make sure they are all tight and ready for towing. All fasteners should be periodically checked before towing.

See your **ShoreLand'r Owner's Guide** for further technical information regarding your trailer and its components.