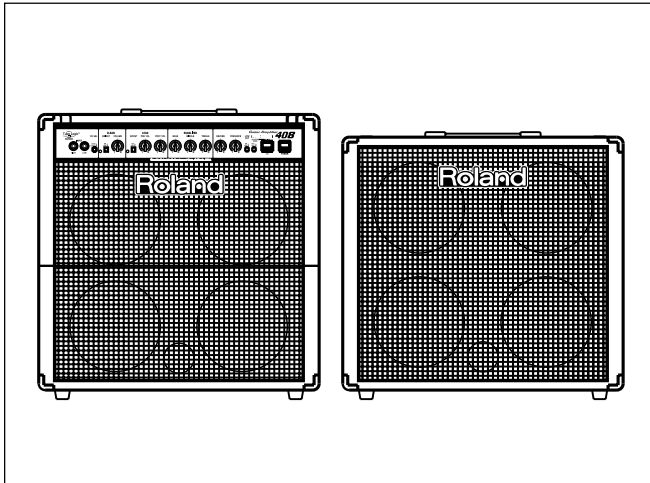


GC-408/GC-408S SERVICE NOTES

GC-408 : GUITAR AMPLIFIER
GC-408S : SPEAKER BOX

First Edition
Issued by RJA

TABLE OF CONTENTS	Page
SPECIFICATIONS	1
PANEL LAYOUT	2
EXPLODED VIEW	
GC-408 CABINET	3
GC-408S CABINET	4
CHASSIS	5
NOTICE	6
WIRING DIAGRAM	7-10
PARTS LIST	11,12
CIRCUIT BOARD	13
CIRCUIT DIAGRAM	14



Copyright © 1997 by ROLAND CORPORATION
All rights reserved. No part of this publication may be reproduced in any form without the written permission of ROLAND CORPORATION.

SPECIFICATIONS

GC-408:Guitar Amplifier

Rated Power Output
60 W/8 Ω
80 W/4 Ω (When the speaker box GC-408 is connected.)

Nominal Input Level (@ 1 kHz)
CLEAN Channel INPUT HIGH -36 dBm / 680k Ω
INPUT LOW -26 dBm / 100k Ω
LEAD Channel INPUT HIGH -65 dBm / 680k Ω
INPUT LOW -55 dBm / 100k Ω
0 dBm = 0.775 Vrms

Speakers
20 cm (8 inches) x 4

Controls
CHANNEL SELECT Switch
CLEAN Channel BRIGHT Switch
VOLUME Knob
LEAD Channel BOOST Switch
PRE VOLUME Knob
EQUALIZER BASS Knob
MIDDLE Knob
TREBLE Knob
MASTER REVERB Knob
PRESENCE Knob
LOW CUT Switch
SQUEEZE LEVEL Switch
POWER SQUEEZER Switch
POWER Switch (w/Indicator)

Indicator
CLEAN Channel
LEAD Channel

Connectors
INPUT Jack(HIGH/LOW)
FOOT SWITCH Jack(CHANNEL, SELECT, BOOST, REVERB)
EFFECT SEND Jack
EFFECT RETURN Jack
EXTERNAL SP OUT Jack

Power Supply
100V(50Hz/60Hz),117V,230V or 240V

Power Consumption
60W(AC 100V) / 80W(117V/230V/240V)

Dimensions
561 (W)x 316 (D)x 576 (H) mm
22-1/8 (W) x 12-1/2 (D) x 22-11/16 (H) inches

Weight
20.6 kg / 45 lbs 7 oz

Accessories
Owner's Manual English (SS000103)
Owner's Manual Japanese (SS000104)

Options
Footswitch FS-SL(BOSS)
External speaker box GC-408S

GC-408S:Speaker Box

Speakers
20 cm (8 inches) x 4

Rated Input
80 W

Impedance
8 Ω

Connector
INPUT Jack

Dimensions
561 (W)x 335 (D)x 528 (H) mm
22-1/8 (W) x 13-3/16 (D) x 20-13/16 (H) inches

Weight
16.6 kg / 36 lbs 10 oz

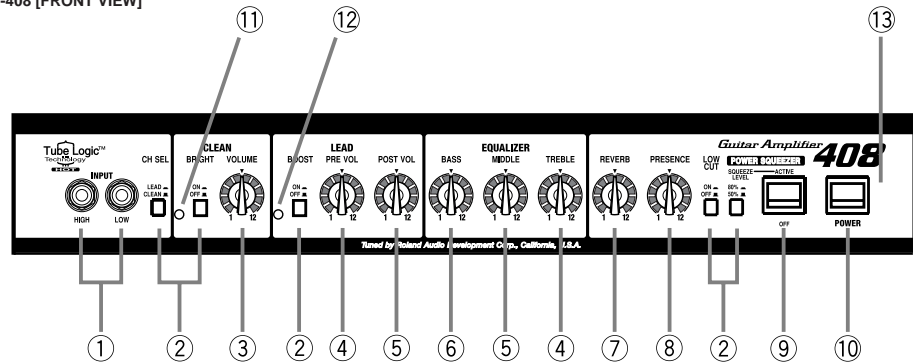
Accessories
Owner's Manual English (SS000105)
Owner's Manual Japanese (SS000106)
Connection Cable (EXT S/P CABLE) (SS000155)

LOCATION OF CONTROLS

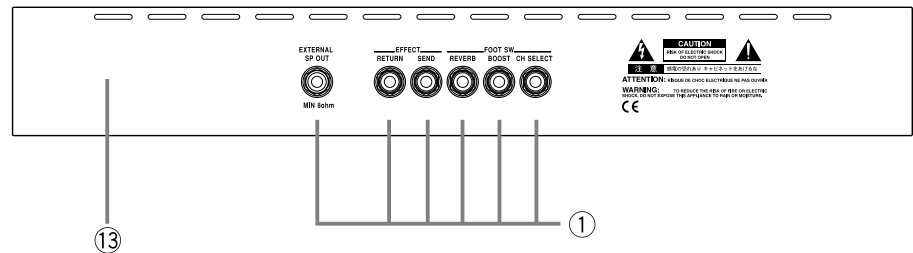
[PARTS]

No.	Part Cord	Part Name
①	SS000115	PHONE JACK MONO 12.5MM
	SS000055	NUT BK ABS JACK
②	SS000065	BUTTON P/NBB-18
	SS000020	PUSH SWITCH JDPA-21SA
③-⑧	SS000066	KNOB CNBB-09
③	SS000011	POTENTIOMETER A50k V/R 16F
④	SS000013	POTENTIOMETER B250k V/R 16F
⑤	SS000012	POTENTIOMETER B20k V/R 16F
⑥	SS000126	POTENTIOMETER A500k V/R 16F
⑦	SS000127	POTENTIOMETER B10k V/R 16F
⑧	SS000015	POTENTIOMETER C10k V/R 16F
⑨	SS000132	POWER SWITCH H8660VB
⑩	SS000021	AC SWITCH H8653VB
⑪	SS000123	LED KLG124
⑫	SS000122	LED KLR124
⑬	SS000141	PANEL (FRONT/REAR)

GC-408 [FRONT VIEW]



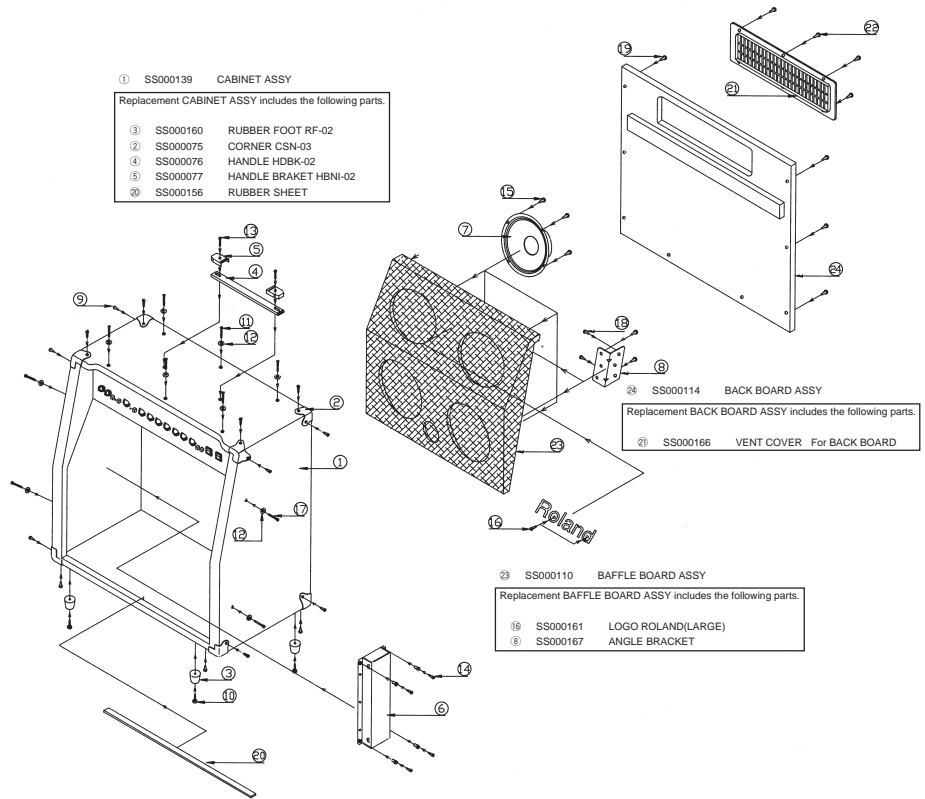
GC-408 [REAR VIEW]



GC-408 CABINET EXPLODED VIEW

[PARTS]

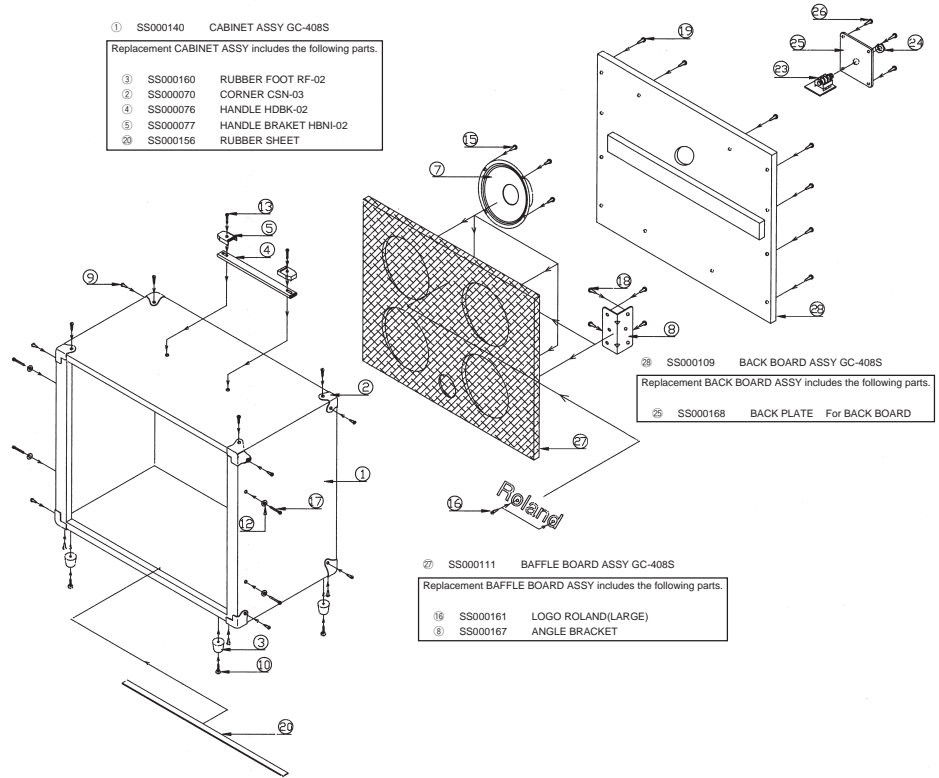
No.	Part Cord	Part Name
①	SS000139	CABINET ASSY
②	SS000070	CORNER CSN-03
③	SS000160	RUBBER FOOT RF-02
④	SS000076	HANDLE HDBK-02
⑤	SS000077	HANDLE BRACKET HBNI-02
⑥	17055028	REVERB UNIT 8DB2C1E
⑦	SS000135	SPEAKER GC-408/S
⑧	SS000167	ANGLE BRACKET
⑨	SS000050	TAPPING SCREW NI TH1 3.5x12
⑩	SS000145	TAPPING SCREW BK TH1 3.5x 18
⑪	SS000148	MACHINE SCREW BK OH 4x25
⑫	SS000054	WASHER BK NAVAL 4ø
⑬	SS000051	MACHINE SCREW NI OH M4x32
⑭	SS000047	TAPPING SCREW BK TH1 3.5x15
⑮	SS000147	MACHINE SCREW BK TH M4x20
⑯	SS000171	TAPPING SCREW BK FH1 2.6x10
⑰	SS000049	TAPPING SCREW BK OH1 3.5x45
⑱	SS000152	TAPPING SCREW NI FH1 3.5x15
⑲	SS000146	TAPPING SCREW BK TH1 3.5x35
⑳	SS000156	RUBBER SHEET
㉑	SS000166	VENT COVER
㉒	SS000150	TAPPING SCREW BK OH1 3.5x15
㉓	SS000110	BAFFLE BOARD ASSY
㉔	SS000114	BACK BOARD ASSY



GC-408S CABINET EXPLODED VIEW

[PARTS]

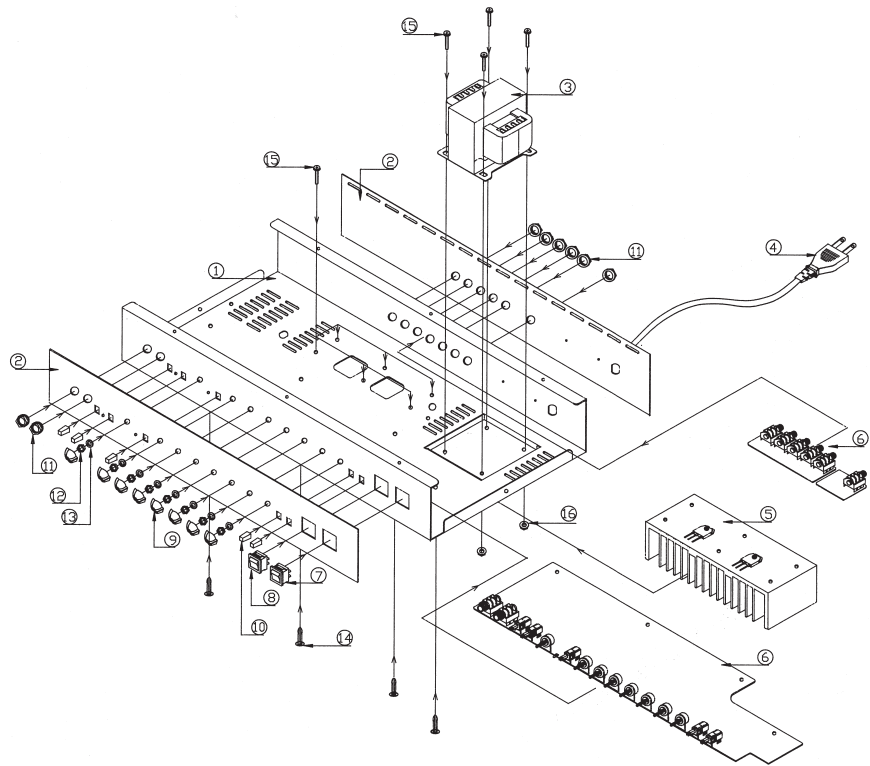
No.	Part Cord	Part Name
①	SS000140	CABINET ASSY
②	SS000070	CORNER CSN-03
③	SS000160	RUBBER FOOT RF-02
④	SS000076	HANDLE HDBK-02
⑤	SS000077	HANDLE BRACKET HBNI-02
⑥	*****	
⑦	SS000135	SPEAKER GC-408/S
⑧	SS000167	ANGLE BRACKET
⑨	SS000050	TAPPING SCREW NI TH1 3.5x12
⑩	SS000145	TAPPING SCREW BK TH1 3.5x 18
⑪	*****	
⑫	*****	
⑬	SS000051	MACHINE SCREW NI OH M4x32
⑭	*****	
⑮	SS000147	MACHINE SCREW BK TH M4x20
⑯	SS000171	TAPPING SCREW BK FH1 2.6x10
⑰	SS000049	TAPPING SCREW BK OH1 3.5x45
⑱	SS000152	TAPPING SCREW NI FH1 3.5x15
⑲	SS000146	TAPPING SCREW BK TH1 3.5x35
⑳	SS000156	RUBBER SHEET
㉑	*****	
㉒	*****	
㉓	SS000133	PCB ASSY
㉔	SS000055	NUT BK ABS JACK
㉕	SS000168	BLACK PLATE
㉖	SS000144	TAPPING SCREW BK TH1 3.5x10
㉗	SS000111	BAFFLE BOARD ASSY GC-408S
㉘	SS000109	BACK BOARD ASSY GC-408S



CHASSIS EXPLODED VIEW

[PARTS]

No.	Part Cord	Part Name
①	SS000112	CHASSIS (FOR 100V/230V/230VE/240V VERSION)
	SS000113	CHASSIS (FOR 117V VERSION)
②	SS000141	PANEL(Front / Rear)
③	SS000128	POWER TRANSFORMER GC-408J 100V
	SS000129	POWER TRANSFORMER GC-408U 117V
	SS000130	POWER TRANSFORMER GC-408ES 230V
	SS000131	POWER TRANSFORMER GC-408S 240V
④	SS000138	AC CORD 100V PHP209 VCTFK
	SS000040	AC CORD 117V KKP30A/SJT
	SS000035	AC CORD 230VD KKP4819R
	SS000036	AC CORD 230VE SRS.III
	SS000022	AC CORD 240V KKP550
⑤	SS000162	HEAT SINK HS-15
⑥	SS000133	PCB ASSY
⑦	SS000021	AC SWITCH H8653VB
⑧	SS000132	POWER SWITCH H8660VB
⑨	SS000066	KNOB CNBB-09
⑩	SS000065	BUTTON PNB8-18
⑪	SS000055	NUT BK ABS JACK
⑫	SS000060	NUT NA 6N-M7
⑬	SS000058	WASHER NA PLATE 7φ
⑭	SS000158	SUPPORT DABS 16R
⑮	SS000053	MACHINE SCREW NA PHSW M4x10
⑯	SS000059	NUT NA FURANCHI M4

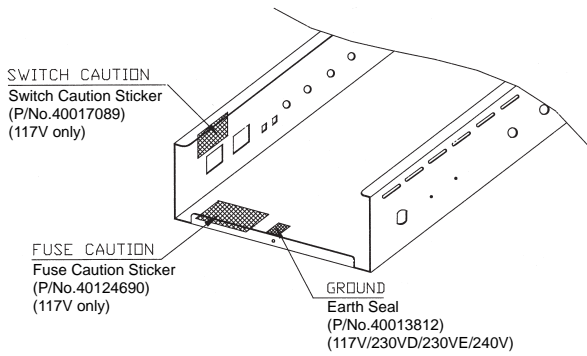


NOTICE

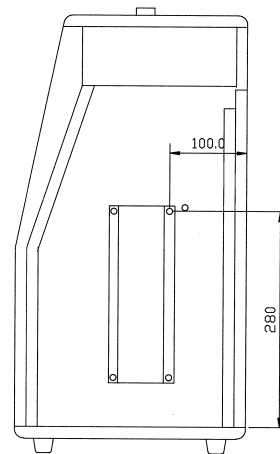
Some basic tips to keep in mind when you replace a component

1. Caution labels
When you replace the chassis, place caution labels to the replacement chassis.
Please refer to the following diagrams.

2. Reverb unit
Reverb unit is placed to cabinet directly by wood screw.
When you place a reverb unit to the new replacement cabinet, lock it in specified position.
Please refer to the following diagrams.



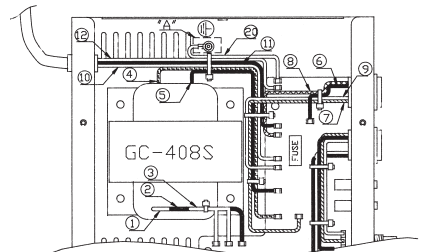
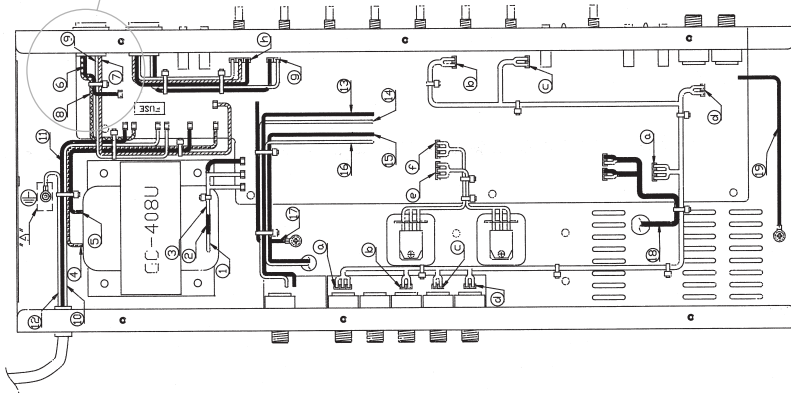
[SIDE VIEW



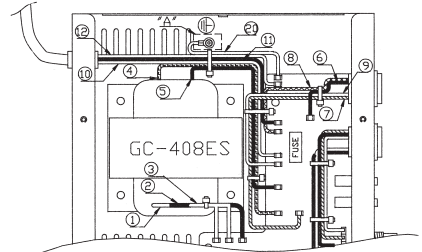
WIRING DIAGRAM

IMPORTANT NOTE ! (For 117V version)
 When you replace the AC Switch for 117V version, basic safety precautions should always be followed including the following.
 (Refer to fig 1.)

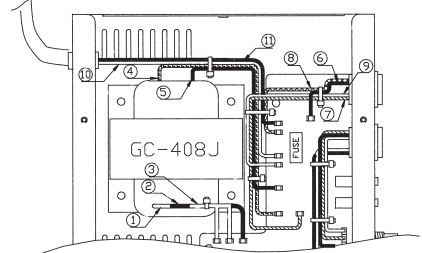
NOTE : Mounting of AC Switch
 The switch cover must be secured to the ac switch by nylon tie.
 The gap between Metal Chassis and Switch Cover must be filled up with glue with flammability of 94V-0.
 Fig.1
 AC Switch
 Switch Cover
 Secured by nylon tie tightly
 Glue : 1603HFR (Flame Class: 94V-0) HAN NONG POLYMER CO.LTD.
 P/No. SS000107



((FOR 240V))



((FOR 230VE/VD))

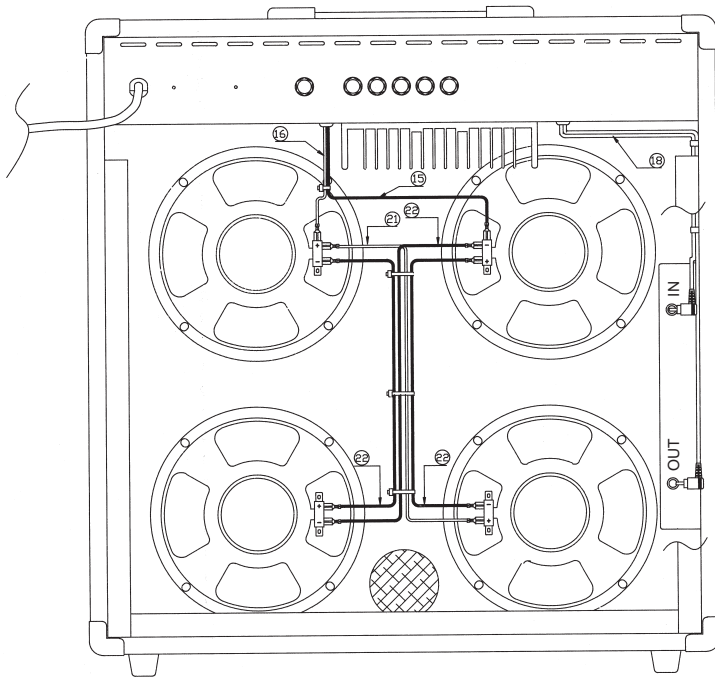


((FOR 100V))

((FOR 117V))

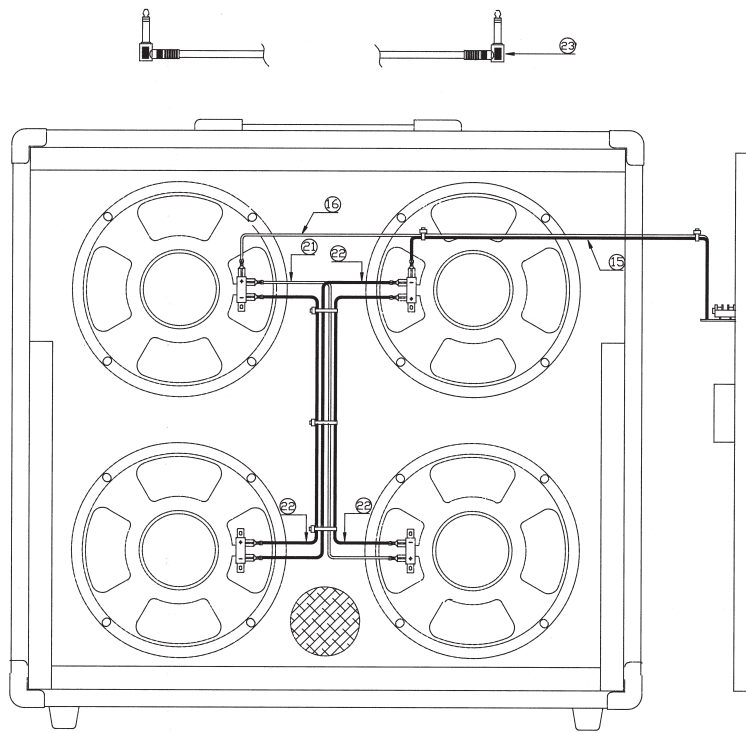
WIRING DIAGRAM

408 SPEAKER

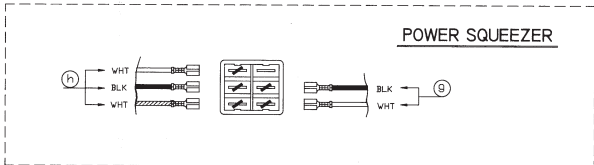
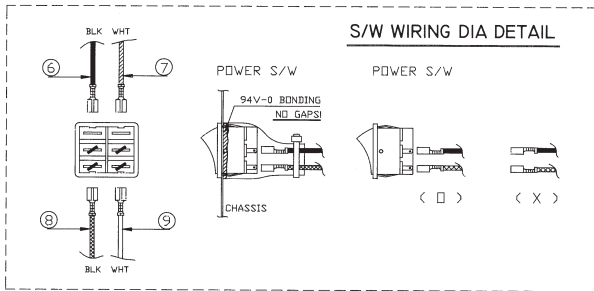
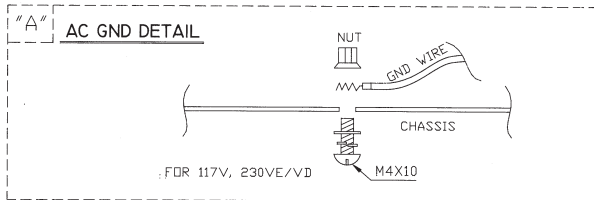


WIRING DIAGRAM

408S SPEAKER



WIRING DIAGRAM



WIRING DIAGRAM PARTS LIST

NOTE: The parts marked Δ have safety-related characteristics.
Use only listed parts for replacement.

- ① ***** TRANSFORMER SEC.LEAD WIRE (RED)
- ② ***** TRANSFORMER SEC.LEAD WIRE (BLK)
- ③ ***** TRANSFORMER SEC.LEAD WIRE (RED)
- ④ ***** TRANSFORMER PRI LEAD WIRE (WHT)
- ⑤ ***** TRANSFORMER PRI LEAD WIRE (BLK)
- Δ ⑥ SS000177 POWER LINE WIRE (BLK)
- Δ ⑦ SS000178 POWER LINE WIRE 150MM (WHT)
- Δ ⑧ SS000177 POWER LINE WIRE (BLK)
- Δ ⑨ SS000180 POWER LINE WIRE 100MM (WHT)

AC CORD			
	100V	117V	230VE/240VD
10	WHITE	WHITE	BLUE
11	BLACK	BLACK	BROWN
12	none	GREEN	YLW/GRN

- 13 SS000181 EXTERNAL SPEAKER WIRE (BLK)
- 14 SS000182 EXTERNAL SPEAKER WIRE (WHT)
- 15 SS000183 SPEAKER WIRE (BLK)
- 16 SS000198 SPEAKER WIRE (WHT)
- 17 SS000186 GND CABLE (BLK)
- 19 SS000080 REVERB CABLE
- 19 SS000186 GND CABLE (BLK)
- Δ 20 SS000187 LINE GND CABLE (YLW/GLY)230/240V ONLY
- 21 SS000196 SPEAKER SYSTEM WIRE (WHT)
- 22 SS000197 SPEAKER SYSTEM WIRE (BLK)
- 23 SS000155 EXT S/P CABLE L-300MM(BLK)
- Δ 24 SS000188 SEND/RETURN WIRE (WHT/BRU/YLW)
- 25 SS000189 REVERB WIRE (YLW/BLU)
- 26 SS000190 BOOST WIRE (YLW/BLU)
- 27 SS000191 C/H SELECT WIRE (WHT/BLU)
- 28 SS000192 POWER TR WIRE (RED/WHT/BLU)
- 29 SS000192 POWER TR WIRE (RED/WHT/BLU)
- Δ 30 SS000163 POWER SQUEEZER WIRE 2pin
- Δ 31 SS000164 POWER SQUEEZER WIRE 3pin

GC-408 PARTS LIST

<p>SAFETY PRECAUTIONS-2</p> <p>The parts marked Δ have safety-related characteristics. Use only listed parts for replacement.</p>	<p>CONSIDERATIONS ON PARTS ORDERING</p> <p>When ordering any parts listed in the parts list, please specify the following items in the order sheet.</p> <table border="1"> <thead> <tr> <th>QTY</th> <th>PART NUMBER</th> <th>DESCRIPTION</th> <th>MODEL NUMBER</th> </tr> </thead> <tbody> <tr> <td>Ex. 10</td> <td>225762H</td> <td>Sharp Key</td> <td>C-3050</td> </tr> <tr> <td>15</td> <td>2247017300</td> <td>Knob (orange)</td> <td>DAC-15D</td> </tr> </tbody> </table> <p>Failure to completely fill the above items with correct number and description will result in delayed or even undelivered replacement.</p>	QTY	PART NUMBER	DESCRIPTION	MODEL NUMBER	Ex. 10	225762H	Sharp Key	C-3050	15	2247017300	Knob (orange)	DAC-15D
QTY	PART NUMBER	DESCRIPTION	MODEL NUMBER										
Ex. 10	225762H	Sharp Key	C-3050										
15	2247017300	Knob (orange)	DAC-15D										

NOTE1: The parts marked # are new.
NOTE2: The parts marked Δ have safety-related characteristics. Use only listed parts for replacement.

CABINET			
#	SS000139	CABINET ASSY	5211200000
NOTE1: Replacement CABINET ASSY includes the following parts.			
#	SS000160	RUBBER FOOT RF-02	60381030001
#	SS000075	CORNER CSN-03	80420200001
#	SS000076	HANDLE HDBK-02	60513110001
#	SS000077	HANDLE BRACKET HBN1-02	60529300001
#	SS000156	RUBBER SHEET	60531510000
#	SS000110	BAFFLE BOARD ASSY	
NOTE2: Replacement BAFFLE BOARD ASSY includes the following parts.			
#	SS000161	LOGO ROLAND(LARGE)	60391310101
#	SS000167	ANGLE BRACKET	60120100000
#	SS000114	BACK BOARD ASSY	
NOTE3: Replacement BACK BOARD ASSY includes the following parts.			
#	SS000186	VENT COVER	90060300001 For BACK BOARD
CHASSIS			
#	SS000112	CHASSIS(FOR 100V/230V/230V/E/240V VERSION)	
# Δ	SS000113	CHASSIS(FOR 117V VERSION)	
#	SS000141	PANEL	5311200000 for Front,Back
KNOB, BUTTON			
#	SS000068	KNOB CNBB-09	60315303101
#	SS000065	BUTTON PNB8-18	60312303002
SWITCH			
#	SS000020	PUSH SWITCH J0PA-215A	30324020021 S5.6.8.SW4.7
#	SS000132	POWER SWITCH H6660VB	30514048660 S2
# Δ	SS000021	AC SWITCH H6653VB	30514028653 SW1
JACK, SOCKET			
#	SS000115	PHONE JACK MONO 12.5MM	JK1-7.9
SPEAKER			
# Δ	SS000135	SPEAKER GC-408/S	40160908034
REVERB UNIT			
#	1765028	REVERB UNIT 80B2C1E	
PWB ASSY			
#	SS000133	PCB ASSY	33030040810
MAIN BOARD / EFFECT LOOP JACK BOARD / PHONE JACK BOARD			
NOTE2: Replacement PCB ASSY does not include fuse. When you replace the PCB ASSY, be sure to order specific fuses separately (refer to TABLE A)			
NOTE1: Replacement PCB ASSY includes the following parts.			
TABLE A			
#	100V/117V	51S 2.5A/125V (440S2500S20)PNo. SS000137	
#	230V/240V	50T T1.25A/250V(44011200S20)PNo. SS000136	
IC			
#	15189129	IC OP AMP TL072CP	IC1-5
TRANSISTOR			
#	SS000003	TRANSISTOR KT41266	21211266201
#	SS000004	TRANSISTOR KTC3188	21233188200
#	15119130	TRANSISTOR 2SB640C	Q10,14,102,109
# Δ	15119604	TRANSISTOR 2SB640AC	Q13,16,17,18,20,22,24,101
# Δ	15129604	TRANSISTOR 2SB664AC	Q1-4,15,25,100
# Δ	SS000117	TRANSISTOR 2SB116E	Q8,12,21
# Δ	SS000118	TRANSISTOR 2SD1046E	Q7,9,11
#	15101926	DIODE 1SS133	D1-5,8-14,18,26,27,28,100
# Δ	15145079	ZENER DIODE MTZJ2.0B	D22,101,102
# Δ	SS000108	ZENER DIODE 4.7V	D16,17
# Δ	SS000116	1KV ZENER DIODE 1NF45A	D15,18,20
# Δ	SS000119	BRIDGE DIODE KBPC60M	D21
#	SS000122	LED KLR124	D7
#	SS000123	LED KLG124	D6

RESISTOR			
# Δ	SS000125	RESISTOR RS TYPE 220ohm/ZW	26222000506 R19,R9
# Δ	SS000124	CEM RES. RWCC TYPE L1.30ohm/ZW	20030000906 R56-57
POTENTIOMETER			
#	SS000011	POT 450K V/R 16F	27311221404 VR2
#	SS000126	POT 450K V/R 16F	27311221405 VR6
#	SS000127	POT 810K V/R 16F	27311221404 VR6
#	SS000128	POT 810K V/R 16F	27311221405 VR6
#	SS000013	POT 825K V/R 16F	27311222255 VR1,7
#	SS000015	POT C10K V/R 16F	27311221404 VR6
CAPACITOR			
# Δ	SS000120	CAP.ELE 2200uF/50V	22322605000 C18,70
# Δ	SS000121	CAP.YE-472M 0.0047uF/250V	22847202500 C4,50
FUSE/FUSE HOLDER			
# Δ	SS000137	FUSE 100V/117V 51S 2.5A/125V	440S2500S20
# Δ	SS000136	FUSE 230V/240V 50T T1.25A/250V	4401120S20
# Δ	SS000134	FUSE HOLDER 25MM	37520536211
TERMINAL			
#	SS000084	TERMINAL 1870.5T	90001870082 CH-GND,L-GND,L-HOT,L-COLD, P-SW,T-HOT,T-COLD
WIRING CABLE			
#	SS000080	REVERB CABLE	70125430001 For LOOP
# Δ	SS000163	POWER SQUEEZER WIRE 2pin	70139602001 For REVERB UNIT
# Δ	SS000177	POWER LINE WIRE (BLK)	70139603001 For CABINET FOOT
#	SS000178	POWER LINE WIRE (WHIT)	
# Δ	SS000180	POWER LINE WIRE 100MM (WHIT)	
#	SS000181	EXTERNAL SPEAKER WIRE (BLK)	
#	SS000182	EXTERNAL SPEAKER WIRE (WHIT)	
#	SS000183	SPEAKER WIRE (BLK)	
#	SS000188	GND CABLE (BLK)	
#	SS000187	LINE GND CABLE (YLW/GLY/230/240V ONLY)	
#	SS000188	SEND/RETRN WIRE (WHIT/BRU/YLW)	
#	SS000190	BOOST WIRE (L/W/BLU)	
#	SS000191	CH SELECT WIRE (WHIT/BLU)	
#	SS000192	POWER TR WIRE (RED/WHIT/BLU)	
#	SS000198	SPEAKER WIRE (WHIT)	
TRANSFORMER			
# Δ	SS000128	TRANSFORMER GC-408J 100V	28618580012
# Δ	SS000129	TRANSFORMER GC-408J 117V	28658580012
# Δ	SS000130	TRANSFORMER GC-408S 230V	28648580012
# Δ	SS000131	TRANSFORMER GC-408S 240V	28658580012
AC CORD			
# Δ	SS000138	AC CORD 100V PHP209 VCTFK	51106350009
#	SS000034	AC CORD 117V KKP30A/SJT	51106350003
#	SS000035	AC CORD 230V KKP481SR	51106350005
#	SS000036	AC CORD 230VE SPS,III	51106350008
#	SS000022	AC CORD 230V KKP60	51106350004
SCREW			
#	SS000050	TAPPING SCREW NI TH1 3.5x12	60000001402 For CORNER
#	SS000171	TAPPING SCREW BK PH1 2.8x10	60000000202 For LOOP
#	SS000047	TAPPING SCREW BK TH1 3.5x15	60000000404 For WIRE CLAMP
#	SS000145	TAPPING SCREW BK TH1 3.5x16	60000000405 For RUBBER FOOT
#	SS000151	TAPPING SCREW BK TH1 3.5x20	60041500205 For REVERB UNIT
#	SS000146	TAPPING SCREW BK TH1 3.5x25	60000000411 For BACK BOARD
#	SS000150	TAPPING SCREW BK OH1 3.5x15	60011501241 For VENT COVER
#	SS000048	TAPPING SCREW BK OH1 3.5x45	60000000410 For CABINET SIDE
#	SS000152	TAPPING SCREW NI FH1 3.5x15	60052501241 For ANGLE BRACKET
#	SS000147	MACHINE SCREW BK TH M4x20	60000000203 For SPEAKER
#	SS000148	MACHINE SCREW BK OH M4x25	60000000504 For CHASSIS
#	SS000051	MACHINE SCREW NI OH M4x2	60000000107 For HANDLE BRACKET
#	SS000052	MACHINE SCREW NA PHW M3x10	60000000305 For TR
#	SS000053	MACHINE SCREW NA PHW M4x10	60000000302 For HEAT SINK,GND,TRANS
#	SS000054	WASHER BK NAVE1 4 FAI	60000000010 For CABINET TOP & SIDE
#	SS000056	WASHER NA CLV1 7 FAI	60000000021 For VR
#	SS000055	NUT BK ABS JACK	60000000602 For PHONE JACK
#	SS000149	NUT NI M4	60000000600 For CABINET BAFFLE BOARD & TOP BOARD
#	SS000059	NUT NA FURANCH M4	60000000350 For TRANS,GND
#	SS000060	NUT NA BK-N7	60000000602 For VR
PACKING CASE			
#	SS000142	OUTER PACKING	55112000000
MISCELLANEOUS			
#	SS000067	RUBBER BUSH BR-01	60320000001 For SPEAKER CABLE
#	SS000158	SUPPORT DABS 16R	60351600000 For BAFFLE BOARD
#	SS000069	STRAIN RELIEF SRF16	60370000002 For REVERB CORD
# Δ	SS000070	STRAIN RELIEF SRF18	60370000003 For AC CORD 100,230E,230D,240V
#	SS000071	STRAIN RELIEF SRF16	60370000002 For AC CORD 117V
# Δ	SS000162	HEAT SINK HS-15	60610400015 For OS,06
# Δ	SS000169	COUPLER COVER 201201	60001500001 For 117V AC SWITCH
# Δ	SS000107	CLUE 180CFR HAN NONG POLYMER CO LTD	60362521201 For 117V AC SWITCH
#	40174669	FUSE CAUTION STICKER	
#	4017089	SWITCH CAUTION STICKER	
#	4013812	EARTH SEAL	
ACCESSORIES(Standard)			
#	SS000103	OWNER'S MANUAL ENGLISH	
#	SS000104	OWNER'S MANUAL JAPANESE	

GC-408S PARTS LIST

<p>SAFETY PRECAUTIONS-2</p> <p>The parts marked ▲ have safety-related characteristics. Use only listed parts for replacement.</p>	<p>CONSIDERATIONS ON PARTS ORDERING</p> <p>When ordering any parts listed in the parts list, please specify the following items in the order sheet.</p> <table border="1"> <thead> <tr> <th>QTY</th> <th>PART NUMBER</th> <th>DESCRIPTION</th> <th>MODEL NUMBER</th> </tr> </thead> <tbody> <tr> <td>Ex. 10</td> <td>225762H</td> <td>Sharp Key</td> <td>C-3050</td> </tr> <tr> <td>15</td> <td>2247017300</td> <td>Knob (orange)</td> <td>DAC-15D</td> </tr> </tbody> </table> <p>Failure to completely fill the above items with correct number and description will result in delayed or even undelivered replacement.</p>	QTY	PART NUMBER	DESCRIPTION	MODEL NUMBER	Ex. 10	225762H	Sharp Key	C-3050	15	2247017300	Knob (orange)	DAC-15D
QTY	PART NUMBER	DESCRIPTION	MODEL NUMBER										
Ex. 10	225762H	Sharp Key	C-3050										
15	2247017300	Knob (orange)	DAC-15D										

NOTE1: The parts marked # are new.
NOTE2: The parts marked # have safety-related characteristics. Use only listed parts for replacement.

CABINET			
#	SS00140	CABINET ASSY GC-408S	52114000000
NOTE1: Replacement CABINET ASSY includes the following parts			
#	SS00160	RUBBER FOOT RF-G2	60381030001
#	SS00070	CORNER CSN-G3	80420220001
#	SS00076	HANDLE HDBK-G2	80513110001
#	SS00077	HANDLE BRACKET HBNI-G2	80523950001
#	SS00156	RUBBER SHEET	80531510000
#	SS00011	BAFFLE BOARD ASSY GC-408S	
NOTE2: Replacement BAFFLE BOARD ASSY includes the following parts.			
#	SS000161	LOGO (ROLAND/LARGE)	60391310101
#	SS000167	ANGLE BRACKET	90120100000
#	SS000109	BACK BOARD ASSY	
NOTE3: Replacement BACK BOARD includes the following parts.			
#	SS000168	BACK PLATE	90140000001 For BACK BOARD
JACK			
#	SS000115	PHONE JACK MONO 12.5MM	JK10
SPEAKER			
#	▲ SS000135	SPEAKER GC-408/S	40160908034
WIRING CABLE			
#	SS000183	SPEAKER WIRE (BLK)	
#	SS000198	SPEAKER SYSTEM WIRE (WHT)	
#	SS000197	SPEAKER SYSTEM WIRE (BLK)	
#	SS000196	SPEAKER WIRE (WHT)	
SCREW			
#	SS000050	TAPPING SCREW N TH1 3.5x12	60000001402 For CORNER
#	SS000171	TAPPING SCREW BK FH1 2.6x10	60000002022 For LOGO
#	SS000144	TAPPING SCREW BK TH1 3.5x10	60000000411 For BACK PLATE
#	SS000047	TAPPING SCREW BK TH1 3.5x15	60000000404 For WIRE CLAMP
#	SS000145	TAPPING SCREW BK TH1 3.5x18	60000000405 For RUBBER FOOT
#	SS000088	TAPPING SCREW BK PH1 3.5x18	60000000410 For CABINET SIDE
#	SS000146	TAPPING SCREW BK TH1 3.5x30	60000000411 For BACK BOARD
#	SS000152	TAPPING SCREW N TH1 3.5x15	6002501101 For ANGLE BRACKET
#	SS000147	MACHINE SCREW BK TH M4x20	60000004503 For SPEAKER
#	SS000051	MACHINE SCREW N OH M4x32	6000001507 For HANDLE BRACKET
#	SS000054	WASHER BK NAVE1 4 FAI	60000099010 For CABINET TOP & SIDE
#	SS000055	NUT BK ASS JACK	60000099062 For PHONE JACK
#	SS000149	BK T NUT M4	60000099090 For CABINET BAFFLE BOARD
PACKING CASE			
#	SS000143	OUTER PACKING	55114000000
MISCELLANEOUS			
#	SS000156	RUBBER SHEET	60331510000 For BAFFLE BOARD
ACCESSORIES(Standard)			
#	SS000105	OWNER'S MANUAL ENGLISH	
#	SS000106	OWNER'S MANUAL JAPANESE	
#	SS000155	EXT S/P CABLE GC-408S	60207004082

1 2 3 4 5 6 7 8 9 10 11 12 13 14 15 16 17 18 19 20 21 22 23 24 25 26 27 28

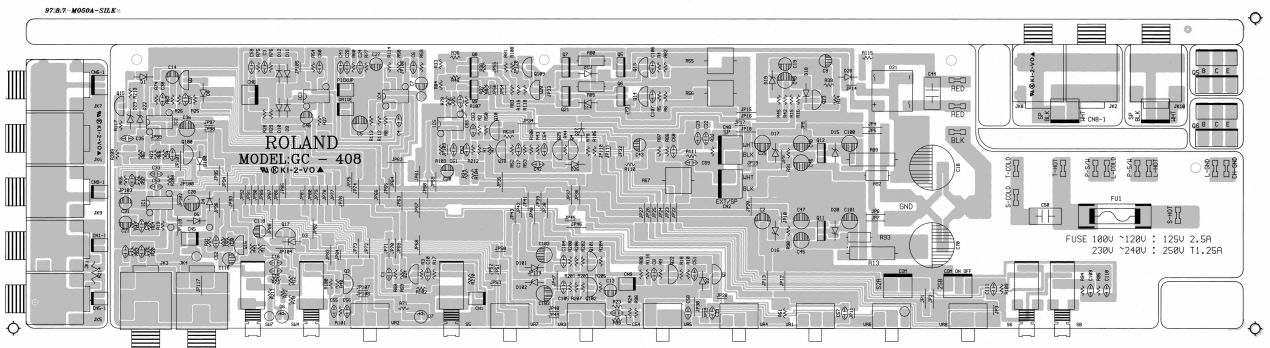
A **CIRCUIT BOARD**

CHANGE INFORMATION

The PCB ASSY has revised from the 2nd lot.
There is no difference in circuit structure.
(The following diagram is effective for 1st lot.
Until Serial No.ZK21099.)

SERVICE RESPONSE

Unnecessary since the circuit structure
of PCB ASSY has not been changed.



B
C
D
E
F
G
H
I
J
K
L
M
N
O
P
Q
R
S
T
U

1 2 3 4 5 6 7 8 9 10 11 12 13 14 15 16 17 18 19 20 21 22 23 24 25 26 27 28

A CIRCUIT DIAGRAM

