

Raymarine®

E | S E R I E S
W I D E S C R E E N
with hybridtouch™





E | S E R I E S

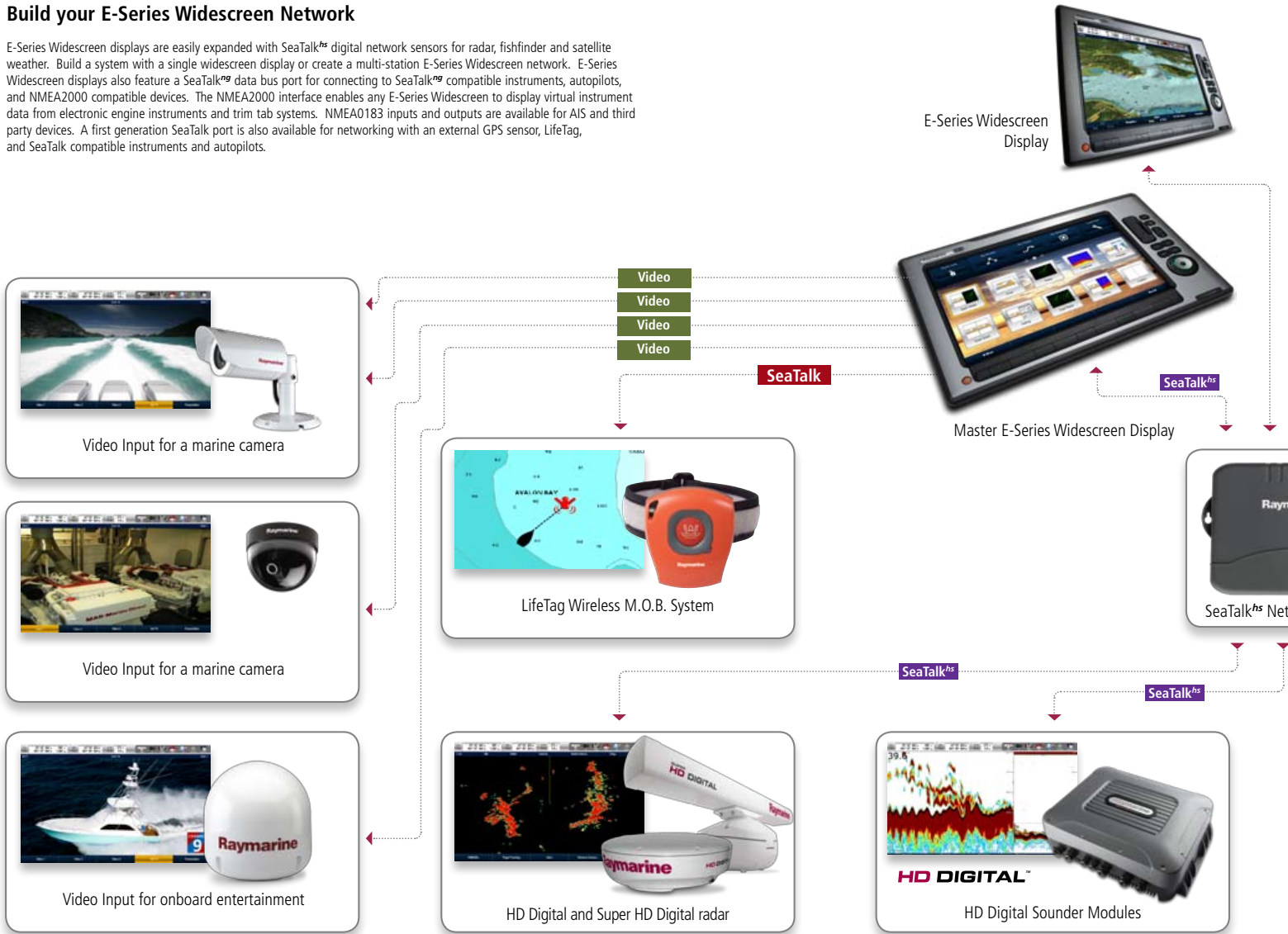
W I D E S C R E E N

E-Series Widescreen delivers elegant simplicity, bold new styling and unprecedented choice. Choose touch screen or keypad operation with E-Series Widescreen's innovative HybridTouch™ technology. A brand new user interface and intuitive home screen makes navigation simple, fast and easy.



Build your E-Series Widescreen Network

E-Series Widescreen displays are easily expanded with SeaTalk^{hs} digital network sensors for radar, fishfinder and satellite weather. Build a system with a single widescreen display or create a multi-station E-Series Widescreen network. E-Series Widescreen displays also feature a SeaTalk^{ng} data bus port for connecting to SeaTalk^{ng} compatible instruments, autopilots, and NMEA2000 compatible devices. The NMEA2000 interface enables any E-Series Widescreen to display virtual instrument data from electronic engine instruments and trim tab systems. NMEA0183 inputs and outputs are available for AIS and third party devices. A first generation SeaTalk port is also available for networking with an external GPS sensor, LifeTag, and SeaTalk compatible instruments and autopilots.





* SeaTalk^{hs} switch only required when utilizing more than two digital sensors

E | S E R I E S

W I D E S C R E E N



E90W 9" Multifunction Display

E140W 14.1" Multifunction Display

E120W 12.1" Multifunction Display

HYBRIDTOUCH™

Engineered for the marine environment, the HybridTouch™ touch screen user interface offers the convenience of touch screen and the confidence of full keypad control in rough seas.

BRAND NEW INTERFACE

A completely new user interface designed around an easy-to-use home screen simplifies application selection and gives you the power to customize your navigation experience with a few simple touches.

PRELOADED READY-TO-NAVIGATE NAVIONICS CHARTS

E-Series Widescreen displays are preloaded with ready-to-navigate charts for basic navigation. Step up to Navionics Platinum+ for enhanced chart detail and data layers.

NAVIONICS PLATINUM+ WITH TURBOVIEW

Experience total immersion in the multidimensional world of Navionics Platinum+™ charts with TurboView. Dive to depths and fly through your favorite destinations while enjoying a seamless 3D navigation experience using Platinum+ charts.

BIRD MODE

HD Digital Bird Mode automatically optimizes the radar display to track sea bird targets at distance, giving anglers the long range intelligence they need to find schools of fish.

SIMPLIFIED VOYAGE PLANNING

Create waypoints and routes with a few simple touches. E-Series Widescreen's on-screen keyboard makes naming and organizing your data simple.

hybridtouch™

Designed for the marine environment. The convenience of touch screen and the confidence of keypad control in rough seas.



Intuitive touch screen operation simplifies common tasks



Touch Lock™ enables total button-based operation in extreme conditions



Keypad provides full operational control in rough seas



High Definition Display Technology

High resolution sunlight viewable widescreens deliver vibrant color and maximum visibility.



- E120W and E140W feature WXGA screen resolutions (1280 x 800) and the E90W features WVGA resolution (800 x 480)
- Optically bonded LCD display technology dramatically improves contrast and improves readability
- Ruggedized glass touch screen technology
- Smooth, easy glide surface offers durable scratch resistance
- Superior sensitivity and accuracy minimizes false inputs from rain, spray or contaminants



Intuitive softkey menus provide easy access to essential navigation functions



Unicontrol™ lets you quickly rotate and select menus and features

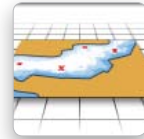
Brand New User Interface

A completely new user interface designed around the easy-to-use Home Screen simplifies application selection and gives captains the power to customize their navigation experience with a few simple touches.

Intuitive home screen greets the captain with an easy-to-understand menu of applications



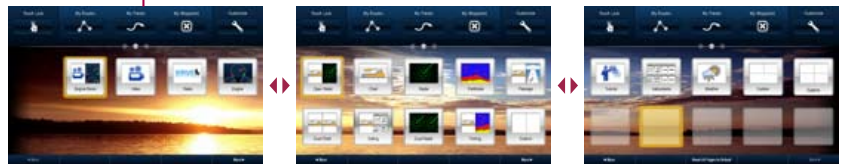
Direct access to stored waypoints, routes and tracks



Bold, easy-to-read icons make learning and exploring easy



Easily personalize the home screen with a few simple touches



Preloaded Navionics Charts

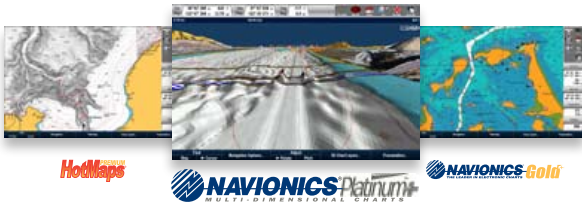
E-Series Widescreen displays are preloaded with ready-to-navigate Navionics charts of the coastal U.S. Preloaded charts include: aids to navigation, depth contours, spot soundings, depth shading and isolated hazards.



Navionics Platinum+ with TurboView™ Technology

Experience total immersion in the multidimensional world of Navionics Platinum+™ charts with TurboView technology. Dive to depths and fly through your favorite destinations while enjoying a fast and seamless 3D navigation experience using Platinum+ charts.

- Seamless, fluid pan and zoom of 3D charts
- Depth and elevation shadowing
- High resolution top-down photo overlay
- 3-D bathymetric views and Navionics exclusive high-definition fishing detail
- Panoramic port photos
- Selectable color shaded contours
- Full Seamless & Intelligent Clarity Technology™
- Complete Geo-referenced Coast Pilot Book
- Points of Interest including enhanced port services, hazards, wrecks and more!





High Resolution Aerial Overlay

Enjoy stunning high resolution aerial overlay in both 2D and 3D navigation modes. Navionics Platinum+ charts feature built in imagery with resolutions as high as 1/4 meter per pixel. E-Series Widescreen also features aerial image overlay transparency allowing you to blend in just the right amount of detail.



Panoramic Port Photographs

Cruising captains and navigators will appreciate Navionics' Platinum+ panoramic port photos. Presented in stunning 1024 x 768 high resolution, they offer you a bird's eye view of marinas, docks, harbors, inlets and other prominent marine features.



Bathymetric Fishing Charts

Navionics' exclusive high resolution bathymetric charts give anglers the advantage with super detailed depth contours, spot soundings and an extensive database of underwater wrecks and obstructions. E-Series Widescreen can also display charts side-by-side, enabling simultaneous viewing of both navigation and fishing charts in 2D or 3D mode. With E-Series Widescreen, the choices are all yours.



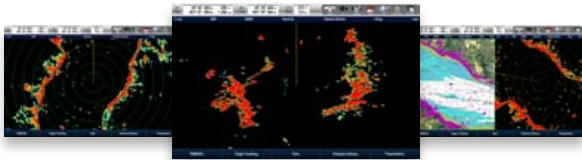
Integrated Cruising Guide, Tides and Currents

Navionics Platinum+ charts contain volumes of valuable navigation data from the NOAA Coast Pilot books. Information like channel and wharf descriptions, anchorages and bridge clearances are all instantly available and geo-referenced to your boat's current position. Tide and current data is also available with the touch of a button. View real-time tides and current while out on the water, or view predictions for any date when planning a future trip.

Target Fish with Radar

Experienced anglers look to the horizon for seabirds above schools of fish. Now Raymarine HD Digital radar technology does the same with all new "Bird Mode" radar tracking. Bird Mode automatically optimizes the radar scanner to track small sea bird targets at distance, giving anglers the long range intelligence they need to find fish.

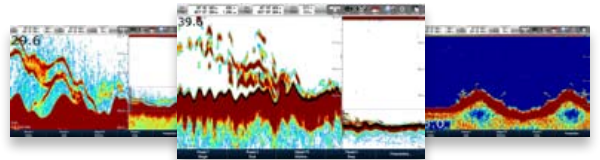
Check our website for radar antenna updates to support Bird Mode



The Angler's Advantage

E-Series Widescreen delivers unmatched HD Digital sounder technology with up to 3 Kilowatts of output power. Network with an HD Digital sounder module and access fishfinder at the helm or in the tower.

- Choose 600 Watt DSM30, the 1000 Watt DSM300 or the 3000 Watt DSM400 HD Digital Sounder module
- Fully automatic, hands free operation thanks to Raymarine's patented HD Digital technology
- Digital receiver technology provides a dramatically clearer picture of bottom structure and fish targets



HD DIGITAL™

SIRIUS Marine Weather and Satellite Radio

Track storms, receive weather alerts, view animated weather radar, and enjoy over 100 channels of commercial free music using SIRIUS Marine Weather and Satellite Radio Service. Plan your next fishing trip using highly detailed sea surface temperature data or plan your next cruise with up-to-the-minute NOWRAD radar overlaid directly on your chartplotter. Requires optional SeaTalk^{hs} compatible SR100 receiver and subscription.



AIS Integration

AIS (Automatic Identification System) enables the wireless exchange of navigation status between vessels and shore-side traffic monitoring centers. Using the optional AIS250 receiver or the AIS500 transceiver, E-Series Widescreen graphically overlays AIS targets in both chartplotter and radar modes.



Optional AIS500 Transceiver



Video at your Command

Enjoy up to four video input sources like Satellite TV, marine cameras or DVD entertainment. HD video output enables remote connections to LCD monitors and TV.



Autopilot Control

Using the SeaTalk^{ng} data bus, E-Series Widescreen can activate and control Raymarine SmartPilot X-Series autopilots directly from the chartplotter interface.



Engine Instruments

Monitor onboard vital systems with NMEA 2000 engine integration. E-Series monitors engines, sensors, generators, trim tabs and more.



* Shown with optional trunion mount

E-Series Widescreen Ordering Information



E-SERIES WIDESCREEN MULTIFUNCTION DISPLAYS

Description	Part number
E90W 9" Multifunction Display with U.S. Coastal Charts	E62220-US
E90W 9" Multifunction with ROW charts (S. America, Australia, NZ, Asia)	E62220-RW
E90W 9" Multifunction with ROW charts (Europe)	E62220-EU
E120W 12.1" Multifunction Display with U.S. Coastal Charts	E62223-US
E120W 12.1" Multifunction with ROW charts (S. America, Australia, NZ, Asia)	E62223-RW
E120W 12.1" Multifunction with ROW charts (Europe)	E62223-EU
E140W 14.1" Multifunction Display with U.S. Coastal Charts	E62226-US
E140W 14.1" Multifunction with ROW charts (S. America, Australia, NZ, Asia)	E62226-RW
E140W 14.1" Multifunction with ROW charts (Europe)	E62226-EU

HD DIGITAL RADOMES

Digital radar cable sold separately.

Description	Part number
RD418HD 4kW HD Digital Radome	E92142
RD424HD 4kW HD Digital Radome	E92143

HD DIGITAL AND SUPER HD DIGITAL RADARS

Each includes pedestal, array, VCM100 voltage convertor module and 15 meter cable

Description	Part number
RA1048HD - 4kW 48" HD Digital Open Array	T52071
RA1072HD - 4kW 72" HD Digital Open Array	T52074
RA3048HD - 12kW 48" HD Digital Open Array	T92168
RA3072HD - 12kW 72" HD Digital Open Array	T92169
RA1048SHD - 4kW 48" SUPER HD Digital Open Array	T52085
RA1072SHD - 4kW 72" SUPER HD Digital Open Array	T52087
RA3048SHD - 12kW 48" SUPER HD Digital Open Array	T52086
RA3072SHD - 12kW 72" SUPER HD Digital Open Array	T52088
10M Digital Radar Cable	A55077D
15M Digital Radar Cable	A55078D
25M Digital Radar Cable	A55079D

HD DIGITAL SOUNDER MODULES

Description	Part number
DSM30 Digital Sounder Module	E63074
DSM300 600W/1kW Digital Sounder Module	E63069G
DSM400 3000 Watt Digital Sounder Module	E63072

TRANSDUCERS

Choose transom, in-hull or thru-hull transducers. Go to raymarine.com to see the full selection of digital sounder module transducer options



GPS/SIRIUS/AIS RECEIVERS

Description	Part number
Raystar 125 GPS Sensor	E32042
SR100 SIRIUS Weather Service Receiver	E03008
AIS250 Receiver Module	E03015
AIS500 Class B Transceiver	E62235
Smart Heading Compass Sensor	E12102



MARINE CAMERAS

Description	Part number
CAM50 Dome Camera (NTSC)	E03016
CAM50 Reverse Image Dome Camera (NTSC)	E03018
CAM100 Day/Night Marine Camera (NTSC)	E03007
CAM100 Day/Night Reverse Image Marine Camera (NTSC)	E03021

OPTIONAL ACCESSORIES

Description	Part number
E90W Trunnon Mounting Kit	A62132
E120W Trunnon Mounting Kit	A62133
E140W Trunnon Mounting Kit	A62134
Video/Alarm Audio Cable	A62158

E-Series Widescreen Dimensions



	A	B	C	D
E140W	16.67 in (423.4mm)	10.9 in (276.8mm)	4.4 in (112mm)	5.5 in (139.7mm)
E120W	14.98in (380.4mm)	9.66 in (245.4mm)	4.4 in (112mm)	5.5 in (139.7mm)
E90W	12.46 in (316.4mm)	7.74 in (196.5mm)	4.4 in (112mm)	5.5 in (139.7mm)

E-Series Widescreen Specifications

Screen Resolution	E90W 800x480 WVGA E120W 1280x800 WXGA E140W 1280x800 WXGA
Video	1 + 3 in / 1 VGA out
Network Sensors	Digital Radar, Digital Sounder Module, SIRIUS Marine Weather
NMEA2000	1
SeaTalk [®]	1
SeaTalk [®] 9	1
SeaTalk (1st Generation)	1
NMEA0183 Inputs	3
NMEA0183 Outputs	2
AIS Support	Yes
Waypoints	3000
Routes	50
Voltage Requirements	10.7 to 32 Volts DC (12/24v nominal)
Power Consumption	E90W 19 Watts
Typical power consumption with full backlight on	E120W 22 Watts E140W 32 Watts

Detailed Specifications and product information available at www.raymarine.com

2 year limited warranty

Lifestyle photography courtesy of Boston Whaler and Tiara Yachts



E | S E R I E S

W I D E S C R E E N

Raymarine®

LIT82305

Raymarine Inc
21 Manchester Street
Merrimack, NH 03054
USA
Tel: 603.881.5200
Fax: 603.864.4756
www.raymarine.com

Raymarine plc.
Marine House, 5 Harbournate,
Southampton Road, Portsmouth,
Hampshire PO6 4BQ, UK.
Tel: +44(0)23 9269 3611
Fax: +44(0)23 9269 4642
www.raymarine.co.uk

WWW.RAYMARINE.COM

- Extensive product information and video tutorials
- Expert technical advice and FAQs
- Connect with authorized Raymarine dealers
- Stay connected with the latest Raymarine news on our Insider Blog

Product specifications subject to change without notice



09/09