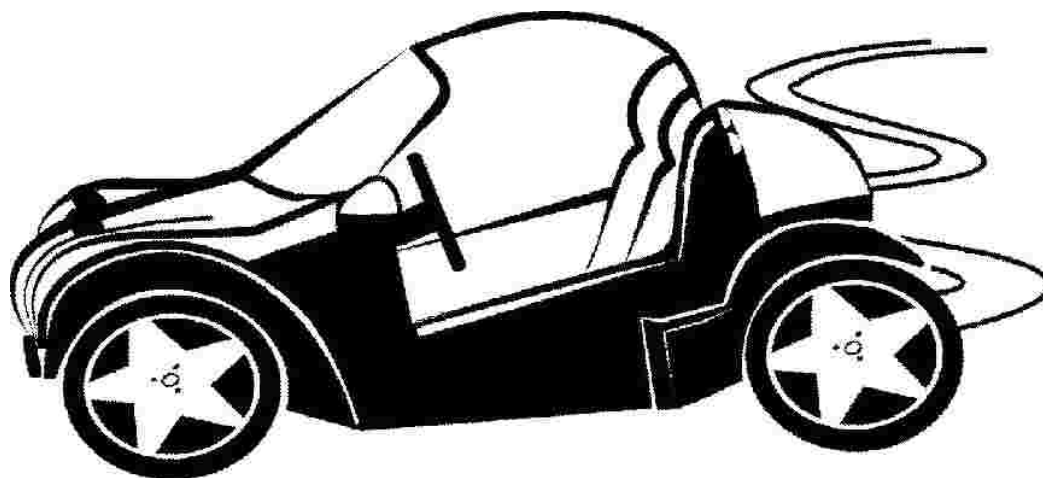


QT INSTRUCTION MANUAL



PLEASE READ BEFORE USE

Distributed by Qpod Motor Company

Tel: 01404 850545 Fax: 01404 851110

www.qpod.co.uk

Contents

Pg 3	Servicing and Warranty
Pg 4	Serial Numbers / Vehicle Keys / Vehicle Ignition
Pg 5	Vehicle Instruments and Controls
Pg 6	Instrument Panel
Pg 7	Instrument Panel Warning Lights / Lighting Control / Indicators / Horn / Rear Fog Lamp Control
Pg 8	Centre Console Switches / Heater Temperature Control Tap / Seat Belts / Manual Gear Lever
Pg 9	Foot Pedal Controls / Handbrake / Locking Fuel Cap
Pg 10	The Bonnet Section / Under The Bonnet / Under The Boot
Pg 11	First Service Return Form
Pg 12	General Specifications / Servicing Schedule

Servicing and warranty

- The QT has been designed primarily as a fun vehicle to travel relatively short distances on or off road. No warranty or representation is made by QMC as to the fitness for any specific use of any vehicle unless expressly set out in writing and signed by a director. Whilst members of staff will answer any questions in good faith, if it is a customer's intention to rely on any statements given by staff in deciding to buy a vehicle, then it is incumbent on the customer to obtain such statement in writing from QMC, signed by a director. QMC will not normally be in a position to form a view on whether a vehicle is suitable for a particular use linked to the specific and particular needs of an individual customer, but will only be able to answer questions about the features of the vehicles.
- The warranty is only valid with proof of first service at an authorised service point giving the details of the owner, mileage, registration and chassis number of the vehicle on the First Service Return Form and returned to QMC.
- The basic warranty covers parts and labour for a period of 2 years from the date of production. However, if a vehicle is used for commercial purposes, (e.g. self drive hire, advertising/promotions vehicle or as a taxi) the warranty covers parts only, and only for 6 months from registration.
- The warranty does not include breakdown recovery, collection or delivery, only parts and labour whilst the vehicle is at an authorised service workshop.
- We reserve the right to replace or repair defective parts at our discretion and to require that defective parts that are replaced are returned to us.
- The Warranty is invalidated if:
 - The vehicle is worked on by any workshop not previously approved in writing by Secma or QMC.
 - If the original specifications of the vehicle are modified in any way.
 - If non-genuine spare parts are used.
 - If the vehicle is subject to negligent or unreasonable use or is overloaded in any way.
 - If the damage is due to the inexperience or carelessness of the driver or incorrect or inappropriate maintenance.
 - If the vehicle is used for competition, self drive hire or as a taxi.

The Warranty does not extend to normal wear and tear, cables, tyres, batteries, bulbs, etc towing costs or costs consequent upon the breakdown of the vehicle.

Serial Numbers

The Chassis Number is located on a plate in the engine compartment. It is also stamped under the rear driver's side wheel arch.



The Engine Number is located on the top of the engine and is also stamped onto the front of the engine casing.



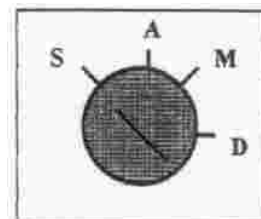
Vehicle Keys

You will be supplied with 2 x Ignition Keys, 2 x Petrol Cap Keys and 2 x Engine Compartment Lid Keys.

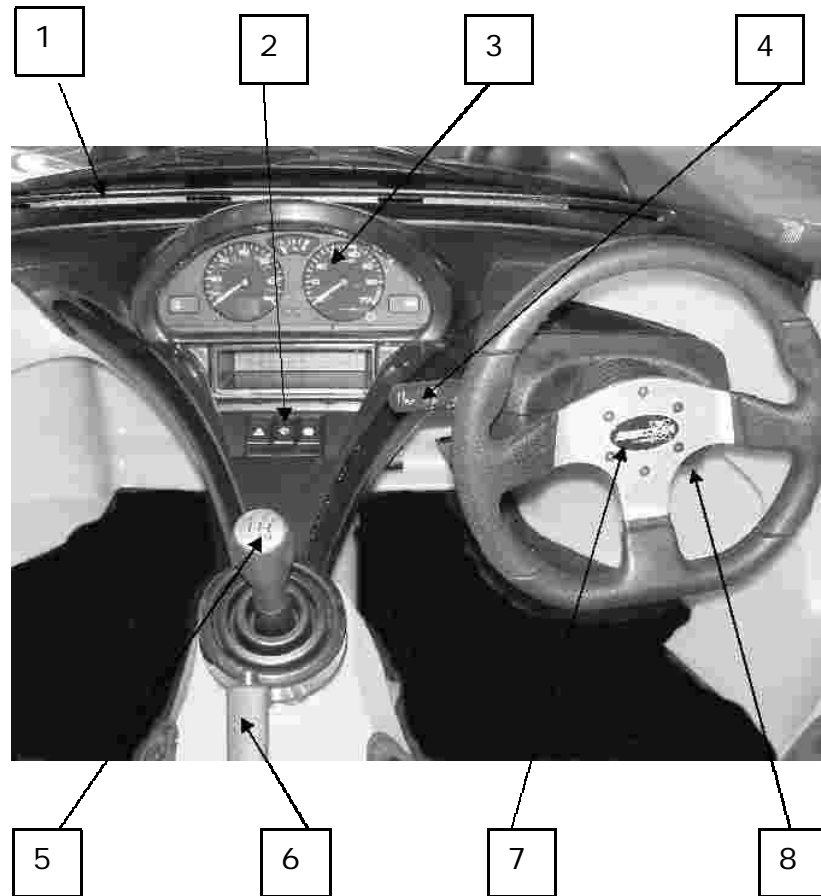
Vehicle Ignition

The Ignition Key operates as follows:

- S – Parking position and Steering Lock
- A – Ignition Off
- M – Engine Running
- D – Engine Start



Vehicle Instruments and Controls



1 – Windscreen Demisting Vents

2 – Centre Console Switches – Hazard Warning Lights, Windscreen Wiper and Washers.

3 – Instrument Panel

4 – Lighting Control, Fog Lamp, Horn and Indicators.

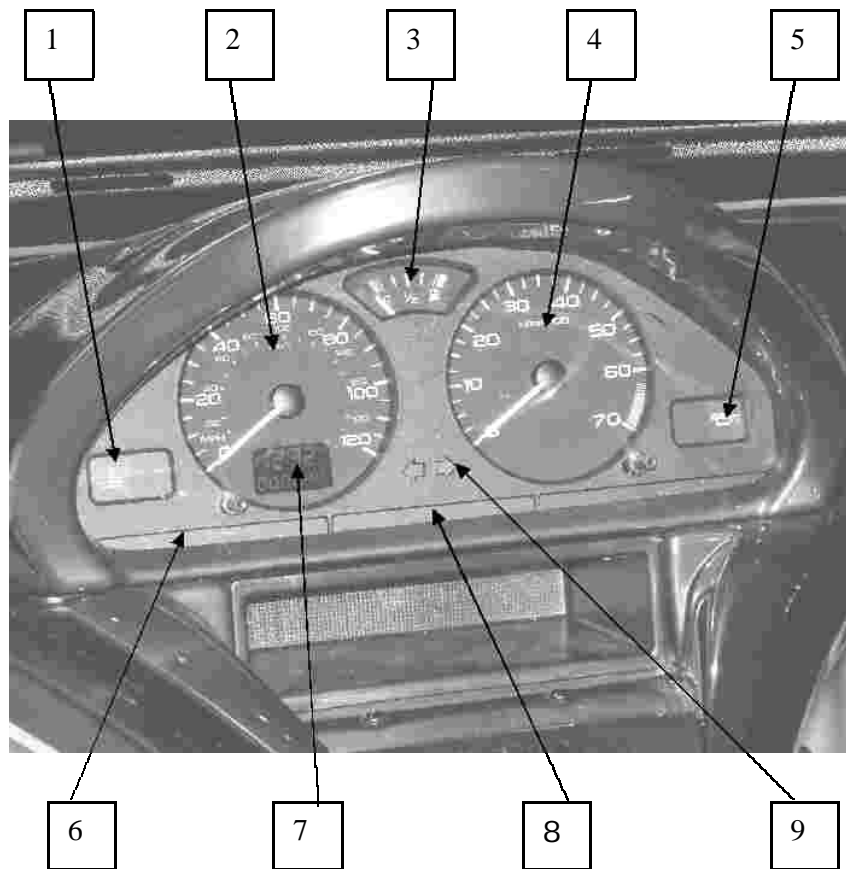
5 – Gear Lever

6 – Handbrake

7 – Steering Wheel

8 – Steering Lock and Ignition

Instrument Panel



- 1 – Engine Coolant Temperature Warning Light
- 2 – Speedometer
- 3 – Fuel Gauge
- 4 – Rev Counter
- 5 – Oil Pressure Warning Light
- 6 – High/Low Headlight Beam and Rear Fog Lamp
- 7 – Trip Recorder and Service Indicator
- 8 – Battery Charge and Handbrake Warning Lights
- 9 – Indicator Left and Right

Instrument Panel Warning Lights



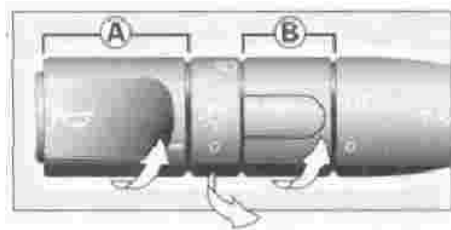
Handbrake and Brake Fluid Level Warning Light: If lit, it indicates that either the handbrake is applied or not been fully released OR the Brake Fluid level has dropped dramatically (the light will remain lit even though the handbrake has definitely been released).



Battery Charge Warning Light: If lit, it indicates that either there is a fault in the operation of the battery charging circuit OR the battery or starter terminals are loose OR there is an Alternator fault.

Lighting Control

Fig 1:



Front Lights: To operate, turn ring A, (Fig 1)

Lights Off



Side Lights On



Dipped/Main Beam Headlights: Pull stalk towards you to change the setting.

Indicators: To Indicate LEFT move the stalk downwards and to indicate RIGHT move the stalk upwards.

Horn: Press the end of the stalk.

Rear Fog Lamp Control: If fitted (optional extra) operate using ring B (Fig 1)



Fog Lamp OFF



Fog Lamp ON

This operates with the Dipped and Main Beam Lights.

Centre Console Switches



Hazard Warning Lights

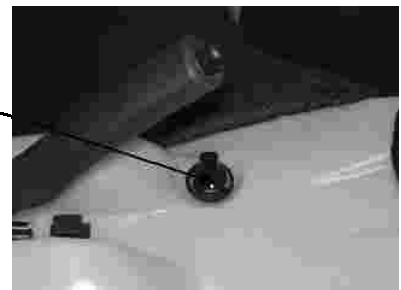
Windscreen Wiper and Washers. (To activate the washers press and hold the switch beyond the first click).

Heater Fan Switch. First click = Low setting. Second click = High setting.

Heater Temperature Control Tap

The temperature for the heater is controlled by turning the tap which is situated under the handbrake.

- Turn Clockwise for warm air (plus Heater Fan ON)
- Turn Anti-clockwise for cold air (plus Heater Fan ON)



Seat Belts

Seat Belts must be worn at all times by the driver and passenger when in the vehicle.

Make sure that the Seat Belt buckle is firmly latched together before driving off in the vehicle.

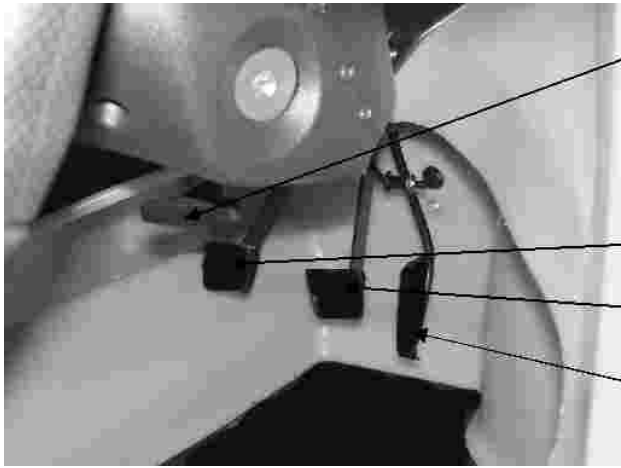
Manual Gear Lever

The gear positions are indicated on the gear lever knob.

Reverse gear can only be engaged from Neutral when the vehicle is stationary with the engine idling.



Foot Pedal Controls



Pedal Adjustment Lever

(To adjust the pedals backwards and forwards, pull the lever down and either pull or push it to bring the pedals closer or further away.)

Clutch Pedal

Brake Pedal

Accelerator Pedal

Handbrake

To apply the handbrake once you are in a parked position, pull the lever UP.

To release the handbrake, press the button on the end and push the lever DOWN.



Locking Fuel Cap



The vehicle has a hinged locking fuel cap in the middle of the bonnet. The key hole of the cap is located under the flap marked 'lift'. Turn the key 90° clockwise to open.



The Bonnet Section

The bonnet panel is secured by four quick release pins. To remove the bonnet panel, all of the pins must be removed by turning them 90° anti-clockwise with a screw-driver. To replace the bonnet; push down the pins and turn back 90° clockwise with a screw-driver.

Note – The same pins fix down the boot corners.



Under The Bonnet



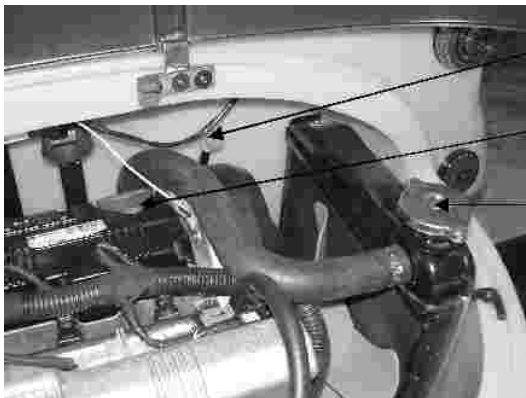
1 – Battery

2 – Washer Bottle

3 – Fuse Box – (see below)

15 amp	- Main feed to ECU
10 amp	- Rear Lights (Fog and Reverse)
10 amp	- Headlights
7.5 amp	- Indicators, wiper and washer
7.5 amp	- Heater Fan
10 amp	- Ignition Circuit
1 amp	- Dash Warning Lights
7.5 amp	- Side Lights

Under The Boot



Engine Oil Level 'Dip Stick'; Check the Oil regularly and top up when required.

Engine Oil Filling Point

Radiator Cap; Check water level regularly and top up with distilled water when required.

Note – Only check the levels when the engine is cold and not running.

FIRST SERVICE RETURN FORM

**Returned to -
Qpod Motor Company
Fenny Bridges, Honiton, EX14 3BG**

Vehicle type:

Vehicle registration :

Chassis number:

Customer name:

Customer address:

Date of 1st Service:

Speedo Reading :

Name and Telephone Number of Service Site :

Service Engineer

Sign –

Print -

Comments :

QT - General Specifications

Dimensions

Weight - 398kg, Length - 240cm, Width - 140cm, Height - 110cm

Fuel

Fuel type - 95 octane min.

Fuel tank capacity - 22litres

Fuel consumption (average) - Approx. 60 mpg

Oil

Engine oil – Multi-grade SAE 15W40 - 15W50 - 10W40

Engine oil capacity - 1.3 litres

Gearbox oil - Not applicable (designed to last the life of the gearbox)

Tyres

Tyre size - 175/60 13

Tyre pressure - 1.5 to 1.8 bar front and rear

Service Schedule

First Service at 600 miles (1000 km)

- Oil change (1.3 litres including filter)
- Change oil filter
- Check liquid levels of coolant and brake systems
- Check torque of wheel nuts
- Check clearances on the brake and clutch pedals
- Check condition of brake pads
- Check adjustment of hand brake cable
- Check lights and headlight adjustment
- Road test

Service at 3000 miles (5000km) and every 3000 miles thereafter

- As per 600 mile service, also
- Clean air filter

Every 6000 miles (10000km)

- Change fuel filter
- Change air filter

Every 12000 miles (20000km)

- Change spark plugs

Every 50000 miles (80000km)

- Change cam belt