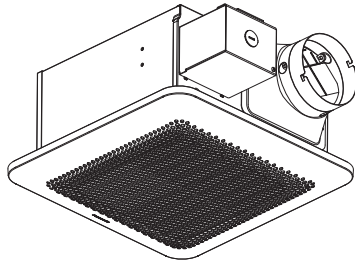
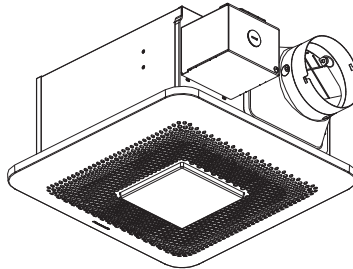


Service Manual

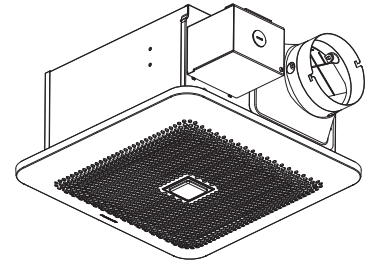
Ventilating Fan
(North America Market)



FV-0811RF1



FV-0811RFL1



FV-0811RFM1

⚠ WARNING

This service information is designed for experienced repair technicians only and is not designed for use by the general public. It does not contain warnings or cautions to advise non-technical individuals of potential dangers in attempting to service a product. Products powered by electricity should be serviced or repaired only by experienced professional technicians. Any attempt to service or repair the product or products dealt with in this service information by anyone else could result in serious injury or death.

IMPORTANT SAFETY NOTICE

There are special components used in this equipment which are important for safety. These parts are marked by ⚠ in the Schematic Diagrams, Exploded Views and Replacement Parts List. It is essential that these critical parts should be replaced with manufacturer's specified parts to prevent shock, fire or other hazards. Do not modify the original design without permission of manufacture.

We suggest to handle such parts after the static electricity prevention.

It is forbidden to touch the PCB parts by bare hands during the repairing process.

CONTENTS

PAGE

| | |
|------------------------------|-------|
| 1.Specifications | 1 |
| 2.Parts Identification | 2~7 |
| 3.Wiring Diagram | 8~9 |
| 4.Parts List | 10~13 |

1. Specifications

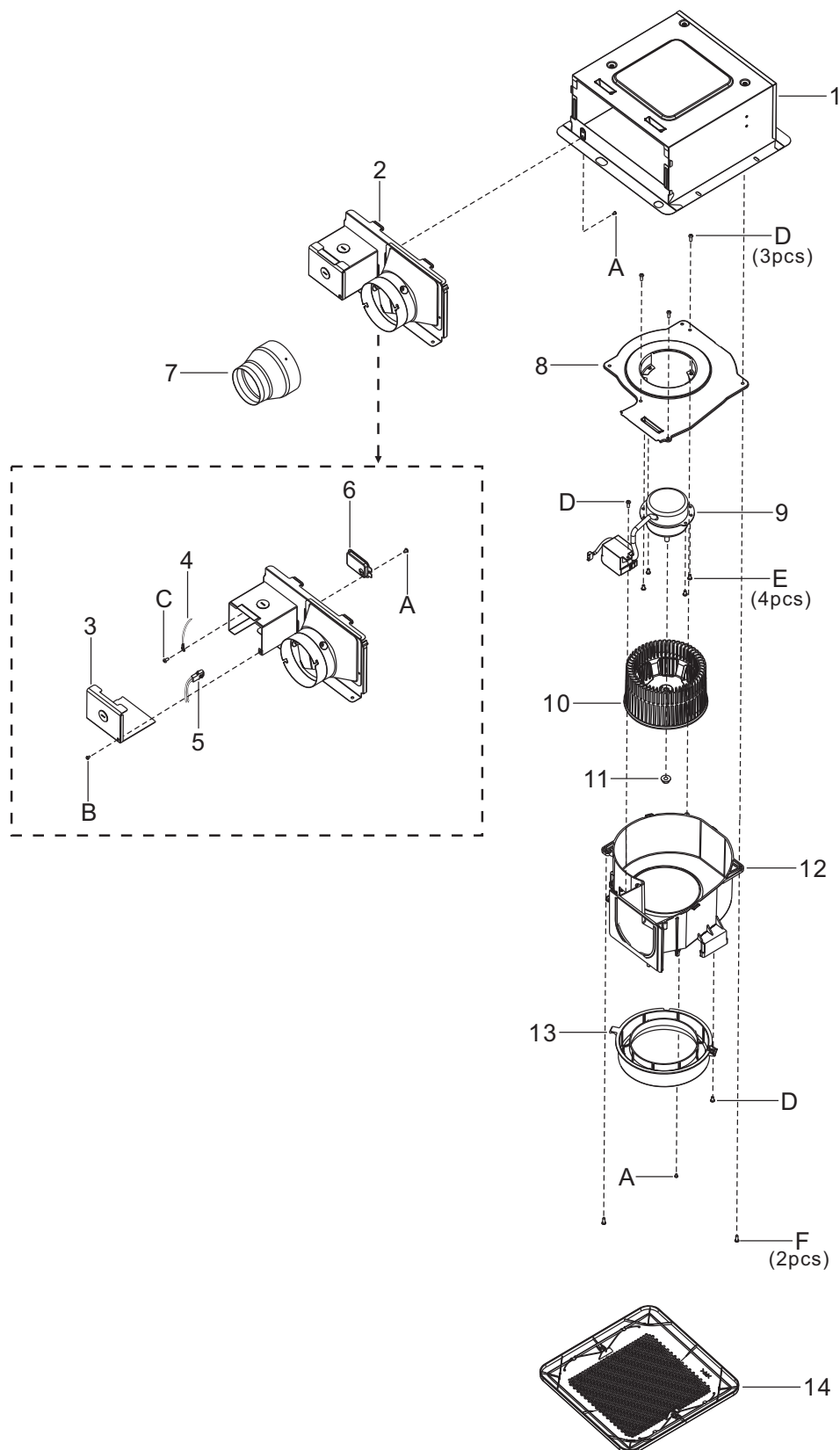
| Model No. | Air direction | Voltage (V) | Frequency (Hz) | Duct diameter (inches) | Air volume at 0.1"WG (CFM) | Noise (sones) | Speed (rpm) | Power (W) | Weight lb.(kg) |
|-------------|---------------|-------------|----------------|------------------------|----------------------------|---------------|-------------|-----------|----------------|
| FV-0811RF1 | Exhaust | 120 | 60 | 3 | 70 | 0.6 | 1057 | 21.6 | 9.5/(4.3) |
| | | | | | 100 | 1.4 | 1249 | 27.1 | |
| | | | | 4 | 80 | <0.3 | 875 | 21.6 | |
| | | | | | 110 | 0.8 | 975 | 26.6 | |
| FV-0811RFL1 | Exhaust | 120 | 60 | 3 | 70 | 0.6 | 1040 | 20.3 | 10.1 (4.6) |
| | | | | | 100 | 1.5 | 1270 | 26.5 | |
| | | | | 4 | 80 | 0.4 | 899 | 20.2 | |
| | | | | | 110 | 1.0 | 1026 | 26.1 | |
| FV-0811RFM1 | Exhaust | 120 | 60 | 3 | 70 | 0.6 | 1057 | 21.6 | 9.9/(4.5) |
| | | | | | 100 | 1.4 | 1249 | 27.1 | |
| | | | | 4 | 80 | <0.3 | 875 | 21.6 | |
| | | | | | 110 | 0.8 | 975 | 26.6 | |

HVI Certified performance based on HVI Procedures 915, 916, and 920.

2. Parts Identification

FV-0811RF1

Main Body Section



2. Parts Identification

FV-0811RF1

Main Labels



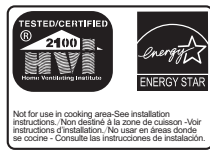
15



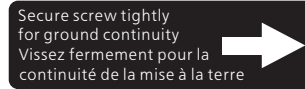
17



18

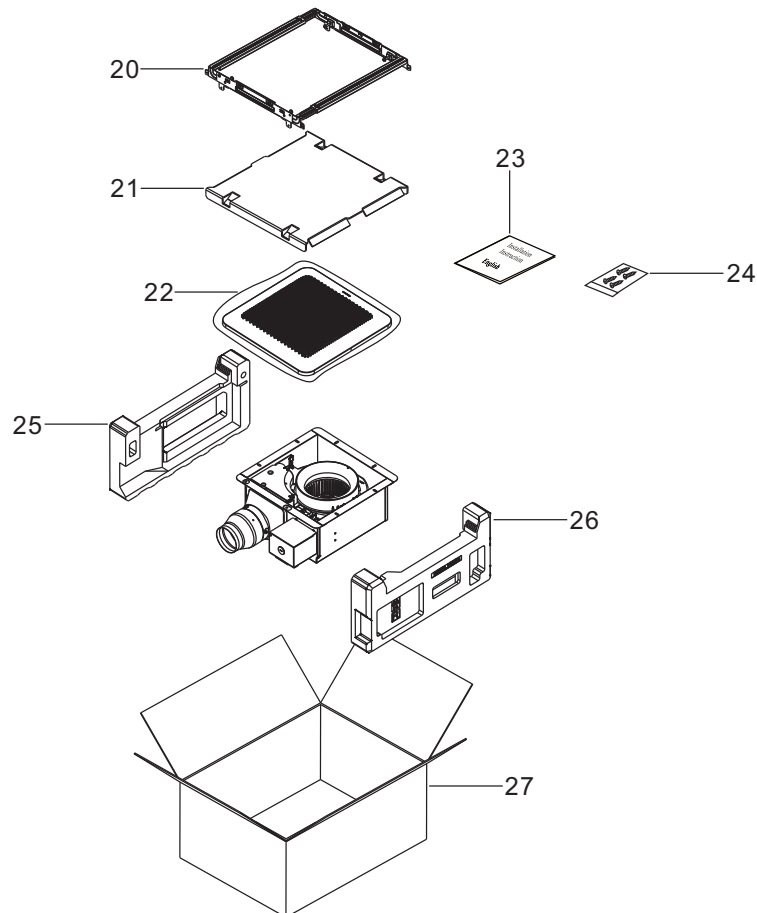


16



19

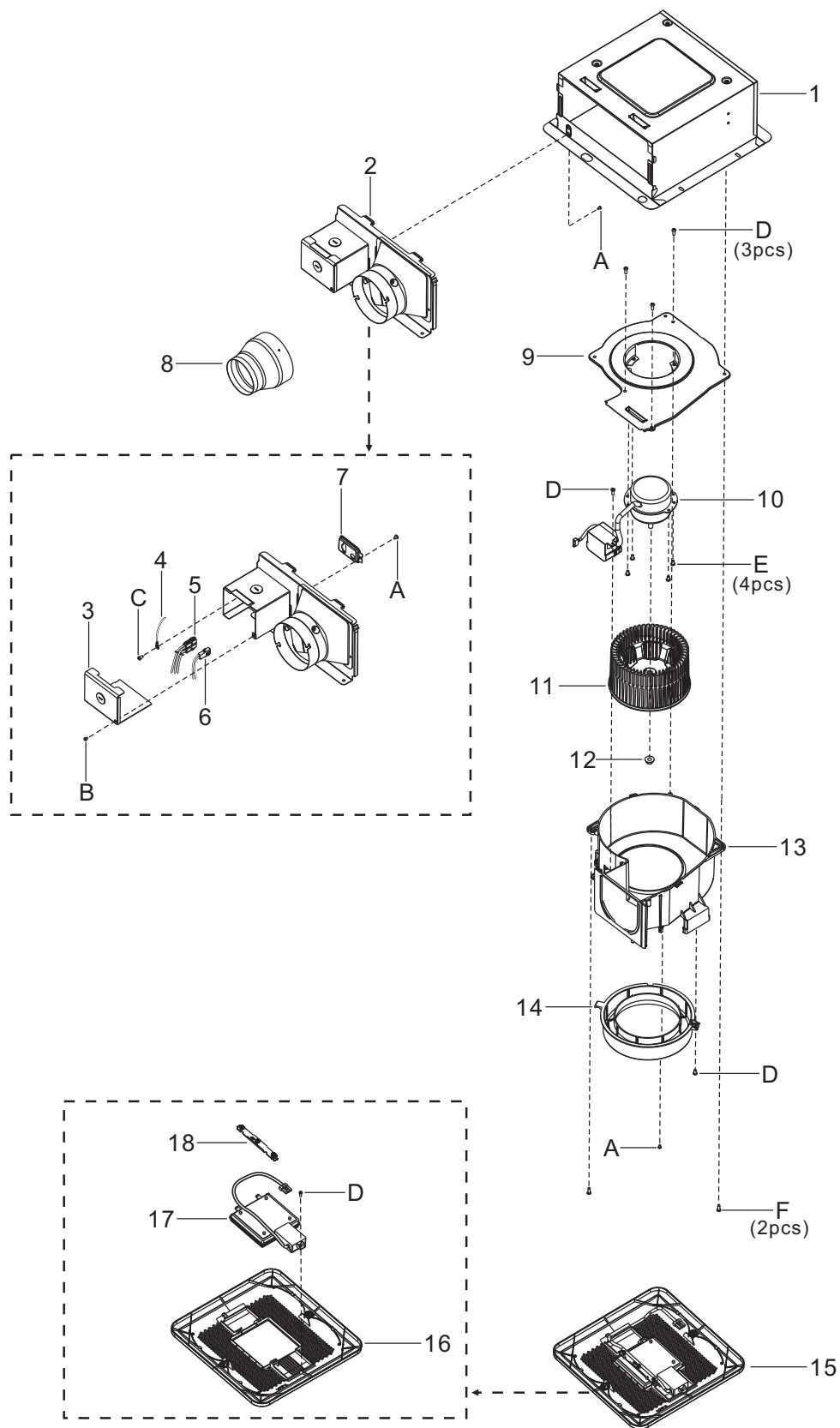
Packing Section



2. Parts Identification

FV-0811RFL1

Main Body Section



2. Parts Identification

FV-0811RFL1

Main Labels

Panasonic Ventilating Fan/Ventilateur
 Model No. **FV-0811RFL1** **FC TP**
 AC 120 V 60 Hz
 0.25 A (Fan) 0.10 A (Light) Ser.No. []
 Panasonic Corporation of North America **(S)**
 Made in China / Fabriqué en Chine
 Type IC - Inherently Protected.
 Type IC - Protection Inhérente.

19

This device complies with part 15 of the FCC Rules. Operation is subject to the following two conditions:
 (1) This device may not cause harmful interference, and
 (2) this device must accept any interference received, including interference that may cause undesired operation.

Cet appareil est conforme à la partie 15 des règlements de la FCC. L'utilisation est sujette aux deux conditions suivantes:
 (1) Cet appareil ne peut pas causer d'interférence nuisible.
 (2) Cet appareil doit accepter les interférences reçues, y compris les interférences qui peuvent causer un fonctionnement non désiré.

23

TESTED/CERTIFIED
2100
 Home Ventilating Institute

ENERGY STAR
 ENERGY STAR

Not for use in cooking area-See installation instructions. Non destiné à la zone de cuisson - Voir instructions d'installation. No usar en áreas donde se cocine - Consulte las instrucciones de instalación.

20



21

WARNING
 Always operate during and each cycle of your regular cleaning routine. Do not use this fan for anything other than its intended purpose. Do not use for anything other than its intended purpose. Do not use for anything other than its intended purpose.

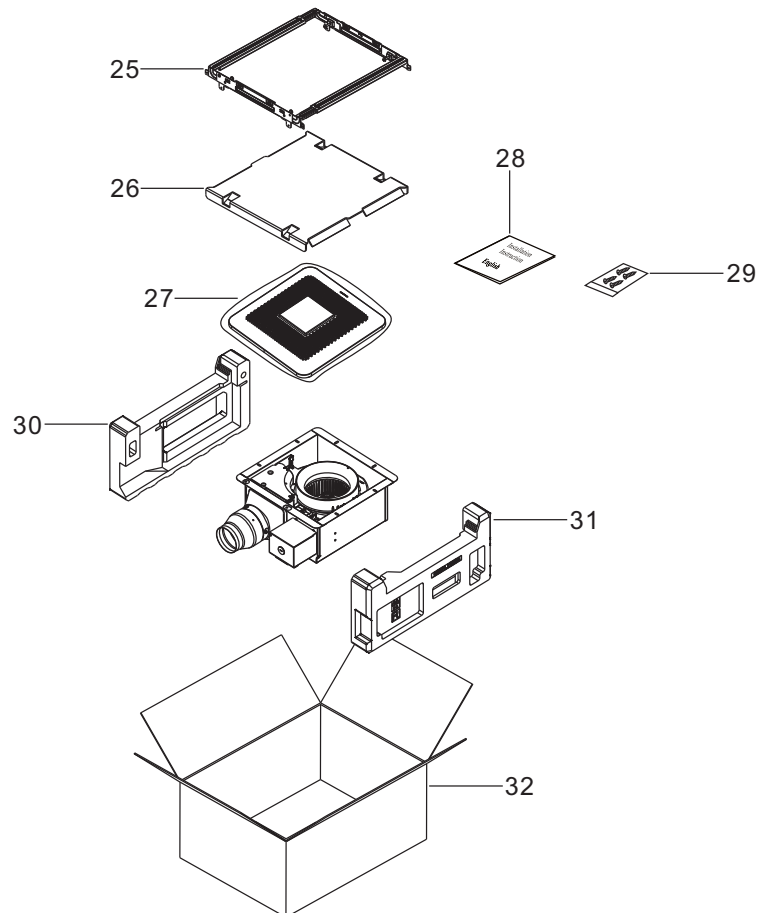
ATTENTION
 Toujours utiliser pendant et à chaque cycle de votre routine de nettoyage régulière. Ne pas utiliser ce ventilateur pour autre chose que son usage prévu. Ne pas utiliser ce ventilateur pour autre chose que son usage prévu. Ne pas utiliser ce ventilateur pour autre chose que son usage prévu.

22

Secure screw tightly for ground continuity
 Vissez fermement pour la continuité de la mise à la terre

24

Packing Section



2. Parts Identification

FV-0811RFM1

Main Labels



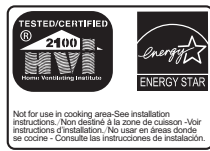
23



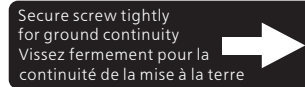
25



26

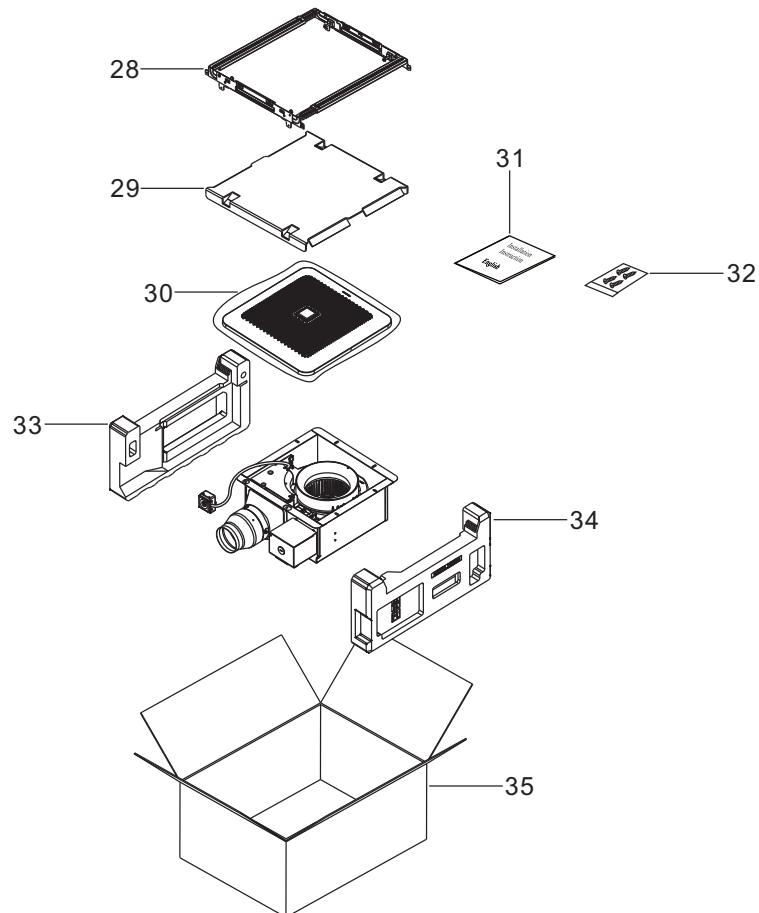


24



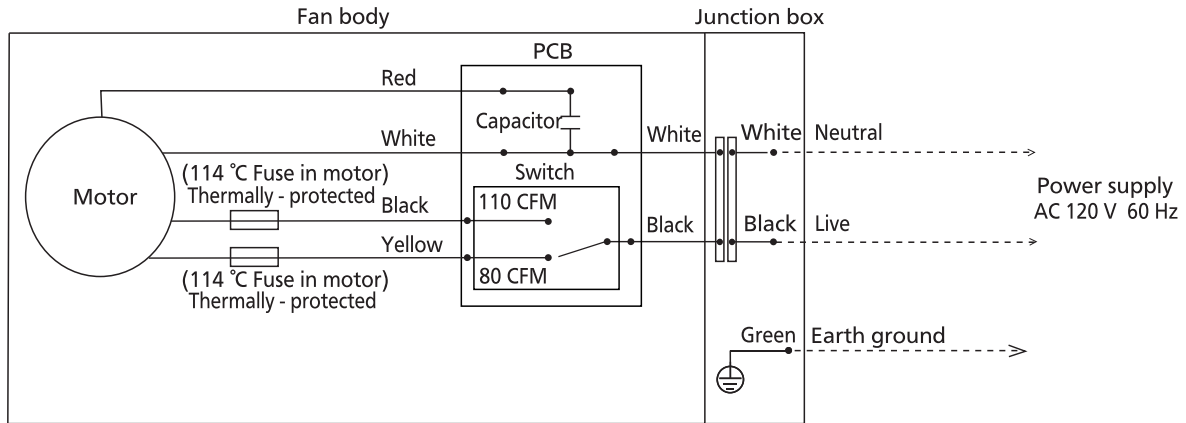
27

Packing Section

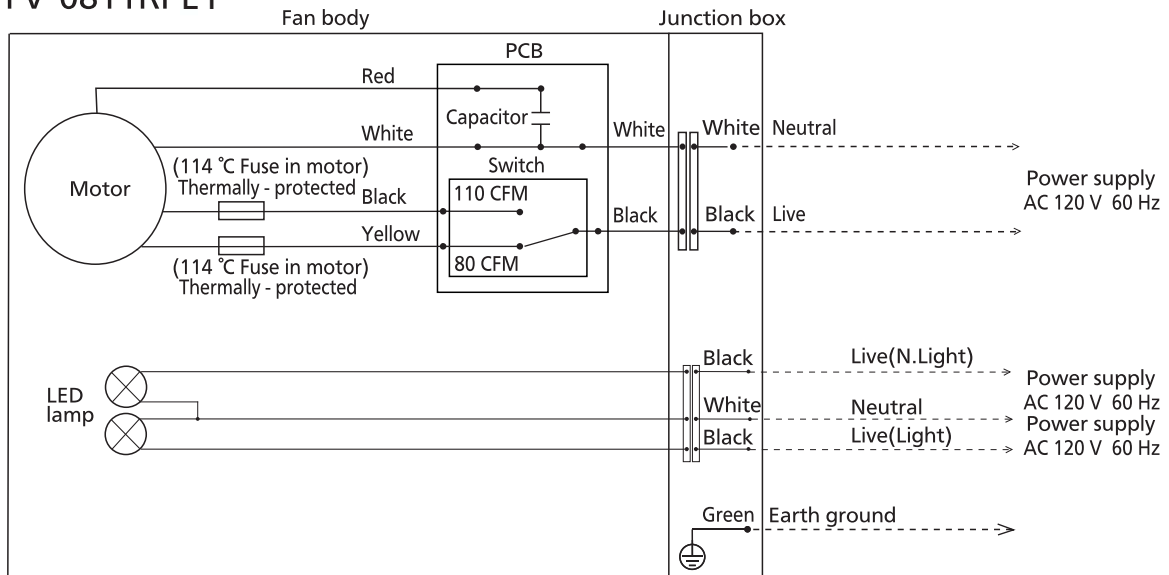


3. Wiring diagram

FV-0811RF1

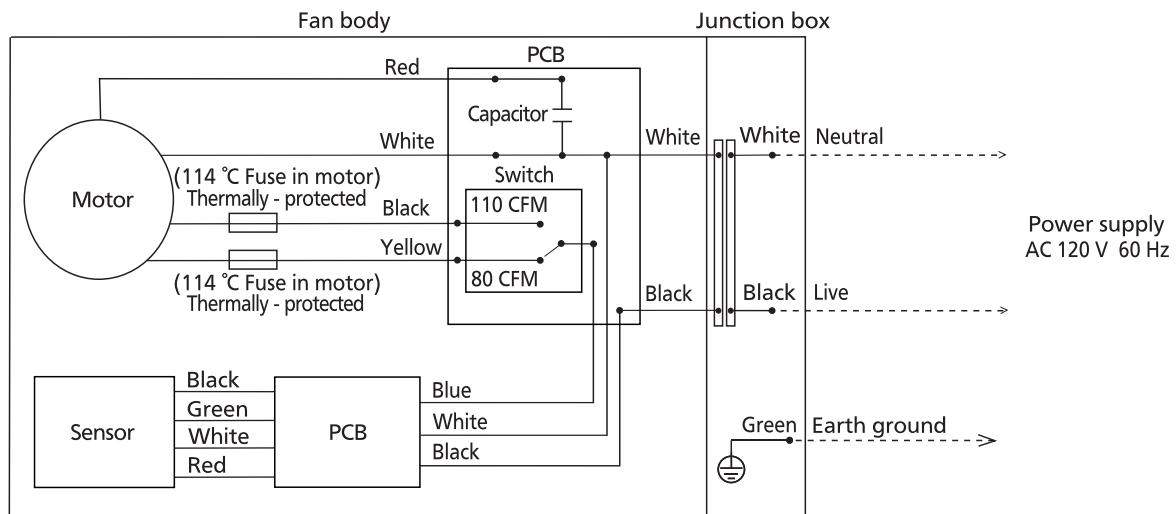


FV-0811RFL1



3. Wiring diagram

FV-0811RFM1



4. Parts List

FFV-0811RF1

Main Body Section

| No. | Part No. | Part Name | Q'ty | Remark |
|-----|-------------|-----------------------|------|--------|
| 1 | FFV1600146S | Frame Assy | 1 | |
| 2 | FFV0000183S | Adapter Assy | 1 | ⚠ |
| 3 | FFV2800027S | Junction Cover | 1 | |
| 4 | FFV3450010S | Earth Lead Wire | 1 | ⚠ |
| 5 | FFV0900072S | Connector Assy (V) | 1 | ⚠ |
| 6 | FFV0900052S | Connector Plate | 1 | |
| 7 | FFV0000038S | Adapter Connector | 1 | |
| 8 | FFV3702266S | Motor Support Unit | 1 | |
| 9 | FFV3702322S | Motor Unit | 1 | ⚠ |
| 10 | FFV0400119S | Blade | 1 | |
| 11 | FFV7020021S | Nut | 1 | |
| 12 | FFV0790115S | Casing Assembly | 1 | |
| 13 | FFV4300160S | Orifice | 1 | |
| 14 | FFV3400159S | Louver Assy | 1 | |
| A | FFV7000108S | Truss Tap Screw | 3 | |
| B | FFV7000064S | Bind Screw | 1 | |
| C | FFV7000203S | Earth Lead Wire Screw | 1 | ⚠ |
| D | FFV7000089S | Truss Tap Screw | 5 | |
| E | FFV7000074S | Truss Tap Screw | 4 | |
| F | FFV7000080S | Plus Bind Screw | 2 | |

Main Labels

| No. | Part No. | Part Name | Q'ty | Remark |
|-----|-------------|-----------------|------|--------|
| 15 | FFV4020942S | Name Plate | 1 | |
| 16 | FFV0810011S | Caution Label 1 | 1 | |
| 17 | FFV2260003S | UL Mark | 1 | |
| 18 | FFV0810010S | Caution Label | 1 | |
| 19 | FFV6730045S | Warning Label | 1 | |

Packing Section

| No. | Part No. | Part Name | Q'ty | Remark |
|-----|-------------|---------------------------|------|-----------------------------------|
| 20 | FFV2230024S | Hanger Assembly | 1 | |
| 21 | FFV4710381S | Louver Case Assy | 1 | |
| 22 | FFV4650016S | Poly Cover | 1 | |
| 23 | FFV2540225S | Installation Instructions | 1 | English, For CA Market/USA Market |
| 24 | FFV0010238S | Accessory A | 1 | |
| 25 | FFV4710439S | Left Pad | 1 | |
| 26 | FFV4710440S | Right Pad | 1 | |
| 27 | FFV9001386S | Packing Case | 1 | |

4. Parts List

FV-0811RFL1

Main Body Section

| No. | Part No. | Part Name | Q'ty | Remark |
|-----|-------------|-----------------------|------|--------|
| 1 | FFV1600146S | Frame Assy | 1 | |
| 2 | FFV0000184S | Adapter Assy | 1 | ⚠ |
| 3 | FFV2800027S | Junction Cover | 1 | |
| 4 | FFV3450010S | Earth Lead Wire | 1 | ⚠ |
| 5 | FFV0900059S | Connector Assembly(V) | 1 | ⚠ |
| 6 | FFV0900072S | Connector Assy (V) | 1 | ⚠ |
| 7 | FFV0900074S | Connector Plate | 1 | |
| 8 | FFV0000038S | Adapter Connector | 1 | |
| 9 | FFV3702266S | Motor Support Unit | 1 | |
| 10 | FFV3702323S | Motor Unit | 1 | ⚠ |
| 11 | FFV0400119S | Blade | 1 | |
| 12 | FFV7020021S | Nut | 1 | |
| 13 | FFV0790115S | Casing Assembly | 1 | |
| 14 | FFV4300160S | Orifice | 1 | |
| 15 | FFV3400160S | Louver Section | 1 | ⚠ |
| 16 | FFV3400161S | Louver Unit | 1 | |
| 17 | FFV3400148S | Led Unit | 1 | ⚠ |
| 18 | FFV2520040S | Insulation Plate | 1 | |
| A | FFV7000108S | Truss Tap Screw | 3 | |
| B | FFV7000064S | Bind Screw | 1 | |
| C | FFV7000203S | Earth Lead Wire Screw | 1 | ⚠ |
| D | FFV7000089S | Truss Tap Screw | 6 | |
| E | FFV7000074S | Truss Tap Screw | 4 | |
| F | FFV7000080S | Plus Bind Screw | 2 | |

Main Labels

| No. | Part No. | Part Name | Q'ty | Remark |
|-----|-------------|-----------------|------|--------|
| 19 | FFV4020943S | Name Plate | 1 | |
| 20 | FFV0810011S | Caution Label 1 | 1 | |
| 21 | FFV2260003S | UL Mark | 1 | |
| 22 | FFV0810010S | Caution Label | 1 | |
| 23 | FFV6730109S | FCC Label | 1 | |
| 24 | FFV6730045S | Warning Label | 1 | |

Packing Section

| No. | Part No. | Part Name | Q'ty | Remark |
|-----|-------------|---------------------------|------|----------------------------------|
| 25 | FFV2230024S | Hanger Assembly | 1 | |
| 26 | FFV4710381S | Louver Case Assy | 1 | |
| 27 | FFV4650016S | Poly Cover | 1 | |
| 28 | FFV2540228S | Installation Instructions | 1 | English,For CA Market/USA Market |
| 29 | FFV0010238S | Accessory A | 1 | |
| 30 | FFV4710439S | Left Pad | 1 | |
| 31 | FFV4710440S | Right Pad | 1 | |
| 32 | FFV9001387S | Packing Case | 1 | |

4. Parts List

FV-0811RFM1

Main Body Section

| No. | Part No. | Part Name | Q'ty | Remark |
|-----|-------------|-----------------------|------|--------|
| 1 | FFV1600146S | Frame Assy | 1 | |
| 2 | FFV0000183S | Adapter Assy | 1 | ⚠ |
| 3 | FFV2800027S | Junction Cover | 1 | |
| 4 | FFV3450010S | Earth Lead Wire | 1 | ⚠ |
| 5 | FFV0900072S | Connector Assy (V) | 1 | ⚠ |
| 6 | FFV0900052S | Connector Plate | 1 | |
| 7 | FFV0000038S | Adapter Connector | 1 | |
| 8 | FFV3702266S | Motor Support Unit | 1 | |
| 9 | FFV3702324S | Motor Unit | 1 | ⚠ |
| 10 | FFV0400119S | Blade | 1 | |
| 11 | FFV7020021S | Nut | 1 | |
| 12 | FFV0790115S | Casing Assembly | 1 | |
| 13 | FFV4300160S | Orifice | 1 | |
| 14 | FFV3740018S | Main PCB Box | 1 | |
| 15 | FFV3740019S | Main PCB Assembly | 1 | ⚠ |
| 16 | FFV3740020S | Main PCB Box Cover | 1 | |
| 17 | FFV3400162S | Louver Section | 1 | |
| 18 | FFV2220051S | Sensor Cover | 1 | |
| 19 | FFV3400163S | Louver Unit | 1 | |
| 20 | FFV5560051S | Spring Stopper | 1 | |
| 21 | FFV2520025S | Insulation Plate | 1 | |
| 22 | FFV5500045S | Sensor Assembly | 1 | ⚠ |
| A | FFV7000108S | Truss Tap Screw | 3 | |
| B | FFV7000064S | Bind Screw | 1 | |
| C | FFV7000203S | Earth Lead Wire Screw | 1 | ⚠ |
| D | FFV7000089S | Truss Tap Screw | 5 | |
| E | FFV7000074S | Truss Tap Screw | 4 | |
| F | FFV7000145S | Truss Tap Screw | 3 | |
| G | XTT4+14CFJ | Truss Tap Screw | 2 | |
| H | FFV7000080S | Plus Bind Screw | 2 | |
| I | FFV7000140S | Pan Tap Screw | 2 | |

Main Labels

| No. | Part No. | Part Name | Q'ty | Remark |
|-----|-------------|-----------------|------|--------|
| 23 | FFV4020944S | Name Plate | 1 | |
| 24 | FFV0810011S | Caution Label 1 | 1 | |
| 25 | FFV2260003S | UL Mark | 1 | |
| 26 | FFV0810010S | Caution Label | 1 | |
| 27 | FFV6730045S | Warning Label | 1 | |

4. Parts List

FV-0811RFM1

Packing Section

| No. | Part No. | Part Name | Q'ty | Remark |
|-----|-------------|---------------------------|------|----------------------------------|
| 28 | FFV2230024S | Hanger Assembly | 1 | |
| 29 | FFV4710381S | Louver Case Assy | 1 | |
| 30 | FFV4650016S | Poly Cover | 1 | |
| 31 | FFV2540225S | Installation Instructions | 1 | English,For CA Market/USA Market |
| 32 | FFV0010238S | Accessory A | 1 | |
| 33 | FFV4710439S | Left Pad | 1 | |
| 34 | FFV4710440S | Right Pad | 1 | |
| 35 | FFV9001388S | Packing Case | 1 | |