

58MM Portable MINI Thermal Printer

Instruction Manual

Version

June, 2014

Notice

- All rights reserved. Reproduction of any part of this manual in any form whatsoever, without manufacturer's express permission is forbidden.
- The contents of this manual are subject to change without notice.
- All efforts have been made to ensure the accuracy of the contents of this manual at the time of going to press. However, should any errors be detected, manufacturer would greatly appreciate being informed of them.
- The above notwithstanding, manufacturer can assume no responsibility for any errors in this manual.

Declaration

We have been carefully handling the manual and trying our best to ensure the accuracy of the contents of this manual. But we still can't promise it is always correct due to our products are being improved and updated all the time. The contents of this manual will be updated without notice at any time.

All of our products must be used under environments/locations which are taken care by human being. We are not responsible for any loss or damages caused by any accident while the products are used without taken-care by human being. If there are any products failures caused by human behaviors or natural disaster, we will not provide or just provide partial free maintenance.

Please contact local agents for the latest information of the products.

Notes on safety

This section presents important information intended to ensure safety and effective use of the printer. Please read carefully.

- Be sure to use the specified battery and power source provided by our company. Connection to an improper power source may cause fire, explosion or damage to the printer.
- Don't put the battery into the fire or water, don't disassemble or modify the battery, don't be short circuit, otherwise may result in injury or fire even explosion.
- If the printer would not be used for a long time, be sure to take off the battery, otherwise the battery may leak the corrosive liquid out, if improper operation causes battery leak, and the liquid is spattered on the skin or clothes, please wash it with water immediately, if spattered in the eyes, please rinse them with water thoroughly and see a doctor.
- Please don't open the paper room cover when it is printing or just when printing is over, do not touch the print head with hand or body, overheat may cause scald.

Notes on using

- 1、 Do not store the printer in hot and humid conditions.
 - 2、 The lithium battery have a character that if it is not used for several months, it possibly can't be charged ever.
 - 3、 The printer's power adapter is to be connected to a stable power 110~220Volts, please do not use other devices on the same power socket, to avoid voltage fluctuations.
 - 4、 Avoid water or conductive material (for example: metal). If water is present on the surface please turn off the power immediately.
 - 5、 Please ensure that a thermal paper roll is always inserted in the printer to avoid damaging the printing roller and the printer head.
 - 6、 Please ensure that your printer is serviced and repaired by a qualified technician. No responsibility is taken for misuse and/or non-qualified servicing.
 - 7、 The power adapter that comes with this printer is specifically designed to be only used with the printer, please do not use an alternative power adapter.or use 9V-2A The standard power adapter.
 - 8、 In order to ensure print quality and longevity of your printer, please ensure that only good
-

quality thermal paper rolls are used.

9、 Please keep this manual in a safe place, where it can be accessed easily and used for your reference.

1.Features & Application area

— . Features

- It can print 58mm width thermal paper
- Paper dimensions 40mm
- High-speed,Clear printing
- Super power lithium electricity, standby time can reach 5-6 days
- Auto sleep, auto awake, save electricity
- small size、 light weight、 reliable performance、 simple to connect、 easy to use

≡ . Application area

Compared to the traditional thermal receipt printer, Mini printer has smaller body, more reliable capability, more steady printing and portable advantages. The Mini printer can work on a lot of locations, such as the TAXI bill printing, administrative fees receipt printing, post receipt printing, restaurant ordering information printing, online payment information printing, etc. With the rapid popularity of smart-mobile, Mini printer will be more widely used in the near future

2. Specification

Printing Method: Direct Thermal

Speed: 90mm/sec

Reliability TPH Life: 100km

Resolution: 203DPI (8dot/mm)

Printing Width: 48mm (384dot)

Paper Width: 58±01mm

Roll Diameter: $\varphi \leq 40$ mm

Paper Type: Thermal Paper

Power: rechargeable lithium battery/Ni-MH battery

Battery: 7.2VNiMh, 700mAh

Charging method: external charger

Print parameters: support to download the Logo trademark

Language: support for multiple languages

Character size: 384 dots/line

FontA: 12*24dots, 1.5(W)*3.0(H)mm

FontB: 9*17dots, 1.1(W)*2.1(H)mm

Simplified/Traditional: 24*24dots, 3.0(W)*3.0(H)mm

Printing Chinese character: Chinese: simplified Chinese 24x24 point. support 18030 font library, support Taiwan and HK traditional(complex font) ANK: ANK characters

Extended character table:

OEM437/Katakana/OEM850/OEM860/OEM863/OEM865/West Europe/Greek/Hebrew/EastEurope/Iran/WPC1252/OEM866/OEM852/OEM858/IranII/Latvian/Arabic/PT1511251/OEM747/WPC1257/Vietnam/OEM864/Hebrew/WPC1255/Thai

Emulation: ESC/POS/STAR command

Interface: standard RS232/USB, Bluetooth 2.0&4.0(option)/SPP agreement or infrared/IRCOMM agreement (optional)/Android up to 4.0 operation system.

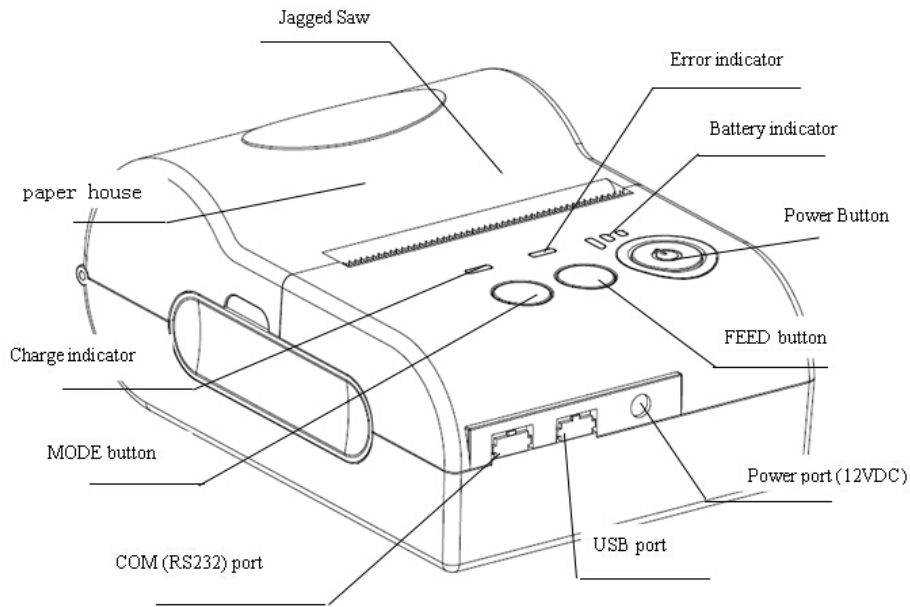
Driver: Win200/Win2003/Win2000/Win7/WinXP/VISTA/WIN8/LINUX

Working Temperature: -10 ~ 50°C

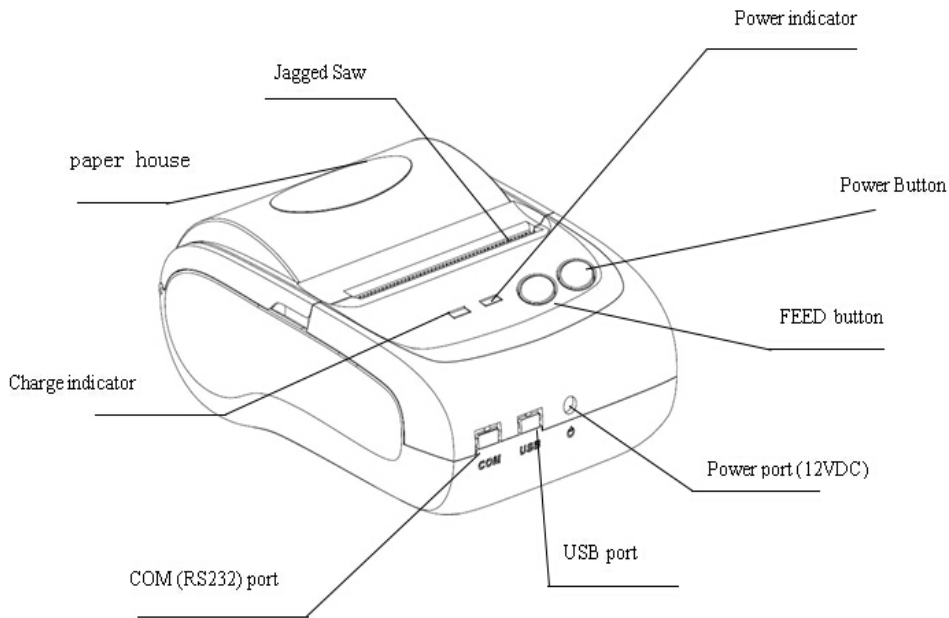
Humidity: 10 ~ 90%

Weight: 134g

3. Appearance



Model: OCPP-M03
Size: 103*75*46 mm
Weight: 134g(With Battery)



Model: OCPP-M05
Size: 102X78X46 mm
Weight: 134g(with Battery))

4. Communication Interface

- 1. RS232(COM) : standard RS232 Communications Protocol
- 2. Bluetooth 2.0 : standard Bluetooth 2.0 Communications Protocol
- 3. USB : standard USB Communications Protocol

4-1. RS-232 Serial Interface

RS-232 is developed according to the EIA standard asynchronous transmission, the specifications are as following:

Data transmission: serial interface

Synchronization: asynchronous

Signal Level: RS-232 level, logic 1:-5.4v, logic 0 : +5.4v

Hardware Flow Control: None

Baud rate: 2400pbs to 115200pbs is optional

Data word length: 8 bits

Stop bit: 1bit

Parity: None

Users can get the current baud rate from the printer self-testing page.

Serial cable: We have made the cable specially using mini port like Mini USB port which connects the printer .The following picture shows the signal definition of the RS-232 Serial interface:

The connection between the printer and host follows the following rules:

Printer	Host
TXD	RXD
RXD	TXD
GND	GND

However, the printer usually works only on receiving data, it doesn't have to respond anything back to the host, then TXD signal can be ignored, and then the connection can be sampled as following:

Printer	Host
RXD	TXD
GND	GND

4-2. Bluetooth Connection

Bluetooth is a proprietary open wireless technology standard for exchanging data over short distances (using short-wavelength radio transmissions in the ISM band from 2400-2480 MHz) from fixed and mobile devices, creating personal area networks (PANs) with high levels of security.

4-2-1. Bluetooth specification

Using blueCore4-Ext chipset, fully compatible with Bluetooth 2.0;

High-sensitivity receive signal, small size, lower consumption

Supporting 1200bps ~ 1382400bps variety of baud rate;

Supporting SPP agreement, the maximum transfer speed is up to 3Mbit / s;

4-2-2. Use "AT" command to modify Bluetooth Module's parameters

Notice: The following changes can't be done by user, these should be done in factory by Manufacturer. So if user wants to change these parameters, please inform our sales person before ordering our printers.

Modify name---Send character string "AT+NAMEXXXX, feedback "Okname";

For example, if you want change name to "LY58", please send string "AT+NAMELY58".

Modify PIN code--- Send character string "AT+PINXXXX, feedback "Oksetpin";

For example, if you want change PIN code to "8888", please send string "AT+PIN8888".

(Note: Default PIN code is "1234", you only can reset PIN code with four figures.)

Clear Bluetooth address--- Send character string "AT+CLR00", feedback "Okclear";

Modify baud rate--- Send character string "AT+BAUDX, feedback "Ok+current baud rate";

X represents the baud rate code, as following:

1-----1200

7-----57600

2-----2400

8-----115200

3-----4800

9-----230400

4-----9600

A-----460800

5-----19200

B-----921600

6-----38400

C-----1382400

For example, if you want to change baud rate to 115200bps, please send string "AT+BAUD8".

4-2-3. Build connection.

1. Turn on the printer;
2. Search for the Bluetooth device with host device;
3. If there are other Bluetooth devices, please select "LY58"(for example) printer;
4. Enter default pairing code "1234"
5. Pairing succeed.

4-3. USB Interface

The printer is connected by standard Mini USB cable(included in accessories) for communication. The USB type belongs to slave device type.

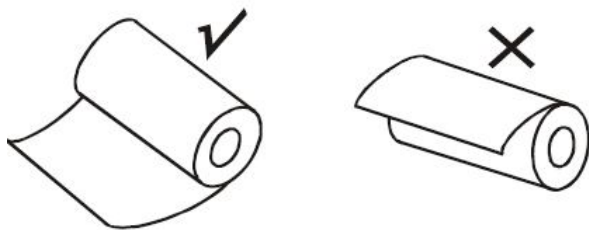
5.The installation of the paper roll

The printer use 58MM thermal paper, and adopt to easy paper loading. So the paper is very convenient install.

Paper diameter Max 40mm.

Thermal paper installation method is as follows:

- (1) Open the printer top cover
- (2) Thermal Paper as follow Graph to put into paper storehouse




- (3) Put out a little of the paper outside printer ,then close the top cover.
- (4) Use paper sawtooth tear off redundant paper

Button Operating Instructions

POWER (Green Light)	FEED (Rad Light)	Printer Status
OFF	OFF	Printer Close
ON (Always)	Off	Printer open and have paper
ON(Always)	Flash	Printer Open , without paper
ON (Always)	ON (Always)	Printer have paper
Under the normal working status, the paper feeding begins when press 【FEED】 button, and stop when loosen 【FEED】 button.		the printer paper feed
Power off the printer, then hold down the 【FEED】 button and press the power button at the same time. Wait 2 seconds ,then loosen the 【FEED】 button,the current setting will be printed out.		The printer Self test
Power off the printer, then hold down the 【FEED】 button and press the power button at the same time. Wait until the power indicator & 【ERROR】 led are both on, and then 【ERROR】 led goes off, then loosen the 【FEED】 button, the language setting status will be printed out.		Transformation in both English and Chinese
Power off the printer, then hold down the 【FEED】 button and press the power button at the same time. Wait until the power indicator & 【ERROR】 led are both on, and then 【ERROR】 led goes out, after, 【ERROR】 led goes on again ,then loosen the 【FEED】 button, the density setting status will be printed out. (It has three levels setting for printing density, it is a circle Low level→Middle level→High level→Low level..., Please switch the density status by repeating operation presented above.)		Set printing density
Power off the printer, hold down the 【MODE】 button and press the power button at the same time. Wait until the power		Hexadecimal printing


indicator &【ERROR】led are both on, and then 【ERROR】led goes out, then loosen the 【MODE】 button. The printer turns into the hexadecimal printing mode and print the presentation. Way to quit hexadecimal printing : The way to quit hexadecimal printing mode is switch off the printer .

6. The Bluetooth configuration

Step1: Make sure your device (like PC, Note Book) has Bluetooth function, then once the Bluetooth for your device is activated, you will see the Bluetooth sign  showed in the right bottom side of your device(like PC) screen.

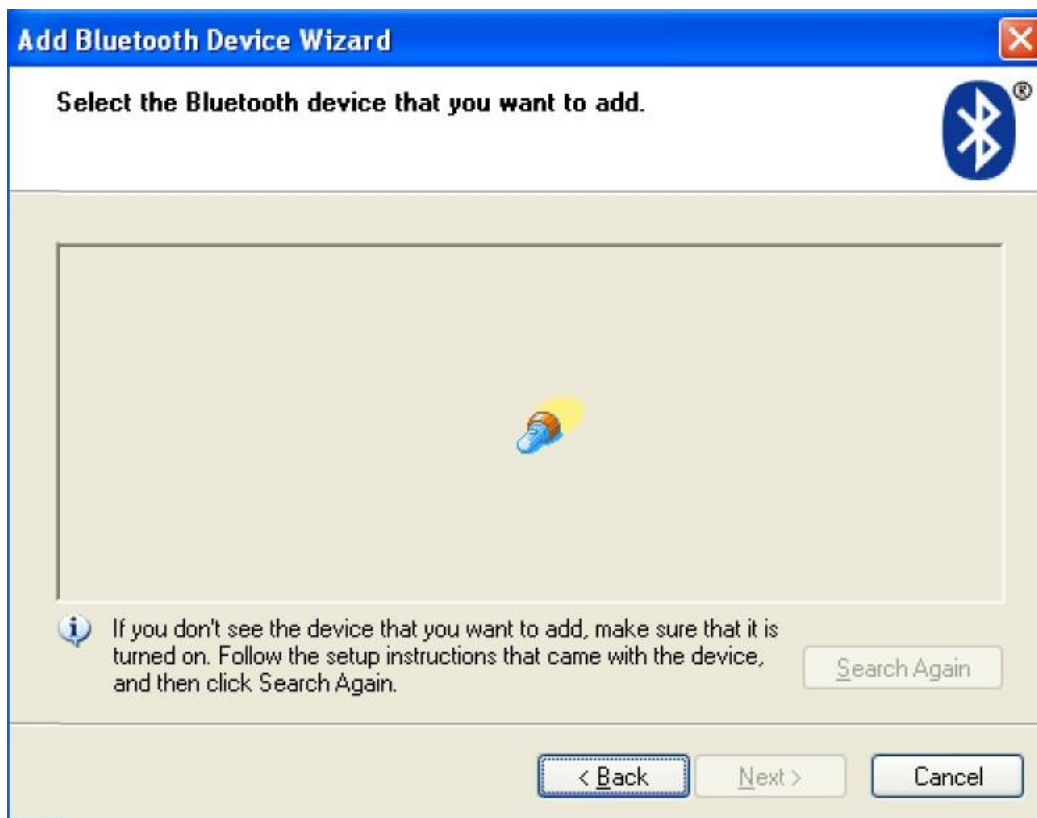


Step2:Power on the Bluetooth printer.

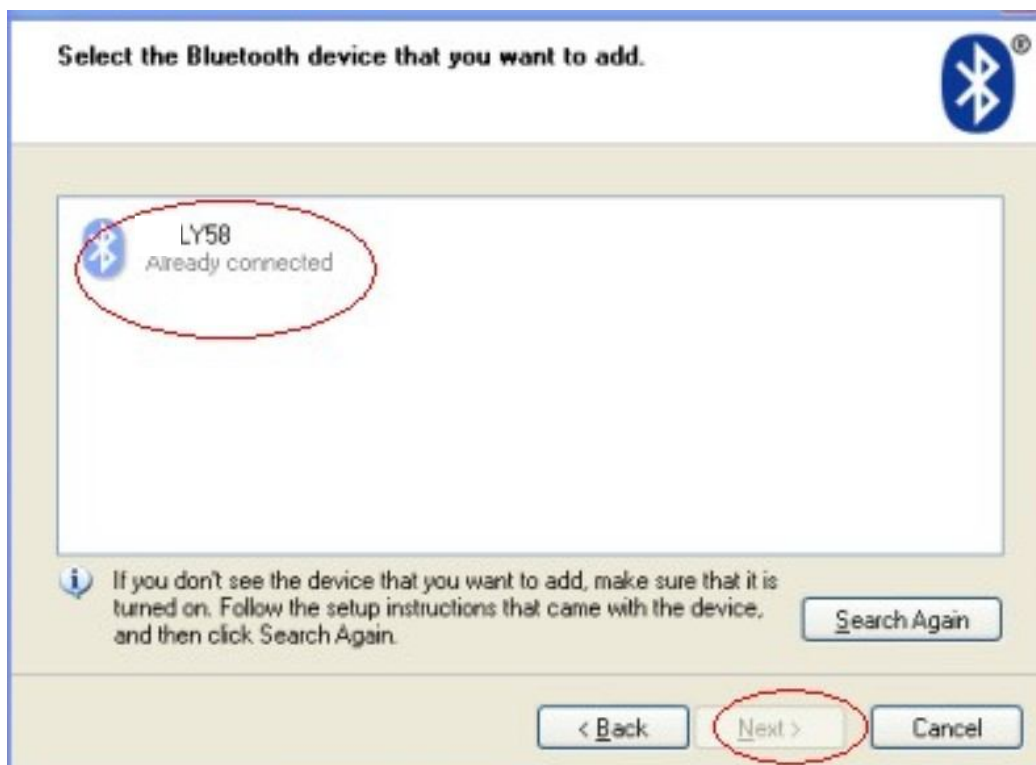
Step3:To add the Bluetooth printer, please left-click the  →click "Add a Bluetooth Device" ,then you will enter wizard screen , please choose "My device is set up according and ready to be found" →click "Next"(showed as below).



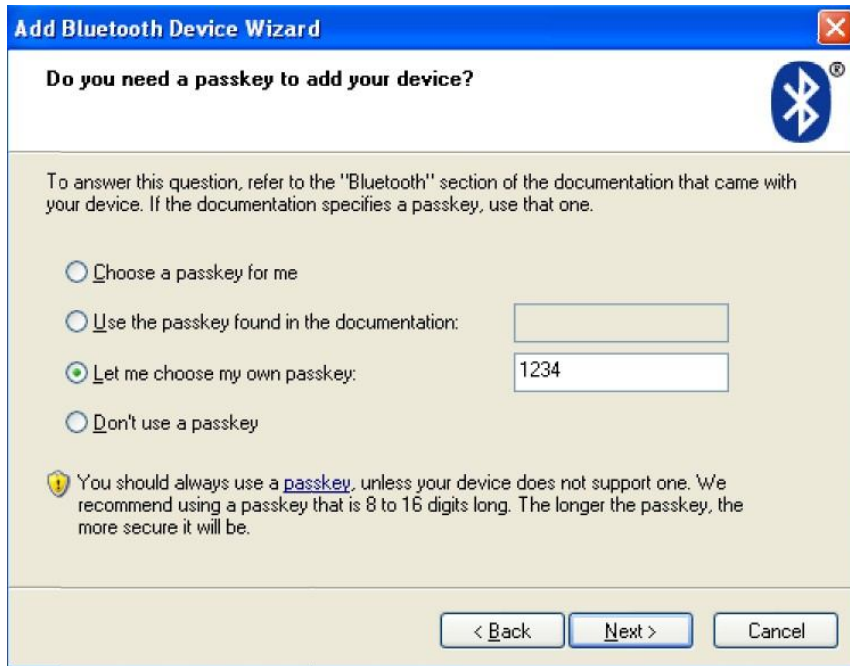
Step4:if you can see screen as below,then the device is searching the bluetooth printer,please wait.



Step5: Once the Bluetooth printer is found. You can see it listed on the screen, Here, for example, LY58 Bluetooth printer is successfully found. Please click "-LY58", → click "Next"



Step6: Choose "Let me choose my own passkey", then enter "1234"(this is factory default passkey, if you want to change it, you have to inform us to set the new passkey for you in our factory before shipping), then click "Next".



Step7: if you can see the screen as below, that means the Bluetooth printer is already connected. Please notice the assigned COM ports, then Click "Finish".



Step8: Now if you want to test if the printer is OK to print, you could use a com tool, and send printed data to **Outgoing COM port**(here, it is **COM5**).

(Com tool setting is 9600,N,8,1.)

7.Driver Install

The first thing is to connect the usb cable between the printer and the computer, and **power on the printer.**

The second thing is to find the printer driver named "**setup.exe**" included in the CD, and double-click on it. Then we are entering the installing screen. Follow the steps in order:

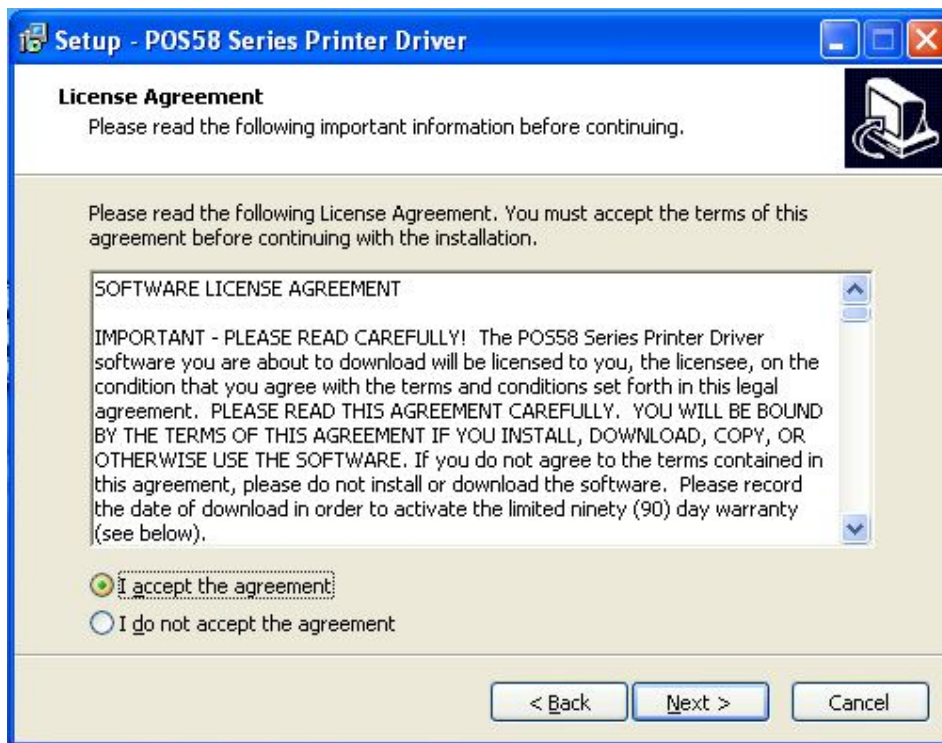
Step1: select the language you want. We recommend that choose "**English**" as the language. Then click on "**OK**" to continue.



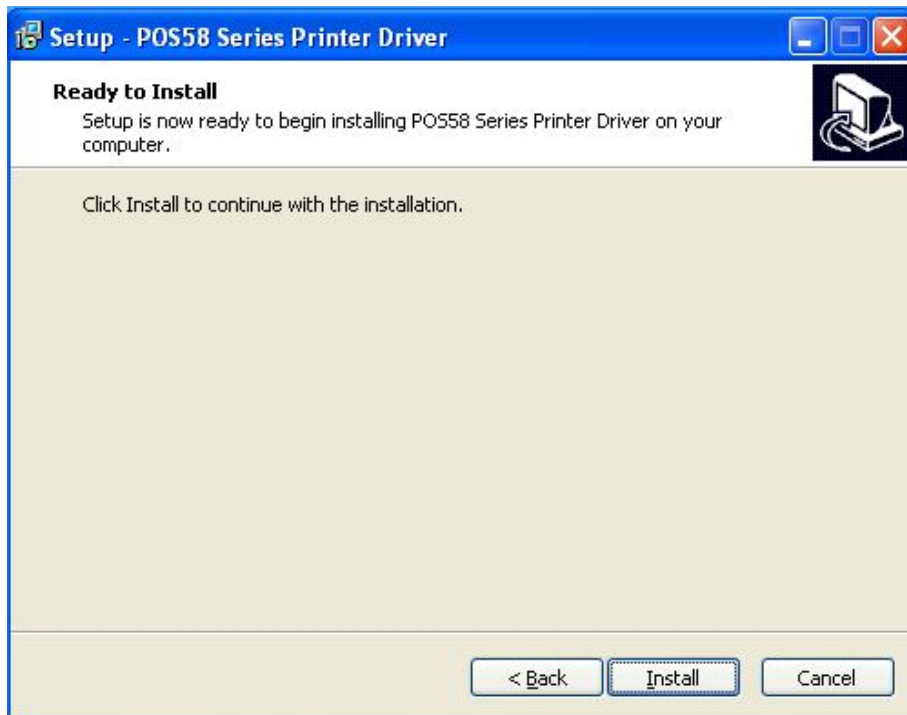
Step2: click on "**Next**" to continue.



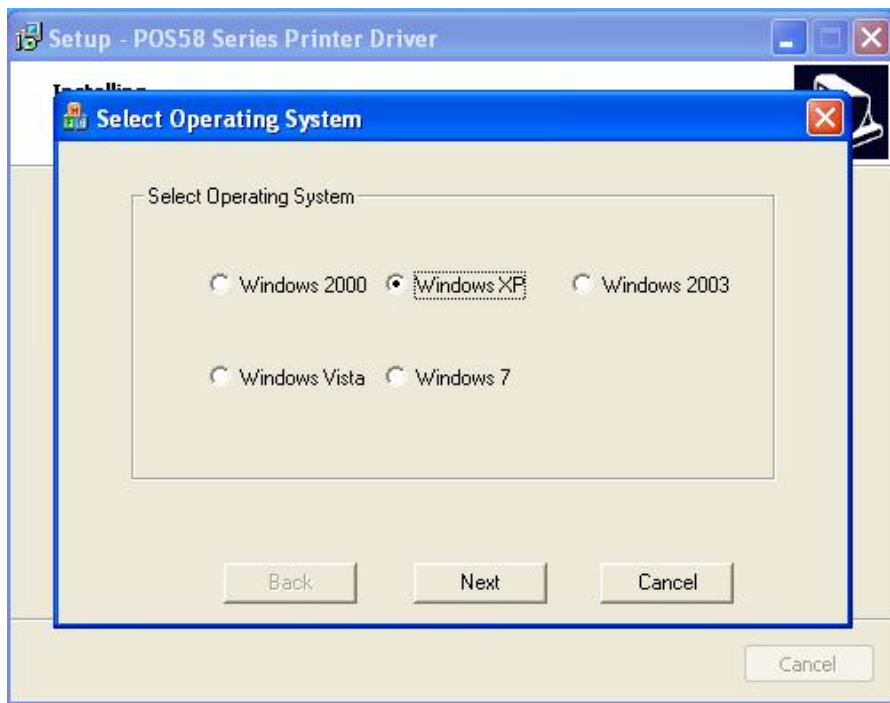
Step3: Select the agreement option as below, and click on "**Next**" to continue.



Step 4: Click on "install" to continue.

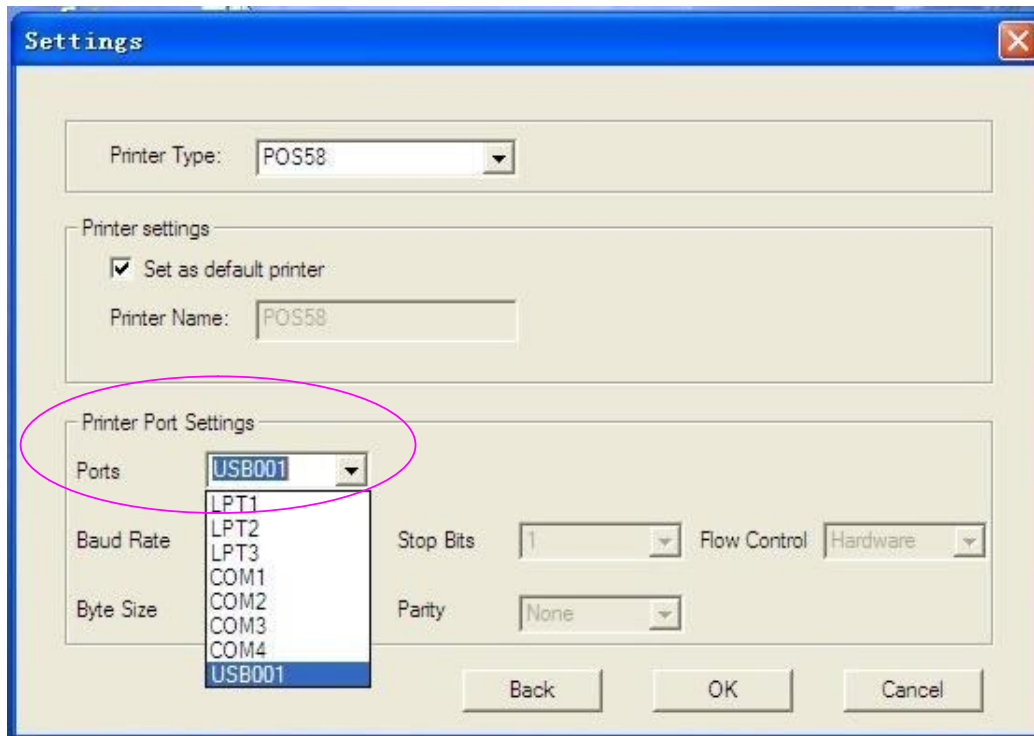


Step 5: Select the Operating System you are using, then click on "Next" to continue.

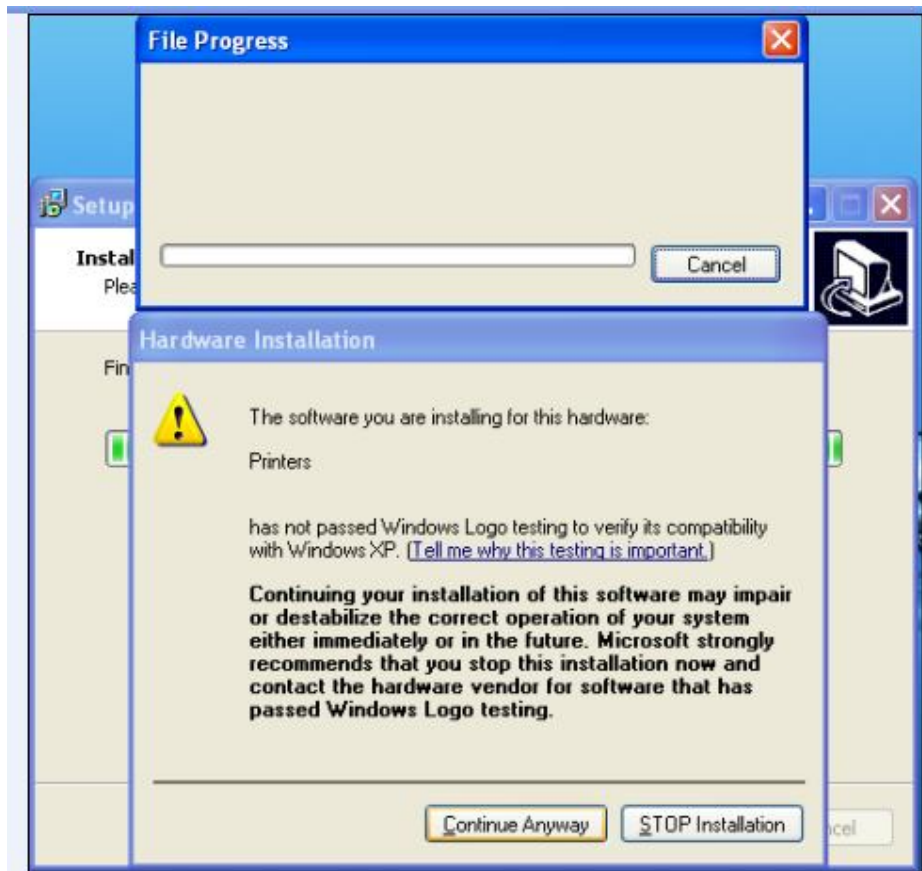


Step6: In this setting screen, you just have to set option "Printer Port Settings".

Ports: choose "USB001", and then click "OK" to continue.



Step7: Just click on "Continue Anyway" to continue.



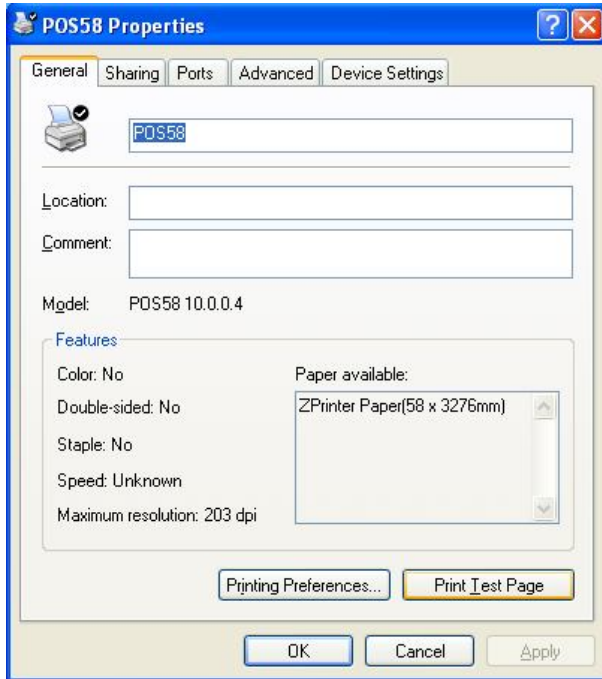
Step8: In this step , if you see restart option, click on "No, I will restart the computer later", then click on "Finish" .



Step9: By now , the printer driver is successfully installed. You will see the Printer Properties sheet(you can also open Printer Properties sheet from

“printers and faxes” in the control panel of computer.)

Now we want to check if the driver works , please click on “General”, then click on “Print Test Page”,

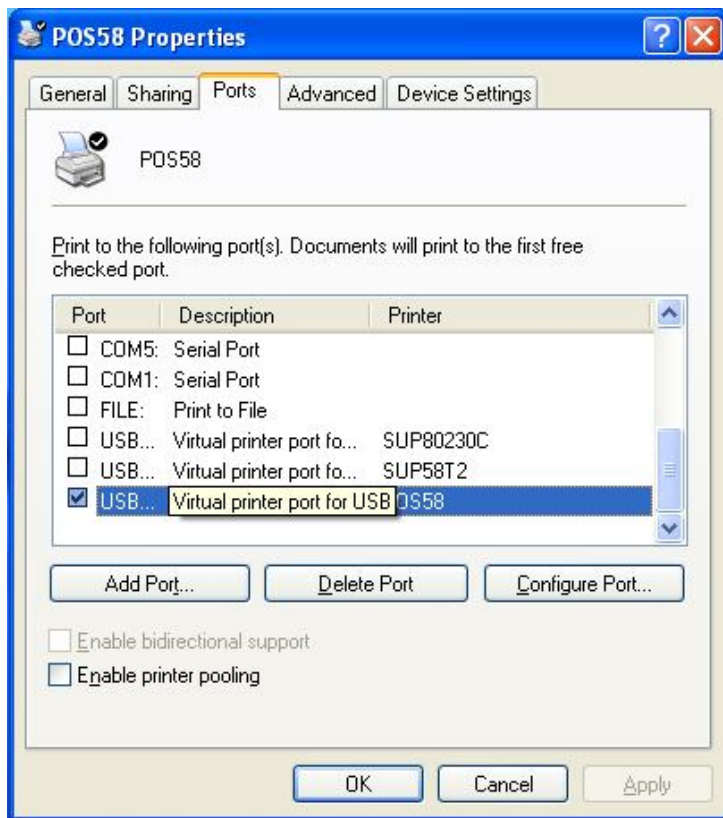


If the printer prints a normal page then it indicates that the driver works successfully. You can use the printer right now, then you don't have to read the content as below.

/**/

If the printer doesn't print anything ,and the driver shows error message. then maybe the Ports setting is wrong,

please click on “Ports”, try to choose the other USB ports, “USB002” then click on “Apply” ,



and next click on " **General**" → click on " **Print Test Page**" to try again.

If the printer prints a normal page, then it indicates that the driver works successfully. You can use the printer right now.

if still not print correctly, try to change port " **USB002**" to " **USB003**" or " **USB004**", then click on " **Apply**", until the printer prints a normal test page.

If you have tried all the usb ports, the printer doesn't work at all, please ask for after-sale supports.

//*****//

8. Cleaning of printer head

Cleaning of printer

When the printer has the following conditions, you should clean the printer head:

- ① The printer does not print clearly and the thermal paper is OK.
- ② The printer Print pages lengthways is not clear
- ③ It's getting too noisy while feeding paper or printing.

Printer head cleaning steps are as follows:

1. Power off the printer and open the paper room cover. Remove the thermal paper roll.
2. If the printer just finished printing , please wait for the print head to cool down.
3. With a soft cotton cloth dipped in ethanol (please make sure there is no dripping), wipe the thermal printer head gently and remove any dust or stains.
4. Wait for the complete evaporation of any ethanol, then place the thermal paper roll back in the printer and close the paper room cover, then print a test page.

Notes :

- When the printer maintenance must ensure that the power is shut down
- Hands or other metal tools away from the surface of the printer head,do not use tweezers to scratch the surface of the printer head and other sensitive parts.
- Do not use gasoline,acetone and other organic solvents for printer head cleaning.

9.General Troubleshooting

1: Why serial port printer printing messy code?

A: Ensure the baud rate setting in the PC is same as the printer baud rate. (we can see printer baud rate from self test page)

2: Self printing test is ok,but printer does not work after driver installation.

A: Recheck the installation according to above installation wizard and see if we selected the right port or ask service center for advice if needed.

3: Malfunction of paper feeding?

A: Use soft brush to clean the paper sensor and try again or send it to the service center for repair.

4 . Malfunction of the indicator light

A: Check the cable connecting way / adapter / power cord / switch on or off? Or contact the service center for repair.

5 . Messy code printing except Arabic numeral printing.

A: language switching incorrectly, please turn on the SW-4 switch on the DIP switches.

6 . Red indicator keep flashing during the printing.

A: Usually it is due to the high temperature of the print head. If printing stopped, please contact the service center for repair.

7. Printing speed is very slow for serial printer

A: follow this path and change the set accordingly : Driver -- Properties -- Device Settings -- Print Mode -- Print as soft font.

8. Water or other liquid spills into the printer

A: Cut off the power, we can dry the main board or printer head with a hair dryer, careful of the temperature (average 50 degree is ok)

9. The printer can't open

A : The battery maybe without electricity , please use power adapter to charge. Then you try to open the printer, if the printer has same problem, please send to service center for repair.

10. Do not search to Bluetooth

A : Please check the main equipment "Bluetooth" whether opened, the communication whether normal, then plug the printer "Bluetooth Module" again. the printer re-connect, if there are problems, please send the specified location repair.