
User Guide

Nokia Wireless Loopset LPS-6

NOKIA

User Guide

Nokia Wireless Loopset LPS-6

Contents

Safety	3
Get started	4
Keys and parts	4
Charge the battery	4
Take the loopset into use	5
Pair and connect your loopset with your phone	6
Pair and connect your loopset using NFC	6
Basic use	8
Make and receive calls	8
Handle two calls	8
Listen wirelessly with Bluetooth	8
Use USB audio connection	9
Change the volume	9
Clear settings or reset your loopset	10
Troubleshooting	11
Product and safety information	12
Copyrights and other notices	16
Copyrights and other notices	19

Safety

Read these simple guidelines. Not following them may be dangerous or illegal.

We invite you to read the instructions on this guide before using the device.



SWITCH OFF IN RESTRICTED AREAS

Switch the device off when mobile phone use is not allowed or when it may cause interference or danger, for example, in aircraft, in hospitals or near medical equipment, fuel, chemicals, or blasting areas. Obey all instructions in restricted areas.



ROAD SAFETY COMES FIRST

Obey all local laws. Always keep your hands free to operate the vehicle while driving. Your first consideration while driving should be road safety.



INTERFERENCE

All wireless devices may be susceptible to interference, which could affect performance.



QUALIFIED SERVICE

Only qualified personnel may install or repair this product.



BATTERIES, CHARGERS, AND OTHER ACCESSORIES

Use only batteries, chargers, and other accessories approved by Nokia for use with this device. Do not connect incompatible products.



KEEP YOUR DEVICE DRY

Your device is not water-resistant. Keep it dry.

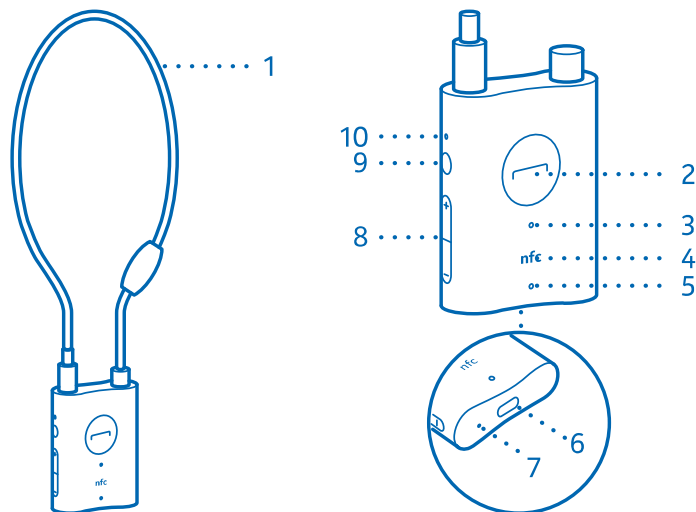
PROTECT YOUR HEARING

To prevent possible hearing damage, do not listen at high volume levels for long periods. Exercise caution when holding your device near your ear while the loudspeaker is in use.

Get started

Keys and parts

- 1 Neck loop
- 2 Vibrating alert motor
- 3 Multifunction key
- 4 Microphone
- 5 NFC area
- 6 USB connector
- 7 Charging status indicator
- 8 Volume keys
- 9 Power key
- 10 Bluetooth connection indicator



Charge the battery

1. Connect the charger to a wall outlet.
2. Connect the charger cable to the charger connector.

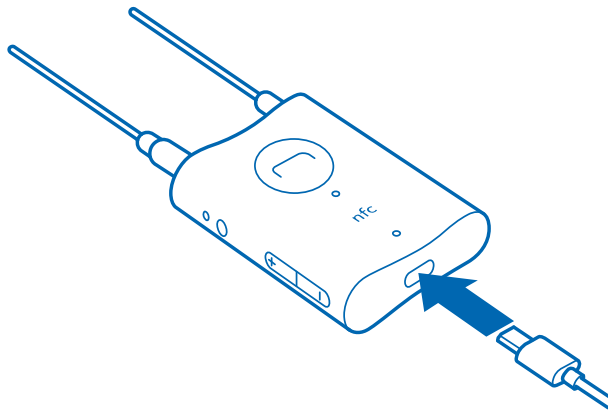
The charging status indicator shows the progress of the charging, turning from red to yellow and finally to green when the battery is fully charged. Charging the battery fully may take up to 2 hours.

3. When the battery is fully charged, disconnect the charger from the loopset first, then from the wall outlet.

The fully charged battery has power for up to 12 hours of talk time or up to 300 hours of standby time.

★ **Tip:** To check the charging status when you're connected to a phone, press the power key. The charging status indicator shows the battery level (red=low, yellow=good, green=full).

When the battery is close to discharged, the loopset vibrates and beeps about every 5 minutes, and the charging status indicator quickly flashes red.



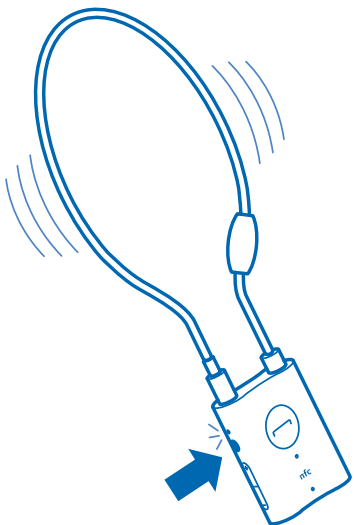
Take the loopset into use

1. If necessary, pull out the neck loop plug.
2. Place the neck loop around your neck, and push the plug in the connector.
3. To switch on, press the power key.

If you haven't paired the loopset with any device before, the loopset vibrates once, and the Bluetooth connection indicator blinks quickly.

4. To enter pairing mode, press the multifunction key for about 2 seconds.

The Bluetooth connection indicator flashes steadily. You can now pair the loopset with a phone.



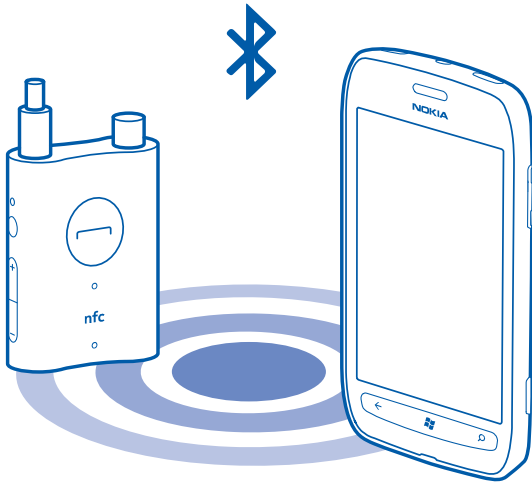
If you have paired the loopset before, the loopset tries to connect to the device that you last paired with. The loopset remembers the last 8 devices that it was paired with. If it doesn't detect the latest one, it tries to connect to the next, and so on.

Switch the loopset off

To switch off, press and hold the power key.

The loopset vibrates twice and the Bluetooth connection indicator stops blinking or flashing.

Pair and connect your loopset with your phone



Make sure your loopset is switched on, and in pairing mode.

1. Activate Bluetooth on your phone, and search for Bluetooth devices.
2. Select the loopset from the list to pair your phone with it.
3. If necessary, enter the passcode 0000.

Your loopset is now paired and connected with your phone. The Bluetooth connection indicator slowly flashes.

When you switch on the loopset the next time, it automatically tries to recreate the latest connection.

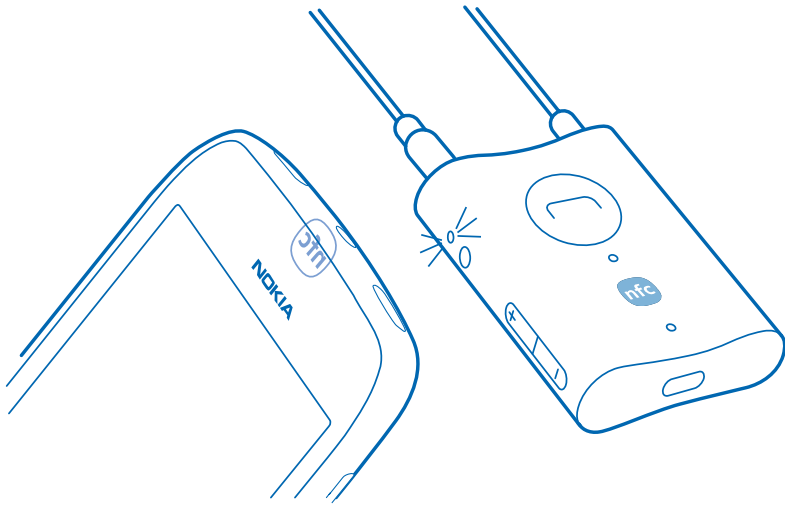
★ **Tip:** When your loopset is connected to a device, but you need to pair with other devices, you can go back to pairing mode by pressing the multifunction key for about 5 seconds.

If the loopset is not connected to a paired device within about 30 minutes, it switches off automatically.

If the connection is lost, the loopset vibrates and the Bluetooth connection indicator quickly blinks.

Pair and connect your loopset using NFC

If your phone supports Near Field Communication (NFC), you can quickly pair and connect your loopset, or switch the connection between paired devices.



1. On your phone, make sure that NFC is on and the phone keys and screen are unlocked.
2. Make sure the loopset is on and in pairing mode.
3. Tap the NFC area of the loopset with the NFC area of the phone.
4. If asked, accept the connection on your phone.

Disconnect or reconnect a paired device

To disconnect a paired and connected device from your loopset, tap the NFC areas together. To reconnect, tap the NFC areas together again.

Basic use

Make and receive calls

Make sure that you're wearing the loopset properly, the loopset is connected to your phone, and your hearing aid is in T-mode or MT-mode.



1. To make a call, use the phone keys to dial the number.
2. To answer or end a call, press the multifunction key, or use the phone keys.
3. To reject an incoming call, press the multifunction key twice.
4. To re-dial the number you last called, press the multifunction key twice.

★ **Tip:** If your loopset is switched off when there's an incoming call on the phone you last connected the loopset with, just switch on the loopset, and it answers the call.

Handle two calls

Make sure that your phone supports Bluetooth hands-free profile 1.6, and that call waiting is available on your phone. Call waiting is a network service.

1. To answer a waiting call and end the active call, press the multifunction key.
2. To answer a waiting call and put the active call on hold, press and hold the multifunction key for about 2 seconds.
3. To end the active call and make the call on hold active, press the multifunction key.
4. To switch between the active call and the call on hold, press and hold the multifunction key for about 2 seconds.

Listen wirelessly with Bluetooth

You can, for example, listen to music on your computer using a Bluetooth connection.

1. Connect the loopset to your phone or Bluetooth audio source, for example, your computer.

2. To play music, use the playback controls on the connected device.

Use USB audio connection

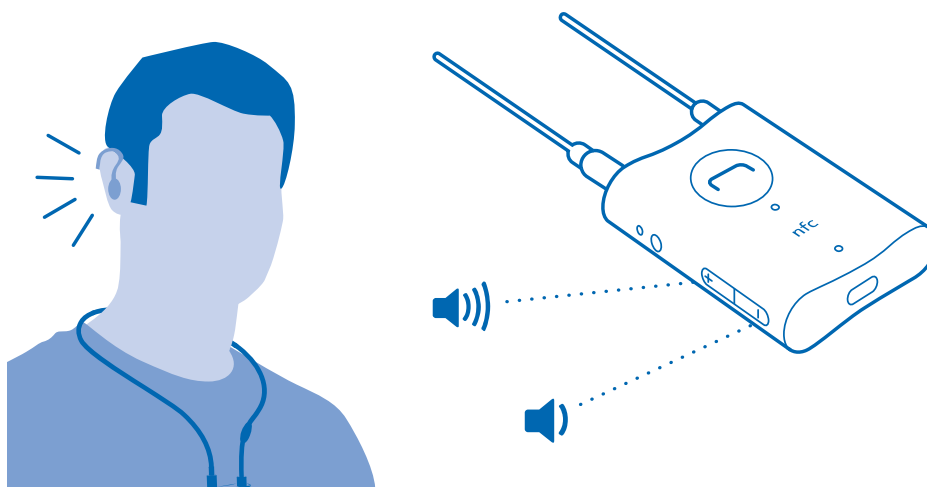
You can connect your loopset to a compatible device with a USB cable. This way you can make internet calls or listen to music, for example, on your computer.

1. Connect a compatible USB cable to another device.
2. Use the controls on the device to handle the sound.

★ **Tip:** When you're connected, for example, to a computer with a USB cable, the battery is being charged.

Change the volume

Press the volume keys up or down during a call or when listening to an audio source.



During a call, you don't need to adjust the volume on both your loopset and your phone, as the volume controls are synchronised. Use the volume keys on one or the other. When you listen to a source other than your phone using Bluetooth (A2DP mode), both controls affect the volume.

Change the sidetone volume

Sidetone is the sound that the loopset microphone routes to your hearing aid during a call to help you hear your own voice.

During a call, press the multifunction key twice, and press a volume key within 15 seconds.

Clear settings or reset your loopset

1. To clear pairing and volume settings, press and hold the multifunction key for more than 8 seconds.
2. To reset, connect the loopset to a charger, and press and hold the multifunction key.

Resetting doesn't clear the settings.

Troubleshooting

- If you can't connect the loopset to your compatible device, check that the loopset is charged, switched on, and paired with the device. Also check that the loopset is within 10 metres (33 feet) of the device that you have connected to it. If you still have problems, reset the loopset.
- To reduce the noise caused by electromagnetic disturbances from the surroundings, try moving to a different place in the room or area. Try also lowering the volume in your hearing aid, and at the same time increasing the volume on the loopset.

Product and safety information

Take care of your device

Handle your device, charger and accessories with care. The following suggestions help you protect your warranty coverage.

- Keep the device dry. Precipitation, humidity, and all types of liquids or moisture can contain minerals that corrode electronic circuits. If your device gets wet, let the device dry.
- Do not use or store the device in dusty or dirty areas.
- Do not store the device in high temperatures.
- Do not store the device in cold temperatures. When the device warms to its normal temperature, moisture can form inside the device and damage it.
- Do not open the device.
- Unauthorised modifications may damage the device and violate regulations governing radio devices.
- Do not drop, knock, or shake the device. Rough handling can break it.
- Only use a soft, clean, dry cloth to clean the surface of the device.

Recycle



This Product complies with AEEE Regulation. Always return your used electronic products, batteries, and packaging materials to dedicated collection points. This way you help prevent uncontrolled waste disposal and promote the recycling of materials. All materials of the device can be recovered as materials and energy. Check how to recycle your Nokia products at www.nokia.com/recycle.



廢電池請回收

According to EPA (Environmental Protection Administration, Executive Yuan) regulations, please return your used batteries to the designated collection points.

Recycle



When this device has reached the end of its working life, all of its materials can be recovered as materials and energy. For info on how to recycle your old Nokia products and where to find collection sites, go to www.nokia.com/recycle, or call the Nokia Contact Center.

Recycle packaging and user guides at your local recycling scheme.

When you cooperate and deliver all these materials to one of the available collection sites, you contribute in helping the environment and help to ensure the health of future generations.

All electrical and electronic products and batteries may contain recycleable metals and other potentially hazardous substances and must be taken to their respective collection sites at the end of their working life. Under no circumstances should you break open a battery or other related materials. Do not dispose of these products as unsorted municipal waste, as this may cause contamination of the environment or risks to human health. All Nokia products are in compliance to the applicable industry international production standards and to all requirements defined by the competent government agencies. For more info on the environmental attributes of your device, see www.nokia.com/ecoprofile (in English).

Crossed-out wheeled-bin symbol



The crossed-out wheeled-bin symbol on your product, battery, literature, or packaging reminds you that all electrical and electronic products and batteries must be taken to separate collection at the end of their working life. This requirement applies

in the European Union and Turkey. Do not dispose of these products as unsorted municipal waste: take them for recycling. For info on your nearest recycling point, check with your local waste authority, or go to www.nokia.com/support. For more info on the environmental attributes of your device, see www.nokia.com/ecoprofile.



部件名称 (Parts)	有毒有害物质或元素 (Hazardous Substance)					
	铅 (Pb)	汞 (Hg)	镉 (Cd)	六价铬 (Cr ⁶⁺)	多溴联苯 (PBB)	多溴二苯醚 (PBDE)
主机 (Phone)	×	○	○	○	○	○
电池 (Battery)	×	○	○	○	○	○
附件 (Accessories)	×	○	○	○	○	○

○：表示该有毒有害物质在该部件所有均质材料中的含量均在 SJ/T 11363-2006 标准规定的限量要求以下。
 ×：表示该有毒有害物质至少在该部件的某一均质材料中的含量超出 SJ/T 11363-2006 标准规定的限量要求。
 注：本产品标有“×”的原因是：现阶段没有可供选择的替代技术或部件。

Battery and charger info

Your device has an internal, non-removable, rechargeable battery. Do not attempt to remove the battery, as you may damage the device. To replace the battery, take the device to the nearest authorised service facility.

Charge your device with XX-XXX charger. Charger plug type may vary. The compatible charger cable is xx-xxx.

The battery can be charged and discharged hundreds of times, but it will eventually wear out. When the operating times are noticeably shorter than normal, to replace the battery, take the device to the nearest authorised service facility.

Battery safety

To unplug a charger or an accessory, hold and pull the plug, not the cord.

When your charger is not in use, unplug it. Do not leave a fully charged battery connected to a charger, as overcharging may shorten the battery's lifetime. If left unused, a fully charged battery will lose its charge over time.

Always keep the battery between 15°C and 25°C (59°F and 77°F). Extreme temperatures reduce the capacity and lifetime of the battery. A device with a hot or cold battery may not work temporarily.

Do not dispose of batteries in a fire as they may explode. Obey local regulations. Recycle when possible. Do not dispose as household waste.

Do not dismantle, cut, crush, bend, puncture, or otherwise damage the battery in any way. If a battery leaks, do not let liquid touch skin or eyes. If this happens, immediately flush the affected areas with water, or seek medical help. Do not modify, attempt to insert foreign objects into the battery, or immerse or expose it to water or other liquids. Batteries may explode if damaged.

Use the battery and charger for their intended purposes only. Improper use, or use of unapproved or incompatible batteries or chargers may present a risk of fire, explosion, or other hazard, and may invalidate any approval or warranty. If you believe the battery or charger is damaged, take it to a service centre before continuing to use it. Never use a damaged battery or charger. Only use the charger indoors.

מידע בטיחותי חיוני - מטען/סוללה


. מטען

- מנע חדירת מים או לחות.
- הרחק אותו מטמפרטורות קיצוניות כגון רדיאטור או תנור חם או מקום הפתוח לשמש.
- 'הרחק אותו מנרות דולקים, סיגריות וסיגרים דלוקים, להבה גלויה וכו'.
- מנע נפילת עצמים או התוות נזולים כולל חומצות כלשהן על המטען.
- חבר אותו רק לשקע המספק רמת מתח המסומן על המטען.
- כדי להקין סכנת נזק לכבל החשמלי, אל תנתק את המטען מהשקע על-ידי משיכת הכבל. אחוז במטען ומשוך אותו מהשקע.
- ודא שהכבל מנותב כך שאין סכנה שידרכו עליו או שייכשלו בו.
- אזהרה: לעולם אין להחליף את הפתיל או התקע בחליפים לא מקוריים. חיבור לקוי עלול לגרום להתחשמלות המשתמש.
- יש להקפיד ולתחזק את התקן ניתוק במצב תפעולי מוכן לשימוש.
- בשימוש עם כבל מאריך יש לוודא תקינות מוליך הארקה שבכבל.
- 'מיועד לשימוש פנים בלבד ולא במקום החשוף לשמש, גשם וכו'.

סוללה

 **Warning:** מקוריית Nokia סכנה! החלפה שגויה עלולה לגרום לפיצוץ. יש להחליף אך ורק בסוללת.

Battery warnings

 **Warning:** Hazards, such as high temperatures, fires, or explosions can occur. Please retain the following directions and recommendations.

- If the battery is swollen, contact the local manufacturer or Service centre.
- Use only the specified charger.
- Keep the battery away from fire, and do not place in a microwave oven.
- Do not leave battery in a car when the weather is hot.
- Do not use or store the battery in places with high temperatures or that are humid.
- Do not leave the battery on a carpet, blanket, or electrical blanket for extended periods of time.
- Do not keep electronic devices switched on in tightly sealed or contained places for extended periods of time.
- Do not touch the terminals of the battery with conductive materials, such as coins, keys, or watches.
- Use only official batteries that have a manufacturer guarantee.
- Do not disassemble, crush, or penetrate the battery.
- Do not purposely drop the battery from a high height.
- Do not expose the battery to temperatures over 60°C.
- Do not expose the battery to moisture.

Additional safety information

Nokia original accessories

For availability of approved accessories, check with your dealer.

For availability of approved accessories, check with Nokia call center.

An extensive range of accessories is available for your device. For more details, see www.nokia.com/accessories.

All accessories for Nokia devices are supplied in an elegant sales package. An accessory bought without a separate package is not an original Nokia accessory.

How to buy Nokia original accessories:

- 1 Go to an authorised retailer for Nokia original accessories.
For information on the nearest authorised retailer for Nokia accessories, check with a Nokia original accessory distributor.

* When you are buying an accessory, always ask the dealer to issue a separate invoice listing the price and model number, which is helpful in safeguarding your own rights.

2 Visit a Nokia online shop at www.shop.nokia.com.cn.

Practical rules about accessories

- Keep all accessories out of the reach of small children.
- When you disconnect the power cord of any accessory, grasp and pull the plug, not the cord.
- Check regularly that accessories installed in a vehicle are mounted and are operating properly.
- Installation of any complex car accessories must be made by qualified personnel only.

Why use original accessories?

As key components of your handset, batteries and chargers play a critical role in making sure the handset is operating properly and safely. As shown by our long-term customer surveys and after-sales services, handsets fail in many cases by using unapproved accessories, especially unapproved batteries and chargers.

Dangers of using unapproved batteries and chargers

- Short lifetime, with charging and discharging times noticeably less than those of original batteries.
- Consequent much shorter lifetime of the handset, unstable power supply that prevents the handset circuit from functioning properly, which causes lasting damages.
- Poor performance and reliability of the handset, undermined voice quality and frequent breakdown.
- Potential burning or explosion that endangers consumer's safety.

Benefits of using Nokia original accessories

- Adequate safety.
- High quality after-sales maintenance and services that are available to original accessories only.
- Nokia warranty does not apply to handset failures attributable to the use of non-original Nokia accessories.

False: Handset battery is a simple product that combines a group of linked cells within a single package.

True: A number of high-tech designs and high quality raw materials are necessary for a handset battery to provide stable and lasting performance. A battery manufactured in a slipshod way differs from an original product on process, design, and raw material considerably, hence dramatic difference in performance and safety.

False: All accessories with the Nokia trademark are original ones.

True: Nokia original accessories are supplied in an elegant sales package (complying with national package regulations). It is recommended that consumers are aware of counterfeit Nokia accessories on the market. In particular, some dealers might remove the original battery from the supplied handset, which violates our distribution policies and infringes on consumer's rights.

False: Despite low quality, counterfeit battery is much cheaper and is worthwhile even if it requires frequent replacement.


True: Unapproved batteries and chargers are not only of short lifetime and poor performance, but will noticeably undermine the handset's performance and reduce its lifetime. It is also deprived of comprehensive after-sales maintenance and repair. Most important, unapproved batteries and chargers pose safety threats to consumers. Losses in these regards far exceed the savings on price. In fact, with inferior raw materials and irregular designs, some counterfeit batteries cost less than 1/10 of original products.

Battery

Type:

Talk time:

Standby:

 **Important:** Battery talk and stand-by times are estimates and only possible under optimal network conditions. Ringing tones, hands free call handling, use in digital mode, and other features will also consume the battery, and the amount of time a device is used for calls will affect its stand-by time. Likewise, the amount of time that the device is turned on and in the standby mode will affect its talk time.

Copyrights and other notices

DECLARATION OF CONFORMITY

CE 0560

Hereby, NOKIA CORPORATION declares that this product is in compliance with the essential requirements and other relevant provisions of Directive 1999/5/EC. A copy of the Declaration of Conformity can be found at www.nokia.com/global/declaration/declaration-of-conformity (in English).



/ ()

© 2012 Nokia. All rights reserved. are trademarks or registered trademarks of Nokia Corporation. Other product and company names mentioned herein may be trademarks or tradenames of their respective owners.

© 2012 Nokia. All rights reserved. are trademarks or registered trademarks of Nokia Corporation.

Downloading of maps, games, music and videos and uploading of images and videos may involve transferring large amounts of data. Your service provider may charge for the data transmission. The availability of particular products, services and features may vary by region. Please check with your local call center for further details and availability of language options.

Reproduction, transfer, distribution, or storage of part or all of the contents in this document in any form without the prior written permission of Nokia is prohibited. Nokia operates a policy of continuous development. Nokia reserves the right to make changes and improvements to any of the products described in this document without prior notice.

The Bluetooth word mark and logos are owned by the Bluetooth SIG, Inc. and any use of such marks by Nokia is under license.

This product is licensed under the MPEG-4 Visual Patent Portfolio License (i) for personal and noncommercial use in connection with information which has been encoded in compliance with the MPEG-4 Visual Standard by a consumer engaged in a personal and noncommercial activity and (ii) for use in connection with MPEG-4 video provided by a licensed video provider. No license is granted or shall be implied for any other use. Additional information, including that related to promotional, internal, and commercial uses, may be obtained from MPEG LA, LLC. See www.mpegla.com (in English).

To the maximum extent permitted by applicable law, under no circumstances shall Nokia or any of its licensors be responsible for any loss of data or income or any special, incidental, consequential or indirect damages howsoever caused.

The contents of this document are provided "as is". Except as required by applicable law, no warranties of any kind, either express or implied, including, but not limited to, the implied warranties of merchantability and fitness for a particular purpose, are made in relation to the accuracy, reliability or contents of this document. Nokia reserves the right to revise this document or withdraw it at any time without prior notice.

For the most current product info, please refer to www.nokia.com.cn.

For the most current product info, please refer to www.nokia.com.hk.

For the most current product info, please refer to www.nokia.com.tw.

The availability of products, features, apps and services may vary by region. For more info, contact your call center or your service provider. This device may contain commodities, technology or software subject to export laws and regulations from the US and other countries. Diversion contrary to law is prohibited.

The availability of products may vary by region. For more info, contact your Nokia dealer. This device may contain commodities, technology or software subject to export laws and regulations from the US and other countries. Diversion contrary to law is prohibited.

Nokia does not provide a warranty for or take any responsibility for the functionality, content, or end-user support of third-party apps provided with your device. By using an app, you acknowledge that the app is provided as is. Nokia does not make any representations, provide a warranty, or take any responsibility for the functionality, content, or end-user support of third-party apps provided with your device.

FCC/INDUSTRY CANADA NOTICEFCC/INDUSTRY CANADA/MEXICO NOTICE

This device complies with part 15 of the FCC rules and Industry Canada licence-exempt RSS standard(s). Operation is subject to the following two conditions: (1) This device may not cause harmful interference, and (2) this device must accept any interference received, including interference that may cause undesired operation. Any changes or modifications not expressly approved by Nokia could void the user's authority to operate this equipment.

Note: This equipment has been tested and found to comply with the limits for a Class B digital device, pursuant to part 15 of the FCC Rules. These limits are designed to provide reasonable protection against harmful interference in a residential installation. This equipment generates, uses and can radiate radio frequency energy and, if not installed and used in accordance with the instructions, may cause harmful interference to radio communications. However, there is no guarantee that interference will not occur in a particular installation. If this equipment does cause harmful interference to radio or television reception, which can be determined by turning the equipment off and on, the user is encouraged to try to correct the interference by one or more of the following measures:

- Reorient or relocate the receiving antenna.
- Increase the separation between the equipment and receiver.
- Connect the equipment into an outlet on a circuit different from that to which the receiver is connected.
- Consult the dealer or an experienced radio/TV technician for help.

NOTE: FCC Radiation Exposure Statement: This equipment complies with FCC radiation exposure limits set forth for an uncontrolled environment. This transmitter must not be co-located or operating in conjunction with any other antenna or transmitter.

FCC NOTICEFCC/MEXICO NOTICE

This device complies with part 15 of the FCC rules. Operation is subject to the following two conditions: (1) This device may not cause harmful interference, and (2) this device must accept any interference received, including interference that may cause undesired operation. Any changes or modifications not expressly approved by Nokia could void the user's authority to operate this equipment.

Note: This equipment has been tested and found to comply with the limits for a Class B digital device, pursuant to part 15 of the FCC Rules. These limits are designed to provide reasonable protection against harmful interference in a residential installation. This equipment generates, uses and can radiate radio frequency energy and, if not installed and used in accordance with the instructions, may cause harmful interference to radio communications. However, there is no guarantee that interference will not occur in a particular installation. If this equipment does cause harmful interference to radio or television reception, which can be determined by turning the equipment off and on, the user is encouraged to try to correct the interference by one or more of the following measures:

- Reorient or relocate the receiving antenna.
- Increase the separation between the equipment and receiver.
- Connect the equipment into an outlet on a circuit different from that to which the receiver is connected.
- Consult the dealer or an experienced radio/TV technician for help.

NOTE: FCC Radiation Exposure Statement: This equipment complies with FCC radiation exposure limits set forth for an uncontrolled environment. This transmitter must not be co-located or operating in conjunction with any other antenna or transmitter.

Uygunluk Değerlendirme Kuruluşu

Det Norske Veritas Region Norge Veritasveien 1, N-1322 Høvik Tel: +47 67 579900, Fax: +47 67 57 99 11 Norway

Üretici Firma

Nokia Corporation, Keilalahdentie 4, 02150 Espoo, Finlandiya Tel: +358 7180 08000 Faks: +358 7180 38226

Brand: Nokia

Model:

CNC: xx-xxxx

ANATEL

”Este equipamento opera em caráter secundário, isto é, não tem direito à proteção contra interferência prejudicial, mesmo de estações do mesmo tipo, e não pode causar interferência a sistemas operando em caráter primário.”

www.anatel.gov.br

Nokia Corporation
P.O.Box 226
FIN-00045 Nokia Group
Finland

Equipment name (model name): Specified micro-radio wireless equipment for wireless data communication system:

Applicant's name: NOKIA CORPORATION

Manufacturer/Country of origin: NOKIA TMC Ltd / KOREA

Limited warranty: the Warranty Certificate can be found in the product package and must be presented whenever a service is provided in an Authorized Nokia Service Center.

Copyrights and other notices

DECLARATION OF CONFORMITY

CE 0560

Hereby, NOKIA CORPORATION declares that this product is in compliance with the essential requirements and other relevant provisions of Directive 1999/5/EC. A copy of the Declaration of Conformity can be found at www.nokia.com/global/declaration/declaration-of-conformity (in English).



/ ()

© 2012 Nokia. All rights reserved. are trademarks or registered trademarks of Nokia Corporation. Other product and company names mentioned herein may be trademarks or tradenames of their respective owners.

© 2012 Nokia. All rights reserved. are trademarks or registered trademarks of Nokia Corporation.

Downloading of maps, games, music and videos and uploading of images and videos may involve transferring large amounts of data. Your service provider may charge for the data transmission. The availability of particular products, services and features may vary by region. Please check with your local call center for further details and availability of language options.

Reproduction, transfer, distribution, or storage of part or all of the contents in this document in any form without the prior written permission of Nokia is prohibited. Nokia operates a policy of continuous development. Nokia reserves the right to make changes and improvements to any of the products described in this document without prior notice.

The Bluetooth word mark and logos are owned by the Bluetooth SIG, Inc. and any use of such marks by Nokia is under license.

This product is licensed under the MPEG-4 Visual Patent Portfolio License (i) for personal and noncommercial use in connection with information which has been encoded in compliance with the MPEG-4 Visual Standard by a consumer engaged in a personal and noncommercial activity and (ii) for use in connection with MPEG-4 video provided by a licensed video provider. No license is granted or shall be implied for any other use. Additional information, including that related to promotional, internal, and commercial uses, may be obtained from MPEG LA, LLC. See www.mpegla.com (in English).

To the maximum extent permitted by applicable law, under no circumstances shall Nokia or any of its licensors be responsible for any loss of data or income or any special, incidental, consequential or indirect damages howsoever caused.

The contents of this document are provided "as is". Except as required by applicable law, no warranties of any kind, either express or implied, including, but not limited to, the implied warranties of merchantability and fitness for a particular purpose, are made in relation to the accuracy, reliability or contents of this document. Nokia reserves the right to revise this document or withdraw it at any time without prior notice.

For the most current product info, please refer to www.nokia.com.cn.

For the most current product info, please refer to www.nokia.com.hk.

For the most current product info, please refer to www.nokia.com.tw.

The availability of products, features, apps and services may vary by region. For more info, contact your call center or your service provider. This device may contain commodities, technology or software subject to export laws and regulations from the US and other countries. Diversion contrary to law is prohibited.

The availability of products may vary by region. For more info, contact your Nokia dealer. This device may contain commodities, technology or software subject to export laws and regulations from the US and other countries. Diversion contrary to law is prohibited.

Nokia does not provide a warranty for or take any responsibility for the functionality, content, or end-user support of third-party apps provided with your device. By using an app, you acknowledge that the app is provided as is. Nokia does not make any representations, provide a warranty, or take any responsibility for the functionality, content, or end-user support of third-party apps provided with your device.

FCC/INDUSTRY CANADA NOTICEFCC/INDUSTRY CANADA/MEXICO NOTICE

This device complies with part 15 of the FCC rules and Industry Canada licence-exempt RSS standard(s). Operation is subject to the following two conditions: (1) This device may not cause harmful interference, and (2) this device must accept any interference received, including interference that may cause undesired operation. Any changes or modifications not expressly approved by Nokia could void the user's authority to operate this equipment.

Note: This equipment has been tested and found to comply with the limits for a Class B digital device, pursuant to part 15 of the FCC Rules. These limits are designed to provide reasonable protection against harmful interference in a residential installation. This equipment generates, uses and can radiate radio frequency energy and, if not installed and used in accordance with the instructions, may cause harmful interference to radio communications. However, there is no guarantee that interference will not occur in a particular installation. If this equipment does cause harmful interference to radio or television reception, which can be determined by turning the equipment off and on, the user is encouraged to try to correct the interference by one or more of the following measures:

- Reorient or relocate the receiving antenna.
- Increase the separation between the equipment and receiver.
- Connect the equipment into an outlet on a circuit different from that to which the receiver is connected.
- Consult the dealer or an experienced radio/TV technician for help.

NOTE: FCC Radiation Exposure Statement: This equipment complies with FCC radiation exposure limits set forth for an uncontrolled environment. This transmitter must not be co-located or operating in conjunction with any other antenna or transmitter.

FCC NOTICEFCC/MEXICO NOTICE

This device complies with part 15 of the FCC rules. Operation is subject to the following two conditions: (1) This device may not cause harmful interference, and (2) this device must accept any interference received, including interference that may cause undesired operation. Any changes or modifications not expressly approved by Nokia could void the user's authority to operate this equipment.

Note: This equipment has been tested and found to comply with the limits for a Class B digital device, pursuant to part 15 of the FCC Rules. These limits are designed to provide reasonable protection against harmful interference in a residential installation. This equipment generates, uses and can radiate radio frequency energy and, if not installed and used in accordance with the instructions, may cause harmful interference to radio communications. However, there is no guarantee that interference will not occur in a particular installation. If this equipment does cause harmful interference to radio or television reception, which can be determined by turning the equipment off and on, the user is encouraged to try to correct the interference by one or more of the following measures:

- Reorient or relocate the receiving antenna.
- Increase the separation between the equipment and receiver.
- Connect the equipment into an outlet on a circuit different from that to which the receiver is connected.
- Consult the dealer or an experienced radio/TV technician for help.

NOTE: FCC Radiation Exposure Statement: This equipment complies with FCC radiation exposure limits set forth for an uncontrolled environment. This transmitter must not be co-located or operating in conjunction with any other antenna or transmitter.

Uygunluk Değerlendirme Kuruluşu

Det Norske Veritas Region Norge Veritasveien 1, N-1322 Høvik Tel: +47 67 579900, Fax: +47 67 57 99 11 Norway

Üretici Firma

Nokia Corporation, Keilalahdentie 4, 02150 Espoo, Finlandiya Tel: +358 7180 08000 Faks: +358 7180 38226

Brand: Nokia

Model:

CNC: xx-xxxx

ANATEL

”Este equipamento opera em caráter secundário, isto é, não tem direito à proteção contra interferência prejudicial, mesmo de estações do mesmo tipo, e não pode causar interferência a sistemas operando em caráter primário.”

www.anatel.gov.br

Nokia Corporation
P.O.Box 226
FIN-00045 Nokia Group
Finland

Equipment name (model name): Specified micro-radio wireless equipment for wireless data communication system:

Applicant's name: NOKIA CORPORATION

Manufacturer/Country of origin: NOKIA TMC Ltd / KOREA

Limited warranty: the Warranty Certificate can be found in the product package and must be presented whenever a service is provided in an Authorized Nokia Service Center.