

# Cleansui

## Under sink water purifier

### Instruction manual

Thank you very much for purchasing Cleansui. Read these instructions carefully before use. Installation instruction and a warranty card are included with this product and must be retained for future reference.

### Contents

- |                                  |                             |
|----------------------------------|-----------------------------|
| 1. About this Product            | 7. Operating Instructions   |
| 2. Safety Precautions            | 8. Maintenance              |
| 3. Important Notes for Operation | 9. Troubleshooting          |
| 4. Irregular Water Flow          | 10. Replacing the Cartridge |
| 5. Names of Parts                | 11. After-sales Service     |
| 6. Features of Cartridge         | 12. Specifications          |
|                                  | ● Warranty                  |

## 1. About this Product

- (A501ZCBE) consists of the faucet (A501) and cartridge (UZC2000E).
- Unique triple filtration system with high performance cartridge removes 13 substances based on JIS S 3201.
- Use for drinking or cooking only.
- The cartridge cannot remove salt (seawater) or metallic ions (except lead) contained in water. It is also not capable of converting hard water into soft water.
- Cleansui filtration system works when the water pressure is from 0.07MPa to 0.35MPa.

**Please read the instruction manual carefully before use.**

## 2. Safety Precautions

Failure to follow the safety precautions can lead to a serious accident. They contain extremely important information related to safety and all the precautions must be observed without fail.

- The degrees of potential danger and damage that can be caused from any improper usage, ignoring the contents of the safety precautions are explained below.



**Attention**

Indicates failure to observe these instructions can cause minor injury to the user or damage to surrounding properties.

- The following warning labels indicate the items you should follow for your safety.



**Prohibition**

Indicates “prohibited” actions.



**Do Not Disassemble**

Indicates the parts which “should not be removed”



**Instruction**

Indicates “mandatory instructions”.



**Attention**

### Instructions prior to use



**Instruction**

- **Please use tap water that meets the local standards for drinking water.**  
It cannot be used to purify hot-spring water, well water or any other water that contains large amounts of impurities. Uses of the water filter in this way may be detrimental to your health.
- **If any part of the system is damaged (such as damaged coating), do not touch the damaged area.**  
This may cause injury, if there is damage, please contact the dealer.

### Handling of filtered water



**Instruction**

- **Please consume filtered water as soon as possible**  
When you store filtered water, please store it in a clean container with a sealed cap in a refrigerator. Because there is no residual chlorine in the filtered water, bacteria may easily multiply.



**Prohibition**

- **Do not use filtered water in fish tanks, etc.**  
When the filtration performance declines through usage, residual chlorine may remain in filtered water. This may be fatal to fish.

### To keep the system clean



**Instruction**

- **Please run the filtered water for at least 15 seconds before using your Cleansui for the first time everyday. (for UZC2000E)**  
Because there is no residual chlorine in the filtered water left in the system, bacteria may easily multiply. This may cause damage to your health.
- **Please run the filtered water for at least 1 minute to discharge accumulated water when Cleansui has not been used for 2 or more days.**  
Because there is no residual chlorine in the filtered water left in the system, bacteria may easily multiply. This may cause damage to your health.



# Attention

## To keep the system clean



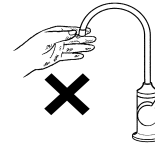
Instruction

- **If the system has not been used for more than 2 weeks, please replace the cartridge.**
- **If the wateroutlet becomes soiled by splash back., run filtered water for more than 15 seconds.**  
Bacteria may multiply.
- **For maintenance of the wateroutlet, clean with a sterilized soft toothbrush etc.**  
Bacteria may multiply.
- **If water scale. is mixed into filtered water, change the hoses or faucet.**  
Water scale etc. may be mixed into filtered water due to the condition of usage or the period of usage.



Prohibition

- **Do not touch the wateroutlet with your hand or dishcloth.**  
Bacteria may multiply.



## To prevent filtered water irregularities, leakage and ruptures



Instruction

- **Please connect the cartridge and the hoses correctly.**  
If they are connected incorrectly, it may cause the water to become blackened (activated carbon) or cause damage or leakages.
- **Do not refrigerate the device.**  
Doing so will may result in ruptures and leaks.
- **Please be careful when operating the lever.**  
If the level is closed suddenly, this may result in impacted pipes leading leakage and other damage to the pipes.
- **If seasonings that contain salt, stick to the metal pipes, the hoses or cartridge, please wipe with a clean damp cloth to remove salt.**  
It may cause rust or resin deterioration which leads to damage and leakage.
- **If you place bleach or chemicals. under the sink, close the cap tightly.**  
Volatile bleach or chemicals. may cause damage or leakage.
- **Replace cartridge regularly.**  
Recommended cartridge replacement period is 12 months. Continuous usage of the cartridge which is exhibiting reduced water volume output, due to clogging, may cause damage and leakage, which may result in property damage. Water purifying performance may not be adequate with the cartridge that has passed the recommended replacement period.
- **Ensure that the dedicated faucet is closed when you change cartridge.**  
It may cause property damage by leakages.
- **Make sure that one-touch joint connection is plugged in completely when you change cartridge.**  
It may cause property damage by leakages.
- **Regularly check if there are any leakages or rattling around plumbing.**  
It may cause property damage by leakages.
- **If the equipment is not used for a prolonged period of time, close the stop valve or water main in the plumbing.**  
It may cause leakages.



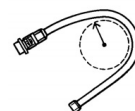
## Attention

### To prevent filtered water irregularities, leakage and ruptures



**Prohibition**

- **Do not block faucet or connect it to other equipment, such as gas boiler etc.**  
It may cause leakages.
- **Do not use detergents that contain abrasive compounds or thinners for cleaning the faucet, cartridge and the hoses.**  
It may cause leakages.
- **Never allow acid-based detergent, chlorine-based bleach or vinegar to contact the faucet, cartridge or the hoses.**  
It may cause leakages.
- **Do not allow hot frying pans or kettles to come in close contact with cartridge or the hoses under the sink. It may cause property damage by leakages.**  
It may cause leakages.
- **Do not exceed the stated bending radius of the hoses.**  
6 cm radius is the utmost limit of bending.  
It may cause reduction of water volume, damage or leakages.
- **Do not apply strong force or shock to the product.**  
It may cause leakages.
- **Do not hang heavy objects on the water-outlet pipe or turn with strong force.**  
It may cause leakages.



**Do Not Disassemble**

- **Do not disassemble the main body or cartridge of the water filter.**  
It may cause leakages.  
If the purifier is not working properly, please refer to the section "9. Troubleshooting" before requesting maintenance or repairs.

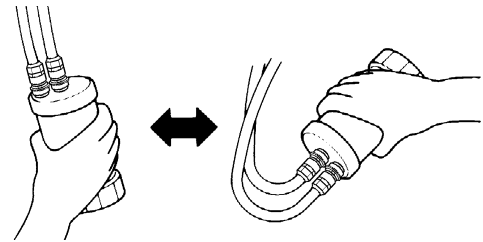
## 3. Important Notes for Operation

- **Use the recommended Cleansui cartridge with Cleansui faucet.**
- **Do not use this device to filter hot water with a temperature of 35°C or higher through "filtration" mode.**  
If you do so, the performance of activated carbon is reduced and the filtered water may temporarily exhibit an unpleasant odour temporarily.
- **If the tap water has not run for a long time or it contains red rust (turbidity), please allow the water to flow for a while before using the water filter to avoid shortening the cartridge life.**
- **In areas with high water pressure, it may cause water to splash. Please reduce the water flow with the stop valve .**
- **In areas with high water pressure, a noise may occur while purifying water. In addition if the water volume is too high, the purifying performance may be unsatisfactory. Please adjust the volume with the faucet lever or stop valve.**
- **Where the water pressure is extremely low, the water may not come out easily after replacing cartridge. In that case, run water for about 10 minutes. The water flow will improve.**

## 4. Irregular Water Flow

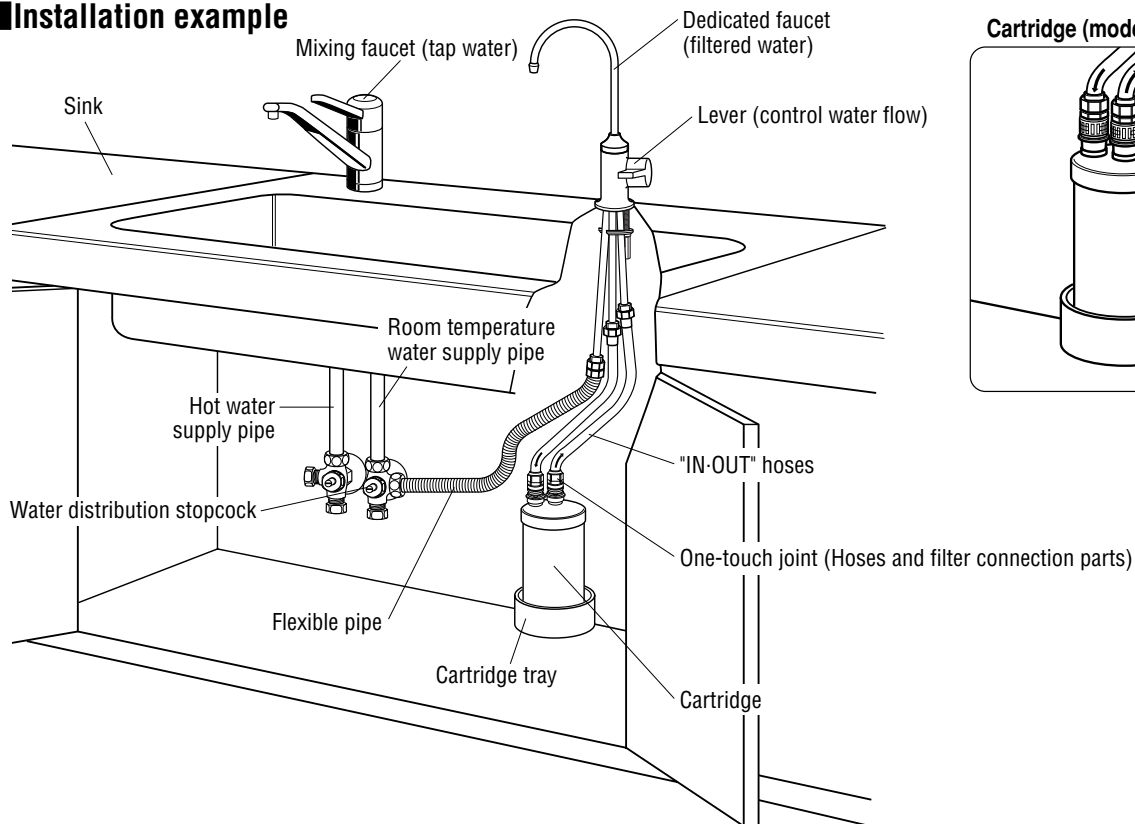
Please follow the steps if the water flow is irregular after the filter has been installed or replaced.

Allow the filtered water to flow while turning the cartridge upside down several times. It will drain out air from inside the cartridge.

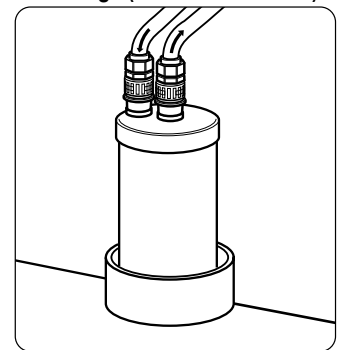


## 5. Names of Parts

### Installation example

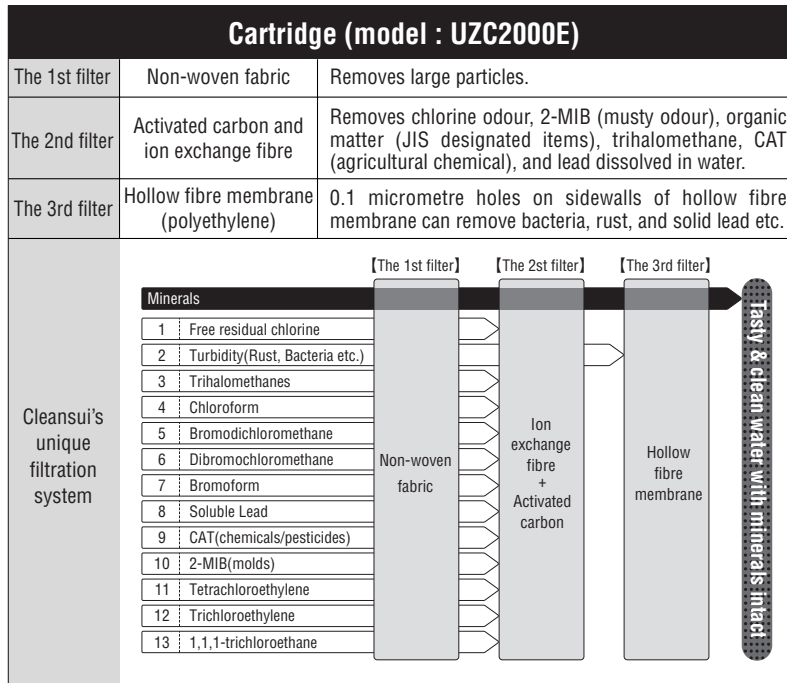


Cartridge (model : UZC2000E)



# 6. Features of Cartridge

1. Cleansui is a unique triple filtration system with high performance cartridge.



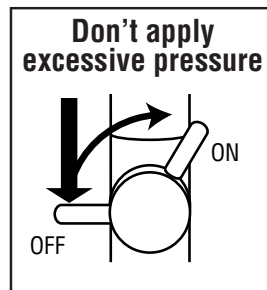
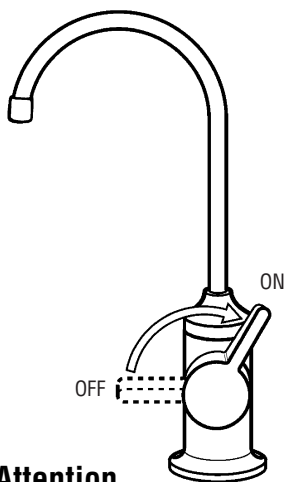
2. Extended cartridge life.

The cartridge life may vary depending on total amount of water flow, water quality and water pressure etc.

3. The one-touch joint system makes filter replacement easy.

# 7. Operating Instructions

■ Operating the lever

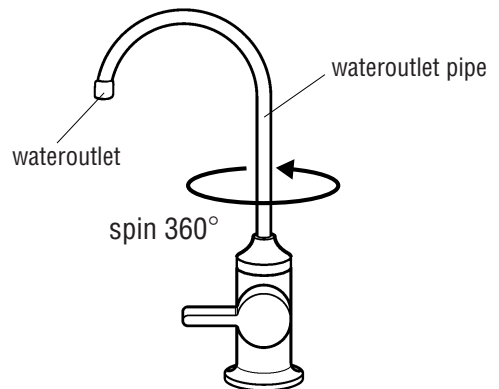


⚠ Attention

Please be careful when you operate the lever. (If you close the lever with too much force, the pipes may be impacted, and it may result in damage and leakages)

■ Operating the wateroutlet pipe

The wateroutlet pipe can be moved 360° circularly. Adjust it to an appropriate position.



⚠ Attention

Please ensure the wateroutlet is positioned/directed into the sink bowl, If positioned beyond the range of the sink, the flow may soak and damage furniture and other property.

● Please use filtered water in the following situation

Cooking, Soups and other dishes, Coffee, Tea, Cleaning of raw vegetables, Making baby milk, and others

※ Please use tap water for dish washing.

# 8. Maintenance

If dirt on the product is not cleaned immediately, it may be difficult to remove afterwards. In order to ensure the product is in optimum condition, we recommend that regular maintenance be performed on the product.

- Please clean the wateroutlet with a sterilized soft toothbrush.
- Please wipe the product with a moist soft cloth and then use a dry cloth to remove any remaining dirt.
- If it is very dirty, use a soft cloth with neutral detergent for first wipe, then wipe it with a wet cloth finally, remove remaining dirt with a dry cloth.

When cleaning it with a sponge that does not require detergent, please do not wipe any text or writing that appears on the product.

## ⚠ Attention

Please do not use the following items, as doing so may cause discolouration or other damage to it, and can cause property damage by leakage.

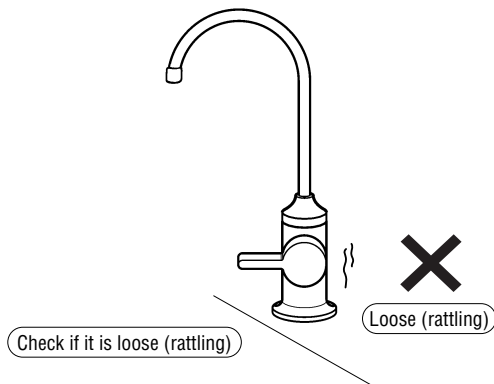
- Detergents containing acid, alkaline or chlorine
- Solvents such as gasoline, lacquer thinners, lacquer, alcohol and oil
- Detergent containing abrasive compounds
- Nylon brushes

## Regular Inspection

In order to use this system safely and effectively, please inspect it regularly.

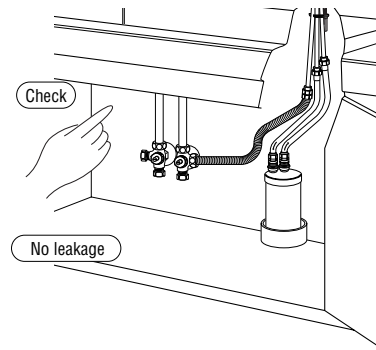
### ■ Faucet loosening (About once a month)

If you continuously use a loose faucet, the stress may be applied to the pipes, and it may cause property damage by leakage.



### ■ Leakage around the pipes (About once a month)

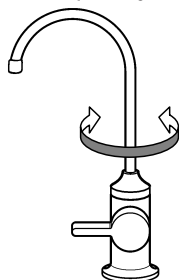
Please check for leakage around the pipes. The leakage is due to ageing and friction, may cause property damage.



### ■ Rotation of the wateroutlet pipe (About once a month)

Rotate the wateroutlet pipe from side to side occasionally.

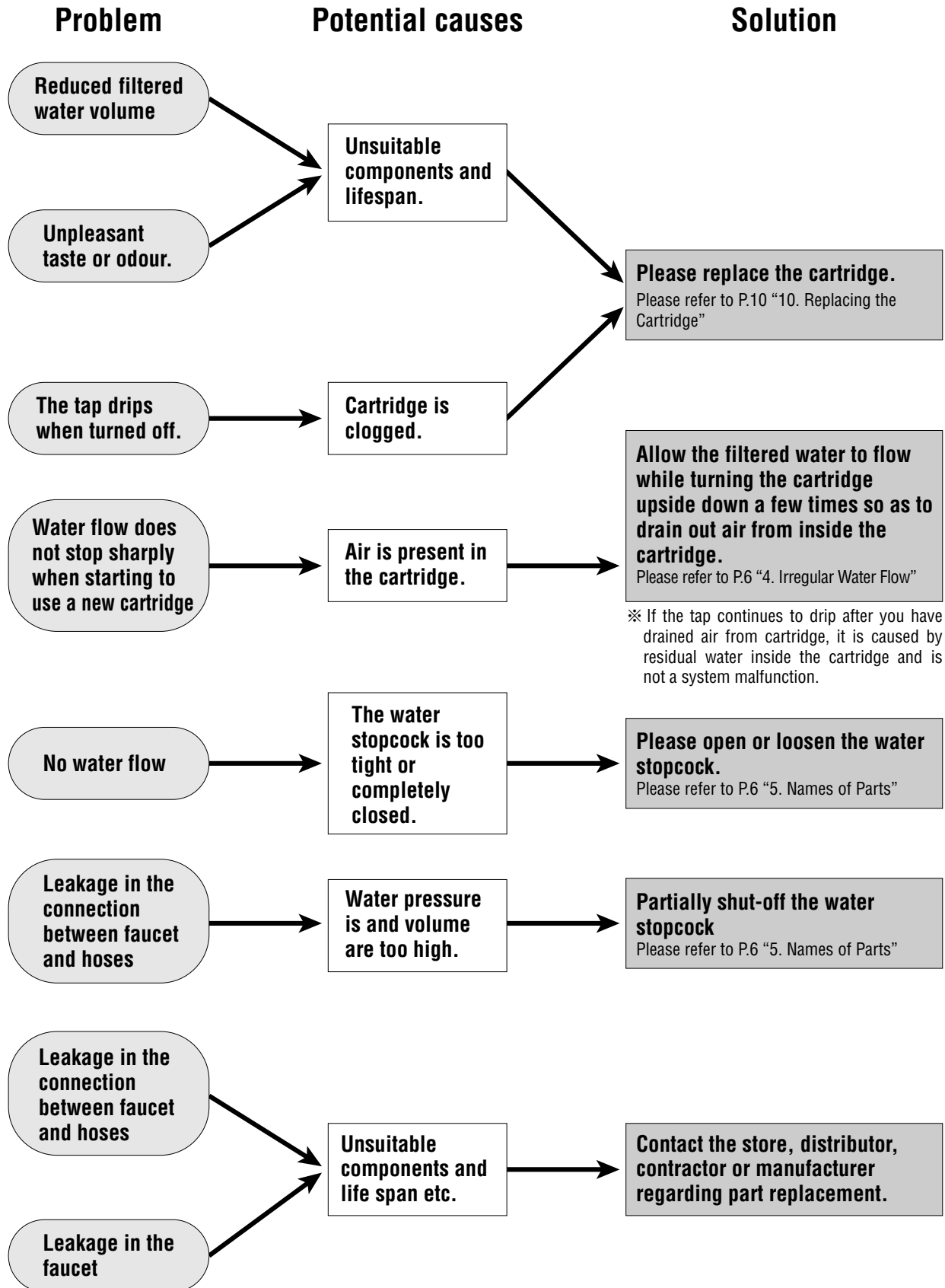
If the wateroutlet pipe is not rotated for a long period of time, it may be affected by water stains which may subsequently affect its rotational capabilities.



Please rotate the wateroutlet pipe from side to side occasionally.



# 9. Troubleshooting



# 10. Replacing the Cartridge

## Replacement period of the cartridge

The replacement period will be approximately one year, but earlier replacement is recommended.

Please replace the cartridge in the following situations.

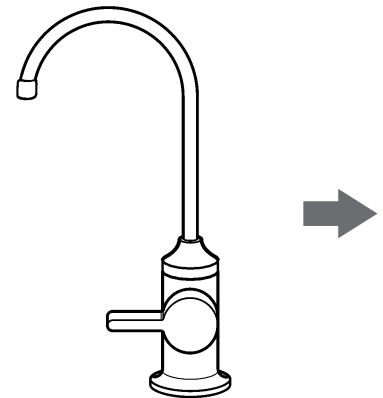
- “Filtered water” volume has significantly decreased.
- Unpleasant taste or odour.

## Cartridge Replacement Method

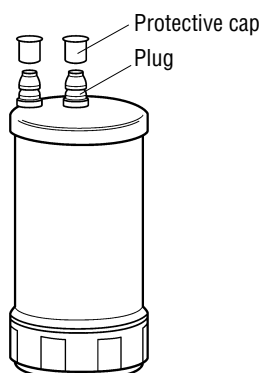
### ⚠ Attention

- Ensure that the lever is closed before replacing cartridge.  
(It may cause property damage by leakage.)
- Occasionally, the water may leak a little, so please place a towel or a washbasin under the cartridge.  
(It may cause property damage by leakage.)
- Make sure that one-touch joint is plugged in completely when replacing cartridge.  
(It may cause property damage by leakage.)  
(If it is connected incorrectly, it may produce blackened water (with activated carbon) or cause damage or leakage.)
- Make sure there is no irregularity such as leakage from the piping or hoses, when replacing the cartridge.  
(It may cause property damage by leakage.)
- After replacing the cartridge, please run the filtered water for at least 1 minute.

### 1. Close the faucet with the lever.

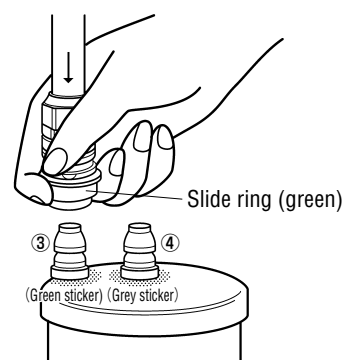


### 4. Remove the upper protective caps of the new cartridge (2 pieces).



### 5. Connect the green and grey stickers of the new cartridge with the slide rings of matching colour, then press them together.

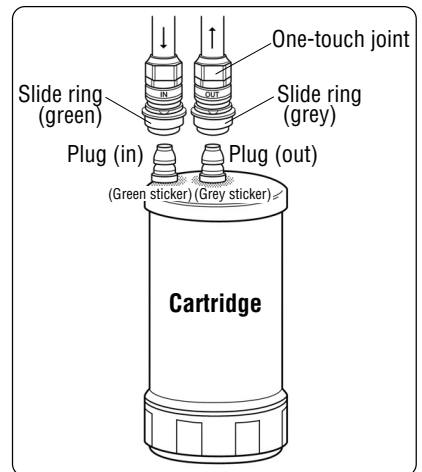
※The connecting order should be from green to grey. ③→④



〈The cartridge will rapidly become clogged up under the following conditions.〉

- |   |  |
|---|--|
| 1. Water supply facilities of the building are contaminated.                    | 4. A newly connected pipe has not been properly cleaned.   |
| 2. Pipes in old housing are deteriorating.                                      | 5. Water pressure is noticeably low (high story building.) |
| 3. Tap water becomes contaminated temporarily because of pipeline construction. |  |

●Enlarged view of cartridge

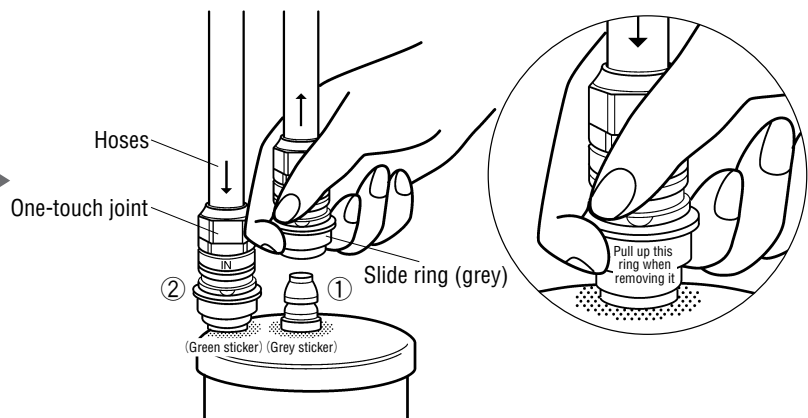


**2.** Pull the cartridge out towards yourself after removing it from the tray. Water may leak a little occasionally, so please place a towel or washbasin under the cartridge.



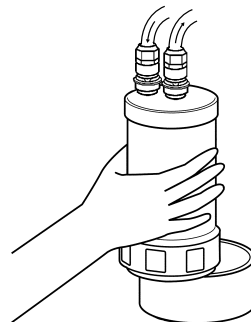
**3.** Pull up the slide ring (grey) with your finger, and then remove the one-touch joint from the cartridge. Remove the one-touch joint of the slide ring (green) with the same method.

※The removal order should be from grey to green. ①→②



**6.** Run water by opening the lever handle. Ensure there are no leaks in the connection.

**7.** Do not buckle or distort the hoses when placing into the cartridge tray.



To buy new cartridge, please contact the store where you bought Cleansui.  
Dispose of used cartridges in accordance with local waste regulations.

# 11. After-sale Service

## ■ Warranty

**Cleansui comes with a warranty. The validity of the warranty is one year from the date of purchase, subject to term & conditions listed on warranty. Please see the warranty for details.**

**【Parts replacement】** Abrasion and deterioration of parts may cause leakage, so some parts need to be replaced.

Examples of parts which can be worn or deteriorated: check valves, rubber washers, shower hose and lever etc.

By replacing parts when the parts are worn or deteriorated, the basic function of the product can be maintained.

## ■ The Minimum Holding Period of Replacement Parts

**The minimum holding period of replacement parts of this product is 10 years after production is discontinued. The replacement parts are necessary to maintain the product's basic function, and it may be necessary to replace them during the operational lifetime of the product.**

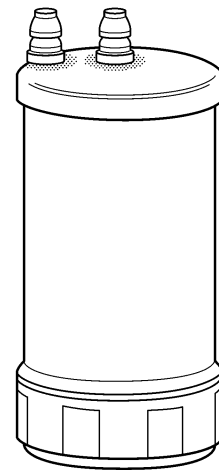
※Please note that it may be that only a substitute part is available, hence external appearance of the design or the design may differ from the original.

## ■ Before asking for a Service (Maintenance or Repair)

1. Refer to section “9. Troubleshooting” and verify the details of the situation.
2. Having verified the situation details, please contact the store from which you purchased your product or the contractor who installed your water purifier.
3. When you make an inquiry, please inform them of the following points.
  - ① Product Name (Under sink water filter “Cleansui”)
  - ② Set Number (A501ZCBE)
  - ③ Problems in detail

## ■ Replacement of Cartridge (Sold Separately)

1. Please contact the store or the contractor who installed the system when you need to replace the cartridge or other parts.
2. you need to buy the cartridge, please quote specific model number: UZC2000E
3. Do not place or store the cartridge in locations subject to high temperatures  
(locations subject to direct sunlight, inside cars that are parked in direct sunlight, etc.) It is recommended to use the cartridge as soon as possible after opening.



<Cartridge Model Number: UZC2000E>

# 12. Specifications

## ● Specifications

Set Number		<b>A501ZCBE</b>
Cartridge Model Number		<b>UZC2000E</b>
Material	Cartridge	<b>ABS resin</b>
	Faucet	<b>Copper</b>
	Connecting Hose	<b>Polyethylene</b>
Cartridge components		<b>Polyethylene hollow fibre membrane, ion exchange fibre, activated carbon, non woven fabric</b>
Initial water flow rate		<b>3 litres / min</b>
Minimum working water pressure		<b>0.07 MPa</b>
Filtration performance Based on JIS S 3201	Free residual chlorine	<b>40,000 litres (80% removed)</b>
	Turbidity	<b>20,000 litres (50% filtration flow rate)</b>
	Trihalomethanes	<b>8,000 litres (80% removed)</b>
	Chloroform	<b>8,000 litres (80% removed)</b>
	Bromodichloromethane	<b>10,000 litres (80% removed)</b>
	Dibromochloromethane	<b>10,000 litres (80% removed)</b>
	Bromoform	<b>10,000 litres (80% removed)</b>
	Soluble Lead	<b>10,000 litres (80% removed)</b>
	CAT(agricultural)	<b>20,000 litres (80% removed)</b>
	2-MIB (musty odour)	<b>20,000 litres (80% removed)</b>
	Tetrachloroethylene	<b>20,000 litres (80% removed)</b>
	Trichloroethylene	<b>20,000 litres (80% removed)</b>
	1,1,1-trichloroethane	<b>10,000 litres (80% removed)</b>
The estimated period of cartridge replacement (Based on JIS S 3201)		<b>1 year (20 litres/day) (When the filtration performances on trihalomethanes and chloroform decline to the levels mentioned above)</b>
Weight of the cartridge (When filled with water)		<b>800g (1400g)</b>
Dimensions of the cartridge		<b>105mm (Maximum diameter)×217mm (Height)</b>
Substances cannot be removed		<b>Salt (seawater) or metallic ions (except lead) contained in water</b>

## ● Faucet dimensions

Faucet dimensions	<b>Diameter 36~40mm</b>
Diameter of base	<b>Diameter 50mm</b>
Height of water outlet	<b>188mm</b>
Installation table thickness	<b>A501 3~25mm</b>

 **MITSUBISHI RAYON CLEANSUI CO., LTD.**