



**Item# PT70101**  
**Model: XFG4000U**



## GENERATOR OWNER'S MANUAL

- XFG2000/XFG3000U
- XFG2500/XFG3500U
- XFG3000/ XFG4000U
- XFG5000 (E) /XFG6500U

- ◆ Safety Instructions
- ◆ Installation
- ◆ Care And Maintenance
- ◆ Trouble Shooting

**CAUTION:** Read and follow all safety rules and operating instructions before first use of this product.

## FOREWORD

Read and understand this manual before operating the generator. Incorrect operation could result in personal injury equipment damage.

This manual should be considered a permanent part of the generator and remain with the generator when sold. This manual covers operation and maintenance of the generators.

All information in this publication is based on the latest product information available at the time of approval for printing. The fabricant reserves the right to make changes at any time without notice and without incurring any obligation.

Thanks for purchasing this generator.

## 1. SAFETY INSTRUCTIONS

Honda generators are designed to give safe and dependable service if operated according to instructions. Read and understand this owner's manual before operating your generator. You can help prevent accidents by being familiar with your generator's controls, and by observing safe operating procedures.

### Operator Responsibility

- Know how to stop the generator quickly in case of emergency.
- Understand the use of all generator controls, output receptacles, and connections.
- Be sure that anyone who operates the generator receives proper instruction. Do not let children operate the generator without parental supervision.

### Carbon Monoxide Hazards

- Exhaust contains poisonous carbon monoxide, a colorless and odorless gas. Breathing exhaust can cause loss of consciousness and may lead to death.
- If you run the generator in an area that is confined, or even partially enclosed, the air you breathe could contain a dangerous amount of exhaust gas. To keep exhaust gas from accumulating, provide adequate ventilation.

### Electric Shock Hazards

- The generator produces enough electric power to cause a serious shock or electrocution if misused.
- Using a generator or electrical appliance in wet conditions, such

as rain or snow, or near a pool or sprinkler system, or when your hands are wet, could result in electrocution. Keep the generator dry.

- If the generator is stored outdoors, unprotected from the weather, check all electrical components on the control panel, before each use. Moisture or ice can cause a malfunction or short circuit in electrical components which could result in electrocution.
- Do not connect to a building electrical system unless an isolation switch has been installed by a qualified electrician.

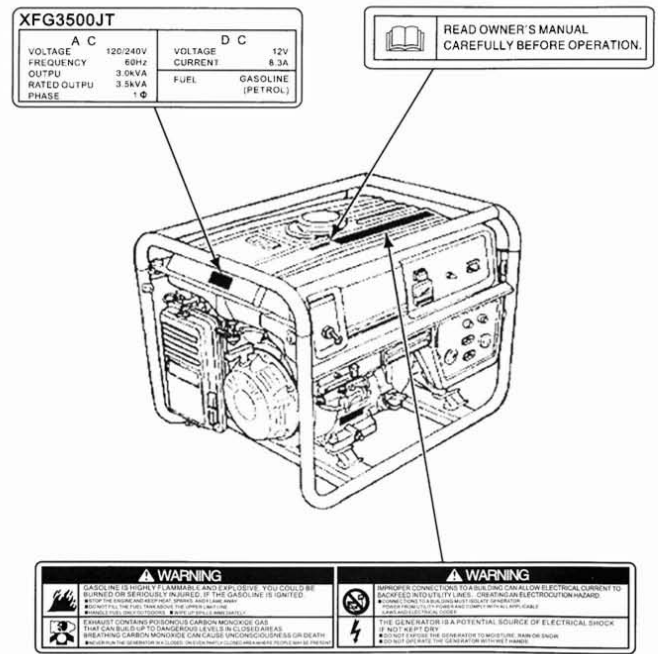
**Fire and Burn Hazards**

- The exhaust system gets hot enough to ignite some materials.
  - Keep the generator at least 3 feet(1 meter) away from buildings and other equipment during operation.
  - Do not enclose the generator in any structure.
  - Keep flammable materials away from the generator.
- The muffler becomes very hot during operation and remains hot for a while after stopping the engine. Be careful not to touch the muffler while it is hot. Let the engine cool before storing the generator indoors.
- Gasoline is extremely flammable and is explosive under certain conditions. Do not smoke or allow flames or sparks where the generator is refueled or where gasoline is stored. Refuel in a well-ventilated area with the engine stopped.
- Fuel vapors are extremely flammable and may ignite after the engine has started. Make sure that any spilled fuel has been wiped up before starting the generator.

**SAFETY LABEL LOCATIONS**

These labels warn you of potential hazards that can cause serious injury. Read them carefully.

If a label comes off or becomes hard to read, contact your Honda generator dealer for a replacement.



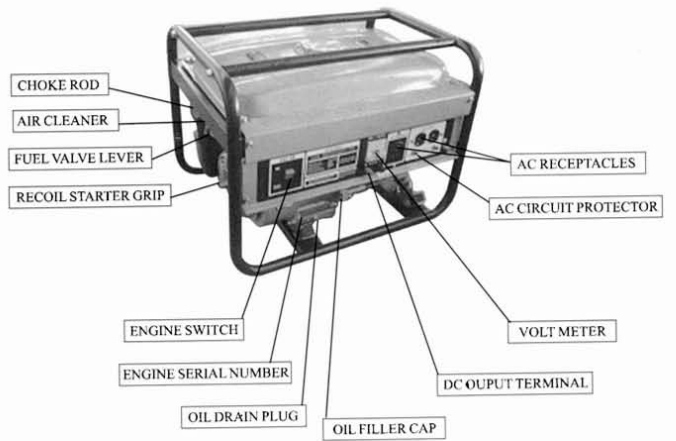
**⚠ WARNING**  
 THIS PRODUCT PRODUCES  
 CHEMICALS KNOWN TO THE  
 STATE OF CALIFORNIA TO  
 CAUSE CANCER AND BIRTH  
 DEFECTS (FOR OTHER  
 REPRODUCTIVE HARM).



**⚠ ! WARNING** ↓  
 DON'T TOUCH THE HOT EXHAUST VENT!  
 DON'T PLACE FLAMMABLE OBJECTS CLOSE!



## 2. COMPONENT IDENTIFICATION



### 3.CHECK BEFORE OPERATION

1. Check and ensure that the generator is on a level surface. Inspect the tightness of all fastener screws.

**CAUTION:**

If the generator is tilted, fuel spillage may result, and the engine oil afflic into carburetor could result damage\*.

\* Need the services of a career man.

2.Check the engine oil level.

- ◆ Remove the oil filler cap/dipstick and wipe it clean.
- ◆ Insert and remove the dipstick without screwing it into the filler hole. Check the oil level shown on the dipstick.
- ◆ If the level is low, fill to the upper limit mark on the dipstick with the recommended oil.
- ◆ Screw in the filler cap/dipstick securely.

**ATTENTION:**

The oil warning system will automatically stop the engine before the oil level falls below safe limit. Always check the oil level before startup to avoid an unexpected shutdown.

**ENGINE OIL RECOMMENDATIONS**

SAE10W-30 is recommended for general use;  
SAE5W-30 is recommended when the temperature fall to 0° C(30F).

### 3.Refueling.

With the generator stopped, remove the fuel tank cap and check the fuel level. Refuel the tank if the fuel level is low.

Use any regular automotive gasoline (unleaded gasoline is preferred) with a pump octane rating of 90 or higher.

**CAUTION:**

▲ Never use an oil/gasoline mixture or dirty gasoline.

Avoid getting dirt, dust or water in the fuel tank.

▲ Gasoline substitutes are not recommended, they maybe harmful to the fuel system components.

**WARNING:**

▲ Gasoline is extremely flammable, and gasoline vapor can explode. Refuel in a well-ventilated area, with the engine stop and cooling. Never smoke near gasoline, and keep other flames and sparks away. Always store gasoline in an approved container.

▲ Do not overfill the tank and make sure the filler cap is securely closed after refueling.

▲ Be careful not to spill fuel when refueling. If any fuel is spilled, make sure the area is dry before starting the generator.



#### 4. Check the accumulator. (Only for electric starter)

Use a 12-volt battery offered with an ampere-hour rating of at least 18Ah. Check the electrolyte level between the upper and low level mark.

##### **WARNING:**

A battery can explode if you do not follow the correct procedure, seriously injuring anyone nearby.

Keep all sparks, open flames, and smoking materials from the battery. Battery posts, terminals and related accessories contain lead and lead compounds. Wash hands after handling.

**Be careful not to connect the battery in reverse polarity, as this will short circuit the battery charging system. Always connect the positive (+) battery cable to the battery terminal before connecting the negative (-) battery cable. Connect according to:**

- ◆ First, connect the battery positive (+) cable to the starter solenoid terminal.
- ◆ Then, connect the battery negative (-) cable to the grounded solenoid (connected the end of the dynamo) terminal.
- ◆ When loosen off the battery, first loosen off the battery negative (-) cable, then the positive (+) cable.

#### 4. START THE ENGINE

1. Remove every load from AC Receptacles. The generator maybe hard to start if a load is connected.
2. Make sure that the AC circuit breaker is OFF.
3. Turn the fuel valve ON.
4. Pull the choke lever to CLOSE.

##### **ATTENTION:**

Do not close the choke when the engine is stopped just now.

5. Turn the engine switch ON.

##### 6. RECOIL START TYPE:

Pull the starter grip until compression is felt, then pull briskly to start.

##### **ATTENTION:**

Do not allow the starter grip to snap back. Return it slowly by hand.

##### ELECTRIC START TYPE:

Continue turn the engine switch (use the key) clockwise to start. When the engine started, return the switch ON immediately.

7. Push the choke lever to OPEN as the engine warms up.

#### 5. LOAD

##### **WARNING:**

To prevent electric shock from faulty appliance, the generator should be grounded. Connect a length of heavy wire between the ground terminal and the ground source.

Make the AC circuit breaker ON after the generator run several minutes ( Except XFG3000U/XFG3500U/ XFG4000U/XFG6500U ). Then plug in the appliance. First load greater power appliance When load more.

**ACCORDING TO:**

TYPE	VOLT		TYPICAL	EXAMPLE		
	START	RATED	EQUIPMENT	LOAD	START	RATED
Incandescent Lamp Heater	×1	×1	Incandescent Lamp TV set	100W	100W	100W
Fluorescent Lamp	×2	×1.5	Fluorescent Lamp	40W	80W	60W
Motor Driving	×3-5	×2	Fridge Fanner	150W	450-750W	300W

**CAUTION:**

▲ Be sure that appliances never exceed the rated load. Substantial over-loading will switch off the circuit breaker. Lesser overloading will not switch off the circuit breaker and will shorten the service life of the generator. If switch off, switch on the AC circuit breaker after reduce loading for a moment except XFG3000U/ XFG3500U/XFG4000U/XFG6500U.

▲ Do not exceed the current limit specified for any one receptacle.

▲ Connections for emergency power to household circuits must be made by a qualified electrician and must comply with all applicable laws and electrical codes. Improper installation may result in personal injury or damage to equipments.

**6.STOPPING THE GENERATOR**

To stop the generator in an emergency, turn the engine switch OFF.

**In normal use:**

1. Turn the AC circuit breakers OFF, except XFG3000U/ XFG3500U/ XFG4000U/XFG6500U.
2. Turn the fuel valve OFF.
3. Turn the engine switch OFF.

**7.CARE AND MAINTENANCE**

The purpose of the maintenance schedule and adjustment is to keep the generator in the best operating conditions. Please care your engine according the following maintenance schedule. If necessary, ask the dealer for help.

**MAINTENANCE SCHEDULE**

ITEM	Each use	First month or 20 Hrs.	Every 3 months or 50 Hrs.	Every 6 months or 100 Hrs.	Every year or 300 Hrs.
Engine oil	①	④	④		
Air filter	①		②		
Sediment cup				②	
Spark plug			①&③		④
Valve clearance				①&③	
Combustion chamber	②Every 500 Hrs.				
Fuel tank & filter				②	

- ①Inspection ②Cleaning ③Adjusting ④Change  
 →→These items should be serviced by your servicing dealer, unless you have the proper tools and are mechanically proficient.

### 1. Change engine oil

- ◆ Drain the oil while the engine is still warm to assure rapid and complete drain.
- ◆ Remove the filler cap and drain plug, and drain the oil. Retighten the plug securely. Refill with the recommended oil and check the level.

### 2. Air cleaner service

When the foam air filter element is dirty:

- ◆ Unsnap the clips, remove the air cleaner cover and remove the element.
- ◆ Clean the element in nonflammable or high flash point solvent and dry it thoroughly.
- ◆ Soak the element in clean engine oil and squeeze out excess oil.
- ◆ Reinstall the air cleaner element and the cover.

\* Service more frequently when used in dusty areas.

### 3. Fuel filter service

- ◆ Turn the fuel valve OFF.  
Remove the filter cup.
- ◆ Clean the cup thoroughly.
- ◆ Reassemble. Do not damage the rubber gasket.



### 4. Spark plug service

- ◆ Remove the spark plug cap.
- ◆ Use the wrench supplied in the tool kit to remove the spark plug.
- ◆ Visually inspect the spark plug. Clean the plug gap. Discard it if the insulator is cracked or chipped.

- ◆ Measure the plug gap with a feeler gauge. The gap should be 0.7-0.8mm(0.028-0.032 in). Correct as necessary by bending the side electrode.



- ◆ Attach the plug washer. Thread the plug in by hand to prevent cross-threading.
- ◆ Tighten a new spark plug 1/2 turn with the wrench to compress the washer. If you are reusing a plug, it should only take 1/8-1/4 turn after the plug seats.

### 8. LONG-TERM STORAGE/TRANSPORTING

When transporting the generator, turn the engine switch OFF and keep the generator level to prevent fuel spillage, Fuel vapor or spilled fuel may ignite.

If the generator is not used for extended period, please store it:

- 1.Changes in the fuel quality could cause poor engine starting, etc., so to prevent this remove and empty the filter cup to drain the fuel from the fuel tank into a suitable container. Replace the filter cup and tighten securely. Then loosen the fuel drain screw to drain out the fuel from the carburetor.
- 2.When storing the engine, remove the spark plug, pour 5 to 10cc of engine oil into the cylinder, Retighten the spark plug (according to Spark plug service). Then pull the starter rope several times. At the last time, when resistance is felt return the starter rope gently, and this will help protect the engine from corrosion.
- 3.Wipe the outside of the engine with a cloth soaked in oil



(Do not with water).

4.Store in a location with low humidity and keep out dust.

## 9.TROUBLE SHOOTING

### 1.Starting failure

◆Is ignition normal?→

✓Is there enough fuel and the fuel valve ON? Is gasoline reaching the carburetor? Is engine switch turned to ON position?

✓Remove spark plug . When it is soiled, clean or replace.

✓When the oil level falls below safe limit, the engine will automatically stop.

◆Is compression sufficient? →

Confirm by pulling the starter grip slowly. When compression is insufficient, check whether tightening of spark plug is firm. If it is loose, retighten.

◆Is fuel sucked into the combustion chamber? →

✓Is fuel chock ON?

✓Close choke lever, pull starter grip several times then remove the spark plug. When tip of spark plug is wet, it is OK.

✓When fuel is not sucked, check fuel strainer for clogging.

✓When engine does not start though fuel is sucked, replace with new fuel.

### 2.Stop immediately after starting

Is there enough oil in the crankcase? If not, the oil alert system could stop the engine.

3.No electricity at the AC receptacles.

Is the AC circuit breaker ON?

Check the electrical appliance or equipment for any defects.

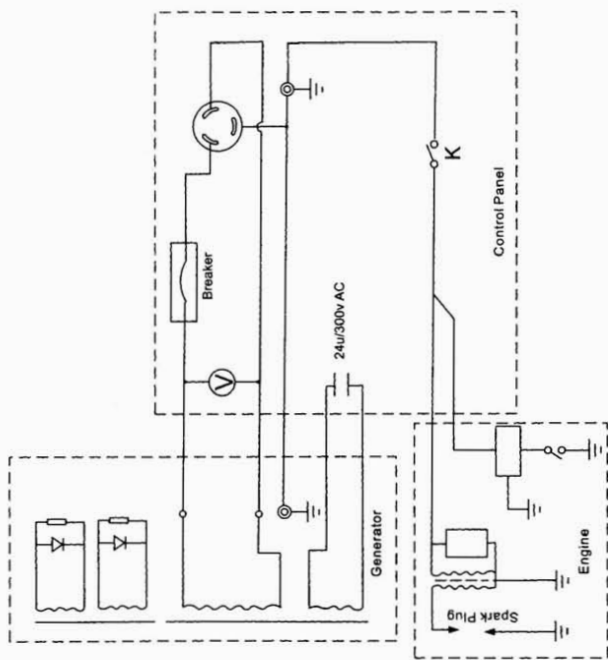
4.If you have other difficulties, have your engine inspected and repaired by your dealer.

## 10.TECHNOLOGY PARAMETER

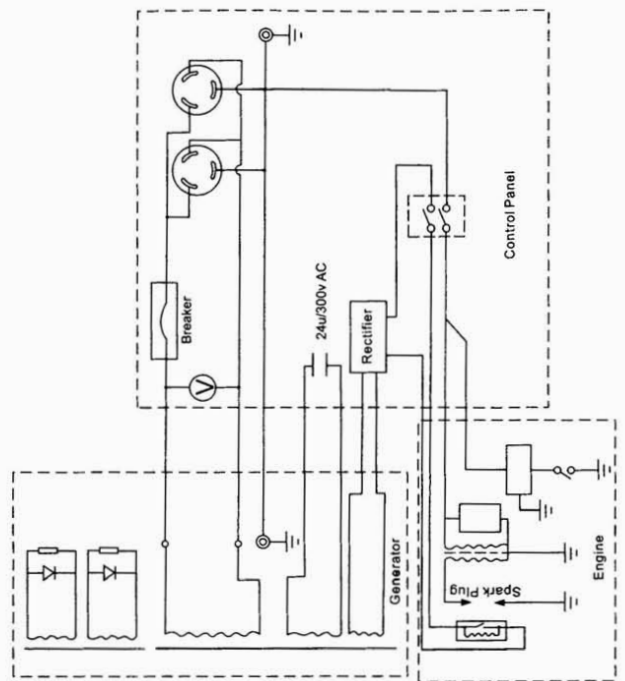
Term	Model			
	XFG2000 XFG3000U	XFG2500 XFG3500U	XFG3000 XFG4000U	XFG5000 (E) XFG6500U
GENERATOR:				
Type	Single-phase, brush/no brush In-phase generator			
Rated Voltage (V)	220/120 (240)			
Rated Output (kVA/Hz)	2.0/50	2.5/50	3.0/50	5.0/50
	2.3/60	3.0/60	3.5/60	6.0/60
Max. Output (kVA/Hz)	2.3/50	2.8/50	3.2/50	5.2/50
	2.7/60	3.5/60	4.0/60	6.5/60
ENGINE:				
Model	168F	168F-II	173F	188F(E)
Type	4-stroke, OHV, Single-cylinder, C.D.I, Forced air-cooling			
Displacement (mm <sup>3</sup> )	163	196	242	389
Bore × Stroke (mm)	68×45	68×54	73×58	88×64
Compression Ratio	8.5 : 1	8.5 : 1	8.5 : 1	8.5 : 1
Start Type	Recoil start	Recoil start	Recoil start	Recoil start (Electric start)
Oil Capacity (L)	0.6	0.6	1.1	1.1
Fuel Tank Capacity (L)	15	3.6/15	25	25
DIMENSIONS:				
L×W×H (mm)	590×442×435mm		680×510×542mm	
Dry Weight (kg)	45	45	72	84(94)

# 11. WIRING DIAGRAM

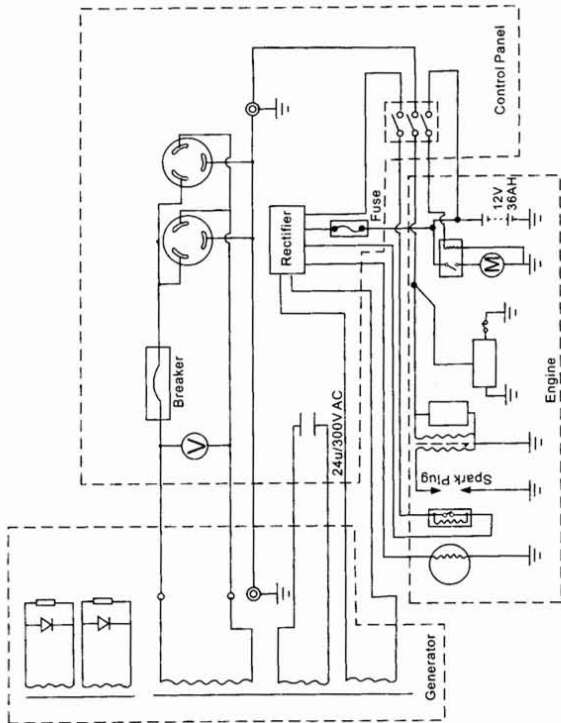
XFG2000/XFG3000U/XFG2500/XFG3500U



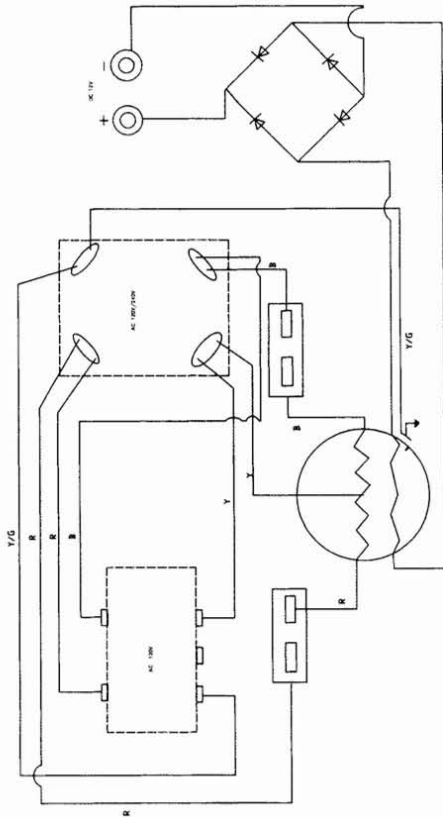
# XFG3000/XFG4000U



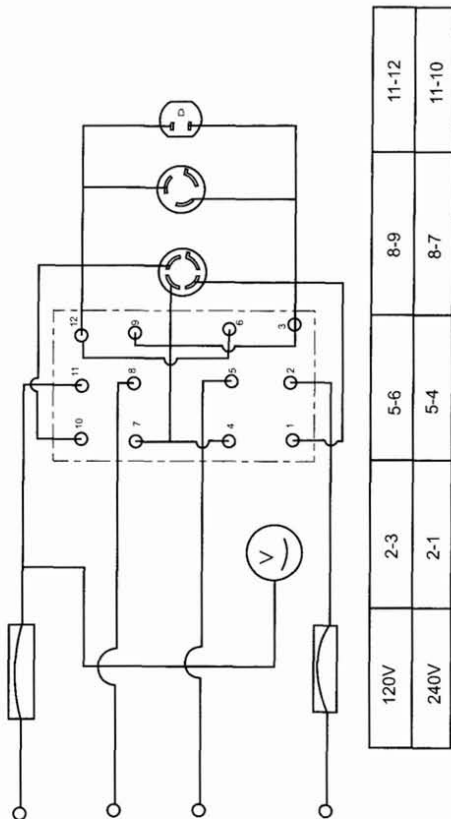
XFG5000(E)/XFG6500U



120V/240V CONNECT THE LINE OF FRONT-PANEL ( I )



120 V/240V CONNECT THE LINE OF FRONT-PANEL ( II )



## 12. WARRANTY SERVICE

### OWNER SATISFACTION

Your satisfaction and goodwill are important to the dealer and us.

### LENGTH OF WARRANTY:

The product must be purchased in the state where the product be used. From the date of original retail purchase, the length of warranty is limited to 12 months when the generator used in normal application, and 6 months in commercial or rental application.

### HOW REPAIR OR REPLACE UNDER WARRANTY:

The dealer will repair or replace without charge of parts, at its option, any part that is to be defective in material or workmanship under normal use during the applicable warranty time period. Anything replaced under warranty becomes the property of the fabricant. All parts replaced under warranty will be considered as part of the original product and any warranty on those parts will expire coincident with the original product warranty.

### TO OBTAIN WARRANTY SERVICE:

You must take the generator, accessory, or the product on which the accessory or replacement part is installed, and proof of purchase, to the dealer who is authorized to sell that product, during the dealer's normal business hours. If you are unable to obtain warranty service, or are dissatisfied with the warranty service you receive, take the following steps: First, contact the owner of the dealership involved; normally this will resolve the problem. However,

if you should require further assistance, write or call our Customer Relations Department. Get the address and telephone from the dealer.

**EXCLUSIONS:**

This warranty does not extend to parts affected or damaged by accident and/or collision, normal wear, fuel contamination, use in an application for which the product was not designed or any other misuse, incorporation or use of unsuitable attachments or parts, unauthorized alteration, or any causes other than defects in material or workmanship of the product.

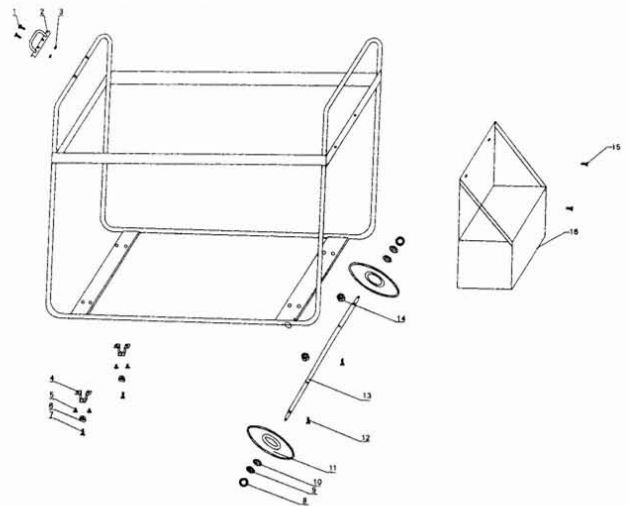
This warranty gives you specific legal rights, and you may also have other rights which vary from state to state.

**ADDENDA**

**INCASEMENT LIST**

Appellation	Amount	Remark
Generator	1	
Connector Plugs	1-5	Amount of electrical outlet
Tools Kit	1	
Owner's Manual	1	
Handle & bolts	1	XFG6500U
Absorber & bolts	2 (4)	XFG3000U/XFG3500U (XFG6500U)
Shaft & bolts	1	XFG6500U
Wheels	2	XFG6500U
Frame & bolts	2	XFG6500U
battery&box	1	XFG6500U electric start

**13. ASSEMBLE APPURTENANCES**



NO.	NAME	QUANTITY	REMARK	NO.	NAME	QUANTITY	REMARK
1	BOLTM6*35	2		9	SPRING WASHER10	2	
2	PULL HANDLE	1		10	WASHER10	2	
3	NUT M6	2		11	WHEELS	2	
4	BRACKET	2		12	BOLTM8*30	2	
5	BOLTM8*15	4		13	SHAFT	1	
6	SHAKE ABSORBER	2		14	NUT M8	2	
7	BOLTM8*25	2		15	BOLTM6*30	2	
8	NUT M10	2		16	ELECTRIC CELL BOX	1	



# CALIFORNIA EMISSION CONTROL WARRANTY STATEMENT

## YOUR WARRANTY RIGHTS AND OBLIGATIONS

The California Air Resources Board and JIANGSU JIANGDONG GROUP CO. LTD. (JDG) are pleased to explain the emission control system warranty on your 2006 model year small off-road engine. In California, new small off-road engines must be designed, built and equipped to meet the State's stringent anti smog standards. JDG must warrant the emission control system on your small off-road engine for the periods of time listed below provided there has been no abuse, neglect or improper maintenance of your small off-road engine.

Your emission control system may include parts such as the carburetor or fuel injection system, the ignition system, catalytic converter, fuel hose and clamps. Also included may be hoses, belts, connectors and other emission related assemblies.

Where a warrantable condition exists, JDG will repair your small off-road engine at no cost to you including diagnosis, parts and labor.

## MANUFACTURER'S WARRANTY COVERAGE:

The 1995 and later small off-road engines are warranted for two years. If any part on your equipment is defective, the part will be repaired or replaced by JDG.

## OWNER'S WARRANTY RESPONSIBILITIES:

As the small off-road engine owner, you are responsible for the performance of the required maintenance listed in your owner's manual. JDG recommends that you retain all receipts covering maintenance on your small off-road engine, but JDG cannot deny warranty solely for the lack of receipts or for your failure to ensure the performance of all scheduled maintenance.

As the small off-road engine owner, you should however be aware that JDG may deny you warranty coverage if your small off-road engine or a part has failed due to abuse, neglect, improper maintenance or unapproved modifications.

You are responsible for presenting your small off-road engine to a JDG distribution center as soon as a problem exists. The warranty repairs should be completed in a reasonable amount of time, not to exceed 30 days.

If you have any questions regarding your warranty rights and responsibilities, you should contact AMERICAN JD GROUP CO., Ltd., at 1-630 953-0806. or writes to the following address: AMERICAN JD GROUP CO., Ltd., 240 Cortland Ave. Lombard, IL 60148, ATTENTION WARRANTY DEPARTMENT.

## II. EMISSION CONTROL SYSTEM WARRANTY

Emission Control System Warranty (ECS Warranty) for 1997 and later model engines:

(a) Applicability: This warranty shall apply to 1997 and later model year engines. The ECS Warranty Period shall begin on the date the new engine or equipment is delivered to its owner and shall continue for a period of two years.

(b) General Emissions Warranty Coverage: JDG warrants to the owner of the new engine or equipments and each subsequent purchaser for a period of two years.

(1) Designed, built and equipped so as to conform with all applicable regulations adopted by the EPA and CARB pursuant to their respective authority, and

(2) Free from defects in materials and workmanship that causes a warranted part to fail to be identical in all material respects to the part as described in the engine manufacturer's application for certification for a period of two years.

The ECS Warranty only pertains to parts on your engine, as follows:

(1) Any warranted part that is not scheduled for replacement as required maintenance in the Owner's Manual must be warranted for the ECS Warranty Period. If any such part fails during the ECS Warranty Period, it shall be repaired or replaced by JDG according to Subsection (4) below. Any such part repaired or replaced under the ECS Warranty must be warranted for the remaining warranty period.

(2) Any warranted part that is scheduled only for regular inspection as specified in the Owner's Manual must be warranted for the ECS Warranty Period. A statement in such written instructions to the effect of "repair or replace as necessary" will not reduce the period of warranty coverage. Any such part repaired or replaced under warranty must be warranted for the remaining warranty period.

(3) Any warranted part that is scheduled for replacement as required maintenance in the Owner's Manual must be warranted for the period of time prior to the first scheduled replacement point for that part. If the part fails prior to the first scheduled replacement, the part shall be repaired or replaced by JDG according to Subsection (4) below. Any such part repaired or replaced under the ECS Warranty shall be warranted for the remainder of the ECS Warranty Period prior to the first scheduled replacement point for the part.

(4) Repair or replacement of any warranted, part under this ECS Warranty shall be performed at no charge to the owner at a JDG Authorized Warranty Service Facility.

(5) Notwithstanding the provisions of Subsection (4) above, warranty services or repairs must be provided at all JDG distribution centers that are franchised to service the subject engines.

(6) The owner must not be charged for diagnostic labor that leads to the determination that a warranted part is in fact defective, provided that such diagnostic work is performed at a JDG's warranty station.

(7) JDG is liable for damages to other engine components proximately caused by a failure under warranty of any warranted part.

(8) Throughout the engine's warranty period, JDG must maintain a supply of warranted parts sufficient to meet the expected demand for such parts.

(9) Any replacement part may be used in the performance of any Warranty maintenance or repairs and will be provided without charge to the owner. Such use shall not reduce JDG's ECS Warranty obligations.

(10) Add-on or modified parts that are not exempted by the Air Resources Board may not be used. The use of any non-exempted add-on or modified parts will be grounds for disallowing a warranty claim made in accordance with this article. JDG will not be liable under this article to warrant failures of warranted parts caused by the use of a non-exempted add-on or modified part.

#### EMISSION RELATED PARTS INCLUDE THE FOLLOWING:

1) Fuel Metering System:

- a) Gasoline carburetor assembly and its internal components.
- b) Fuel filter (if so equipped)
- c) Carburetor gaskets
- d) Fuel pump (if so equipped)

2) Air Induction System including:

- a) Intake pipe/manifold
- b) Air cleaner

3) Ignition System including:

- a) Spark plug
- b) Ignition module/coil

4) Miscellaneous Items Used in Above Systems

- a) Vacuum, temperature, and time sensitive valves and switches.
- b) Hoses, belts, connectors, and assemblies.

5) Evaporate control

- a) Fuel Hose certificated for ARB evaporative emission of 2006.
- b) Fuel Hose clamp