

MAGNAVOX SERVICE MANUAL

Manual No. 6510

File: Volume 14
Miscellaneous Section
First Issue: November, 1979

SERVICE DEPARTMENT/MAGNAVOX CONSUMER ELECTRONICS COMPANY
FORT WAYNE, INDIANA 46804

ODYSSEY² (BJ/BK7600) VIDEO GAME SYSTEM



Model BJ/BK7600

GENERAL INFORMATION

The Odyssey² (Model BJ/BK7600) is a programmable video game system using integrated circuits. The basic Odyssey² system consists of two plug-in Player Hand Controls, a

alpha-numeric Keyboard, Antenna/Game Switch Box, external AC Adapter, and a Game Cartridge.

INSTALLATION INSTRUCTIONS

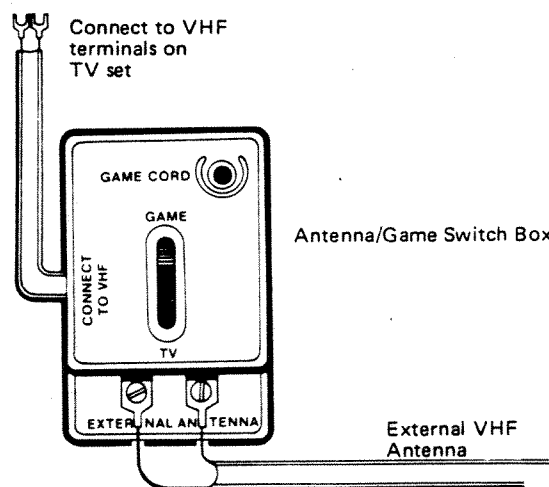


Figure 1

Your Odyssey² will interconnect with any color or black and white television set. All you need is a flat-head screw-driver.)

1. The Antenna/Game Switch Box (see Figure 1) is provided as a convenience to allow selection of either Odyssey² or regular television viewing, without having to disturb antenna connections.

Locate the VHF antenna terminals on the back of the television set. Disconnect the VHF antenna leads

and reconnect these leads to the terminals on the Antenna/Game Switch box.

Connect the flat twin-lead wire from the Antenna/Game Switch box to the VHF terminals on the back of your television set.

If your VHF antenna cable is round with a screw-type connector (75 ohm), you will need to purchase a 75 ohm to 300 ohm Balun to permit connection of your TV antenna to the Odyssey² Antenna/Game Switch box.

If you are using a 75 ohm round cable, your TV will probably have a set of jumper plates or a switch which must be moved to select the VHF 300 ohm terminals. (See your TV's Owner's Manual for information).

If you have only a UHF antenna, do not disconnect it from your television set. Just connect the flat twin-lead wire from the Antenna/Game switch box to the VHF terminals on the back of your television set.

Use the plastic mounting hook supplied to hang the Antenna/Game Switch box from the back of your television set. First insert the hook in the back of the switch box, then insert the end through one of the ventilating holes on the back of your TV.

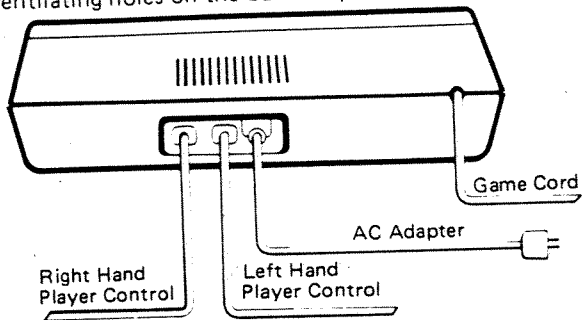


Figure 2

2. Plug the Left and Right Player Hand Control Cables into the rear of the console (see Figure 2).
3. Plug the GAME CORD from the console into the socket on the top of the Antenna/Game Switch box marked "GAME CORD".

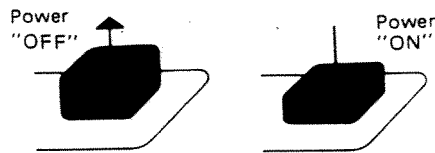


Figure 3

4. Check to make sure that the POWER button on the console is on the OFF position (see Figure 3).

Plug the AC ADAPTOR into any standard 120 volt electrical outlet.

5. Place the switch on the Antenna/Game switch box to the GAME position.

Set the channel of your TV set to the unused channel (3 or 4) in your area.

Your Odyssey² is normally set at the factory for operation on channel 3 of your television set. If a TV station is transmitting on channel 3 in your area, you can switch your Odyssey² to channel 4 for operation.

This can be accomplished by turning the console over with the cartridge slot facing away from you. Remove the three screws from the bottom of the Console.

Carefully remove the bottom panel of the Console. You will find the channel selector switch in a metal box located to the upper right of the printed circuit at the upper right hand corner of the console. Slide the switch from the channel 3 position to the channel 4 position. Then replace and secure the bottom panel of the Console.

CHECKOUT PROCEDURE

1. Visually inspect the Console Unit, Player Hand Control Units, and the AC Adaptor for breakage, cracks, broken or bent connector pins, broken wires, foreign material, corrosion or other damage.

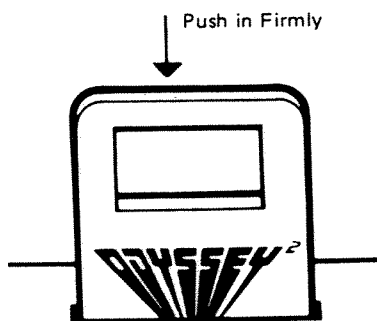


Figure 4

2. Make sure that the Power button on the console is in the OFF position. This will protect the electronic components of both the console and the cartridge.

Hold the Odyssey² Cartridge so that the label side is facing you and reads right side up. (See Figure 4).

Insert the Cartridge carefully in the cartridge slot on the top of the console. (Note: When you remove the

Cartridge, always make sure that the Power button on the Console is in the OFF position.)

3. Press the Power button on the console to the ON position.

"SELECT GAME" will appear on your TV screen. If it should not appear, press the Reset Key on the Console Keyboard. If "SELECT GAME" still does not appear on the screen, check to make sure the AC Adaptor jack is completely plugged into the console and that the cartridge being used is properly inserted.

The sounds of the game will be coming from the speaker on your TV. Adjust your volume control on the TV to a comfortable level.

If necessary, adjust the fine tuning control on your TV to get the best possible picture.

See the Official Game Rules booklet that accompanies each cartridge for specific game instructions.

(NOTE: When you want to return to regular TV programming, push the Power Button of the console to the OFF position and place the switch on the Antenna/Game switch box to the TV position.

SERVICE ADJUSTMENTS

CAUTION: UNDER NO CIRCUMSTANCES ATTEMPT TO MAKE ADJUSTMENTS OF THE RF OSCILLATOR LOCATED INSIDE THE METAL SHIELD. THESE ARE PRESET AT THE FACTORY IN TEST FIXTURES TO MAGNAVOX STANDARDS, AND STRICT FCC REQUIREMENTS.

BEFORE ATTEMPTING TO MAKE ANY SERVICE ADJUSTMENTS, CHECK ENTIRE BOARD FOR SHORTS OR CRACKS. TOTAL CURRENT DRAIN SHOULD BE MONITORED AT ALL TIMES.

THE 3.58 MHz CLOCK, MICROPROCESSOR CLOCK AND THE VIDEO LEVEL ADJUSTMENTS MAY BE MADE ONLY AFTER IT HAS BEEN DETERMINED THAT IT IS ABSOLUTELY ESSENTIAL.

3.58 MHz Clock Adjustment

Connect a high impedance counter to Pin 1 of IC5 and adjust trimmer C6 for 3,579,545 \pm 50 Hz.

Microprocessor Clock Adjustment

Connect a scope to Pin 2 of IC7 and adjust L2 for maximum amplitude and symmetry.

(NOTE: This adjustment must be made after the 3.58 MHz Clock Adjustment is made).

Video Level Adjustment

Adjust the Video Level control, R4, until a good contrast in the picture is obtained.

IMPORTANT SAFEGUARDS

- DO NOT remove or insert cartridges unless the console is turned OFF.
 - Guide the cartridges into the cartridge slot of the console. DO NOT use force.
 - Clean exterior parts of the console and cartridges with a soft, slightly damp cloth. DO NOT immerse them into water or spill liquids on them.
 - Keep the console, cartridges and Player Hand Controls away from extreme heat.
 - Avoid puncturing the keyboard. DO NOT use pencils, penpoints or other sharp objects to press keys.
 - Always place the Power button of the console in the OFF position when not in use.
 - Only connect the console to a standard AC electrical outlet.
 - Always turn OFF your Odyssey² each time you have finished playing the games. Then unplug the AC Adaptor from the 120 volt outlet.
- (Note: If you leave the same game pattern on your TV screen for more than 6-8 hours continuously, there is a possibility that the game pattern could be permanently imprinted on the picture tube screen.)

ODYSSEY² TROUBLESHOOTING

No Game Image on TV

- a. Check the Antenna/Game switch to see if the switch is set in the Game position.
- b. Check to see that the Game Cord is plugged into the Antenna/Game switch box.
- c. Check the connections of the Antenna/Game switch box to the VHF terminals in back of the TV.
- d. The Cartridge may have been inserted when the console was turned On. Place the Power button in the OFF position.
- e. Interference may be caused by a particularly strong broadcast or cable TV station in your area. Disconnect the antenna or cable wire from the Antenna/Game Switch box.

No TV Program Reception

- a. Check the Antenna/Game switch to see if the switch is set in the TV position.
- b. Check the antenna connections to the Antenna/Game Switch box.

Game Image Weak or Blurry

- a. Check for poor connections at the antenna terminals of the TV set and the Antenna/Game switch box.
- b. Be sure the fine tuning control of the TV is properly adjusted.
- c. Interference may be caused by a particularly strong broadcast of cable station in your vicinity. Disconnect the antenna or cable wire from the Antenna/Game switch box.

No Game Sounds

- a. Check the volume setting of your TV.

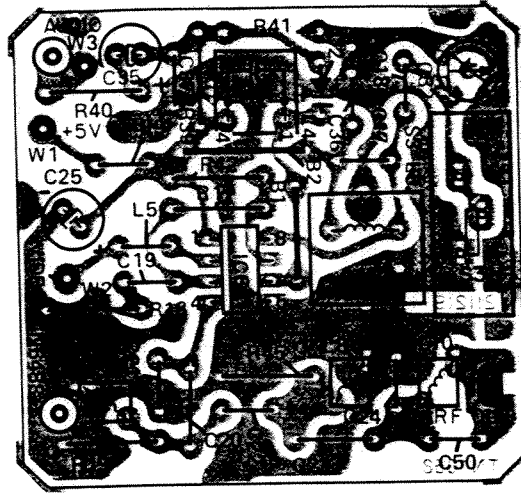
Right or Left Side of Game Area Does Not Appear on Screen

- a. Adjust the Horizontal Hold control on your TV.

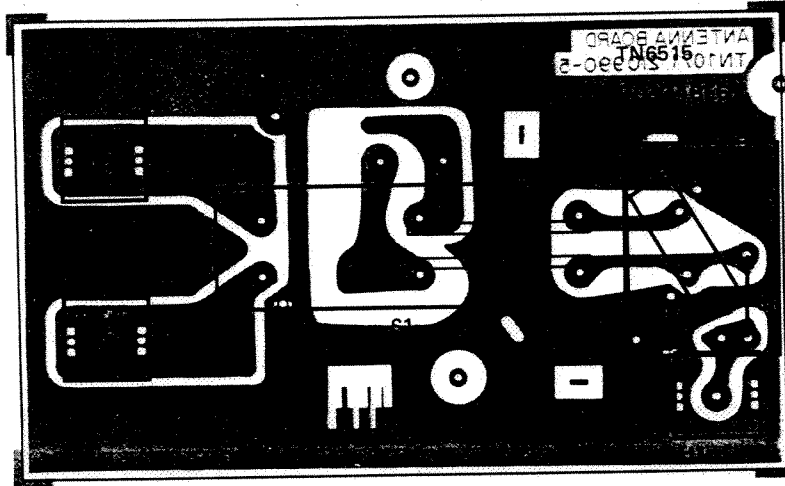
Player Hand Control Does Not Work

- a. Check to see if the Player Hand Control is properly plugged into the rear of the console.
- b. Defective Player Hand Control.

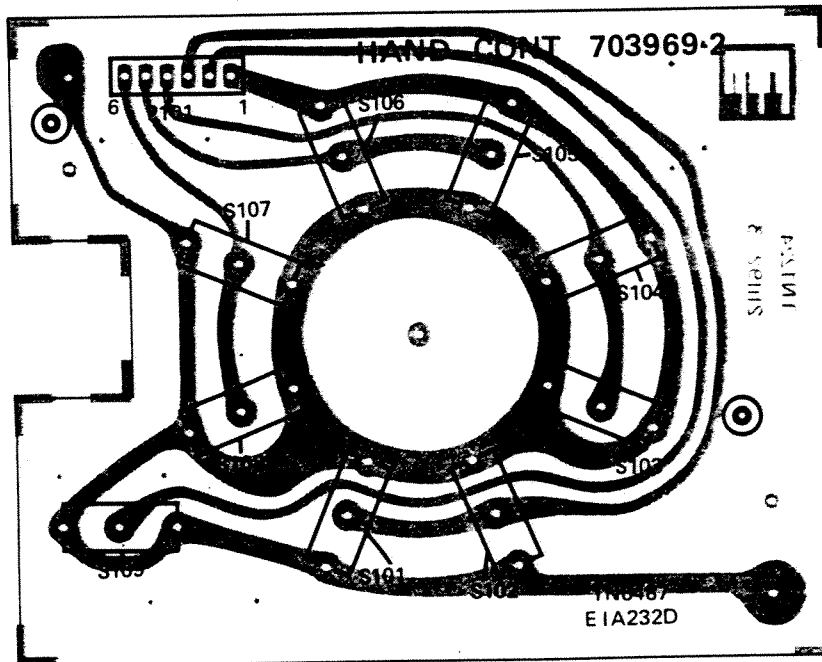
RF MODULATOR P.C. BOARD

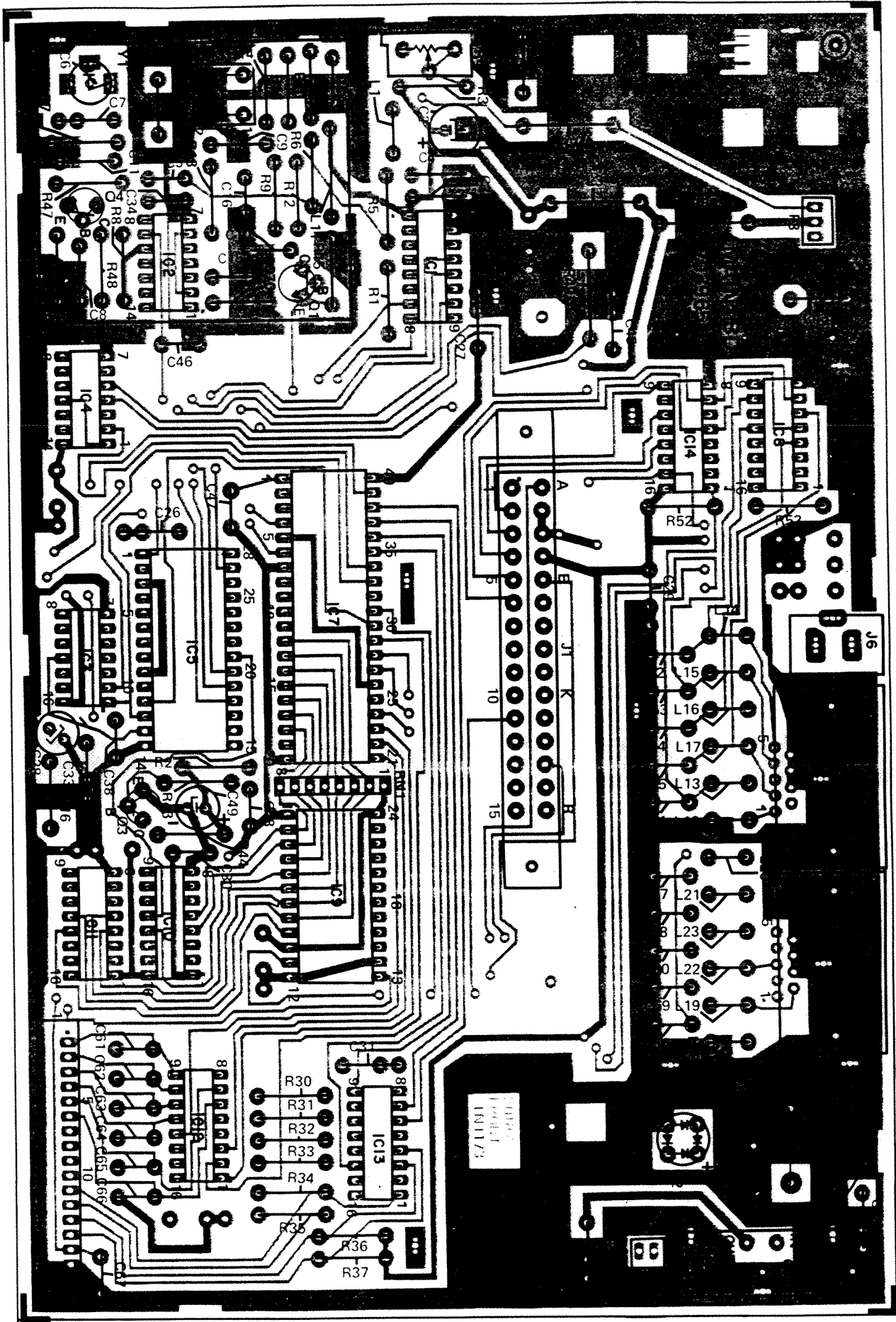


ANTENNA/GAME SWITCH BOX P.C. BOARD

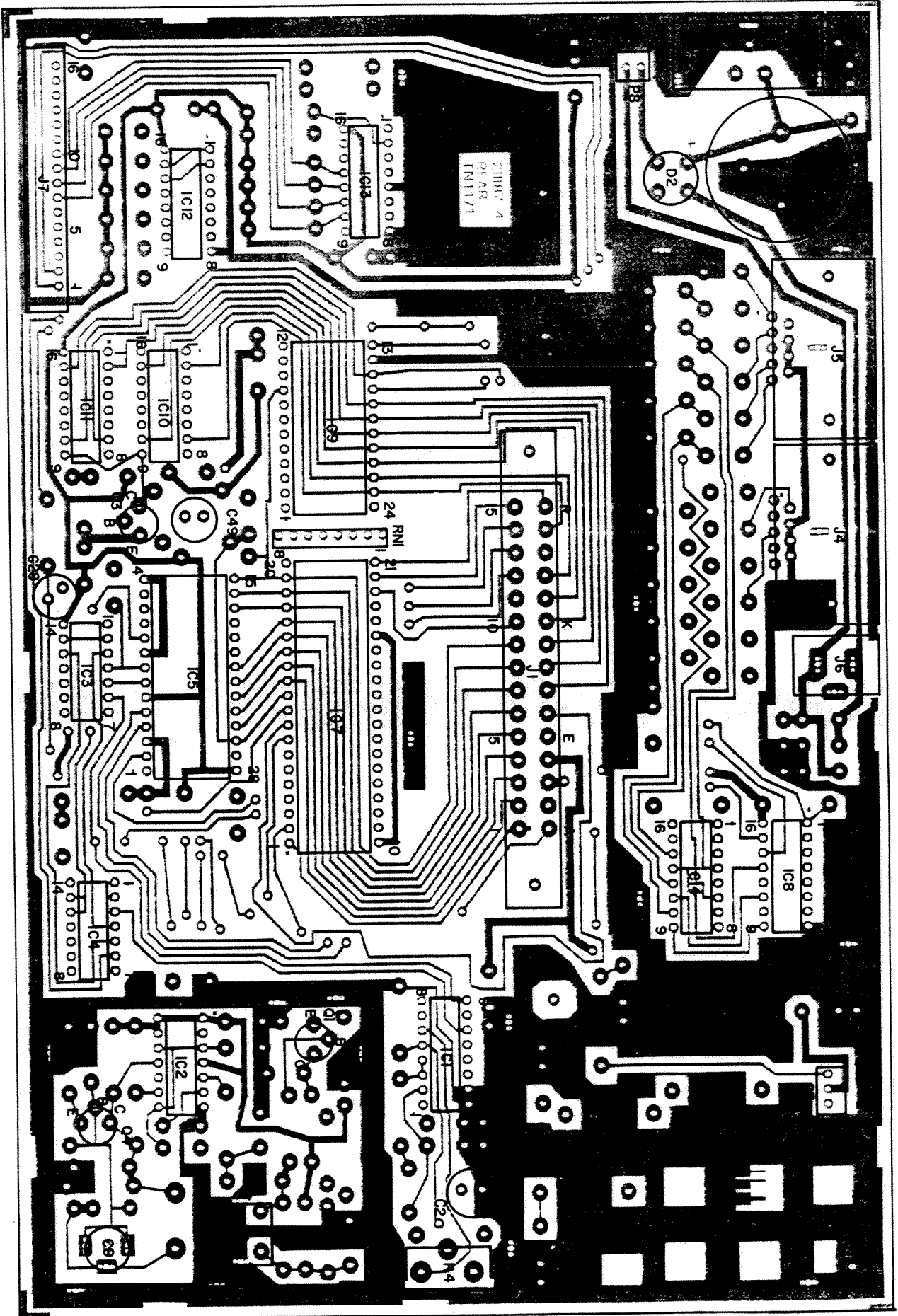


HAND CONTROL P.C. BOARD



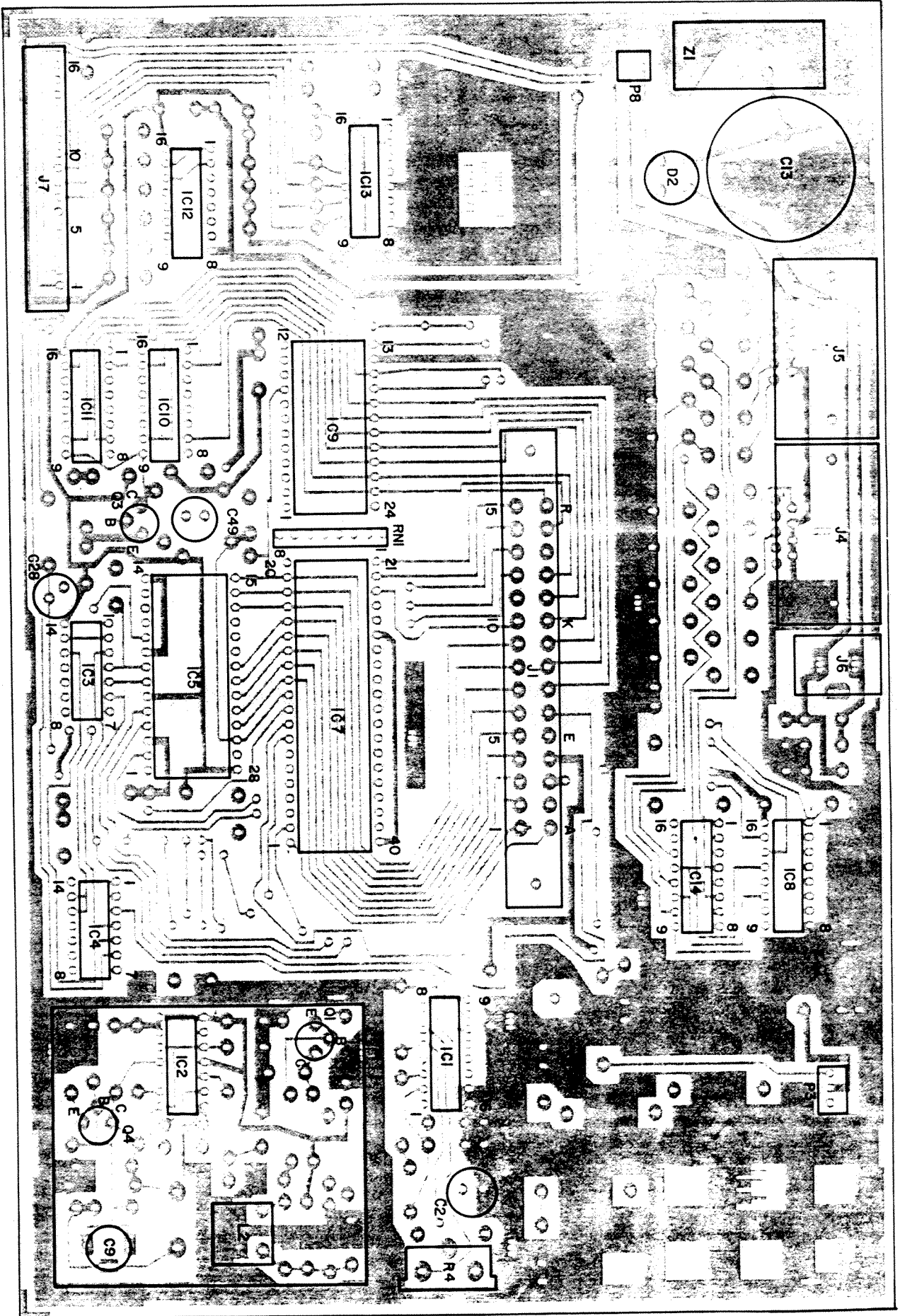


MAIN P.C. BOARD
(TOP VIEW)



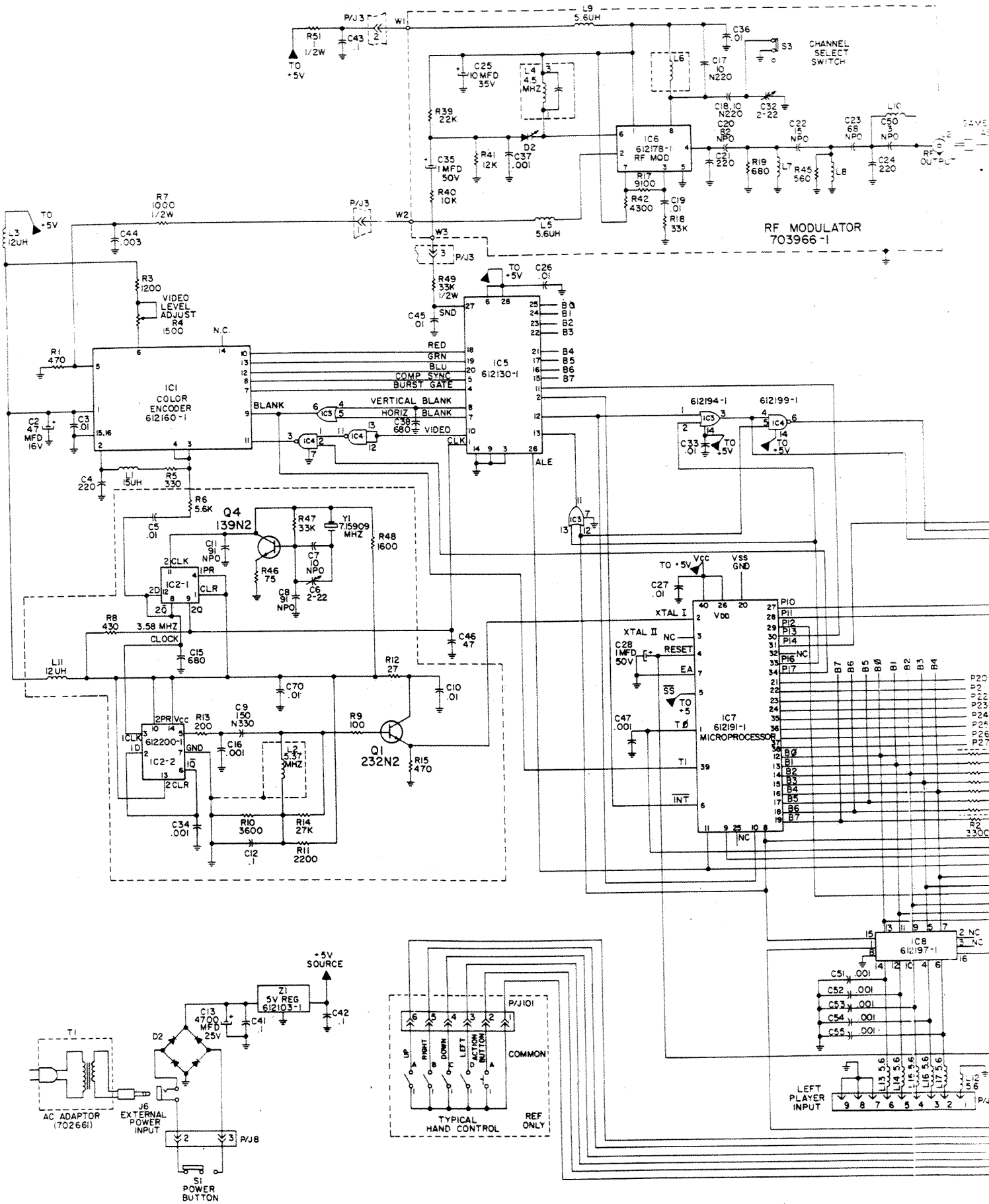
MAIN P.C. BOARD
(BOTTOM VIEW)

MAIN P.C. BOARD

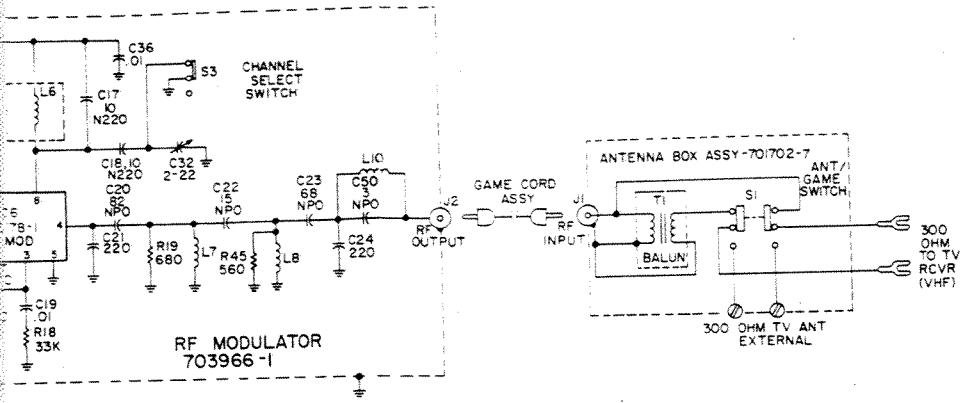


MAIN P.C. BOARD
(BOTTOM VIEW)

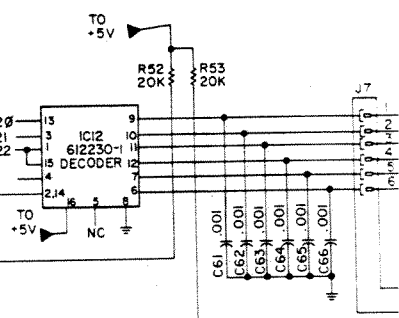
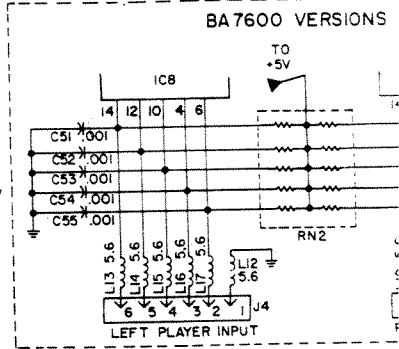
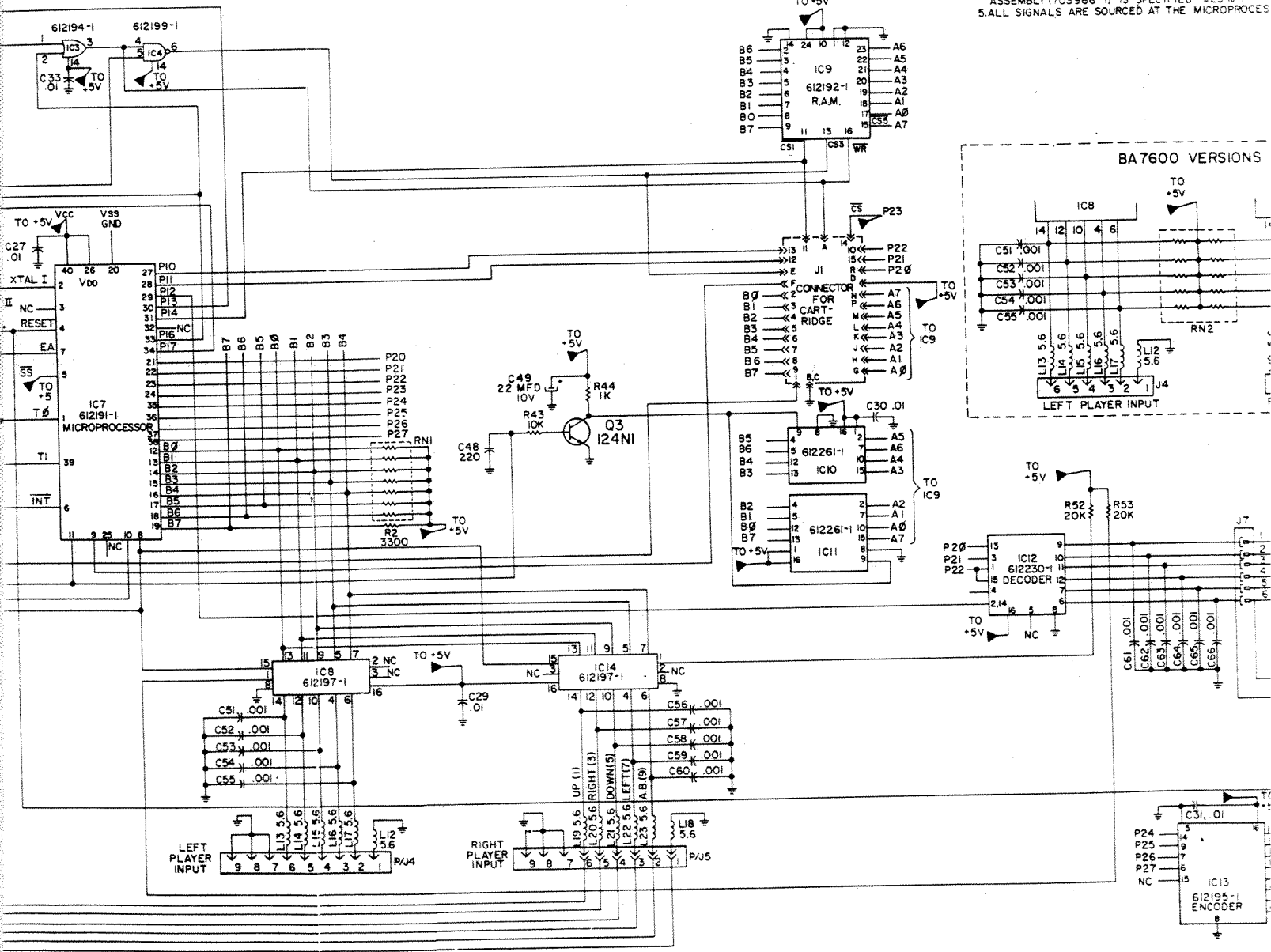
MAIN P.C. BOARD



ODYSSEY² SCHEMATIC DIAGRAM



- NOTES:
- UNLESS OTHERWISE SPECIFIED
 - RESISTORS ARE 5%, 1/4 WATT IN MODULATOR.
 - CAPACITANCE VALUES OF 1 OR GREATER ARE IN PICO.
 - CAPACITANCE VALUES LESS THAN 1 ARE IN MICROF.
 - THE VALUE OF THE COMPONENTS NOT IN RF MOD ASSEMBLY (703966-1) IS SPECIFIED ±25%.
 - ALL SIGNALS ARE SOURCED AT THE MICROPROCES



IMPORTANT

It is against Federal Communications Commission regulations to cause any interference to nearby television sets.

- Please do not use any longer twin-lead wire from the Antenna/Game Switch Box to your TV set than is supplied.
- Please do not make a direct connection from the Antenna/Game Switch Box to any TV antenna or cable TV outlet.
- Do not attach loose wires to your TV antenna terminals when your Odyssey² is turned ON.

703966 "RF MODULATOR" ASSEMBLY REPLACEMENT PARTS LIST

| REF. | DESCRIPTION | PART NO. | REF. | DESCRIPTION | PART NO. |
|------|------------------------------------|-------------|------|---------------------------------|-------------|
| | COILS | | | | |
| L4 | 4.5 MHz Coil | 361441-2 | R17 | Carbon Film, 9.1K ohm, 5%, 1/4W | 230214-9125 |
| L5 | Peaking Coil, 5.6 uh | 361444-5690 | R18 | Carbon Film, 33K ohm, 5%, 1/4W | 230214-3335 |
| L6 | Coil | 361398-22 | R19 | Carbon Film, 680 ohm, 5%, 1/4W | 230214-6815 |
| L7 | Filter Coil | 361558-4 | R39 | Carbon Film, 22K ohm, 5%, 1/4W | 230214-2235 |
| L8 | Filter Coil | 361558-4 | R40 | Carbon Film, 10K ohm, 5%, 1/4W | 230214-1035 |
| L9 | Peaking Coil, 5.6 uh | 361444-5690 | R41 | Carbon Film, 12K ohm, 5%, 1/4W | 230214-1225 |
| L10 | Filter Coil | 361558-4 | R42 | Carbon Film, 4.3K ohm, 5%, 1/4W | 230214-4325 |
| | | | R45 | Carbon Film, 560 ohm, 5%, 1/4W | 230214-5615 |
| | CAPACITORS | | | SWITCHES | |
| C17 | Ceramic, 10 pf., 5%, 500V, N220 | 250666-1005 | S3 | Channel Select Switch | 160556-2 |
| C18 | Ceramic, 10 pf., 5%, 500V, N220 | 250666-1005 | | SEMICONDUCTORS | |
| C19 | Ceramic, .01 mfd., +80-20%, 100V | 250660-2009 | D2 | Silicon Diode | 530104-2 |
| C20 | Ceramic, 82 pf., 5%, 500V, NPO | 250546-8205 | IC6 | RF Modulator IC | 612178-1 |
| C21 | Ceramic, 220 pf., 5%, 500V | 250551-2215 | | MISCELLANEOUS | |
| C22 | Ceramic, 15 pf., 5%, 500V, NPO | 250546-1505 | J2 | RF Output Jack | 181095-1 |
| C23 | Ceramic, 68 pf., 5%, 500V, NPO | 250546-6805 | J3 | 3 Pin Connector | 181252-3 |
| C24 | Ceramic, 220 pf., 5%, 500V | 250551-2215 | | Shield (f/L6) | 636734-30 |
| C25 | Electrolytic, 10 mfd., .35V | 270109-1135 | | RF Module Box | 733292-1 |
| C32 | Trimmer, 2-22 pf. | 260220-5 | | Bottom Shield | 733293-6 |
| C35 | Electrolytic, 1 mfd., .50V | 270109-1050 | | Top Shield | 733293-7 |
| C36 | Ceramic, .01 mfd., +80-20%, 100V | 250660-2009 | | | |
| C37 | Ceramic, .001 mfd., 20%, 500V | 250554-1020 | | | |
| C50 | Ceramic, 3 pf., ± 1 pf., 500V, NPO | 250546-3096 | | | |

702669 "CONSOLE" UNIT REPLACEMENT PARTS LIST

| REF. | DESCRIPTION | PART NO. | REF. | DESCRIPTION | PART NO. |
|------|----------------------------|-------------|------|---|----------|
| J8 | Connector (f/Power Button) | 181252-2403 | | Foot, 4 used | 141737-3 |
| S1 | Power Button | 160590-3 | | Game Cord Assembly | 461218-7 |
| | Knob (f/Power Button) | 144132-1 | | -Plug (Inserted into Ant/Game Switch Box) | 180903-1 |
| | Keyboard | 160624-101 | | -Plug (Inserted in Console Unit) | 181235-9 |
| | Cabinet Top | 144087-1 | | -Cable | 461263-1 |
| | Cabinet Bottom | 144088-3 | | AC Adaptor (BJ7600 only) | 702661-1 |
| | Keyboard Frame | 144089-1 | | AC Adaptor (BK 7600 only) | 702661-2 |
| | Case Overlay | 151649-1 | | | |

702667 "PLAYER HAND CONTROL" REPLACEMENT PARTS LIST

| REF. | DESCRIPTION | PART NO. | REF. | DESCRIPTION | PART NO. |
|------|-----------------------------|----------|------|----------------------------------|----------|
| | Case Top | 144093-3 | | Hand Control P.C. Board Assembly | 703969-2 |
| | Case Bottom | 144094-1 | | -6 Pin Wafer Assembly | 181253-6 |
| | Joy Stick | 733300-3 | | -Momentary Switch Button, 9 used | 160599-1 |
| | Joy Stick Knob | 143977-2 | | -Momentary Switch, 8 used | 160599-6 |
| | Joy Stick Knob | 143975-2 | | -Momentary Switch | 160599-7 |
| | Joy Stick Retainer | 144082-2 | | Spring Actuator | 733497-1 |
| | Cover | 144083-1 | | Pin Spring | 733305-1 |
| | Actuator Plate | 144098-1 | | | |
| | Action Button | 644395-1 | | | |
| | Dirt Shield | 702597-2 | | | |
| | Cable Assembly | 181305-1 | | | |
| | -9 Pin Housing, J101 | 181252-6 | | | |
| | -Connector, P4/P5 | 144177-1 | | | |
| | -Cable Guard | 103383-1 | | | |
| | -Strain Relief Clip, 2 used | 181306-1 | | | |
| | -Contacts, 6 used | 181306-2 | | | |
| | -Contacts, 3 used | 461281-4 | | | |
| | -Flat Cable | | | | |

703965 "MAIN" P.C. BOARD ASSEMBLY REPLACEMENT PARTS LIST

| REF. | DESCRIPTION | PART NO. | REF. | DESCRIPTION | PART NO. |
|--------|-----------------------------------|-------------|------|--|-------------|
| | COILS | | | | |
| L1 | Peaking Coil, 15 uh | 361475-150 | R13 | Carbon Film, 200 ohm, 5%, 1/4W | 230214-2015 |
| L2 | 5.37 MHz Coil | 361441-7 | R14 | Carbon Film, 27K ohm, 5%, 1/4W | 230214-2735 |
| L3 | RF Choke Coil, 12 uh | 360676-25 | R15 | Carbon Film, 470 ohm, 5%, 1/4W | 230214-4715 |
| L11 | RF Choke Coil, 12 uh | 360676-25 | R16 | Carbon Film, 1K ohm, 5%, 1/4W | 230214-1025 |
| L12-23 | Peaking Coil, 5.6 uh | 361444-5690 | R30 | Carbon Film, 20K ohm, 5%, 1/4W | 230214-2035 |
| | CAPACITORS | | R31 | Carbon Film, 20K ohm, 5%, 1/4W | 230214-2035 |
| C2 | Electrolytic, 47 mfd., 16V | 270109-5115 | R32 | Carbon Film, 20K ohm, 5%, 1/4W | 230214-2035 |
| C3 | Ceramic, .01 mfd., +80-20%, 100V | 250660-2009 | R33 | Carbon Film, 20K ohm, 5%, 1/4W | 230214-2035 |
| C4 | Ceramic, 220 pf., 5%, 500V | 250551-2215 | R34 | Carbon Film, 20K ohm, 5%, 1/4W | 230214-2035 |
| C5 | Ceramic, .01 mfd., +80-20%, 100V | 250660-2009 | R35 | Carbon Film, 20K ohm, 5%, 1/4W | 230214-2035 |
| C6 | Trimmer, 2-22 pf. | 260220-5 | R36 | Carbon Film, 20K ohm, 5%, 1/4W | 230214-2035 |
| C7 | Ceramic, 10 pf., 10%, 500V, NPO | 250546-1009 | R37 | Carbon Film, 20K ohm, 5%, 1/4W | 230214-2035 |
| C8 | Ceramic, 91 pf., 5%, 500V, NPO | 250546-9105 | R43 | Carbon Film, 10K ohm, 5%, 1/4W | 230214-1035 |
| C9 | Ceramic, 150 pf., 10%, 500V, N330 | 250528-1519 | R44 | Carbon Film, 1K ohm, 5%, 1/4W | 230214-1025 |
| C10 | Ceramic, .01 mfd., +80-20%, 100V | 250660-2009 | R46 | Carbon Film, 75 ohm, 5%, 1/4W | 230214-7505 |
| C11 | Ceramic, 91 pf., 5%, 500V, NPO | 250546-9105 | R47 | Carbon Film, 33K ohm, 5%, 1/4W | 230214-3335 |
| C12 | Mylar, .1 mfd., 10%, 50V | 250642-1049 | R48 | Carbon Film, 1.6K ohm, 5%, 1/4W | 230214-1625 |
| C13 | Electrolytic, 4700 mfd., 25V | 270132-5 | R49 | Carbon Film, 33K ohm, 5%, 1/4W | 230212-3335 |
| C15 | Ceramic, 680 pf., 20%, 500V | 250551-6810 | R51 | Carbon Film, 1 ohm, 10%, 1/4W | 230212-1095 |
| C16 | Mica, 1000 pf., 10%, 100V | 250607-6973 | R52 | Carbon Film, 20K ohm, 5%, 1/4W | 230214-2035 |
| C26 | Ceramic, .01 mfd., +80-20%, 100V | 250660-2009 | R53 | Carbon Film, 20K ohm, 5%, 1/4W | 230214-2035 |
| C27 | Ceramic, .01 mfd., +80-20%, 100V | 250660-2009 | | CONTROLS | |
| C28 | Electrolytic, 1 mfd., 50V | 270109-1050 | R4 | Video Level Adjust, 1500 ohm | 220299-1522 |
| C29 | Ceramic, .01 mfd., +80-20%, 100V | 250660-2009 | | SEMICONDUCTORS | |
| C30 | Ceramic, .01 mfd., +80-20%, 100V | 250660-2009 | Q1 | NPN Silicon | 610232-2 |
| C31 | Ceramic, .01 mfd., +80-20%, 100V | 250660-2009 | Q3 | NPN, Silicon | 610124-1 |
| C33 | Ceramic, .01 mfd., +80-20%, 100V | 250660-2009 | Q4 | NPN, Silicon | 610139-2 |
| C34 | Ceramic, 1000 pf., 20%, 500V | 250551-1020 | D2 | Bridge Rectifier | 530204-1 |
| C38 | Ceramic, 680 pf., 20%, 500V | 250551-6810 | Z1 | Regulator, 5 Volt | 612103-3 |
| C41 | Polyester, .1 mfd., 20%, 100V | 250555-184 | Y1 | Crystal | 560404-3 |
| C42 | Polyester, .1 mfd., 20%, 100V | 250555-184 | IC1 | Color Encoder IC | 612160-3 |
| C43 | Polyester, 1 mfd., 20%, 100V | 250555-184 | IC2 | Dual D-Type Positive-Edge-Triggered IC | 612200-1 |
| C44 | Ceramic, 3000 pf., 5%, 500V | 250551-3025 | IC3 | Quad 2 Input Positive or Gate IC | 612194-1 |
| C45 | Ceramic, .01 mfd., +80-20%, 100V | 250660-2009 | IC4 | Quad 2 Input Positive IC | 612199-1 |
| C46 | Ceramic, 47 pf., 10%, 500V | 250551-4709 | IC5 | Graphics Display IC | 612130-1 |
| C47 | Ceramic, 1000 pf., 20%, 500V | 250551-1020 | IC7 | Microprocessor IC | 612191-1 |
| C48 | Ceramic, 220 pf., 10%, 500V | 250551-2219 | IC8 | Gated Input IC | 612197-1 |
| C49 | Electrolytic, 22 mfd., 10V | 270109-2110 | IC9 | R.A.M. IC | 612192-1 |
| C51 | Ceramic, 1000 pf., 20%, 500V | 250551-1020 | IC10 | Quad Positive-Edge-Triggered D Type IC | 612261-1 |
| C52 | Ceramic, 1000 pf., 20%, 500V | 250551-1020 | IC11 | Quad Positive-Edge-Triggered D Type IC | 612261-1 |
| C53 | Ceramic, 1000 pf., 20%, 500V | 250551-1020 | IC12 | Decoder IC | 612230-1 |
| C54 | Ceramic, 1000 pf., 20%, 500V | 250551-1020 | IC13 | Encoder IC | 612195-1 |
| C55 | Ceramic, 1000 pf., 20%, 500V | 250551-1020 | IC14 | Gated Input IC | 612197-1 |
| C56 | Ceramic, 1000 pf., 20%, 500V | 250551-1020 | | MISCELLANEOUS | |
| C57 | Ceramic, 1000 pf., 20%, 500V | 250551-1020 | J1 | Cartridge Connector | 181257-1 |
| C58 | Ceramic, 1000 pf., 20%, 500V | 250551-1020 | J4 | Left Player Input Plug, 9-Pin (BJ7600 only) | 181307-1 |
| C59 | Ceramic, 1000 pf., 20%, 500V | 250551-1020 | J4 | Left Player Input Plug, 9-Pin (BK7600 only) | 181307-3 |
| C60 | Ceramic, 1000 pf., 20%, 500V | 250551-1020 | J5 | Right Player Input Plug, 9-Pin (BJ7600 only) | 181307-1 |
| C61 | Ceramic, 1000 pf., 20%, 500V | 250551-1020 | J5 | Right Player Input Plug, 9-Pin (BK7600 only) | 181307-3 |
| C62 | Ceramic, 1000 pf., 20%, 500V | 250551-1020 | J6 | AC Adaptor Input Jack (BJ7600 only) | 181250-1 |
| C63 | Ceramic, 1000 pf., 20%, 500V | 250551-1020 | J6 | AC Adaptor Input Jack (BK7600 only) | 181328-1 |
| C64 | Ceramic, 1000 pf., 20%, 500V | 250551-1020 | J7 | Keyboard Connector | 181309-2 |
| C65 | Ceramic, 1000 pf., 20%, 500V | 250551-1020 | P3 | 3-Pin Wafer Assembly | 181254-3 |
| C66 | Ceramic, 1000 pf., 20%, 500V | 250551-1020 | P8 | 2-Pin Wafer Assembly | 181254-2 |
| C67 | Ceramic, .01 mfd., +80-20%, 100V | 250660-2009 | | IC Socket (f/IC5) | 181214-1 |
| C70 | Ceramic, .01 mfd., +80-20%, 100V | 250660-2009 | | IC Socket (f/IC7) | 181214-2 |
| | RESISTORS | | | Heat Sink (f/Z1) | 733539-1 |
| RN1 | Resistor Network | 254003-3325 | | Heat Sink (f/Z1) | 733540-1 |
| R1 | Carbon Film, 470 ohm, 5%, 1/4W | 230214-4715 | | Shorting Clip | 733683-1 |
| R2 | Carbon Film, 3.3K ohm, 5%, 1/4W | 230214-3325 | | | |
| R3 | Carbon Film, 1.2K ohm, 5%, 1/4W | 230214-1225 | | | |
| R5 | Carbon Film, 330 ohm, 5%, 1/4W | 230214-3315 | | | |
| R6 | Carbon Film, 5.6K ohm, 5%, 1/4W | 230214-5625 | | | |
| R7 | Carbon Film, 1K ohm, 5%, 1/4W | 230212-1025 | | | |
| R8 | Carbon Film, 430 ohm, 5%, 1/4W | 230214-4315 | | | |
| R9 | Carbon Film, 100 ohm, 5%, 1/4W | 230214-1015 | | | |
| R10 | Carbon Film, 3.6K ohm, 5%, 1/4W | 230214-3625 | | | |
| R11 | Carbon Film, 2.2K ohm, 5%, 1/4W | 230214-2225 | | | |
| R12 | Carbon Film, 27 ohm, 5%, 1/4W | 230214-2705 | | | |

701702-7 "ANTENNA/GAME SWITCH BOX" ASSEMBLY REPLACEMENT PARTS LIST

| REF. | DESCRIPTION | PART NO. |
|------|---|----------|
| | Antenna Box Bottom | 143674-1 |
| | Antenna Box Top | 143676-1 |
| | Plastic Hook | 143719-1 |
| | Antenna Unit | 703748-6 |
| | -Antenna/Game Switch, S1 | 160499-3 |
| | -Game Cord Socket, J1 | 180902-4 |
| | -Balun Antenna, T1 | 361108-2 |
| | -Terminal (2 used) | 200495-1 |
| | -Cable Assembly, Twin Lead | 782237-2 |
| | -Solderless Terminal, 2 used (f/782237) | 200517-1 |
| | -300 ohm wire (f/782237) | 461144-1 |
| | -Antenna Board Shield | 733573-1 |