

User Manual of MOBILUS C-MR external receiver

www.mobilus.pl

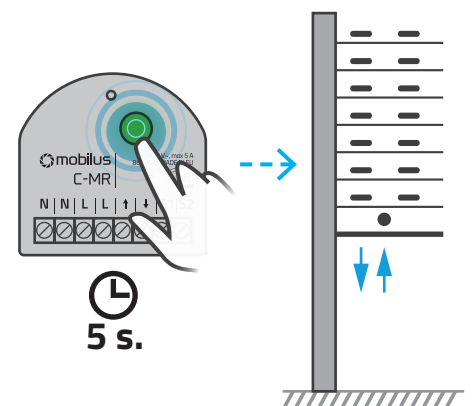
1. IMPORTANT INFORMATIONS

- When unpacking the unit, make sure that there is no damage in the transport. If so, you should immediately inform the supplier.
- Read the operating manual carefully before use
- **MOBILUS C-MR** module should be powered by 230 V ~, 50 Hz. Its installation should only be carried out by persons with electrical qualifications according to the enclosed electrical diagram in accordance with all applicable regulations.
- **MOBILUS C-MR** module is designed to work with all **COSMO / COSMO | 2WAY** series remote controls.
- The range of the radio control is limited by regulations for maximum power of the remote control and the conditions of the installation of the equipment. When designing the location of the remote control, consider limiting the range to about 20m by 2 walls.
- Declaration of Conformity:
We declare under our sole responsibility that the **MOBILUS C-MR** complies with the following European Directives:
 1. 2014/53 / EU RED Radio Directive;
 2. 2014/30 / EU Electromagnetic Compatibility Directive.
 3. 73/23/EWG Low Voltage Directive.

2. ENTRY INTO THE MODULE PROGRAMMING MODE

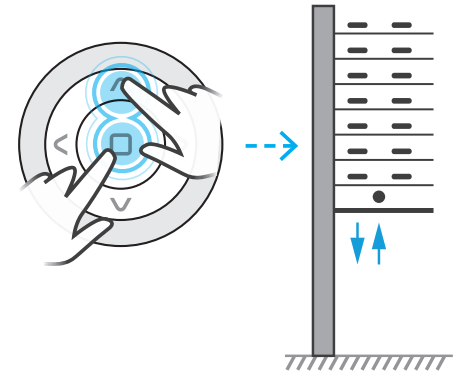
Press and hold a programming button on module **MOBILUS C-MR** above 5 sec until the connected actuator executes one sequence of noticeable and audible micro movements down / up confirming the entrance of the receiver in the PROGRAMMING MODE.

WARNING! *If within 20 seconds no programming will be performed, the MOBILUS C-MR radio module automatically exits from the programming mode. Connected actuator executes one sequence of noticeable and audible micro movements down / up, blinks are stopped.*



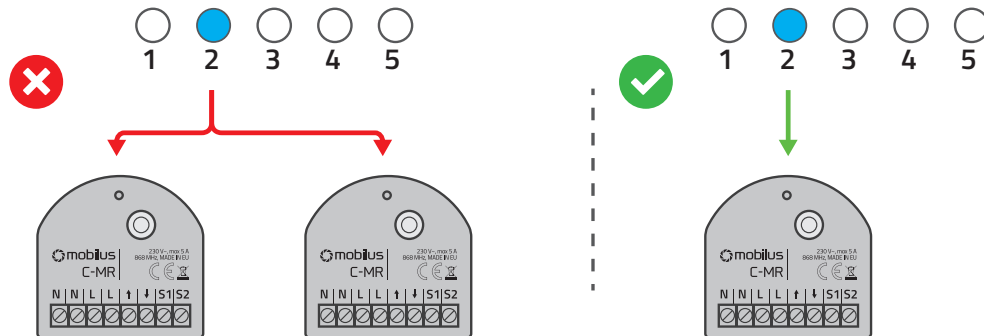
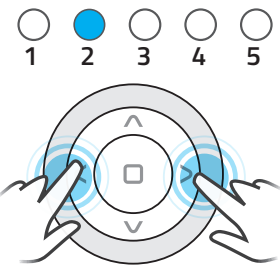
3. LOADING THE MASTER-A * CODE TO THE RECEIVER MEMORY

1. Enter the **MOBILUS C-MR PROGRAMMING MODE**.
2. Press and hold the **STOP** and **UP** buttons simultaneously on the remote control until the connected actuator executes one sequence of noticeable and audible micro movements down / up.
3. The **MASTER-a** code has been loaded into memory and the module goes to the **WORK MODE**. Now, with the **MASTER** remote control, you can operate the units or enter the **PROGRAM MODE** to load more remote controls.



WARNING In the case of a multi-channel remote control select only one channel to be **MASTER**.

NOTE For the convenience of programming, it is recommended that each **COSMO | C-MR** module had its own separate **MASTER** (remote control (separate channel for multi-channel remotes). Avoid situations where several **COSMO | C-MR** modules remote controls will have common **MASTER** (shared channel).



***MASTER** - remote control or channel (in the case of a multi-channel remotes) loaded first into the memory of the **MOBILUS C-MR** module. Allows you to program further remote controls.

4. PROGRAMMING OF THE SECOND AND EVERY OTHER REMOTE CONTROL

1. On the **MASTER** remote control, simultaneously press and hold the **STOP** and **UP** until the connected actuator executes one sequence of noticeable and audible micro movements down / up confirming the entrance of the receiver in the PROGRAMMING MODE - Fig. 4a. Additionally in this mode every 1 sec. the diode is blinking.
2. On the second remote control (for the multi-channel remote control, select the channel you want to program), press and hold both **STOP** and **UP** buttons simultaneously, until the connected actuator performs one sequence of noticeable and audible micro movements down / up. The remote (channel) was loaded into the receiver's memory - Fig. 4b.

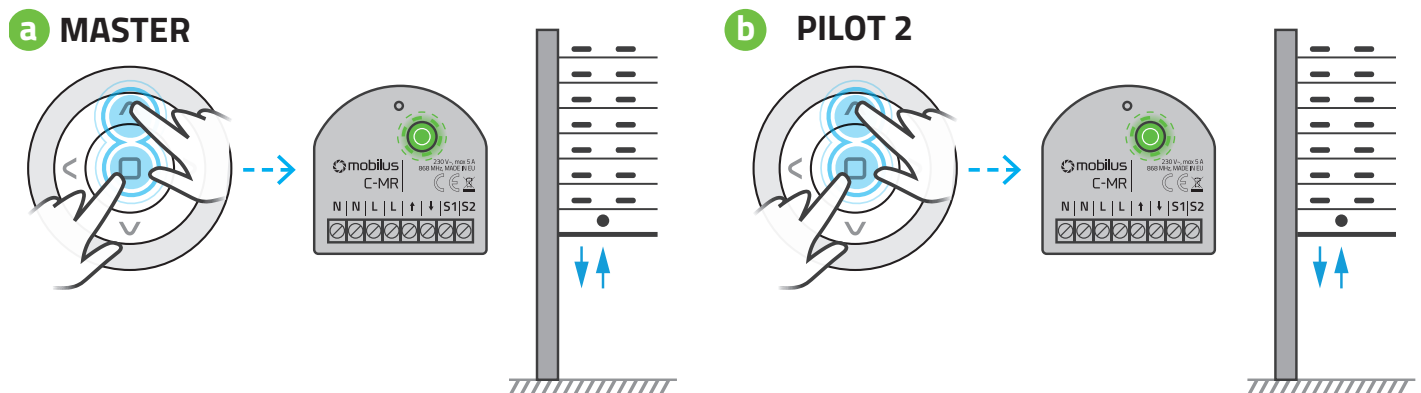


Fig. 4

Repeat step 2 to load the next remote control. If, however, no programming operation is started within 20 seconds, the module automatically returns to operating mode. Return to operating mode can also be performed manually using **MASTER**. In such a situation, press and hold the **STOP** and **UP MASTER** buttons. In both cases, the return to operating mode will be confirmed by a single sequence of micro movements down / up of the connected actuator.

5. CHANGING THE DIRECTION OF THE ACTUATOR

1. If you press the **UP** button on the remote control and the armor goes down, change the direction of rotation of the drive. At the same time, press and hold:
 - a) on the remote control **COSMO | HM, | HB, | G3+, | WT9, | WT** buttons **STOP** and **DOWN** - Fig. 5b;
 - b) on the remote control **COSMO | HT, | H24, | H1, | H5, | G, | W1, | W7** buttons **DOWN** and **UP** - Fig. 5c;
 - c) on the remote control **COSMO | HCT UP** and **F3** buttons - Fig. 5d;until the drive executes one sequence of micro down / up moves.
2. Check the **UP / DOWN** buttons - Fig. 5e.

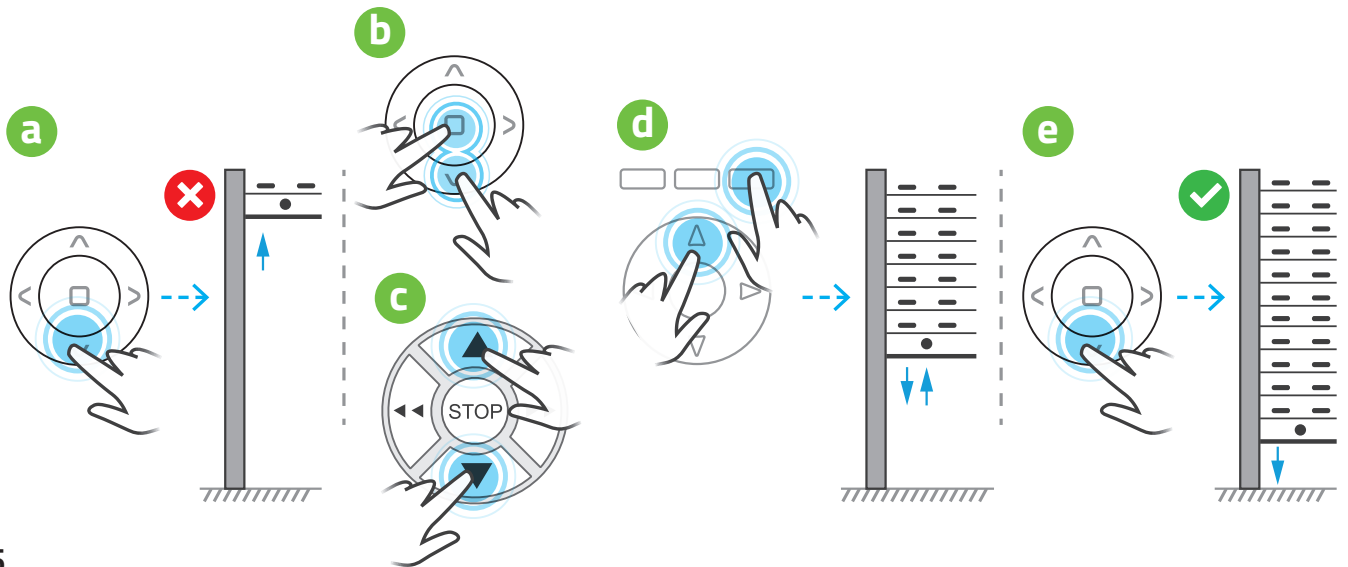


Fig. 5

6. C-MR MODULE RESET - FACTORY SETTINGS

WARNING!!! RESTORATION OF FACTORY SETTINGS erases all programmed remotes from the MOBILUS C-MR module.

1. Enter the PROGRAMMING MODE for the **MOBILUS C-MR** module - Fig. 6a.
2. In the PROGRAMMING MODE, press and hold the programming key above 5 seconds - Fig. 6b. All previously loaded remote modules have been removed from the memory module which confirms one sequence of noticeable and audible micro moves down / up of the connected actuator.

CONTINUED 6. C-MR MODULE RESET - FACTORY SETTINGS

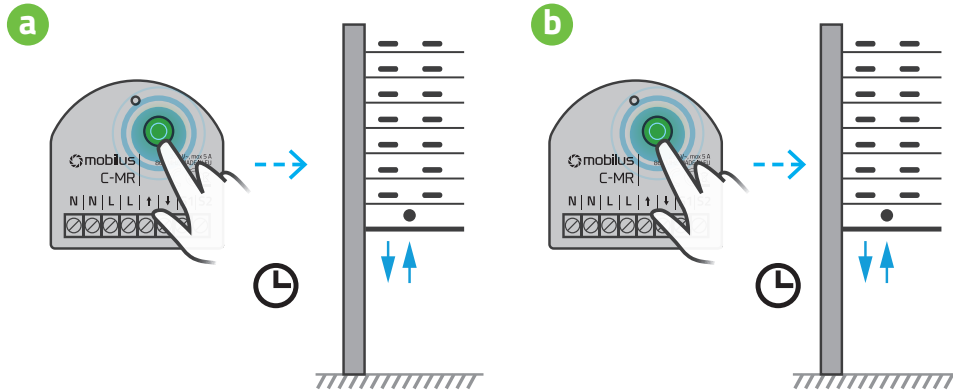


Fig. 6

7. REMOVAL OF INDIVIDUAL REMOTES (CHANNELS)

It is possible to delete only one of the programmed remotes (not for MASTER remote). To do this:

1. On the **MASTER**, press simultaneously and hold the **STOP** and **UP** buttons until the connected actuator executes one sequence of noticeable and audible micro movements down / up, confirming the receiver's entrance into the programming mode - Fig. 7a. Additionally in this mode every 1 sec. the diode is blinking.
2. On the remote control (channel) that you want to delete, press and hold the **STOP** and **UP** buttons simultaneously until the connected actuator performs one sequence of noticeable and audible micro movements down / up, confirming the removal of the pilot code from the actuator memory - Fig. 7b.

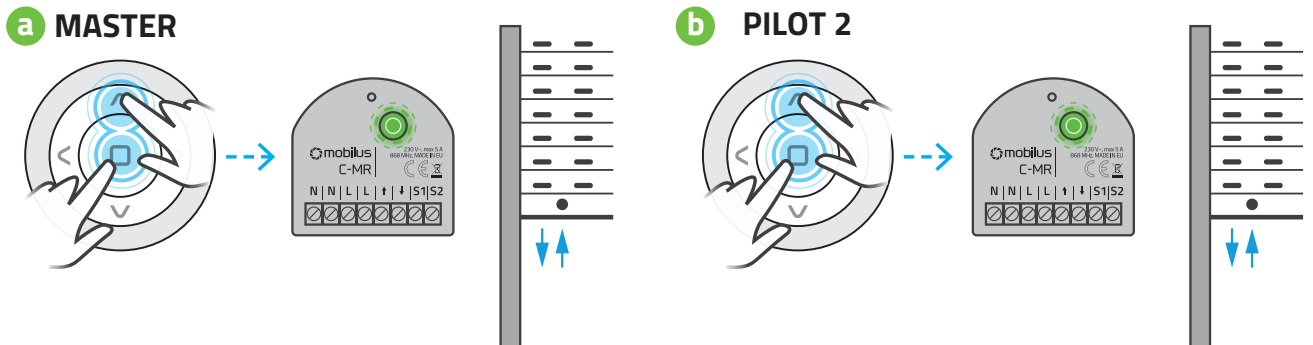


Fig. 7

CONTINUED 7. REMOVAL OF INDIVIDUAL REMOTES (CHANNELS)

WARNING! Repeat step 2 to proceed to remove the next remote control. However, if within 20 sec. no programming operation is started, the receiver automatically returns to operating mode. Return to operating mode can also be performed manually using the **MASTER**. In such a situation, simultaneously press and hold the **STOP** and **MASTER** buttons until the connected actuator executes one sequence of noticeable and audible micro movements down / up. In both cases, the return to operating mode will be through one sequence of micro down / top moves of the connected actuator.

8. CONNECTING THE ADDITIONAL SWITCH / DRIVER

It is possible to connect an external keyboard connector (without support) - Fig. 8.1, bell connector - Fig. 8.2, control via a controller with relay output - Fig. 8.3. They must be connected according to the attached diagram.

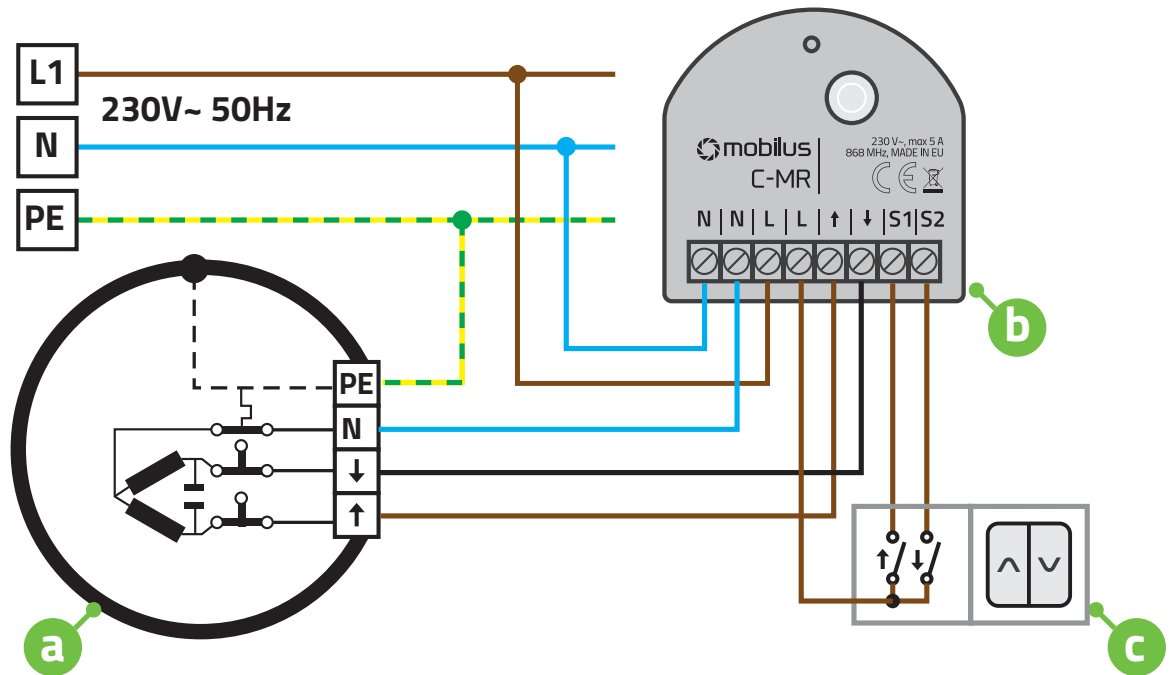


Fig. 8.1

CONTINUED 8. CONNECTING THE ADDITIONAL SWITCH / DRIVER

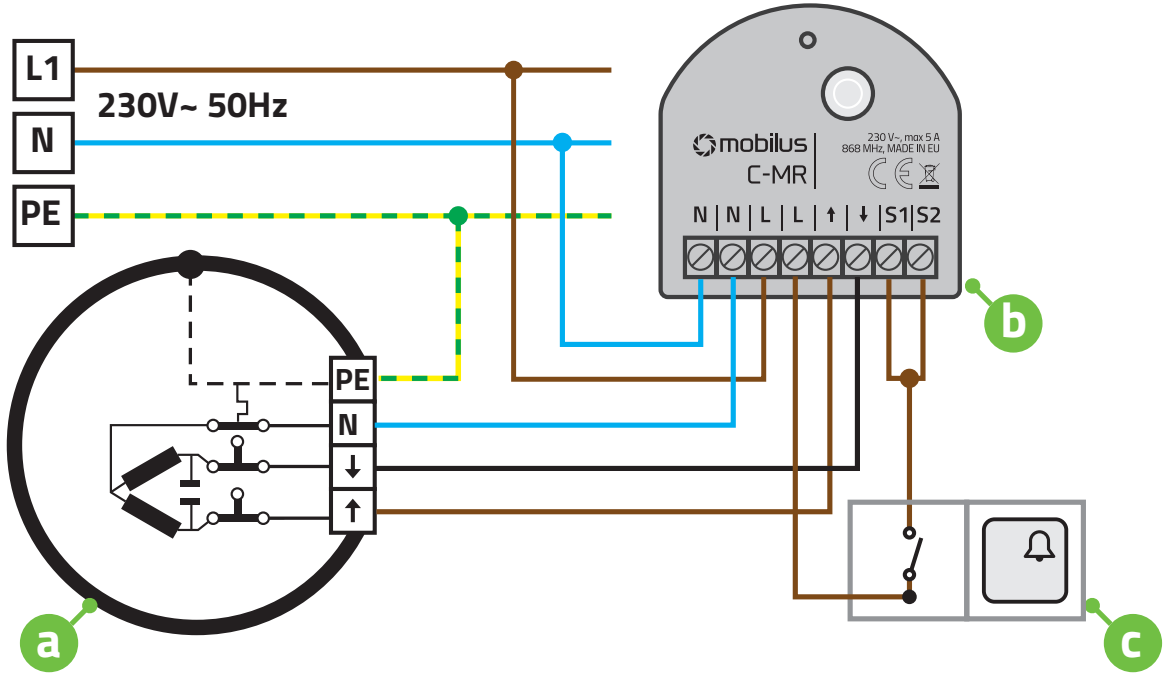


Fig. 8.2

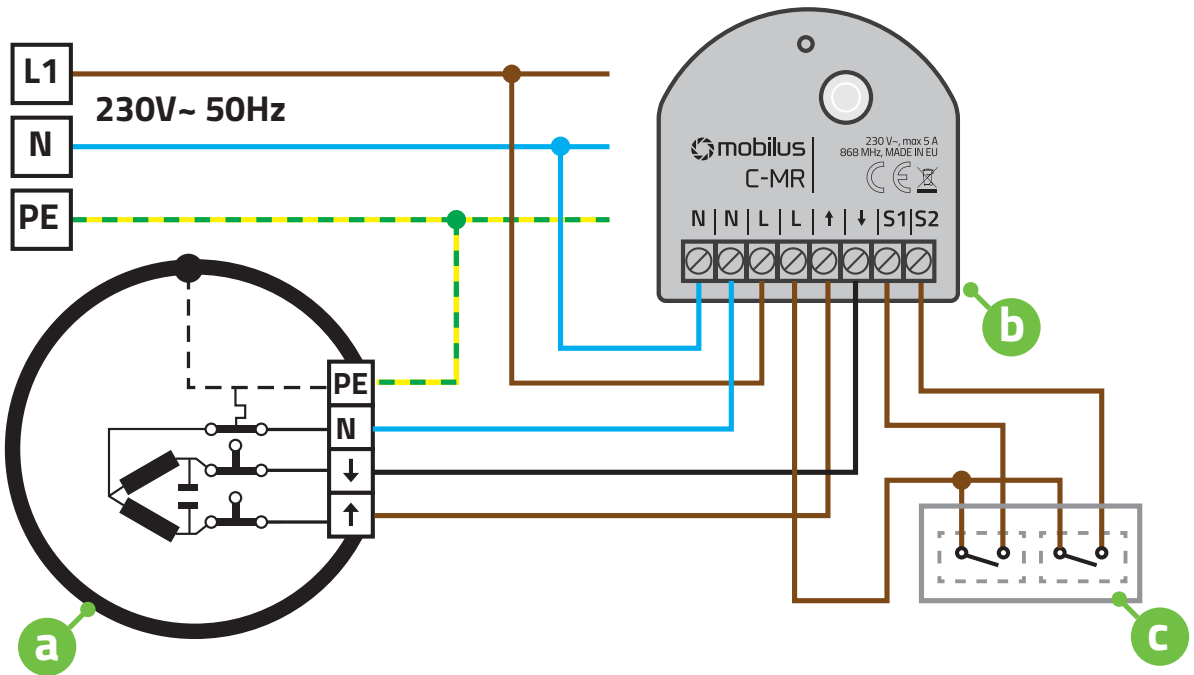


Fig. 8.3

9. CHANGING THE OPERATION MODE OF CONTROL BUTTONS

The MOBILUS C-MR module allows you to change the operating mode of the control buttons

I. **MODE WITH HOLD UP** - Pressing the key causes the roller shutter to be lowered or raised.

II. **MODE WITHOUT HOLD UP** - Lowering or raising the controlled roller shutter continues as long as the control key is pressed.

To change the operation mode of the control buttons:

1. On the **MASTER**, press simultaneously and hold the **STOP** and **UP** buttons until the connected actuator performs one sequence of noticeable and audible micro movements down / up confirming the receiver entrance in the PROGRAMMING MODE - Fig. 9a. Additionally in this mode every 1 sec. the diode is blinking.
2. On the **MASTER**, press the **DOWN** button and hold until the actuator connected to the **COSMO C-MR** module will perform two sequences of noticeable and audible micro movements down / up. HOLD UP MODE is active - Fig. 9b.
3. To switch to MODE WITHOUT MAINTAIN, repeat step 1, then on the **MASTER** push button **DOWN** and hold until connected to the module **COSMO C-MR** actuator performs a sequence of visible and audible micro movements up / down - Fig. 9c.

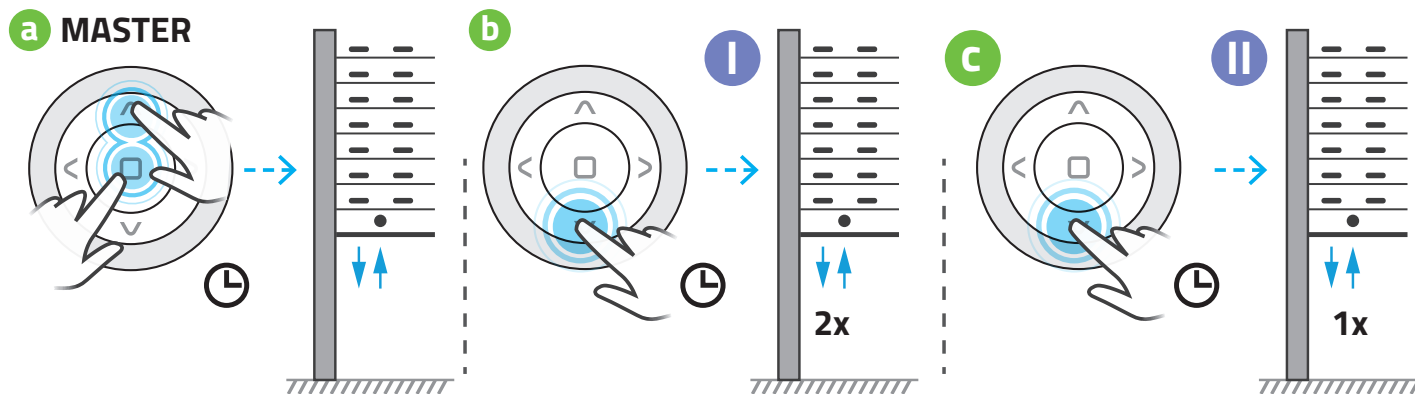


Fig. 9

10. REPEATER FUNCTION

SIGNAL REPEATER - This feature allows you to expand the radio control area. The **MOBILUS C-MR** module with the repeater function enabled receives signals from the controller or actuators and passes them forward. Thanks to the furthest located receivers which are not within the controller can receive and transmit information through modules located indirectly. Turn on the repeater function:

1. Press the **STOP** and **UP** buttons simultaneously on the **MASTER** until the connected actuator executes one sequence of noticeable and audible micro movements down / up, confirming entry into the PROGRAMMING MODE. Additionally in this mode every 1 sec. the diode is blinking.
2. On the remote control, press the button sequence: **UP, STOP, DOWN, UP, STOP, DOWN**. Activation of the repeater function will cause three sequences of **DOWN-UP** micro-movements by the actuator.
3. Repeat step 1 to deactivate the repeater function. Then press the button sequence: **UP, STOP, DOWN, UP, STOP, DOWN** - confirmation of deactivation is the execution of two sequences of micro-**DOWN-UP** movements by connected actuator.

WARNING! Turn on the repeater function only on devices that are within range of the signal range. Because of the efficient work, we recommend that you enable the signal repeater function on up to three devices in the facility. Unreasonable inclusion of signal repeater on many devices may cause interference in all radio equipment.

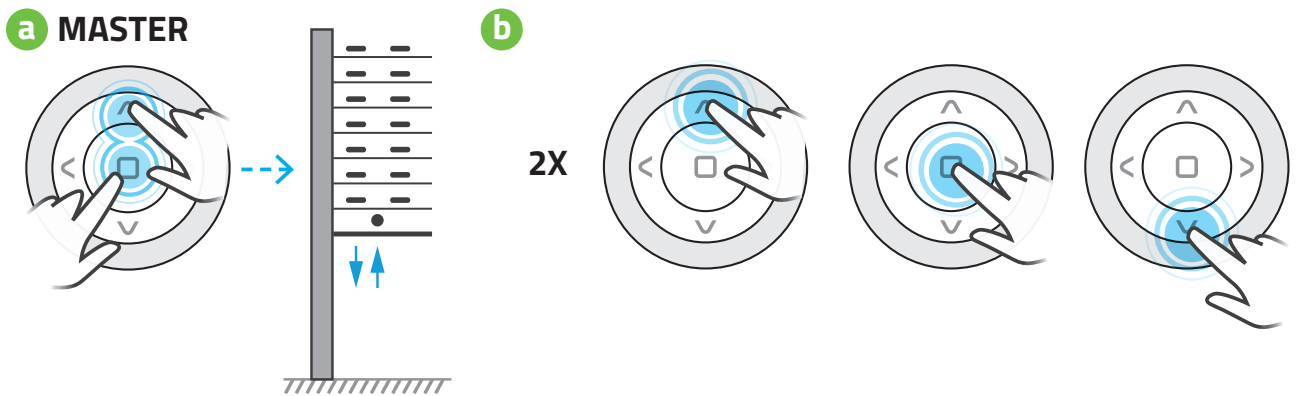


Fig. 10

11. CONTINUOUS MODE - ON / OFF SWITCH

1. Press and hold the programming button on the **MOBILUS C-MR** receiver until the connected actuator executes one sequence of noticeable and audible micro movements down / up confirming the receiver's entry into the programming mode (every 1 sec the LED flashes).
2. Press programming button in **COSMO C-MR** module three times, at short intervals. The module will confirm the change mode by multiple beep sound and switching relays. After changing the operating mode, the module will exit from the PROGRAMMING MODE. - Fig.11.1b.

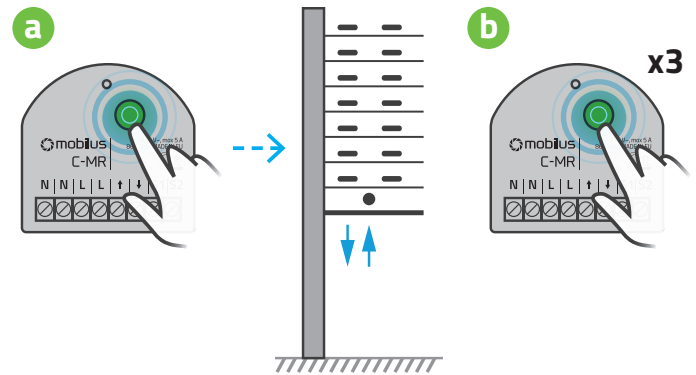


Fig. 11.1

To deactivate CONTINUOUS MODE - repeat the procedure in steps 1 and 2.

IN THE CONTINUOUS MODE, the function of the button connected to terminal **S1 / S2** changes. The button acts as a light switch - the switch under the terminal **S1** activates the relay in the **UP** direction, when the button is off, the relay turns **OFF**. Switched under the **S2** terminal works analogically - in the **DOWN** direction.

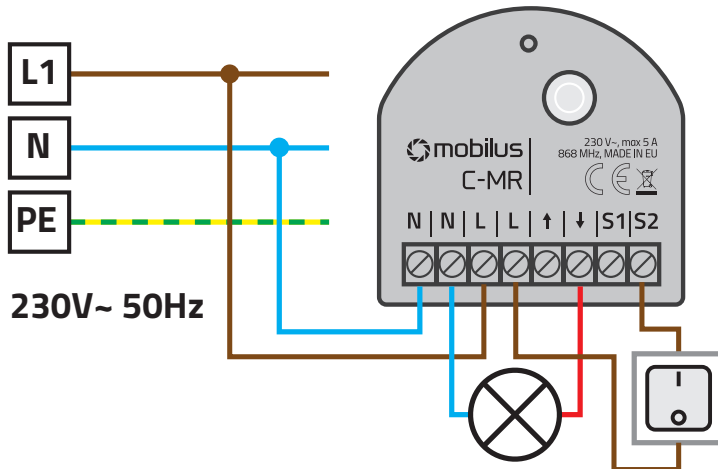


Fig. 11.2

CONTINUOUS OPERATIONAL MODE.
Illumination connected to inputs 2 and 6 - control with **DOWN** command.

CONTINUED 11. CONTINUOUS MODE - ON / OFF SWITCH

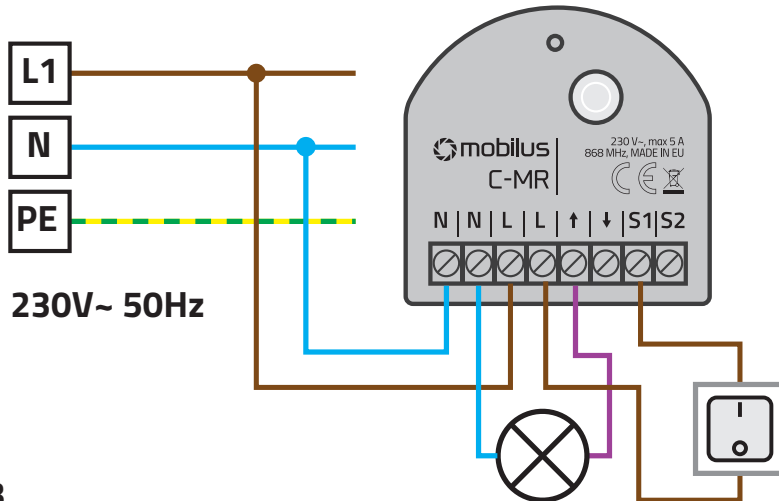


Fig. 11.3

CONTINUOUS OPERATIONAL MODE. Illumination connected to inputs 2 and 5 - control with **DOWN** command.

12. BIDIRECTIONALITY

MOBILUS C-MR with two-way communication with the remote control allows control of the state of shutter position (eg. open, closed, intermediate level, overload detection).

Proper operation of bidirectional communication requires the use of pilots with bidirectional communication.

Remote controls supporting two-way communication: **MOBILUS COSMO | HCT, COSMO | G3+, COSMO | HM, COSMO | HB, COSMO | WT9, COSMO | WT.**

13. BIDIRECTIONAL - INFORMATION ABOUT THE POSITION OF THE BLIND

MOBILUS C-MR transmits information about the end position and intermediate position blinds to remote controls. The mode is switched on automatically - there is no possibility of deactivation.

14. BI-DIRECTIONAL - OVERLOAD INFORMATION

MOBILUS C-MR transmits information to remotes about overload - for example, it may be related to a housing lock occurring at the time of raising or lowering. Mode is factory-setted - it is possible to turn off.

CONTINUED 14. BI-DIRECTIONAL - OVERLOAD INFORMATION

Enable / disable of overload detection:

1. At the **MASTER** remote control press and hold the **STOP** and **UP** buttons simultaneously until the connected actuator performs one sequence of noticeable and audible micro movements down / up confirming the receiver input into the programming mode - Fig. 14a. Additionally in this mode every 1 sec. the diode is blinking.
2. On the **MASTER**, press the **STOP** button and hold until the actuator connected to the **MOBILUS C-MR** module will perform two sequences of noticeable and audible micro movements down / up. Overload detection active - Fig. 14b.
3. To stop the overload detection, repeat step 1. Then press the **STOP** button on the **MASTER** control and hold until the actuator connected to the **MOBILUS C-MR** module will perform 1 sequence of noticeable and audible micro moves down / up - Fig. 14c.

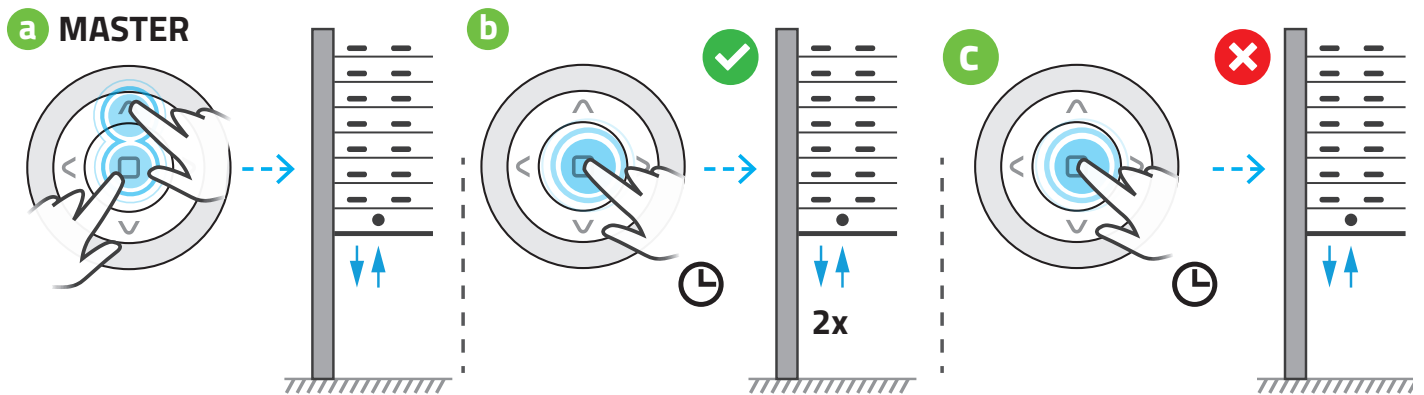


Fig. 14

15. SETTING OF THE SWITCHING TIME OF RELAYS

MOBILUS C-MR allows you to change the relay switching time. This operation is necessary, for example, for very high shutters. By default this time is 120 seconds.

1. Press **MASTER** at the same time and hold the **STOP** and **UP** buttons until the connected actuator performs one sequence of noticeable and audible micro movements down / up, confirming the receiver entry into the programming mode - Fig. 15a. Additionally in this mode every 1 sec. the LED flashes.

CONTINUED 15. SETTING OF THE SWITCHING TIME OF RELAYS

2. On the **MASTER**, press the **UP** button - Fig. 15b. The blind will begin to rise.
3. At the moment when the user presses the **STOP** key, the new relay operating time is saved - Fig. 15c.

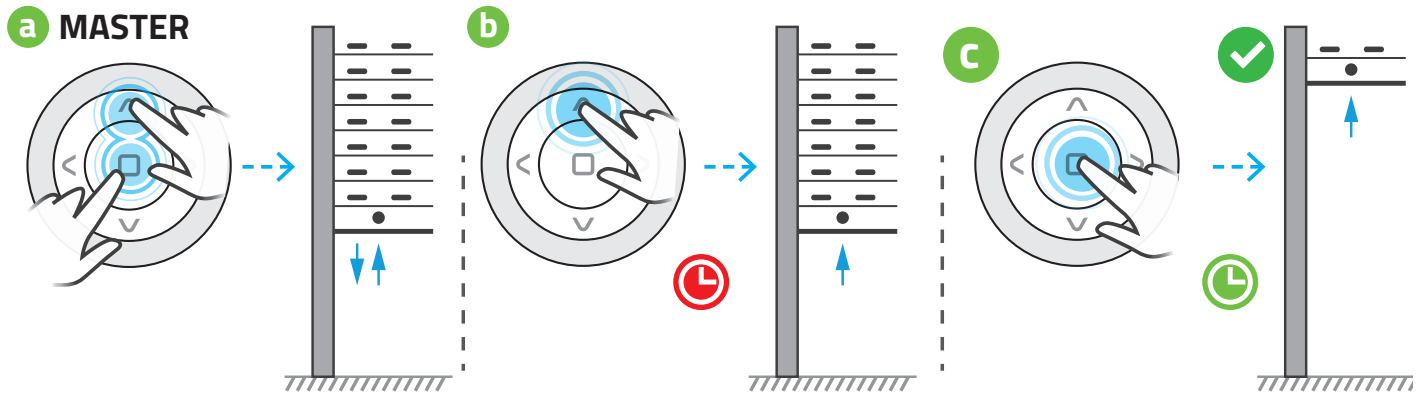
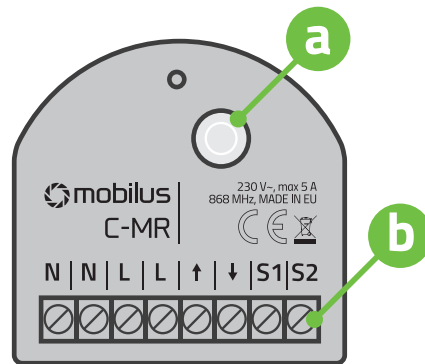


Fig.15

16. PRODUCT DESCRIPTION



a) Programming button;

b) Connection terminals;

N - neutral;	↑ - UP;
N - neutral;	↓ - DOWN;
L - phase ;	S1 - switch up;
L - phase;	S2 - switch down;

17. CONTROL REMOTES - „COSMO“ SERIES



COSMO | HCT



COSMO | HB



COSMO | HM



COSMO | G3+



COSMO | WT



COSMO | WT9



COSMO | L1



COSMO | L5



MOBILUS MOTOR Spółka z o.o.

ul. Miętowa 37, 61-680 Poznań, PL

tel. +48 61 825 81 11, fax +48 61 825 80 52

VAT NO. PL9721078008

Wersja 1.0ENG, 161124

www.mobilus.pl