

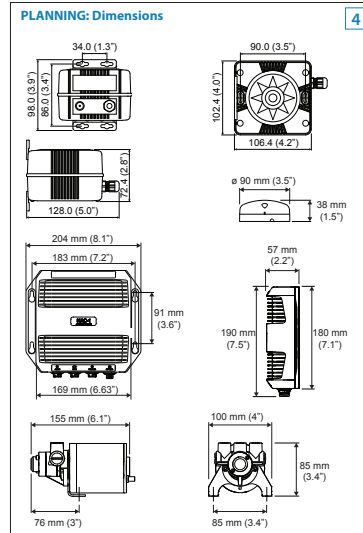
Technical specifications	
NAC-1	
Operating temperature	-25°C to +55°C (13°F to 131°F)
Protection	Splashproof, IPx5
Weight	0.6 kg (1.3 lbs)
Power supply	9-16 V DC
Load	140 mA + drive unit load
Performance	Drive 8 A cont., 16 A for 1 s
Pump-1	
Operating temperature	-15°C to +75°C (5°F to 167°F)
Protection	Splashproof, IPx5
Weight	2.2 kg (4.9 lbs)
Load	5 A at 8 bar (116 psi), 7 A at 24 bar (350 psi)
Performance	0.8 l/min at 24 bar (350 psi)
GS25/Point-1	
Operating temperature	-25°C to +60°C (13°F to 140°F)
Protection	Watertight, IPx7
Weight	0.14 kg (0.31 lbs)
Power supply	9-16 V DC
Load	<100 mA @ 12 V DC
Performance	Headings: +/- 3°, Horiz. accuracy: 3 m (9.8 ft)
Standby/Auto button	
Operating temperature	-25°C to +55°C (13°F to 131°F)
Protection	Splashproof, IPx5
Weight	0.04 kg (0.09 lbs) (including cable)
RC42N	
Operating temperature	0°C to +55°C (32°F to 131°F)
Protection	IP56
Weight	0.4 kg (0.9 lbs)
Power supply and interface	8-16 V via NMEA 2000
Power consumption	1.4 W
Accuracy	± 3 degrees after calibration
Compass safe distance	0.5 m (1.7')

PLANNING: Tools needed

- Use to mount Pump-1, NAC-1 and heading sensor.
- Drill holes for screws, larger dimensions for hoses.
- Wrenches that fit the hoses.
- Cup or can for oil spill.
- Tape.
- Tools to connect power cables at battery.
- Gloves (disposable type).

PLANNING: Cable lengths

Refer to Wiring diagram (point 15) to find the various cable lengths.



PLANNING: GS25/Point-1, Mounting location

GS25/Point-1
The antenna contains a magnetic heading sensor and should not be mounted within 1 meter (3.3 ft) of any potential magnetic source.

RC42N
Select a location that provides a solid mounting place free from vibration, min. 1 meter (3.3 ft) away from any potential magnetic source, and as close to the vessel's centre of roll and pitch as possible, i.e. close to the water line.

Potential sources for magnetic/electromagnetic interference include:

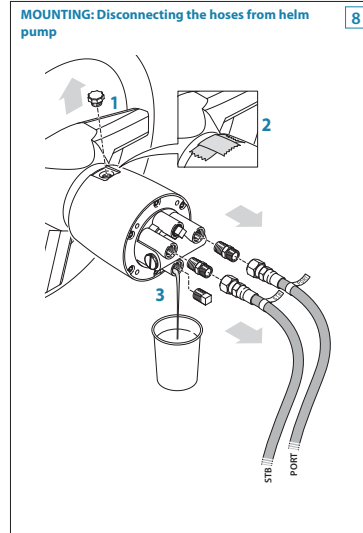
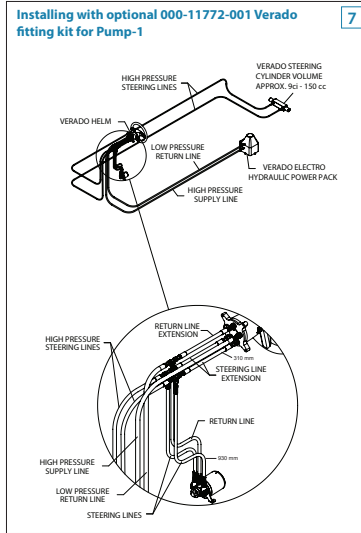
- Electrical Motors/Magnets/Moving Metal Items
- Outboard Engines
- High current electrical sources such as main power cables, batteries, distribution panels etc.

PLANNING: Pump-1, Mounting location

Compatibility information

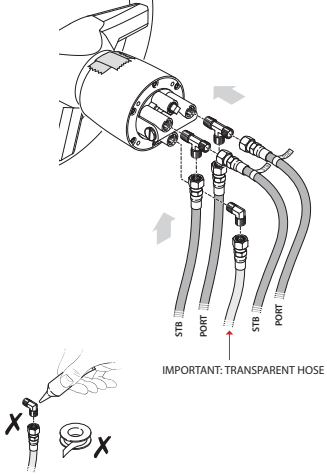
The hydraulic kit comes with 1/4 NPT 9/16 UNF fittings for nylon tube or flexible hoses which make them ideally suited for the following steering systems:

- Teleflex SeaStar HC5345, HC5347, HC5348, HC5358.
- Teleflex BayStar HC4600, HC4645, HC4647, HC4648, HC4658.
- Hynautic K6 Steering Rams.
- Also rams from Vetus, Uflex, Lecomble and Schmitt can be used.



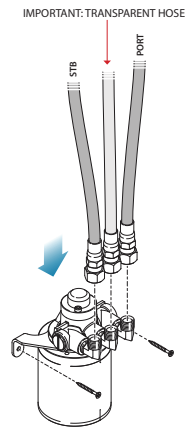
MOUNTING: Connect hoses to helm pump

9



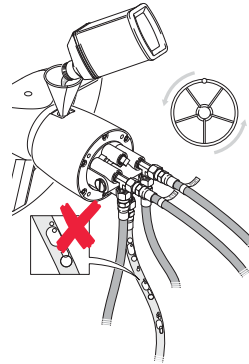
MOUNTING: Pump-1, Connect hoses

10



MOUNTING: Bleeding

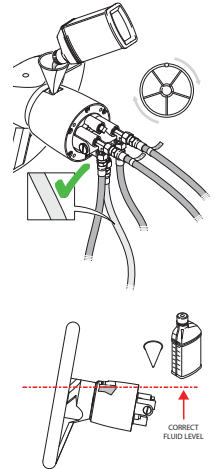
11



Turn wheel gently in both directions, and refill oil.
Repeat turning and refilling until the oil level is stable and no air bubbles left in the transparent tube, and the outboard engine responds firmly.
If air bubbles still remain in the system, follow the bleeding procedure described for the outboard cylinder.

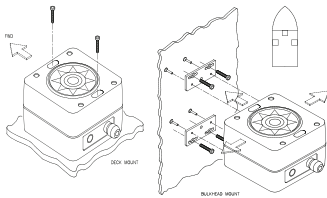
MOUNTING: Pump-1, Refill oil and bleed system

12

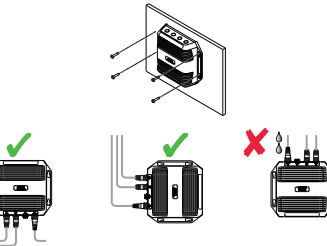


MOUNTING: RC42N

13

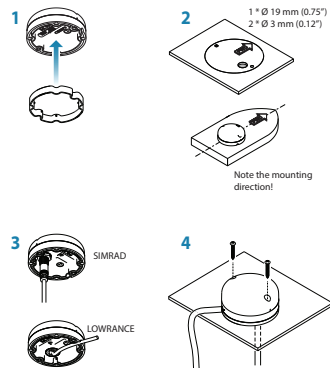


MOUNTING: NAC-1



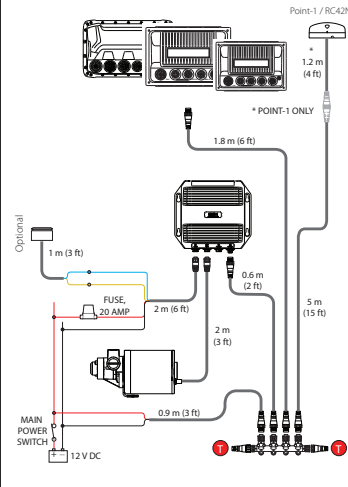
MOUNTING: GS25/Point-1

14



WIRING: Wiring diagram

15



IMPORTANT: Check hoses for leaks

16



Configuration

Refer to your Autopilot controller's documentation for setup instructions.

17