



BLAST L156X

Warranty

Limefuel provides our customers with a 12 month warranty from the date of purchase. Please visit limefuel.com for terms and to learn more.

Contact

For questions, inquiries or comments concerning our products, please email support@limefuel.com. Additional product information and a downloadable version of this manual can be found online at limefuel.com.

 limefuel.com

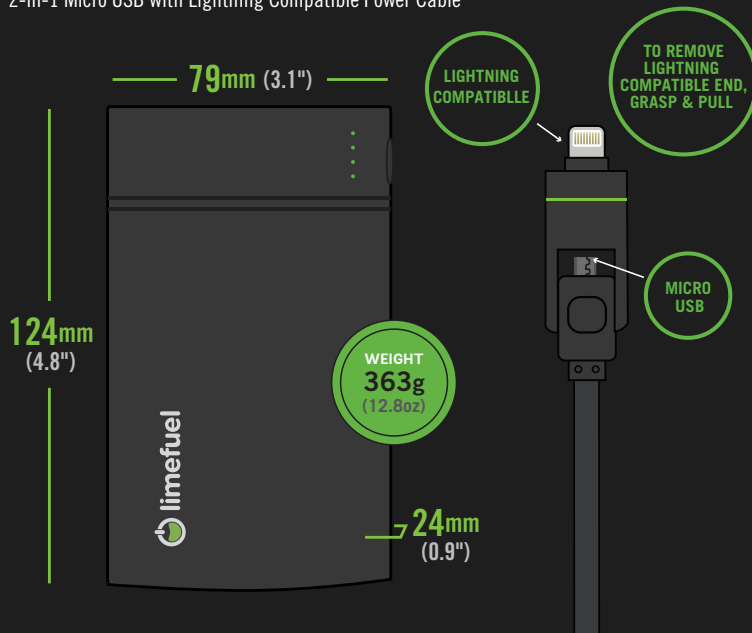
 facebook.com/limefuel

 [@limefuel](https://twitter.com/limefuel)

WHAT'S IN THE BOX?

15600mAh External Battery

2-in-1 Micro USB with Lightning Compatible Power Cable



SPECIFICATIONS

BATTERY CAPACITY	15600 MAH / 57.72 WH
BATTERY CELL	LITHIUM-ION
INPUT	5V/2.0A (MAX)
INPUT CHARGING TIME	9-16 HOURS
TOTAL OUTPUT	5V/4.2A
OUTPUT 1	5V/2.4A (MAX)
OUTPUT 2	5V/2.4A (MAX)
CYCLE LIFE	OVER 500 USES

Performance (Depending on device)

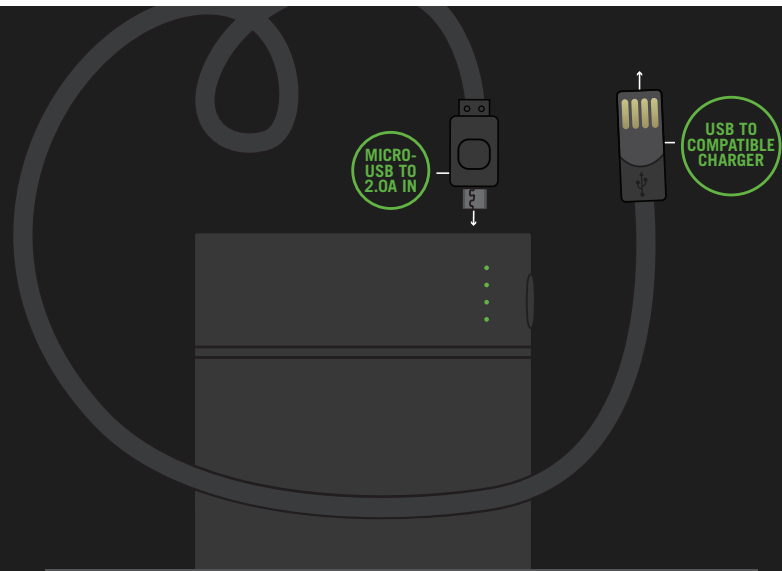
INTERNET	Up to 103 additional hours
TALK	Up to 134 additional hours
MUSIC	Up to 359 additional hours
GAMING	Up to 109 additional hours

INSTRUCTIONS



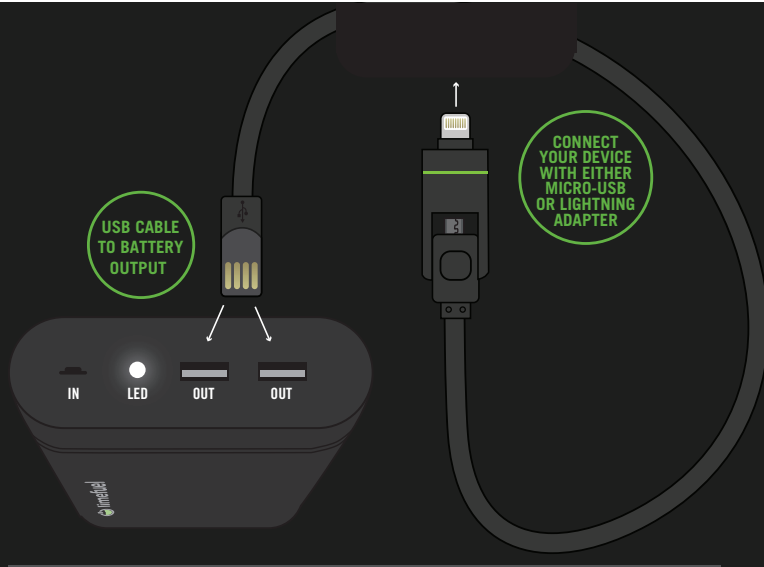
Powering On and Off

Simply pressing the power button turns on the unit. Power level of the external battery is indicated by four LED lights. Each LED light represents a 25% range of power. Unit will automatically turn off after being unplugged from charger/device or once device is fully charged. Press power button twice to turn built-in flash light on and off.



Charging Your Battery

Connect the Micro USB end of the included charging cable into the external battery input port. Insert the USB end into a compatible wall charger, car charger or computer USB port and battery will begin to charge. Once battery is fully charged, all LED lights will be lit and unit will automatically turn off after being unplugged.



Charging Your Device

The external battery has two output ports, both 5V/2.4A. Connect the USB power cable to one of the two USB output ports on the battery. If using the included USB power cable, attach the proper adapter for your device and connect the device to the cable. Battery will automatically turn on when cable and device are connected to the output port.

Compatible Devices

Most electronic devices meant to be charged from a USB source: iPhone, iPad, iPod, MP3 players, Android Phones, Windows Phones, Smartphones, Tablets, Kindle, Gaming Devices, GPS, digital cameras and camcorders, mobile phones, portable speakers and headphones, and bluetooth devices.

Does NOT charge laptops.

Proper Use and Safety

Read the following information before using external battery. Charging time for battery depends on charging method used. Do not pierce or mechanically damage the battery. Do not expose battery to heat over 45°C (113°F). Never throw into water, chemical solvents or fire. Use for intended purpose only. Do not disassemble or modify battery. Stop using battery immediately if it begins to smoke, a strange smell appears, battery leaks or distorts in any way. Not for children.

Recycle

When your Limefuel battery is no longer pumping up your devices, please recycle it responsibly so it can live again. The lithium-ion and lithium polymer batteries contained in Limefuel external battery packs should not be tossed out with everyday refuse. Doing so could harm the environment. Team Limefuel asks that you recycle your Limefuel battery responsibly. Many cities offer battery recycling services. Regulations may vary per municipality or state.