



**Models SXA1900HX,
SXA2800HX,SXB2800HX,
SXB4000HX, SXB5500HX(S),
SXB7000HX(S)**

**Gasoline Powered Generators
Owner's Manual**

Introduction 1
Features & Specifications 1
Safety Precaution 2,3
Before Starting Engine 3
Operation 4,5,6,7
Stopping Operation 8
Maintenance & Storage 8
Wattage Information 9
Troubleshooting 9,10

Customer Service Hotline:
1-800-461-1323
Visit our website:
www.kodiakpower.ca

IMPORTANT: Do not operate this equipment until you have read and understand all of the enclosed Owner's Manuals. Carefully read all **Warnings, Safety Precautions, Assembly and Operating Instructions, Maintenance and Storage information.**

Introduction

Dear Customer:

You are now the proud owner of a Kodiak generator. Kodiak generators are carefully designed and manufactured to give you *safe, dependable service*. To obtain the best use of your generator, please read and understand this manual as well as the Honda Engine Owner's Manual. Failure to do so could result in personal injury or equipment damage.

Similar to all mechanical products, your machine will occasionally require routine maintenance. This manual and the Honda Engine Owner's manual should be read carefully before operating or performing any adjustments or maintenance on your machine.

This manual as well as the Honda Engine Owner's manual should be considered a permanent part of the generator and should always remain with the unit. All information contained in this manual reflects the latest product data at the time of publication. Specifications are subject to change without prior notification or obligation.

Features & Specifications

A. Features of the full range of Kodiak generators

	SXA1900	SXA2800	SXB2800	SXB4000	SXB5500	SXB7000
Honda OHV Engine	•	•	•	•	•	•
Full Frame Protection	•	•	•	•	•	•
Oil Alert	•	•	•	•	•	•
Automatic Idle Control				•	•	•
Voltmeter			•	•	•	•
Voltage Regulator	•	•	•	•	•	•
DC Output			•	•	•	•
No-Fuse Breaker	•	•	•	•	•	•
Optional Electric Start					•	•

B. Specifications*

Model	SXA1900HX	SXA2800HX	SXB2800HX	SXB4000HX	SXB5500HX/ SXB5500HXS	SXB7000HX/ SXB7000HXS
Generator Type	Brushless, self exciting 2 pole single phase					
Engine: Model	GX120	GX160	GX160	GX240	GX340	GX390
HP	4	5.5	5.5	8	11	13
Tank Capacity US gal (l)	0.66 (2.5)	0.95 (3.6)	2.90(11)	4.49(17)	4.49(17)	4.49(17)
Operating Hours	3.3	3.0	8.3	8.5	5.8	5.2
AC Output	120V	120V	120V	120/240V	120/240V	120/240V
Rated Output	1600W	2400W	2400W	3600W	4500W	5700W
Rated Amps	13.3A	20A	20A	30/15A	37.5/18.8A	47.5/23.8A
DC Output	N/A	N/A	12V	12V	12V	12V
Dimensions (mm)	555x395x390	545x415x405	545x425x420	645x500x500	665x515x505	680x515x505
Dimensions (inches)	21.8X15.6X15.3	21.5X16.3X15.9	21.5X16.7X16.5	25.4x19.7x19.7	26.2x20.3x19.9	26.8x20.3x19.9
Dry Weight lbs. (kg)	65 (30)	76 (35)	93(43)	148(68)	163(75)/174(80)	176(81)/186(86)

* subject to change without notification

Safety Precaution

CAREFUL OPERATION IS YOUR BEST INSURANCE AGAINST ACCIDENT!

Read carefully and understand this section before operating your generator. All operators, no matter how much experience they have had, should read this and other manuals included with your machine. It is the owner's obligation to instruct all operators in safe operation.



WARNING

Indicates a possibility of personal injury or equipment damage if instructions are not followed.

NOTICE

Indicates that equipment or property damage can result if instructions are not followed.

CAUTION:

Indicates that equipment or property damage can result if instructions are not followed.



WARNING

1. Read this manual and the Honda Engine Owner's manual carefully before using your new generator - **KNOW YOUR EQUIPMENT!!!**
2. **DO NOT** operate generator in the rain or with wet hands.
If you ignore this condition, you may suffer severe electric shock.
3. **REFUELING**
 - a. **DO NOT** refuel the generator while it is in operation or still hot.
 - b. **DO NOT** refuel while smoking or near flames, pilot lights, sparking electrical devices, etc. (e.g. power tools, welders, or grinders) Unit should be refueled in a well lighted, & well ventilated area.
 - c. Avoid spillage.
 - d. **DO NOT** operate this generator with any other fuel except gasoline.
4. **DO NOT** operate generator near inflammable products.
5. **DO NOT** operate in areas with poor ventilation where vapors may be trapped.(i.e. inside a room or tunnel)
Engine exhaust gases are dangerous - the exhaust fumes contain carbon monoxide, a poisonous, tasteless, odorless, and invisible gas. The exhaust gases will endanger lives.
6. **DO NOT** connect the unit to a commercial power line.
7. **DO NOT** operate any generators with missing or broken parts.
Contact your dealer for replacement parts.
8. A ground should be used in damp or highly conductive locations.
9. **DO NOT** operate with extensions, power cords or any other electrical equipment, which is damaged or defective. Never operate any electrical equipment with damaged or defective cords.

Safety Precaution

NOTICE

1. Fill Engine with oil. Refer to the Honda Engine Owner's Manual for oil recommendations.
2. This Honda engine has an OIL ALERT system to protect the engine against low oil level. If the engine oil level is low the engine will not start.
3. Do not cover the unit while in operation. It could cause overheating and result in equipment damage.
4. For storage, do not cover unit until the engine has cooled completely.
5. Ambient temperature should not exceed 100°F/40°C.

CAUTION:

1. Operate your unit only on a firm supporting, level surface.
2. Sophisticated electronics (ie computers, phone systems...etc) should not be connected to this type of generator.

Before Starting Engine

- ▶ Read and understand the Honda Engine Owner's Manual
- ▶ **Check and fill engine with the recommended engine oil to the proper level.**
- ▶ Change oil if it becomes dirty or discolored. (Diagram 1) Oil capacity at upper level mark on the oil dipstick: see Honda engine owner's manual for more information.
- ▶ Remove the tank cap and check the fuel level. If fuel level is low, refill with unleaded automotive gasoline.

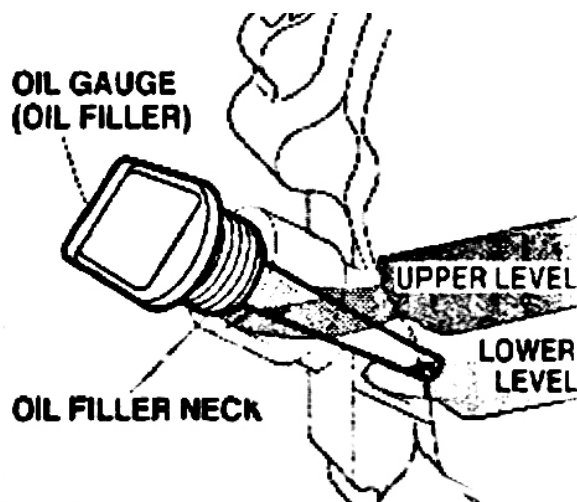


Diagram 1: Inspecting oil capacity.

Operation

▶ Starting the engine:

1. Read Honda Engine Owner's Manual.
2. Open fuel cock.
3. Set choke lever towards the "close" position when engine is cold.
If engine is warm, choke lever should be moved to the "Open" position.
4. Set the engine switch to the "run" position.
5. Pull on starter rope with a fast steady pull to start the engine. (Diagram 2)
6. After engine has started, move the choke lever back gradually to the "Open" position.
7. Once the engine is running at normal speed, useable AC power is available.

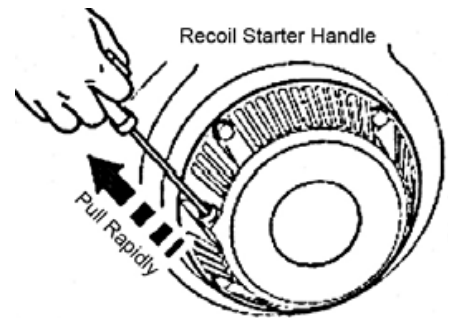


Diagram 2: Starting the engine.

▶ Applying AC load (single voltage type) (Refer to Diagrams 3, 4, 5.):

1. Place generator's "no fuse breaker" switch in the "0" position.
2. Start engine (Please refer to the Honda Engine Owner's Manual.)
3. Allow the engine to warm up for 2 - 3 minutes before connecting tools or appliances.
4. Insert the plug of the electrical appliance into the "AC receptacle".
5. Place generator's "no fuse breaker switch" in the "1" position.
6. Reset the GFCI receptacle.

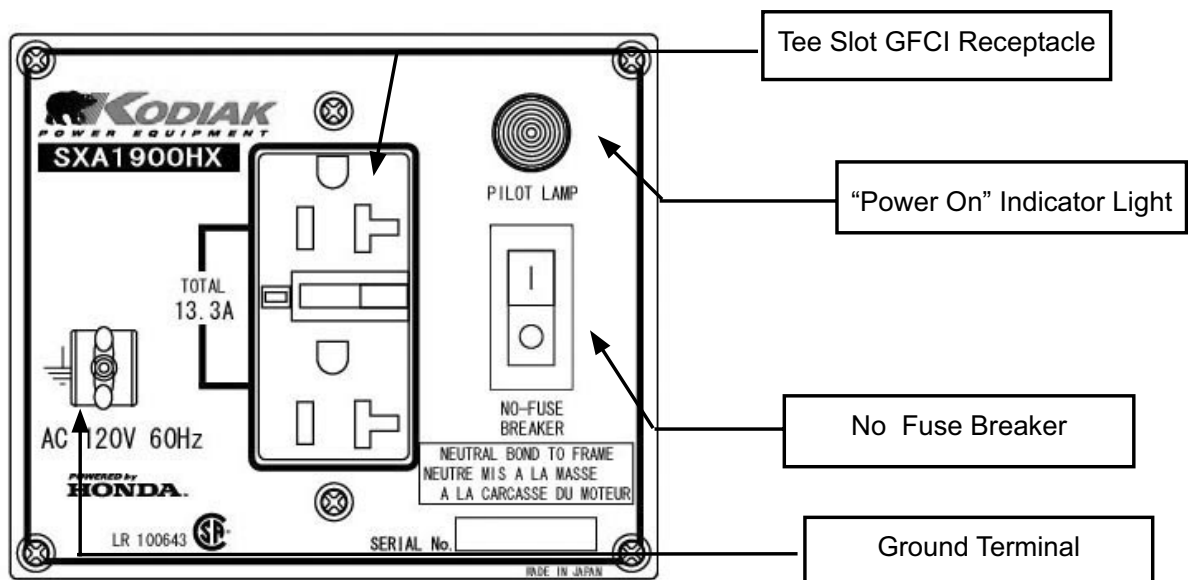
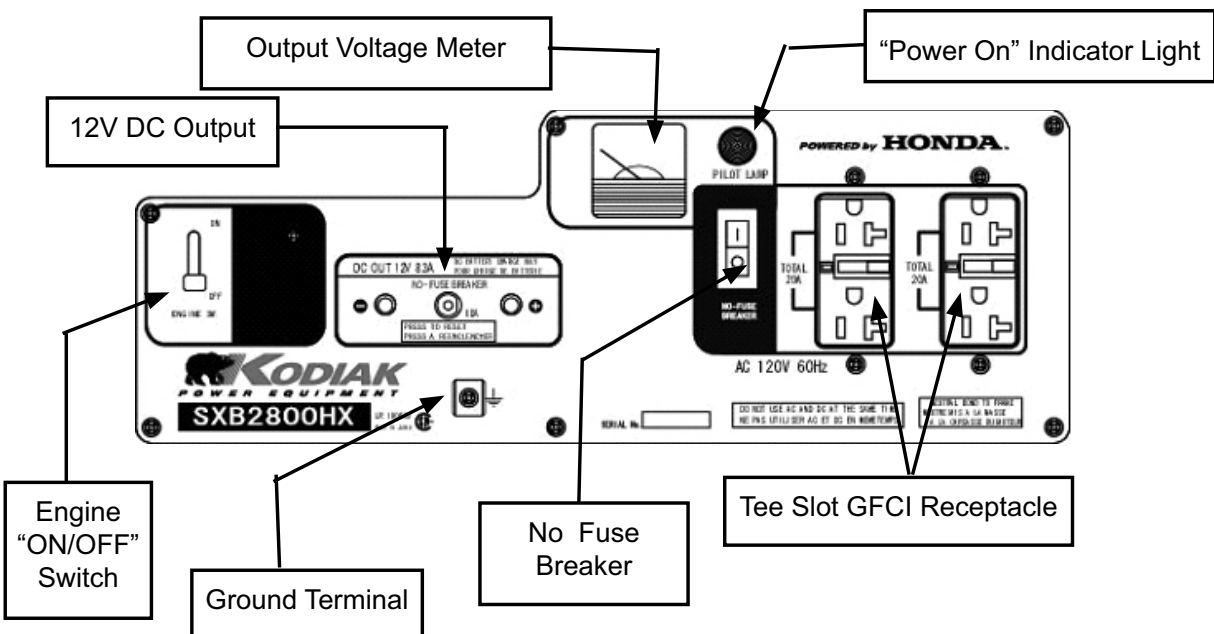
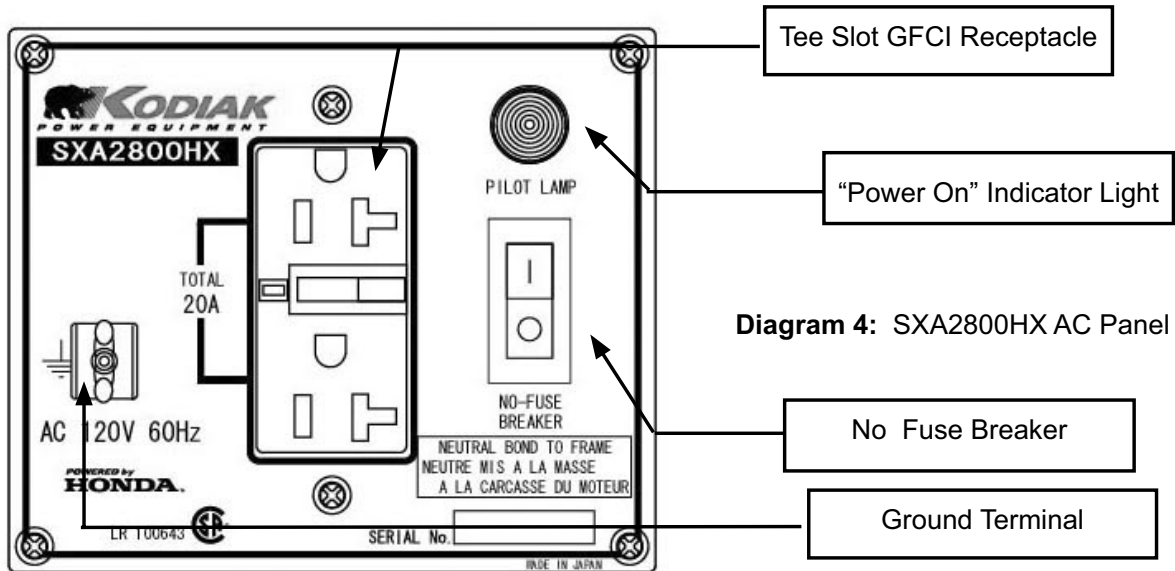


Diagram 3: SXA1900HX AC Panel

Operation

▶ Applying AC load (single voltage type) coninued:



WARNING

Be sure to ground the generator if the connected electrical equipment is grounded.

CAUTION: When the generator is overloaded or a short circuit is made, the 'no-fuse breaker' switch will stop the engine to protect the circuit automatically. If the "no-fuse breaker" switch trips during operation, the generator is either over loaded or the appliance is defective. Check the appliance and/or generator for overloading or defect, make necessary corrections or repairs before use.

Operation

▶ Dual voltage type (SXB4000HX, SXB5500HX(S), SXB7000HX(S) only)

1. Select the voltage using the "select" switch in accordance with the electrical appliance. Refer to table below.

SWITCH	LOWER VOLTAGE RECEPTACLE	HIGHER VOLTAGE RECEPTACLE
110V or 120V	RATED OUTPUT IS AVAILABLE	UNAVAILABLE
110V/220V or 120V/240V	HALF OF RATED OUTPUT IS AVAILABLE	RATED OUTPUT IS AVAILABLE

2. Place generator's "no fuse breaker" switch in the "0" position.
3. Start engine (Please refer to the Honda Engine Owner's Manual.)
4. Allow the engine to warm up for 2 - 3 minutes before connecting tools or appliances.
5. Insert the plug of the electrical appliance into the "AC receptacle".
6. Place generator's "no fuse breaker switch" in the "1" position.
7. Reset the GFCI receptacle.

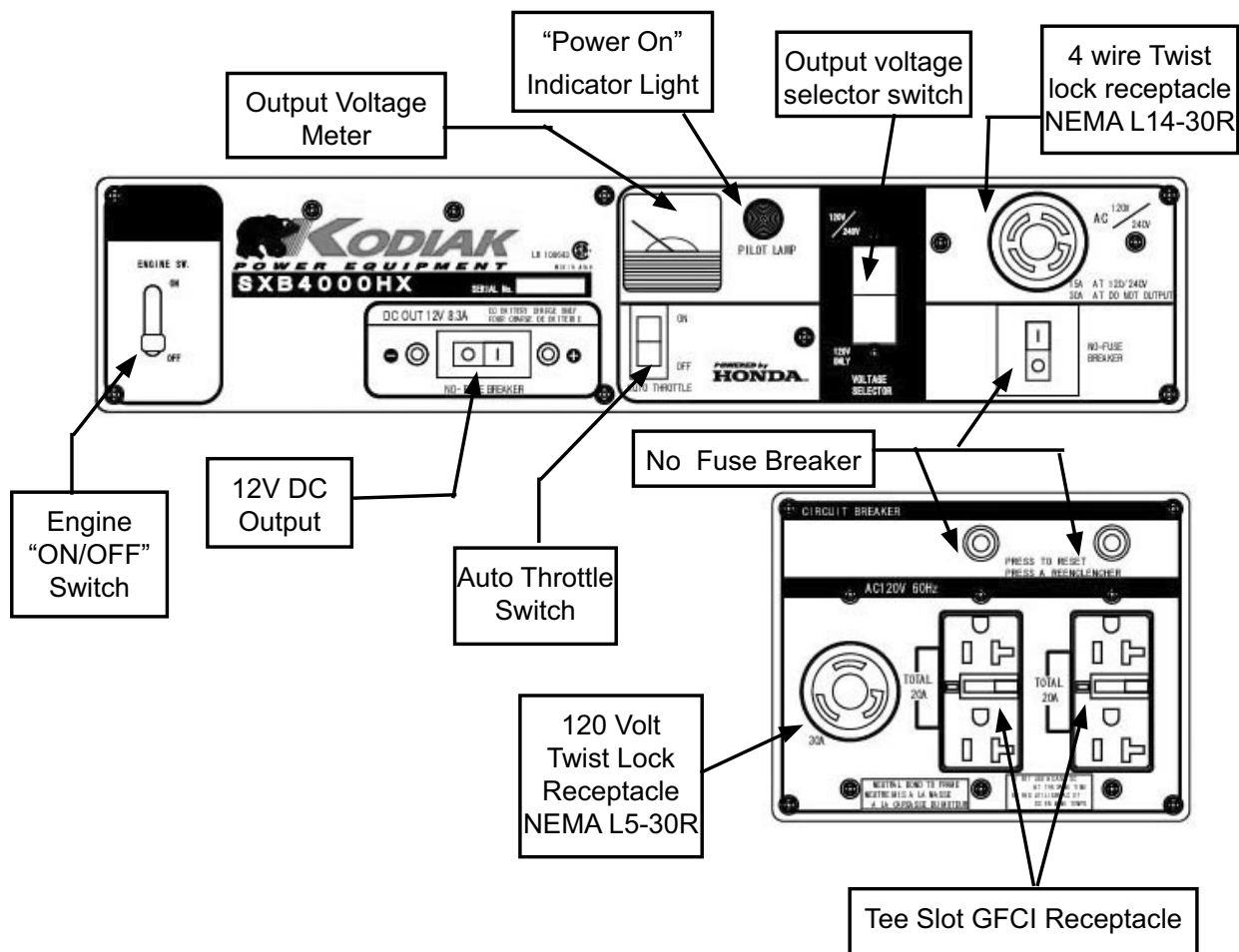


Diagram 6: SXB4000HX Control Panel

Operation

▶ **Dual voltage type (SXB4000HX, SXB5500HX(S), SXB7000HX(S) only) continued:**

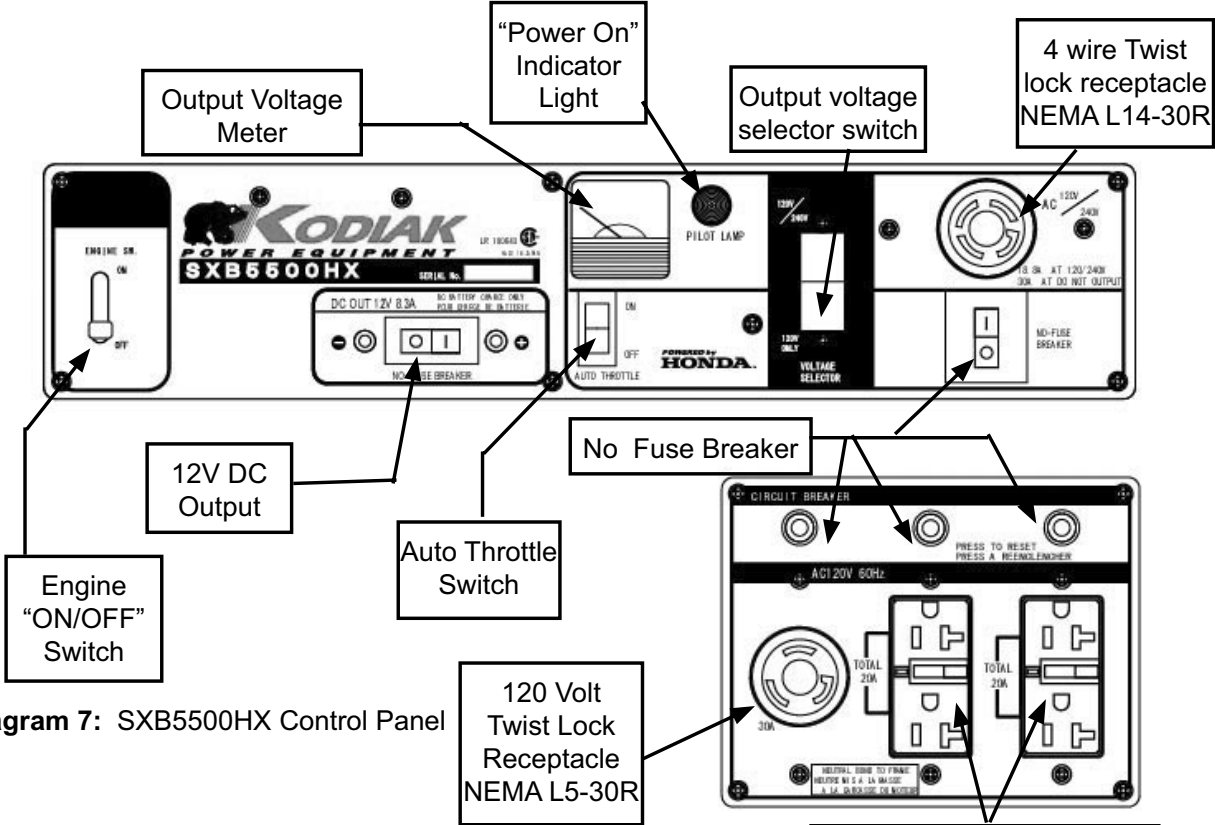


Diagram 7: SXB5500HX Control Panel

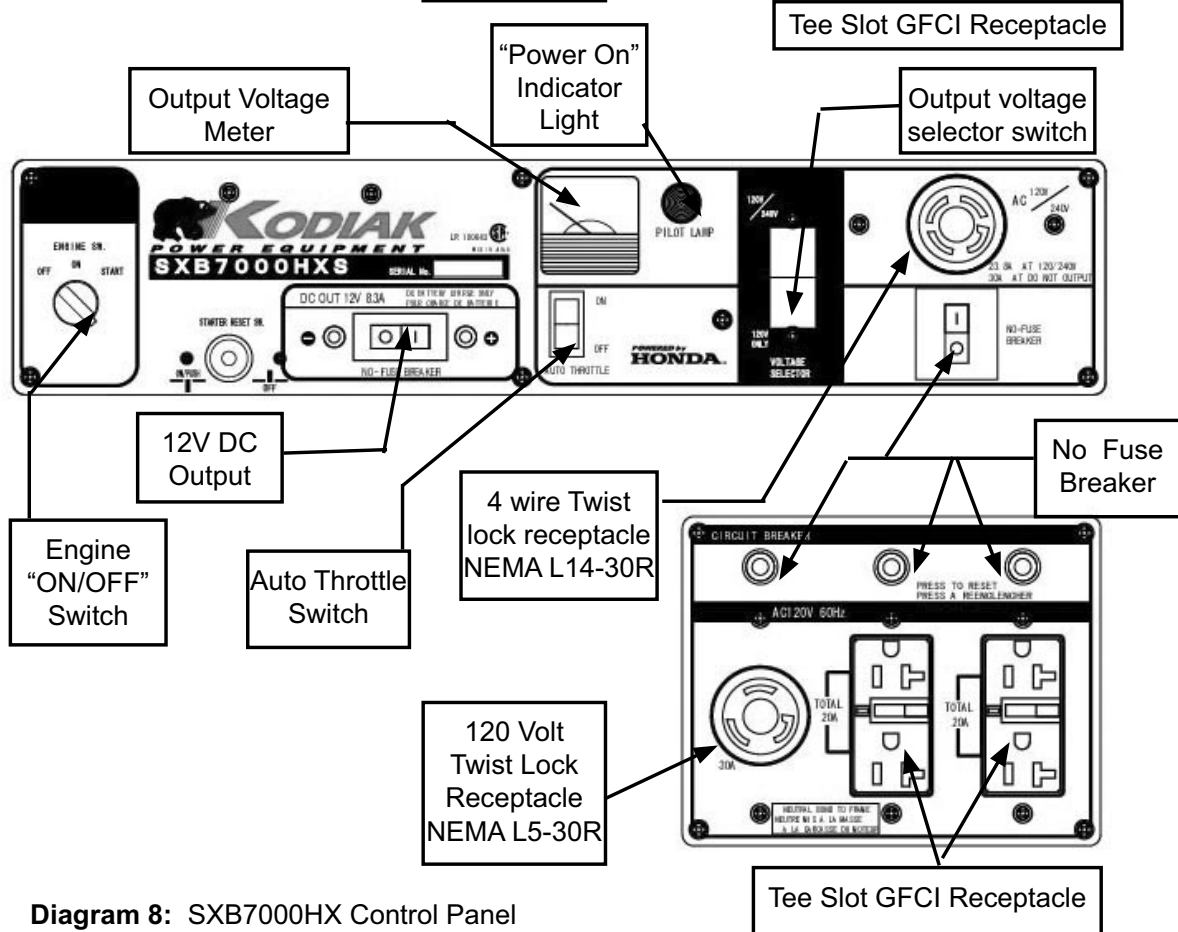


Diagram 8: SXB7000HX Control Panel

Operation

▶ **Battery charger (SXB2800HX, SXB4000HX, SXB5500HX(S), SXB7000HX(S) only)**

The DC terminal is used only for charging 12 volt batteries. It provides up to 12V-8.3A(100W) of maximum power.

CAUTION: Be sure to make correct connection to the battery. The positive(+) battery terminal should be connected to the "red" terminal.



WARNING

Do not over-charge the battery. **Over-charging** of a battery can result in personal injury due to **explosion** of battery.

Stopping Operation

▶ **In an emergency:**

(Please refer to the Honda Owner's manual)

To stop the engine in an emergency, move the engine switch to the "off" position.

▶ **In normal use:**

1. Turn the "no-fuse" breaker to the "0" position.
2. Unplug all appliances.
3. Move the engine switch to the "off" position.
4. Turn the fuel valve to the "off" position.

NOTICE

Never leave an appliance plugged into the generator when you stop the generator, as damage could result to the generator and/or appliance.

Maintenance & Storage

▶ **Maintenance (Please refer to the Honda Engine Owners Manual):**

Periodic inspection and adjustment of the Honda engine are essential if a high level of performance is to be maintained. Regular maintenance will also ensure a long service life. The required service intervals and kind of maintenance to be performed are described in the Honda Engine Owner's Manual. Please refer to the Honda Engine Owner's Manual for more details.

▶ **Transportation/Storage (Please refer to the Honda Engine Owners Manual):**

When transporting the generator, turn the fuel cock OFF and keep the unit level to prevent fuel spillage.

When the generator is in storage for a long period, carry out the following maintenance. Please refer to the Honda Owner's manual.

1. Store generator in a well-ventilated, low humidity area.
2. Clean each part with an oil permeated rag.
3. Change the engine oil.
4. Clean the air cleaner.
5. Empty the gasoline from fuel tank.
6. Start and run engine until it runs out of fuel.



WARNING

Never use water to clean the generator

Wattage Information

Some appliances need a “surge” or “in rush” of power at start up. This means that the amount of electrical power needed to start the appliance may exceed the amount needed to maintain its use. Refer to the appliance for its maximum starting power.

Electrical appliances and tools normally come with a label indicating voltage, cycles (HZ), amperage and electrical power needed to run the appliance or tool. If the appliance does not have this information in watts - but does have it in voltage & amperage - simply multiply them together to get the power in watts.

(Power in watts = voltage x amperage)

Troubleshooting

The majority of troubles with generator units are with the engine. Please refer to the Honda Engine manual if engine troubles arise. If problem persists please contact your local Honda dealer.

▶ Engine:

Symptom	CAUSE	REMEDY
Engine fails to start	Fuel level is low	Refill fuel tank making sure not to overfill
	Oil Level is low	Fill oil to proper level
	Fuel strainer cock closed	Open fuel strainer cock
	Choke lever is not in the proper position	Place chose lever “close”
	Spark plug loose or dirty	1. If loose, push spark plug cap back into place 2. Remove spark plug and clean electrodes
	Others	See Honda owner’s manual or contact your local Honda Dealer for assistance

▶ Generators:

Symptom	CAUSE	REMEDY
No Power	No-fuse breaker is “0” position	After making sure that the total wattage of the electrical appliance is with in permissible limits and there are no defects in the appliance, turn the no-fuse breaker to the “1” position
	The GFCI receptacle has tripped or has not been set	Press the reset button in the GFCI receptacle
Voltage is too low	Engine speed is too low	Contact your local Kodiak dealer for assistance

Troubleshooting

If problem persists please call the Kodiak toll free hot-line below for the service center nearest you.

Customer Service Hotline:

1-800-461-1323

Visit our website:

www.kodiakpower.ca

GENERATOR

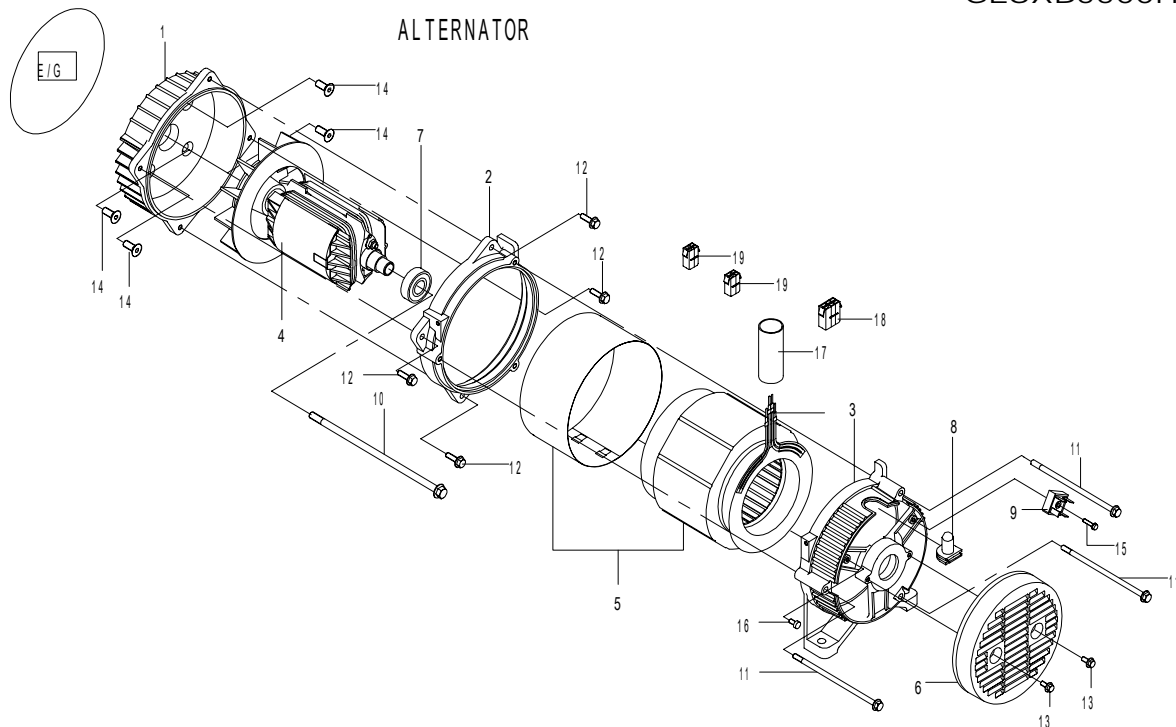
PARTS CATALOG

MODEL : GESXB5500HX(S) (CSA)

4500VA 120/240V 60Hz

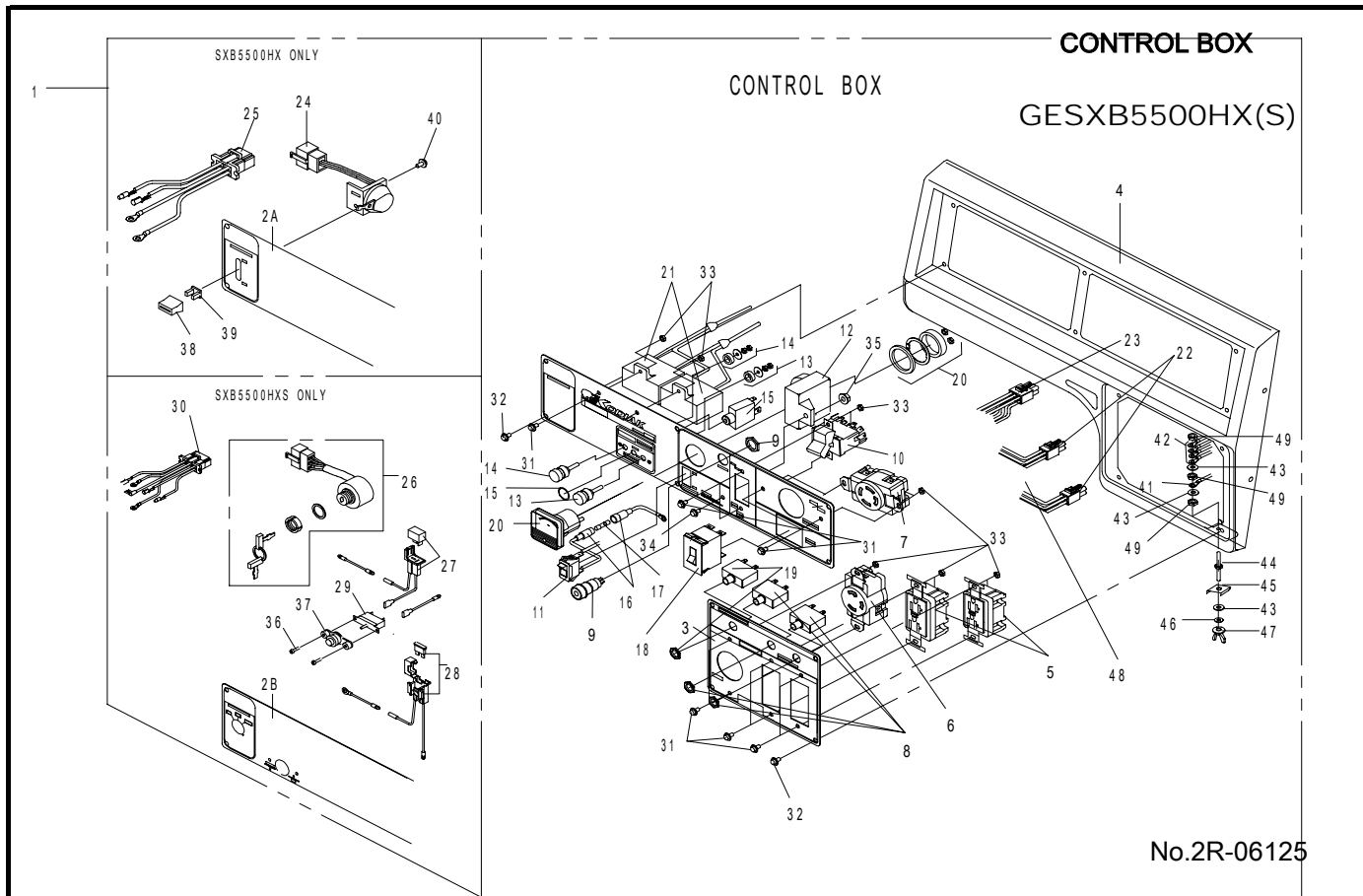
ALTERNATOR

GESXB5500HX(S)



No.2R-06125

REF No.	Parts No.	Parts name	Q'ty	Price	Remarks
1	GESG15411460000	BRACKET (1)	1		
2	GESG15311462000	N-BRACKET	1		
3	GESG15311461000	BRACKET (2)	1		
4	GESG15200347000	ROTOR ASSY	1		L#20212122
5	GESG15250222000	STATOR ASSY	1		L#20212119
6	GESG1531E471000	COVER,BRACKET	1		
7	GESG6205ZZ-CM-NS7	BALL BEARING	1		
8	GESGK4403005	RUBBER BUSH	1		
9	GESG15111473000	BRIDGE DIODE	1		
10	GESGK3403011	HEX,BOLT W/FLANGE(M10×1.25-250)	1		
11	GESGK3403015	HEX,BOLT W/FLANGE(M6×1.0-165)	4		
12	GESG19B30908020	HEX,BOLT W/FLANGE(M8×1.0-20)	4		
13	GESG19B30905012	HEX,BOLT W/FLANGE(M5×0.8-12)	2		
14	GESG19B50908020	FLAT HEAD BOLT W/SOCKET (M8×1.25-20)	4		
15	GESG19S00904018	CROSS RECESSED HEAD SCREW(M4-18)	1		
16	GESG19S00905007	CROSS RECESSED HEAD SCREW(M5-7)	1		
17	GESG15350107000	TUBE,LEAD WIRE(L=240)	1		
18	GESG15350101000	CONNECTOR 4P □	2		
19	GESG15350307000	CONNECTOR 6P □	1		



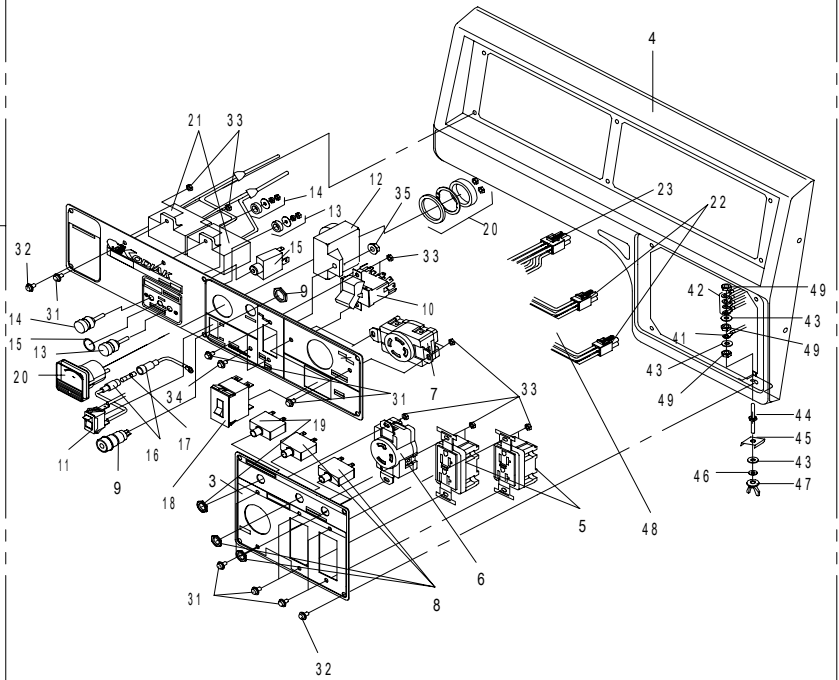
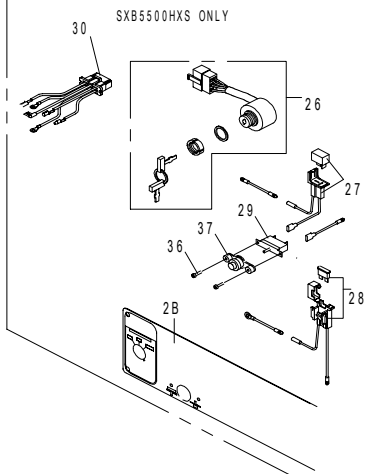
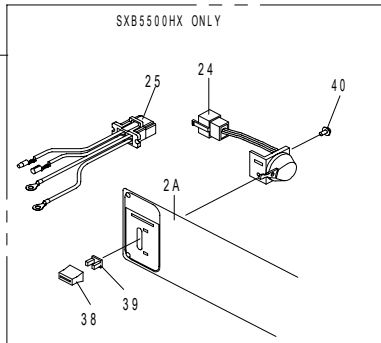
No.2R-06125

REF No.	Parts No.	Parts name	Q'ty	Price	Remarks
1		CONTROL BOX ASSY	1		
2A	GESG15450758000	PANEL	1		
2B	GESG15450759000	PANEL	1		
3	GESG15450768000	PANEL	1		
4	GESG15300837000	CONTROL PANEL	1		
5	GESG15400104000	RECEPTACLE 20A, GFCI	2		
6	GESG15400105000	RECEPTACLE 30A, 3P	1		
7	GESG15400106000	RECEPTACLE 30A, 4P	1		
8	GESG15400144000	NO-FUSE BREAKER (250V,20A)	2		
9	GESG85111573300	NEON BRACKET	1		
10	GESG15400143000	SWITCH,VOLTAGE SELECTOR	1		
11	GESG15400108000	SWITCH,AUTO THROTTLE	1		
12	GESG19600700660	CONTROL UNIT,AUTO THROTTLE	1		
13	GESG15111584000	D.C TERMINAL RED(+)	1		
14	GESG15111583000	D.C TERMINAL BLACK(-)	1		
15	GESG15400141000	NO-FUSE BREAKER DC 10A	1		
16	GESG85321072000	LEAD WIRE ASSY,AUTO THROTTLE	1		
17	GESG15111585020	FUSE 1A	1		
18	GESG15400142000	TWIN NO-FUSE BREAKER (250V,20A)	1		
19	GESG15450145000	NO-FUSE BREAKER (250V,30A)	1		
20	GESG15400109000	VOLTMETER,FS:300V	1		
21	GESG89700581050	CONDENSOR ASSY,1 8 μ F	2		
22	GESG15350101000	CONNECTOR 4P □	2		
23	GESG15350307000	CONNECTOR 6P □	1		
24	GESG36110-ZB4-701	SWITCH ASSY,ENGINE STOP	1		HONDA PART
25	GESG15500981000	LEAD WIRE ASSY,ENGINE SWITCH	1		
26	GESG35100-ZB4-013	KEY SWITCH ASSY,COMBINATION	1		HONDA PART
27	GESG32130-ZE1-000	COUPLER COMP,SILICON RECTIFIER	1		HONDA PART

CONTROL BOX

GESXB5500HX(S)

CONTROL BOX

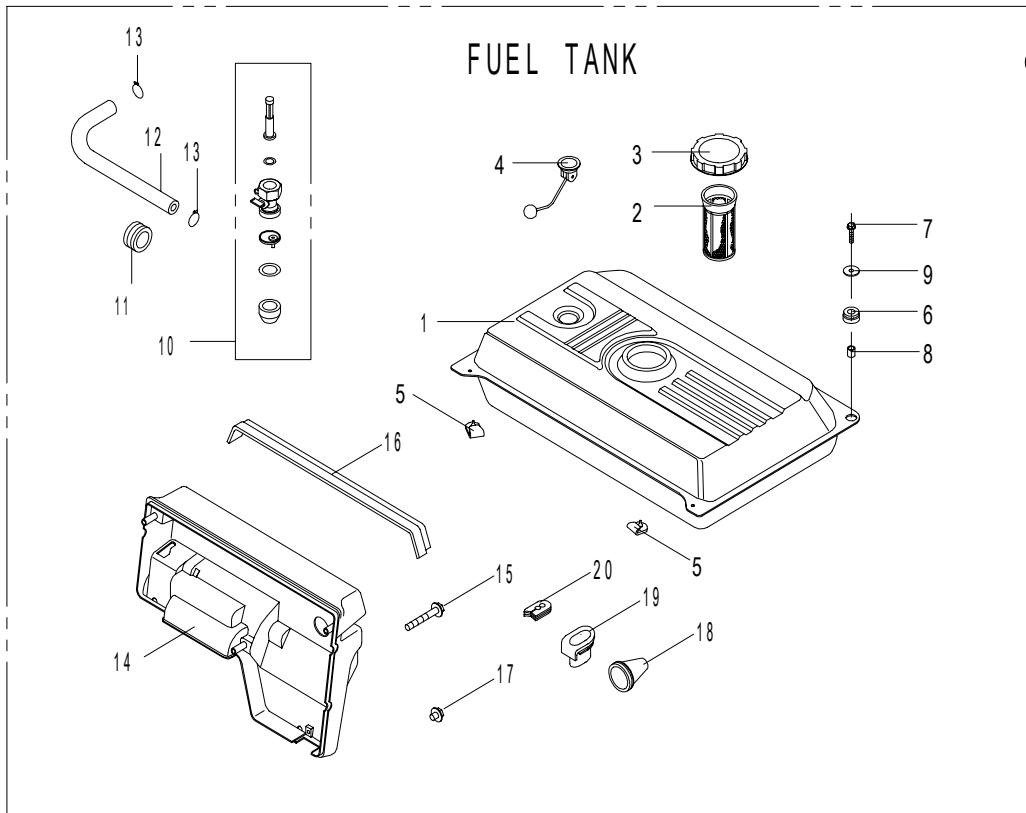


No.2R-06125

REF No.	Parts No.	Parts name	Q'ty	Price	Remarks
28	GESG38220-ZE1-000	CASE COMP, FUSE	1		HONDA PART
29		CIRCUIT PROTECTOR (1A, 125V)	1		HONDA PART
30	GESG15500982000	LEAD WIRE ASSY, COMBINATION SWITCH	1		
31	GESG19S00904012	CROSS RECESSED HEAD SCREW (M4-12)	12		
32	GESG19S00905010	CROSS RECESSED HEAD SCREW (M5-10)	10		
33	GESG19N10904000	HEX, NUT W/FLANGE M4	12		
34	GESG19SF4906015	CROSS RECESSED HEAD SCRED (M6-15)	1		
35	GESG19N10906000	HEX, NUT W/FLANGE M6	1		
36	GESG19S00903012	CROSS RECESSED HEAD SCREW (M3-12)	2		
37		LENS ASSY, PROTECTOR	1		HONDA PART
38	GESG32343-892-003	KNOB, CONTROL LEVER	1		HONDA PART
39	GESG36106-892-003	BUSH, CONTROL KNOB	1		HONDA PART
40	GESG19S00904006	CROSS RECESSED HEAD SCRED (M4-6)	1		
41	GESG15500958000	EARTH WIRE 1	1		
42		EARTH WIRE 2	1		
43		FLAT WASHER (5)	3		
44	GESG15550168000	STUD BOLT (M5)	1		
45	GESG15301034000	CAP WASHER	1		
46		LOCK WASHER (5)	1		
47	GESG19N60905000	WING NUT (M5)	1		
48		LEAD WIRE	1		
49	GESG19N10905000	HEX, NUT W/FLANGE (M5)	3		

FUEL TANK

GESXB5500HX (S)

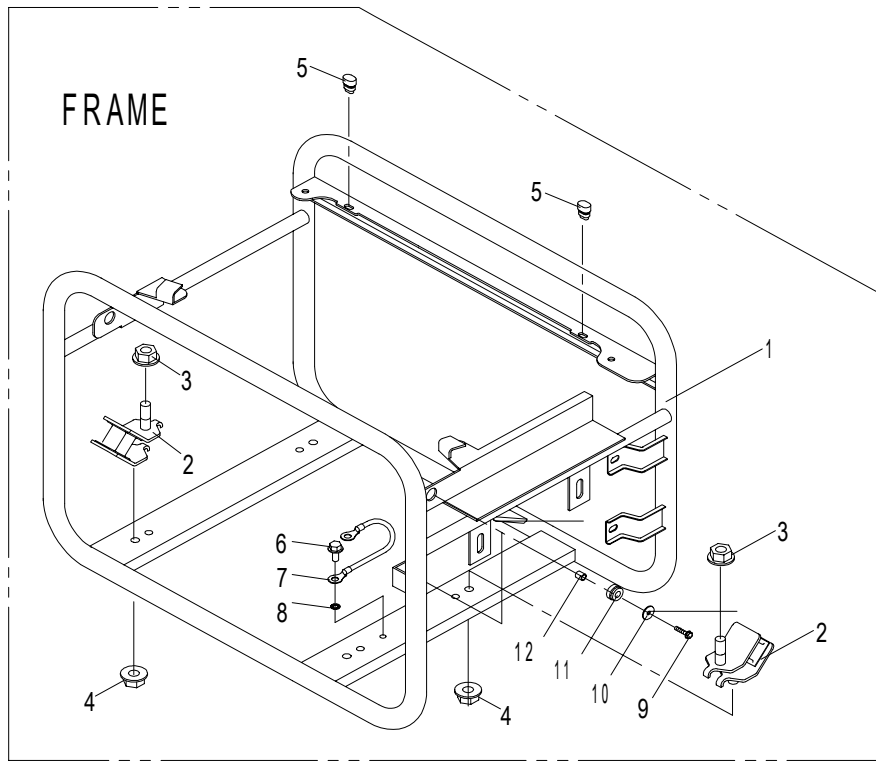


No.2R-06125

REF No.	Parts No.	Parts name	Q'ty	Price	Remarks
1	GESG15300838000	FUEL TANK	1		
2	GESG15321771100	FILTER COMP., FUEL	1		
3	GESG15321771000	CAP COMP., FUEL FILLER	1		
4	GESG15321278000	GAUGE ASSY., FUEL	1		
5	GESG15221880110	RUBBER,TANK MOUNTING	2		
6	GESG15321880100	RUBBER,TANK CUSHION	2		
7	GESG19B30906022	HEX,BOLT W/FLANGE (M6x1.0-22)	2		
8	GESG15321670270	COLLAR,TANK CUSHION	2		
9	GESG19W00906025	WASHER,TANK CUSHION (6x25,1.0t)	2		
10	GESG16950-ZB4-0150	COCK COMP, FUEL	1		HONDA PART
11	GESG90854-ZB2-0000	RUBBER,FUEL TUBE	1		HONDA PART
12	GESG95001-45150-40	TUBE,FUEL	1		HONDA PART
13	GESG95002-02080	CRIP B8,TUBE	2		HONDA PART
14	GESG15350202000	CASE,CONTROL	1		
15	GESG19B30906040	HEX,BOLT W/FLANGE (M6x1.0-40)	3		
16	GESG15321880150	RUBBER,CONTROL CASE	1		
17	GESG90101-692-000	SCREW GROVE BOX	1		HONDA PART
18	GESG15321880130	GROMMET PANEL LEAD #2	1		
19	GESG15321880160	GROMMET SWITCH CODE	1		
20	GESG15321880140	GROMMET TUBE	1		

FRAME

GESXB5500HX (S)



No.2R-06125

REF No.	Parts No.	Parts name	Q'ty	Price	Remarks
1	GESG15321670001	FRAME	1		
2	GESG19500691010	ANTI-VIBRATION RUBBER	4		
3	GESG19N15910000	HEX, NUT W/FLANGE (M10×1.25)	4		
4	GESG19N10908000	HEX, NUT W/FLANGE (M8×1.25)	4		
5	GESG15321880120	STOPPER, DISCHARGE GURD	2		
6	GESG19B30906012	HEX, BOLT W/FLANGE (M6×1.0-12)	1		
7	GESG15500377000	BONDING WIRE	1		
8	GESG19W50906000	TOOTH LOCK WASHER (6)	1		
9	GESG19B30906020	HEX, BOLT W/FLANGE (M6×1.0-20)	3		
10	GESG19W00906020	WASHER, PANEL CUSHION (6×20, 1.0t)	3		
11	GESG15221880100	RUBBER, PANEL CUSHION	3		
12	GESG15221670270	COLLAR, PANEL CUSHION	3		