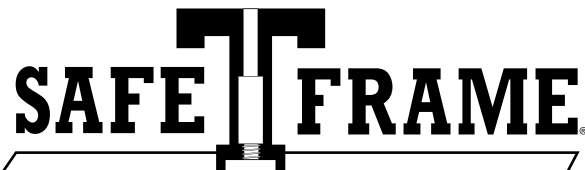


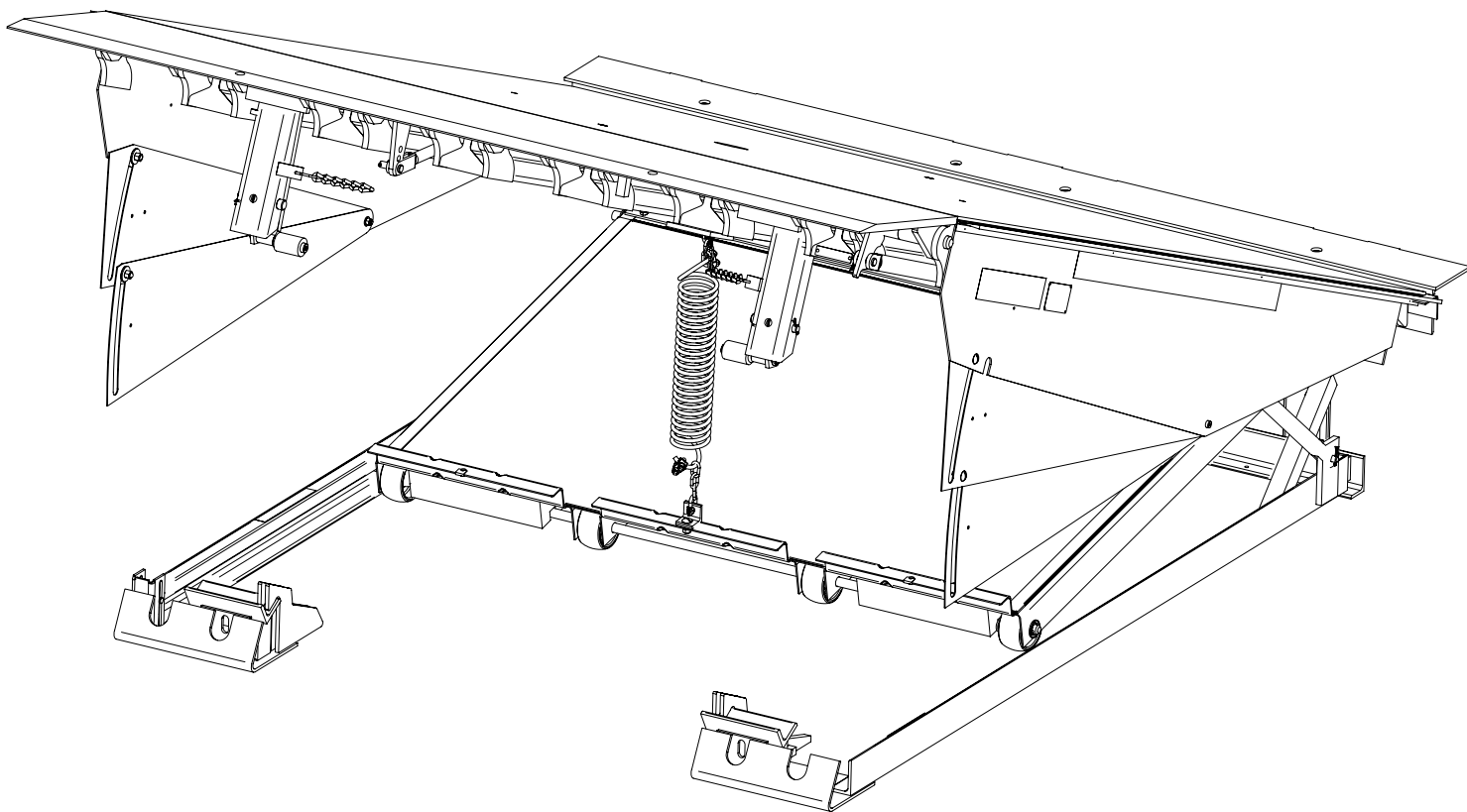


KELLEY[®]

aFX[®]/aFX-S Dock Leveler



SAFE | FRAME[®]



aFX[®]
AIR SUPERIORITY. ONLY FROM KELLEY.

This User's Manual applies to aFX dock levelers manufactured beginning September 2012 with the serial numbers 61056056 and higher.

▲ WARNING

Do not install, operate or service this product unless you have read and understand the Safety Practices, Warnings, Installation and Operating Instructions contained in this User's Manual. Failure to do so could result in death or serious injury.

User's Manual

Installation, Operations,
Maintenance and Parts

Part No. 6004751K

WIRING DIAGRAM

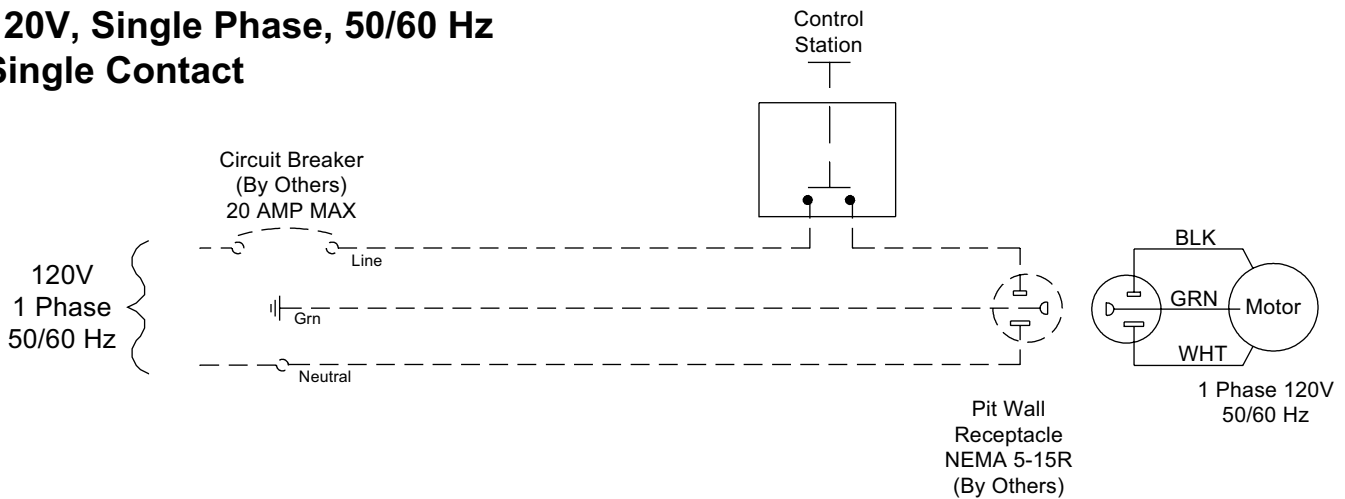
▲ DANGER

Before doing any electrical work, make certain the power is disconnected and properly tagged or locked off. All electrical work must be done by a qualified technician and meet all applicable codes. If it is necessary to make troubleshooting checks inside the control box with the power on, USE EXTREME CAUTION. Do not place your fingers or non insulated tools inside the control box. Touching wires or other parts inside the control box could result in electrical shock, death or serious injury.

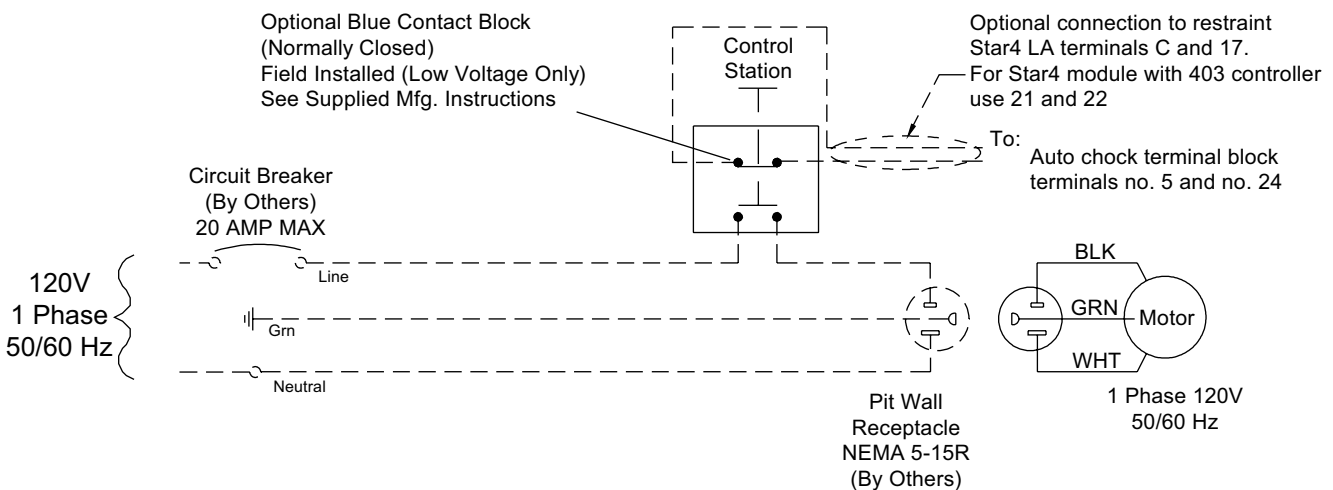
Never allow more than 130 volts to be connected to the 120 volt motor circuit. Damage to motor, push-button, air bag, and serious personal injury or death may result.

Fig. 23

120V, Single Phase, 50/60 Hz Single Contact



120V, Single Phase, 50/60 Hz Optional Dual Contact



SERVICE TOOLS

⚠ WARNING

Before servicing the dock leveler, read and follow the Safety Practices on page 3, and the Operations Instruction section on pages 16 through 18 of this User's Manual.

⚠ DANGER

Be certain, before climbing into the dock leveler pit or doing any maintenance or repair under the dock leveler, that: 1) THE MAINTENANCE STRUT AND LIP LOCK ARE SECURELY PINNED IN PLACE [see Fig. 31 and text below] and 2) The power is disconnected and properly tagged or locked off.

Air pressure or mechanical support must be maintained on the ramp to hold it in the raised position until the maintenance strut is in place. DO NOT WORK UNDER THE DOCK LEVELER RAMP OR LIP UNLESS THE MAINTENANCE STRUT AND LIP LOCK ARE PINNED IN PLACE.

MAINTENANCE STRUT

- Two people are needed to place the dock leveler on the maintenance strut.
 - One person must push and hold the raise button until dock leveler reaches its highest position and hold dock leveler in its highest position.
 - The second person positions the maintenance strut into the bracket located on the underside of the ramp assembly and pins it in place with hairpin clip. See Fig. 31 and the instruction label on maintenance strut.
 - The raise button may now be released.

LIP LOCK

⚠ DANGER

Manual support of lip must be maintained until the lip lock is in place. The lip is free to move downward when it is released unless lip lock is pinned in place.

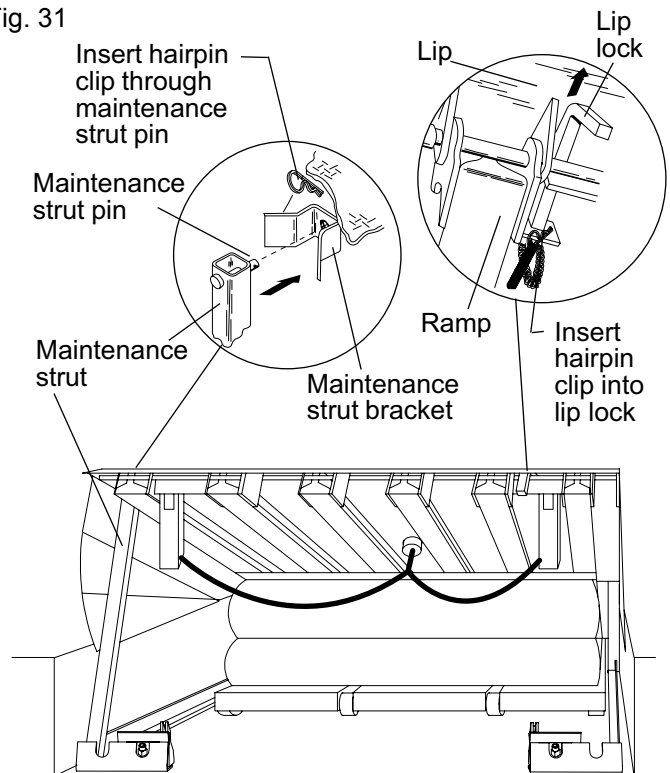
DO NOT WORK UNDER THE DOCK LEVELER RAMP OR LIP UNLESS THE MAINTENANCE STRUT AND LIP LOCK ARE PINNED IN PLACE.

- Manually lift the hinged lip into the raised position and lock into place with the lip lock provided on the dock leveler ramp. Pin lip lock in place with hairpin clip. See Fig. 31 and instruction label located on the underside of the dock leveler ramp.

NOTE:

To store the maintenance strut follow all instructions on page 12.

Fig. 31



CLEAN PIT KIT

The clean pit kit is used to raise the front end of the bag support pan assembly. This allows for easy access to the pit for cleaning of the pit area.

▲ DANGER

Be certain, before climbing into the dock leveler pit or doing any maintenance or repair under the dock leveler, that: 1) THE MAINTENANCE STRUT AND LIP LOCK ARE SECURELY PINNED IN PLACE [see page 22] and 2) The power is disconnected and properly tagged or locked off.

The clean pit kit as shown will automatically raise the bag support pan assembly when the dock leveler it rested on the maintenance post. Reference the chart on page 34 for the upper shackle location on the chain to determine the proper link for connecting the kit to the ring on the deck.

During normal operation, the spring extends as the bag inflates. See Fig. 32

When pinned on the maintenance strut, the spring will raise the bag support pan assembly as the bag deflates. Once the bag pan support assembly stops moving, there is then easy access for cleaning the pit or installing the bag removal tools for removing the bag. See Fig. 33

Fig. 32

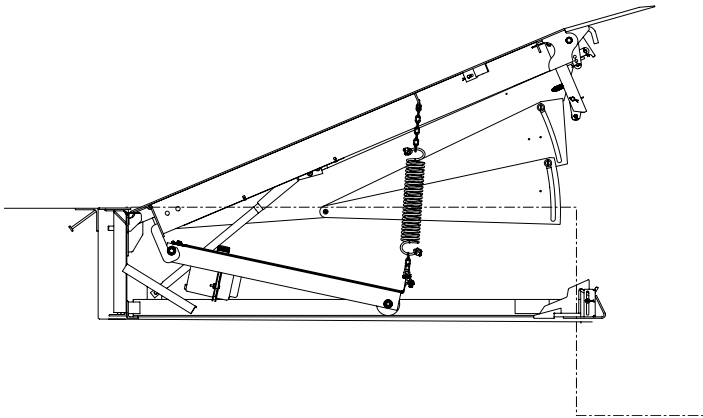
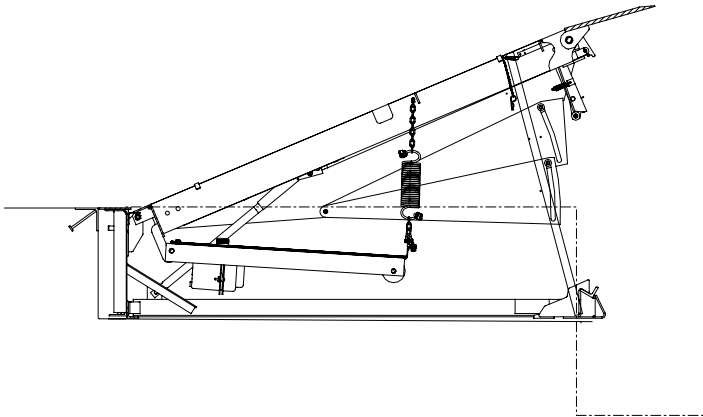


Fig. 33



SERVICE TOOLS, continued

PAN REMOVAL ROLLERS

The pan removal rollers are used to remove the bag support pan assembly. This allows for easy access to service the lifting fan and bag assembly.

▲ DANGER

Be certain, before climbing into the dock leveler pit or doing any maintenance or repair under the dock leveler, that: 1) THE MAINTENANCE STRUT AND LIP LOCK ARE SECURELY PINNED IN PLACE [see page 22] and 2) The power is disconnected and properly tagged or locked off.

1. To remove bag support pan assembly:
 - 1.1 Allow the lifting spring to deflate the air bag and raise the bag support pan assembly.
 - 1.2 Attach pan rollers (kit part #184376 for 19" subframes and 6013799 for 23" subframes) to both sides of the pan assembly, either 16" or 19" back from the front edge as shown in Fig. 34.

NOTE:

For 8' long 50K capacity and 10' long dock levelers attach pan rollers 19" from front edge as shown in Fig. 34.

- 1.3 After installing the rollers, press down on the front of the bag assembly, extending the spring, to unhook the rear axle from the back of the leveler and pull forward.
- 1.4 Disconnect the bolt from the center pan and remove the lifting kit from the bag support pan assembly.
- 1.5 Balancing the bag support pan assembly on the rollers roll it to the front of the pit. The rollers will roll on the frame rails.

2. To install the bag pan assembly:

- 2.1 Roll the bag support pan assembly to the back of the pit and align it with the hooks on the back of the ramp.
- 2.2 Tilt the front of the assembly up and attach the support angle that is connected to the bottom of the lifting kit to the hole in the center pan.
- 2.3 Press the front of the bag down and hook the rear axle into the hooks on the back of the ramp.

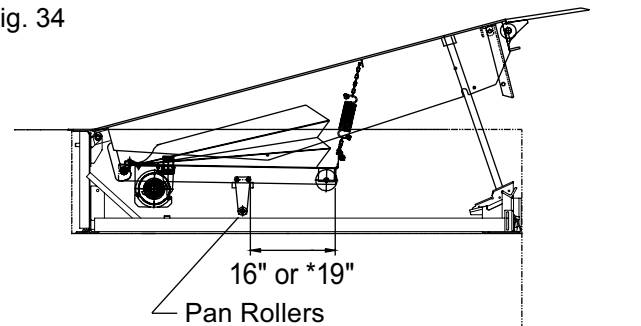
- 2.4 Allow the spring to raise the bag, then remove the pan rollers.

- 2.5 Re-connect the bolt from the lifting kit to the center pan.

NOTE:

See page 34 for clean pit kit parts list and installation instructions.

Fig. 34



NOTE:

For 8' long 50K capacity and 10' long dock levelers attach pan rollers 19" from front edge.

TROUBLESHOOTING

⚠ WARNING

Before troubleshooting the dock leveler, read and follow the Safety Practices on page 3 and the Operations Instruction section on pages 16 through 18 of this User's Manual.

⚠ DANGER

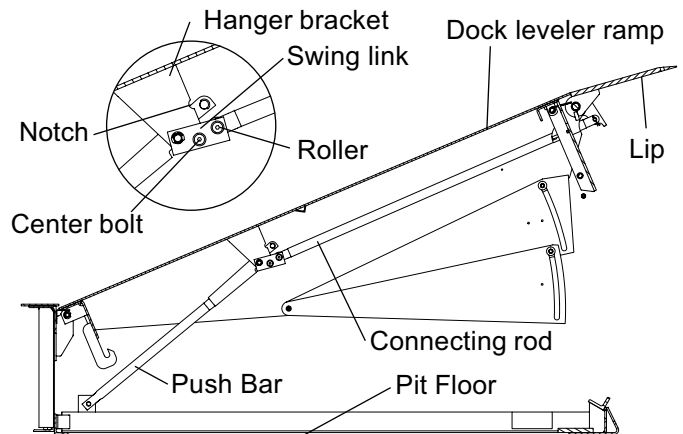
Be certain, before climbing into the dock leveler pit or doing any maintenance or repair under the dock leveler, that: 1) THE MAINTENANCE STRUT AND LIP LOCK ARE SECURELY PINNED IN PLACE [see page 22] and 2) The power is disconnected and properly tagged or locked off.

Before doing any electrical work, make certain the power is disconnected and properly tagged or locked off.

NOTE:

Follow Service Tools use instructions on pages 22 through 24.

Fig. 35

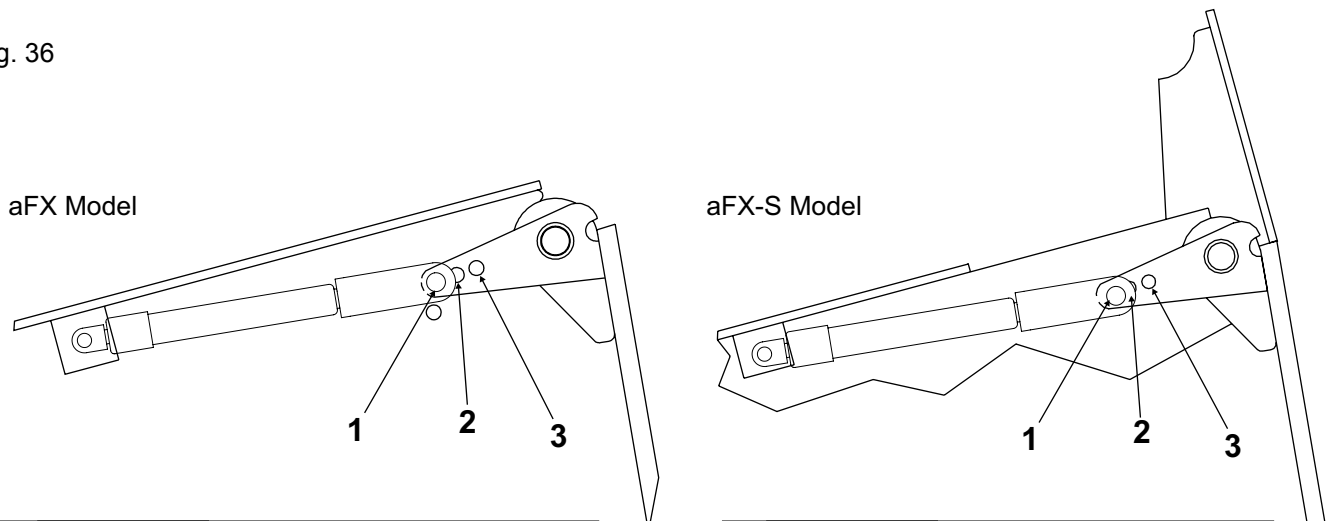


PROBLEM	POSSIBLE CAUSE	SOLUTION
1) Leveler does not raise. Motor fails to run.	<ul style="list-style-type: none"> a) Fuse blown or breaker tripped. b) No electrical power to push-button. c) Push-button is broken. d) Fan plug loose or unplugged in receptacle. e) Loose wires in control panel or junction box. f) Fan assembly damaged/broken. 	<ul style="list-style-type: none"> a) Replace fuse or reset breaker. b) Check all power supplies to control panel and make sure connections are tight. c) Replace push-button. d) Check and tighten connection to receptacle. e) Repair or replace wires. f) Replace fan assembly.
2) Leveler does not raise or does not raise completely. Motor runs.	<ul style="list-style-type: none"> a) Obstruction(s) preventing the leveler from raising. b) Holes or leaks in the lifting bag. c) Loose or misaligned bag fittings or loose bag clamps. d) Motor voltage too low. 	<ul style="list-style-type: none"> a) If an obstruction is found, turn off power before attempting to clear the obstruction. b) Order the patch kit from your dealer or Kelley® to repair holes. If holes are too large, replace bag assembly. c) Repair or replace as required. See parts list on page 38 and 39. d) Verify motor voltage is between 110-129 volts AC while motor is running at full load.

TROUBLESHOOTING, continued

PROBLEM	POSSIBLE CAUSE	SOLUTION
3) Lip fails to lower to the stored position when the dock leveler is raised from vehicle	a) Lip extension mechanism is bent or binding. b) Lip assist gas spring pin is in incorrect position.	a) Check to make sure that the lip extension mechanism is not bent or binding. Be sure all parts are lubricated properly. Lubricate as required. See Fig. 30. b) Make sure pin is in correct position and both pins are in good condition. See Fig. 36
4) Dock level support legs will not retract for below dock operation	a) Chain not connected b) Chain binding. c) Legs binding. d) Chain pulling one leg.	a) Check connection of dock level control chain to the dock level support legs. See Fig. 37. b) Check for binding of dock level control chain. c) Check for binding in dock level support legs. d) Check length of below dock control chain. Adjust chain so dock level support legs are retracted the same distance.
5) Air bag is not lifting when the ramp is on the maintenance post.	a) The link selected for attachment to the deck is incorrect.	a) Connect the lifting kit chain using a link closer to the spring. See chart on page 34.

Fig. 36

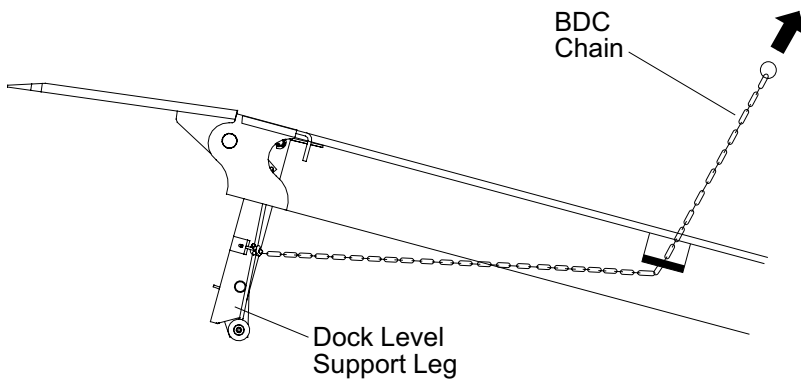


Lip Size	Lip Capacity		
	25K	30K & 35K	40K, 45K, & 50K
6'-16"	Hole 3	Hole 2	Hole 1
6'-18"	Hole 2	Hole 1	Hole 1
6'-20"	Hole 1	Hole 1	Hole 1
6-1/2'-16"	Hole 2	Hole 1	Hole 1
6-1/2'-18"	Hole 1	Hole 1	Hole 1
6-1/2'-20"	Hole 1	Hole 1	Hole 1
7'-16"	Hole 2	Hole 1	Hole 1
7'-18"	Hole 1	Hole 1	Hole 1
7'-20"	Hole 1	Hole 1	Hole 1

Lip Size	Hole
	ALL CAPACITY
6'-16"	Hole 3
6'-18"	Hole 2
6'-20"	Hole 1
6-1/2'-16"	Hole 3
6-1/2'-18"	Hole 2
6-1/2'-20"	Hole 1
7'-16"	Hole 3
7'-18"	Hole 2
7'-20"	Hole 1

TROUBLESHOOTING, continued

Fig. 37



PROBLEM	POSSIBLE CAUSE	SOLUTION
6) Dock level support legs will not swing fully forward	<ul style="list-style-type: none"> a) Leg is binding. b) Chain does not allow enough slack. 	<ul style="list-style-type: none"> a) Check for binding or debris which may be restricting leg. b) Check below dock control chains to assure chain has enough slack to allow leg to swing forward. Adjust as required. See Fig. 37.
7) Lip fails to extend	<ul style="list-style-type: none"> a) Lip extension mechanism is bent or binding. b) Pins are in incorrect position. 	<ul style="list-style-type: none"> a) Check to make sure that the lip extension mechanism is not bent or binding. Be sure all parts are lubricated properly. Lubricate as required. See Fig. 30. b) Make sure all pins and pin retainers are in place and in good condition.
8) Lip extends but fails to stay in extended position	<ul style="list-style-type: none"> a) Lip extension mechanism center bolt is bent or binding. b) Links and connecting rod are not aligned. 	<ul style="list-style-type: none"> a) Check to see that the lip extension mechanism center bolt is straight and free to rotate. See Fig. 35. b) Check to see that the lip extends far enough to allow the links and connecting rod to align and then reach an "over center" position.

PARTS LIST

- To determine the correct replacement parts to order for your adjustable dock leveler, you will need to know its model number, serial number and capacity.
- The model number and capacity can be found on the dock leveler product label located on the frame leg. See Fig. 40 and 41. The meaning of each digit in the model number is shown in Fig. 38.

Example:

aFX 6' x 8'	aFX-S 6' x 8'
- 6' wide	- Safety Lip
- 8' long	- 6' wide
	- 8' long

- To determine the nominal size of your dock leveler, see Fig. 39.

▲ WARNING

To ensure proper function, durability and safety of the product, only replacement parts that do not interfere with the safe, normal operation of the product must be used. Incorporation of replacement parts or modifications that weaken the structural integrity of the product, or in any way alter the product from its normal working condition at the time of purchase from Kelley® could result in product malfunction, breakdown, premature wear, death or serious injury.

Fig. 38

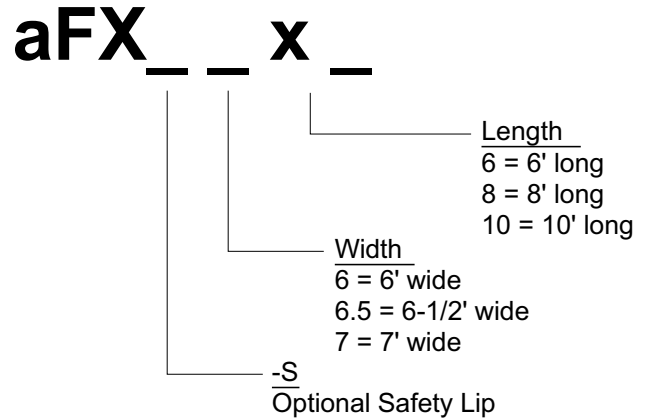
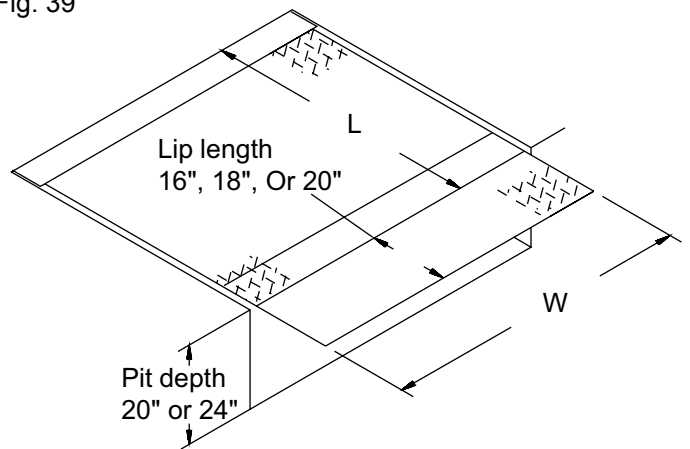


Fig. 39

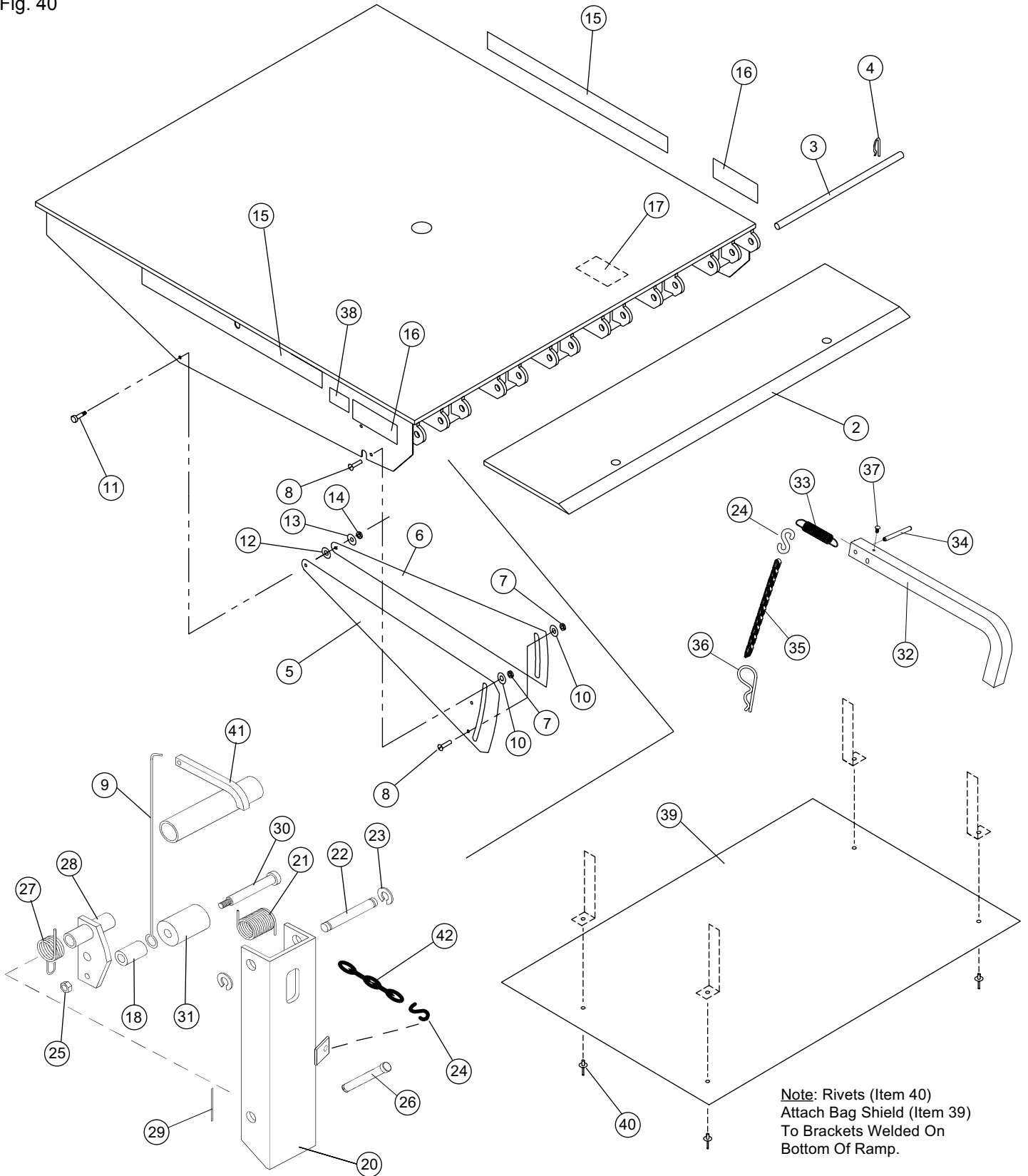


Nominal Size W x L (ft.)	W (in.)	L (in.)
6 x 6	72	63
6 x 8	72	87
6 x 10	72	111
6.5 x 6	78	63
6.5 x 8	78	87
6.5 x 10	78	111
7 x 6	83	63
7 x 8	83	87
7 x 10	83	111

PARTS LIST – aFX DOCK LEVELER

Ramp, Lip, Toe Guards and Lip Lock Assemblies

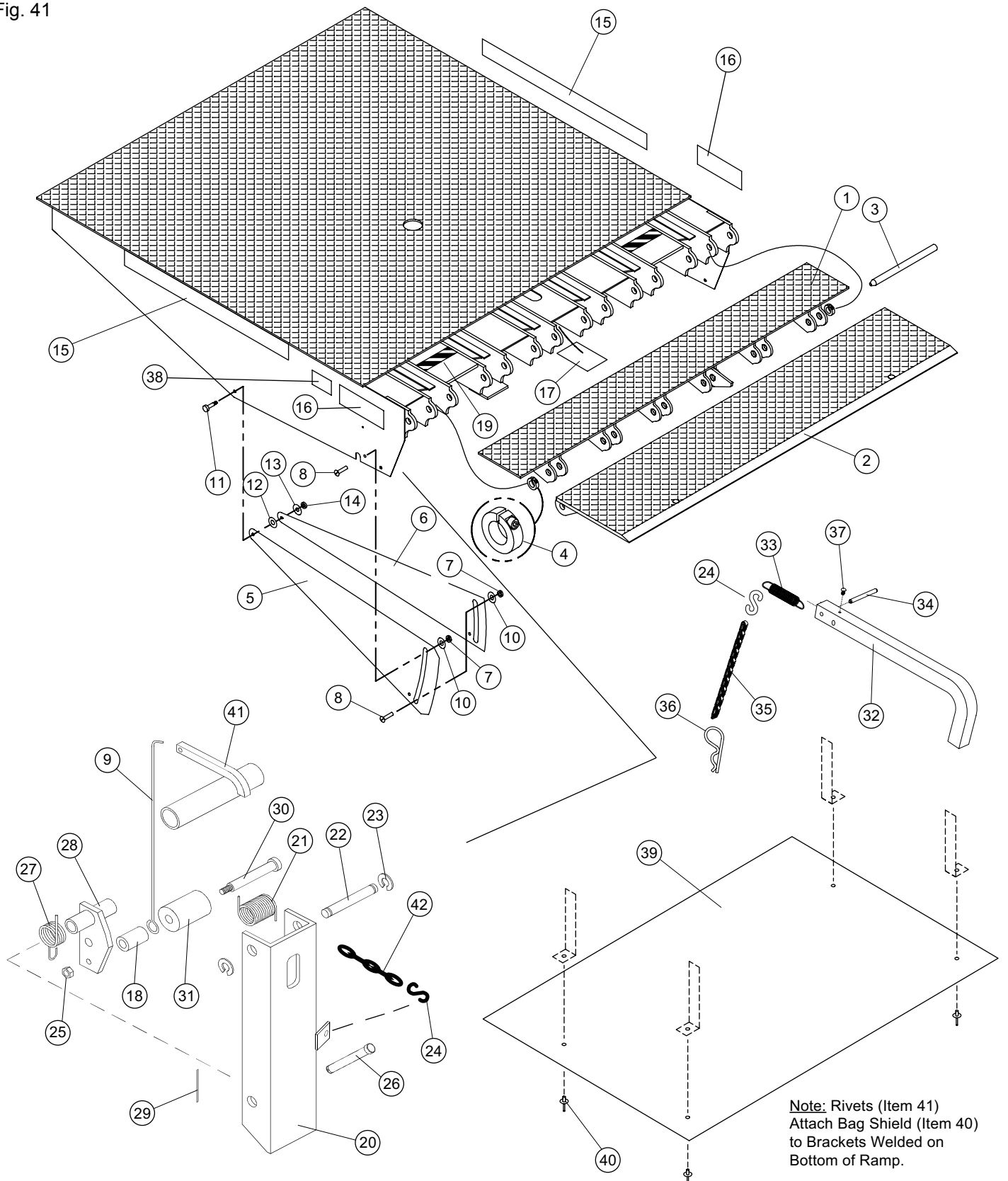
Fig. 40



PARTS LIST – aFX-S DOCK LEVELER

Ramp, Lip, Toe Guards and Lip Lock Assemblies

Fig. 41



PARTS LIST, continued

Ramp, Lip, Toe Guards and Lip Lock Assemblies

ITEM	QTY	PART DESCRIPTION	aFX	aFX-S
1	1	GUARD, SAFETY LIP 6' W. DOCK LEVELER 6-1/2' W. DOCK LEVELER 7' W. DOCK LEVELER	- - -	714-220 714-219 714-218
2	1	LIP, 6FT WIDE, 30K AND 35K CAPACITY 16" X 6' W. 4° BEND 16" X 6' W. 7° BEND 18" X 6' W. 4° BEND 18" X 6' W. 7° BEND 20" X 6' W. 4° BEND 20" X 6' W. 7° BEND	711-858 711-857 711-860 711-859 711-862 711-861	- - - - - -
		LIP, 6-1/2' WIDE, 30K AND 35K CAPACITY 16" X 6.5' W. 4° BEND 16" X 6.5' W. 7° BEND 18" X 6.5' W. 4° BEND 18" X 6.5' W. 7° BEND 20" X 6.5' W. 4° BEND 20" X 6.5' W. 7° BEND	711-876 711-875 711-878 711-877 711-880 711-879	- - - - - -
		LIP, 7' WIDE, 30K AND 35K CAPACITY 16" X 7' W. 4° BEND 16" X 7' W. 7° BEND 18" X 7' W. 4° BEND 18" X 7' W. 7° BEND 20" X 7' W. 4° BEND 20" X 7' W. 7° BEND	711-894 711-893 711-896 711-895 711-898 711-897	- - - - - -
		LIP, 6FT WIDE, 40K, 45K AND 50K CAPACITY 16" X 6' W. 4° BEND 16" X 6' W. 7° BEND 18" X 6' W. 4° BEND 18" X 6' W. 7° BEND 20" X 6' W. 4° BEND 20" X 6' W. 7° BEND	711-864 711-863 711-866 711-865 711-868 711-867	711-864 711-863 711-866 711-865 711-868 711-867
		LIP, 6-1/2' WIDE, 40K, 45K AND 50K CAPACITY 16" X 6.5' W. 4° BEND 16" X 6.5' W. 7° BEND 18" X 6.5' W. 4° BEND 18" X 6.5' W. 7° BEND 20" X 6.5' W. 4° BEND 20" X 6.5' W. 7° BEND	711-882 711-881 711-884 711-883 711-886 711-885	711-882 711-881 711-884 711-883 711-886 711-885
		LIP, 7' WIDE, 40K, 45K AND 50K CAPACITY 16" X 7' W. 4° BEND 16" X 7' W. 7° BEND 18" X 7' W. 4° BEND 18" X 7' W. 7° BEND 20" X 7' W. 4° BEND 20" X 7' W. 7° BEND	711-900 711-899 711-902 711-901 711-904 711-903	711-900 711-899 711-902 711-901 711-904 711-903
		3	2	LIP SHAFT 6' W. DOCK LEVELER 6.5' W. DOCK LEVELER 7' W. DOCK LEVELER
4	2 2	RETAINER, SHAFT - HINGE PIN COLLAR, SHAFT - HINGE PIN	035-451 -	- 131-542
5	2	TOE GUARD, MIDDLE SLIDING 6' LG. DOCK LEVELER 8' LG. DOCK LEVELER 10' LG. DOCK LEVELER	155-554 155-555 155-557	155-554 155-555 155-557

PARTS LIST, continued

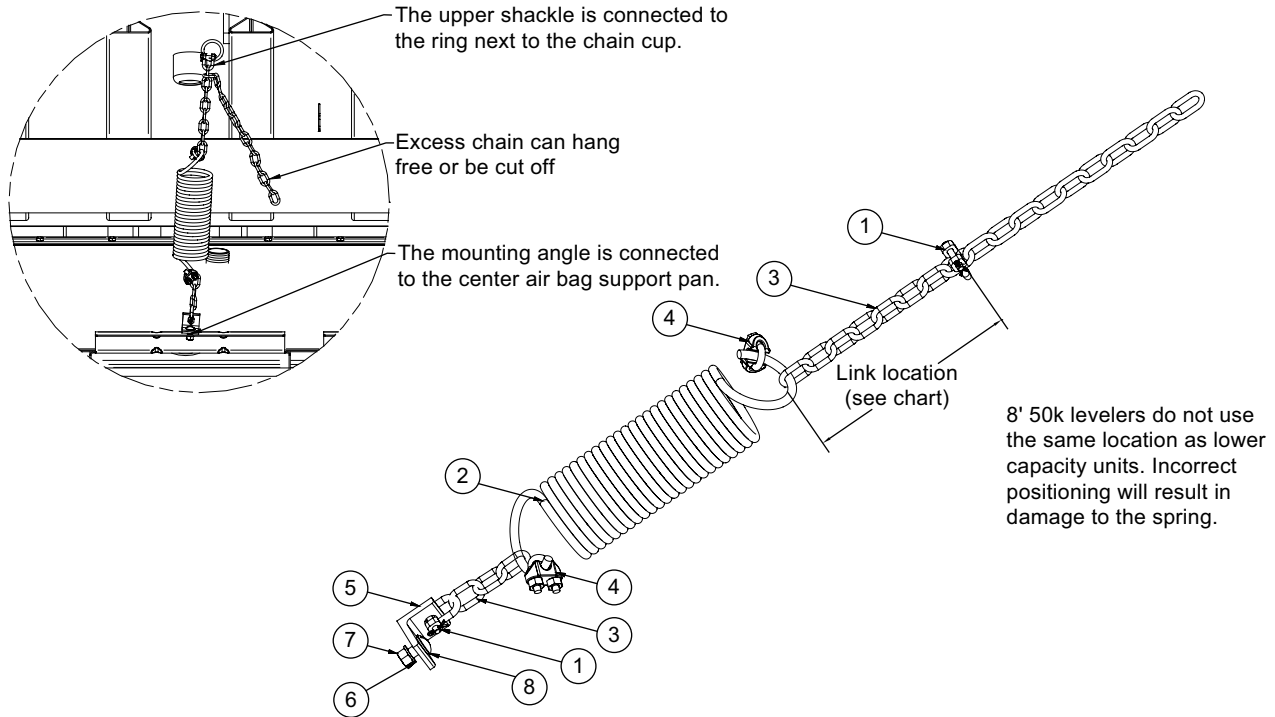
Ramp, Lip, Toe Guards and Lip Lock Assemblies

ITEM	QTY	PART DESCRIPTION	aFX	aFX-S
6	2	TOE GUARD, BOTTOM SLIDING 6' LG. DOCK LEVELER 8' LG. DOCK LEVELER 10' LG. DOCK LEVELER	155-554 155-556 155-557	155-554 155-556 155-557
7	4	NUT, LOCK, 3/8-16	000-253	000-253
8	4	SCREW, TRUSS HEAD 3/8-16 X 1	131-477	131-477
9	2	ROLLER LIFTER, WIRE FORM	101-100	101-100
10	4	SPACER, TOE GUARD	152-878	152-878
11	2	SCREW, SHOULDER	131-455	131-455
12	2	WASHER, 3/8" FLAT	000-214	000-214
13	2	WASHER, 5/16" FLAT	000-055	000-055
14	2	NUT, 5/16-18 NYLOC	131-456	131-456
15	2	LABEL, HAZARD	138-837	138-837
16	2	LABEL, WARNING	6008485	6008485
17	1	LABEL, LIP LOCK	700-136	700-136
18	2	SPACER, PLASTIC PIPE	6001402	6001402
19	4	LABEL, SAFETY STRIPE	-	6008554
20	1 1	SUPPORT, DOCK LEVEL LEFT SIDE (SHOWN) RIGHT SIDE (NOT SHOWN)	714-126 714-125	714-126 714-125
21	2	SPRING, TORSION	030-195	030-195
22	2	PIN, GROOVED	035-338	035-338
23	4	KLIPRING	049-060	049-060
24	3	"S" - HOOK	000-181	000-181
25	2	NUT, LOCK 3/8-16	000-030	000-030
26	2	PIN, CLEVIS 5/8" X 3-1/2" LG.	6001348	6001348
27	2	SPRING, TORSION	101-091	101-091
28	2	WELDMENT, ROLLER ARM	714-070	714-070
29	2	PIN, COTTER 1/8" X 1-1/4"	035-036	035-036
30	2	SHOULDER SCREW 1/2 X 4	6001340	6001340
31	2	ROLLER, CAM FOLLOWER	6001341	6001341
32	1	LEVER, LIP LOCK	155-150	155-150
33	1	SPRING, EXTENSION	700-135	700-135
34	1	PIN, ROLL 3/16" DIA. X 2"	035-149	035-149
35	1	6" LG SASH CHAIN	6001950	6001950
36	1	PIN, COTTER - HAIR	035-200	035-200
37	1	SCREW, DRIVE #6 X 1/4" LG.	000-518	000-518
38	1	DECAL, AFX	138-871	138-871
39	1	BAG SHIELD 6' LG. DOCK LEVELER - ALL CAPACITY 8' LG. DOCK LEVELER - 30K - 45K CAPACITY 8' LG. DOCK LEVELER - 50K CAPACITY 10' LG. DOCK LEVELER - ALL CAPACITY	155-295 155-295 155-400 155-400	155-295 155-400 155-400 155-400
40	4	RIVET, POP 3/16 DIA.	131-271	131-271
41	1 1	LIFTER, ROLLER ARM LEFT HAND RIGHT HAND	714-084 714-083	714-084 714-083
42	1	BELOW DOCK CONTROL CHAIN ASSEMBLY — 6' BELOW DOCK CONTROL CHAIN ASSEMBLY — 8' BELOW DOCK CONTROL CHAIN ASSEMBLY — 10' 6003452	6012661 6003453 6003452	6012661 6003453 6003452

PARTS LIST

Clean pit kit

Fig. 42



NOTE:

The position of the shackle may vary depending on spring tension and chain link size. Positions are for reference and can be adjusted as necessary. Proper installation will lift the bag rollers approximately 8" off the pit floor when the deck is stored.

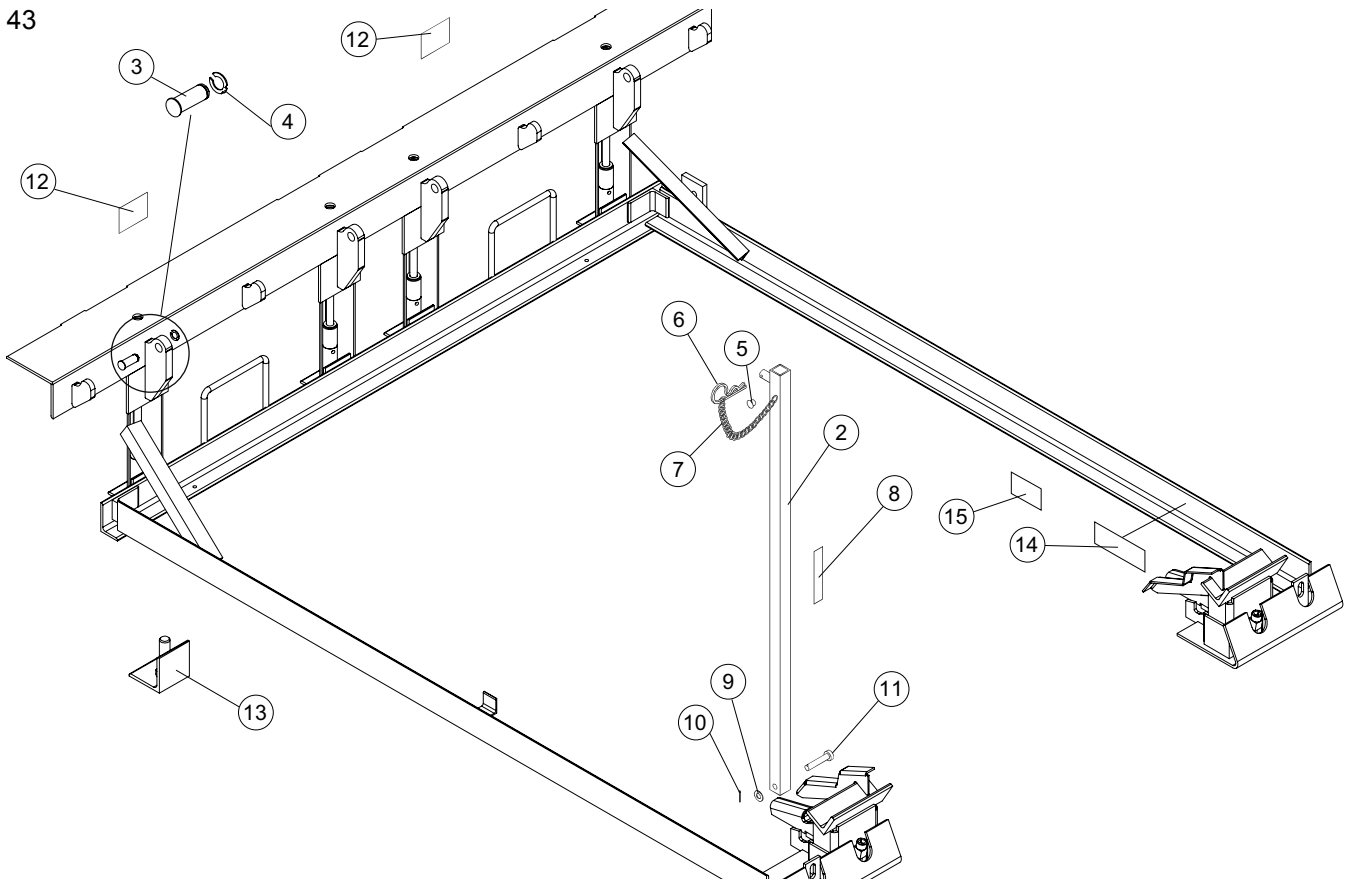
Position	Leveler Size	20" pit	24" pit with 4" wheel riser kit	24" pit w/out 4" wheel riser kit
		Number of links from spring to shackle		
1	8' 50K	8	8	12
2	6', all capacities	10	10	14
3	10' (all capacities)	15	15	18

Item	Quantity	Description	Part Number
1	2	CHAIN SHACKLE-1/4"	442800
2	1	LIP ASSIST SPRING	333043
3	18	3-16 LINK CHAIN	131102
4	2	CABLE CLAMP	441103
5	1	AIR BAG LIFTING KIT ANGLE	6008139
6	2	FLAT WASHER	234091
7	1	UPSET THREAD NUT	000-030
8	1	TRUSS HD MACH SCR 3/8-16 X 1"	000357

PARTS LIST, continued

Subframe and Maintenance Strut Assemblies

Fig. 43

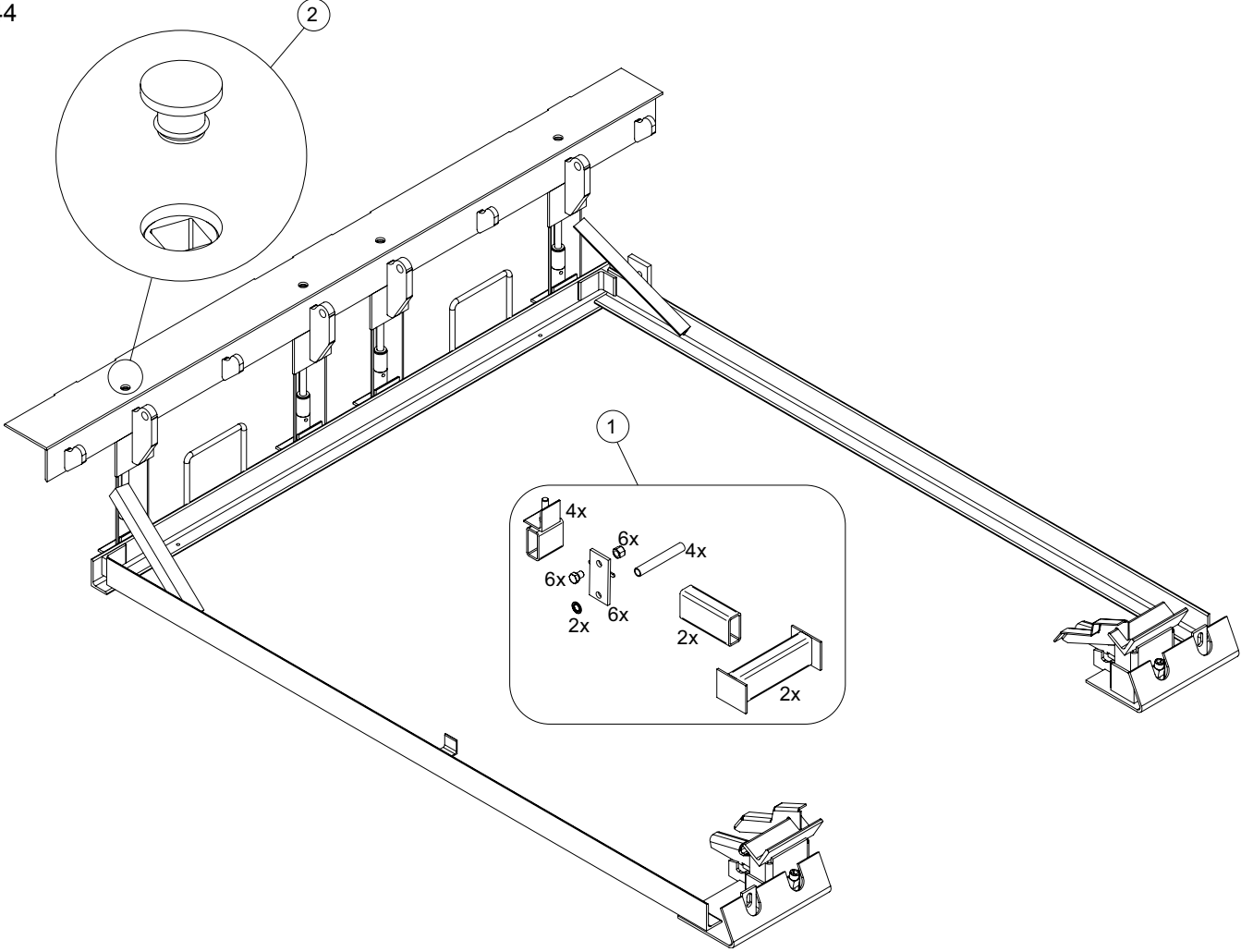


ITEM	QTY	PART DESCRIPTION	aFX	aFX-S
1	1	DOCUMENTATION KIT (NOT SHOWN) MANUAL PLACARD, WARNING AND INSTRUCTIONS	6001953 6004751 6001952	6001953 6004751 6001952
2	1	MAINTENANCE STRUT ASSEMBLY 6' LG. DECK IN 20" PIT 6' LG. DECK IN 24" PIT 8' LG. DECK IN 20" PIT 8' LG. DECK IN 24" PIT 10' LG. DECK IN 24" PIT	710-042 6013620 708-883 6013621 712-537	710-042 6013620 708-883 6013621 712-537
3	4	PIN, HINGE	6004128	6004128
4	4	CLIP RING - 3/4"	236-110	236-110
*5	1	SCREW, DRIVE	000-518	000-518
*6	1	PIN, COTTER - HAIR	035-200	035-200
*7	1	CHAIN, SASH	032-195	032-195
*8	1	DECAL, MAINT. STRUT	921-074	921-074
9	1	WASHER, FLAT 3/8	000-214	000-214
10	1	PIN, COTTER	035-036	035-036
11	1	PIN, CLEVIS	035-051	035-051
12	2	DECAL, FORK LOCATION	921146	921146
13	4	FOOT ASSEMBLY	6002915	6002915
14	1	DANGER LABEL - ENTERING PIT	921-070	921-070
15	1	SERIAL TAG	6009761	6009761

Note: Items 5 - 8 included in item 2.

PARTS LIST, continued
Optional Subframe Riser Kit and Cap Plug

Fig. 44

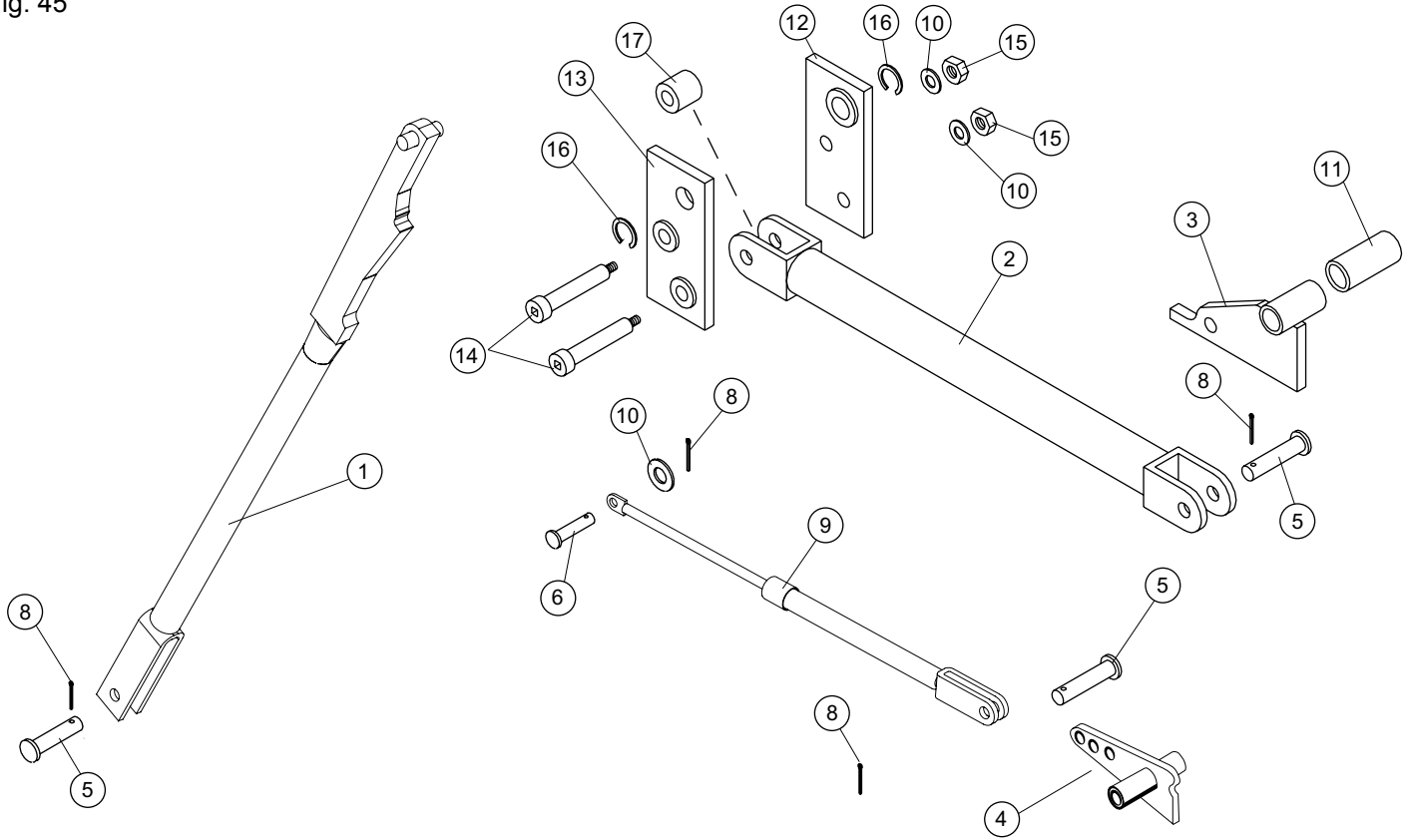


ITEM	QTY	PART DESCRIPTION	aFX	aFX-S
1	1	RISER KIT (FIELD INSTALLED)	6004652	6004652
2	1	REAR ANGLE CAP PLUG	6004487	6004487

PARTS LIST, continued

Connecting Rod, Push Bar and Lip Assist Assemblies

Fig. 45

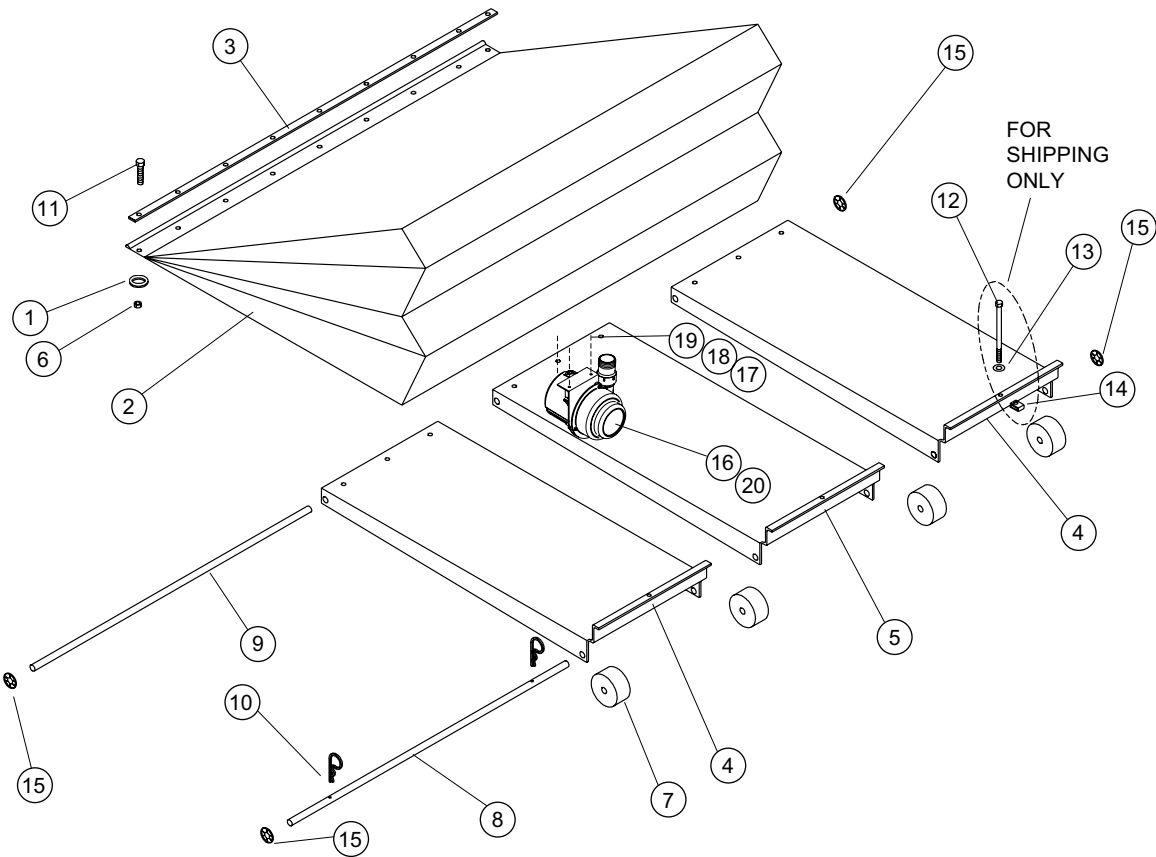


ITEM	QTY	PART DESCRIPTION	aFX	aFX-S
1	1	PUSH BAR	6011490	6011490
2	1	ROD, CONNECTING 6' LG. DOCK LEVELER 8' LG. DOCK LEVELER 10' LG. DOCK LEVELER	711-848 711-849 712-462	711-848 711-849 712-462
3	1	LEVER, LIP LIFTER 6' LG. DOCK LEVELER 8' AND 10' LG. DOCK LEVELER	711-998 711-999	711-998 711-999
4	1	LEVER, LIP ASSIST	155-811	155-811
5	3	PIN, CLEVIS 1/2" DIA. X 1-3/4"	035-010	035-010
6	1	PIN, CLEVIS 3/8" DIA. X 2"	035-150	035-150
8	4	PIN, COTTER 1/8" DIA. X 1-1/4"	035-036	035-036
9	1	GAS SPRING (25K LEVELERS)	6002469	6002469
	1	GAS SPRING (30-45K LEVELERS)	709-437	709-437
10	3	WASHER, 3/8"	000-214	000-214
11	1	SPACER, LIP 6-1/2" WIDE DOCK LEVELER 7" WIDE DOCK LEVELER	287-606 287-607	287-606 287-607
12	1	LINK, RH	712-001	712-001
13	1	LINK, LH	712-002	712-002
14	2	BOLT, SOC. HD. SHLD.	712-061	712-061
15	2	NUT, HEX 3/8-16	000-030	000-030
16	2	KLIPRING 5/8"	049-060	049-060
17	1	ROLLER	700-045	700-045

PARTS LIST, continued

Air Bag/Pan Assembly

Fig. 46



6' LG DOCK LEVELERS – ALL CAPACITY

ITEM	QTY	PART DESCRIPTION	aFX	aFX-S
	1	BAG/PAN/FAN ASSEMBLY (INCLUDES ITEMS 1-20)	714-129	714-129
1	9	WASHER, 3/8" FLAT	000-051	000-051
2	1	LIFTING BAG	714-128	714-128
3	1	CLAMP BAR	157-747	157-747
4	2	PAN, OUTER	156-352	156-352
5	1	PAN, INNER	156-350	156-350
6	9	NUT, NYLOK, 3/8-16	000-253	000-253
7	4	WHEEL	711-846	711-846
8	1	AXLE, FRONT	712-745	712-745
9	1	AXLE, REAR	712-812	712-812
10	2	PIN, COTTER, HAIR	035-200	035-200
11	9	BOLT, HEX HD. 3/8-16 X 1-1/4"	000-357	000-357
12	2	BOLT, 3/8-16 X 7"	131-434	131-434
13	2	WASHER, FLAT 3/8	000-214	000-214
14	2	NUT, RETAINER	131-432	131-432
15	4	RING, RETAINING	131-457	131-457
16	1	FAN MOTOR ASSY – 120V	6008662	6008662
17	2	NUT, HEX LOCK 1/4-20	000-315	000-315
18	2	WASHER, FLAT, 1/4"	131-485	131-485
19	2	SCREW, BUTTON FLG. HD 1/4-20 X 3/4"	131-483	131-483
20	1	NIPPLE	155-578	155-578
N/S	A/R	PATCH KIT, BAG (NOT SHOWN)	184-379	184-379

PARTS LIST, continued

Air Bag/Pan Assembly

8' LG DOCK LEVELERS – 30K, 35K, 40K, and 45K CAPACITY (aFX MODEL only)

8' LG DOCK LEVELERS – 40K, and 45K CAPACITY (aFX-S MODEL only)

ITEM	QTY	PART DESCRIPTION	aFX	aFX-S
	1	BAG/PAN/FAN ASSEMBLY (INCLUDES ITEMS 1-20)	712-805	712-807
	1	LIFTING BAG ASSEMBLY (INCLUDES ITEMS 2,3,6 AND 11)	184-442	184-441
1	9	WASHER, 3/8" FLAT	000-051	000-051
2	1	LIFTING BAG	713-150	713-151
3	1	CLAMP BAR	157-747	157-747
4	2	PAN, OUTER	155-579	155-649
5	1	PAN, INNER	155-580	155-650
6	9	NUT, NYLOK, 3/8-16	000-253	000-253
7	4	WHEEL	711-846	711-846
8	1	AXLE, FRONT	712-745	711-845
9	1	AXLE, REAR	712-812	712-812
10	2	PIN, COTTER, HAIR	035-200	035-200
11	9	BOLT, HEX HD. 3/8-16 X 1-1/4"	000-357	000-357
12	2	BOLT, 3/8-16 X 7"	131-434	131-434
13	2	WASHER, FLAT 3/8	000-214	000-214
14	2	NUT, RETAINER	131-432	131-432
15	4	RING, RETAINING	131-457	131-457
16	1	FAN MOTOR ASSY – 115V	6008662	6008662
17	2	NUT, HEX LOCK 1/4-20	000-315	000-315
18	2	WASHER, FLAT, 1/4"	131-485	131-485
19	2	SCREW, BUTTON FLG. HD 1/4-20 X 3/4"	131-483	131-483
20	1	NIPPLE	155-578	155-578
	A/R	PATCH KIT, BAG (NOT SHOWN)	184-379	184-379

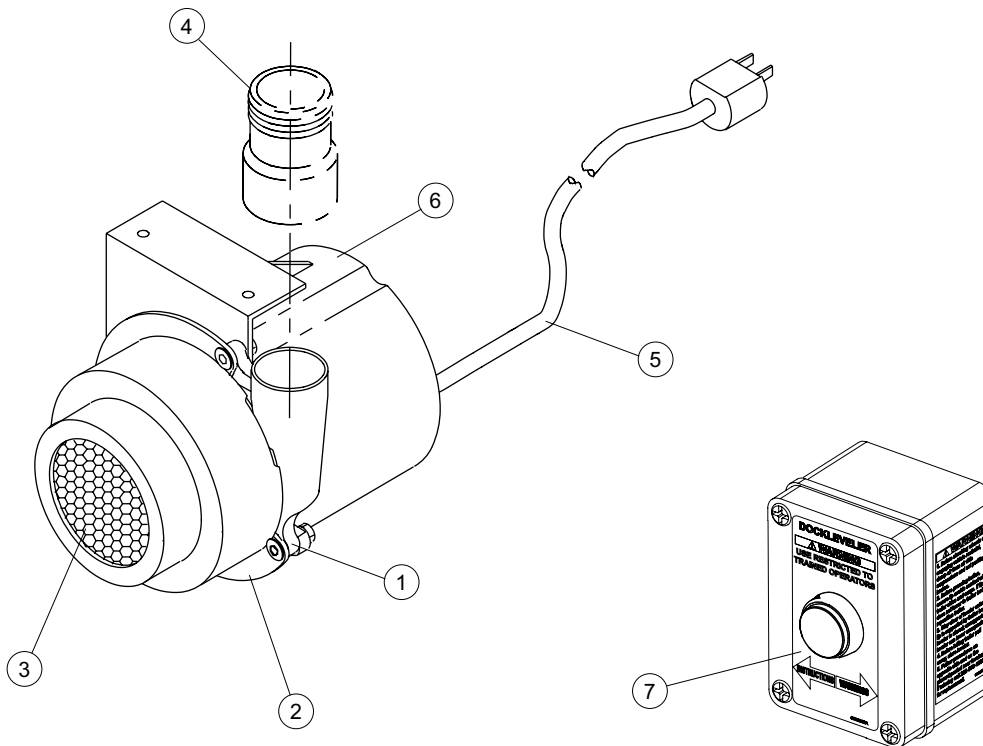
8' LG DOCK LEVELERS – 50K CAPACITY

10' LG DOCK LEVELERS – ALL CAPACITY

ITEM	QTY	PART DESCRIPTION	aFX	aFX-S
	1	BAG/PAN/FAN ASSEMBLY (INCLUDES ITEMS 1-20)	712-807	712-807
	1	LIFTING BAG ASSEMBLY (INCLUDES ITEMS 2,3,6 AND 11)	184-441	184-441
1	9	WASHER, 3/8" FLAT	000-051	000-051
2	1	LIFTING BAG	713-151	713-151
3	1	CLAMP BAR	157-747	157-747
4	2	PAN, OUTER	155-649	155-649
5	1	PAN, INNER	155-650	155-650
6	9	NUT, NYLOK, 3/8-16	000-253	000-253
7	6	WHEEL	711-846	711-846
8	1	AXLE, FRONT	711-845	711-845
9	1	AXLE, REAR	712-812	712-812
10	4	PIN, COTTER, HAIR	035-200	035-200
11	9	BOLT, HEX HD. 3/8-16 X 1-1/4"	000-357	000-357
12	2	BOLT, 3/8-16 X 7"	131-434	131-434
13	2	WASHER, FLAT 3/8	000-214	000-214
14	2	NUT, RETAINER	131-432	131-432
15	4	RING, RETAINING	131-457	131-457
16	1	FAN MOTOR ASSY – 115V	6008662	6008662
17	2	NUT, HEX LOCK 1/4-20	000-315	000-315
18	2	WASHER, FLAT, 1/4"	131-485	131-485
19	2	SCREW, BUTTON FLG. HD 1/4-20 X 3/4"	131-483	131-483
20	1	NIPPLE	155-578	155-578
	A/R	PATCH KIT, BAG (NOT SHOWN)	184-379	184-379

PARTS LIST, continued
Fan/Piping Assembly

Fig. 47



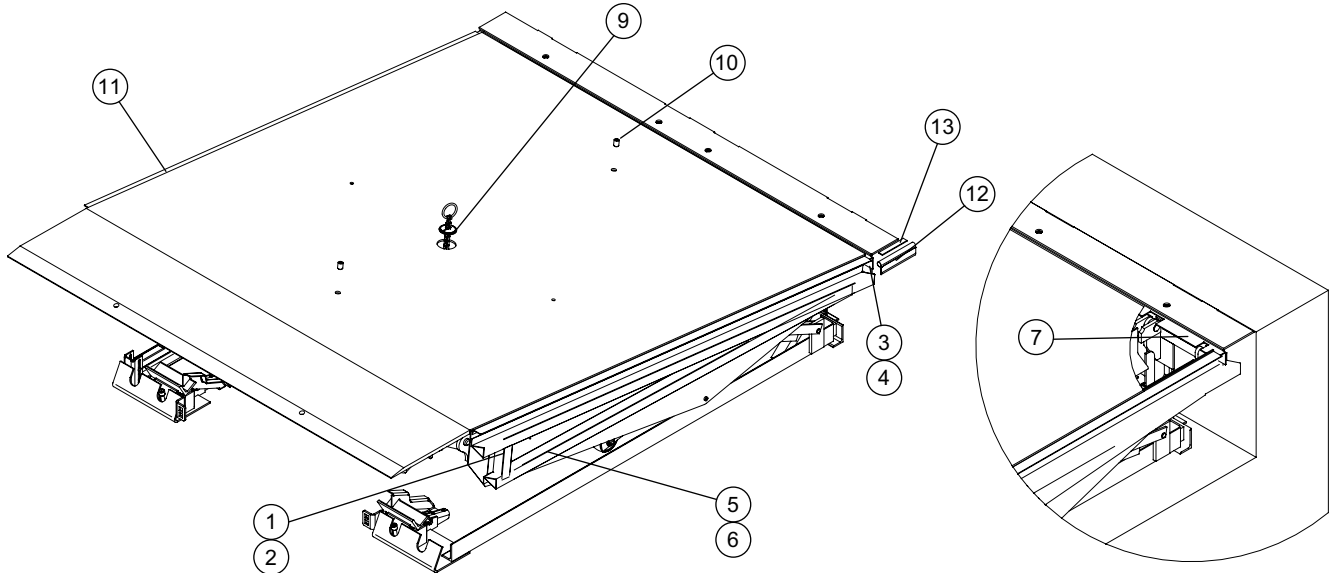
Item	Quantity	Description	Part Number
1	1	MOTOR, AIR 2 STAGE 120V	6008185
2	1	FILTER HOUSING	712-748
3	1	FILTER, FAN	712-196
4	1	NIPPLE	155-578
5	1	CORD W/PLUG	712-027
6	1	HOUSING, FAN	712-813
7	1	115V CONTROL STATION CONTROL STATION (OPTIONAL DUAL CONTACT)*	908-753 909-052

*For use with interlock applications on STAR® 4 and AUTO CHOCK® vehicle restraints.

PARTS LIST, continued

OPTIONAL ENERGY GUARD® DOCK LEVELLER SEALING SYSTEM

Fig. 48



Item	Description	Quantity									Part Number
		6x6 6008228	6.5x6 6008229	6x7 6008230	6x8 6008231	6.5x8 6008232	7x8 6008233	6x10 6008234	6.5x10 6008235	7x10 6008236	
1	5-1/2" front seal	2	2	2	2	2	2	2	2	2	6008166
2	Vertical seal	2	2	2	2	2	2	2	2	2	6008173
3	6' upper seal 8' upper seal 10' upper seal	2	2	2	2	2	2	2	2	2	6008167 6008169 6008171
4	Aluminum strip 53-1/2" Aluminum strip 77-1/2" Aluminum strip 101-1/2"	2	2	2	2	2	2	2	2	2	6008175 6008177 6008179
5	6' Lower seal 8' Lower seal 10' Lower seal.	2	2	2	2	2	2	2	2	2	6008168 6008170 6008172
6	Aluminum strip 6' upper Aluminum strip 8' upper Aluminum strip 10' upper	2	2	2	2	2	2	2	2	2	6008174 6008176 6008178
7	6' Kelley rear seal 6.5' Kelley rear seal 7' Kelley rear seal	1	1	1	1	1	1	1	1	1	6007671 6007672 6007673
8	TEK screws (not shown)	26	26	26	26	26	26	28	28	28	215702
9	Chain cup seal	2	2	2	2	2	2	2	2	2	0392
10	3/4-10 Set screw	2	2	2	2	2	2	2	2	2	6008249
11	W/seal 600 W brush W/seal 800 W brush W/seal 600 W brush cut	2	2	2	2	2	2	2	2	2	328907 328908 328910
12	Corner bulb seal	2	2	2	2	2	2	2	2	2	6009507
13	Transition angle seal (optional)	2	2	2	2	2	2	2	2	2	6008247