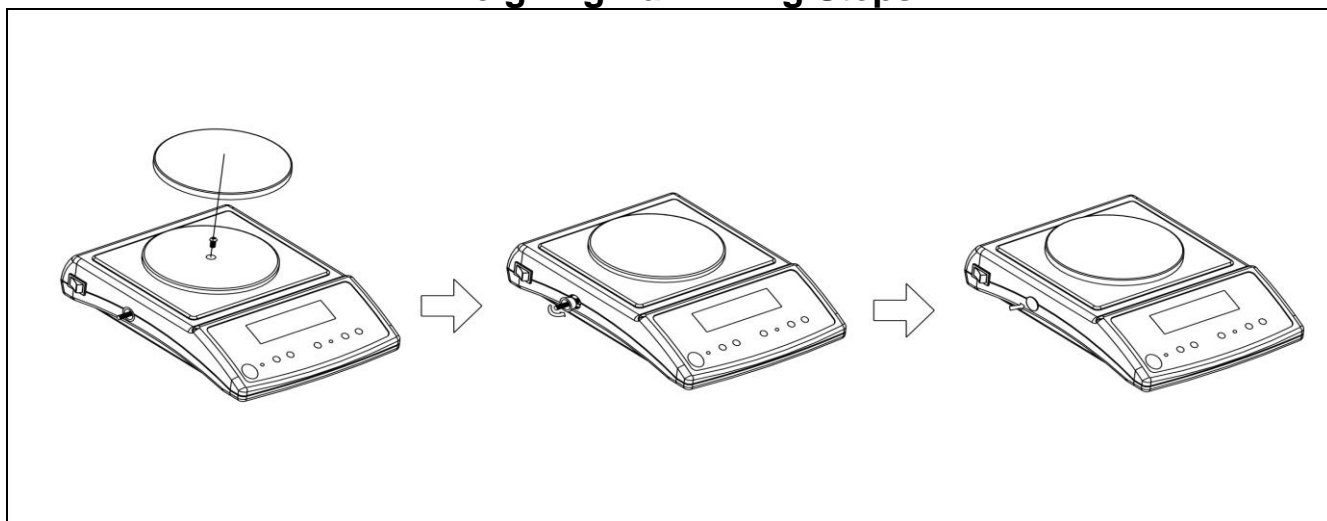


---

# Contents

|                                     |       |   |
|-------------------------------------|-------|---|
| Fixing the Weighing Pan             | ----- | 1 |
| Protection Device Disassembly Steps | ----- | 1 |
| Precautions                         | ----- | 1 |
| Descriptions of Keys                | ----- | 2 |
| Functional Operation of Keys        | ----- | 2 |
| Panel Illustration                  | ----- | 3 |
| Single Point Calibration of Weight  | ----- | 3 |
| Linearity Calibration of Weight     | ----- | 4 |
| Parameter Setting                   | ----- | 5 |
| Parameter Functional Description    | ----- | 6 |
| Units Conversion Table              | ----- | 7 |
| Cross-reference Table of Full Loads | ----- | 7 |
| RS-232 Serial Interface             | ----- | 8 |

## Weighing Pan Fixing Steps



1. When installing the weighing pan, tighten the fixing screw in the centre of the plastic weighing pan.

2. Unscrew and remove the shipping protection screw on the side of the scale.

3. After removing the shipping protection screw on the side of the scale, fasten the shipping protection buckle.

## Protection Device Disassembly Steps

1. In the upright position, locate the shipping protection screw device on the left side of the scale.

2. Before using the scale, unscrew counterclockwise and remove the shipping protection screw.

3. Before transporting the scale, hold the shipping protection screw down inwards and tighten it clockwise.

## Precautions

1. Please pay attention to the environment when performing weight calibration on the scale. Avoid wind blow and vibration.

2. Use of wrong batteries or wrong wiring may cause danger.

3. 10 minutes warm up till the RED light off before activating the scale.

---

## Descriptions of Keys

**ON/OFF:** The on/off key for switching on/off the equipment.

**ZERO:** The zero key for resetting the equipment, functional only when weight is within 4% of the weighing capacity.

**TARE:** The tare key for deducting the weight of container on the weighing pan.

**MODE:** The switching key to select weighing, counting and percentage modes in turn.

**UNIT:** Weighing units switching key. (13 kinds of units)

**SMPL:** In the weighing mode, the key is for switching on/off backlight; in the counting and percentage modes, the key is for sampling, by pressing which, you may select sample size of 20, 50, 100, 200 or 500 in turn.

## Functional Operation of Keys

### Weighing:

Press [ **ON/OFF** ] key, the screen will have full display and start counting down. When the screen displays **0.00 X**, you can start weighing. If you need backlight, press [ **SMPL** ] key.

### Counting:

Press [ **MODE** ] key, the screen will show **XXXX pcs**, then press [ **SMLP** ] key, and the screen will show **S= 20pcs**. You may select sample size of 20, 50, 100, 200 or 500 in turn by pressing [ **SMLP** ] in succession. After selection, put the sample on the weighing pan and start counting operation when you hear a beep sound. (Automatic averaging function is provided for simple counting)

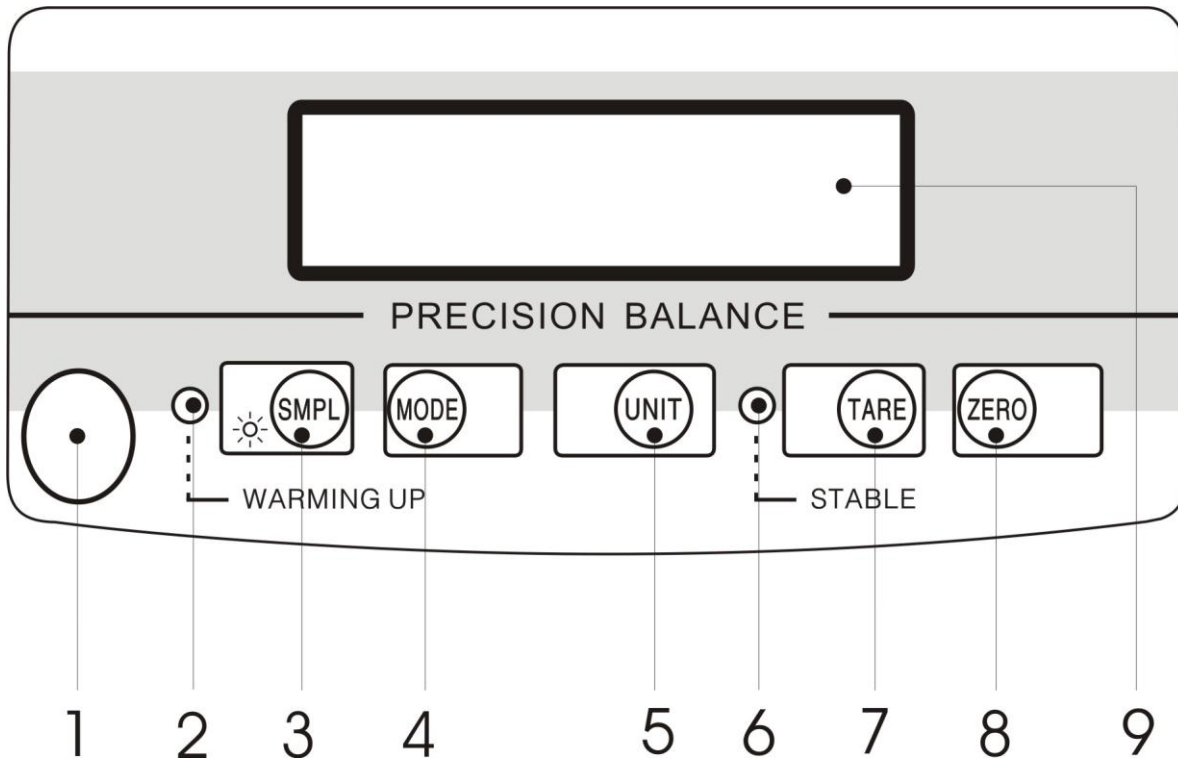
### Percentage:

Press [ **MODE** ] key, the screen will show **XXXX %**, then press [ **SMLP** ] key, and the screen will show **S= 20 %**. You may select sample size of 20, 50, 100, 200 or 500 in turn by pressing [ **SMLP** ] in succession. After selection, put the sample on the weighing pan and start using the percentage function when you hear a beep sound.

### Notes:

1. Min. unit weight of sample  $\geq 1$  readability (e.g.: unit weight of sample of 300g is at least bigger than 0.01g)
2. When weight is unstable, the **STABLE** indicator will go off.
3. After warming up the machine, the **WARMING** indicator will go off.

## Panel Illustration



|   |                        |   |                       |
|---|------------------------|---|-----------------------|
| 1 | Level                  | 6 | Stable indicator      |
| 2 | Warming up indicator   | 7 | Tare key              |
| 3 | Sampling/Backlight key | 8 | Zero key              |
| 4 | Function selection key | 9 | Weight display window |
| 5 | Unit conversion key    |   |                       |

### Single Point Calibration of Weight

**Step 1:** Power off while holding down 「MODE」 key, and then press 「ON/OFF」 to switch on the scale. The screen will show the following:

**Count**

**Step 2:** Press the 「MODE」 key, the screen will show the following:

**CAL**

**Step 3:** Press the 「UNIT」 key to start zero point calibration. Make sure there is nothing on the weighing pan. The screen will show the following:

**ZErO**

Please wait for the screen to show:

---

## CAL-S

The calibration can be done at the point of 1/3 load, 2/3 load or full load. Choose the one you need and place the corresponding weight onto the pan.

If place 1/3 of load onto the pan, the screen will show:

on1

If place 2/3 of load onto the pan, the screen will show:

on2

If place full load onto the pan, the screen will show:

on3

**Step 4:** Place weights of equivalent weight onto the pan, wait for a beep sound and the screen will show:

PASS

**Step 5:** Press [MODE] and then press [SMPL], the screen will show:

busy

**Step 6:** After countdown, the single point calibration is completed and the scale returns to the normal weighing mode.

## Linearity Calibration of Weight

**Step 1:** Power off while holding down [ZERO] and [TARE] keys, and then press [ON/OFF] to switch on the scale. The screen will show the following:

L-CAL

**Step 2:** Clear the weighing pan, then press [TARE] and the screen will show the following: (zero point calibration)

on0

**Step 3:** Wait for a beep sound and the screen will show the following:

on1

**Step 4:** Place 1/3 of load on the weighing pan in ten seconds, Waiting for a beep sound and the screen will show the following:

on2

**Step 5:** Place 2/3 of load on the weighing pan in ten seconds, Waiting for a beep sound and the screen will show the following:

on3

**Step 6:** Place full load on the weighing pan in ten seconds, Waiting for a beep sound and the screen will show the following:

PASS

**Step 7:** Clear the weighing pan, then press [TARE] and the screen will show the following:

busy

**Step 8:** After countdown, the linearity calibration is completed and the scale returns to the normal weighing mode.

## Parameter Setting

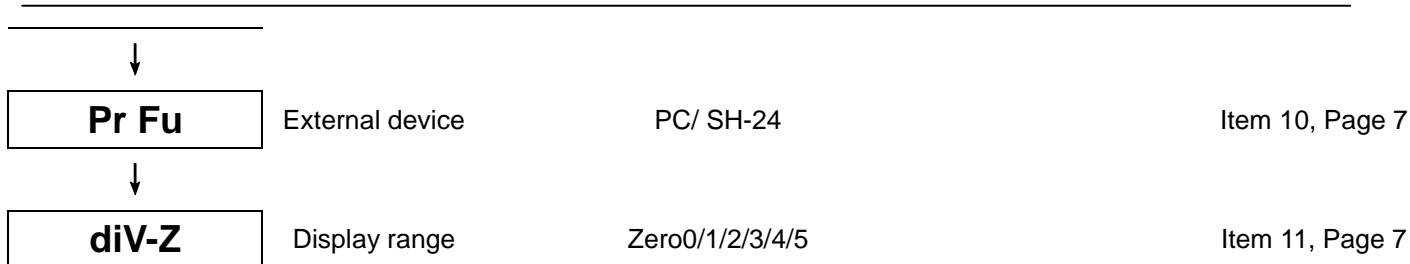
Hold down [ **MODE** ] key, then press [ **ON/OFF** ] key to enter the setting mode. The screen will show Count :

[ **MODE** ] key: To select functions;

[ **UNIT** ] key: To enter or exit function setting selection;

[ **SMPL** ] key: To end setting.

| <i>LCD Display</i>   | <i>Function</i>               | <i>Selection</i>   | <i>Selection</i>    | <i>Page</i>    |
|--|-------------------------------|--|---------------------|----------------|
| [ <b>MODE</b> ] key  |                               | [ <b>UNIT</b> ] key  | [ <b>SMPL</b> ] key |                |
| <span style="border: 1px solid black; padding: 5px;"><b>Count</b></span> | Internal value display        |  |                     | Item 1, Page 6 |
| ↓  |                               |  |                     |                |
| <span style="border: 1px solid black; padding: 5px;"><b>CAL</b></span>   | Single point auto calibration |  |                     | Page 3         |
| ↓  |                               |  |                     |                |
| <span style="border: 1px solid black; padding: 5px;"><b>unit</b></span>  | Weight unit selection         | g, ct, lb, oz, dr, GN, ozt, dwt, MM, tl.j, tl.T(g/m <sup>2</sup> ), tl.H, t(oz/yd <sup>2</sup> ), ( ) for plaiting purpose | ON/OFF              | Item 2, Page 6 |
| ↓  |                               |  |                     |                |
| <span style="border: 1px solid black; padding: 5px;"><b>InitU</b></span> | Initial weight unit selection | g, ct, lb, oz, dr, GN, ozt, dwt, MM, tl.j, tl.T(g/m <sup>2</sup> ), tl.H, t(oz/yd <sup>2</sup> ), ( ) for plaiting purpose |                     | Item 3, Page 6 |
| ↓  |                               |  |                     |                |
| <span style="border: 1px solid black; padding: 5px;"><b>Auto</b></span>  | Auto power-off selection      | Au-no/5/15/30/60   |                     | Item 4, Page 6 |
| ↓  |                               |  |                     |                |
| <span style="border: 1px solid black; padding: 5px;"><b>bAud</b></span>  | Baud rate selection           | 2400/4800/9600   |                     | Item 5, Page 6 |
| ↓  |                               |  |                     |                |
| <span style="border: 1px solid black; padding: 5px;"><b>ZERo</b></span>  | Auto zero range selection     | d0/1/2/3/4/5   |                     | Item 6, Page 6 |
| ↓  |                               |  |                     |                |
| <span style="border: 1px solid black; padding: 5px;"><b>Fil</b></span>   | Filter selection              | Fil1/2/4/8   |                     | Item 7, Page 6 |
| ↓  |                               |  |                     |                |
| <span style="border: 1px solid black; padding: 5px;"><b>LigH</b></span>  | Backlight selection           | onoFF/oFF/ON   |                     | Item 8, Page 6 |
| ↓  |                               |  |                     |                |
| <span style="border: 1px solid black; padding: 5px;"><b>Print</b></span> | Printing mode selection       | Pr-St/Co   |                     | Item 9, Page 7 |



1. When the LCD display shows Count, press the 「UNIT」 key, the current internal value will be displayed. Press 「UNIT」 to return to LCD display Count.
2. When the LCD display shows unit, press「UNIT」 to enter into unit selection mode, the screen will show on g or oFF g, “on” means to use the current unit displayed, “oFF” means not to use the current unit displayed. Press 「SMPL」 to switch between ON and OFF [to use the unit displayed select “on”, if you do not require the unit displayed select “oFF”]. Press 「UNIT」 to select from 13 kinds of weighing units, after selecting the unit required, press 「MODE」 to return to LCD display unit.
3. When the LCD display shows InitU , press 「UNIT」 to enter initial unit selection mode. LCD display InitU xx X means the initial unit is selected. Press 「UNIT」 to select the unit required, then Press 「MODE」 to return to LCD display InitU.
4. When the LCD display shows Auto, press 「UNIT」 to enter the Auto Power-Off selection. LCD display XXX X means Auto Power-off selection. Press 「UNIT」 to select the auto power-off time, then press 「MODE」 to return to LCD display Auto.  
『Au-no- means No auto power-off, 5- means 5 minutes, 15-means 15 minutes, 30-means 30 minutes, 60-means 60 minutes』 (in case of instability, the auto power-off function will not work)
5. When the LCD display shows bAud, press 「UNIT」 to enter the RS-232 Baud Rate selection. LCD display XXX X represents the RS-232 baud rate. Press 「UNIT」 to select the desired RS-232 baud rate, then press 「MODE」 to return to LCD display bAud. 『2400, 4800, 9600』
6. When the LCD display shows ZEro, press 「UNIT」 to enter auto zero range selection. LCD display d X X represents the auto zero range. Press 「UNIT」 to select the desired auto zero range, then press 「MODE」 to return to LCD display ZEro 。 『d0, 1, 2, 3, 4, 5』 (the higher the value is, the wider auto zero range is)
7. When the LCD display shows FiL, press 「UNIT」 to enter filter setting mode. LCD display FiL X X means the filter level. Press 「UNIT」 to select the desired filter level and press 「MODE」 to return to LCD display FiL. 『FiL1, 2, 4, 8』 (the higher the value is, the higher the filter level is)
8. When the LCD display shows LigH, press「UNIT」to enter backlight setting mode.

The LCD display  X represents the backlight setting. Press 「UNIT」 to select the desired backlight setting and press 「MODE」 to return to LCD display .  
『onoFF- means auto-backlight, oFF-means backlight off, ON-means backlight on.』

9. When the LCD display shows , press 「UNIT」 to enter printing mode selection. LCD display  X represents the printing mode. Press 「UNIT」 to select the desired printing mode and press 「MODE」 to return to LCD display . 『Pr-Co-means continuous output, Pr-St means stable output.』
10. When the LCD display shows , press 「UNIT」 to enter external device selection mode. LCD display  X represents external device. Press 「UNIT」 to select the desired external device, then press 「MODE」 to return to LCD display . 『-PC external PC, SH-24 external dot matrix mini printer.』
11. When the LCD display shows , press 「UNIT」 to enter external device selection mode. LCD display  X represents display range. Press 「UNIT」 to select the desired external device, then press 「MODE」 to return to LCD display . 『Zero0, 1, 2, 3, 4, 5.』 (means weight displayed when the weight exceeds the capacity)
12. Before entering function setting, press 「SMPL」 to end function setting and return to normal weighing mode. Press the 「MODE」 key continuously to select function setting modes.

### Units Conversion Table

|                      |                          |               |   |
|----------------------|--------------------------|---------------|---|
| 1 ct                 | [MET.CARAT]              | =0.1999694    | g |
| 1 lb                 | [AVORIRDUPOIS POUND]     | =453.59237    | g |
| 1 oz                 | [AVORIRDUPOIS OUNCE]     | =28.349523125 | g |
| 1 dr                 | [AVOIRDUPOIS DRAM]       | =1.7718451    | g |
| 1 GN                 | [GRAIN](U.K)             | =0.06479891   | g |
| 1 ozt                | [TROY OUNCE]             | =31.1034768   | g |
| 1 dwt                | [PENNY WEIGHT]           | =1.55517384   | g |
| 1 MM                 | [MOMME] (JPN)            | =3.749996     | g |
| 1 tl.j               | [HONG KONG JEWELRY TAEI] | =37.4290018   | g |
| 1 tl.T               | [TAEI](TWN)              | =37.49995     | g |
| 1 tl.H               | [HONG KONG TAEI]         | =37.799375    | g |
| 1 t                  | [TOLA] (INDIA)           | =11.6638038   | g |
| 1 oz/yd <sup>2</sup> |                          | =0.33898306   | g |
| 1 g/m <sup>2</sup>   |                          | =0.01         | g |



### Cross-reference Table of Full Loads

| CAP                | 150             | 300             | 600           | 1500          | 3000          |
|--------------------|-----------------|-----------------|---------------|---------------|---------------|
| Gram               | 150X0.005       | 300×0.01        | 600×0.02      | 1500×0.05     | 3000×0.1      |
| Carat              | 750.34X0.02     | 1500.70X0.05    | 3001.36X0.1   | 7503.4X0.2    | 15007.0X0.5   |
| Pound(Avoir)       | 0.33080X0.00002 | 0.66160X0.00005 | 1.323X0.0001  | 3.3080X0.0002 | 6.6160X0.0005 |
| Ounce(Avoir)       | 5.2926X0.0002   | 10.5855X0.0005  | 21.171X0.001  | 52.926X0.002  | 105.855X0.005 |
| Dram(Avoir)        | 84.685X0.005    | 169.37X0.01     | 338.72X0.02   | 846.85X0.05   | 1693.7X0.1    |
| Grain              | 2315.5X0.1      | 4631.0X0.2      | 9262.0X0.5    | 23155X1       | 46310X2       |
| Ounce(Troy)        | 4.8240X0.0002   | 9.6480X0.0005   | 19.296X0.001  | 48.240X0.002  | 96.480X0.005  |
| Penny weight       | 96.480X0.005    | 192.96X0.01     | 385.92X0.02   | 964.80X0.05   | 1929.6X0.1    |
| Momme              | 40.012X0.002    | 80.025X0.005    | 160.05X0.01   | 400.12X0.02   | 800.25X0.05   |
| Tael (HK Jewelry)  | 4.0088X0.0002   | 8.0175X0.0005   | 16.035X0.001  | 40.088X0.002  | 80.175X0.005  |
| Tael (Taiwan)      | 4.0012X0.0002   | 8.0025X0.0005   | 16.005X0.001  | 40.012X0.002  | 80.025X0.005  |
| Tael (Hong Kong)   | 3.9696X0.0002   | 7.9390X0.0005   | 15.878X0.001  | 39.696X0.002  | 79.390X0.005  |
| Tola (India)       | 12.865X0.0005   | 25.728X0.001    | 51.456X0.002  | 128.640X0.005 | 257.28X0.01   |
| oz/yd <sup>2</sup> | 442.49X0.01     | 884.99X0.01     | 1770.27 X0.01 | /             | /             |
| g/m <sup>2</sup>   | 15000.5 X0.5    | 30000 X1        | 60000 X1      | /             | /             |

Note: Full Load = Capacity + (Readabilityx9)

### RS-232 Serial Interface

The 9PIN connector at the right back is a RS-232 standard interface. Pin 3 is for output, Pin 5 is for grounding and the rest have no functions.

BAUD RATE: 2400 OR 4800 OR 9600 bps

DATA BIT: 8

PARITY BIT: N ( NONE )

STOP BIT: 1

CODE: ASCII

