

OVER
3 MILLION
SATISFIED CUSTOMERS



IIFB

Fully Automatic Washing Machine Instruction Manual

	IIFB AT HOME			customerservice@iifbappliance.com • marketing@iifbappliance.com
	1860 4255678 <small>(for B2B and M/FNL)</small>	39004321 <small>(for others)</small>	SMS 'IIFB' to 58888	For more details or product registration log on to www.iifbappliances.com

MODEL:AW6501SB

Thank you for selecting this fully automatic washing machine
Before operating this unit, please read this operation manual thoroughly

INDEX



Keyfeatures	1
Name of respective parts	1
accessories	2
Simple installation	2
Simple operation	5
Control panel design	6
My wash features	8
Automatic program	10
Fully automatic program	10
Additional explanation	10
Operation method	11
Delay time program	11
Confirmation of the delay and inspection	11
Cancel the delay time or alternate the delay time	11
Use the cleaning solution for twice	11
Pre-wash of dirty clothes	11
Blanket wash	11
Laundry volume and detergent dosage reference	12
Weight standard of clothes	12
Washing tips	12
Method of maintenance	13
Trouble shooting	14
Other functions	15
Function of fault alarm	15
Function of automatic power shut off	15
Function of adjusting for unbalance	15
Precautions	16
Specification	17

Name of parts



Key features:

Transparent window, unique outlook design:
Adopting the vogue transparent cover, let's be clear at a glance in the course of washing.

Spraying water flow, washing more drastically:
Adopting unique pulsator can produce spraying water flow from the bottom, to break up the wrapped clothing, so that the clothing can be washed more sufficiently and uniformly.

Complete function, easy and simple using:
The fully automatic program, and etc, ever and again satisfy your family's needs of washing clothes.

Slight vibration, low noise:
The sun-and-planet gear technology is applied to the mechanical transmission devices, reducing the mechanical noise.

Compact structure, pleasing appearance and durable:
The mezzo-capacity the cabinet sprayed with plastic powder and the base made of engineering plastic, it is resistible to corrosion and durable.

The water injection can be selected:
You can select the water injection mode by temperature button.

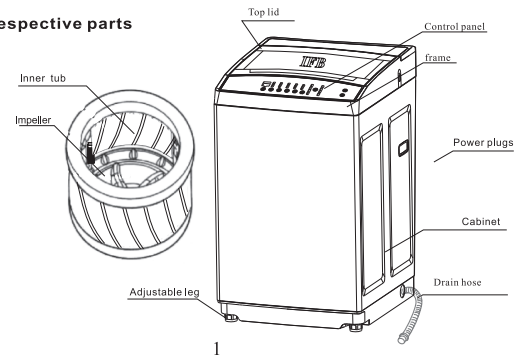
Memory back-up function:
Special made memory back-up function, prevent you from harassment of the power cut which provide your family with a comfortable washing environment.

Bubble Wash function:
The high frequency air bubble power maximizes the efficiency of detergent enzymes on the clothes.

My Wash functions:
This function allows you to create your own program timing and features with its unique feature.

Name of parts

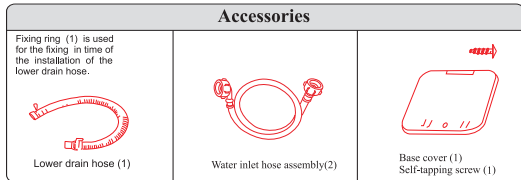
• Name of respective parts



SIMPLE INSTALLATION



Accessories



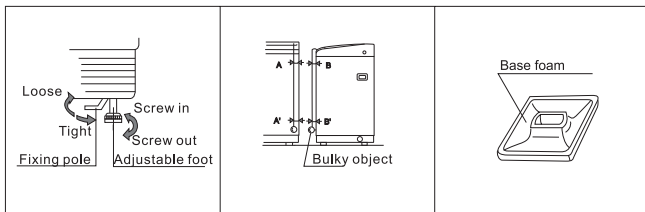
Simple installation

Step 1: The machine should be placed in the room that is flat, convenient for water supply and drain, has low moisture and no direct sunshine, and does not freeze in winter.

Step 2: All foam packing should be taken off, otherwise the machine will not work.

Step 3: Adjust the machine even on the ground according to the instructions below to make the machine run steadily and in low noise.

1. Loosen the fixing pole, and screw in or screw out the adjustable foot to make four feet of the machine placed even on the floor.
2. When the floor is slanting or uneven it is not easy to adjust the machine even only by the adjustable foot.
3. Use a thread tied with bulky object to be hung on the front face and side face of the machine, as the figure: when $A=A'$, $B=B'$, that is to show the machine is placed flat.
4. After the adjustment, the fixing pole should be screwed back tightly.



Notices:

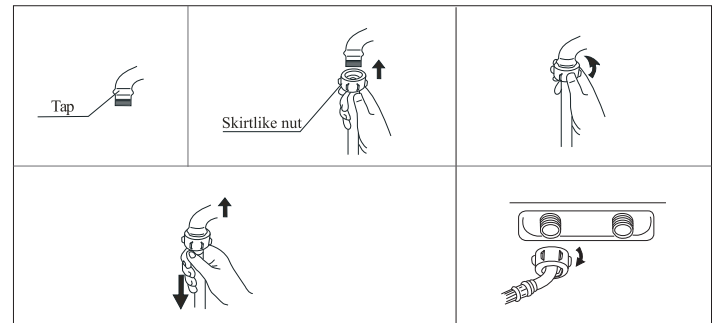
If the washing machine is not placed flat (the inclination angle is over 2°), it may cause great vibration or automatic self-rectification or other abnormal phenomenon in the course of spinning.

SIMPLE INSTALLTION



Step 4: Installation of water inlet hose

1. Check the tap mouth. Fix the water inlet hose to the tap.
2. Pull the skirtlike nut of one end of the water inlet hose upwards, and then screw into the tap tightly.
3. Grasp the water inlet hose by hand and pull it downwards to see whether it is securely fixed.
4. Fix the other end of the water inlet hose in to the machine.



Notice:

After installation water inlet hose, do not start the washing machine in haste. First open the tap to create certain water pressure in the hose to check whether there is any leakage in the connector on both ends. If the pressure is too high, please shut the tap a little to avoid water leakage.

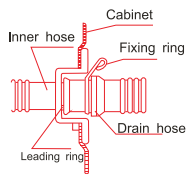
SIMPLE INSTALLATION



Step 5: Installation of drain hose

Installation of drain hose

1. Nip the fixing ring with hand to make it loose and then engage it on the drain hose. Put the drain hose into the leading skirt in the bottom of the machine, and put it to the most. (Soak the head of the drain hose in warm water it will make the engagement easy). At last, loose the fixing ring to let it clamp the drain hose.
2. Keep the outlet of drain hose into nearby drainage permanently to avoid shifting each time you wash, you can add one more drain hose to extend its length if the drainage is far from machine.



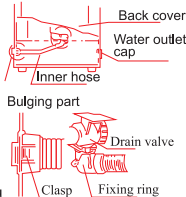
Notices: Drain faults will be caused when the drain hose is blocked.

Step 6: Alteration of the drain direction

Alteration of the drain direction

Drain pipe direction can be altered in both right & left hand side of machine

1. Unscrew the back cover, take off the back cover and the drain outlet cap on left.
2. Nip the fixing ring with hand to make it loose and then pull out the inner hose.
3. Press the connecting clasp and fetch the inner hose from the right hole and then put it into the left hole.
4. First press the connector into the left hole on the cabinet, and the sound of "KA-TA" means proper connection.
5. Nip the fixing ring again to let it loosely engaged on the inner hose and put the inner hose back to the water outlet of the drain valve, move the fixing ring to clasp the inner hose.
6. Put the back cover back again.



SIMPLE INSTALLATION

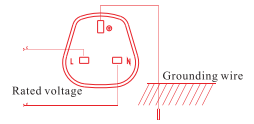


Step 8: Power source and grounding

The washing machine employs alternative current with rated voltage, and rated frequency. When the voltage fluctuates between 230V \pm 15%, the machine can work normally. A special power socket should be set beside the washing machine for convenience and safety. The method of connecting the socket is as the figure below:

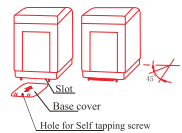
Notices:

- The socket and the grounding wire must be installed by an electrician to prevent incorrect installation and use of socket, and to guarantee safe use of electricity.
- The power wire of the washing machine employs Y connection and the replacement of the power wire should be carried out by professionals.
- There should be no connection of the grounding wire with the neutral wire, otherwise the cabinet will be charged, which is likely cause the danger of electric shock.



Step 9: Installation of base cover

1. Tilt the washing machine with angle of 45° in the direction of the arrows showed in the figure. Insert base cover between the slots provided at the back side of the washing machine.
2. Put the base cover straight to the point and then press the base cover upward till there is a sound of "Gaba" and then screw in a self-tapping screw(there is no self-tapping screw for plastic cabinet).



Simple operation

Preparation before using:

1. Lay the drain hose to proper place.
2. Connect the water inlet hose and open the tap.
3. Put the power plug into the socket.
4. Take out coins and other sundries and shake off mud and sand on the clothes.
5. Press "Power" on. Select the wash program according to the fabric type.
6. Determine water level. Press " Water level" button to select the water level.
7. Press " Start/Pause" button. The washing machine will go into operation by standard automatic program.

CONTROL PANEL DESIGN



Control panel design

Delay

Before start program, press the button to preset time of beginning, 1-24 hours optional. When the preset time is executing, press the button to check the current setting.

Water level

Press the button, by washing quantity select water level position in reason. The indicator lights move at each press on the button, and light and flash in turn.

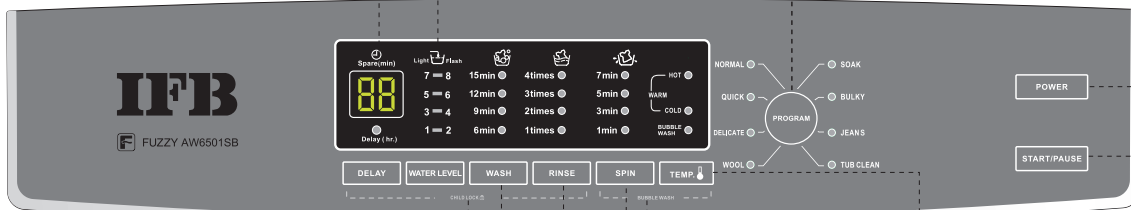
Program

Press the button to select corresponding program.

NORMAL SOAK
 QUICK BULKY
 GENTLE JEANS
 WOOL TUB CLEAN

Power

- On or off power
- Automatic power off



Child Lock

- Press the “delay” and “rinse” at the same time to lock buttons on control panel.
- Press the “delay” and “temperature” at the same time again to unlock buttons.

Function selection

- Press the button to select single function like “Wash”, “Rinse” or combined function of them.
- For detail, refer to “ Self-selecting program”.

Temperature

Press the button to set the wash mode of injection HOT or COLD water for wash. When the lights of HOT and COLD are light at the same time, the HOT water and COLD water are injecting. Press the button you can select HOT, COLD and WARM water to be used.

Start/Pause

- After program selection, press the button to start.
- During operation, press the button to pause, and press the button again, the program continues till the program is finished.

-Please read "Additional explanation".

* If the drawing is changed, no information anymore.

⚠ To protect the control panel, the interval time of power on and off should be not less than 30 seconds.

MY WASH FEATURES



My wash features

The Washing machine allows you to create your own program timing and features with its unique 'My Wash' feature.
The below chart guides you the time ranges, that you may want to suitably choose.

Course / Program	Normal	Quick	Delicate	Wool	Soak	Bulky	Jean	Tub clean
Wash time (minutes)	0 - 15	0 - 15	0 - 15	○	○	0 - 15	0 - 15	○
Rinse (time)	0 - 4	0 - 4	0 - 4	○	○	0 - 4	0 - 4	○
Spin time (minutes)	0 - 7	0 - 7	0 - 7	○	○	0 - 7	0 - 7	○

Notice

1. Wash time displayed that is from 0 to 15 minutes
2. No of Rinses are displayed that is from 0 to 4
3. Spin time displayed that is from 0 to 7 minutes (excluding the drain time duration 2 minutes)
4. The fourth 7 segment display gives the Total program time. (The total program time is the sum of Wash time, time taken to execute the selected no of rinses and the spin + drain time)

Create your own features with 'My Wash' option

a) Pre Wash

If clothes are heavily soiled / stained etc, we recommend a separate pre Wash cycle by using My Wash Option

To select 'Pre Wash'.....

1. Choose the Program of your choice as per the above 'My Wash' chart
2. Press the 'Wash' button on the panel and select the required pre wash time duration
3. Press 'Rinse' button until it gets cancelled
4. Press 'Spin' button and select '1 min' spin duration
5. Press the 'Start' button for Pre Wash program
6. At the end of Pre Wash, now select the main program and run.

b) Add clothes

Sometimes you need to put some more laundry in your washing machine after the start of the program. Add clothes an option allows you to add the laundry and then suitably increase the wash time.

To select 'Add clothes'.....

1. Press the 'Pause' button
2. Open the lid and add clothes
3. Change the 'Wash' time suitably
4. Close the top lid and press the start button

MY WASH FEATURES



c) "New clothes Wash" / "Fragrance Wash"

You can now Wash the new clothes or give fragrance to cupboard stored clothes by washing them without detergent by using 'My Wash' option

To Select "New clothes Wash" / "Fragrance Wash"

1. Choose the Program of your choice as per the above 'My Wash' chart
2. Press the 'Wash' button on the panel and select the required wash time duration
3. Press 'Rinse' button until it gets cancelled
4. Press 'Spin' button and select suitable spin duration
5. Press the 'Start' button for New clothes wash / Fragrance Wash program

d) Additional Rinse

You can select an extra Rinse as per the above 'My Wash' table, this lessens the risk of sensitive skin being affected by detergent residues confirmed on the textiles after normal Rinse. We recommend this option for Babies clothes.

To select 'Additional Rinse'.....

1. Choose the Program of your choice as per the above 'My Wash' chart
2. Press the 'Rinse' button to increase the no of Rinses suitably.
3. Press the start button for the wash program with additional Rinse.

e) Rinse hold

At times, when one runs program and is not able to take out the clothes from the drum soon after the spin, the clothes will get a damp smell and tend to crease. The Rinse hold option suspends the clothes in water till you return home. You then select the exclusive spin option and drain out the water.

To Select 'Rinse hold'....

1. Choose the Program of your choice as per the above 'My Wash' chart
2. Press 'Spin' button till it gets deselected
3. Press the start button

To Release 'Rinse hold'.....

1. Press the POWER button
2. Select the default 'Normal Program'.
3. Press the spin button and choose the spin time as per the above 'My Wash' chart. (Wash and Rinse to be cancelled)
4. Press the 'Start' button.

f) Tub dry

At the end of the program cycle, it is recommended to dry the tub by spinning it for suitable time. This avoids dampness in the tub, keeps it free from bacteria.

1. At the end of the program cycle, remove the clothes from the drum.
2. Select the default 'Normal' program
3. Cancel 'Wash' and 'Rinse' by My Wash option
4. Press the 'Start' button.

AUTOMATIC PROGRAM



Automatic program

Fully Automatic Program

Program	Features and usage	Wash time (minutes)	Rinse times	Spin time	Total time (about)
Normal	Normal program, suitable to wash clothes in spring, autumn, and winter.	12 minutes	two times	5 minutes	43 minutes
Quick	Wash time is short. Suitable to wash light stained clothes.	6 minutes	one time	1 minute	12 minutes
Delicate	Delicate water flow, and spin in low speed.	12 minutes	two times	1 minute	38 minutes
Wool	Suitable to wash wool clothes and other such fabrics.	Soak 20 minutes + wash 15 minutes	two times	1 minute	57 minutes
Soak	Include soak wash	Soak 20 minutes + wash 12 minutes	two times	5 minutes	63 minutes
Bulky	Heavy water flow, and suitable to wash bulky clothes.	Soak 10 minutes + wash 6 minutes	three times	3 minutes	53 minutes
Jean	Delicate water flow, and can not select "1-3" water level.	Soak 20 minutes + wash 12 minutes	two times	7 minutes	65 minutes
Tub clean	this program is special for the tub clean	5 minutes	one time	3 minutes	24 minutes

Note:

The total time included the time of entering water and the drain time. It can affect the total time that is the pressure of the tap water in your family and the drain speed.

Additional explanation

- "Bulky" is a performance(energy consumption, wash ratio etc.) test program.
- During the process of soak, the machine does not stop completely. The machine wash intermittently automatically to let the laundry and detergent mixed more thoroughly.
- Press the "spin" and "temperature" at the same time to choose "bubble wash", the bubble generator will produce a lot of bubbles during the washing time, meanwhile these bubbles explode in the water which can strengthen the washing effect enhance wash efficiency and also make the twist of the clothes less.

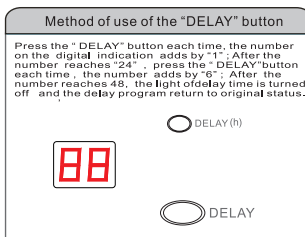
OPERATION METHOD



Delay time program

Delay time means the preset beginning time of washing.

- Switch on the power .
- Turn on the tap and lay the drain hose.
- Put in the laundry and detergent.
- Select the proper water level according to the quantity of clothes.
- Select the desired functions and programs.
- Press "DELAY" button to select the time which you want to start the machine.
- Close the lid and press "START/PAUSE" button



Confirmation of the delay and inspection

- After the delay function is started, the corresponding delay light will flash, and other lights are turned off.
- After the delay function is started, press "Delay" button continuously, you may inspect the preset program and function. Loose the button, the program return to delay status.

Cancel the delay time, or alternate the delay time

- Press "Power" button to cancel the delay time.
- To change the delay time, cancel the delay time first, and then press "Delay" button to reset.

Use the cleaning solution for twice

- Put the laundry in the first batch and wash powder and press "Function" button to set single "wash" to run.
- Take out the laundry in the first batch after hearing the buzzing sound.
- Put in the laundry in the second batch, and run "Wash", "Rinse", "Spin".
- Take out the laundry in the second batch after hearing the buzzing sound.
- Put in the laundry in the first batch and press "Function" button to run "Rinse" and "Spin".

Pre-wash of dirty clothes

As for seriously stained clothes, can select "rinse", "Spin" program to perform pre-wash and then add detergent to select other programs to wash.

Blanket wash

Weight of the blanket should be under 4 kg. And use "Jeans" program to wash. The washing method is as below:

- Use warm water(under 50 °c) to dissolve the detergent, and then pour the solution to the tub.
- Fold the blanket as described below, and put the blanket into tub.
- Power on the machine. Press the "Program" button to choose "jeans" program. And set the water level to "6" or "8" level.
- Press the "Start/Pause" button, and close the lid.
- After rinsing, dry the blanket naturally in well-ventilated, and sunshine environment.

Note:

- Do not use water above 50°C to prevent plastic deformation.
- If the actual water level does not reach the set water level during operation, the washing machine will inject water automatically, and sunny area



Fold in two by the long side



Fold three times in the same direction



Roll up the blanket.



Put it into the wash tub with the edge downwards

OPERATION METHOD



Laundry volume and detergent dosage reference

Water level	Water volume	Weight of laundry	Concentrated washing powder (Each 6 g needs 1L of water)	Common synthetic detergent (Each 1 g needs 1L of water)	Concentrated liquid detergent (Each 0.6 ml needs 1L of water)
8	About 48 L	<6.5kg			
7	About 40 L	4.2~4.6kg			
6	About 36 L	3.5~4.2kg			
5	About 32 L	2.8~3.5kg			
4	About 28 L	2.0~2.8kg			
3	About 24 L	1.2~2.0kg			
2	About 20 L	0.8~1.2kg			
1	About 16 L	<0.8kg			

Notes:

- It is recommended to use low or mid foam powder.
- Detergent dosage is different for different kind of wash programs.
- Water volume varies due to clothes variety. When washing machine does not run properly, please adjust clothes volume or water level.
- The water volume above listed is based on normal clothes volume.

Weight standard of clothes

Union suit including coat and trousers (blended) about 800g	Pyjamas including coat and trousers (cotton) about 500g	Long sleeves shirt (blended) about 200g	Short sleeves shirt (cotton) about 130g
Bed sheet (cotton) about 500g	Bath towel (cotton) about 300g	Trunks (cotton) about 50g	Socks (blended) about 50g

Washing tips

- Put the easily damaged and loose clothes into mesh before washing.
- Put bulk clothes and easily suspended clothes at the bottom of tub.
- Turn over the easily damaged face of clothes before washing.
- If the clothes hold webbing and zipper, you need to tie and zipper that before washing.
- Get rid of mud on clothes before washing.
- You can add some washing powder on the specially dirty place before washing.

METHOD OF MAINTENANCE



Method of maintenance

After the whole washing program	Maintenance
<p>The Washing machine will beep at end of every program operation to remind you of taking out the load or going on with other operations.</p> <p>After finishing washing, please turn off the tap and pull out the plug in case of water leakage or of fire accident</p>	<p>Use gentle clothing to wipe off the water and dirt on the surface after every wash. Detergent, propellant and other chemicals are not allowed to use so as to avoid any damage to the plastic accessories.</p>
Clean the water inlet	Clean Of the filter
<p>After repeated usage, the water inlet mesh bag may be blocked with smudginess, and should be cleaned according to the following steps:</p> <ol style="list-style-type: none"> Switch on the power, followed by turning off the tap. Let the washer works for 5 seconds so that water flows into the tub through the water inlet hose, then turn off the power. Take off the water inlet hose and clean the mesh bag, then restore the water inlet assembly. 	<p>After using the washing machine for a period, please clean it according to the following steps:</p> <ol style="list-style-type: none"> Take out the lint filter. Turn the mesh bag outside and wash it clean in the water. Restore it and refix it.

TROUBLE SHOOTING



Trouble shooting

Exceptional phenomenon	Cause	Solution
No indication on controller	The power plug is not plugged tight. The power switch is not switched on. Have not pressed "Start/Pause" button. Power cut	Re-plug the power plug. Check the power socket or change the socket. Press "Start/Pause" button. Wait for power supply.
Water inlet hose leakage	Have not correctly connected the tap with universal connector. Have not screwed the nut of the water inlet hose tightly.	Re-install rightly the universal connector. Screw the nut tightly.
Does not drain	The drain hose is not laid down or laid too high. The drain hose is twisted or jammed.	Lay the drain hose properly as per lower drain hose or upper drain hose. Smooth the drain hose.
Does not inject water	Water supply stop. Have not turned on the tap. The water inlet mesh is blocked.	Wait for water supply. Open the tap. Clean the mesh according to the method of "Cleaning of the water inlet".
Spin stops and water inject begins in the course of spinning.	The wash material is uneven.	This is automatic rectification for spinning during washing program. That washing materials are too much or too little, or that the washing machine is not placed uneven will cause unbalance in time of spinning.
Does not spin	Open the lid in course of rinsing.	Close the upper lid.
Intermittent spinning	In order to attain the better spinning effect.	Belong to normal phenomenon
Before using the machine, water exists in the drain hose	Remaining water due to test or experiment in the factory	Belong to normal phenomenon

Note:

- * The washing machine does not work normally when the voltage is lower or too high. Please pull out the plug and wait till the voltage becomes normal.
- * If there is still abnormal phenomenon after checking the above-mentioned points, please pull out the plug and connect with local service center.

OTHER FUNCTIONS



Other functions

● Function of fault alarm

Fault	Cause of fault	Indication	Alarm of the buzzing sound	Stopping alarm
Alarm for water inlet	Water injection for about 16 minutes, but do not reach preset water level	"E1" flashes, and other lights are turned off.	The buzzer goes on buzzing for 6 seconds. If the fault is not solved, buzzes again for 6 seconds in every 16 minutes.	Open the lid to deal with faults, then close the lid to stop the alarm.
Alarm for opening lid	Open the lid after starting the delay time. Open the lid when the washer is spinning. Open the lid when entering into the child lock state.	"E2" flashes, and other lights are turned off.		
Imbalance alarm	Checked imbalance for the third time.	"E3" flashes, and other lights are turned off.		
Drain alarm	If does not finish water drain in 10 minutes of start of spin.	"E4" flashes, and other lights are turned off.		

● Function of automatic power shut off

1. If the machine do not start to work within 10 minutes after powered on, it will power off automatically.
2. After end of operation the buzzer will buzz 6 times and, it will power off automatically.

● Function of adjusting for unbalance

1. If the laundry is placed uneven before spinning, it is likely to cause vibration during spinning. The washing machine has a function of adjusting unbalance. When working, the washing machine always inspects operation state automatically. If the spinning vibration is too great, the washing machine automatically starts the adjusting program to balance.
2. If the washing machine can adjust the unbalance twice. If the adjustment has no function, it will alarm.

● Fuzzy control function

Under the "fuzzy" program, the machine automatically detect amount of laundry, and then select water level automatically. If water exists in the tub when starting operation, the machine cancel "fuzzy" control. If users choose water level before starting operation, the machine cancel "fuzzy control" function

● Power failure memory function

If the power supply becomes off suddenly during operation, the machine remembers the current operation state. When power is on, the machine returns to former operation state automatically.

PRECAUTION



Precaution

Safe use of power

Please use the 5 Ampier special voltage socket to plug in and plug out. Do not use wire extension and multiple plug sockets.



Keep away from dampness

Don't place the washing machine in extreme damp surrounding, as dampness may weaken the insulation of the machine, which may cause electric shock or faults.



Don't use hot water

Don't use hot water over 50°C to avoid deformation of the plastics.



Don't open the lid in time of spinning

Do not open the top lid during spinning as it shortens the machine's life.



Avoid spray of water

Don't let the water spray in to the switch or on the control panel as it can cause electric cause.



Keep away from smoke and fire

Don't place lighted candles, cigarettes and thermos nearby to avoid fire accidents or deformation of the plastics.



Don't damage power cord

While taking out the plug do not pull the cord.



Safety for people

Keep ur kids away from machine during whole wash cycle. Do not keep stools & chairs close to machine.



SPECIFICATION



Specification

Size	515X525X905(mm)	Weight of the product	31kg
Rated input power	340W	Rated capacity of wash and spinning	6.5 kg(dry clothes)
Rated voltage	230V~	Maximum water pressure permitted in the water inlet	0.6Mpa
Rated frequency	50 Hz	Minimum water pressure permitted in the water inlet	0.1Mpa