

HTC Fetch™
BL A100
User Guide

htc

<http://www.htc.com/support>

Trademarks and copyrights

© 2013 HTC Corporation. All rights reserved. HTC, the HTC logo, and HTC Fetch are trademarks of HTC Corporation. All other trademarks included herein are the property of their respective owners.

The Bluetooth and Bluetooth Smart word mark and logos are trademarks owned by Bluetooth SIG, Inc.

Google and Google Maps are trademarks of Google Inc.

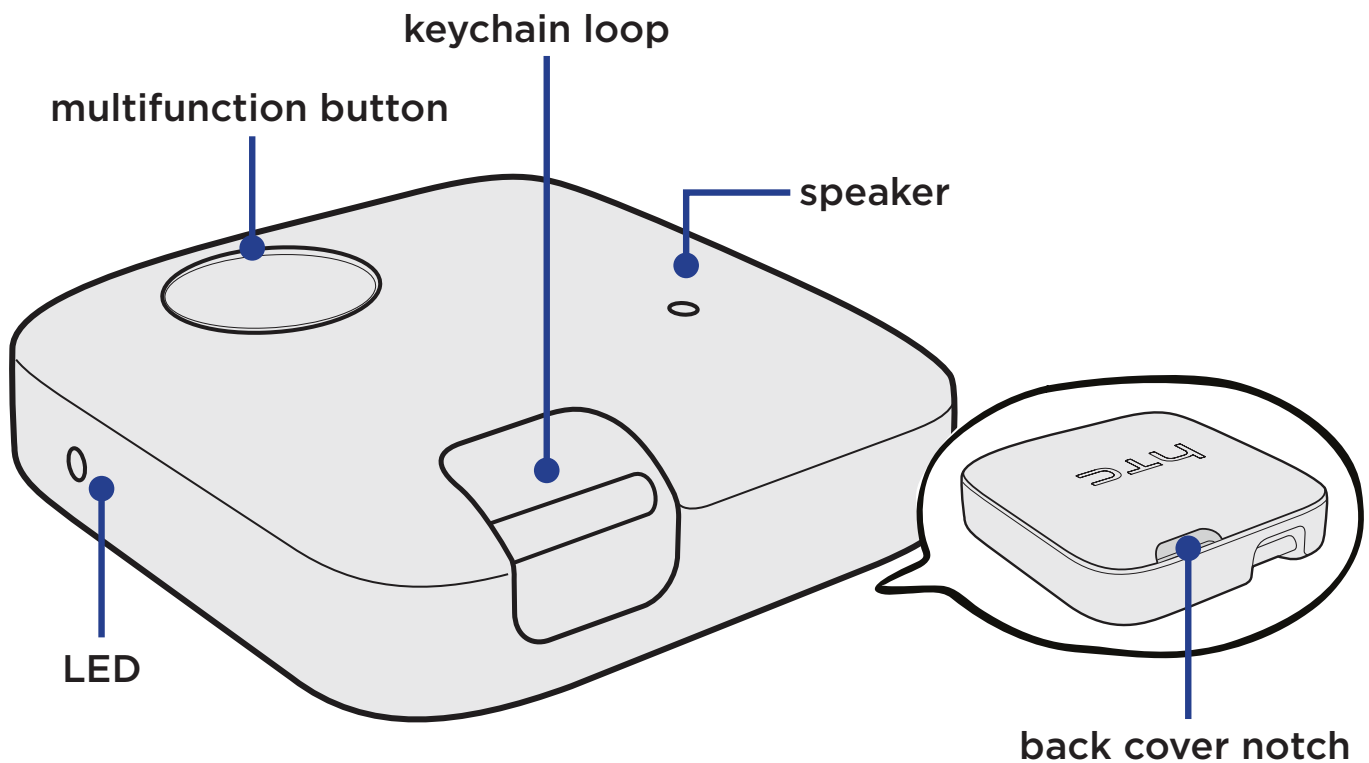
Windows is a registered trademark of Microsoft Corporation in the United States and other countries.

HTC shall not be liable for technical or editorial errors or omissions contained herein, nor for incidental or consequential damages resulting from furnishing this material. The information is provided “as is” without warranty of any kind and is subject to change without notice. HTC also reserves the right to revise the content of this document at any time without prior notice.

No part of this document may be reproduced or transmitted in any form or by any means, electronic or mechanical, including photocopying, recording or storing in a retrieval system, or translated into any language in any form without prior written permission of HTC.

About your HTC Fetch

Your HTC Fetch is a *Bluetooth*® Smart device that helps you to easily locate your misplaced phone or find valuables you attached an HTC Fetch to with your phone.

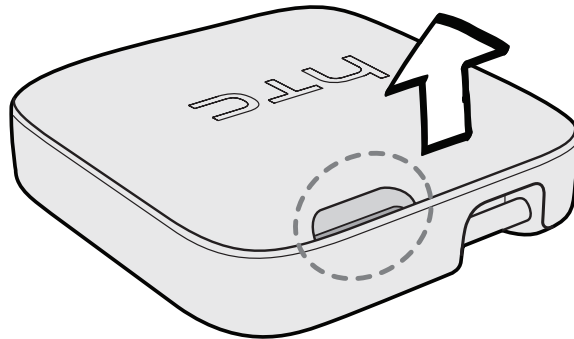


IMPORTANT: Signal strength varies depending on your environment. When indoors, effective range may be less than the maximum range.

Removing the battery film

Before using HTC Fetch, you'll need to remove the battery film.

1. Open the back cover from the notch on the edge.



2. Remove the battery and film.
3. Reinsert the battery. When the battery is inserted, HTC Fetch will power on automatically.
4. Align the back cover hooks and press the back cover until it clicks in place.





Pairing your HTC Fetch

You can connect up to three HTC Fetch devices to certain HTC phones that are Bluetooth Smart Ready.

1. Turn on your HTC Fetch. (See Using HTC Fetch)
2. On your phone, turn on Bluetooth.
3. Tap **Bluetooth**, and under “Available devices” tap **HTC Fetch** to pair your HTC Fetch.

Note:

- If you have more than one HTC Fetch, rename your HTC Fetch to something descriptive such as “keys” so you’ll know what your HTC Fetch is attached to. In the Bluetooth settings, tap  > **Rename** next to the HTC Fetch you want to rename.
- HTC Fetch can only be paired with one HTC phone.
- When HTC Fetch has paired with your phone, a shortcut  will be created on your Home screen (or All Apps screen if your Home screen is full). Tap the shortcut to quickly access the Bluetooth settings screen.

Resetting your HTC Fetch

If you want to use your HTC Fetch with another HTC phone, you’ll need to reset it. Just press and hold the multifunction button for 10 seconds.

Using HTC Fetch

HTC Fetch has a single multifunction button that you use to turn it on and off, activate the phone alert, and more.

Power on or off	Press and hold for four seconds.
Activate the phone alert	Press once. Press again to cancel.
Take a photo	Press once (while using the Camera app).

Notifications

Power on	One beep and green LED flashes (red LED flashes when battery power is less than 5%).
Power off	Two beeps and red LED flashes.
Phone out of range	Continuous beeping for 60 seconds.
Find your HTC Fetch	Continuous beeping for 30 seconds and green LED flashes for 60 seconds.

Finding your HTC Fetch


When you attach HTC Fetch to something (such as your keys, bag, etc), you'll have the assurance that you'll have a starting point to track down your lost valuables.

1. On your phone, go to the Settings and tap **Bluetooth**.
2. Tap  next to the HTC Fetch you want to find.
3. Tap **Find [name of HTC Fetch]**.

Tip:

You can use the signal strength indicator to see if you are getting closer to your HTC Fetch. The signal strength bars are next to "Paired Bluetooth devices".

If your HTC Fetch is not in range, you may be able to find out the last location before your phone lost contact with it.

1. On your phone, go to the Settings and tap **Bluetooth**.
2. Tap  next to the HTC Fetch you want to find.
3. If a last known location is available, tap **Last Seen** to view it in map app. (only on HTC phones with Android OS).

Note:

If HTC Fetch is disconnected from your phone, you'll receive an email notification sent from your default account in the HTC Mail app.


Finding your phone

Misplaced your phone? HTC Fetch will start to beep when your phone is out of range. On your computer, check the email account you set as the default email account in the HTC Mail app on your phone. If your phone had a network connection at the time HTC Fetch was disconnected, you should have an email notification.

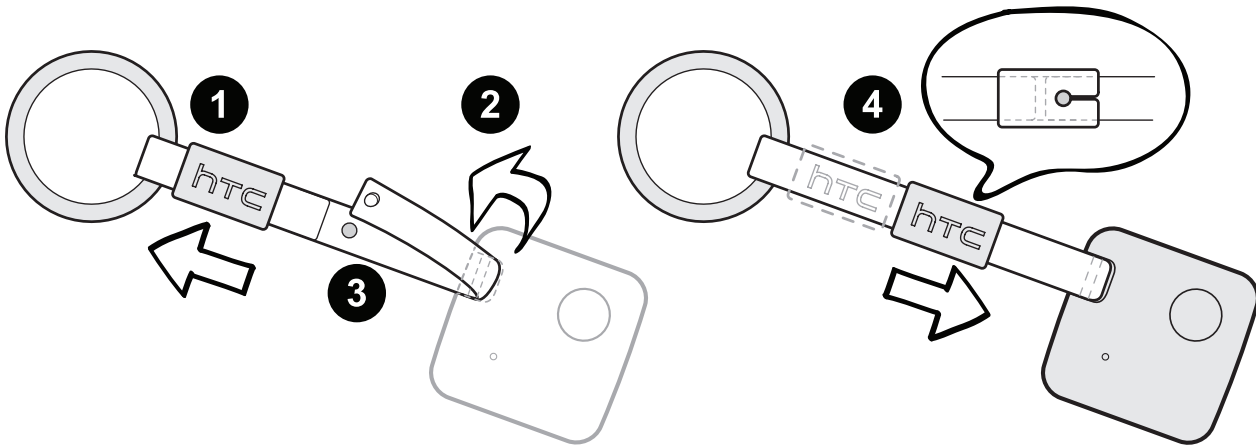
Replacing the battery

HTC Fetch uses a standard CR2032 coin battery. The battery will last approximately six months when HTC Fetch is on stand-by. When you need to replace the battery, you'll receive a notification on your phone. (See Removing the battery film)

Tip:

To check the battery power, go to the Settings and tap **Bluetooth**. Tap  next to the HTC Fetch you want to check. The battery power information is just below "Paired Bluetooth device".

keychain





91H0xxxx-xxM Rev.A

htc.com
