

SERVICE GUIDE

KYESYSTEMS CORP.



SP-i160

Revision History

Version	Date	Change
1.0	15/01/2010	

Table of Contents

Revision History	2
Table of Contents	3
Getting Started	4
Conventions Used in this Guide	4
Safety Precautions	4
Chapter 1. How to Handle Defective Returns.....	5
1.1 Overview	5
1.2 Problems	6
1.2.1 No sound (Line in jack no function)	7
1.2.2 Power LED (indicator) no light.....	8
1.2.3 Li-ION battery can't charge.....	8
Chapter 2. Specifications	9
Chapter 3. Block Diagram	10
Chapter 4. Exploded View	11
Chapter 5. Part List	12
Chapter 6. Schematic Diagram	13
Chapter 7. Important Notes	14
7.1 Packing Requirement for Sending the PCB Assembly by Post	14
7.2 Short of Spare Parts while Repairing a Speaker System	14

Getting Started

Conventions Used in this Guide

Pay Special Attention : Instructions that are important to remember and may prevent mistakes .

Caution : Information that, if not followed, may result in damage to the product .

Safety Precautions

The following precautions should be observed in handling the speaker Described in this guide :

Place the speakers on a flat, level and stable surface.

Do not place the speakers in environments subject to mist, smoke, vibration, excessive dust, salty or greasy air, or other corrosive gases and fumes.

Do not drop or jolt the speakers.

Do not allow anything to drop into the subwoofer case through its ventilator, as it could result in fatal electric shock or fire .

Place the unit far enough from other equipments for good heat dissipation .

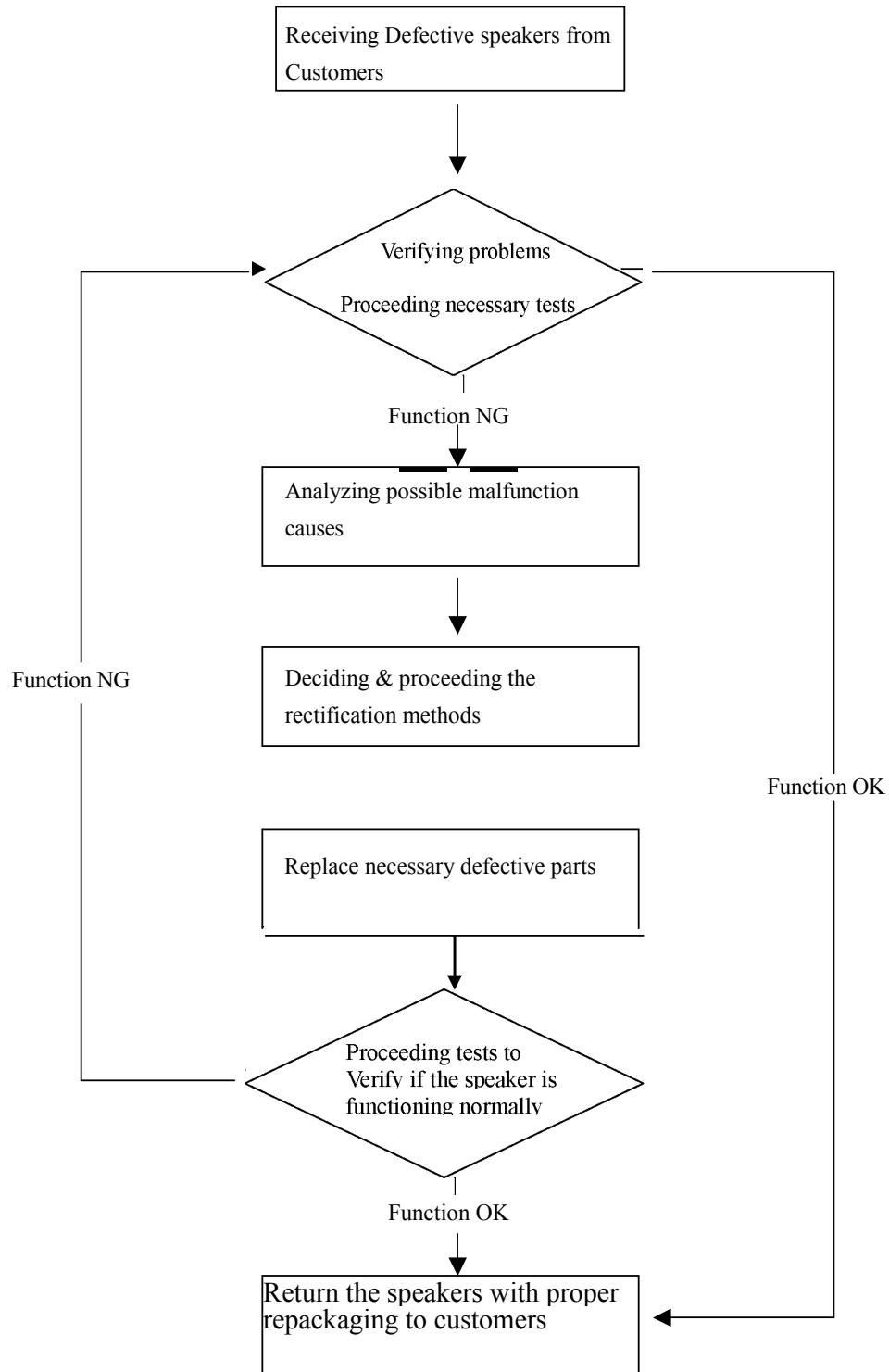
Disconnect the AC power cord from the AC outlet before performing any maintenance on the speakers .

Do not perform any maintenance with wet hand .

Prevent foreign substances, such as water, other liquids or chemicals , From entering the speakers while performing maintenance procedures on the speakers .

Chapter 1. How to Handle Defective Returns

1.1 Overview



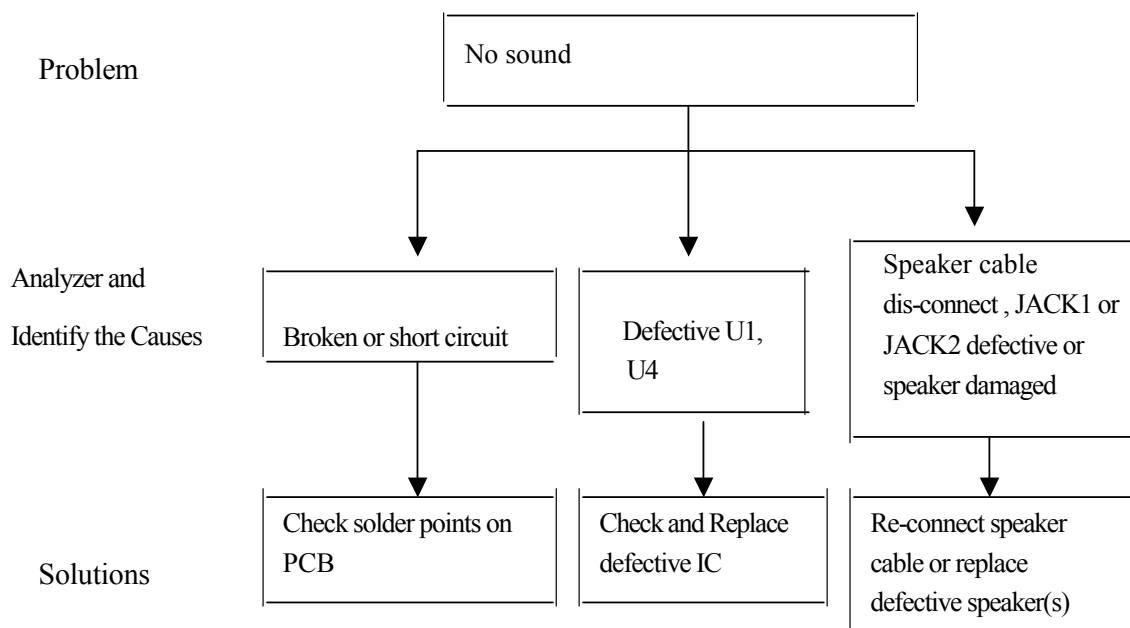
1.2 Problems

Item	Problem Description
1.2.1	No sound (Line in jack no function)
1.2.2	Power LED (indicator) no light
1.2.3	Li-ION battery can't charge

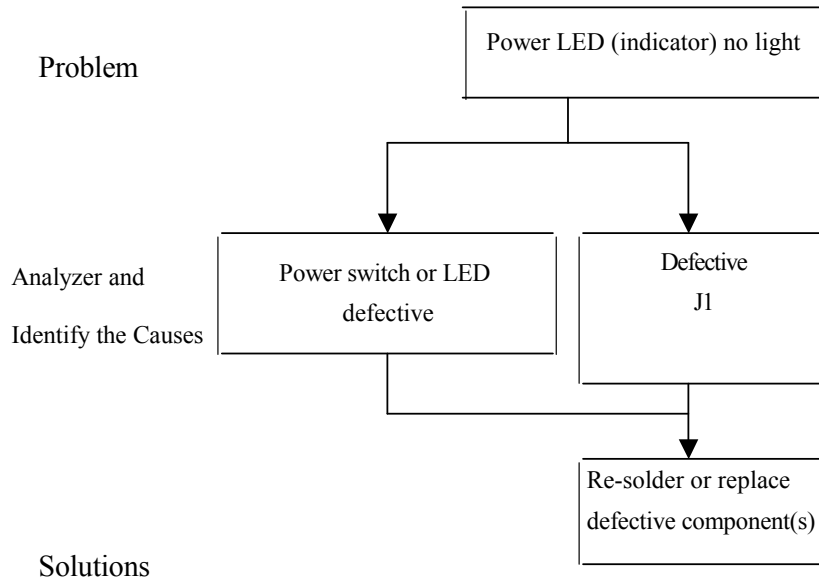
Attention

Please follow the numbered sequence marked within parenthesis given in individual Flow chat, in that this is the best-recommended sequence to rectify the problems.

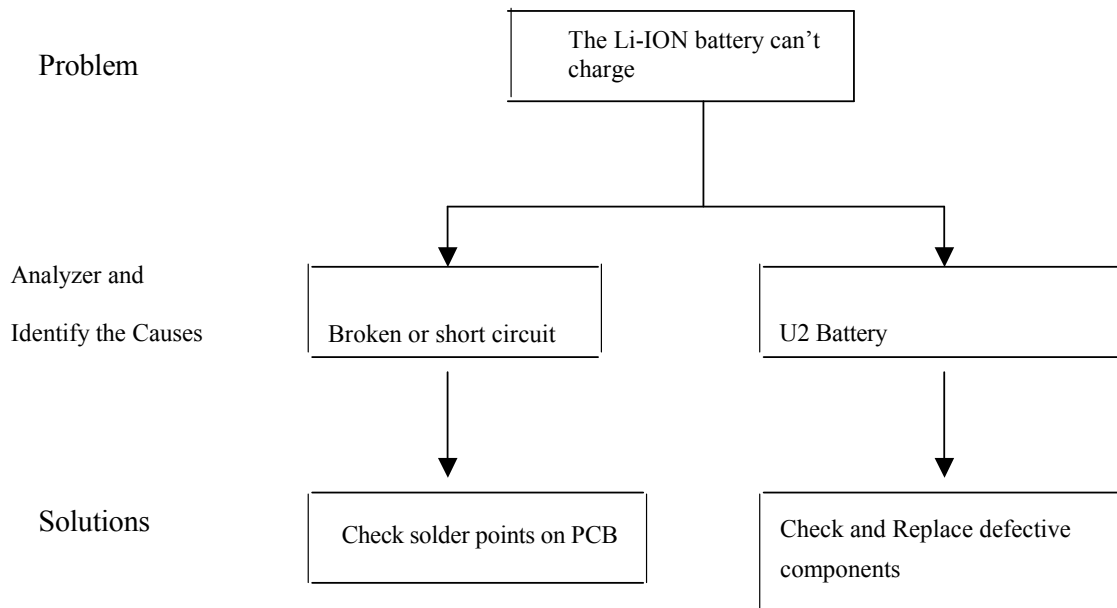
1.2.1 One or more channels no sound (Line in jack no function)



1.2.2 Power LED (indicator) no light



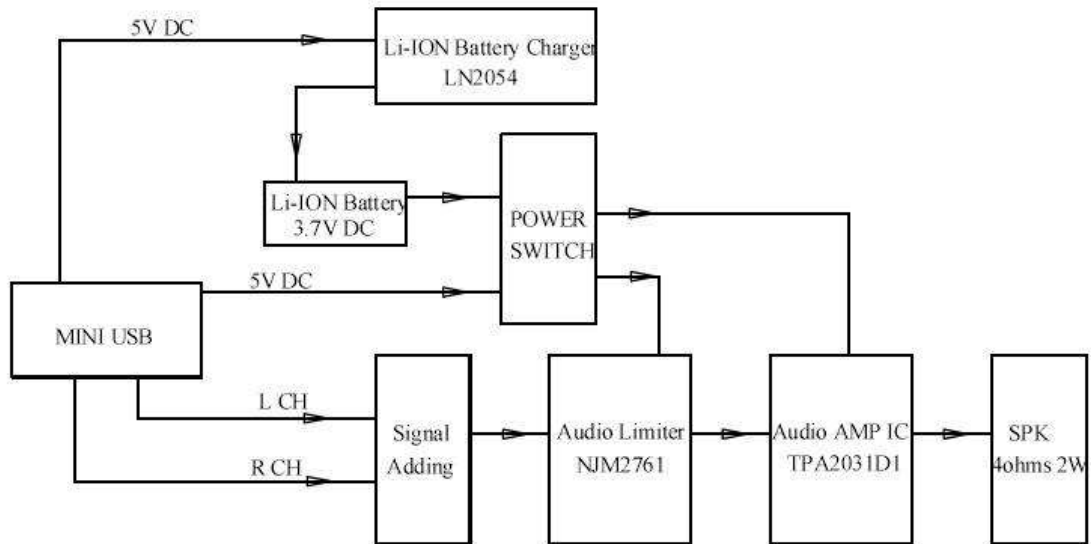
1.2.3 The Li-ION Battery can't charge



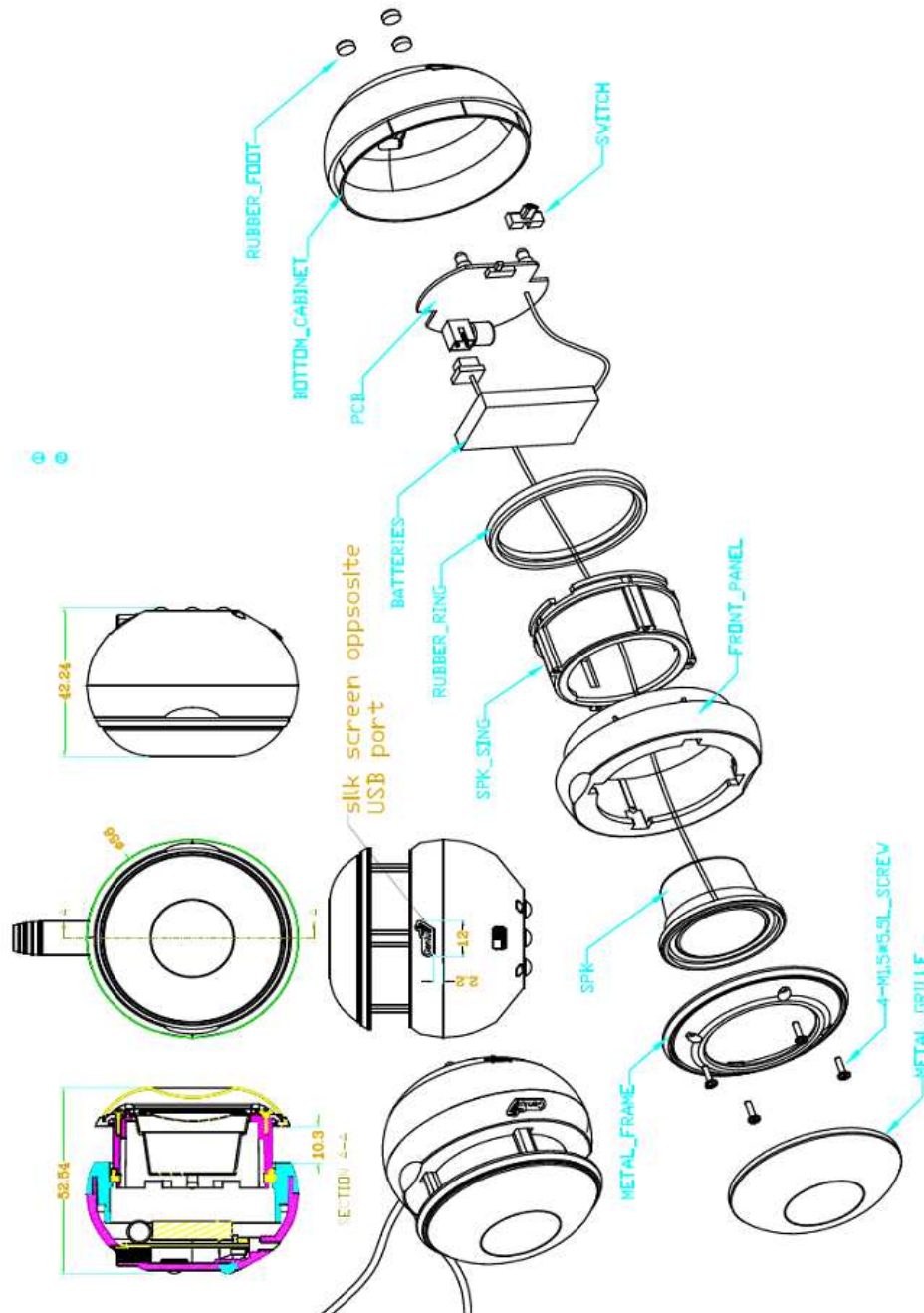
Chapter 2. Specifications

NO.	Description	Unit	Specifications
1	Out Power at THD 10%	W	≥ 1.8
2	Sensitivity	mV	600 ± 50
3	Freq. Response (1KHz -3dB)	Hz	$180 \sim 20K \pm 10\%$
4	Separation	dB	≥ 40
5	S/N ratio	dB	≥ 80
6	Hum & Noise (Vol.: max)	mV	≤ 2

Chapter 3. Block Diagram



Chapter 4. Exploded View

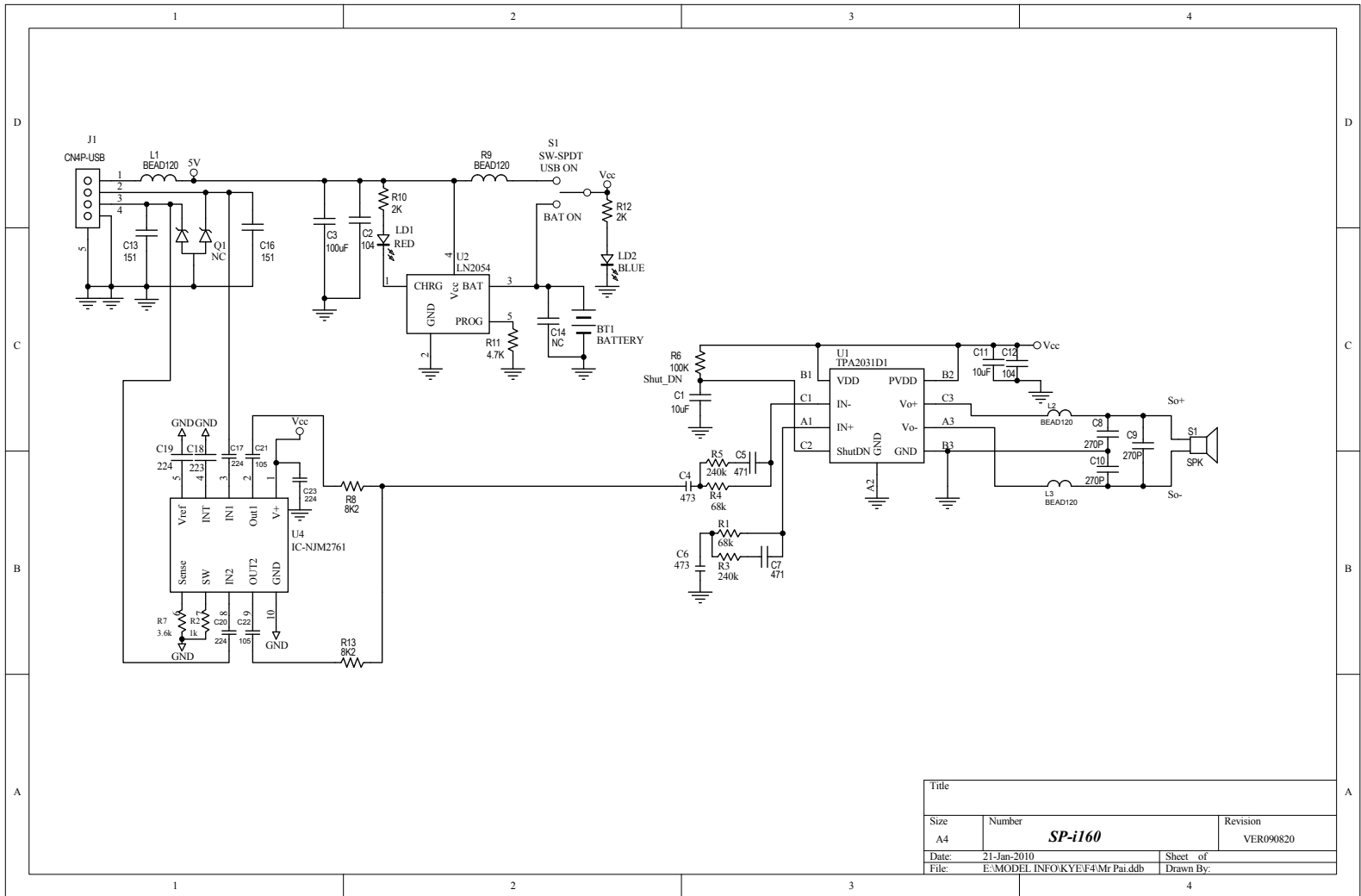


Chapter 5. Part List

No.	DESCRIPTION	Qty	UNIT	Part No.
1	RS,ASM,SP-I160,HOST,BLACK	1	PC	31730952100
2	RS,ASM,SP-I160,HOST,WHITE			31730952101
3	Loud Speaker 1.25" 4 ohm 1~2W	1	PC	FSA510112-1402
4	Rubber Pad(Φ4.8 X 2.3T), SP-i160	3	PC	15400009100
5	PCBA, SP-i160	1	PC	ASL507003-0026
6	IC, JRC NJM2761	1	PC	
7	IC, T1 TPA2031D1	1	Set	RCI203101-0001
8	IC, LN,LN2054	1	PC	
9	BATTERY, SP-i160	1	PC	FBY508037-0003
10	FANNEL BAG SP-i160	1	PC	12290076100
11	S/N LABEL SP-i160	2	PC	12061017100
12	CARD SP-i160 / B	1	PC	12020186100
13	CARD SP-i160 / W			12020187100
14	INNER TRAY SP-i160	1	PC	12150227100
15	PET BOX, SP-i160	1	PC	12140001100
16	Anti-fake Label (on Gift Box)	1	PC	12061993100
17	Carton, SP-i160	1/50	PC	12100465100

Chapter 6. Schematic Diagram

Pls refer to next page



Title		
Size	Number	Revision
A4	SP-i160	VER090820
Date:	21-Jan-2010	Sheet of
File:	E:\MODEL.INFO\KYE\F4\Mr.Pai.ddb	Drawn By:

Chapter 7. Important Notes

7.1 Packing Requirement for Sending the PCB Assembly by Post

PCB assembly is a kind of sophisticated electronic circuit board. Well packing will be required when sending them by post.

* Some sophisticated IC components are mounted on the PCB assembly, hence it is necessary to pack each PCB assembly with a separate static protecting bag, in order to avoid static electricity.

* Reliable external packing is also very important when sending PCB assembly by post, in that it would avoid unnecessarily lost or damage.

7.2 Short of Spare Parts while Repairing a Speaker System

If you are short of spare parts when you have some speaker systems waiting to be repaired, it would be recommended to take the necessary parts from one speaker system, so that you may have the as many speaker systems.