



By Appointment to
Her Majesty Queen Elizabeth II
Suppliers of Commercial Refrigeration
Foster Refrigerator, King's Lynn

EcoPro G2

Cabinet & Counter Models

Controller & Display - Versions FD1-11 & FD1-14

Original Operation Instructions

English



00-556483 August 2016 Issue 7 GB



A Division of ITW Ltd
Foster Refrigerator
Oldmedow Road
King's Lynn
Norfolk, PE30 4JU
United Kingdom

Call: +44 (0)843 216 8800 Fax: +44 (0)843 216 4700 Email: support@foster-uk.com
www.fosterrefrigerator.co.uk



Models Applicable to This Manual

Single Cabinets

EP700F
 EP700G
 EP700H
 EP700H2
 EP700H2BK
 EP700HBK
 EP700HH
 EP700HL
 EP700HSTB
 EP700HU
 EP700HMH
 EP700P
 EP700W

 EP700L
 EP700L2
 EP700L2BK
 EP700LBK
 EP700LL
 EP700LSTB
 EP700LU
 EP700LHM

EP700M
 EP700M2
 EP700MU

G700G
 G700H
 G700L
 G700M
 G700W

Double Cabinets

EP1440G
 EP1440H
 EP1440H4

 EP1440HSTB
 EP1440HU

EP1440W

EP1440L
 EP1440L4

EP1440LSTB
 EP1440LU

EP1440M
 EP1440M4
 EP1440MU

G1440H
 G1440L
 G1440M

Broadway

EP820HU
 EP820LU

Workout

EP820MW
 EP820LW

Counters

EP1/2G
 EP1/2H
 EP1/2L
 EP1/2M
 EP1/2P

EP1/3G
 EP1/3H
 EP1/3L
 EP1/3M
 EP1/3P

EP1/4G
 EP1/4H
 EP1/4L
 EP1/4M

EP2/2H

EP2/3H



Important Note to the Installer:

Please ensure that this document is passed to the user as it contains important guidelines on operation, loading, cleaning and general maintenance and should be kept for reference.

General Electrical Safety

Foster Refrigerator recommends that the equipment is electrically connected via a Residual Current Device; such as a Residual Current Circuit Breaker (RCCB) type socket, or through a Residual Current Circuit Breaker with Overload Protection (RCBO) supplied circuit.

Disposal Requirements

If not disposed of properly all refrigerators have components that can be harmful to the environment. All old refrigerators must be disposed of by appropriately registered and licensed waste contractors, and in accordance with national laws and regulations.

Start-Up and Operation

After unpacking, clean and allow the cabinet or counter to stand for 2 hours before turning on (cleaning directions supplied within this manual). Ensure the cabinet is situated on a firm, level surface away from both hot and cold air sources, as this will affect its performance.

Vaporiser Tray (Dual Temperature Models Only)

On delivery, the tray is attached to the rear of the cabinet. Remove the two fixing screws and slide the vaporiser tray underneath the cabinet, into the two fixed runners.

Bend the corner tabs of the tray upwards, then using the guide holes already in the cabinet secure the tray in position with the two screws originally removed.


The heaters electrical connection to the cabinet will already be in place. Ensure the drain line pipe is angled in an upright position to form an air lock.

Please make sure that when positioning a dual temperature model with an external vaporiser tray the tray does not come into contact with any other surfaces.

Clearance (All models)

Make sure that a minimum clearance of 310mm above and 50mm around the cabinet or counter is available for ventilation and effective operation.

Connect the unit to a suitable mains power outlet and turn the supply on. Please do not plug or unplug the unit with wet hands.

The cabinet will energise briefly showing  followed by the power switch slowly pulsing with a blank display. The unit is now in standby.

Standby

Pressing the power switch for 3 seconds will turn the unit on (the switch backlight is static and the display shows the operating temperature) or into standby (the switch backlight pulses slowly on and off).

As the operating temperature has been preset no adjustments are required. Allow the cabinet to reach its normal/ set operating temperature before loading.

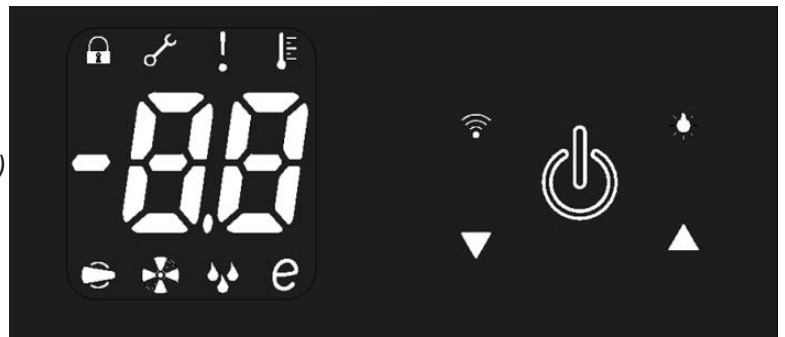


Display Icons and Switches



(Cabinet Version)

Keypad Lock			Warning/ Alarm
Service Mode			Temperature Setting
Compressor Function			Defrost Function
Evaporator Fan Function			Reduced Energy Mode
Data Download Switch			Light Switch
Decrease Switch			Increase Switch
Power Switch			



(Counter Version)

(Some icons or switches are only visible during adjustment, when activated by parameters or through operation/manual selection).

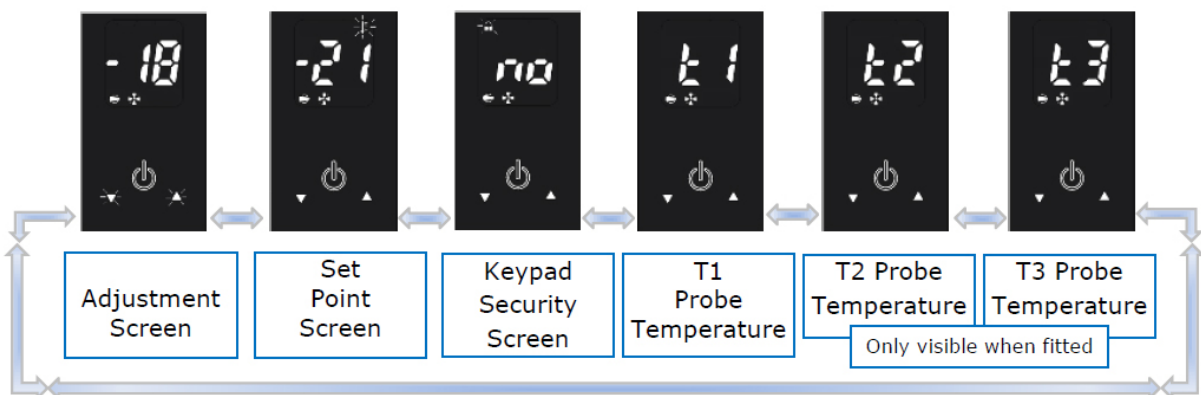
User Adjustment Mode

You are required to enter this mode to make any setup changes.

These include Set Point, Keypad Security and display of T1, 2 or 3 probe temperatures.

Press and immediately release after which the and switches will flash/pulse together.

Press to scroll through the following screens:





To exit this mode scroll back to the adjustment screen and press or wait for 30 seconds and the display will revert to the normal display showing the operating temperature.

Set Point and Other Mode Adjustments

Access the adjustment mode as described above. Using the or switches to scroll to the mode that requires adjustments i.e 'Set Point' this is the minimum temperature the cabinet is allowed to cool down to (the display shows the temperature and flash/pulsing icon).

To adjust this press and release the will show constantly. Adjust the setting with the or switch. Confirm the change by pressing and releasing again, the next mode will automatically show.

Scroll through the modes with the or switch until you return to the adjustment screen and press and release to exit and save.

If at any point the display is left for 30 seconds it will revert to the normal display and no changes will be saved.

Keypad Security Settings

Access the 'Keypad Security' screen as described above.

The screen will show the current status, initially preset to '70', with flashing. Press and release and will show constantly. (If you modify this setting with to show '45' the keypad will be locked, will show constantly and the cabinet will not be able to be put into standby, carry out a manual defrost, adjust temperature set point, download data or switch on/off the units lights. To confirm any change you **must** press again so the next screen 'E I' shows).

Exit any of the 'Adjustment Modes' as described above.

Internal Light (where fitted)

To switch on the lights press and release so that the switch backlight is on continuously.

To switch off press and release and the switch backlight will flash/pulse.

Shelves and Supports

G2 shelving for low, high or meat temperature cabinets consist of two trayslides per shelf. These slot directly into the rear of the cabinet's airduct and have ladder racking to support the front.

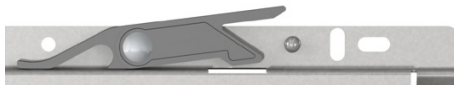
Shelves are the standard wire gastronorm style that slide onto the trayslides. Fish cabinets come with fixed racking and fish bins, wine cabinets with the required bottle racking/holder assembly. Both of these are fitted instead of standard shelving.

Chef and Standard Drawers (on counter models only)



To Remove a Chef Drawer

Pull out the drawer to its full extent. Lift the side release lever upwards (as shown in the 2nd diagram).



With the lever lifted the drawer can be removed from the sliders and the counter.

To Remove a Standard Drawer

Pull out the drawer to its full extent. Lift the drawer body upwards and then retract the drawer body towards you again.

Food

Cover all foods and separate raw and cooked foods to avoid cross contamination.



Loading and Airflow

Ensure that there is no more than 40kg of evenly distribute product placed on or within each shelf or drawer. Always ensure the air can circulate around/through the stored product.

It is important that for optimal energy performance that adequate airflow is maintained around the perimeter of the shelves, and around all stored products.


On all models please ensure that no product is placed on the unit base.

Door & Drawer Lock

To lock the door or drawer insert the key and turn 90°, turn in the opposite direction to unlock.

Defrost

All Foster G2 cabinets are fitted with a fully automatic defrost system to ensure that the evaporator coil remains free from ice during normal use. Melt-water is evaporated using either the heat from the refrigeration system or a separate electric heater (dependent upon model and configuration)

To activate a manual defrost - while the cabinet is in 'run' mode press and hold  for 5 seconds. After 3 seconds the display will go blank then return after a further 2 seconds. At this point a defrost will be performed (subject to underlying operating parameters), this will terminate automatically.

Cleaning and Maintenance

Important: Before cleaning, the unit should be put into standby and then the power supply should be turned off at the mains. Please do not plug or unplug the unit with wet hands. Only when cleaning has been completed and the unit is dry should the cabinet be turned back on at the mains.

Suitable P.P.E (Personal Protective Equipment) should be worn at all times.

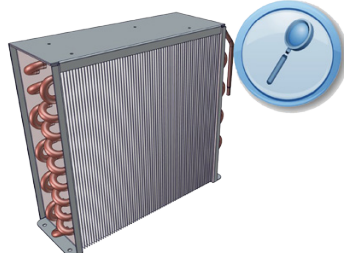
Regular Maintenance:

- > As and when required remove all product and shelving (beware of cold and or sharp components) from the unit. Clean exterior and interior surfaces with mild liquid detergent, following the directions on the pack at all times. Rinse surfaces with a damp cloth containing clean water. Never use wire wool, scouring pads/powders or high alkaline cleaning agents i.e bleaches, acids and chlorines as these may cause damage.
- > All gaskets should be inspected on a regular basis and replaced if damaged. To clean, wipe with a warm damp soapy cloth followed by a clean damp cloth. Finally thoroughly dry.
- > Shelves and their supports can be removed for cleaning. The shelves are dishwasher safe; however the vertical supports should be cleaned with warm soapy water then rinsed and dried.

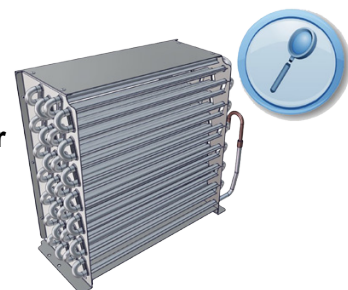
> Condenser Cleaning

Maintenance should take place on a regular basis or as and when required by a competent/trained personnel.

Traditional Fin
Coil



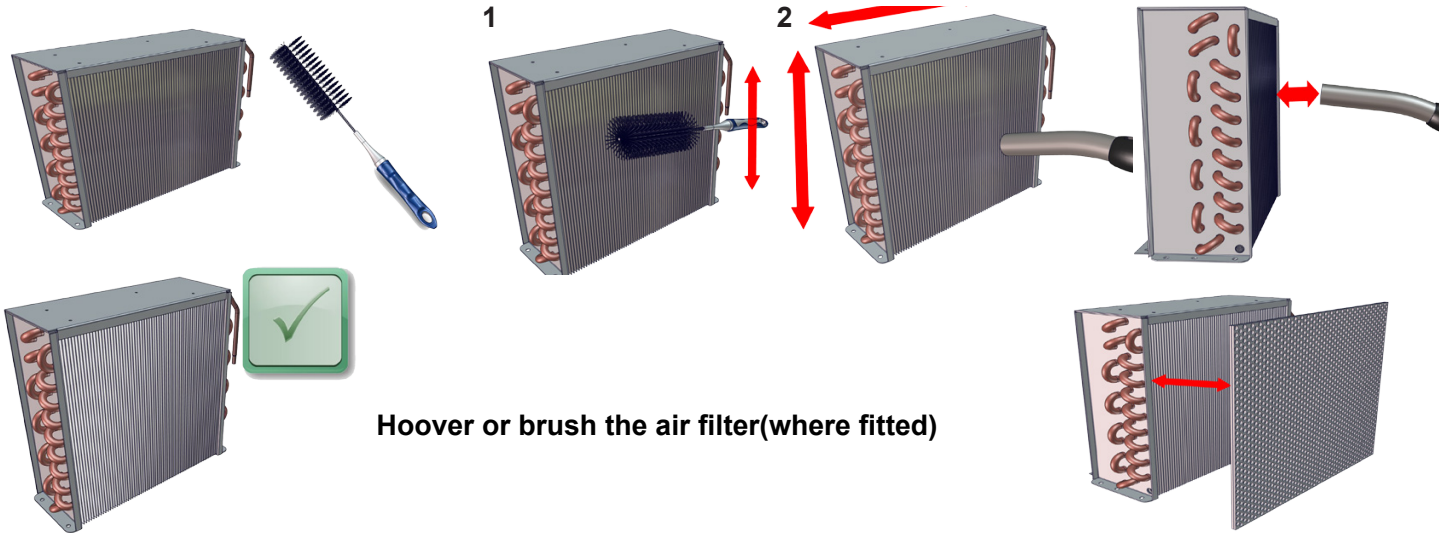
+Stayclear
Coil



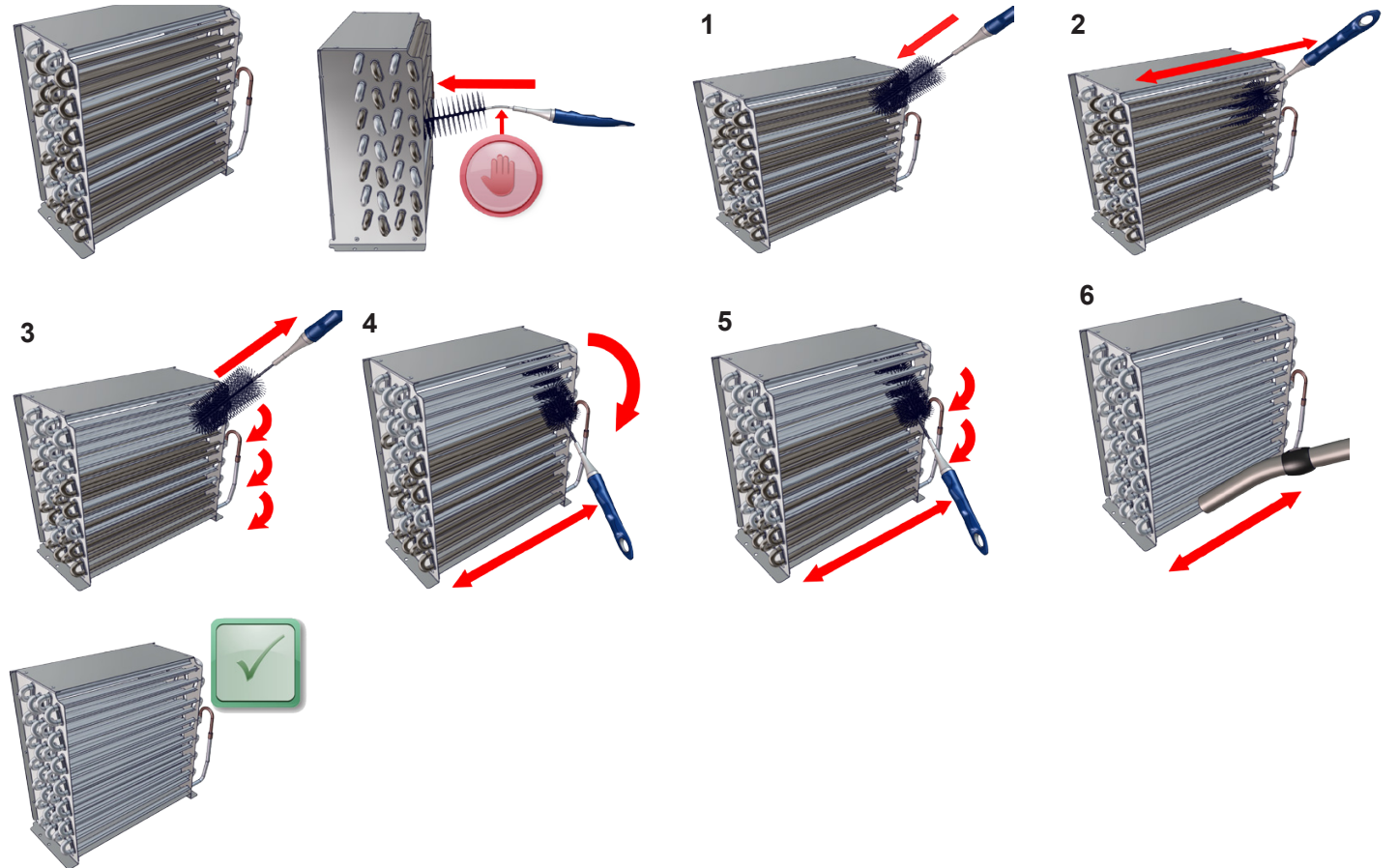


If there are any stubborn grease deposits left on or through the condenser call your supplier to carry out a full service (this is normally chargeable). Failure to maintain the condenser may invalidate the warranty of the condensing unit and cause premature failure of the motor/compressor. Do not use a wire brush to clean the condenser.

Traditional Fin Condenser Coil



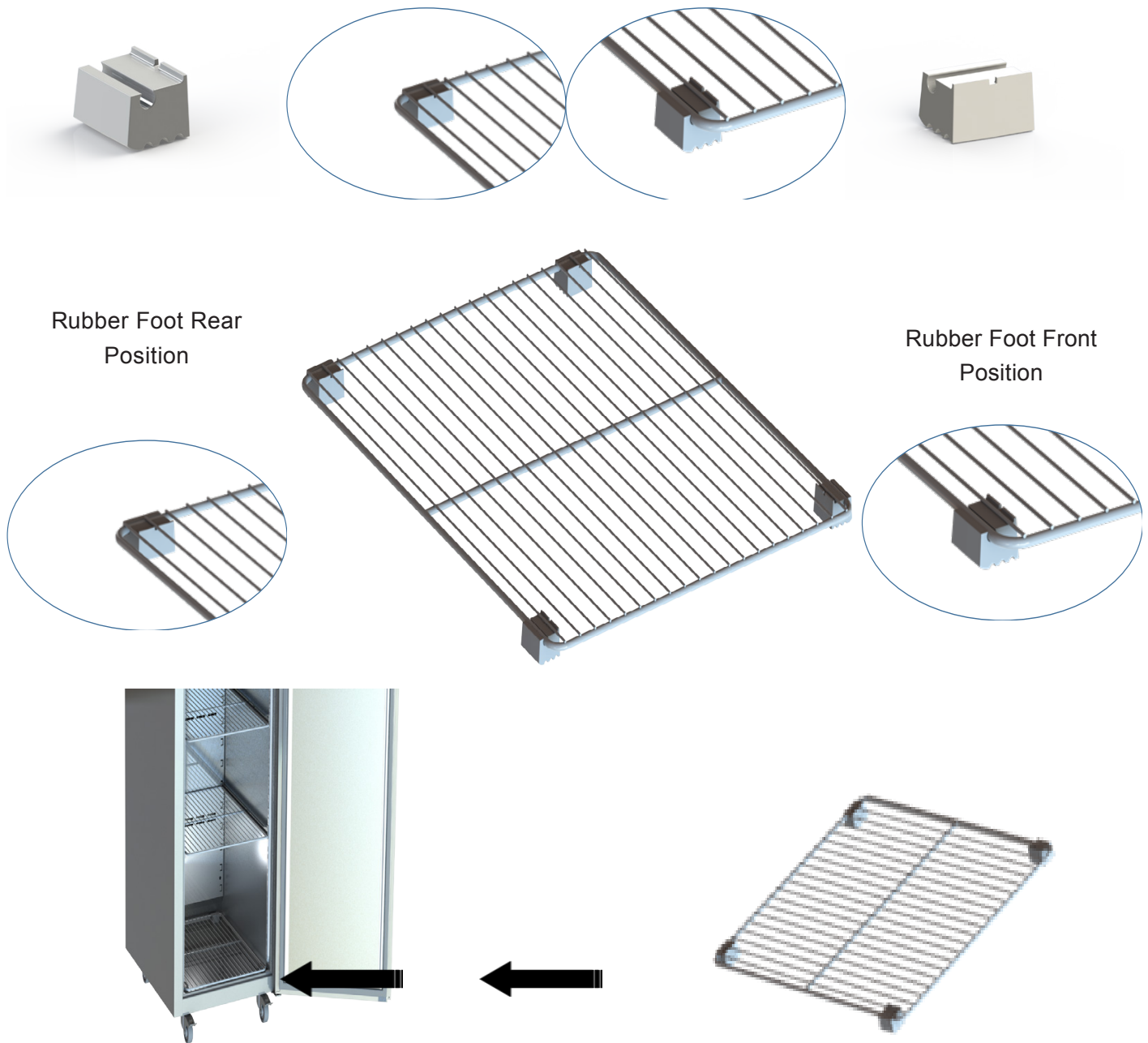
+Stayclear Condenser Coil



Fitting instructions for Rubber Feet

The rubber feet are provided, enabling a shelf to be positioned on the floor of the cabinet.

If this is required simply clip the feet onto the shelf as demonstrated below



After rubber feet are attached place shelf in the bottom of the unit



Troubleshooting

Alarms/Warnings

Low Temperature Alarm	Lo	Condenser Clean Warning #	cl
High Temperature Alarm	hi	Condenser High Temperature Alarm #	hc
T1 Air Probe Failure	E1	High Pressure Alarm #	hp
T2 Evaporator Probe Failure #	E2	Door Open Alarm #	do
T3 Condenser Probe Failure #	E3	Mains Power Failure #	pf

only displayed if applicable to model and enabled through parameters.

Power Failure Warning

'PF' will be displayed, the alarm will sound and ! will show when there has been a mains power failure that has affected the internal air temperature of the cabinet (not applicable to units when in standby mode).

When mains power is restored the cabinet will continue to operate, and adjust the temperature as required.

The warning will sound and show ! until ⏻ has been pressed and released, to cancel the alarm. We would recommend the contents of the unit are inspected.

Before calling your supplier please make sure that:

- The plug has not come out of the socket and the mains power supply is on i.e. is the controller illuminated?
- Check to see if the unit is in standby
- The fuse for the cabinet is intact
- The cabinet is positioned correctly – cold or warm air sources are not affecting the performance
- The condenser is not blocked or dirty
- The products are placed in the unit correctly
- Defrost is not in progress or required

If the reason for the malfunction cannot be identified, disconnect the electrical supply to the unit and contact your supplier. When requesting a service call, please quote the model and serial number which can be found on the silver label located on the inside of the unit (starts E.....).



Require another language?

This manual is also available for download in the following languages:



Français

FR



Nederlands

NL



Deutsch

D



Español

ES



Česky

CZ



Русский

RU



Magyar

HU



Nynorsk

NO



Íslenska

IS



Polski

PO

To download please visit www.foster-spares.com and select the appropriate model of refrigerator/ freezer.



>Page Left Blank Intentionally<



UK Head Office

Foster Refrigerator
Oldmedow Road
Kings Lynn
Norfolk
PE30 4JU

a Division of ITW (UK) Ltd

Tel: +44 (0)843 216 8833
Fax: +44 (0)843 216 4707

Email: support@foster-uk.com

Website: www.fosterrefrigerator.co.uk