



# QUICK START GUIDE

AS1000 Series

**THANK YOU FOR PURCHASING YOUR NEW EUREKA VACUUM!**

Please take a few moments to read this Quick Start Guide. It is designed to help you assemble your vacuum easily.

To view our "How to Assemble" demo, visit [www.eureka.com/airspeed/assembly](http://www.eureka.com/airspeed/assembly)

If you have questions about your new vacuum, please contact our customer service helpline at **1-800-282-2886**. We're here to help!

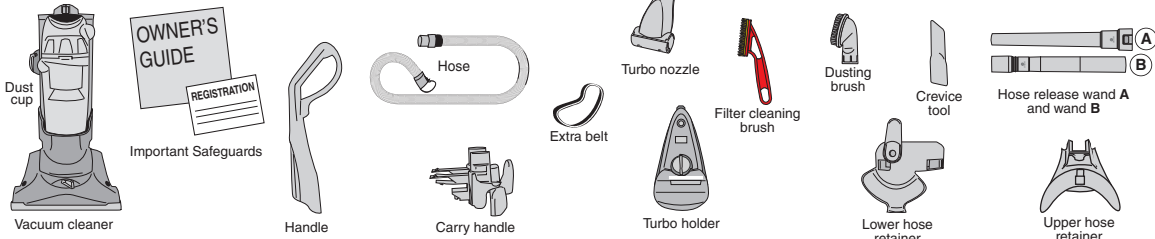
Helpline Hours:  
8 a.m. to 7:30 p.m. (CST), Monday - Friday  
10 a.m. to 6:30 p.m. (CST), Saturday - Sunday

**eureka!**  
Invented for the way you clean™

## STEP 1

### What's in the carton

No screws or tools required!

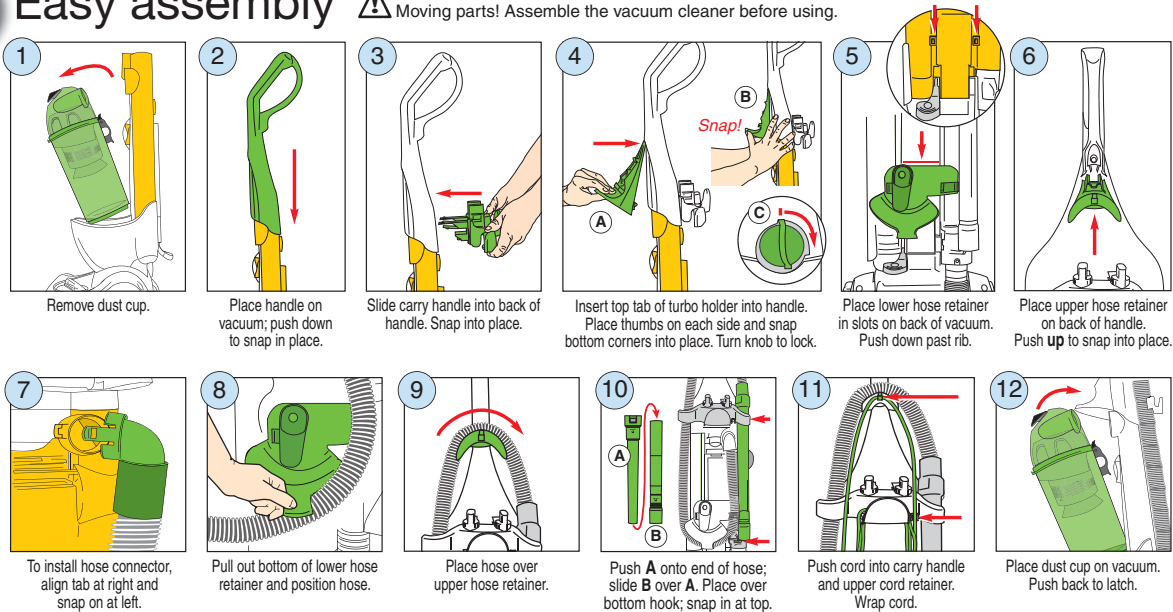


## STEP 2

### Easy assembly

**PLEASE READ ALL INSTRUCTIONS BEFORE USING THIS VACUUM CLEANER.**  
Moving parts! Assemble the vacuum cleaner before using.

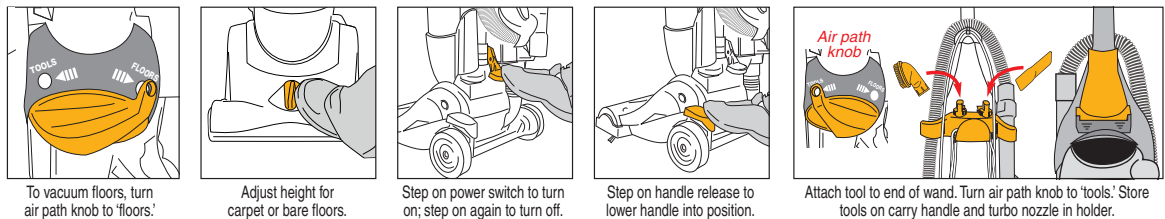
Follow 1-12 in order to ensure proper assembly.



## STEP 3

### Get ready to vacuum

Power switch is marked ① for on-off.



## STEP 4

### Clean and assemble dust cup

Empty dust cup after each use.

