

Owner's Manual

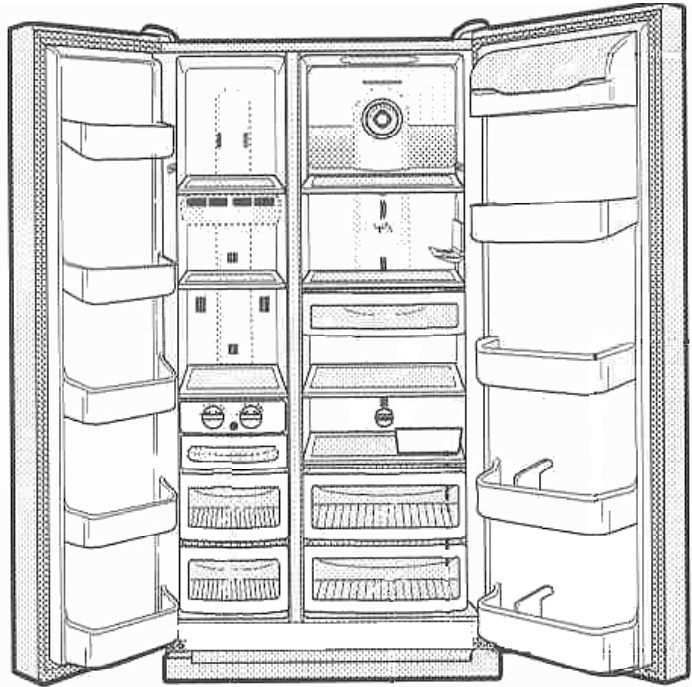


You can rely on Defy

F580 Side by Side Frost Free Refrigerator—Freezer

INDEX

- 2 - Introduction
- 2 - Unpacking
- 2 - Before installation
- 2 - Removing the doors
- 3 - Replacing the doors
- 3 - Installation
- 3 - Electrical installation
- 4 - Levelling the refrigerator
- 4 - Caution notes
- 5 - Interior parts identification
- 6 - The control panel
- 7 - Setting the temperature
- 8 - Crispers
- 8 - Ice cubes
- 8 - Food storage tips
- 9 - Care and cleaning
- 10 - Replacing the lamps
- 10 - Owner's responsibility
- 11 - Questions and answers
- 11 - Service
- 12 - Service centres
- 13 - Notes
- 16 - Warranty



The Manufacturer strives for continuous improvements.
For this reason, the text and illustrations in this book are subject to change without notice

www.defy.co.za

Introduction

Congratulations on the purchase of this quality appliance.

Please read these instructions carefully before using the product. This book will provide you with information on how to operate and care for your appliance in order that you gain the maximum benefit from it and enjoy many years of trouble free use.

Unpacking

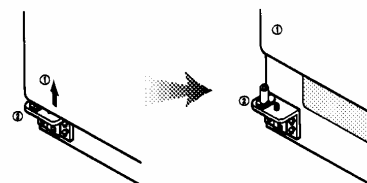
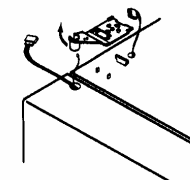
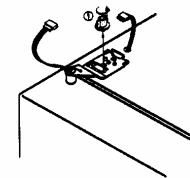
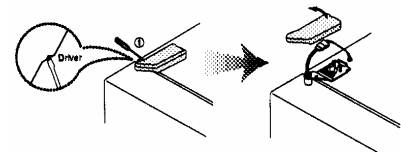
- Please ensure that packaging material is disposed of in a responsible manner.
- Plastic bags should be cut up to prevent children playing with them and accidentally suffocating.
- If the appliance is damaged in any way, do not use it. Report the damage to your dealer, who will take the necessary corrective action.

Before installation

Measure the width of the kitchen entrance through which the unit must pass. If the unit will not pass through easily without risking damage, then the doors should be removed to reduce the width and allow free passage. Once the unit is in position the doors can be re-fitted.

Removing the freezer door

- 1** Remove the hinge cover screw.
Insert a blade or small flat screw driver into the side groove of the hinge cover and pry it loose.
Remove the hinge cover.
- 2** Disconnect the harness wiring.
Turn the top hinge fastener 3 to 4 times in an anti-clockwise direction.
- 3** Remove the hinge by lifting the front and pulling it free. Be sure to hold the door securely as the top is now no longer secured.
- 4** Lift the door free of the bottom hinge pin.

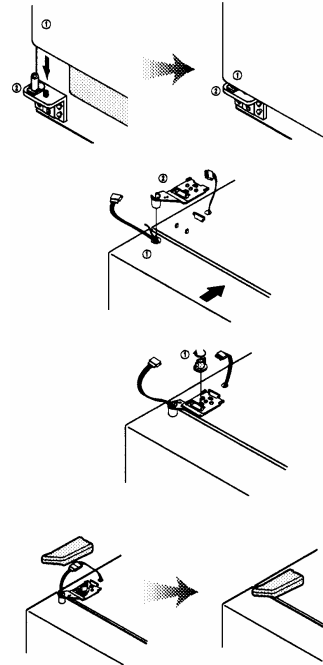


Removing the refrigerator door

Repeat steps 1 to 4 as described above on the refrigerator door.

Replacing the freezer door

- 1 Lower the freezer door bottom hinge hole over the bottom hinge pin and close the door.
- 2 Slide the back of the top hinge into the slot and lower the hinge pin into the top hinge hole of the door.
- 3 Tighten the hinge fastener and re-connect the harness wiring and earth wire.
- 4 Snap the hinge cover in place and tighten the screw.



Replacing the refrigerator door

Repeat steps 1 to 4 as described above on the refrigerator door.

Installation

- 1 The appliance should be positioned in a dry, well aired place away from heat sources such as stoves, geysers and direct sunlight. Allow an airspace at the rear of the refrigerator for ventilation purposes.
- 2 An electrical wall plug should be nearby and easily accessible.

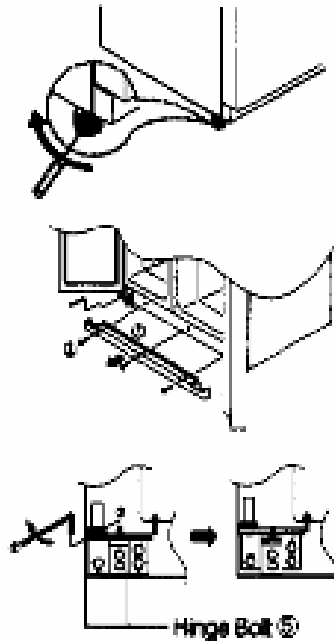
Electrical Installation

- 1 This appliance uses a 220-240V/50 Hz power supply.
- 2 The appliance should be plugged into a dedicated 15A earthed wall socket. Do not use an extension cord or multiple adaptor.
- 3 If the mains power cord is damaged, it must be replaced by a qualified electrician.
- 4 This appliance must be earthed and the manufacturer and the seller do not accept responsibility for any damage due to incorrect electrical connection.
- 5 This appliance may not be used with a battery inverter power supply.

Levelling the refrigerator

It is advisable to adjust the cabinet so that it tilts slightly backwards. This will ensure that doors close properly. The doors must be aligned and the cabinet must stand level (left to right) To adjust levels proceed as follows:

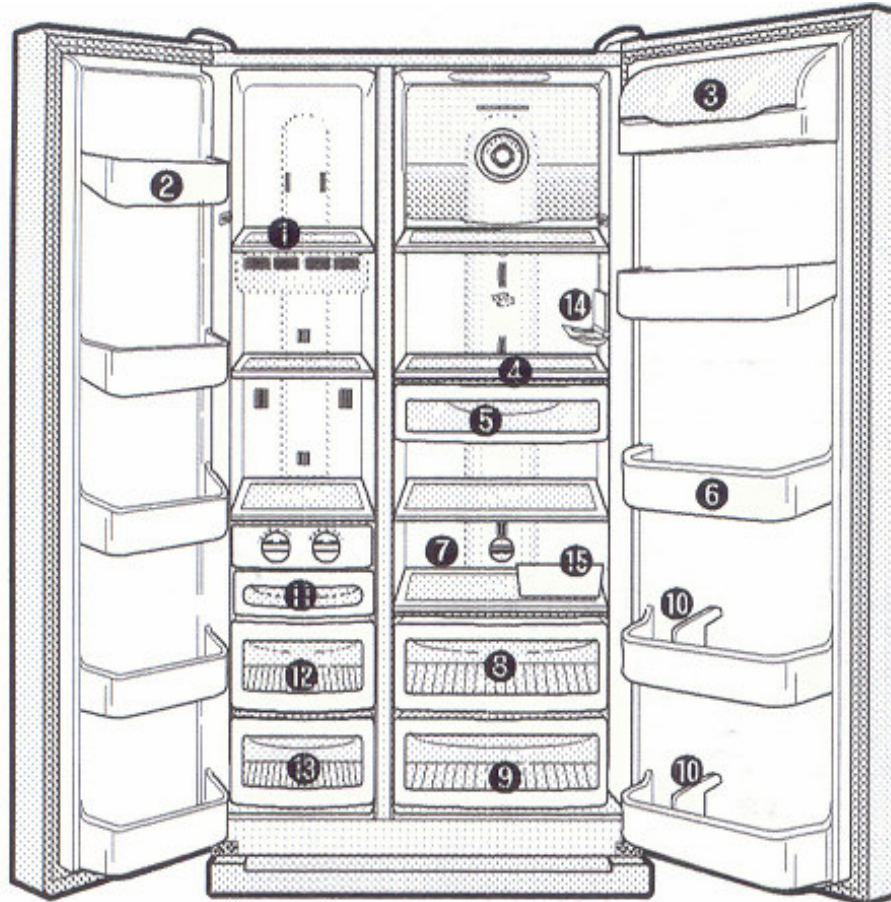
- 1 Insert a flat tip screw driver into the left front levelling foot and turn it. Clockwise will raise the unit and anti-clockwise will lower it.
- 2 Repeat the procedure , turning the right hand levelling foot until the unit stands level and the doors are aligned.
- 3 Should the amount of travel in the levelling feet be insufficient to align the doors properly, the hinges may be adjusted
- 4 Open the doors and unscrew the plinth. Loosen the hinge bolts slightly. Insert a spanner into the groove and turn the bolt until the doors are level. Fasten the hinge bolts and screw on the front plinth.



Caution notes

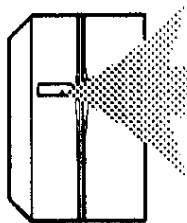
1. Never use flammable gas, benzene, thinners, petrol or other flammable liquids and sprays near the refrigerator.
2. Do not store flammable gas or liquids in the refrigerator or freezer.
3. Do not store medicine or academic research samples requiring strict temperature control in the refrigerator or freezer.
4. Always unplug the refrigerator when cleaning it.
5. Avoid touching metal freezer containers with bare hands as “cold burn” could result.
6. Do not store liquids, pot plants or open containers on top of the refrigerator as these might spill causing electrical shorting.
7. When discarding an old refrigerator please render the doors inoperative as children ,while playing, might get trapped inside and suffocate.
8. Do not place sealed liquid containers in the freezer. Liquids expand as they freeze and containers might rupture as a result.

Interior parts identification



1. Freezer shelves are made of strong tempered glass and may be used for storing frozen foods such as meat, fish, and ice cream.
2. Freezer door storage bins are used for storing items that need to be accessed readily. Do not store ice cream or foods requiring a long storage period in the topmost bin.
3. The dairy compartment is ideal for storing butter and cheese.
4. Refrigerator shelves are made of strong tempered glass and may be used for storing everyday foods.
5. The cold storage drawer is for the storage of meat or fish that will be consumed shortly.
6. Refrigerator door storage bins offer convenient storage space for milk, bottles, jams and condiments.
7. The crisper temperature selector knob is used to select Chilled or Vegetable modes.
8. The top crisper may be used as a chilled storage facility.
9. Crispers are specifically designed for the storing of fruit and vegetables.
10. Bottle retainers prevent tall bottles from sliding sideways.
11. Ice trays and a storage container provide a ready supply of ice cubes.
12. The top freezer drawer is ideal for storing foods like snoek and squid, for an extended period of time.
13. The bottom freezer drawer is for storing meat, poultry and fish for long periods of time.
14. A hinged wine bottle support folds out when needed to chill wine.
15. Removable egg caddies offer convenient egg storage.

The control panel



Insert the power cord plug into a wall socket and switch on.



SILENT

An optical sensor at the top centre of the control panel senses the amount of light surrounding the appliance. When it is dark, silent mode commences. In this mode the refrigerator maintains minimal operating conditions and consequently produces less noise. Do not block the sensor with fridge magnets or “post-it” notes.



FUZZY

The Fuzzy icon is always visible and indicates that the digital control system is operational.



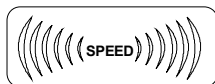
DEODO

The deodorization mode works whenever the refrigerator is operating.



LOCK

Press this button to lock the controls thereby preventing unauthorized or accidental activation. Press this button and hold for longer than one second to unlock the controls.



SPEED

Speed mode will automatically start to function and maintain optimum temperatures whenever a large quantity of food has been stored or when the door has been opened more frequently than usual.



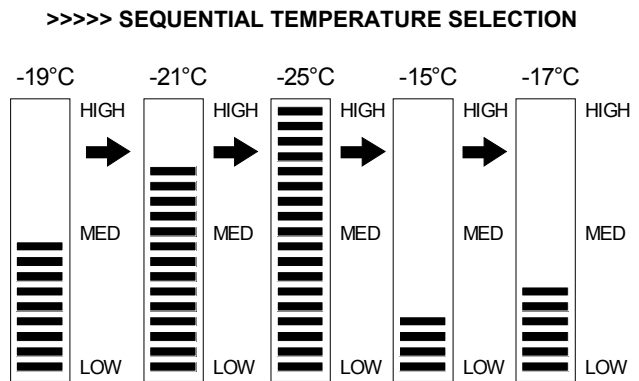
SLEEP

Pushing this button will shut the refrigerator down for a maximum period of 12 hours. Thereafter the unit will resume operation at the previously selected settings. Pressing the button once more will cancel the sleep function.

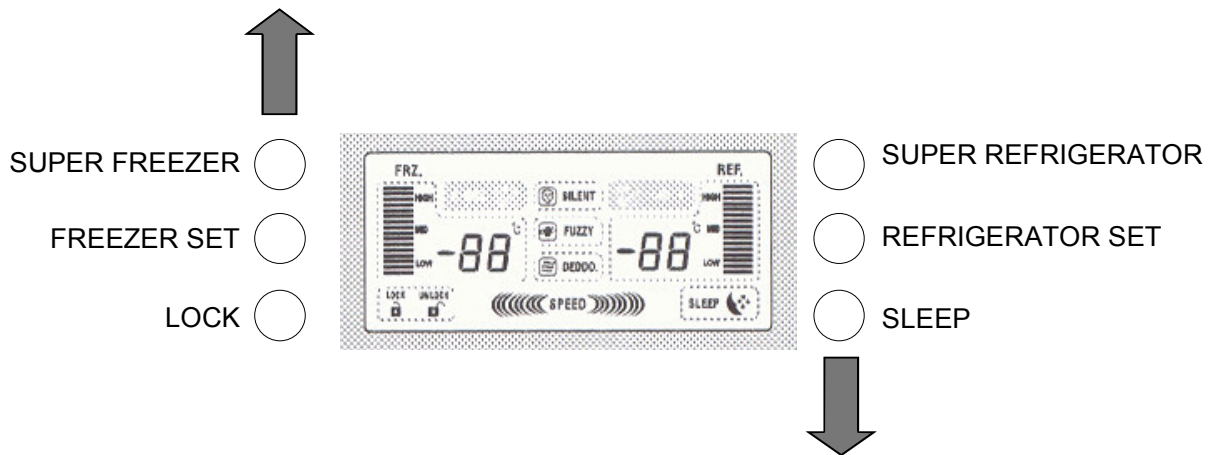
Note. The interior lights will automatically extinguish if the doors are left open for longer than ten minutes. If a door is accidentally left open for longer than one minute an audible alarm sounds at 1 minute intervals and for approximately 5 minutes.

Temperature setting - Freezer compartment

- Press the **Freezer Set** button to select the desired freezer temperature.
- Press the **Super Freezer** button should you require faster freezing.
- The **Quick** icon will glow.
- The Super Freezer mode will end automatically after a period and the unit will re-set to the previously selected mode.
- The Super Freezer mode may be cancelled manually by pressing the button once more.

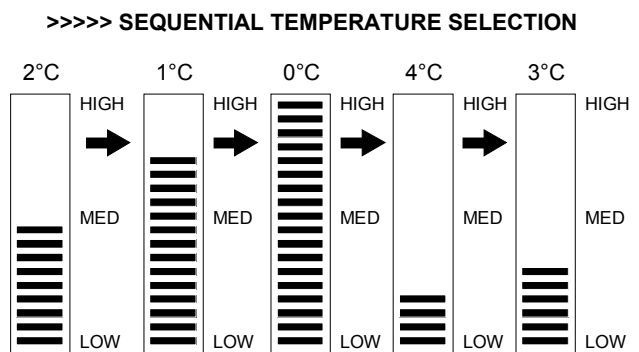


Note: The interior temperature can vary depending on the frequency of door openings and the ambient air temperature.



Temperature setting - Refrigeration compartment

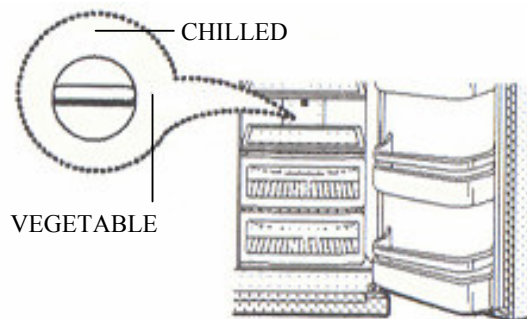
- Press the **Refrigerator set** button to select the desired refrigerator temperature.
- Press the **Super Refrigerator** button should you require faster refrigeration.
- The **Quick** icon will glow.
- The Super refrigerator mode will end automatically after a period and the unit will re-set to the previously selected mode.
- The Super Refrigerator mode may also be cancelled manually by pressing the button once more.



Note: The interior temperature can vary depending on the frequency of door openings and the ambient air temperature.

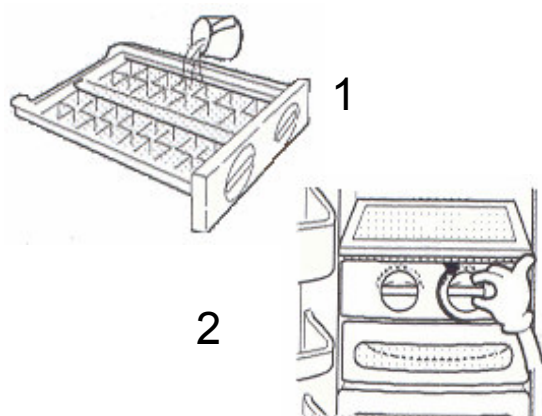
Crispers

- There are two crisper drawers.
- The top crisper has a temperature control knob offering Chilled or Vegetable storage. Turn the knob to the desired setting.
- The Chilled setting is somewhat colder than that of the Vegetable setting.
- Do not place foods close to the cold air spout as this could restrict the air flow.



Ice cubes

- Pull out the ice tray and fill with clean water to the arrow mark
- Do not overfill as the cubes could then stick together.
- When the ice cubes are fully formed, turn the handle clockwise to separate the cubes and allow them to fall into the ice container below.
- Repeat if necessary to free all the cubes.
- Rinse and dry the ice cube container if it will not be used for some time.



Food storage storage tips

Freezer

- Wash food before storing it.
- Operate the freezer for 12 hours before loading it.
- If you are loading bulk into the freezer, load one quarter at a time and allow to freeze before loading the next quarter.
- Divide food into reasonable portions according to your requirements.
- Allow hot food to cool before putting it in the freezer.
- Seal all foods, or place in airtight containers to prevent dehydration.
- Remember, liquids can increase in volume when frozen. Do not store sealed bottles, jars or cans in the freezer as the contents will freeze, expand and rupture the container.
- Do not exceed the expiry date shown on food packs.

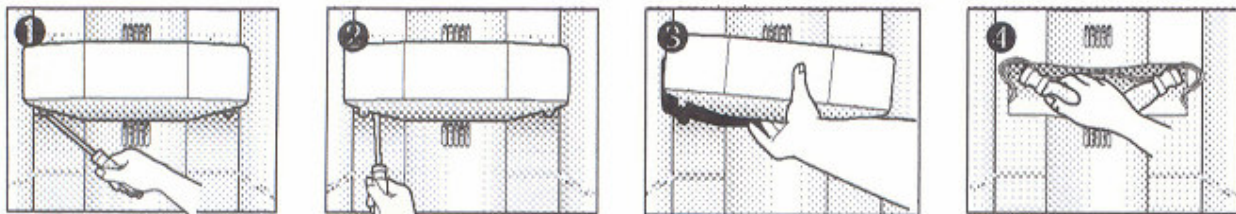
Refrigerator

- Place watery foods to the front of the shelves, nearer the door and away from the cold air spout where they could freeze.
- Be aware that tropical fruit like bananas can easily deteriorate if the storage temperature is too low.

Care and cleaning

- Always disconnect the plug from the mains socket before cleaning the appliance.
- Clean the inside of the appliance whenever necessary using a solution of warm water and Bicarbonate of Soda. (1 table spoon to every 2 litres of water).
- Dry with a soft cloth.
- Do not use pot scourers or abrasive powders to clean the appliance.
- Do not use benzene, thinners or any volatile cleaners to clean any part of the refrigerator
- Spillages, especially citric and acidic juices, must be wiped up immediately as they could stain the product.
- The back of the unit may be vacuumed or dusted using a soft bristle brush.
- A mild furniture polish may be used on the exterior cabinet to add lustre and protect against finger marks.
- Shelves, freezer drawers, crispers and door bins may be removed for cleaning purposes.
 1. To remove the dairy compartment flap, open it a little , hold with both hands and slide to the left
 2. To remove the dairy tray, hold both ends and lift upwards.
 3. To remove a door bin, first remove the bottle retainer then hold both ends of the bin and lift up.
 4. To remove the shelves, open the doors fully and slide each shelf out.
 5. To remove the crispers, lift slightly and pull free.
 6. To remove the ice tray, pull forwards.

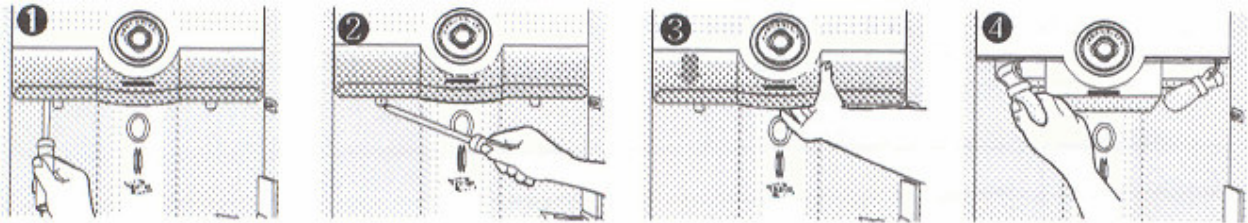
Replacing a freezer lamp



1. Remove the screw caps at the bottom of the light cover with a small flat tipped screw driver.
2. Unscrew the two screws securing the lamp cover.
3. Hold the lamp cover and pull forward to remove it.
4. Remove and replace the lamp with one of similar specifications.
5. Reassemble in reverse order.

Replacing a refrigerator lamp

Refrigerator top light



1. Remove the screw caps at the bottom of the light cover with a small flat tipped screw driver.
2. Unscrew the two screws securing the lamp cover.
3. Hold the lamp cover and pull forward to remove it.
4. Remove and replace the lamp with one of similar specifications.
5. Reassemble in reverse order.

Refrigerator bottom light



1. Snap out the lower catch of the light cover using a small flat tipped screw driver.
2. Pull the light cover free
3. Remove and replace the lamp with one of similar specifications
4. Reassemble in reverse order.

Owner's responsibility

Since the following are not factory faults they are the owners responsibility:

- Damage to the exterior finish.
- Damage caused by moving, installing or connecting the appliance incorrectly.
- Breakage of glass, plastics and other components.
- Replacement of light bulbs.
- Damage caused through improper use of the appliance.

Questions and answers

Why do the front and sides of the refrigerator feel warm?

Heating tubes are located beneath the surface which are designed to prevent water vapour from condensing on a cold surface.

Why are the doors sometimes difficult to open?

When the door is closed and opened immediately thereafter, warm air which entered the refrigerator caused a pressure difference which tends to suck the door closed momentarily. Wait a little while and the door should open easily once more.

Why does the refrigerator sometimes make a peculiar gurgling, buzzing or cracking noise.?

These are normal and could be caused by the compressor, the defrost system, the fan, and material shrinkage / expansion
Levelling the refrigerator can reduce these sounds.

Why does moisture form on the interior walls and lamp housing?

If the refrigerator or freezer is located in a hot and humid area, and the door is opened frequently, water droplets or dew may form on the interior walls of the appliance.
This has no effect on the performance and the water may simply be wiped up using an absorbent cloth.

Why is the refrigerator too warm or too cold?

Set the freezer and refrigerator temperatures to a more suitable setting.

Service

Before calling a service technician to assist with a problem, please check:

- Are the temperatures set correctly?
- Is the power switched OFF? The power should be ON.
- Has a house fuse blown or a circuit tripped out? Repair or re-set as necessary.
- Is the 15-amp plug pushed firmly into the wall socket? Check another appliance such as a toaster or kettle in the same socket.
- Has the door been left open for a long time? Close the door and monitor performance.
- Is there adequate provision for airflow at the rear of the unit.?
- Are any of the shelves so tightly packed as to obstruct air flow between stored foods?

Remember that you may be charged for a service call even during the warranty period if the fault is caused by any of the above.

If you have followed the instructions and still have a problem, contact the nearest Defy Service Centre. They will be able to advise you on any aspect of the machine or send a qualified technician to repair it.

Service centres

BLOEMFONTEIN

P.O.Box 1691 Bloemfontein. 9300. 160 Long Street, Hilton.
Bloemfontein 9301.
Tel. 051 400 3900

CAPE TOWN

P.O.Box 953 Milnerton. 7435 5A Marconi Rd. Montague
Gardens, Milnerton 7441.
Tel. 021 551 8314

EAST LONDON

P.O.Box 7006 East London 5200. 16 Bowls Rd. Arcadia
East London 5201.
Tel. 043 743 7100

JOHANNESBURG

P.O.Box 27150 Benrose 2011. Cnr. Mimetes & Kruger Sts. Denver ext.12
Johannesburg. 2094.
Tel. Sales, Administration, Distribution, Commercial Head Office, National Groups, Contracts and
Credit.
Tel. 011 621 0200 or 011 621 0300

DURBAN

P.O.Box 12004 Jacobs 4026. 174 Teakwood Rd.
Jacobs 4052.
Tel. 031 460 9712

POLOKWANE

P.O.Box 1719 Polokwane 0700. 87 Nelson Mandela Drive.
Superbia 0699.
Tel. 0152 92 1166 / 7 / 8 / 9.

PORT ELIZABETH

P.O.Box 2971 North End 6056. 3 Sidon Str.
North End Port Elizabeth.6001.
Tel. 041 401 6400

PRETORIA

P.O.Box 19768 Pretoria West 0117.
Block A1 Old Mutual Industrial Park.
Cnr. D.F.Malan Drive & Moot Str. Hermanstad. 0082.
Tel. 012 377 0061

OTHER AREAS ARE SERVICED BY OVER 200 AUTHORISED SERVICE AGENTS.
PLEASE CONSULT THE NEAREST **REGIONAL DEFY SERVICE CENTRE** FOR DETAILS.

Warranty

This certificate is issued by DEFY APPLIANCES LIMITED manufacturers of Defy and Ocean products, hereinafter the Company, to the original purchaser only, of the appliance described on the certificate and shall constitute the only warranty given in respect of this appliance.

The Company warrants to the original purchaser that for a period of TWO YEARS from date of purchase the appliance is free from defect under normal domestic use, both in workmanship and material, subject to the following conditions.

1. Repair or replacement of any part of this appliance, found by the Company to be defective, shall be at the election of the Company. The Company reserves the right to effect such service through any of its Service Divisions or Authorised Service Dealers. The cost of such service shall be borne by the Company in full, provided that the appliance is located no further than 50 km from a Company Service Centre or an Authorised Service Dealer. Where the appliance is located beyond the 50 km radius, the purchaser shall be liable for the standard travelling charges, as determined by the Company.

CARRY IN SERVICE Microwave ovens, Compact cookers, Ice makers and small appliances are repaired in our service centres and are not collected from the customers home. Faulty units should be delivered to the purchasing dealer or to the nearest Company Service Centre for warranty repairs.

2. Vitreous enamelware, fuses and lamps are specifically excluded from these warranties. It is an express condition of these warranties that the purchaser takes due care and attention in the use and maintenance of the appliance. Abuse, misuse in conflict with operating instructions, connection to incorrect voltages and subjection to commercial use shall release the Company from its obligations.

3. This warranty shall become void and cease to operate if the appliance is dismantled by, or any repairs to the appliance are effected by any persons not duly authorised by the Company, or if substitute parts not approved by the Company are used in the appliance, or if the serial number of the appliance is removed.

4. The Company shall not be responsible for damages resulting from fire, flood, civil disturbances or any Act of God. The Company shall not, in terms of these warranties be responsible nor held liable for any consequential loss or damage of any kind caused by or due to the failure or malfunction of the appliance.

5. The Company shall not be responsible for transportation or other costs other than those incurred within the provisions of Point 1 of this Certificate.

6. These warranties shall not apply to the appliance if it is purchased or used beyond the borders of the Republic of South Africa, Namibia, Botswana, Swaziland and Lesotho.

7. Where service is requested under warranty and no fault or defect can be found by the Company, all costs incurred will be for the purchaser's account.

8. This Certificate as well as your invoice will serve as proof of purchase. For the purpose of warranty, it will be essential to produce this Certificate and invoice. Failure to do so, will render the purchaser liable for service costs.

**KEEP THIS CERTIFICATE AND SALES INVOICE AS PROOF OF
PURCHASE FOR WARRANTY PURPOSES**