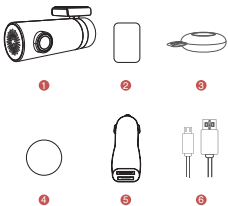
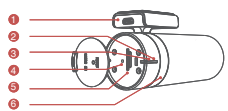


1 Package Contents

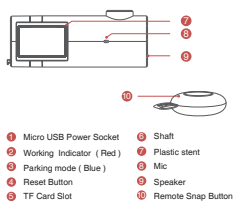


- 1 mini Camera x1
- 2 3M Sticker x1
- 3 Remote Snap x1
- 4 Removable Sticker x1
- 5 Car Power Adapter x1
- 6 USB Cable x1

2 mini Camera at a Glance

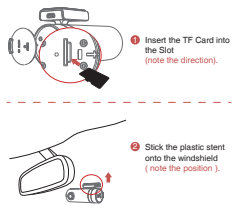


— 1 —

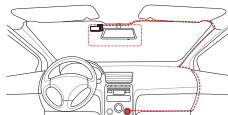


3 Getting Started

- 1 Micro USB Power Socket
- 2 Working Indicator (Red)
- 3 Parking mode (Blue)
- 4 Reset Button
- 5 TF Card Slot
- 6 Shaft
- 7 Plastic stent
- 8 Mic
- 9 Speaker
- 10 Remote Snap Button



— 2 —



- 1 Connect the USB cable with camera and Car adapter. When the car starts up, the camera will boot up automatically with voice prompt "Hello".
- Note:
 - Support up to 32GB TF Card. Class 10 is necessary. Do not plug the TF card when the Camera is working.
 - Please plug the USB cable in the 2.1A output of the car adapter.
 - Please do not refile the power supply.
 - You can click the remote snap button on the Console, beside the gear, or on the steering wheel. DO NOT put it on the position of Airbag.

4 Instructions for use

- 1. App Download
For Android/iOS Apps, Please search for DDPai in Google Play or App Store, download and install.
- 2. Connect the Camera to mobile phone
For iPhone:
iPhone Settings — WLAN — Select you, DDPai_mini — Enter the Password 1234567890 to connect the camera AP — Launch DDPai App and the camera will be displayed in the camera list.
For Android:
Launch DDPai App — Click "+" to Search the camera — Select DDPai_mini in the WiFi list — Enter the Password 1234567890 to connect camera.

— 3 —

Note: For Android, do not connect the camera WiFi in phone settings. If forgotten the password, press the reset button for a few seconds to restore factory settings. The initial password is 1234567890.

3. Live Preview ,playback and video clips download

- Preview When the mobile phone is connected to the Camera, click play button to preview the Real-time video.
- Playback: In full-screen preview mode, drag the progress bar or slide the touch screen, and find the photo that you need by thumbnail images and playback.
- Download video clips: In playback mode, click the satons icon to launch download UI, and drag the progress bar and find the video clips to download.

4. Take a photo or record video

- Click the remote snap button to capture a photo. Switch on the "10s video" option in the camera setting to record 10 seconds video (5 seconds before and after the click action). The photos and videos will be specially stored in the Camera TF Card and wait a few seconds to be transferred into your mobile phone.

5. Photo Album management and Share the photos

- Check all the photos and videos in photo album. You can choose several photos to add to favorite, or delete, or share to social network.

6. Pair the remote button to camera

- If the remote snap doesn't work, press the button to check the indicator light. If the indicator light is on, please enter the Camera Setting — Advance Settings — remote controller pairing, and take the remote snap near the camera and press the button several times to pair.
If the indicator light is not on, the battery may have run down. Please open the rear cover of the remote snap and replace a new battery cell.

— 4 —

7. Other settings

- Enter the setting to modify the general settings. To change the camera setting, you must connect the camera and enter the camera settings. You can change the image-quality, mute the mic, adjust the volume etc.
- For frequently asked questions, please enter "Me-Help".

5 Attention

- Apps and Camera firmware continuously update.
- Store temperature: -20 °C ~ 70 °C
- Stain on the lens would seriously reduce the image quality. Cleaning tool is very simple: the lens paper with a cloth or a fine tool, lens brush and cleaning aids. Do not use cardboard, paper towel or napkin to clean the lens.
- In case of some troubles or damage do not attempt repairing the camera by yourself. The camera must be repaired or adjusted only by specialists.
- When this product reaches its end of life, take it to a collection point designated by local authorities for the recycling of electronic equipment.

6 Specifications

- 1. Main hardware
CPU: 1080P@30fps/H.264 encoder
Image Sensor: Sony 1/2.9 inch Exmor CMOS Sensor
Lens: f6-glasses, 140° Wide Angle, F1.8
- 2. Technical Parameters
Wireless: WiFi & 2.4GHz
Storage: Class10 TF Card, up to 32GB
Video Output: Wireless video stream to mobile phone
G-Sensor: three axis acceleration sensor, collision latch, APP adjusting sensitivity.
Video pixel: 1920x1080@30ps
Camera pixel: 1920x1080
RAM: 128M

— 5 —



User Manual