



MPK4050

Portable MP3 Player

User's Guide

1. Introduction	- 3 -
2. Install the MP3 Player	- 4 -
3. MP3 Player Controls	- 4 -
4. Screen Display	- 5 -
5. Transfer data to and from the MP3 Player	- 5 -
6. Turn on/off the player	- 5 -
7. Listen to WMA/MP3 music with the MP3 Player	- 6 -
8. Begin to play your music	- 7 -
9. Video	- 8 -
10. Voice Recorder	- 10 -
11. Hold Function	- 11 -
12. Photo	- 12 -
13. E-Book	- 12 -
14. Advanced Settings	- 13 -
15. About	- 14 -
17. Remove the MP3 Player from your computer	- 14 -
18. Trouble Shooting	- 15 -
19. MP3 Player Specifications	- 17 -
20. Safety	- 18 -

1. Introduction

This device incorporates a portable **WMA/MP3** Player, Video player, Photo Viewer, E-Book Viewer, Voice Recorder and USB Mass Storage Device. It will bring you pleasure and enjoyment in this digital era.

MP3 Player Features:

- WMA/MP3 player.
- WMA DRM9
- Video player
- Photo viewer
- Synchronous lyric display with WMA/MP3 music.
- Voice recorder.
- E-Book Viewer.
- USB mass storage device.
- Integrated USB connector.
- Backlit display.
- Superb audio quality.

System support:

- Supports Windows Me/2000/XP.
- To Windows 2000 users, Windows Service Pack 3 must be installed.
- Supports Windows 98 SE after installation of drivers (please consult the latter part of this instruction).
- Supports Mac OS X (version 10.2.6 or above) without driver.

Note:

- ✓ *To minimize damage from static electricity, do not operate the player in an extremely dry environment. The product may get malfunction and requires to be reset.*

Battery management

- Battery: Built-in 520mAh Rechargeable Li-ion battery.
- Charge: Connect the MP3 Player to the computer. A few seconds later, a battery icon blinks on the top of the MP3 Player's screen, indicating the battery is being charged. If the battery is not charged automatically, please press Play button briefly. It stays fully to indicate the battery is fully charged. It must be charged for 4 hours for the first time. And the subsequent charge will take about 2 to 3 hours.

Note:

- ✓ Please recharge the battery when the screen displays:




- ✓ Please fully charge the battery every two or three months when the player is not used for a long time. Otherwise, the battery voltage may be too low to support the player's power on. It takes about four hours for fully charge.

2. Install the MP3 Player

- **Windows Me/2000/XP** users need to install the MP3 player driver if they want to upgrade the firmware.

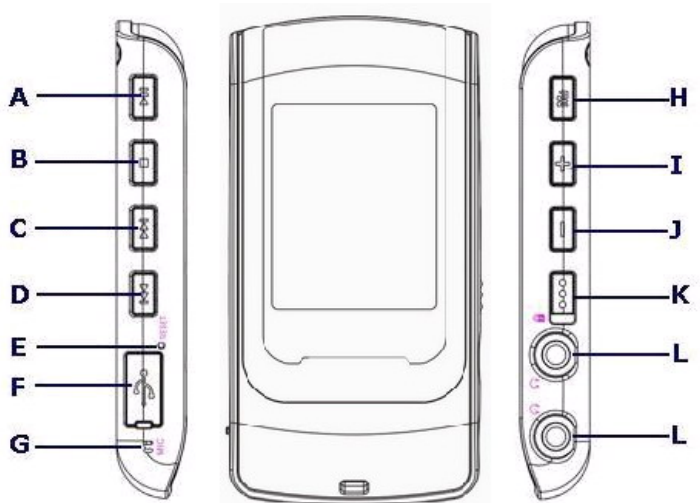
Note for Windows 2000 users:

- ✓ **Windows Service Pack 3 must be installed.**

- Windows 98 SE users need to install the MP3 Player on their system for connection:
 1. Insert the CD attached in the package to the CD-ROM.
 2. Open the folder "Driver" bundled on the CD which contains the MP3 Player installation program.
 3. Click on the **Setup**  icon to begin the installation.
 4. Follow the Wizard to complete the installation.

3. MP3 Player Controls

- A. Power On /Play / Pause / Enter button
- B. Power Off / Stop button
- C. Skip Previous / Fast Rewind button
- D. Skip Next / Fast forward button
- E. Reset Hole
- F. USB Port
- G. Microphone
- H. Menu button / A-B button
- I. Volume up button
- J. Volume down button
- K. Hold Switch
- L. Earphone jack



4. Screen Display

1. Play / Pause / Stop
2. Equalizer
3. ID3 Tag
4. Volume level
5. Process bar
6. Elapsed Time/ Track Time
7. Locked
8. A-B repeat / Play mode
9. Battery Indicator
10. Current track number / Total track number
11. Music information



5. Transfer data to and from the MP3 Player

- 1) Make sure that the MP3 Player is off.
- 2) Remove the USB port cover of the player. Disconnect the earphone.
- 3) Connect the MP3 Player to your computer through USB cable. The screen will display "USB Connected", indicating that the player is in USB mode. The player is automatically recognized (in 'My Computer') as removable media devices afterward.
- 4) Then the MP3 Player can be used as an external disk for you to transfer files.
- 5) After removing the MP3 Player from your computer, **WMA/MP3** files can be listened to and all data within the unit can be transferred to another computer.



Note:

- ✓ *Other types of data such as Word, Excel, PowerPoint, JPEG, etc. can be stored and transferred by this unit.*
- ✓ *When transfer data to the player, please pay attention that two to three Megabytes must be reserved for system files. Otherwise, the player may not be properly turned on.*

6. Turn on/off the player

- To turn on the player, press the Power On button once.
- To turn off the player, press and hold the Power Off button until the screen motion disappears.

7. Listen to WMA/MP3 music with the MP3 Player

- 1) Copy WMA/MP3 music files to the MP3 Player (please take the reference of "Transferring data to and from the MP3 Player").
- 2) Connect with supplied headphones.
- 3) Press the Power On button to turn on the player.
- 4) Press the Play button to play the music.
- 5) Use the MP3 Player controls to play back and adjust volume level to listen to the WMA/MP3 music.

7.1 A-B Repeat function

- If you want to listen to one section of the music repeatedly, you can use A-B repeat function.
- In playing mode, press and hold the A-B button to set the starting point (point A) of the music and press and hold the A-B button again to set the ending point (point B). The A-B section will be played repeatedly on the player.
- Press and hold A-B button again to cancel the repeat.



Note:

- ✓ The interval between point A and point B must be more than 3 seconds.

7.2 Lyric display function

The MP3 Player supports lyric files in LRC format.

- 1) Prepare the MP3 or WMA music as you like, for example, happymusic.mp3;
- 2) Download a lyric file from internet. The lyric file must have an extension file name LRC. For example, happymusic-2004.lrc.
- 3) Rename the lyric file. For example, happymusic.lrc. It is to make sure the lyric filename is the same as the corresponding music filename.
- 4) Copy the lyric file & music file to the MP3 player.
- 5) Disconnect the MP3 player from your computer.
- 6) Use Skip buttons to select the music file which has the related lyric files, for example, happymusic.mp3. Press Play button to play.
- 7) Then the music is played and lyric is displayed synchronously on screen.

Note:

- ✓ *The MP3 player supports LRC format only.*
- ✓ *If the lyric does not synchronize with the music, please download one better lyric file from internet and try again.*
- ✓ *Make sure the MP3 music files and LRC file are located in the same folder and their filenames are the same. Otherwise, the MP3 player can not recognize the lyric file.*

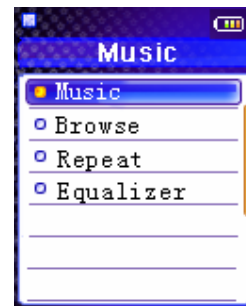
8. Begin to play your music

In the main menu, select **Music** and press Play button to enter the submenu, you can use Skip buttons to select one option and press Play button to confirm your selection or enter the submenu. Use Menu button to back to previous menu.



- **Music**

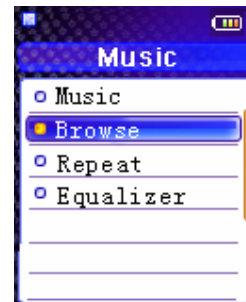
Select **Music** and press Play button to play the music.



- **Browse**

You can find and play the music as you want quickly by using browse function. Only music files in MP3 or WMA format can be recognized and played in Browse mode.

- 1) Select **Browse** and press Play button to enter the browse menu.
- 2) Press Skip buttons to select a file or folder and press Play button to play the music or enter the folder.
- 3) Select the Back option in Browse Menu or press Menu button to backward to upper level.



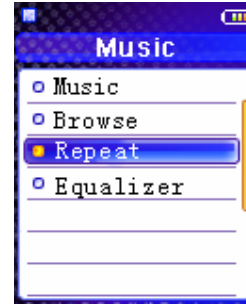
Note:

- ✓ *When a folder is selected in browse mode, press Menu button, and a sub-menu window will pop up. To enter the folder, select **Enter**. To play music located in the folder, select **Play**. Press Play button to confirm your selection.*
- ✓ *When a file is selected in Browse mode, press Menu button, a sub-menu window will pop up. To play this file, select **Play**. To erase, select **Delete**. Press Play button to confirm your selection.*

- **Repeat settings**

The available repeat modes are:

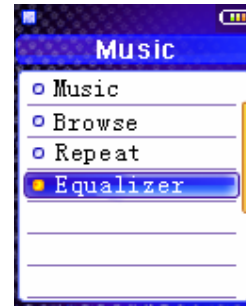
- Normal
 - Repeat One
 - Repeat All
 - Random
 - Random All
- 1) Select **Repeat** and press Play button to enter.
 - 2) Select one option and press Play button to confirm.



- **Equalizer settings**

The equalizer settings is to adjust the music playback effect .Six equalizer presets are available: Normal , XBass , Rock , Jazz , Classical , Pop.

- 1) Select **Equalizer** and press Play button to enter.
- 2) Select one option and press Play button to confirm.



9. Video

You can play Video files with this player after converting AVI, WMV, MPG video files to SMV video files by the software within the product CD.

Note:

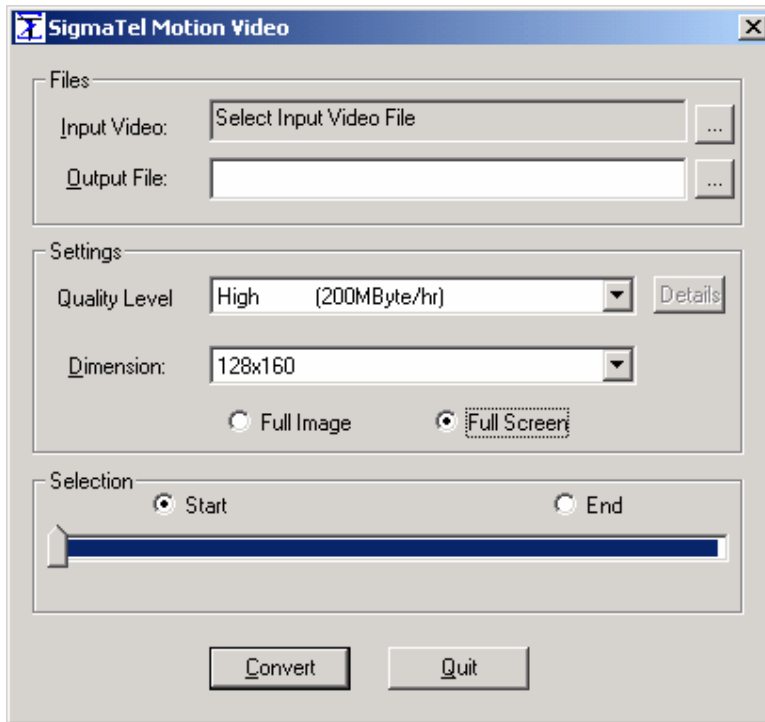
- ✓ *Only SMV files can be played by this MP3 player.*
- ✓ *Make sure Microsoft DirectX 9.0 or above version have been installed on your computer. Otherwise, an error message will appear while converting, or the converted files may be not played correctly on your player.*
- ✓ *SMV files must be put into the **MVIDEO** folder of the player.*
- ✓ *Do not put songs and other data into **MVIDEO** folder.*

How to convert files:

- 1) Insert the CD into CD-ROM.
- 2) Click "Transcoder" button on the CD autorun screen to open transcoder.

(Note: You can copy the folder "transcoder" bundle on the CD to your computer, and run "**video2smv.exe**" under it to open the transcoder.)

- 3) Set up the value of the video quality. To acquire high quality of motion, you are recommended to configure the settings as follows:



- 4) Select the source video file and specify the name and location of the output file.
- 5) Click Convert.
- 6) The converting will be finished when the Input Video window shows "Job Completed".
- 7) After converting, copy the SMV file to the **MVIDEO** folder of the player.
- 8) Turn on your player and press Menu button to enter into the main menu.
- 9) Select **Video** and press Play button to enter the list of video files.
- 10) Use Skip buttons to select a file.
- 11) Press Play button to play the video.
- 12) Press Menu button to back to the Video menu.

Note:

- ✓ When a file is selected in Video menu, press Menu button, and a sub-menu window will pop up. To play this file, select **Play**. To erase, select **Delete**. Press Play button to confirm your selection.

10. Voice Recorder

- **Record Setting**

- 1) Select **Record** in the main menu and press Play button to enter.
- 2) Select **Record Settings** and press Play button to enter the submenu.
- 3) Press Skip buttons to choose a record setting: **Source, Format, or rate.**
- 4) Press Play button to enter the submenu and choose one option as your current settings.
- 5) Press Play button to confirm and back to the previous menu.
- 6) Press Menu button again can back to the upper menu.



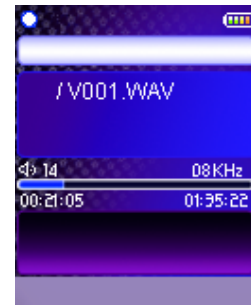
Note:

- ✓ *A high record sampling frequency brings an increase in sound quality but also a corresponding increase in memory usage.*

- **Start Record**

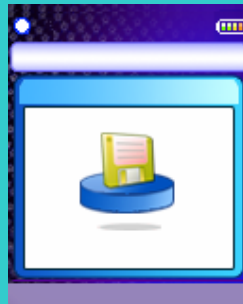
After record settings have been done, you can start record.

1. Select **Start Record** and press Play button to begin recording.
2. Press Pause button to pause recording and press Play button again to continue record.
3. Press Menu button to stop recording and back to the Record menu.
4. The voice record will be saved as a file named Vxxx.WAV (For example V001.WAV) in the Voice folder.



Note:

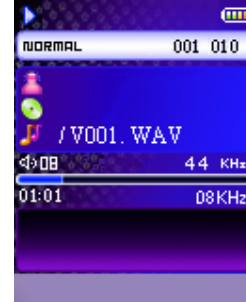
- ✓ *When all available memory has been used, the screen will display:*



- **Play back the voice record**

This operation is similar to the playback of music.

1. Select **Voice** in the Main Menu and press Play button to enter.
2. Use Skip buttons to select a record and press Play button to listen to.



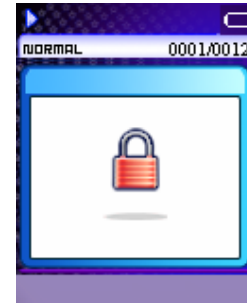
Note:

- ✓ *When a record is selected in Voice menu, press Menu button, and a sub-menu window will pop up. To play this file, select **Play**. To erase, select **Delete**. Press Play button to confirm your selection.*

11. Hold Function

Use the Hold (LOCK) function to deactivate the MP3 Player controls (to avoid accidental activation).

- 1) To activate the Hold function, slide the Hold switch.
- 2) Slide the Hold switch back to turn off the Hold function.



Note:

- ✓ *The MP3 Player will turn off automatically if the key is held when turning on the Player.*

12.Photo

To browse the pictures, Select **Photo** and press Play button to enter.

There are 3 different ways to view photos: Manual, Slide Show and Thumbnail.

While in Manual mode, you can use Skip Up and Down button to highlight manual then press Play button to confirm:



1. Use Volume Up and Volume Down button to zoom in and zoom out the picture.
2. In zoom mode, use Skip buttons to move the picture to right or left.
3. In zoom mode, use Play and Stop buttons to move the picture up and down.



(Repeat above for Slideshow and Thumbnail)

Note:

- ✓ Support picture in JPG/BMP format.
- ✓ The picture can only be zoomed out to its actual size.
- ✓ You can not delete the photo files via the player. Please connect the player to the computer and delete the file via the computer.

13.E-Book

- 1) Select **E-Book** in the main menu and press Play button to enter.
- 2) Use Skip buttons to select an e-book and press Play button to read.
- 3) In reading mode, press Menu button and a sub-window pops up.
- 4) Use Skip buttons to adjust the interval time for auto paging. Number 0~10 corresponding to 0~10 seconds.
- 5) Press and hold Menu button to back to the previous menu.



Note:

- ✓ Support e-book in TXT/HTML format.
- ✓ You can not delete the e-book files via the player. Please connect the player to the computer and delete the file via the computer.

14. Advanced Settings

To navigate the Settings menu:

- 1) Select **Settings** in Main menu and press Play button to enter.
- 2) Press Skip buttons to choose a setting.
- 3) Press Play button to enter the submenu of the option you selected.
- 4) Use Skip buttons to select a choice and press Play button to confirm.
- 5) After setting has been done, press Menu button to go back to the previous menu.

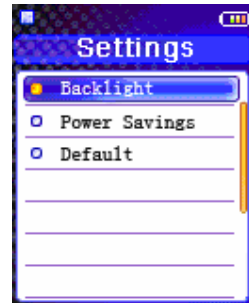


In the Setting menu, you can adjust:

- **Backlight**

To adjust the backlight

- 1) Select **Backlight** and press Play button to enter.
- 2) Use Skip buttons to adjust the delaying time before the backlight is switched off.
- 3) Press Play button to confirm and go back to Settings menu.



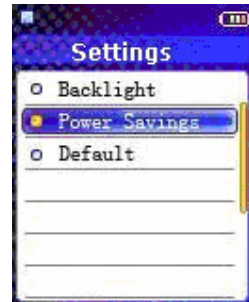
Note:

- ✓ *Selecting Off will turn off the backlight. Selecting On will always turn on the backlight. Battery life is considerable shorter if On is selected.*

- **Power Savings**

Power Saving function will automatically turn off the MP3 Player after a predetermined length of inactivity when the player is not running.

- 1) Select **Power Savings** and press Play button to enter.
- 2) Use Skip buttons to select time.
- 3) Press Play button to confirm and go back to settings menu.



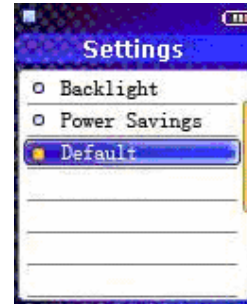
Note:

- ✓ *Selecting "Off" will never turn off the MP3 Player automatically.*

- **Default**

You can reset all settings to factory default settings.

- 1) Select **Default**.
- 2) Press the Play button. The default settings are loaded to the MP3 Player.



15.About

Information is available regarding the firmware version, built-in memory size and free memory size.

- 1) Select **About** in Main Menu list and press Play button to enter.
- 2) The firmware version, Internal Media and free memory space info will display on the screen.
- 3) Press Menu button to exit to Main Menu.



16.To Format the MP3 Player


 (By service experts only, otherwise warranty could be voided)

- 1) Connect the MP3 Player to the computer.
- 2) Format the MP3 Player (removable disk) by the Windows format tool.

Note:

- ✓ Do not select NTFS from the File System menu. Otherwise, the MP3 Player can not work and needs to be reformatted again.

17.Remove the MP3 Player from your computer

- 1) Right click the **USB Mass Storage Device** icon  in the taskbar (next to the clock).
- 2) A window of Safely Remove Hardware will pop up.
- 3) Choose **USB Mass Storage Device** and press Stop button.
- 4) In the pop-up window, choose **USB Mass Storage Device** and press OK button.
- 5) Wait until a *Safe to Remove Hardware* message is displayed.
- 4) Remove the MP3 Player.

18. Trouble Shooting

1. Why do I fail to install the installation software on my operating system?

Cause and solution:

- The Driver must be installed by running setup.exe. Attention that Windows 95 doesn't support USB connection. Please update your operating system to Windows 98(version 2.0, 4.10.2222A), Windows 2000, Window ME or Windows XP.
- There is no driver require for Windows 2000, ME and XP operating systems (Plug and play). But to Windows 2000 user, Windows 2000 Service Pack3 (SP3) must be installed.

2. Why do I fail to download the files to the internal memory?

Cause and solution:

- Check to see if the player has been properly connected to the computer.
- Check to see if the driver should be installed.
- Try to format the internal memory of the player and download the file again.
- The USB controller of your computer may not be compatible to the player. Please try to upgrade the motherboard driver of your computer.

3. Why the player can not play some music?

Cause and solution:

- This player only supports WMA and MP3 formats.

4. Why is there distortion during playback?

Cause and solution:

- This may be caused by low battery or temporary outside interface, please ensure the battery is enough for playback.
- It may because of the badly encoding of the file or result from the poor-quality source, please close all temporary programs before encoding to get a better quality or download a better one from the internet.

5. Why is the play quality bad?

Cause and solution:

- If the same file played fine on the computer, please download it again to the player. If it doesn't work, format the player and download again.
- It may be caused by the poor-quality source if it is played badly on the computer. Please replace a better one.

6. Why is there no responds to the pressing after powering on?

Cause and solution:

- Hold function may be activated. Slide the Hold button to inactivate this function.

7. Why do I hear nothing while the play button is pressed?

Cause and solution:

- Hold function may be activated. Slide the Hold button to inactivate this function.
- There may be no WMA or MP3 files within the player. Please download the music files with proper format into the player.
- The headphone may be not connected to the player correctly. Please connect it in the right way.
- The volume may be too low to hear, please adjust the volume level.
- The music file is not in WMA or MP3 format. Please encode the file to the accurate format.
- If the problem remains, please contract to the supplier for further support.

8. Why does the player display less internal memory than the volume it indicates?

Cause and solution:

- The volume that the player indicates is the memory volume of the flash within the player. And a player must conserve firmware for work, which occupies some memory of the flash.
- The firmware is system files of the player which cannot be seen and revised by the user.
- The internal memory displayed by the player does not include the volume of the firmware. Therefore, it will be less than the volume it indicates.

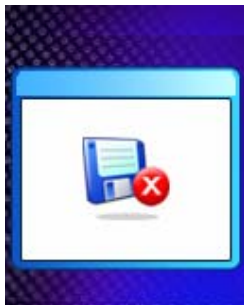
9. Why does the player display nothing after powering on?

Cause and solution:

- Ensure the battery is enough for powering on.
- Reset the player by pressing the reset hole.

10. The LCD displays a picture as below and power off.

Cause and solution:



- If you format the Player to NTFS format, it will show a picture and power off. You must reformat it to FAT or FAT32 format in Windows Explorer.

19. MP3 Player Specifications

- Internal Memory
 - Built-in 256MB,512MB, 1GB ,2GB or 4GB (Some memory reserved for firmware and system management)
- Interface
 - USB Compatible
- Power
 - Built-in high capacity rechargeable Li-ion battery
 - Battery continuous playing time: Up to 15 hours
- Equalizer
 - Normal, XBass, Rock, Jazz, Classical, Pop
- Display
 - 128 x 160 Dot-Matrix 65K TFT display
 - ID3 Tag display
- Controls
 - Power On /Play / Pause / Enter button
 - Power Off / Stop button
 - Skip Previous / Fast Rewind button
 - Skip Next / Fast forward button
 - Reset Hole
 - USB Port
 - Microphone
 - Menu / A-B button
 - Volume up button
 - Volume down button
 - Hold Switch
- Processor
 - 75 MIPS DSP
- Audio Playback
 - Windows Media Audio (WMA)
 - MPEG Audio Layer 3 (MP3)
- Voice Recording
 - Each 128 MB memory provides about 8 hours recording (at default setting)
 - Recording via on-board microphone

- Signal to Noise Ratio
 - > 90 dB
- Frequency Response
 - 20 Hz ~ 20 kHz
- Output
 - < 4.4 mW (each output)
- Total Harmonic Distortion Output
 - 0.01% ~ 0.5%
- Ports
 - USB Port
 - Phone Out
- Firmware
 - Flash based. User upgradeable.

20. Safety

Listening to loud sounds for prolonged periods may permanently damage your hearing. Before putting on the headphones, place them around your neck and turn the volume down. Then put the headphones on and slowly increase the volume until you find a comfortable listening level.