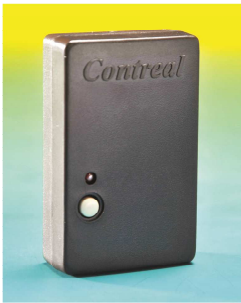


Manual

Wireless Door Sensor



Model # A03D

&

Wireless Motion Sensor



Model # A03M

Limited Warranty Statement

The limited warranty for the product extends for twelve (12) months beginning on the date of purchase with valid proof of purchase. The limited warranty extends only to the original purchaser of the product and is not assignable or transferable to any subsequent purchaser/end-user. The external housing shall be free of defects at the time of shipment and, therefore, shall not be covered under this warranty. The customer shall bear the cost of shipping of the product to Contreal service department and for shipping it back to customer.

This warranty does not cover:

Defects or damages resulting from use of the product in other than its normal and customary manner, and from abnormal conditions, improper storage, unauthorized modifications, unauthorized repair, unauthorized connections, misuse, neglect, abuse, alteration, improper installation, or other acts which are not the fault of Contreal
All plastic surfaces
Consumables such as battery

To obtain a warranty service, please write to service@contreal.com or write to address or call phone number mentioned on our website www.contreal.com

FCC

FCC ID: ZA2A03

This device complies with Part 15 of the FCC rules. Operation is subject to the following two conditions:

- (1) This device may not cause harmful interference, and
- (2) this device must accept any interference received, including interference that may cause undesired operation.

Important Information

This equipment has been tested and found to comply with the limits for a class B digital device, pursuant to part 15 of the FCC rules. These limits are designed to provide reasonable protection against harmful interference in a residential installation. This equipment generates, uses and can radiate radio frequency energy and if not installed and used in accordance with the instructions, may cause harmful interference to radio communications. However there is no guarantee that interference will not occur in a particular installation. If this equipment does cause harmful interference to radio or television reception, which can be determined by turning the equipment off or on, the user is encouraged to try to correct the interference by one or more of the following measures:

- * Reorient or relocate the receiving antenna
 - * Increase the separation between the equipment and receiver
 - * Connect the equipment into an outlet on a circuit different from that to which the receiver is connected
 - * Consult the dealer or an experienced radio/TV technician for help
- The user is cautioned that changes and modifications made to the equipment without the approval of manufacturer could void the user's authority to operate this equipment.

Battery:

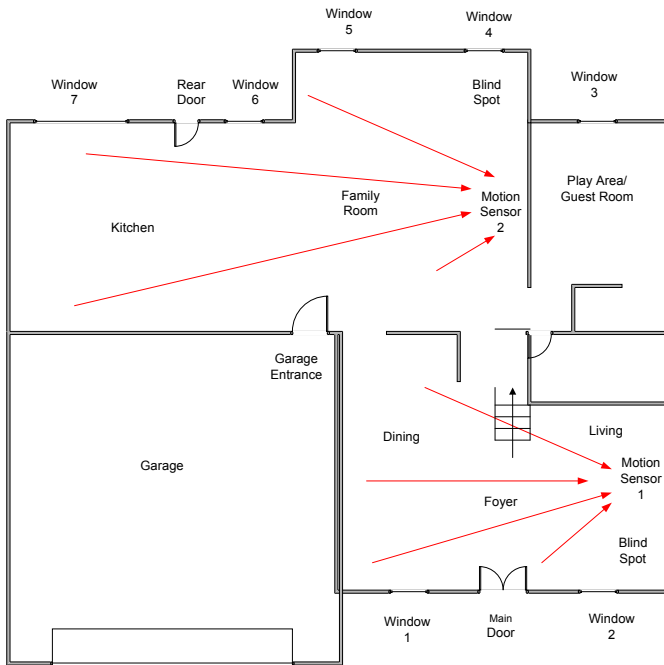
This device contains Lithium battery. Do not disassemble it, do not short circuit it. For disposing this equipment, bring it to your nearest recycling centre.

Handling Precautions:

- Do not expose it to temperature below 0F or greater than 110F
- Be careful that children do not swallow any parts such as mounting screws, etc
- Never place it in microwave or any hot object as it will cause battery to explode
- Do not use harsh chemicals to clean it
- Do not drop, strike or shake it
- Do not disassemble it
- Only let authorized personnel service it

Selecting a perfect location:

For the most effective security, we suggest focusing on intruder path instead of windows and doors. For example, in the following layout, intrusion thru any of the 7 windows or 3 doors can be covered by just 2 motion sensors. Any intruder breaking-in thru front side, either thru Window 1 or Window 2 or Main Door, will anyway fall in the path of Motion Sensor 1 even if there is a blind spot near the corner of Window 2. Similarly, any intruder breaking in thru any opening on rear side or thru garage door will fall in the path of Motion Sensor 2. If there is a room that has nothing worth stealing, such as play area, then you can avoid putting any sensor in it



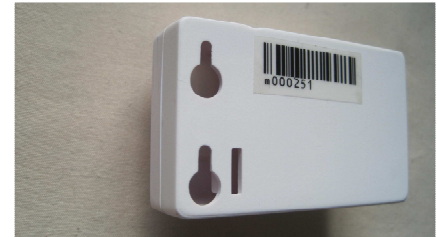
Installation

Step 1: Mounting

A motion sensor can simply be placed on top of book-shelf or can be mounted on wall. To mount it on wall:

Put 2 screws on the wall such that they align with 2 holes as shown in picture
Gently push the motion sensor & slide down

A door sensor should be mounted similarly on door-frame, and its magnet should be mounted on door near the round notch on right side



Step 2: Linking with Control Panel

Go to advance menu in cPad by using "menu" button

After entering password, keep pressing menu button till you reach "Add Wireless Sensor"

Press # for selecting this option

Trigger the sensor (by making movement in front of motion sensor or by opening/closing door for the door sensor)

Press # for Yes.

Refer cPad manual for more detail

Operating Modes

Motion Sensor:

When a motion is sensed by motion sensor, it blinks the red light and communicates motion sense information to cPad.

There are two patterns of LED blinking:

- One blink: The sensor sensed the motion and has communicated it to cPad
- Two blinks: The sensor sensed the motion but is not communicating it to cPad because same information has been communicated two times in the last 2 minutes

Door Sensor:

When a door is opened or closed, or panic button is pressed, this sensor blinks the red LED once and communicates this information to cPad