

BRAUN

Silk·épil[®] 3



91508068/XI-17



Type 5320
Modèle 5320
Modelo 5320

www.braun.com

3-410
3-270
3-170



Braun Infolines

English	6
Français	12
Español	17

Thank you for purchasing a Braun product.
We hope you are completely satisfied with your
new Braun Silk-épil.

If you have any questions, please visit
www.service.braun.com or call:

US residents 1-800-BRAUN-11

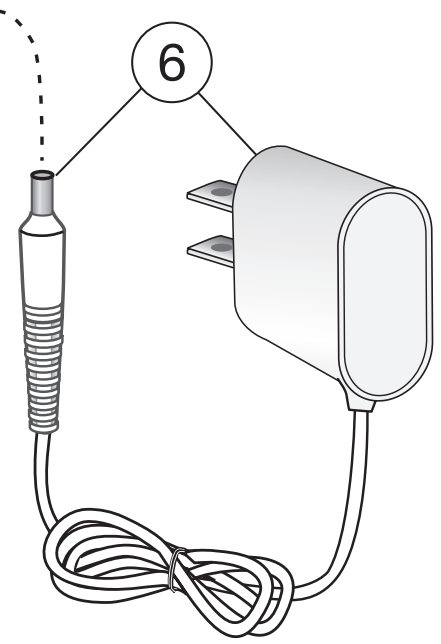
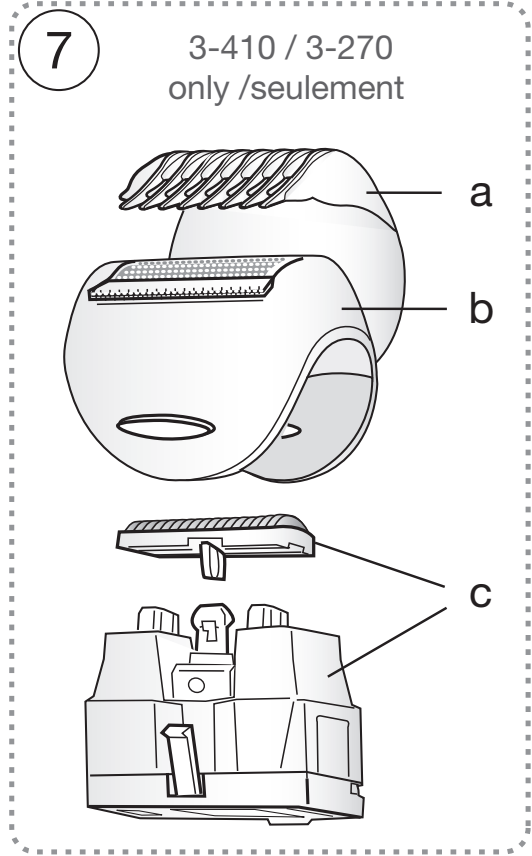
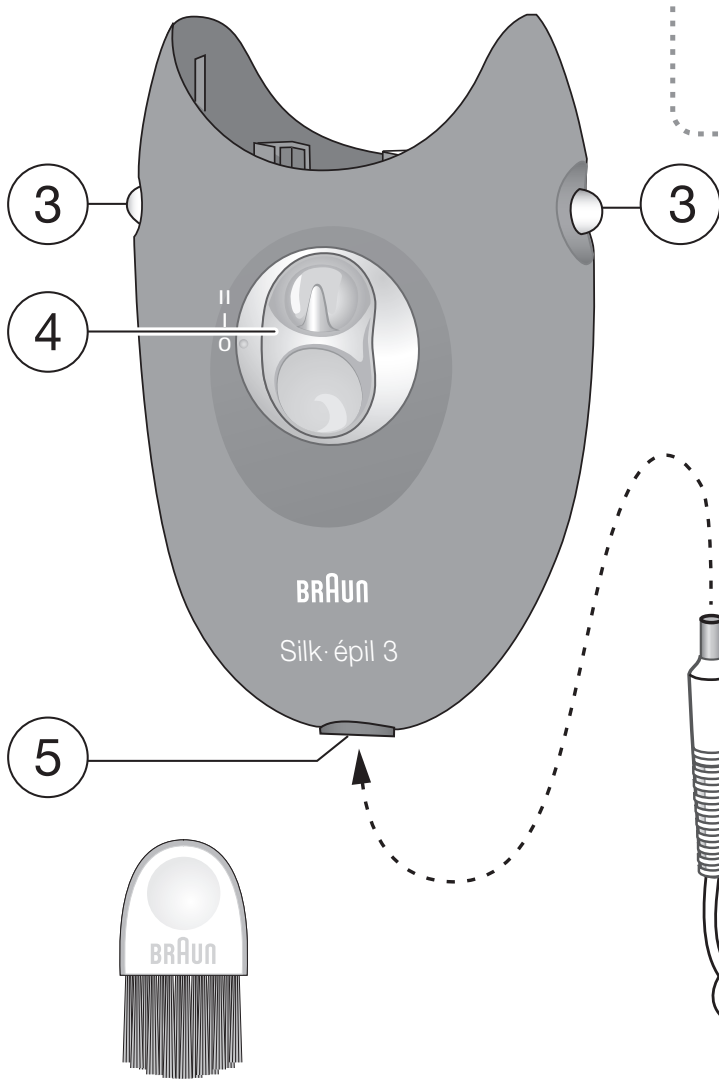
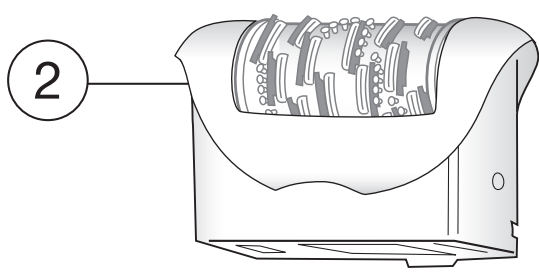
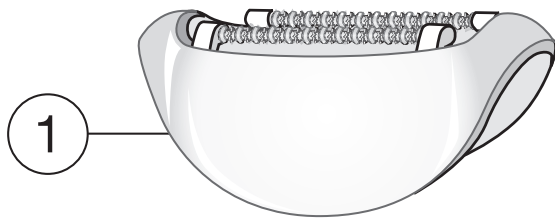
1-800-272-8611

Canadian residents 1-800-387-6657

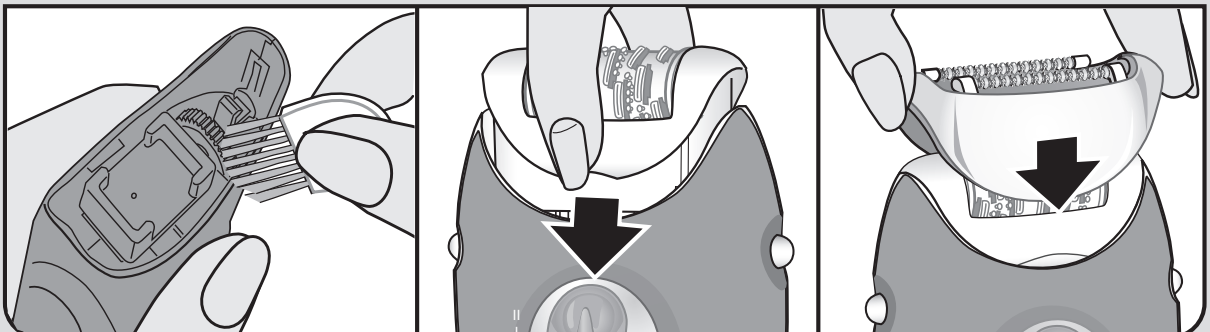
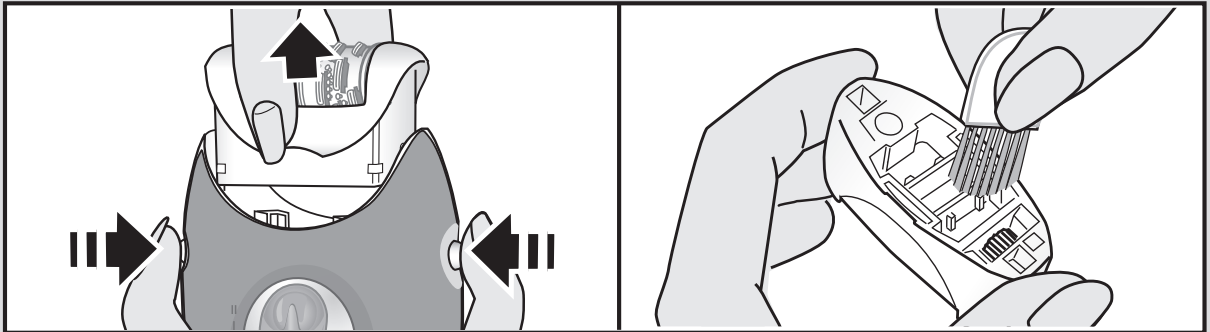
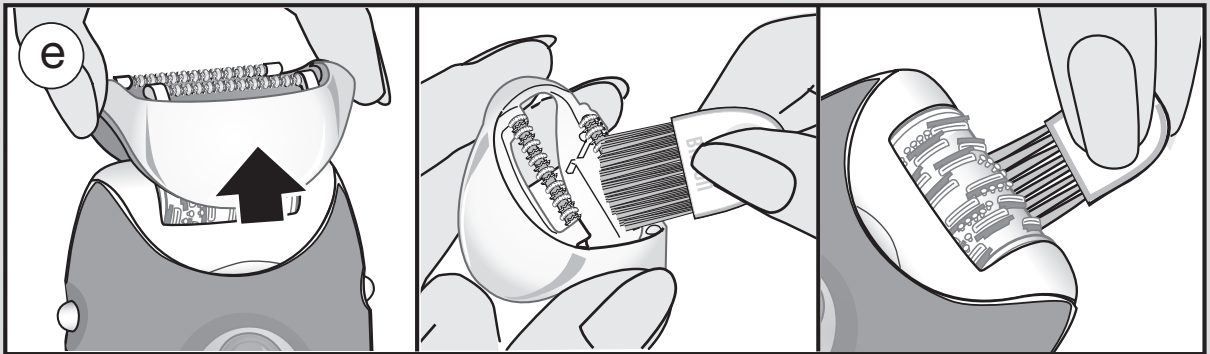
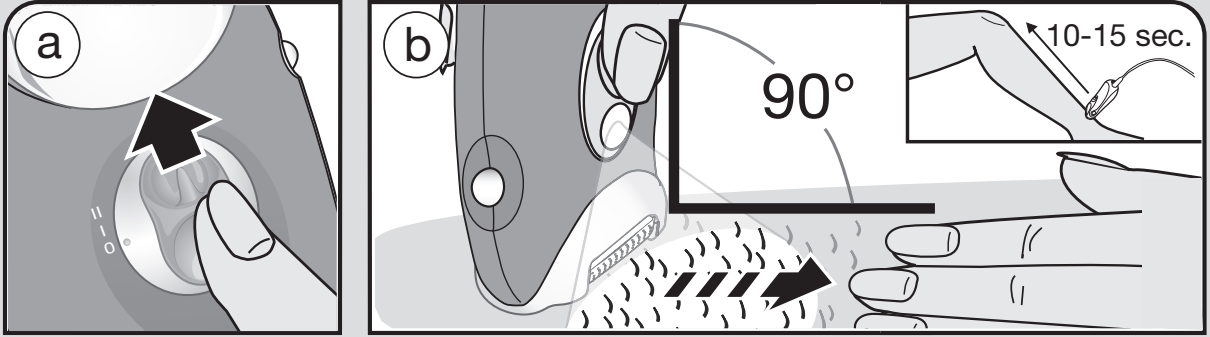
Merci d'avoir fait l'achat d'un produit Braun.
Nous espérons que vous serez pleinement
satisfait de votre nouveau Silk-épil de Braun.
Si vous avez des questions, veuillez visiter
www.service.braun.com ou appeler
Braun Canada : 1-800-387-6657

Gracias por haber comprado un producto Braun.
Esperamos que quede completamente
satisfecha con su nueva Silk-épil.

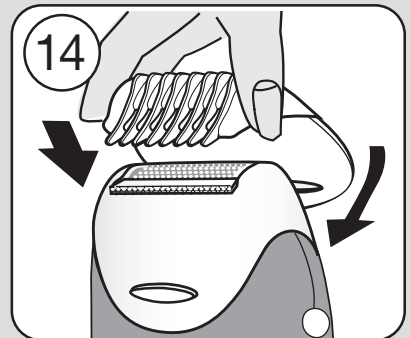
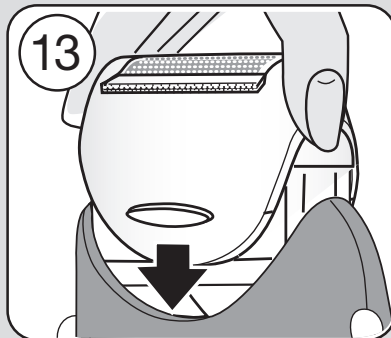
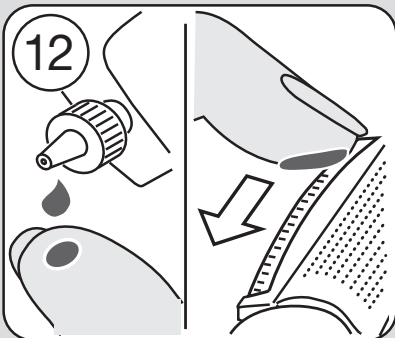
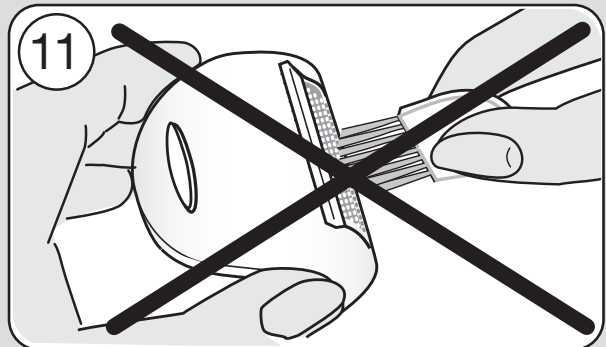
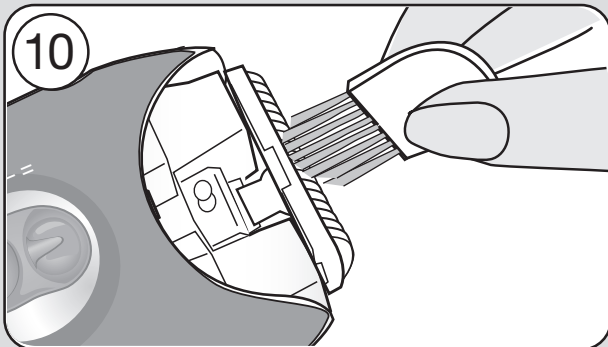
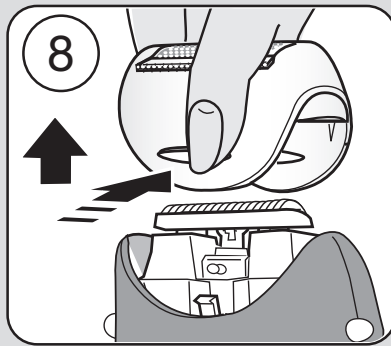
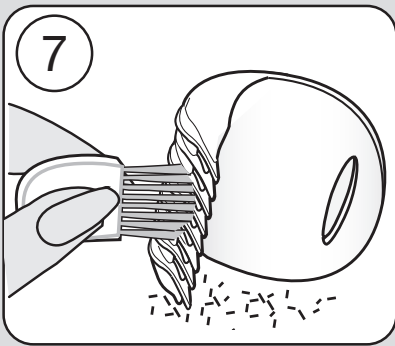
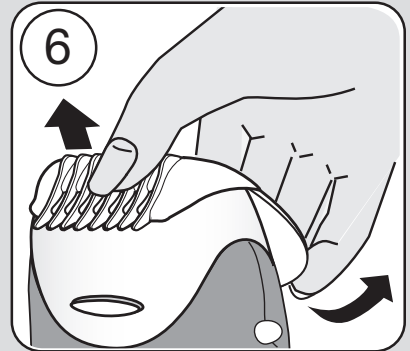
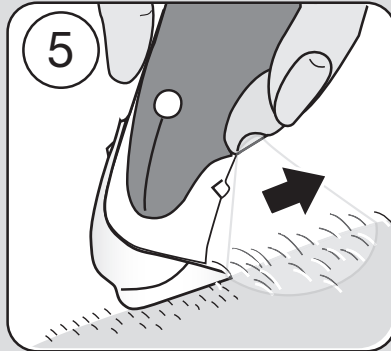
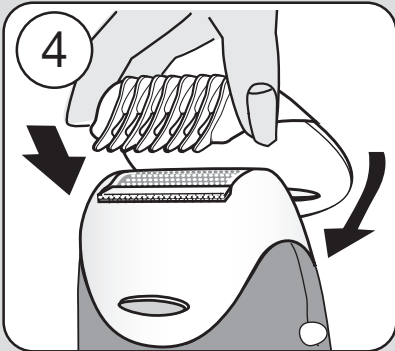
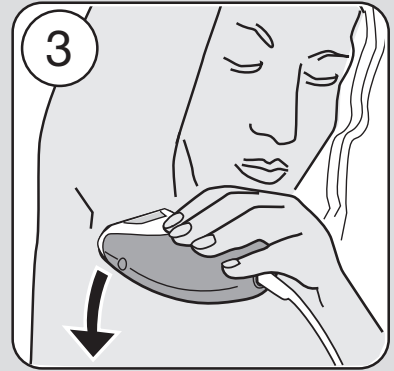
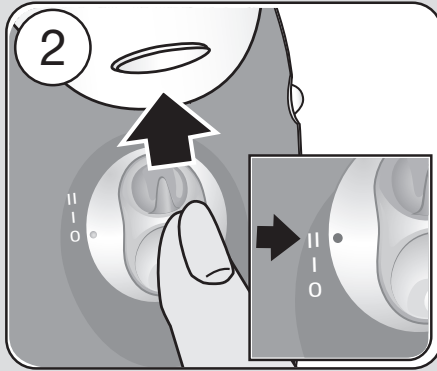
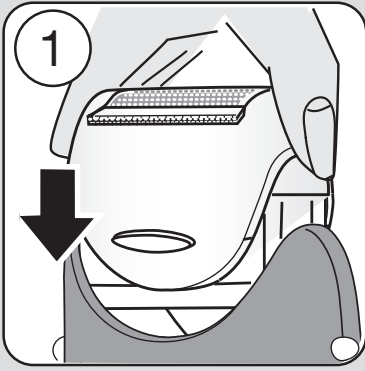




A



B



IMPORTANT SAFETY INSTRUCTIONS

When using an electrical appliance, basic precautions should always be followed, including the following:

Read all instructions before using your Silk-épil hair remover.

DANGER


To reduce the risk of electric shock:

1. Do not reach for an appliance that has fallen into water. Unplug immediately.
2. Do not use while bathing or in a shower.
3. Do not place or store appliance where it can fall or be pulled into a tub or sink. Do not place in or drop into water or other liquid.
4. Always unplug this appliance from the electrical outlet immediately after using.
5. Unplug this appliance before cleaning.
6. This appliance is provided with a special cord set with integrated Safety Extra Low Voltage power supply. Do not exchange or manipulate any part of it.

FOR HOUSEHOLD USE ONLY

WARNING

To reduce the risk of burns, fire, electric shock, or injury to persons:

1. Close supervision is needed when this appliance is used by, on, or near children or persons with disabilities.
2. Use this appliance only for its intended use as described in the manual. Do not use attachments not recommended by the manufacturer.
3. Never operate this appliance if it has a damaged cord or plug, if it is not working properly, if it has been dropped or damaged, or dropped into water. Return the appliance to a service center for examination and repair.
4. Keep the cord away from heated surfaces.
5. Never drop or insert any object into any opening.
6. Do not use outdoors or operate where aerosol (spray) products are being used or where oxygen is being administered.
7. Always attach plug to appliance first, then to outlet. To disconnect, turn switch to «off», then remove plug from outlet.
8. Only use the power supply provided. If the appliance is marked  C 492-XXXX, only use Braun power supplies coded 492-XXXX.
9. Do not use this appliance with a damaged or broken foil, as serious skin injuries may occur.

SAVE THESE INSTRUCTIONS

Please read the use instructions carefully and completely before using the appliance and keep them for future reference.

Important

- For hygienic reasons, do not share this appliance with other persons.
- Keep the appliance dry.
- When switched on, the appliance must never come in contact with the hair on your head, eyelashes, ribbons, etc. to prevent any danger of injury as well as to prevent blockage or damage to the appliance.

General information on epilation

All methods of hair removal at the root can lead to ingrown hair and irritation (e.g. itching, discomfort or reddening of the skin), depending on the condition of the skin and hair type. This is a normal reaction and should quickly disappear, but may be stronger when you are removing hair at the root for the first few times or if you have sensitive skin. If, after 36 hours, the skin still shows irritation, we recommend that you contact your physician. In general, the skin reaction and the sensation of pain tend to diminish considerably with the repeated use of Silk·épil.

In some cases inflammation of the skin could occur when bacteria penetrate the skin (e.g. when sliding the appliance over the skin). Thorough cleaning of the epilation head before each use will minimise the risk of infection.

If you have any doubts about using this appliance, please consult your physician. In the following cases, this appliance

should only be used after prior consultation with a physician:

- eczema, wounds, inflamed skin reactions such as folliculitis (purulent hair follicles) and varicose veins
- around moles
- reduced immunity of the skin, e.g. diabetes mellitus, during pregnancy, Raynaud's disease
- haemophilia or immune deficiency.

Epilation is easier and more comfortable when the hair has the optimal length of 2–5 mm (0.08–0.2 in). If hairs are longer, we recommend that you precut the hair to this length before epilating.

Fine hair which regrows might not grow up to the skin surface. The regular use of massage sponges (e.g. after showering) or exfoliation peelings help to prevent in-growing hair as the gentle scrubbing action removes the upper skin layer and fine hair can get through to the skin surface.

Description (see page 4)

- 1 Massaging rollers attachment
- 2 Epilation head with tweezer element
- 3 Release buttons
- 4 On/off switch with incorporated light
- 5 Socket
- 6 Special cord set
- 7 Shaver head
(only with models 3-410, 3-270)
- 7a Trimmer cap
- 7b Shaver foil frame
- 7c Cutter block

Epilation (see picture section A)

- Your skin must be dry and free from grease or cream.
- Before use, make sure that the epilation head (2) is clean and

provided with the massaging rollers attachment.

To turn on the appliance, slide up the on/off switch (4):

Setting I: extra gentle

Setting II: extra efficient

When switched on, the switch light illuminates the area to be epilated.

Rub your skin to lift short hairs. For optimal performance, hold the appliance at a right angle (90°) against your skin and guide it without pressure against the hair growth, in the direction of the switch. The massaging rollers (1) stimulate the skin before and after the hair is pulled out for an extra gentle epilation experience.

Leg epilation

Epilate your legs from the lower leg in an upward direction. When epilating behind the knee, keep the leg stretched out straight.

Underarm and bikini line epilation

Please be aware that especially at the beginning these areas are particularly sensitive to pain. Therefore, we recommend that you start with switch setting I. With repeated usage the pain sensation will diminish.

Before epilating, thoroughly clean the area to remove residue (like deodorant). Carefully dab the area dry with a towel. When epilating the underarm, keep your arm raised up and guide the appliance in different directions.

Cleaning

After epilating, unplug the appliance, remove the massaging rollers and clean the epilation head (2). Thoroughly clean the tweezer element with the cleaning brush dipped into alcohol. While cleaning, you can turn the tweezer element manually.

To remove the epilation head, press the release buttons (3) on the left and right and pull it off. After cleaning, place the epilation head and the massaging rollers back on the housing.

Shaving (see picture section B)

The shaver head (7) is designed for a fast and close shave of legs, underarms and bikini line, contour trimming and cutting hair to 5 mm length. Use the shaver head with speed II.

For cutting hair to 5 mm length, put on the trimmer cap (a).

Cleaning

Tap the shaver foil frame (b) on a flat surface. Do not clean it with the brush as this may damage the foil.

The shaving parts need to be lubricated regularly every 3 months.

Replace the foil frame (b) and cutter block (c) when you notice a reduced shaving performance. Replacements parts can be obtained from your retailer or Braun Customer Service Centers or via www.service.braun.com. Do not shave with a damaged foil.

Subject to change without notice.

FOR USA ONLY

1 year limited warranty

Braun warrants this product to be free of defects in material and workmanship for a period of one year from the date of original purchase.

If the appliance exhibits such a defect, Braun will, at its option, either repair or replace it for the consumer without charge.

Please call 1-800-Braun 11 (800-272-8611) to be referred to the authorized Braun Service Center closest to you.

This warranty does not cover damage resulting from accident, misuse, abuse, dirt, water, tampering, unreasonable use, servicing performed or attempted by unauthorized service agencies or failure to provide reasonable and necessary maintenance.

ALL IMPLIED WARRANTIES INCLUDING ANY IMPLIED WARRANTY OF MERCHANTABILITY OR FITNESS FOR ANY PARTICULAR PURPOSE ARE LIMITED IN DURATION TO 1 YEAR FROM DATE OF ORIGINAL PURCHASE. IN NO EVENT WILL BRAUN INC. BE RESPONSIBLE FOR CONSEQUENTIAL DAMAGES RESULTING FROM THE USE OF THIS PRODUCT. Some states do not allow the exclusion or limitation of incidental or consequential damages, so the above limitation or exclusion may not apply to you.

This warranty gives you specific legal rights, and you may also have other legal rights which vary from state to state.

FOR CANADA ONLY

Guarantee

In the event a Braun Silk-épil fails to function within 1 year from date of purchase, because of defects in material or workmanship, and the consumer returns the unit to an authorized service center, Braun Canada, will, at its option, either repair or replace the unit without additional charge to the consumer.

This guarantee does not cover any product, which has been damaged by dropping, tampering, wrong current, servicing performed or attempted by unauthorized service agencies, misuse or abuse.

Exclusion of Warranties: The foregoing warranty is the sole warranty offered by Braun Canada hereby disclaims any implied warranty or merchantability or fitness for any particular purpose. In no event will Braun Canada be responsible for consequential damages resulting from the use of this product.