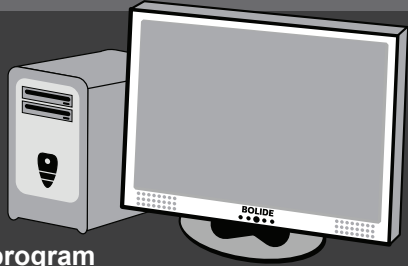


QUICK IP CAMERA SETUP GUIDE

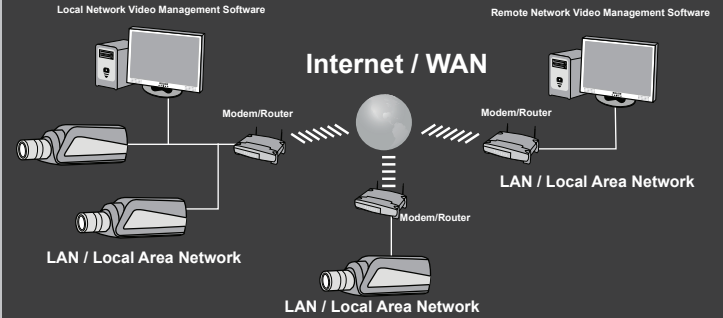
START HERE

IMPORTANT:

Check power and voltage to prevent damage. Please use only 12VDC 1000mA or POE to power the camera. In order to program the IP camera, you need a computer connected to the same network as the camera.

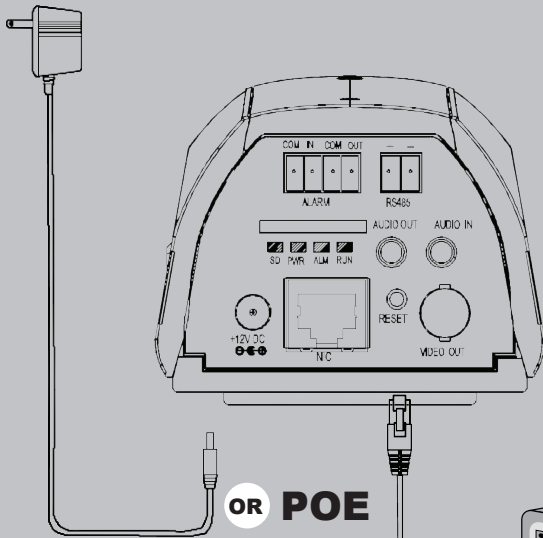


Connection Diagram



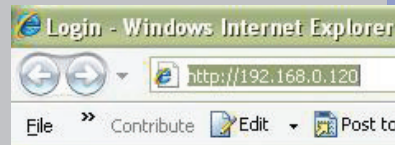
EASY SETUP STEP 1 - 2 - 3

- 1** Plug in the power to the camera 12VDC or POE. Plug in the Ethernet cable to the camera.

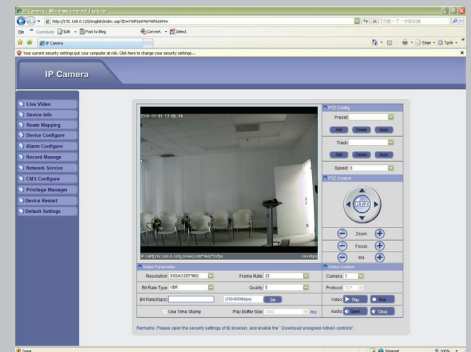
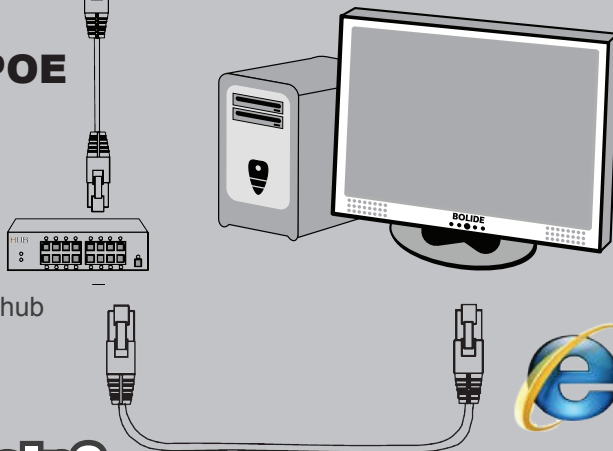


OR **POE**

- 3** Open Internet Explorer, type in the default IP address in the address bar:
<http://192.168.0.120>
 Login: admin
 Password: admin
 For additional IP cameras, simply assign different IP once you have logged on.



- 2** Plug in the cable to a network hub and connect to your computer.



*If you encounter IE Active X error, please go to internet options > enable all Active X control under security settings. Please also make sure your computer is set to the same network mask.

Need More Help?

For information about features, please refer to the user manual for example settings and definitions. Additional product information can also be found in the Product Manual on the CD. Please feel free to give us a call or simply log on to <http://www.bolideco.com> for more information and support.



BOLIDE
TECHNOLOGY GROUP



Bolide Technology Group is a ISO 9001:2008 Certified Corporation