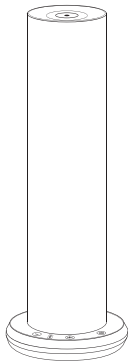


aromatech

SCENT BETTER.



AroMini BT

Bluetooth Essential and Aroma Oil Diffuser

Contents

Discover the Power of Scenting!.....	3
Features.....	3
Technology.....	4
Specifications.....	4
Diagram of Parts.....	5
Where to Place the Diffuser.....	5
Cleaning the Diffuser.....	7
How to Clean your Diffuser.....	7
Bluetooth Instructions.....	8
FAQ.....	12
Intensity Grade and Consumption.....	14
Handling AroMini BT.....	14
Troubleshooting.....	15

Discover the Power of Scenting!

Scent is a fantastic way to express yourself, reduce stress, enhance happiness, give your memory a boost, increase your energy, sleep better and uncover a host of other benefits. The AroMini BT will change the way you think about scents and reveal a multitude of ways to use them effectively at home or business. Simply add your favorite AromaTech scents and transform your space into whatever you need it to be. The AroMini BT allows you to easily tailor your scent experience to your preferences and your space. With unique cold-air diffusion technology, this diffuser scents your environment subtly and consistently while preserving the quality of your 100% Essential or aroma oils. Its sleek design and modern aesthetic look and will help you make any space more inviting and vibrant.

Features

- Controlled through Bluetooth with iOS or Android App
- Heat-free cold-air diffusion technology that subtly disperses essential oil into the air
- Adjustable intensity and hours of operation through our Scenting App
- Quiet and energy efficient
- Eco-friendly – made from recycled aluminum
- No water or heat

Technology

The scent is diffused through nebulization, a process that breaks down fragrance oil into a very fine dry mist. This preserves the intention behind your essential oil blends and their olfactive and therapeutic powers without diluting the oil in water, heating it or adding solvent to it.

This nebulizing technology, combined with an essential or aroma oil blend, produces nano-particles that suspend in the air for several hours while providing the benefit of therapeutic use of essential oils or simply enhancing your ambiance.

Diffusing helps to reduce dust, pet dander allergens, and other airborne allergens from non-living matter (e.g. dust mite matter allergens) while AromaTech's 100% all natural diffuser blends bring nature's goodness into your space by supporting harmony and balance.

Using only AromaTech essential and aroma oil blends will guarantee the best performance of your diffuser. **No mixing or diluting with water, carrier oils or alcohol is required.** The diffusion process can be controlled through an iOS or Android app. Simply fill the bottle with what nature created and enjoy!

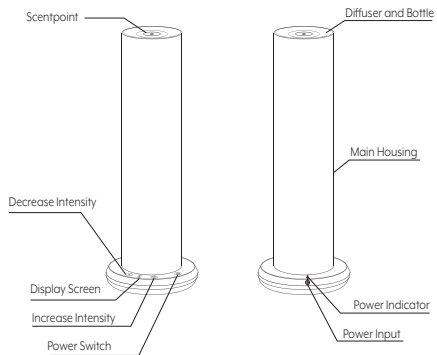
Specifications

Product Name	AroMini BT
Dimensions	112x112x288mm / 4" x 4" x 11"
Output Voltage	DC12V
Input Voltage	110-240V
Power	5W
Bottle Capacity	4oz. / 120ml.
Coverage	92 sq.m. / 1,000 sq.ft.
Weight	1 kg / 3 lbs

What's in the box?



Diagram of Parts



Where to Place

Applications: aromatherapy, ambient scenting and odor control in home or business.

Location: AroMini BT is designed to be used as a table-top or a shelf-top unit.

Scenting Coverage: AroMini BT can be adjusted to scent an area ranging from 10 to 1,000 sq.ft. (1 to 92 sq.m)

Scent Intensity: Adjust your scenting experience and hours of operation through Bluetooth with the Scenting App.

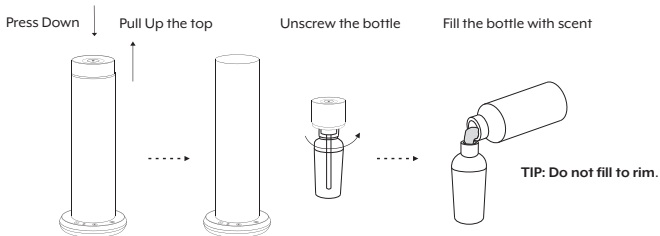
Device Location: The most important element of your scenting experience is to properly position the device in the room, to ensure optimal performance and control.

Below are our suggestions:

- Choose the location where the aroma oil molecules can use the natural airflow in a room. This is particularly important with air-conditioned spaces. The best location for the AroMini BT is where there is a lot of airflow.
- If you are not sure of the direction of the airflow, simply turn on the AroMini BT and using a flashlight point it at the scent output and watch where the scent will travel. Alternatively, light up a match and blow it out immediately. The direction of the smoke will tell you which way the fragrance will travel.
- The AroMini BT is a luxury and aesthetically beautiful device. Always keep it in an open area and do not hide it behind or under pieces of furniture.
- Try a variety of locations and settings until you are happy with scent coverage. Give AroMini BT a little time to adjust to the new location and setting before changing it again.

Installing the Fragrance Bottle

1. Press down on the top of the diffuser and pull up the diffuser with bottle.
2. Unscrew the bottle and fill with your favorite AromaTech Essential Oil.
3. Screw the bottle back into the diffuser and press down to lock.



Cleaning the Diffuser

1. To ensure your diffuser runs seamlessly, make sure to clean it every time you refill the bottle or use a new essential oil.
2. If you can no longer smell the scent. Check to make sure bottle is not empty.
3. If the bottle is full but still not diffusing the fragrance, then the diffuser may be clogged and needs to be cleaned out with rubbing alcohol.

How to Clean your Diffuser

1. Turn the device off.
2. Unscrew the bottle and replace the essential oil with rubbing alcohol.
3. Screw the bottle into the AroMini BT and let it run for 20-25 minutes.
4. When done replace rubbing alcohol with essential oil and enjoy your scent.

Connecting to Bluetooth

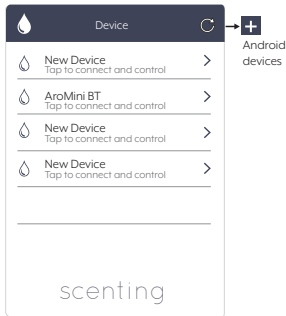
Please download and install our Scenting App from the App Store or Google Play to continue.

STEP 1 Plug in your AroMini BT into an electrical outlet

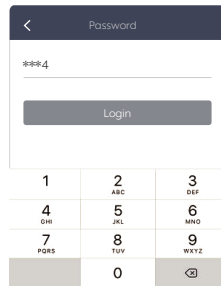
STEP 2 Open the Scenting App



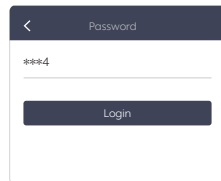
STEP 3 Find the AroMini BT on the list of available Bluetooth devices.



STEP 4 The default password is 1234



STEP 5 After you enter the password, press **Login**



Connecting to Bluetooth (continued)

STEP
6

Adjust schedule as desired

Settings About

Name: AroMini BT → Device Name

Location: Living Room → Notes

Diffusing Schedule + → Add working period

7:30 - 20:30 Intensity: 5 → ON/OFF

00:30 - 08:30 Intensity: 8

Using this page you may change the schedule, add multiple start and stop times and change days of operation.

You can set up to 5 ON/OFF events. Please tap **Save** to lock the settings before exiting.

STEP
7

Adjust schedule as desired

Diffusing Schedule Save

ON time	OFF time
05 28	05 28
06 29	06 29
07 30	07 30
08 31	08 31

Set Days

Sun Mon Tue Wed Thur Fri Sat → Activated day of the week

Intensity to adjust - 5 + → Select grade (from 1 through 10)

Custom

Start working time	Stop working time
1	5
2	6
3	7
4	8

Slide here to adjust working and pause seconds

CAUTIONS

- Only use the power adapter supplied with the device.
- Never operate the diffuser if the power adapter is damaged.
- Do not use the diffuser if any part of the device is broken.
- To reduce the risk of electric shock, do not attempt to service the device in any way other than as described in the “Care & Maintenance” section of this manual.
- Do not disassemble or attempt to repair the diffuser; in the event of a problem, please contact us at (home) 1.888.276.6245 / (business) 1.888.276.6245 or email help@aromatechscents.com
- When moving the device, always keep it upright and secure with both hands.
- Always place the unit on a stable, level surface, i.e. shelf or a table.
- Do not plug the unit into the wall socket with wet hands.
- Do not pour water or other liquids into the bottle with aroma oil.
- Do not tilt, move or attempt to empty or refill unit while in operation.
- To prevent clogging of the diffuser, run rubbing alcohol once a month for 15 min.
- Always turn off and unplug the device during maintenance or when not in use.
- Ensure that the power adapter is not covered or blocked when plugged in; it must be able to dissipate the heat properly.
- Do not cover the diffuser with objects or material while in use.
- Keep the device at least 24” from the ceiling.
- Use only AromaTech diffuser blends; other oils may contain fragrances, base oils or synthetics that could result in malfunction. Some single note essential oils are also too thick or heavy for use in the ultrasonic diffuser. See FAQs for more information.
- In case of smoke, unusual scent, loud noise, or other malfunction, unplug the unit immediately and discontinue use. Further use may result in fire or electrical shock.
- Do not immerse the unit in water.
- Always keep unit out of reach of small children and pets.
- Store at 0°C - 50°C (32°F - 122°F) and 5% - 95% humidity.

CAUTION: Always be cautious of where you are placing the AroMini BT. Make sure it cannot be tipped over as that may cause some aroma oil to leak out. Keep out of reach of children. Avoid getting aroma oil liquid in contact with wood or other delicate surfaces.

NOTE: Do not place the AroMini BT near an HVAC return grill, exhaust fan or vent, open door or a window as that will cause the scent to escape the space. Remember you want to work with the natural airflow not against it.

IMPORTANT: Keep nose clear from fragrance output when the device is operating. Instead, wave air towards nose to experience fragrance.

TIP: As a rough estimate, start with a setting level at Min. When you change a scent level give the AroMini BT some time to equalize the scent level through out the space before you decide if you need to adjust.

FAQs

Q: What size room can the AroMini BT scent?

AroMini BT is fully adjustable for different size rooms. It is most effective in spaces from 10 to 1,000 sq.ft. (10 to 92 sq.m.).

Q: Where can I place the AroMini BT?

You must place the AroMini BT on a flat surface where it can take full advantage of the natural airflow in the space. See the User Guide for details.

Q: Do I need to adjust the AroMini BT?

Yes! AroMini BT is a very powerful device that can handle small and large spaces. If the diffuser set too high for the room size, it may cause discomfort. Adjusting the scent intensity is easy. Simply use the controls on the device to adjust intensity up or down, or use the App. Start at Grade 1 and work your way up if needed.

Q: How strong should I make the scent?

Remember, less is more. AroMini BT allows you to get rid of bad odors and create your perfect ambience with small amounts of scent. Unlike other air fresheners, AroMini BT can be adjusted via the app or manually from Grades 1 - 9.

Q: What if my unit does not turn on?

Power adapter may not be properly plugged in; ensure that the power adapter is properly plugged into the powerjack and the electrical source.

Q: The App is asking for my password, does that mean the machine and the schedule have turned off?

No, the App requires the password be re-entered after set period of time has passed. Your machine is still running the schedule you have input into the app even if your phone is no longer paired to the diffuser.

Q: The number on the display has turned off, is my machine off?

No, the number on the display will go blank after a short period of time. The machine is still running at the last setting or schedule from the app. To “wake up” the display touch any button or reconnect to the app.

Q: What if my unit does not scent or there is almost no scent coming out?

Check first there is aroma oil in the bottle and the bottle is screwed in straight and snug. The diffuser core may be clogged and need cleaning. Please see “Care & Maintenance” instructions.

Q: What type of oils can I put in my nebulizing diffuser?

Use only AromaTech diffuser blends; other blends and oils may contain base oils that could result in malfunction.

Many single note essential oils should not be used in the diffuser. Single note essential oils may have a thick or heavy consistency that can clog the diffuser and cause it to stop diffusing scent.

AromaTech diffuser blends have been carefully blended to be effective for you, and safe and easy to use in your cold-air diffuser.

Q: Is AroMini BT safe to use with children and pets?

Yes. When used as directed and only with AromaTech essential and aroma oil blends, AroMini BT is the safest cold-air diffuser available. Make sure to request SDS if you require more info about the oil being diffused.

Q: How does AroMini BT differ from aerosol and ultrasonic diffuser?

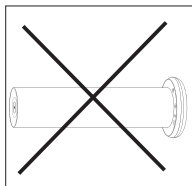
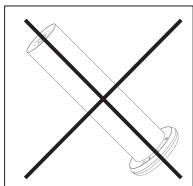
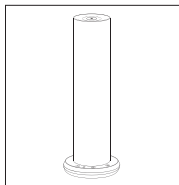
Aerosol sprays diffuser very large particles that drop to the ground the moment they are sprayed, providing very high concentrations just in the area they were sprayed. The scent effect is very short and can't be controlled. Ultrasonic diffusers use water and vibration to diffuser very tiny amounts of essential and aroma oils. With AroMini BT, there is no diluting in water or other carrier oils are required. The scent particles diffused suspend for several hours providing the most subtle and comfortable scented environment. AroMini BT creates, maintains and evenly delivers a perfectly balanced scented environment continuously and in low dosage without alcohol, water, propellants or other harmful VOCs.

Intensity Grade and Consumption

Grade	ON (seconds)	OFF (seconds)	Consumption(ml/h)
G1	30s	270s	0.07
G2	60s	240s	0.13
G3	90s	210s	0.20
G4	120s	180s	0.27
G5	150s	150s	0.33
G6	180s	120s	0.40
G7	210s	90s	0.47
G8	240s	60s	0.53
G9	270s	30s	0.60

The above consumption data may vary depending on the oil you choose to diffuse.

Handling the AroMini BT



Please ensure the AroMini BT is always kept in the upright position.
If tilted oil may spill inside the device or on the surface its on.

Problem	Possible Reason	Solution
Device is not working.	<ol style="list-style-type: none"> 1. Device is not connected to the power outlet. 2. Hours of operation aren't set correctly on the App. 	<ol style="list-style-type: none"> 1. Check if the device is connected to power. 2. Set hours of operation within the App.
The device is not diffusing, can't hear the air pump.	<ol style="list-style-type: none"> 1. Device is in pause/rest mode between cycles. 2. Pump failed 	<ol style="list-style-type: none"> 1. Wait for the device to turn back on by itself after its cycle. 2. Replace pump. Contact AromaTech support.
Device is working but no mist is visible and/or can't smell the scent.	<ol style="list-style-type: none"> 1. Diffuser core is clogged. 2. Device is in pause/rest mode. 	<ol style="list-style-type: none"> 1. Replace oil with rubbing alcohol and run through the diffuser for 20 min. If that doesn't work contact us to replace diffuser core. 2. Wait for device to turn back on by itself.
Unusual and loud noise.	Pump is damaged.	Contact support to replace the pump.
Oil is leaking.	<ol style="list-style-type: none"> 1. Make sure the device is always upright. 2. Seal is broken, missing or damaged. 3. Bottle is not screwed in straight and firm. 	<ol style="list-style-type: none"> 1. If the device tipped, stand it upright. 2. Change the rubber seal. 3. Make sure the bottle is screwed in straight and snug.
Password reset on the App.	Forgot or lost password.	Use factory default password 1234.



Designed by AromaTech Inc.
Vancouver, BC, Canada

Consumer

<http://aromatechscent.com>

Toll Free: +1.888.276.6245

Business

<http://aromatechsystems.com>

Toll Free: +1.877.347.5239

Support

<http://support.aromatechsystems.com>

help@aromatechsystems.com