

aune®

X1s 32Bit/384K DSD 解码耳放一体机
32Bit/384K DSD MINI USB DAC

使用手册 / Manual

Foreword

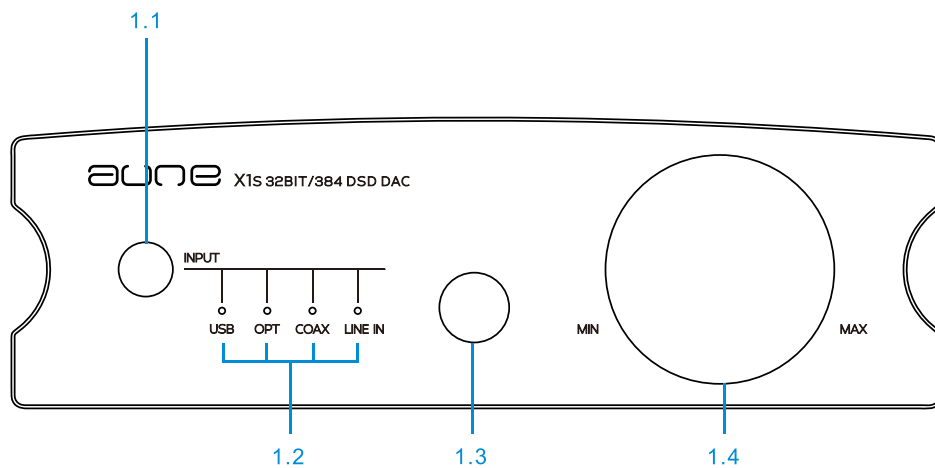
Dear Customers,

Thanks for purchasing the aune X series X1s DAC , it is the fifth generation products of aune X1.

We sincerely hope that this new DAC will bring you outstanding listening pleasure. To fully appreciate the capabilities of the X1s Mini USB DAC, please read the following manual carefully and completely before using the product.

This manual has been printed on 100% chlorine free bleached paper. The complex manufacturing process eases the burden on the water system and thus helps to protect our environment.

View of front panel and name of each part



1.1 Output signal switch / Filter mode switch

1.3 Headphone output

1.2 Input status indicators, Switch cycled by the button

1.4 Volume control knob

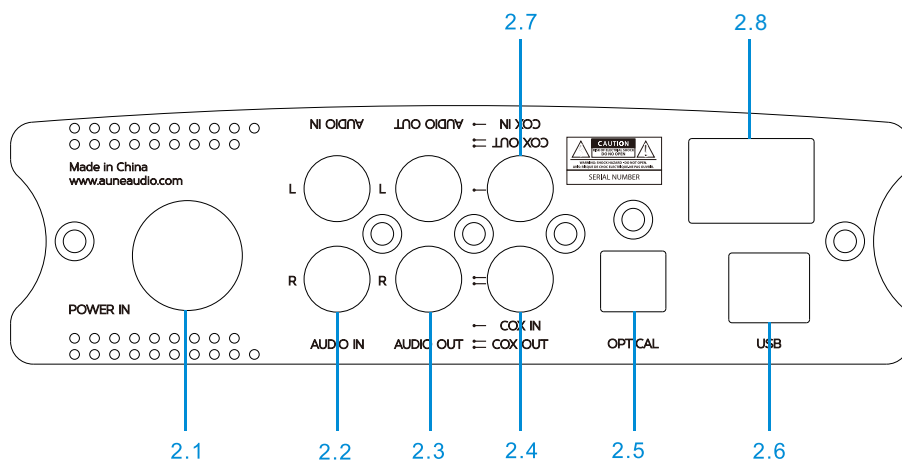
USB

OPTICAL

COAXIAL

LINE IN : headphone outside Input status indicator ,the outside Input Status is available when the led is on

View of rear panel and name of each part



2.1 POWER IN

2.2 AUDIO IN

2.3 AUDIO OUT

2.4 COAXIAL OUT (Effective with USB)

2.5 OPTICAL IN

2.6 USB Input socket

2.7 COAXIAL IN

2.8 POWER ON/OFF

Introduction

The X1s is not only a MINI DAC, it also can

Be used as :

High quality 32Bit/384K DSD128 USB DAC

High quality 24Bit/192K DAC

High quality 24Bit/192K digital interface

High quality headphone amplifier

Specifications

USB: The highest support 32BIT/384K DSD128

Coaxial and optical: The highest support 24Bit /192K

Digital coaxial output : The highest support 24Bit/192K

Output voltage level @ 0dB: 2.1V rms

Frequency response (from 20 Hz to 20 kHz): ± 0.1 dB

Dynamic range: 126dB

THD+N @ 1KHz: -110 dB

IMD+N @ 19KHz & 20KHz: -110 dB

Stereo crosstalk: -112 dB

Headphone output : 300 ohm/80MW

Size of product: 145 x 45 x 171 (mm)

Net Weight: 2KG

Components: X1s x 1/Power adapter x 1/Manual x 1/USB cable x 1/

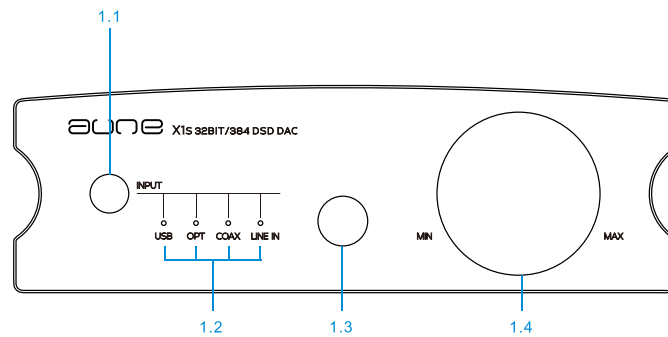
6.5mm to 3.5mm stereo F adapter x 1

* DAC needs support DOP

OPERATING INSTRUCTION

OUTPUT SWITCH/ FILTER MODE SWITCH

- 1、 Long press the buttons two seconds to Filter Mode , the indicator will on the "USB"
- 2、 Long press for four seconds to the "chosen Filter Mode" , the red Led will on in turn ,then stop, the indicator will locked



<input checked="" type="radio"/>	<input type="radio"/>	<input type="radio"/>	<input type="radio"/>	Fast Roll-off Filter Mode
<input type="radio"/>	<input checked="" type="radio"/>	<input type="radio"/>	<input type="radio"/>	Slow Roll-off Filter Mode
<input type="radio"/>	<input type="radio"/>	<input checked="" type="radio"/>	<input type="radio"/>	Winimum Phase Filter Mode

Indicator to Filter Mode

OPERATING INSTRUCTION

USB DAC

- 1、 Connect the device to your computer through "USB" socket (as photo 1)
- 2、 Press the Input signal button, let the indicator to USB position, the LED will turn when USB signal is locked
- 3、 Play music on your computer
- 4、 Connect active loudspeaker or amplifier through "AUDIO OUT" socket
- 5、 Connect headphone through Phone socket
- 6、 Adjust sound level by knob

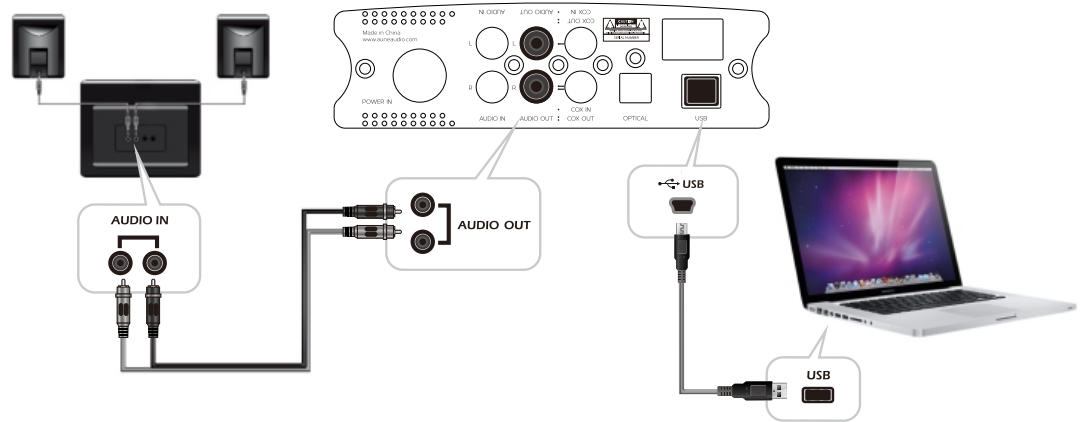


photo 1

OPERATING INSTRUCTION

USB-SPDIF DIGITAL OUTPUT

- 1、 Connect the device to your computer through "USB" socket (as photo 2)
- 2、 Press the Input signal button, let the indicator to USB position, the LED will turn when USB signal is locked
- 3、 Play music on your computer
- 4、 Connect DAC to listen music through "COAX OUT" socket

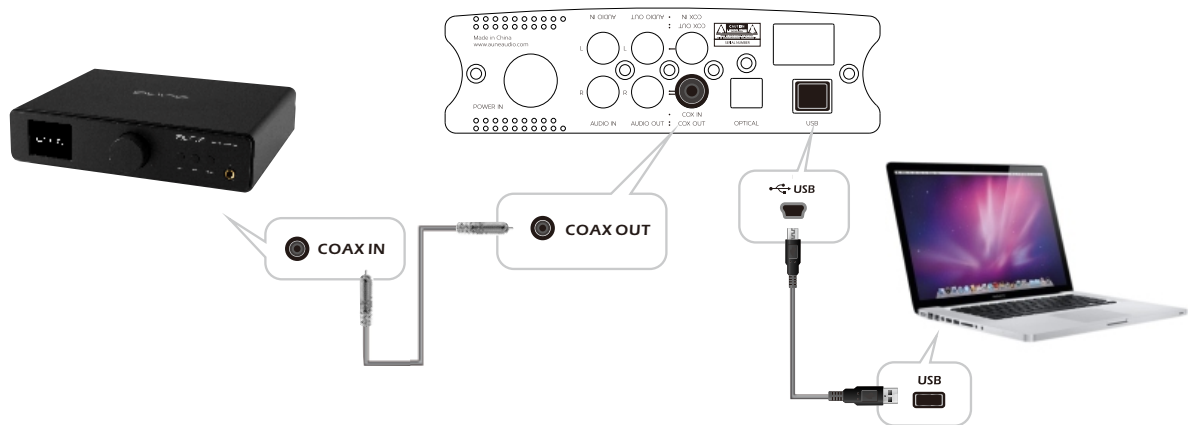


photo 2

OPERATING INSTRUCTION

DIGITAL DAC

- 1、 Connect the device to your digital out devices (CD player or computer with digital output) using coaxial cable (as photo 3)
- 2、 Press the Input signal button to make the indicator to "COAXIAL" or "OPTICAL" position, the LED will turn when digital signal is locked
- 3、 Play music on your devices
- 4、 Connect active loudspeaker or amplifier through "AUDIO OUT" socket
- 5、 Connect headphone through Phone socket
- 6、 Adjust sound level by knob

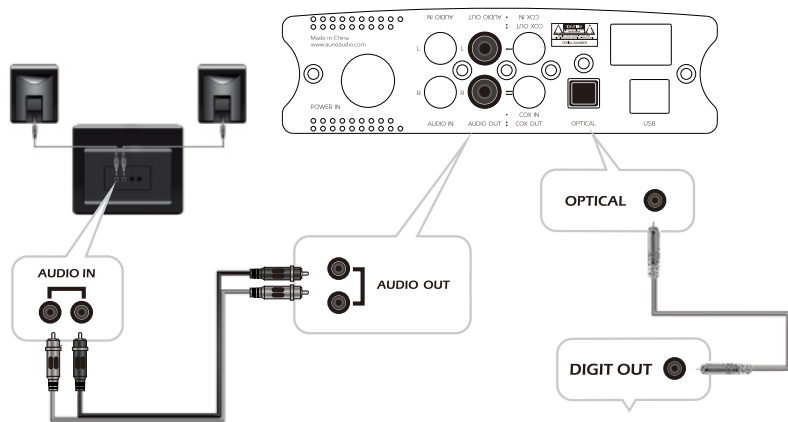


photo 3

OPERATING INSTRUCTION

PURE HEADPHONE AMPLIFIER

- 1、 Connect your sound source to the device though the "AUDIO IN" socket (as photo 4)
- 2、 Press the Output signal button make the indicator to "LINE IN" position, the indicator will be locked
- 3、 Plug your headphone to phone socket
- 4、 Adjust sound level by knob

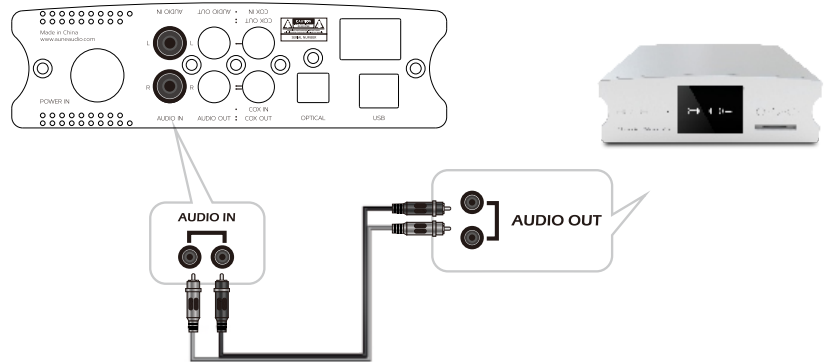
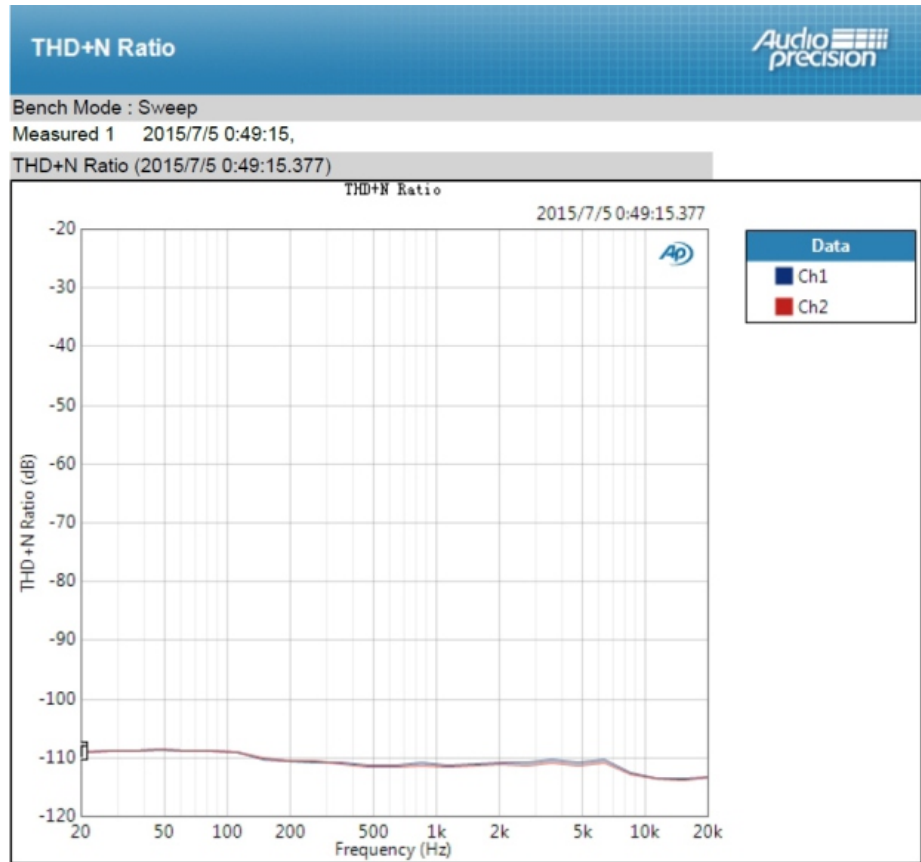


photo 4

TEST CURVE



TEST CURVE



TEST CURVE



WARNING MESSAGES

- Use exclusively recommended accessories to prevent faults, short circuits or electric shock.
- Do not expose the unit to moisture or rain.
- Do not attempt to remove parts of the body (covers); specialist repairs can be carried out only at authorized service centers

LEGAL NOTES

- Please ensure that you observe copyright laws. The recording and publication of prerecorded media such as tapes, CDs or other published or broadcast material may contravene copyright laws.
- This also applies to all of the software supplied.
- Other names, company or product names referred to in this manual are trademarks or registered trademarks of the relevant companies.



DISPOSAL ELECTRONIC EQUIPMENT

(Applies within the eU, and for other european countries with separated waste collection systems)

This device contains electronic components and therefore may not be disposed of as general household waste. Instead it should be disposed of at a recycling collection point provided by the local authority. This costs you nothing. You local authority or waste disposal authority, or the shop where you bought this device, can provide you with further information on this issue.

aune

aune | 430034 WUHAN | CHINA

Telephone: +86 027 85420526 | Fax: +86 027 85840435 | www.auneaudio.com
